

PRIVATE STREET PLANS

FOR

TARGET NORTHWEST IN NEWMARKET SQUARE

CITY OF WICHITA PRIVATE PROJECT NO. 155 PPP (607879)

INDEX OF SHEETS

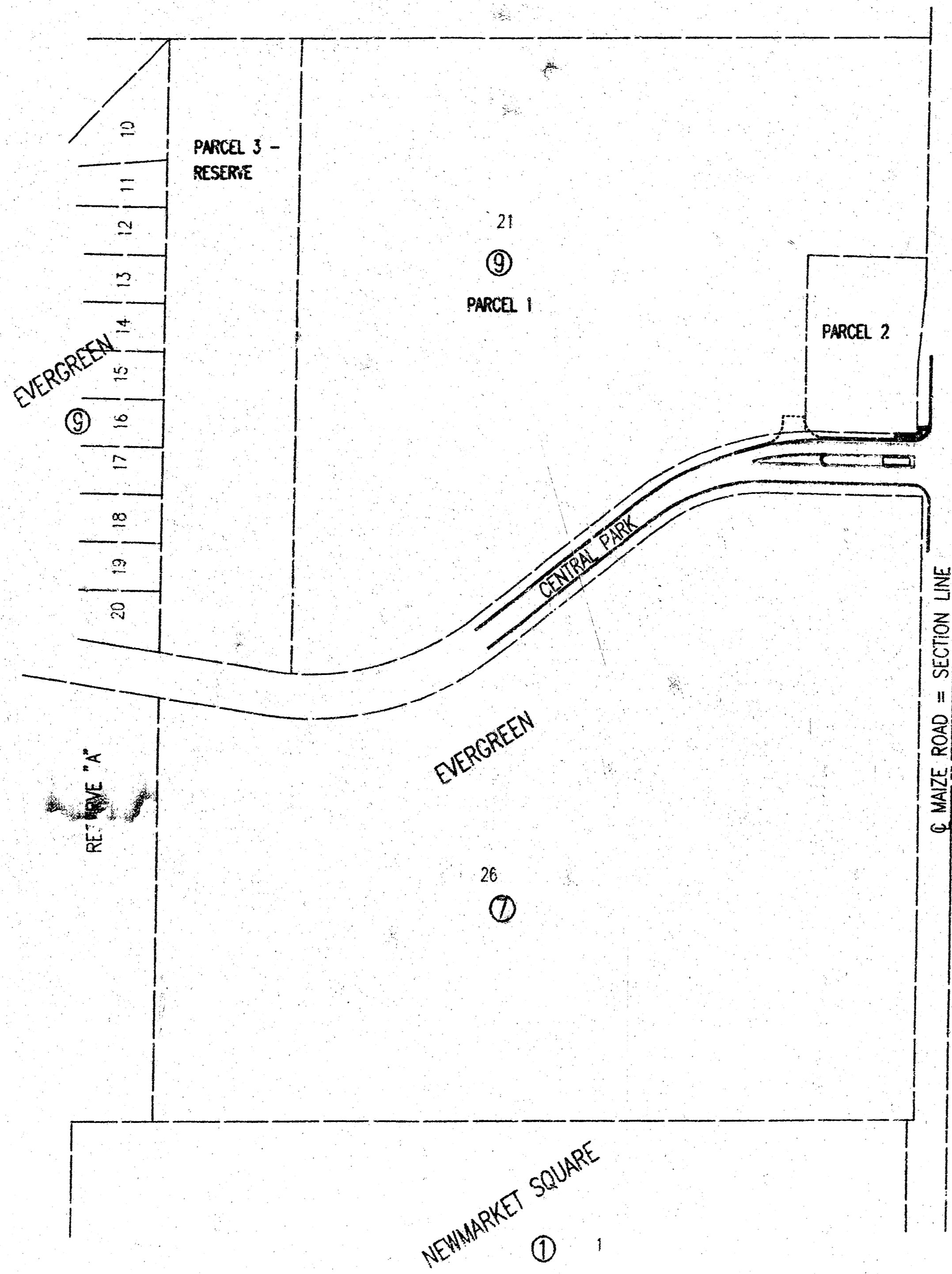
1. TITLE SHEET
2. PAVING PLAN
3. TYPICAL SECTION / DETAILS

APPROVED AS NOTED
BY CITY ENGINEER OF WICHITA

SANITARY SEWERS _____
 STORM SEWERS _____
 DRIVEWAY APPROACHES _____
 WATER MAINS _____
 PAVING: VRH 4/8/04

NOTE TO CONTRACTOR

CONTRACTOR SHALL VISIT SITE AND EVALUATE SITE CONDITIONS AT TIME OF BIDDING IN ORDER TO SATISFY HIMSELF OF CURRENT SITE CONDITIONS.



SCALE: 1" = 150'

GENERAL NOTES

UNDERGROUND UTILITY SERVICE LINES AND OVERHEAD UTILITY POLE LINES ARE TO BE ADJUSTED AS NECESSARY BY OTHERS PRIOR TO CONSTRUCTION UNLESS THE PLANS SPECIFICALLY CALL FOR THEIR ADJUSTMENT BY THE CONTRACTOR. EXISTING UTILITIES AND THEIR LOCATION, AS SHOWN ON THE PLANS, REPRESENT THE BEST INFORMATION OBTAINABLE FOR DESIGN. LOCATION INFORMATION HAS BEEN OBTAINED FROM THE VARIOUS UTILITY COMPANIES AND IS EITHER FROM COMPANY RECORD DRAWINGS OR COMPANY PROVIDED FIELD LOCATIONS. THE CONTRACTOR WILL BE REQUIRED TO WORK AROUND EXISTING UTILITIES WITHIN THE RIGHT-OF-WAY WHICH DO NOT CONFLICT WITH PROPOSED CONSTRUCTION. CONTRACTOR SHALL SATISFY HIMSELF OF SUBSURFACE CONDITIONS PRIOR TO BIDDING.

TREES AND SHRUBS IN PUBLIC RIGHT-OF-WAY WHICH ARE IN DIRECT CONFLICT WITH PROPOSED NEW CONSTRUCTION SHALL BE REMOVED BY THE CONTRACTOR WITH THE ENGINEER'S APPROVAL. TREES AND SHRUBS WHICH ARE NOT IN DIRECT CONFLICT WITH PROPOSED NEW CONSTRUCTION SHALL BE SAVED AND PROTECTED FROM DAMAGE.

RUBBLE FROM THE REMOVAL OF MISCELLANEOUS STRUCTURES SHALL BE DISPOSED OF ON SITES TO BE PROVIDED BY THE CONTRACTOR.

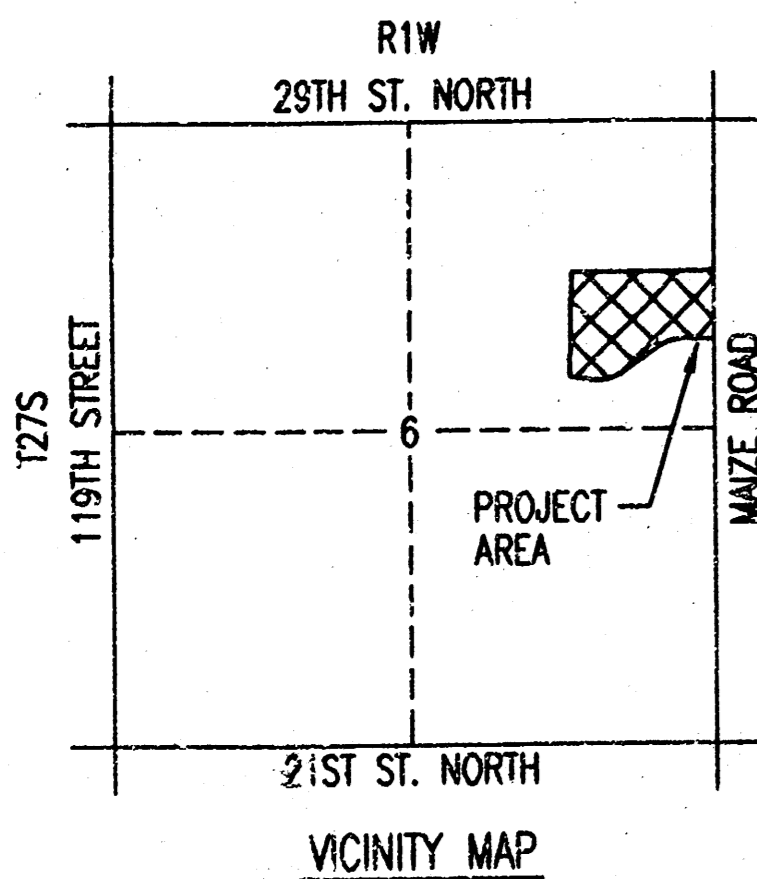
CONTRACTOR SHALL PROVIDE A MINIMUM FORTY-EIGHT (48) HOUR ADVANCE NOTICE (EXCLUDING WEEKENDS AND HOLIDAYS) PRIOR TO BEGINNING ANY EXCAVATION, TO KANSAS ONE-CALL SYSTEM, A UTILITY LOCATION SERVICE, AT (316) 687-2470 TO REQUEST THE FOLLOWING UTILITY COMPANIES TO LOCATE ALL EXISTING LINES WITHIN THE PROJECT AREA: K.G.S. GAS, WESTAR ENERGY, SBC, COX COMMUNICATIONS, AND CITY OF WICHITA SEWER MAINTENANCE AND CITY OF WICHITA WATER DEPARTMENT.

THE CONTRACTOR SHALL BE RESPONSIBLE FOR PRESERVING PROPERTY IRONS. THE CONTRACTOR WILL BE REQUIRED TO RE-ESTABLISH ANY PROPERTY IRONS WHICH ARE DAMAGED OR DESTROYED BY HIS CONSTRUCTION OPERATIONS. SUCH IRONS SHALL BE RE-ESTABLISHED BY A LICENSED LAND SURVEYOR IN ACCORDANCE WITH STATE LAWS.

THE WATER DEPARTMENT SHALL FIELD LOCATE WATER VALVES ONE TIME DURING CONSTRUCTION WHEN REQUESTED BY THE CONTRACTOR. IT SHALL BE THE CONTRACTOR'S RESPONSIBILITY TO PRESERVE SUCH FIELD LOCATIONS DURING THE CONSTRUCTION PROCESS. WATER VALVES, WATER VALVE BOXES OR FIRE HYDRANTS DAMAGED DURING CONSTRUCTION SHALL BE REPAIRED BY THE CONTRACTOR AT HIS OWN EXPENSE.

CONSTRUCTION METHODS AND MATERIALS TO COMPLY WITH CITY OF WICHITA STANDARD SPECIFICATIONS.

AS-BUILT
 8/16/04
 Date
Chris Duggan
 Signed

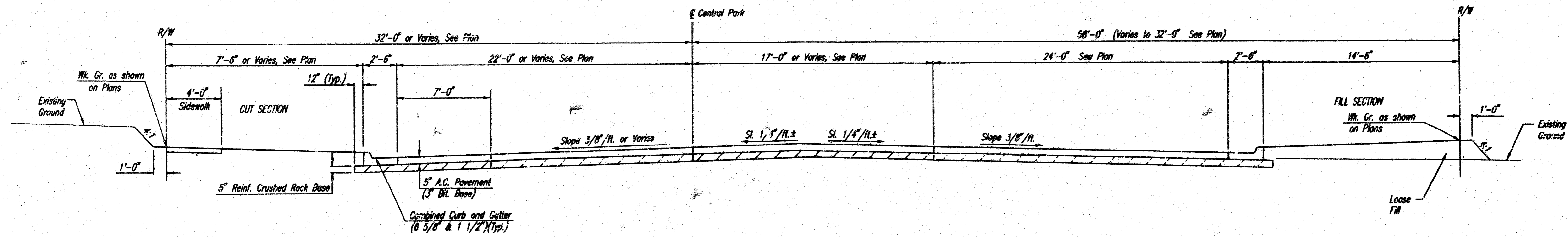


MARCH 2004

PLANS PREPARED BY

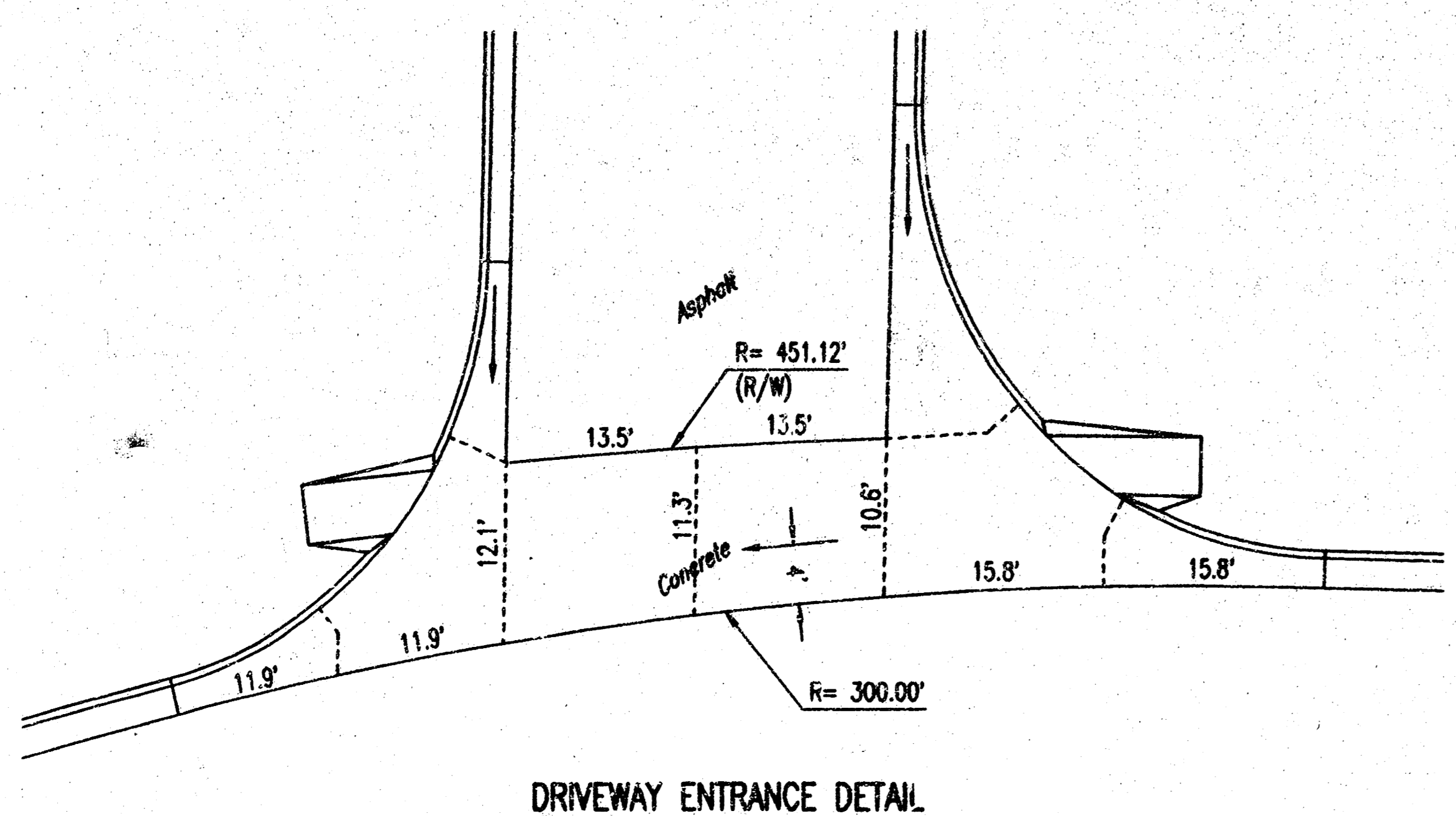
PROFESSIONAL ENGINEERING CONSULTANTS, P.A.
 ENGINEERS
 WICHITA, KANSAS



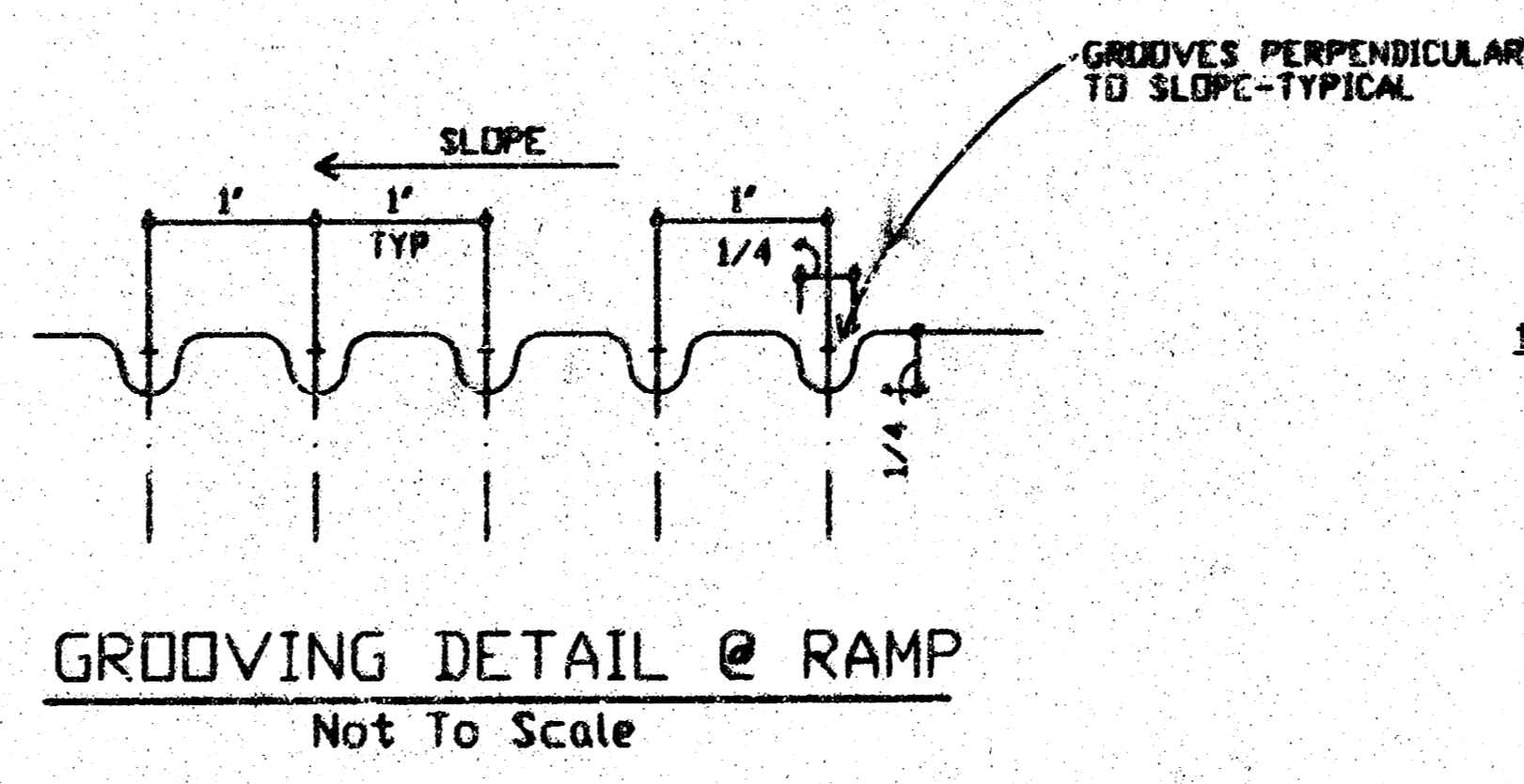


TYPICAL SECTION
Sta. 48+40.83 to Sta. 51+08.40

(TYPE A)
STANDARD WHEELCHAIR RAMP
WITH DETECTABLE WARNING
CONSTRUCTION DETAIL FOR STREETS
WITH COMBINED CURB & GUTTER

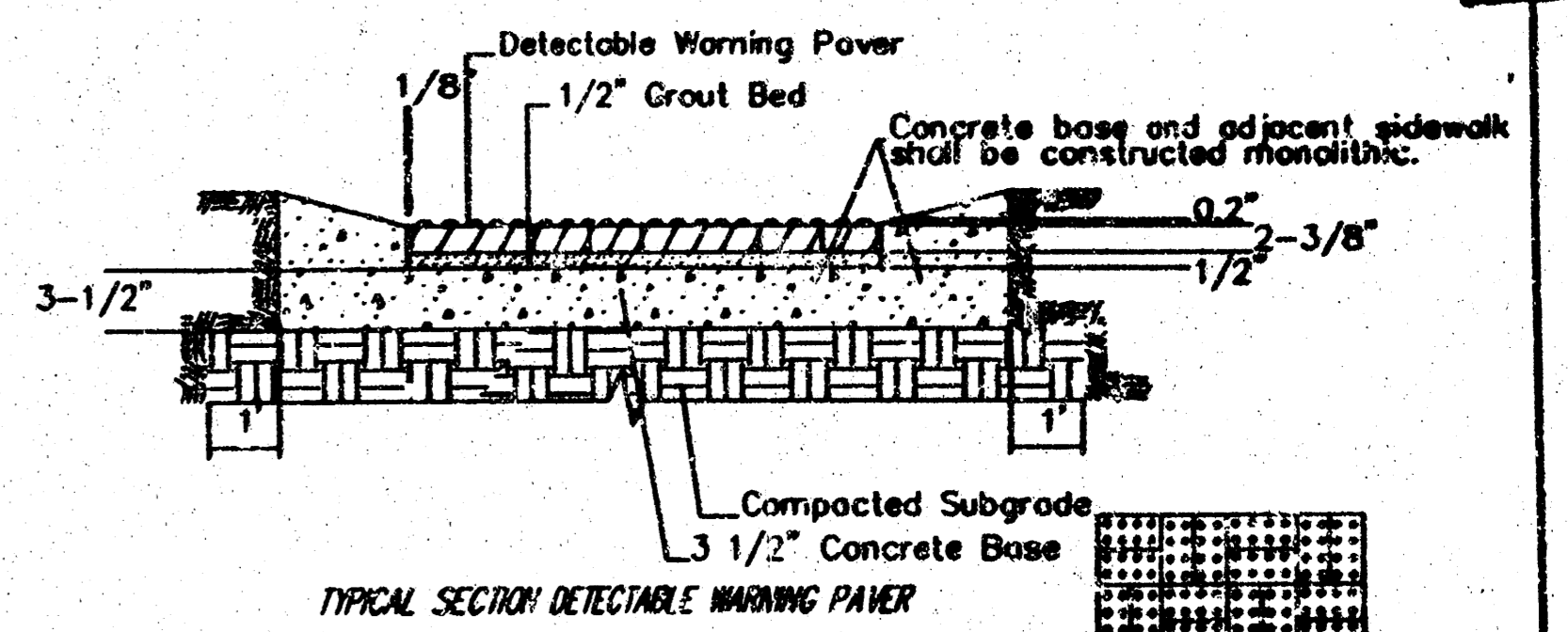
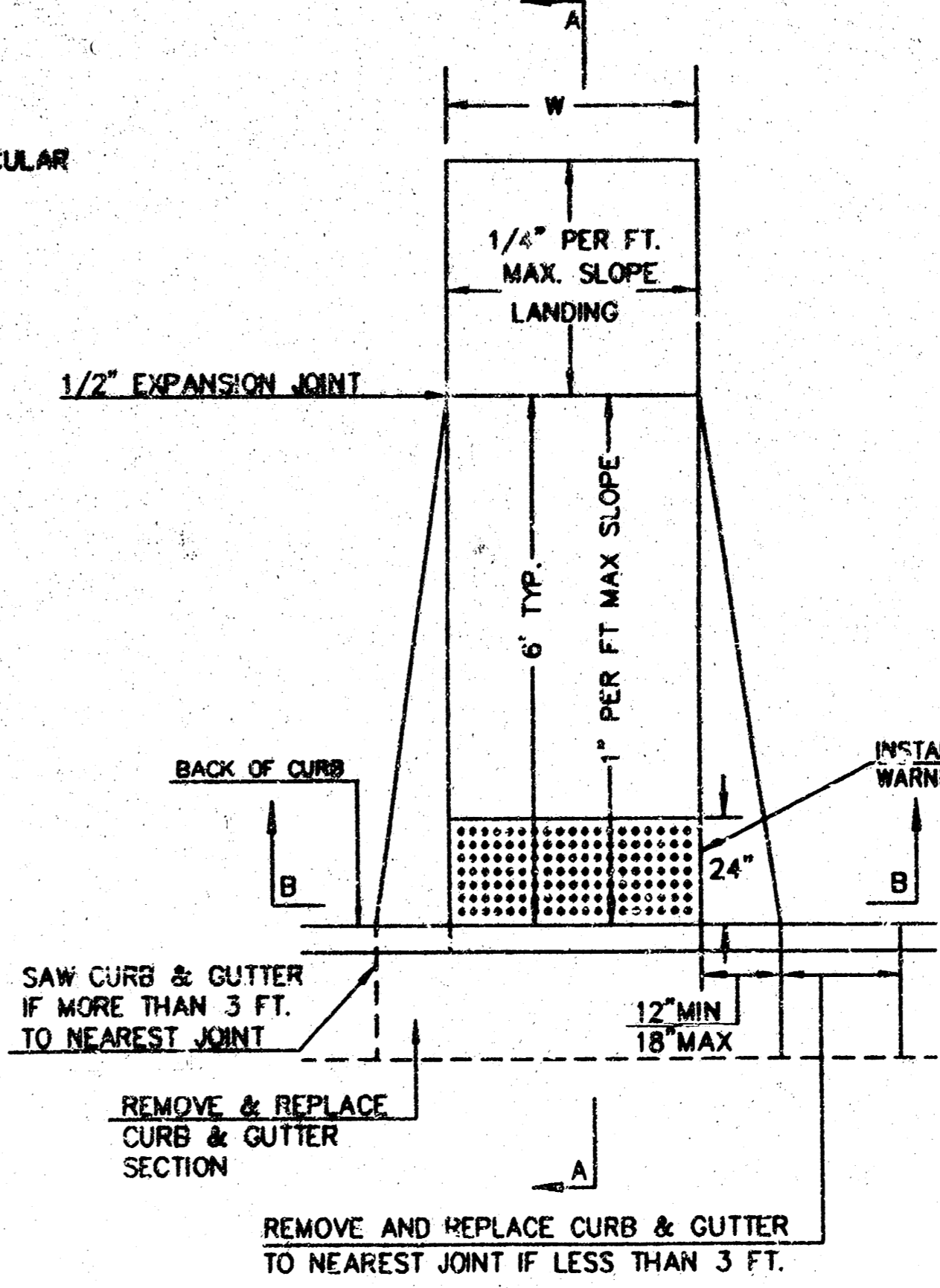


DRIVEWAY ENTRANCE DETAIL

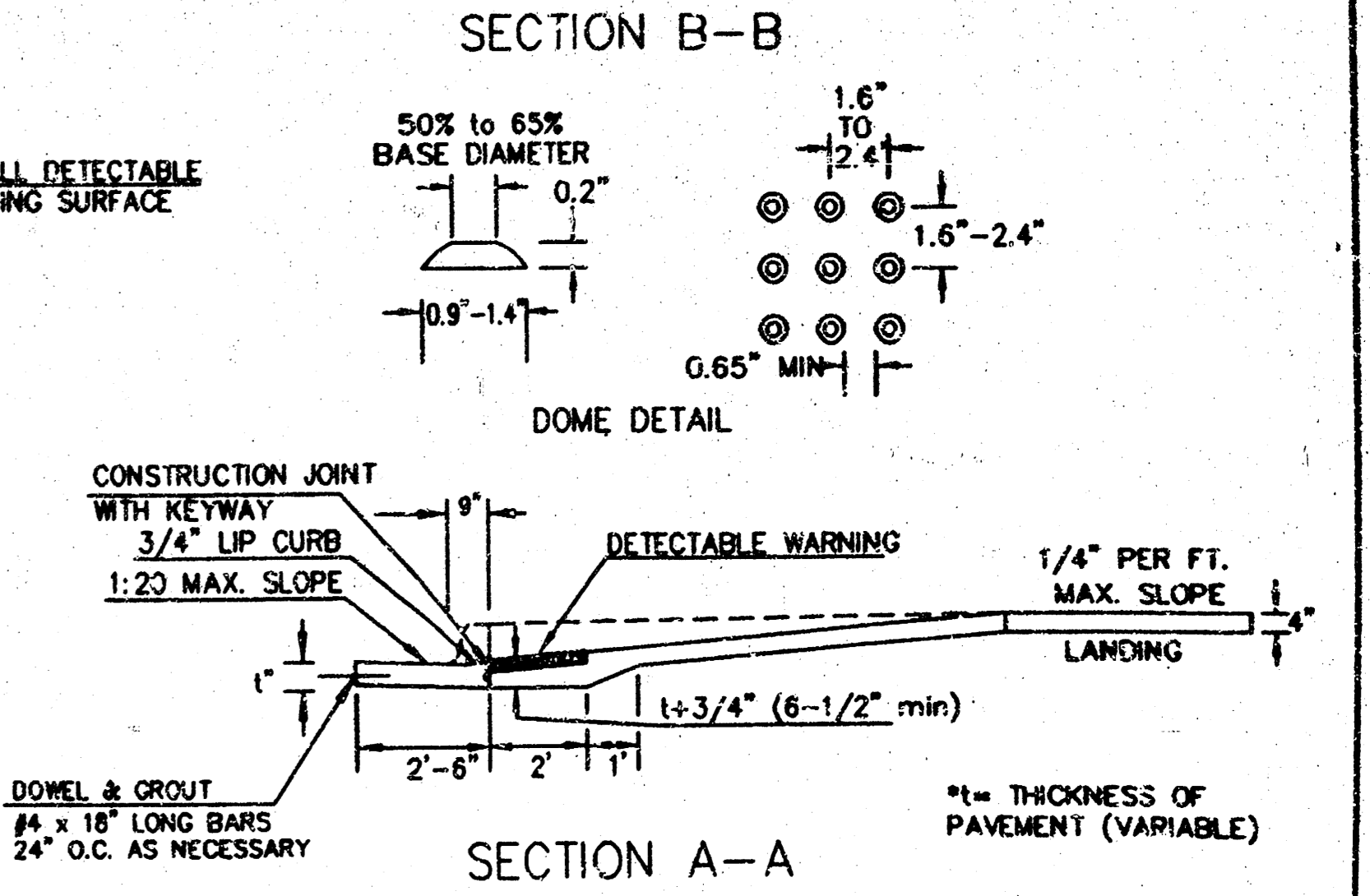


GROOVING DETAIL @ RAMP
Not To Scale

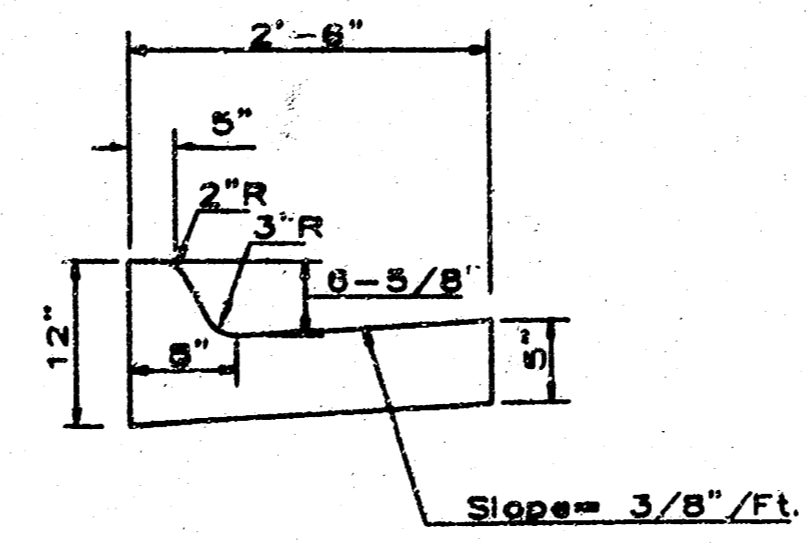
W= 4'0" FOR STANDARD RAMP
W= 5'0" FOR RAMP AT SCHOOL CROSSWALKS
(OR TO MATCH EXISTING)



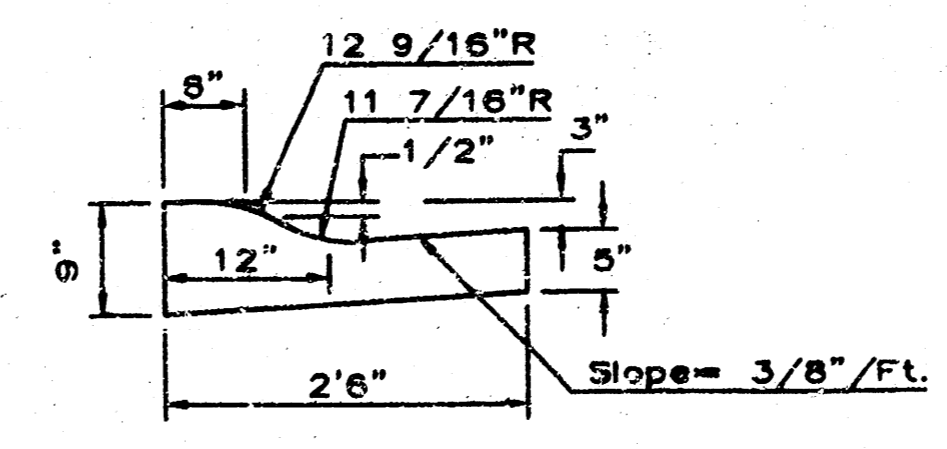
NOTE: RAMP TO COMPLY WITH LATEST ADAAG GUIDELINES
PAVEMENT DETECTABLE WARNING PAVERS (OR AN APPROVED EQUAL) SHALL
BE USED IN ALL WHEELCHAIR RAMP. THE RED PAVEMENT SHALL BE INSTALLED USING
A BASKET WEAVE/PARQUET PATTERN. OTHER PATTERNS MAY BE USED WITH APPROVAL OF
ENGINEER. SAND FILL JOINTS ALSO DOMES IN THE DIRECTION OF PEDESTRIAN TRAVEL.



SECTION A-A



COMBINED CURB & GUTTER



COMBINED ROLL TYPE CURB & GUTTER

	Revision No. By Date	
	NEWMARKET SQUARE TARGET NW TYPICAL PAVEMENT SECTION	
Professional Engineering Consultants, P.A. 303 S. LOPEKA • WICHITA, KANSAS 67202 316-262-2691 • FAX 316-262-3003		
Designed by BER Drawn by GJR	Job No. 02693-002 Date September, 2003	Sheet 3 of 3

14 08 03 08

DSNR: BER OPER: GJR SCALE: 1"=10.00'
 03/2002\02693\002\ paving\typ-sec_04-08-2004 10:17:42 am