

RESOURCE LIST

GAS CO.
 KANSAS GAS & ELECTRIC
 MIKE PRUITT
 1021 EAST 26TH STREET NORTH
 WICHITA, KANSAS 67218
 PH: (316) 832-3187

ELECTRIC
 KG&E (WESTAR ENERGY)
 BECKY THOMPSON
 1900 E. CENTRAL
 WICHITA, KANSAS 67201
 PH: (316) 261-4320

SANITARY SEWER
 CITY OF WICHITA ENGINEERING
 VICKY HUANG, P.E.
 455 N. MAIN (7th FLOOR)
 WICHITA, KANSAS 67202
 PH: (316) 268-4238

WATER
 CITY OF WICHITA WATER & SEWER DEPT.
 BILL PERKINS
 455 N. MAIN (8th FLOOR)
 WICHITA, KANSAS 67202
 PH: (316) 268-4555

CITY OF WICHITA ENGINEERING
 JULIANNE KALLMAN, P.E.
 455 N. MAIN (7th FLOOR)
 WICHITA, KANSAS 67202
 PH: (316) 268-4632

TELEPHONE
 SWBT
 JOHN SHORT
 154 NORTH BROADWAY, ROOM 210
 WICHITA, KANSAS 67202
 PH: (316) 268-3122

SHEET INDEX

- R-0 TITLE SHEET
- R-1 SURVEY DATA SHEET
- R-2 TYPICAL SECTIONS
- R-3 PLAN & PROFILE
- R-4 STRIPING PLAN
- R-5 CURB INLET DETAIL
- R-6 DRIVEWAY JOINT LAYOUT
- R-7 TRAFFIC CONTROL PLAN

Legal Description

A tract of land lying in the Northwest Quarter (NW/4) of Section Four (4), Township Twenty-eight (28) South, Range One (1) East of the 6th P.M., also being a part of the recorded plat of KINKAID PARK, an addition to Wichita, Sedgwick County, Kansas, being more particularly described as follows:
 Lot Two (2), Block A, KINKAID PARK, an addition to Wichita, Sedgwick County, Kansas.
 Said tract contains a mathematical error of closure of 1:94,592.190.
 Said tract contains 1,180,290 square feet or 27.0957 acres more or less.

PROPOSED DECEL LANE ALONG THE EAST SIDE OF BROADWAY AVENUE TO SERVE

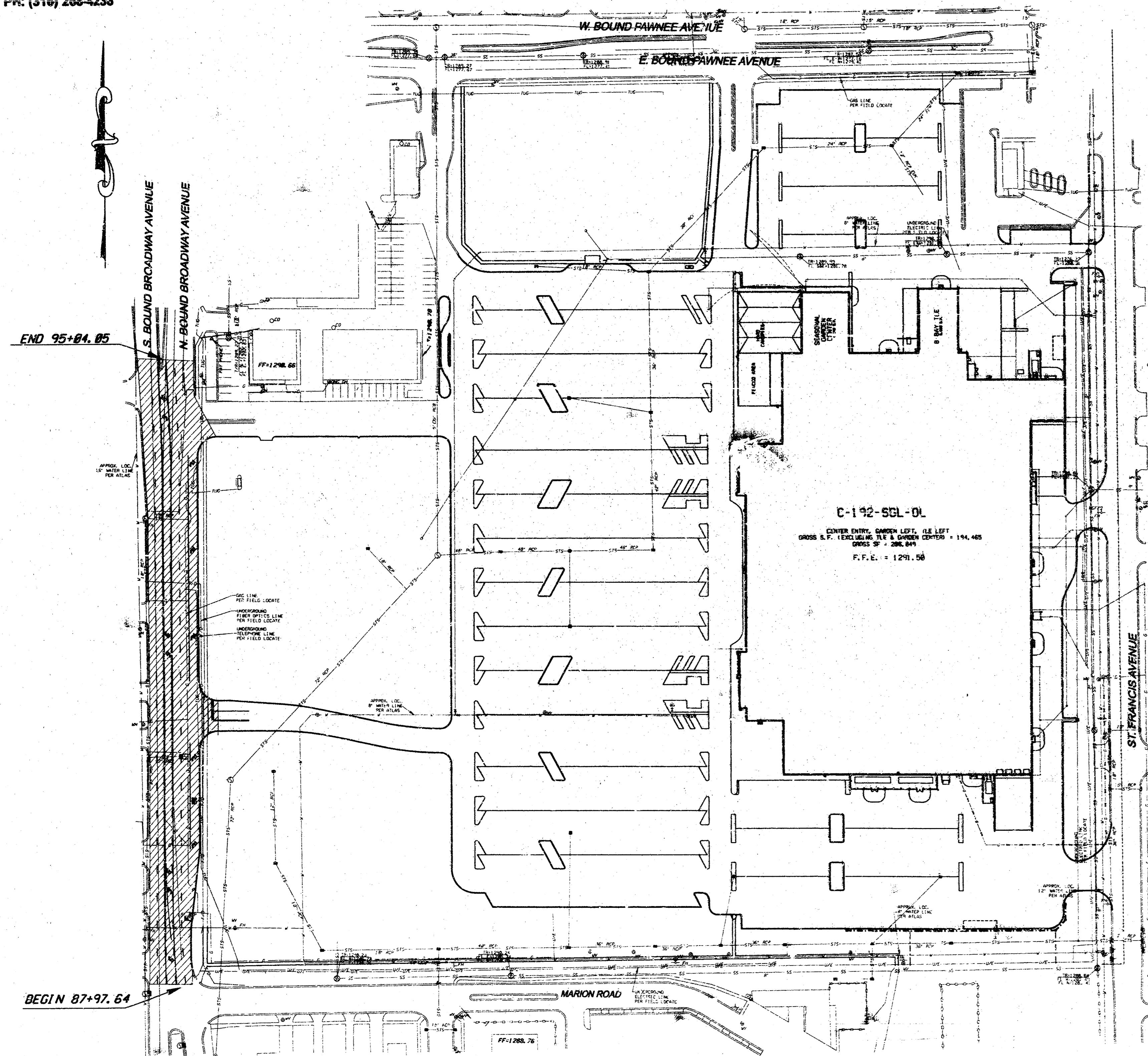
WAL*MART

SUPERCENTER #1099-01

PRIVATE PROJECT NUMBER 147PPP (607879)

CITY OF WICHITA, KANSAS

NEIL D. CABLE, P.E. CITY ENGINEER
 MONTH 2003



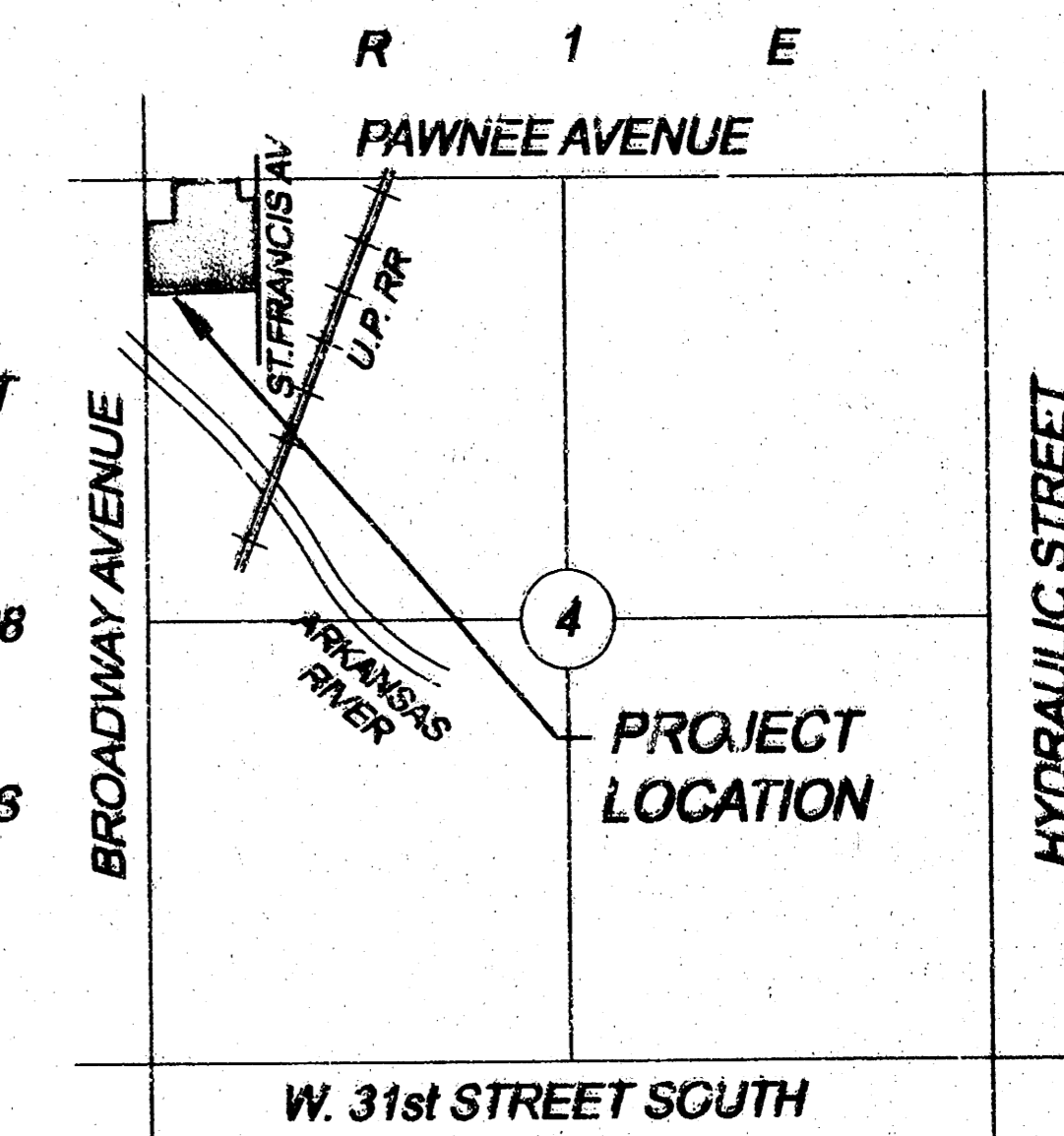
APPROVED AS SHOWN
 BY CITY ENGINEER OF WICHITA

Sanitary Sewer _____
 Storm Sewer _____
 Driveway Approaches _____
 Water Mains _____
 Paving URH 8/22/03

NOTE TO CONTRACTORS
 Inspection and testing for this project are to be provided by a Licensed Consulting Engineering Firm under contract with the Owner/Developer. Said inspection to be in accordance with the City of Wichita standard construction engineering practices and certified by a Licensed Professional Engineer. No work shall be performed in dedicated easements or public right-of-way by the Contractor without such inspection nor shall any work be commenced without written authorization by the City Engineer.

General Notes

1. Contractor will be required to provide a minimum notice of 48 hours to utility companies prior to starting any excavation as follows:
 Kansas One-Call _____ 687-2478
- The Contractor must notify the following in case of an emergency:
 Cox Communications 262-8661
 Kansas Gas Service Company 393-0699
 Kansas Gas & Electric Company 393-7689
 Peoples Gas Company 1-888-383-8557
 Southwestern Bell Telephone Company 1-888-678-8398
 City of Wichita Water Department 268-4871
2. The Contractor shall give appropriate owners and/or tenants of developed property directly abutting the construction of this project a minimum of ten (10) days advanced notice prior to start of construction.
3. The Contractor shall be responsible for preserving property trees. The Contractor will be required to re-establish any property trees which are damaged or destroyed by his construction operations. Such trees shall be re-established by a licensed land surveyor in accordance with state law.
4. All disturbed 1/2" areas not intended for pavement or sidewalk construction shall be seeded with Kansas Premium Fescue Blend at a rate of 8 lb./1000 Sq. Ft., fertilized with a 16-20-8 ratio at a rate of 4 lb./1000 Sq. Ft., and mulched with Prairie Hay at a rate of 50 lb./1000 Sq. Ft. Mulch shall be "topdressed" with forks or punched into soil to reduce loss due to wind.
5. Polyvinyl Chloride Pipe (PVC) installed on this project shall conform to the City of Wichita Standard Specifications for Sewer Line Construction. The PVC pipe shall be rated for SDR-35. All PVC pipe shall be installed in accordance with the manufacturer's recommendations. Waterstop gaskets around the pipe shall be installed in all manhole walls.
6. Reinforced Concrete Pipe (RCP) installed on this project shall conform to the City of Wichita Standard Specifications for Sewer Lines Construction. RCP pipe for storm sewer shall be Class III pipe. Joints shall be tongue and groove joints sealed with either flexible plastic gaskets or cement mortar.
7. Storm sewer Contractor shall conform with roof drain contractor the size, location and pipe material of roof drain pipes into manholes prior to manhole construction. Storm sewer Contractor shall plug drain connections into manhole since roof drains shall be installed by drain contractor.
8. Utility service lines, poles, valve boxes, meters, et cetera are to be adjusted as necessary prior to construction unless the plans specifically call for their adjustment by the Contractor or unless the plans specifically identify a utility to be adjusted by its owner during construction. Existing utilities and their location, as shown on the plans represent the best information obtainable for design and shall be field verified. The contractor will be required to work around existing utilities within the right-of-way which do not conflict with proposed construction.



LOCATION MAP
 NOT TO SCALE

AS-BUILTS SEPT. 2004

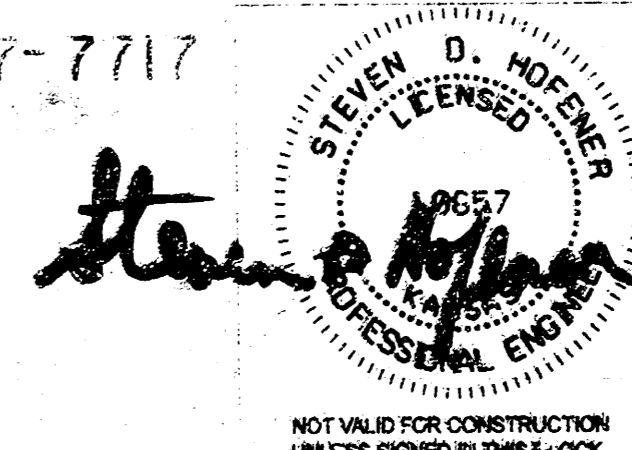
TITLE SHEET
 PRIVATE PROJECT NO. 147PPP (607879)
 PAWNEE AVENUE & BROADWAY AVENUE
 SUPERCENTER #1099-01

CITY OF WICHITA
 SEDGWICK COUNTY, KANSAS

TRAFFIC ENGINEERING CONSULTANTS
 6000 S. Western Ave. Suite 300 - Oklahoma City, OK 73159
 PH: 405-720-7721 Fax: 405-720-9848

No.	Revision	By	Date

DATE: 8/17/03 SCALE: N.T.S.
 DRAWN BY: _____
 PROJECT NO.: _____
 ENGINEER: STEVEN D. HOFFNER, P.E. #10857



BENCHMARKS

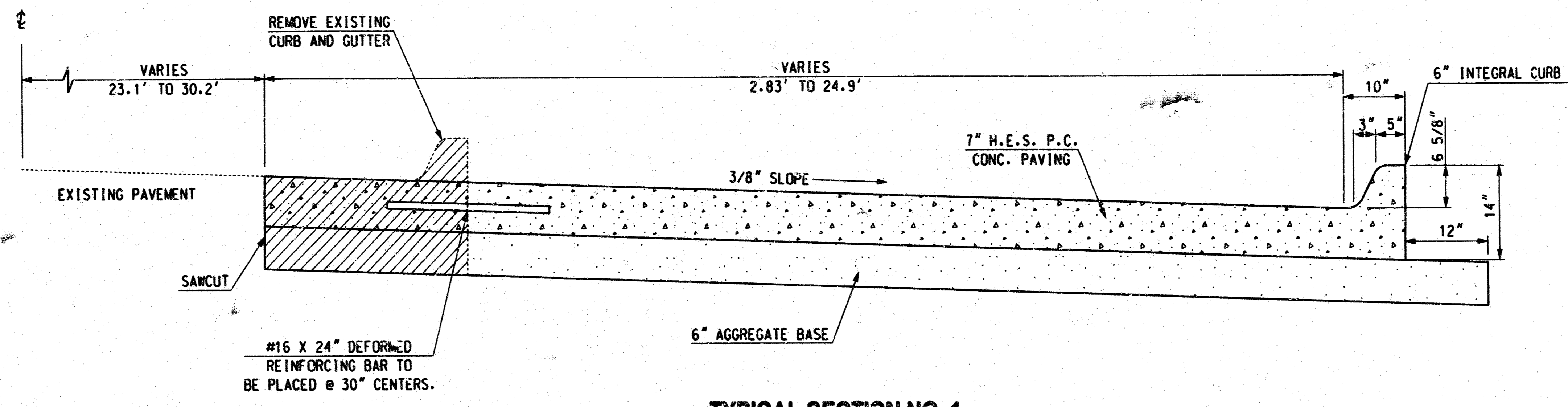
- BM # 1 CUT "X" ON NOSE OF MEDIAN AT PAWNEE & TOPEKA
 ELEV= 1290.14
- BM # 2 CUT "X" ON W. END MEDIAN CL PAWNEE N. OF N.E. PROPERTY CORNER
 ELEV= 1288.16
- BM # 3 R.R. SPIKE IN POWER POLE APX. 25' N. OF S.E. PROP. COR. ON E. SIDE ST. FRANCIS
 ELEV= 1287.82
- BM # 4 CUT "X" ON TOP OF CURB @ S.E.S. BROADWAY & S. ENT. TO WAL-MART
 ELEV= 1290.08

- GROSS LENGTH OF PROJECT = 800 FT.
- EXCEPTIONS = NONE
- NET LENGTH OF PROJECT = 800 FT.
- NET LENGTH OF BRIDGES = NONE
- NET LENGTH OF ROAD = 800 FT.
- ADDITIONS = NONE

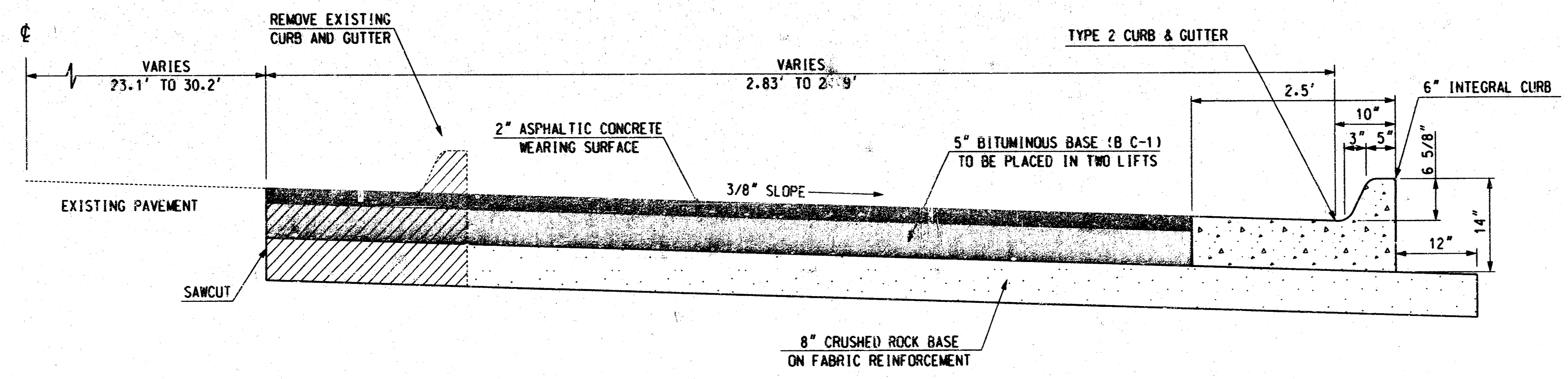
PAVING CONTRACTOR
 A RITCHIE COMPANY
 2872 N. RIDGE RD.
 P.O. BOX 7717
 WICHITA, KS. 67217-7717

18 02 01 03

REVISIONS		
NO.	DESCRIPTION	DATE



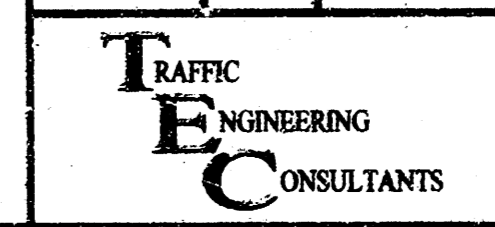
TYPICAL SECTION NO. 1
STA. 94+05.92 TO STA. 94+76.22 RIGHT



TYPICAL SECTION NO. 2
STA. 88+35.63 TO STA. 94+05.92 RIGHT

AS-BUILTS SEPT. 2004

Design TEB 08/07/03
 Drawn CCC 08/07/03

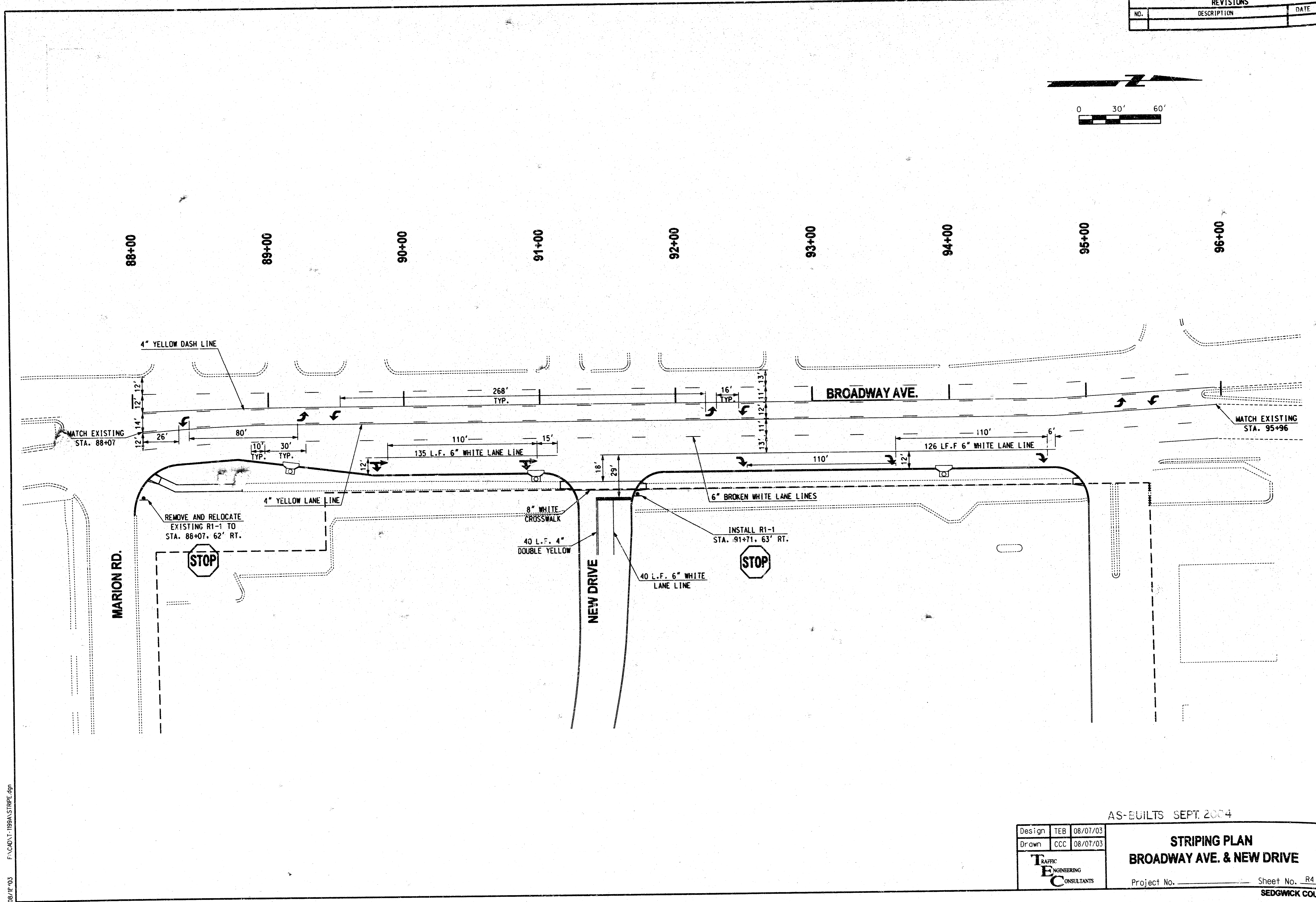
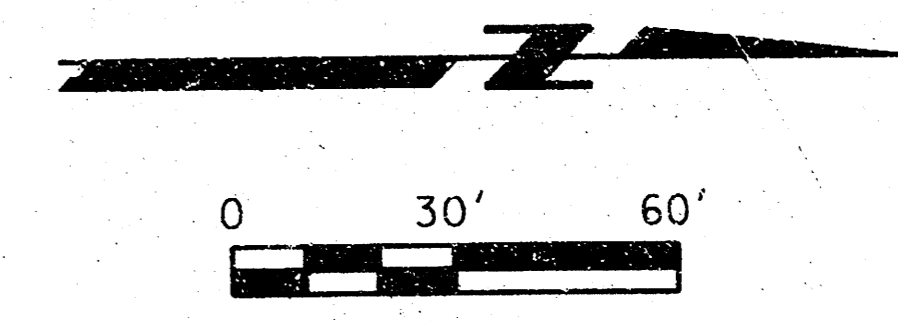


TYPICAL SECTIONS

Project No. _____ Sheet No. R2
 SEDGWICK COUNTY

08/19/03 F:\ADMIN\1089\1\TYP.dgn

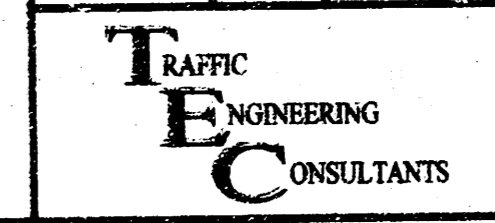
REVISIONS		
NO.	DESCRIPTION	DATE



08/18/03 F:\CAD\1199A\STRIPING.dgn

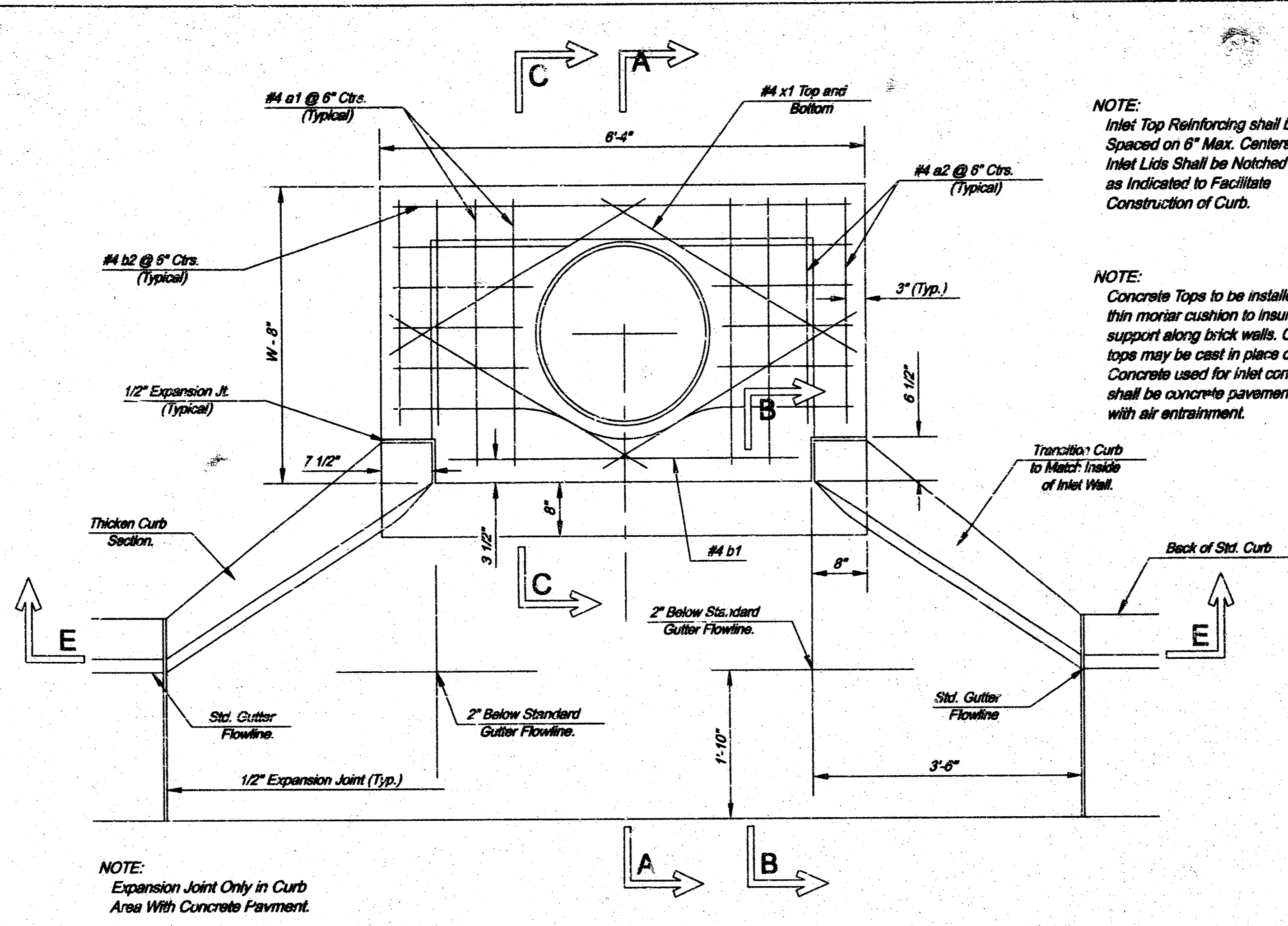
AS-BUILTS SEPT. 2004

Design	TEB	08/07/03
Drawn	CCC	08/07/03



**STRIPING PLAN
BROADWAY AVE. & NEW DRIVE**

Project No. _____ Sheet No. R4
SEDGWICK COUNTY

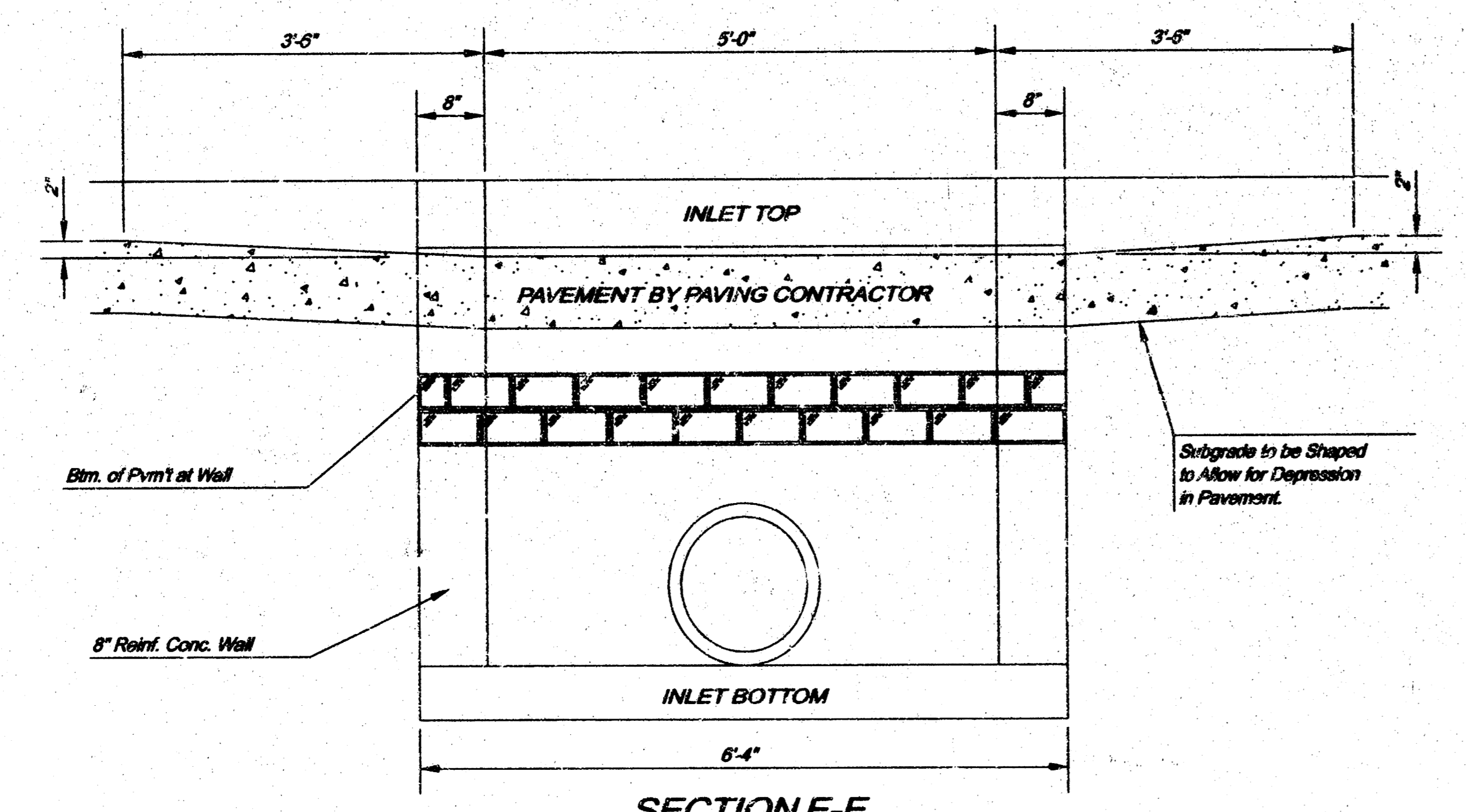


NOTE:
Inlet Top Reinforcing shall be Spaced on 6" Max. Centers. Inlet Lids Shall be Notched Out as Indicated to Facilitate Construction of Curb.

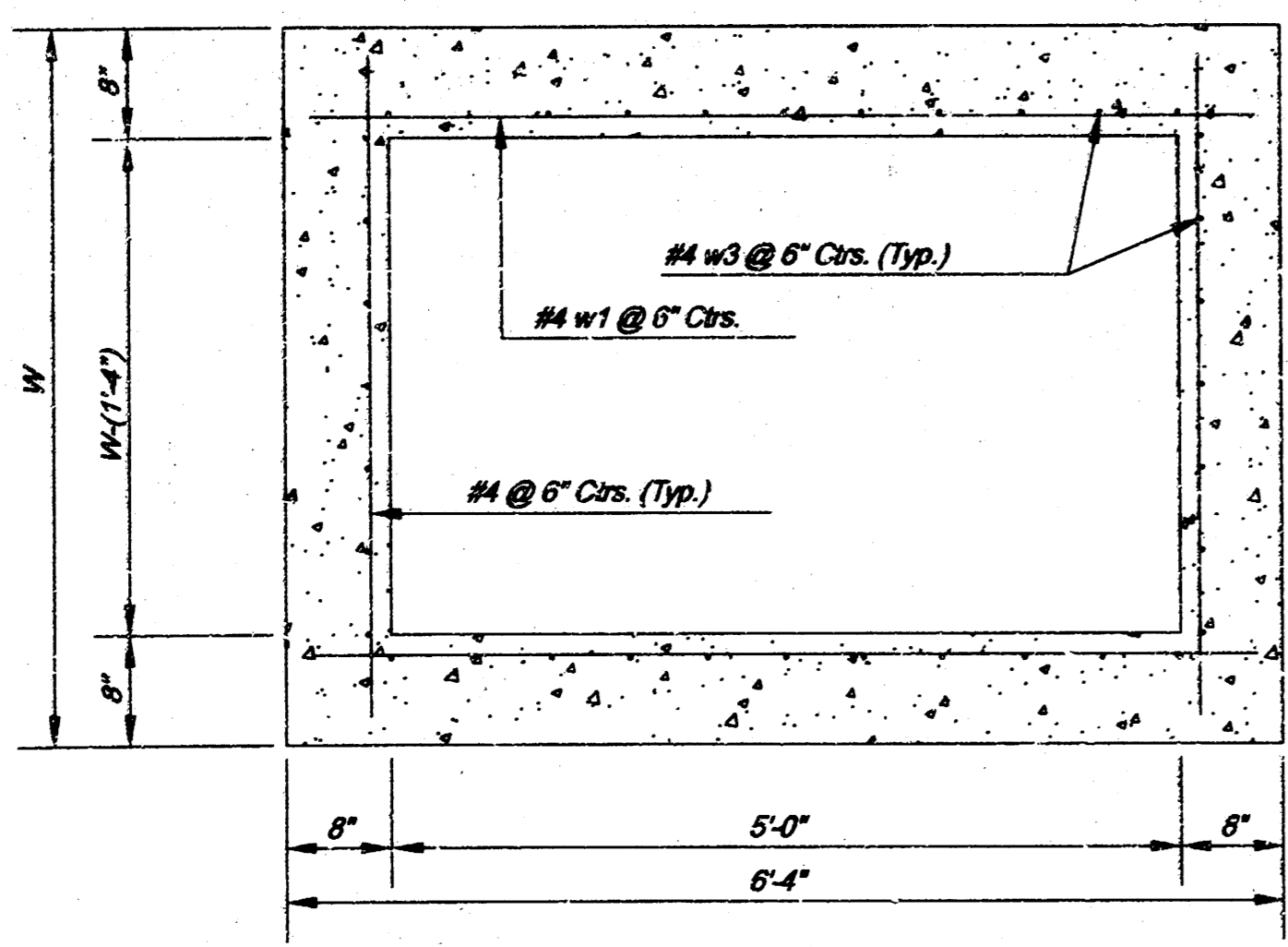
NOTE:
Concrete Tops to be installed on thin mortar cushion to insure full support along brick walls. Concrete tops may be cast in place or precast. Concrete used for inlet construction shall be concrete pavement mix with air entrainment.

NOTE:
Expansion Joint Only in Curb Area With Concrete Pavement.

PLAN

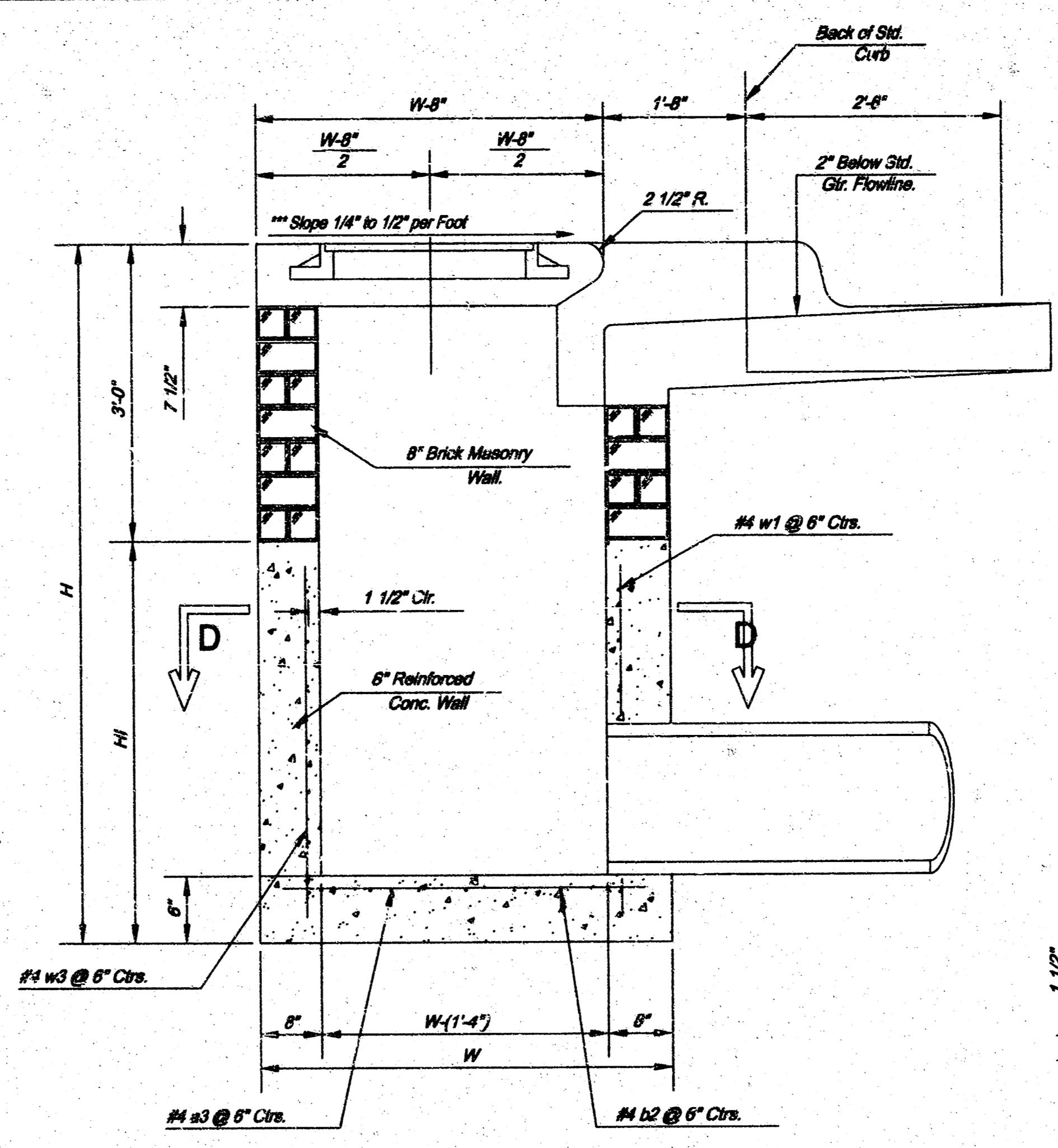


SECTION E-E



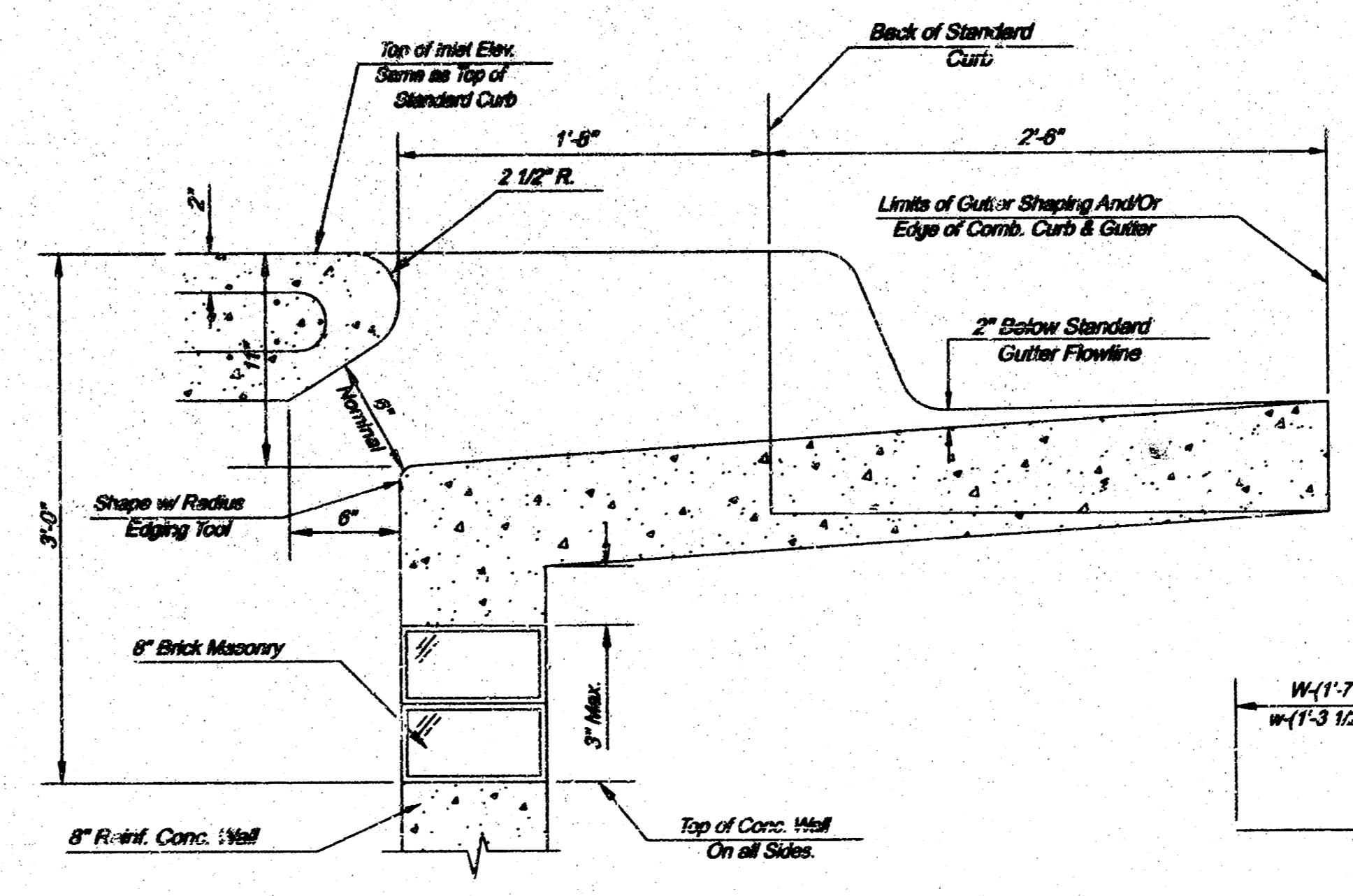
SECTION D-D

NOTE: Contractor shall have the option of constructing 8" brick masonry walls between the concrete inlet base and top on this inlet when W=5'-4" and H=7'-0" or less.
Additional curb and gutter construction necessary to connect set-back inlet to pavement will be paid for at its unit price bid for each inlet hookup.
Inlet invert shall be shaped with 9 sack sand mix concrete to create flow channels and to increase hydraulic efficiency such that the inlet will self-cleaning between all inlet and/or outlet pipes.
The ends of all pipes installed in inlets shall be cut off flush with the inside face of the inlet wall.

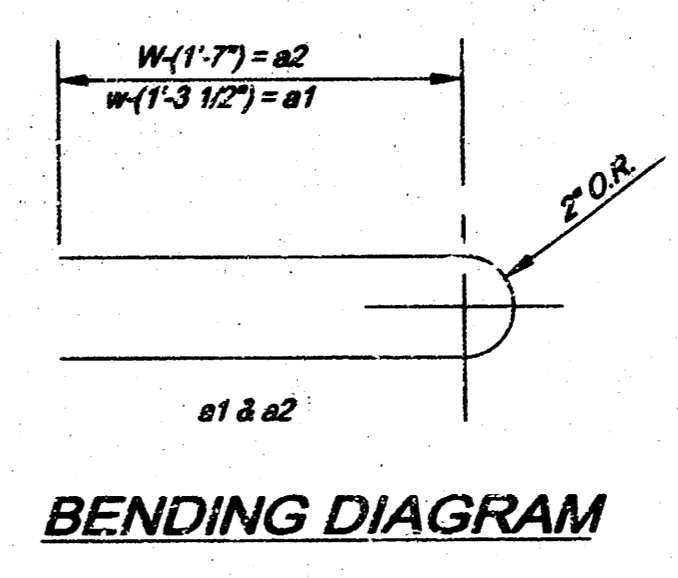


SECTION A-A

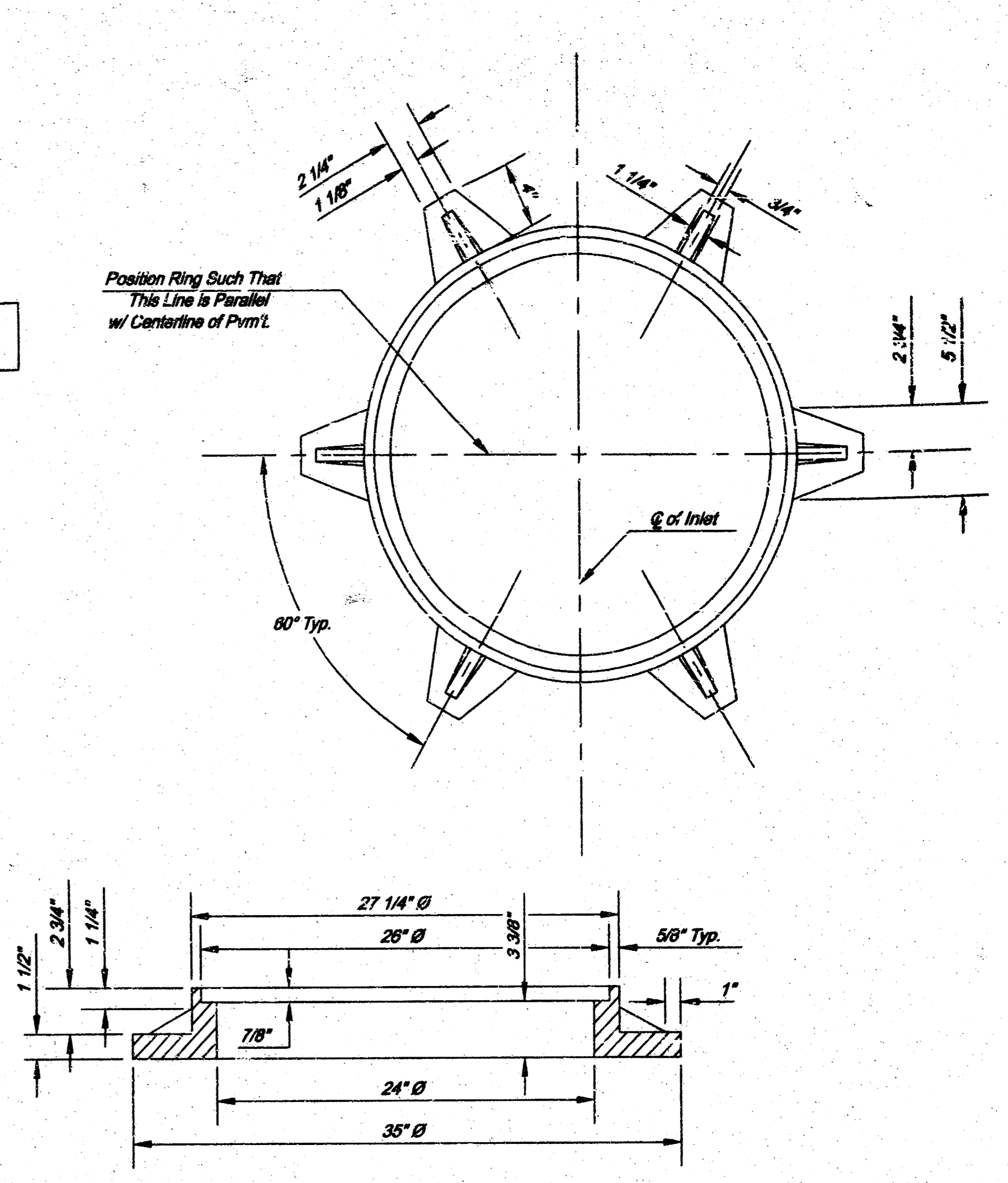
NOTE: Slope of Inlet tops to Match Sidewalk or Facing Slopes within Limits Indicated.



SECTION B-B

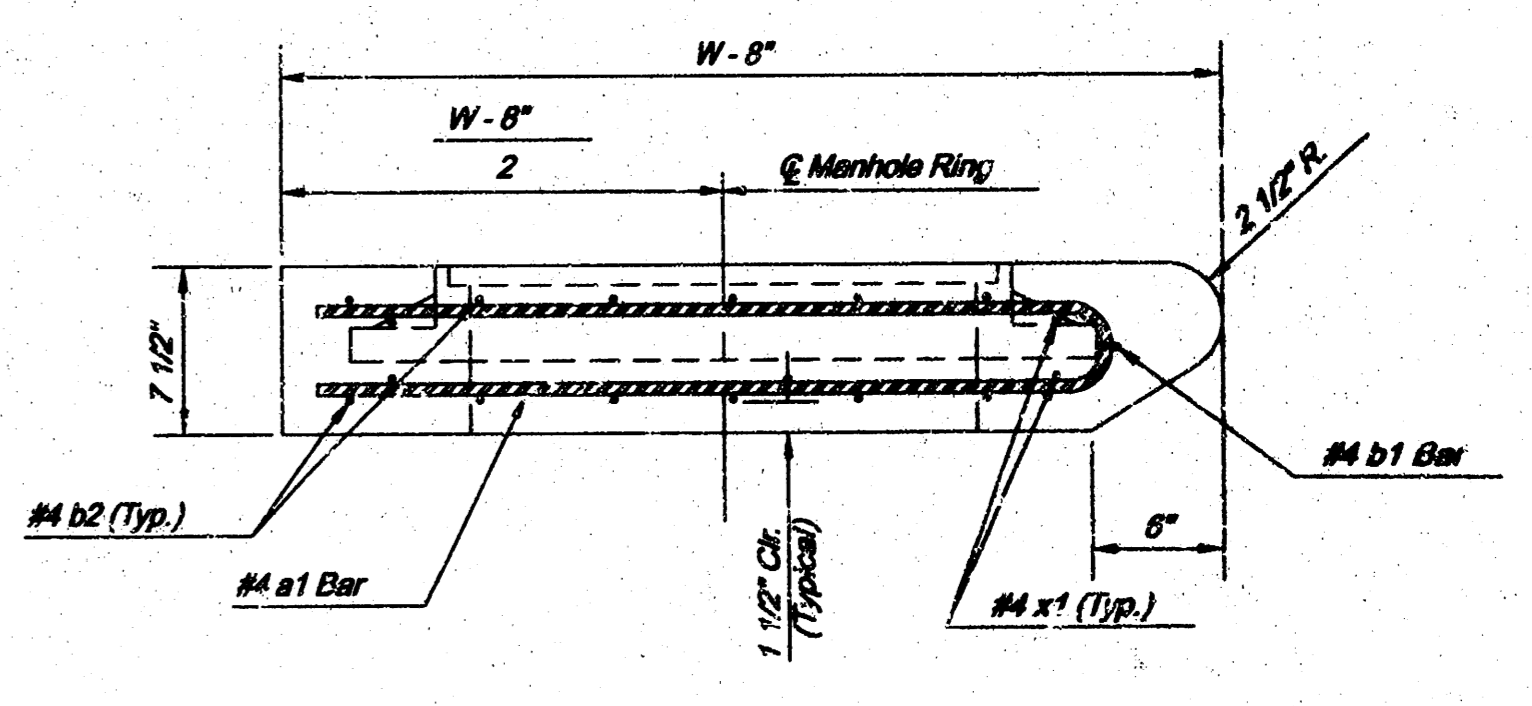


BENDING DIAGRAM



MANHOLE RING AND COVER

Weight = 180 Lbs.
See City of Wichita Standard Manhole Ring and Cover Detail Sheet for Cover Details to Be Used With Inlet Frame.



SECTION A-A

W	PRE-CAST TOP SIZE	PIPE SIZE	CU. YD. CONC.
4'-4"	3'-6" x 6'-4" x 1'-10"	21" & SMALLER	0.281
5'-4"	4'-0" x 6'-4" x 1'-10"	24" & 30"	0.511
6'-4"	5'-0" x 6'-4" x 1'-10"	36" & 42"	0.841
7'-4"	6'-0" x 6'-4" x 1'-10"	48" & 54"	1.771
8'-4"	7'-0" x 6'-4" x 1'-10"	60" & 66"	2.921

PRECAST SLAB AND FLOOR REINFORCING											
MARK	SIZE	W=4'-4"		W=5'-4"		W=6'-4"		W=7'-4"		W=8'-4"	
		NO.	LENGTH	NO.	LENGTH	NO.	LENGTH	NO.	LENGTH	NO.	LENGTH
*a1	#4	6	6'-7"	6	6'-7"	6	10'-7"	6	12'-7"	6	14'-7"
a2	#4	4	6'-0"	4	6'-0"	4	10'-0"	4	12'-0"	4	14'-0"
a3	#4	13	4'-1"	13	5'-1"	13	6'-1"	13	7'-1"	13	8'-1"
b1	#4	1	8'-0"	1	4'-0"	1	4'-0"	1	4'-0"	1	4'-0"
*b2	#4	23	6'-1"	29	6'-1"	35	6'-1"	41	6'-1"	47	6'-1"
*c1	#4	8	3'-10"	8	4'-2"	8	4'-5"	8	4'-10"	8	5'-2"

WALL REINFORCING											
MARK	SIZE	W=4'-4"		W=5'-4"		W=6'-4"		W=7'-4"		W=8'-4"	
		NO.	LENGTH	NO.	LENGTH	NO.	LENGTH	NO.	LENGTH	NO.	LENGTH
w1	#4	①	6'-1"	①	6'-1"	①	6'-1"	①	6'-1"	①	6'-1"
w2	#4	①	4'-1"	①	5'-1"	①	6'-1"	①	7'-1"	①	8'-1"
w3	#4	②	3'-10"	②	4'-2"	②	4'-5"	②	4'-10"	②	5'-2"

*Field Bars or Cut Reinforcing as Required for Clearance.
① 4 (# - 12) (#4 - 21) Rounded down to nearest 0.5"
② H - 3"

08/19/03 F:\CAD\1-199A\1 Type 1A Single.dgn

AS-BUILTS SEPT. 2004

THE CITY OF WICHITA

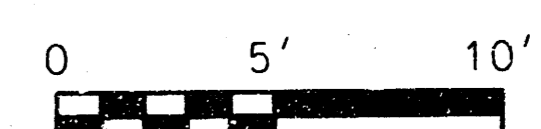
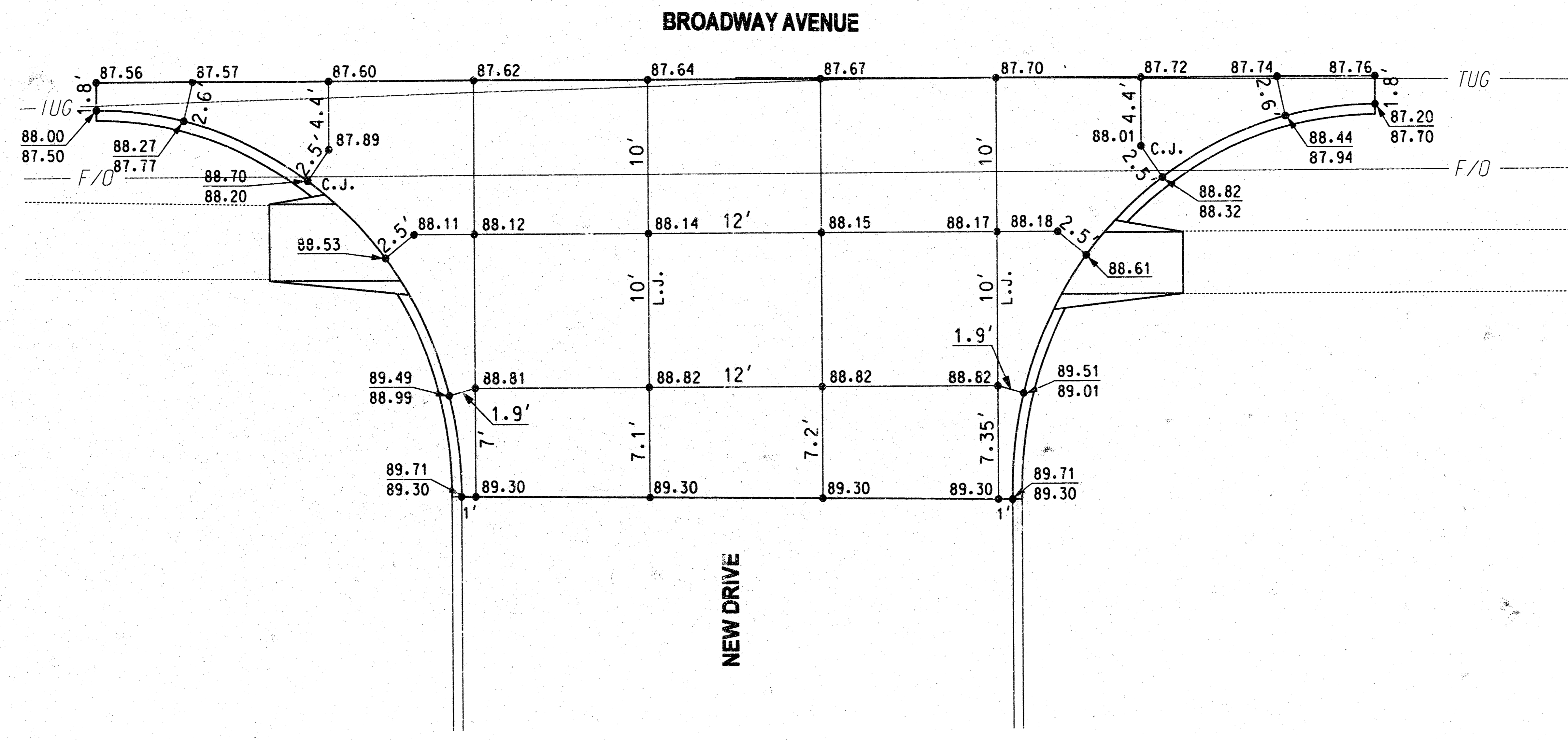
STANDARD TYPE 1-A Curb Inlet
OPENING = 6' x 5' - 0"

NEIL D. CABLE, P.E. - CITY ENGINEER

CITY ENGINEER'S OFFICE
CITY HALL - SEVENTH FLOOR
425 NORTH HULLS STREET
WICHITA, KANSAS 67202
(316) 265-4986
(316) 265-4114 FAX

PROJECT NUMBER _____ INDEX CODE _____
DATE MAR 96 SHEET NO. R5

REVISIONS		
NO.	DESCRIPTION	DATE



AS-BUILTS SEPT. 2004

Design	TEB	08/07/03
Drawn	SB	08/07/03



DRIVEWAY JOINT LAYOUT

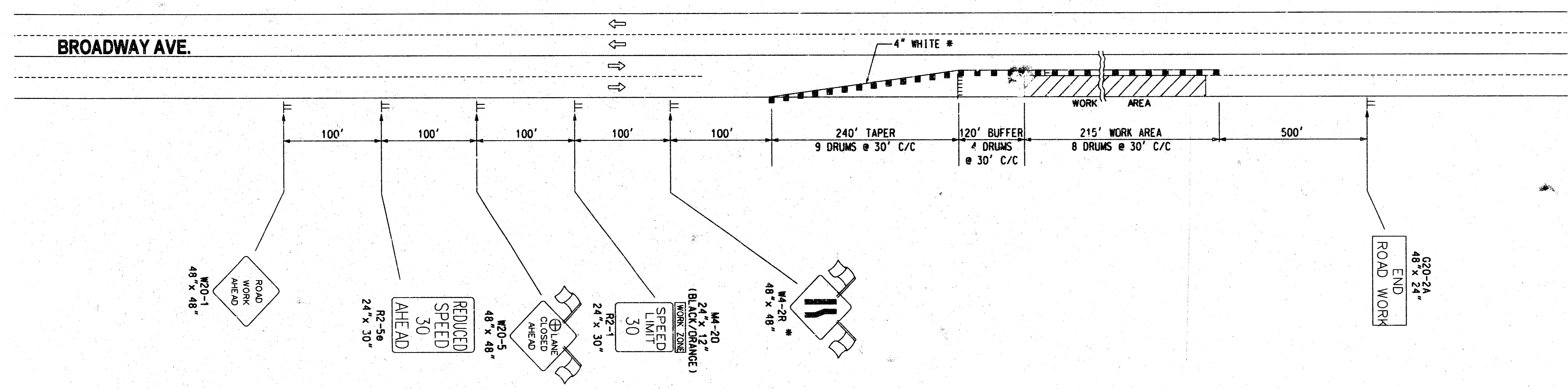
Project No. _____ Sheet No. R6

SEDGWICK COUNTY

08/19/03 F:\CAD\1-189A\plots.dgn

REFER TO STD. TE710 FOR ADDITIONAL INFORMATION ON TRAFFIC CONTROL SIGNS AND SIGN SPACING.
 REFER TO STD. TE702 FOR INFORMATION ON TAPERS AND CHANNELIZING DEVICES.
 REFER TO STD. TE700 FOR LENGTH OF BUFFER SPACE.

REVISIONS		
NO.	DESCRIPTION	DATE



A TRAILER OR TRUCK WITH AN ARROW DISPLAY MAY BE USED DURING DAYTIME IN PLACE OF THE ARROW DISPLAY. THE TRUCK SHOULD BE LOCATED BETWEEN THE BUFFER SPACE AND THE WORK AREA.

* FOR LEFT LANE CLOSURES USE W4-2L AND YELLOW EDGE LINE ALONG CHANNELIZING DEVICES.

- Channelizing Devices
- Type III Barricades
- ⊕ RIGHT OR LEFT

08/19/03 F:\CAD\1189A TRAFFIC CONTROL.dwg

AS-BUILTS SEPT. 2004

Design	TEB	08/07/03
Drawn	CCC	08/07/03

TRAFIC ENGINEERING CONSULTANTS

TRAFFIC CONTROL PLAN

Project No. _____ Sheet No. R7

18 05 01 03 SEDGWICK COUNTY