

# FRIENDS UNIVERSITY 3RD ADDITION STREET IMPROVEMENTS

ST. CLAIR: From the N.L. of Kellogg Drive to the  $\text{C}$  of Vacated Taft

PRIVATE PROJECT NUMBER 140 PPP (607879)

## GENERAL NOTES

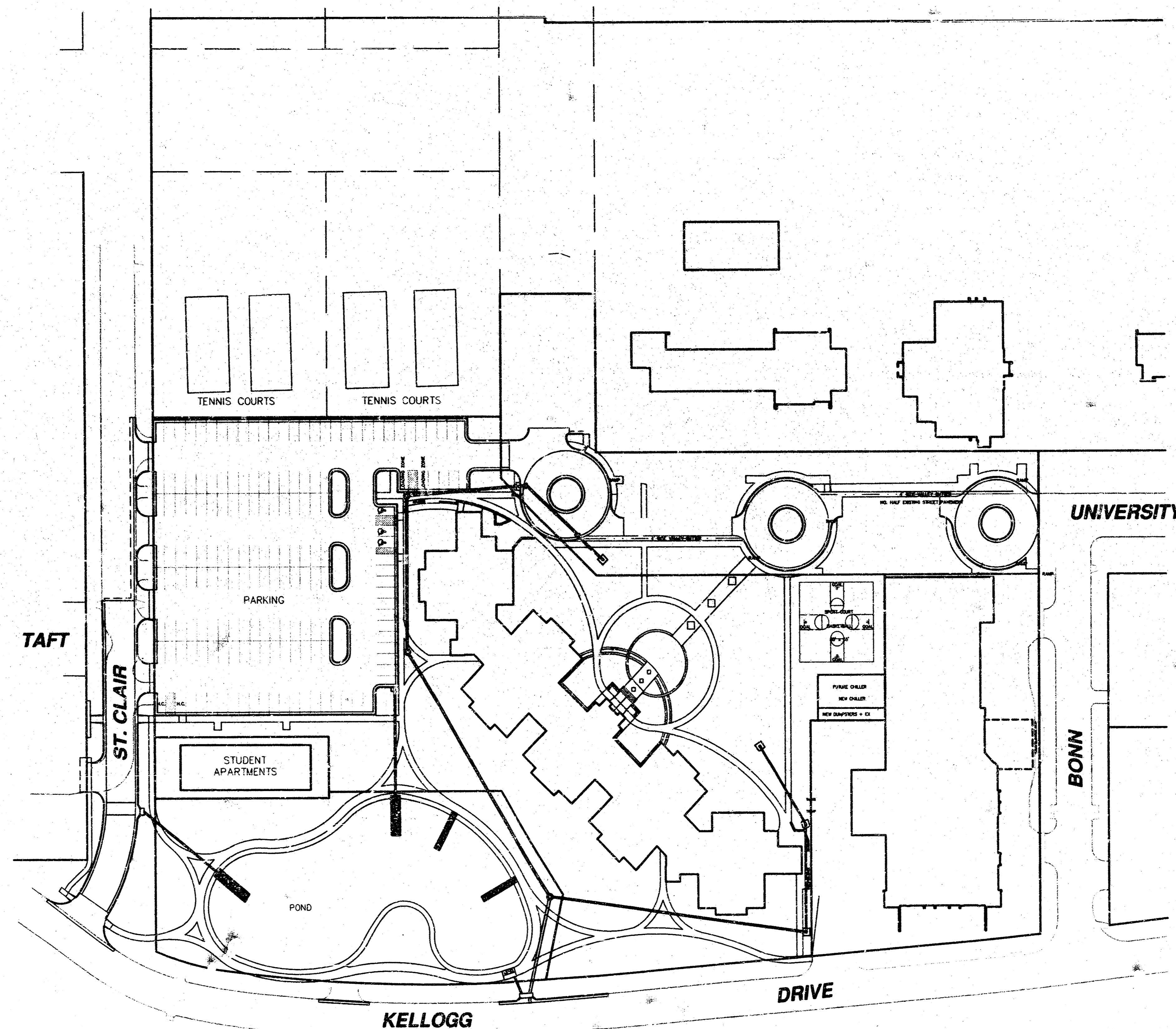
- Existing utilities and their location, as shown on the plans, represent the best information obtainable for design. The Contractor will be required to work around existing utilities within the right-of-way which do not conflict with proposed construction.
- A saw cut of the full depth of existing surface courses or pavement thickness shall be provided at locations where proposed construction abuts an existing surface course or pavement for which partial removal of that surface or pavement is required, except when such saw cuts are within three (3) feet of an existing joint the limits of removal shall be extended to the existing joint.
- Rubble from the removal of miscellaneous structures and excess excavation which is to be wasted shall be disposed of on sites to be provided by the Contractor.
- All disposal sites must be approved by the Kansas Department of Health and Environment. Material either stockpiled or disposed of in a flood plain would require a Kansas State Board of Agriculture permit. Any material dumped in waters of the United States or wetlands is subject to U.S. Corps permitting regulations. Any material buried or stockpiled beyond approved of Engineers construction limits would require additional archeological investigations unless buried in a previously approved borrow location.
- The Contractor shall be responsible for preserving property irons. The Contractor will be required to re-establish any property irons which are damaged or destroyed by his construction operations. Such irons shall be re-established by a licensed land surveyor in accordance with state laws.
- Contractor will be required to provide a minimum advance notice of forty-eight (48) hours to utility companies prior to starting any excavation as follows:
 

Kansas One-Call	687-2470
Cox Communications	262-0661
Kansas Gas Service	383-8600
Westar Energy	383-8600
Aquila Energy	1-800-303-0357
Southwestern Bell Telephone Company	1-800-286-8313
City of Wichita Water Department	262-6000
City of Wichita Sewer Maintenance	262-6000
- The Contractor must notify the following in case of an emergency:
 

Cox Communications	262-0661
Kansas Gas Service	383-8600
Westar Energy	383-8600
Aquila Energy	1-800-303-0357
Southwestern Bell Telephone Company	1-800-286-8313
City of Wichita Water Department	262-6000
City of Wichita Sewer Maintenance	262-6000
- This project is located within the limits of a larger project which will include building construction. The General Contractor for the project will submit a Storm Water Pollution Prevention Plan for the entire project prior to beginning any work on this street project.
- This project is to be constructed in accordance with City of Wichita Standard Specifications for the Construction of City Projects, and Policy on Construction of Public Works Improvements by Private Contract.
- No work shall begin on this project before required bonds are submitted to the City of Wichita, and the project inspector has been notified.

## BENCH MARKS

- City of Wichita (Brass Disc) in turn island N.E. corner traffic sign light base, 185.80' S. of Kellogg, 19.27' W. of  $\text{E}$  & S. bound Meridian.  
Elev. = 110.69 (City of Wichita datum)
- I.C. N. return N.W. corner Taft & Everett  
Elev. = 109.14 (City of Wichita datum)
- I.C. E. return N.E. corner Taft & St. Clair  
Elev. = 109.81 (City of Wichita datum)
- I.C. S. return S.W. corner intersection Bonn & University  
Elev. = 108.93 (City of Wichita datum)



## INDEX OF SHEETS

- TITLE PAGE & GENERAL NOTES
- TYPICAL SECTION
- PAVING PLAN
- VALLEY CUTTER DETAILS
- STANDARD DRIVE ENTRANCES
- SIGNING DETAILS
- PLAT COPY

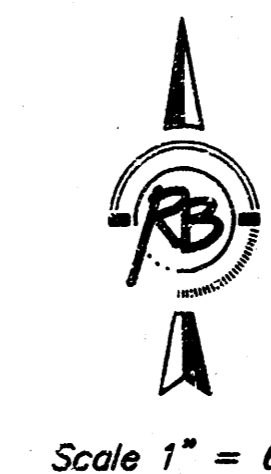
APPROVED AS NOTED  
BY CITY ENGINEER OF WICHITA

Sanitary Sewers \_\_\_\_\_  
Storm Sewers \_\_\_\_\_  
Driveway Approaches \_\_\_\_\_  
Water Mains \_\_\_\_\_  
Paving VRH 4/1/03

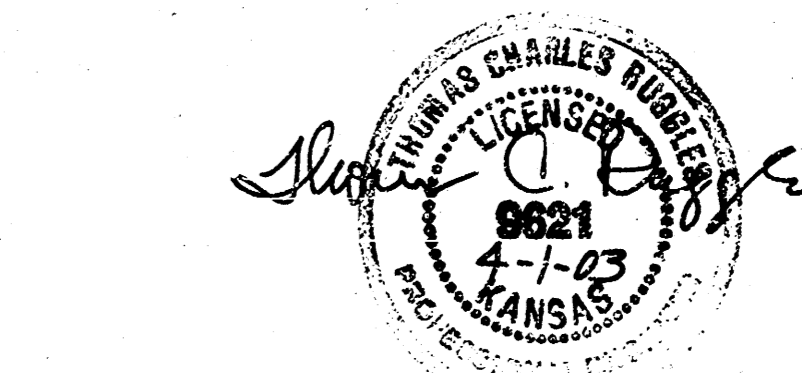
### NOTE TO CONTRACTORS

Inspection and testing for this project are to be provided by a Licensed Consulting Engineering Firm under contract with the Owner/Developer. Said inspection to be in accordance with the City of Wichita standard construction engineering practices and certified by a Licensed Professional Engineer. No work shall be performed in dedicated easements or public right-of-way by the Contractor without such inspection, nor shall any work be commenced without written authorization by the City Engineer.

CITY OF WICHITA, KANSAS  
NEIL D. CABLE, P.E., CITY ENGINEER



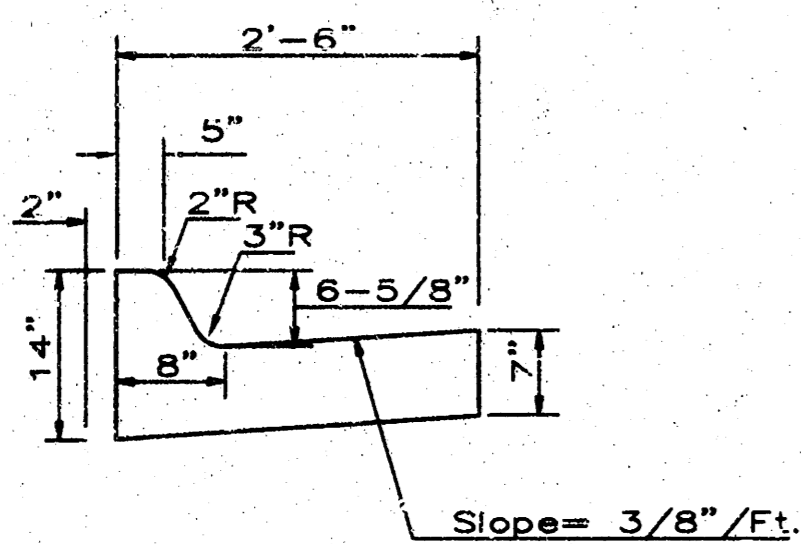
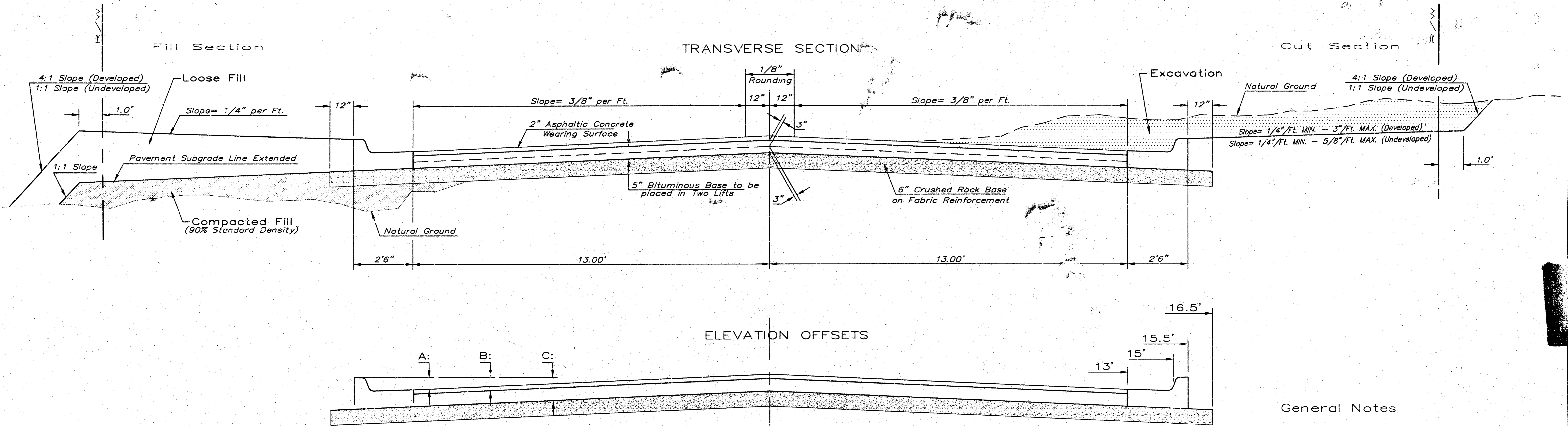
Scale 1" = 60'



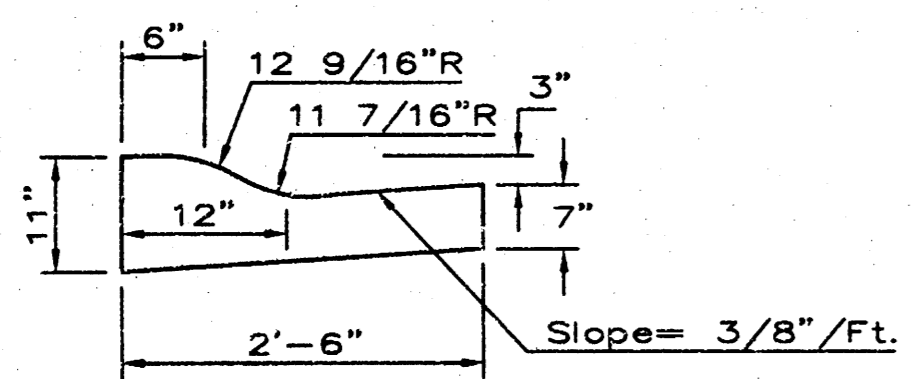
Ruggles & Bohm, P.A.  
Engineering, Surveying, Land Planning  
924 North Main  
Wichita, Kansas 67203  
www.rbkansas.com  
(316) 264-8008  
(316) 264-4621 fax  
E-mail: info@rbkansas.com

2294T

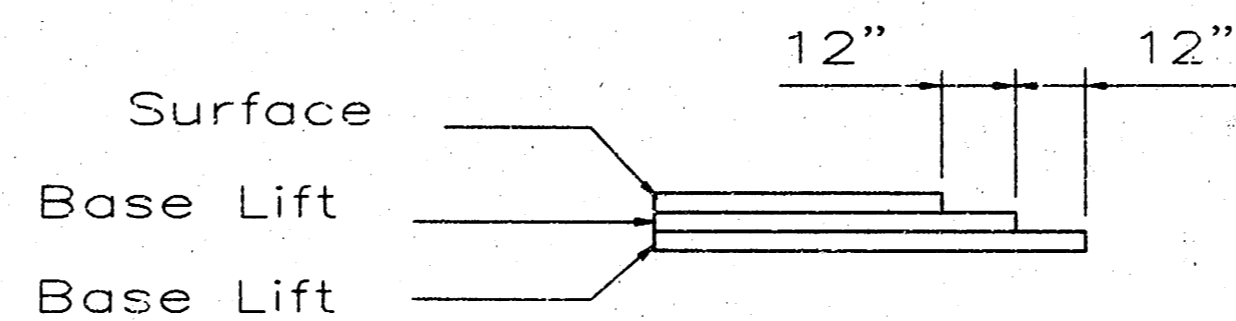
# TYPICAL 31' B-B PAVEMENT DETAILS



COMBINED CURB & GUTTER (6-5/8")



COMBINED ROLL TYPE CURB & GUTTER (3 3/8")



TRANSVERSE CONSTRUCTION JOINTS

Transverse construction joints shall be constructed in flexible base pavements at locations where pavement joints existing flexible base pavement as shown by the detail. All costs associated with the construction of the transverse joint shall be included in the bid price for Square Yards 7" ASPHALTIC CONCRETE (5" BITUMINOUS BASE).

	DISTANCE FROM CENTERLINE (L.T. & RT.)										
	0'	2'	4'	6'	7.5'	10'	12'	13'	15'	15.5'	16.5'
A: Top of Curbs to Top of Surface Lift	0.10	0.14	0.21	0.27	0.32	0.39	0.46	0.49	-	-	-
B: Top of Curbs to Top of Upper Base Lift	0.25	0.32	0.38	0.44	0.49	0.57	0.63	0.66	-	-	-
C: Top of Curbs to Top of Subgrade	0.67	0.73	0.79	0.86	0.90	0.98	1.04	1.08	1.13	1.17	1.20

### General Notes

THE ASPHALTIC CONCRETE PAVEMENT BETWEEN THE COMBINED CURB AND GUTTER SHALL BE PAID AS SQUARE YARDS OF 7" ASPHALTIC CONCRETE W/ (5" BITUMINOUS BASE.)

THE BITUMINOUS BASE UNDER AND BEHIND THE COMB. CURB AND GUTTER SHALL BE PAID AS SQUARE YARDS OF 2 1/2" BITUMINOUS BASE.

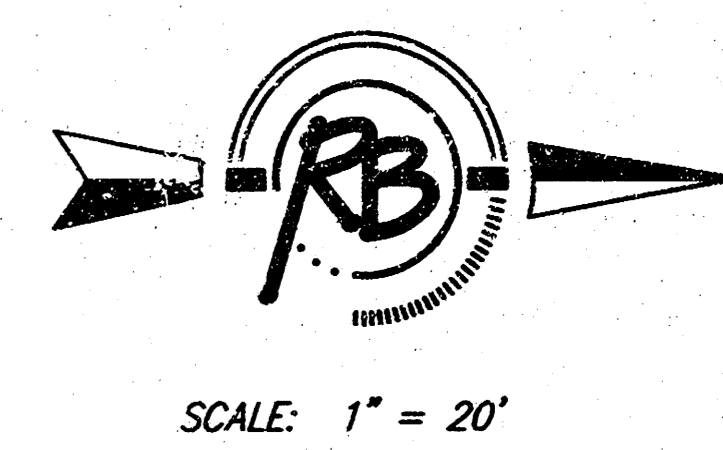
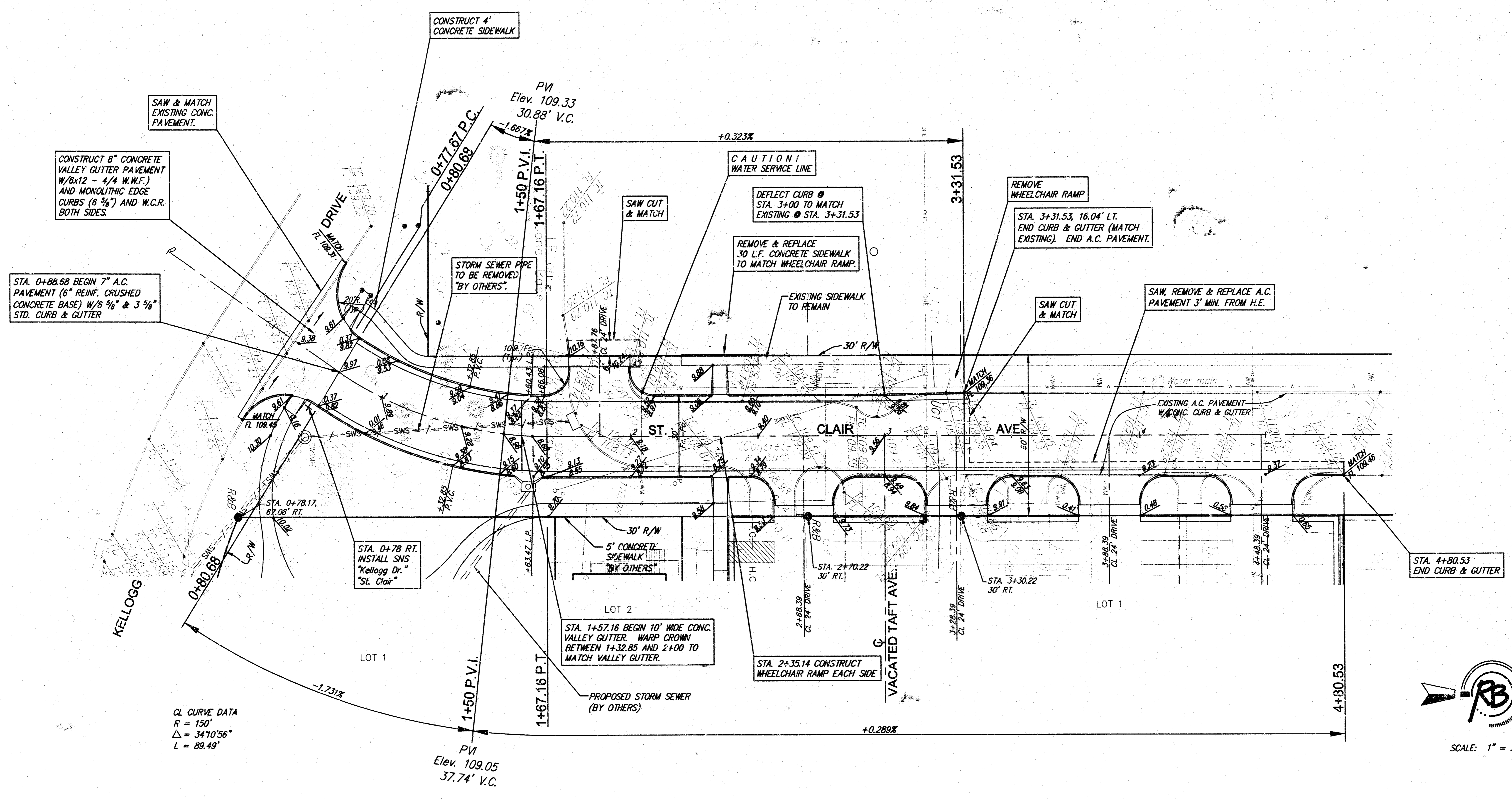
A TACK COAT OF EMULSIFIED ASPHALT (SC-1H OR CSS-1H) SHALL BE APPLIED AT AN APPROXIMATE RATE OF 0.05 GALLONS PER SQUARE YARD BETWEEN EACH LIFT OF ASPHALTIC MATERIAL.

BITUMINOUS BASE AND ASPHALTIC CONCRETE WEARING SURFACE SHALL BE PLACED WITH A LAYDOWN MACHINE HAVING AUTOMATIC CONTROLS FOR LINE AND GRADE.

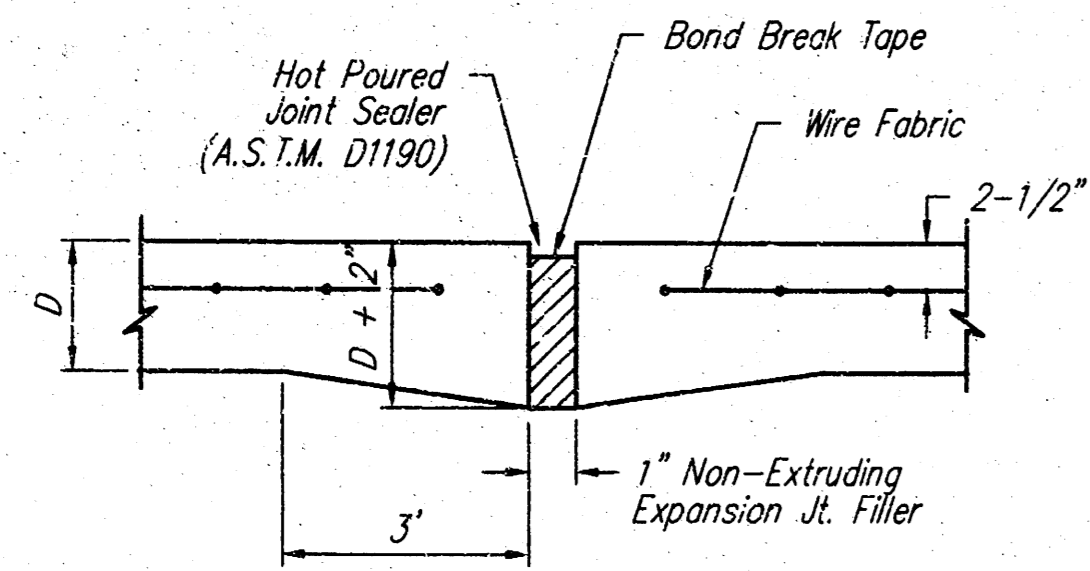
CONSTRUCTION JOINTS IN EACH LIFT SHALL BE STAGGERED A MINIMUM DISTANCE OF ONE (1) FOOT FROM JOINTS IN PRECEDING LIFTS AND PLACED SO THAT A JOINT WILL BE CONSTRUCTED ON THE CENTERLINE OF THE TOP LIFT.

CONTRACTOR TO BID ONLY ONE SUBGRADE TREATMENT ALTERNATE WHEN ALTERNATES ARE PROVIDED IN THE PROPOSAL AND CONTRACT. THE ALTERNATE CHOSEN BY THE SUCCESSFUL BIDDER SHALL BE USED IN CONSTRUCTING THIS PROJECT.

<p>THE CITY OF WICHITA CITY HALL - SEVENTH FLOOR 455 NORTH MAIN STREET WICHITA, KANSAS 67202 (316) 268-4001 (316) 268-4114 FAX</p>	<b>31' PAVEMENT 7" ASPHALTIC CONCRETE W/CRUSHED ROCK BASE</b>	
	M. E. LINDEBAK P.E. - CITY ENGINEER	
	PROJECT NUMBER 140 PPP	OCA # 607879
	DATE MAR 96	SHEET 2 OF 7

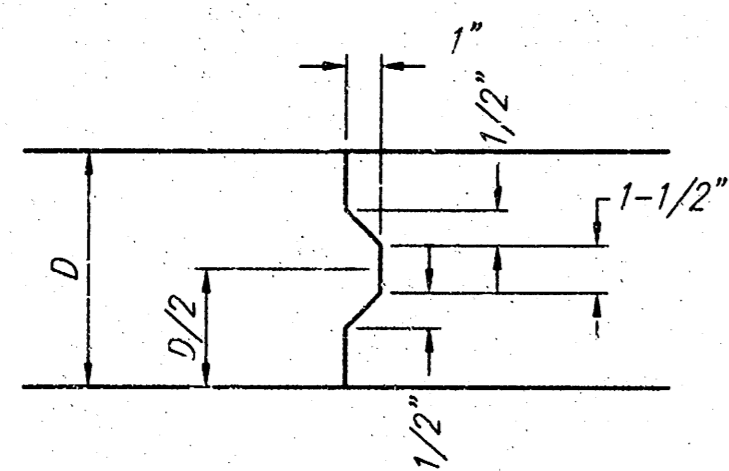


<b>FRIENDS UNIVERSITY 3RD ADDITION ST. CLAIR PAVING PLAN WICHITA, KANSAS</b>			
	<b>Ruggles &amp; Bohm, P.A.</b> Engineering, Surveying, Land Planning		DESIGN TCR
	924 North Main Wichita, Kansas 67203 www.rbkansas.com		(316) 264-8008 (316) 264-4621 fax E-mail: info@rbkansas.com
DRAWING FILE Boss [Pavement 01]	PROJECT NUMBER 140 PPP (607879)	DATE Mar. 31, 2003	SHEET 3 OF 7

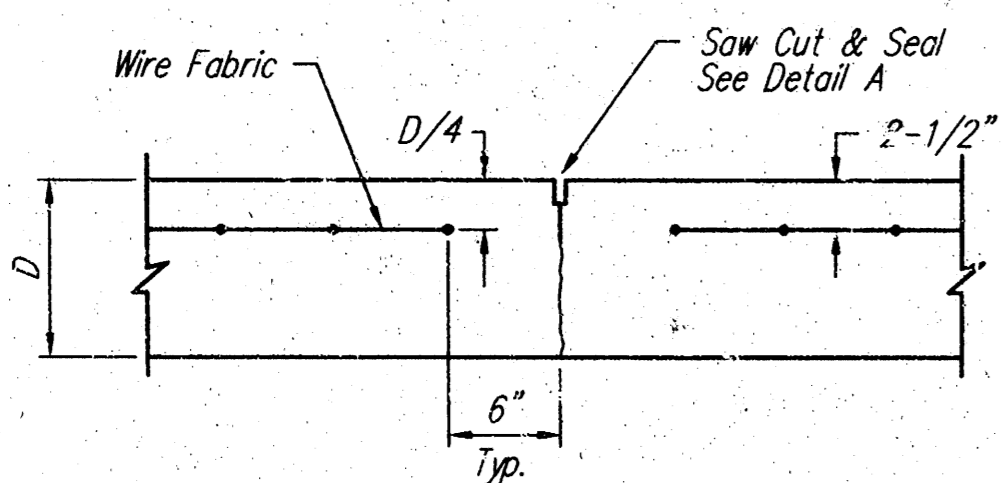


**EXPANSION JOINT**

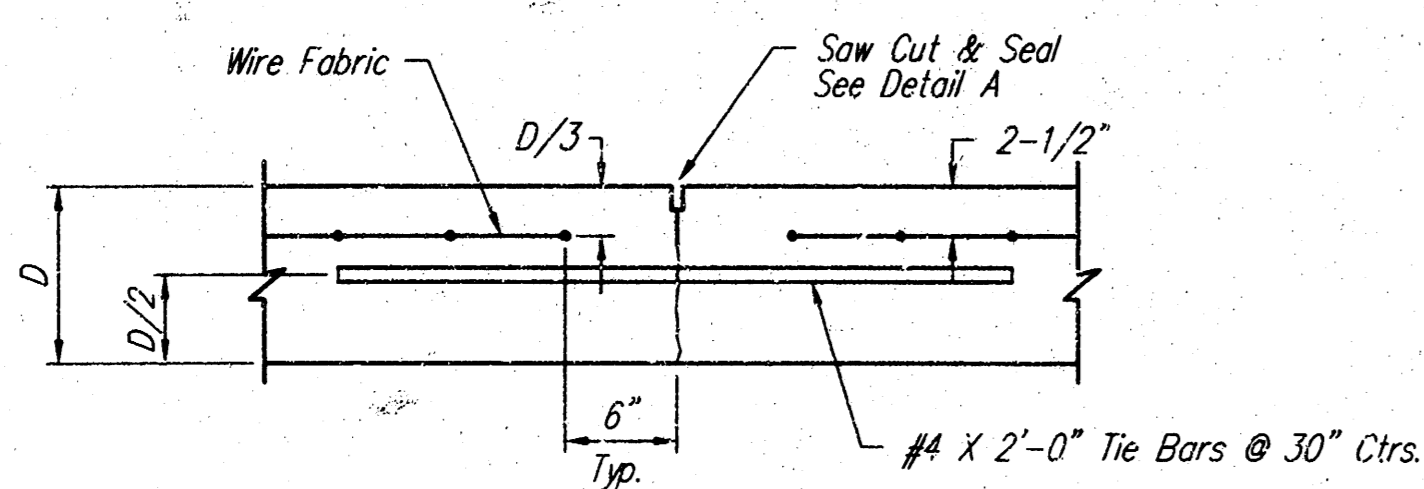
NOTE: Extra Thickness to be Subsidiary to Price of Square Yards Pavement



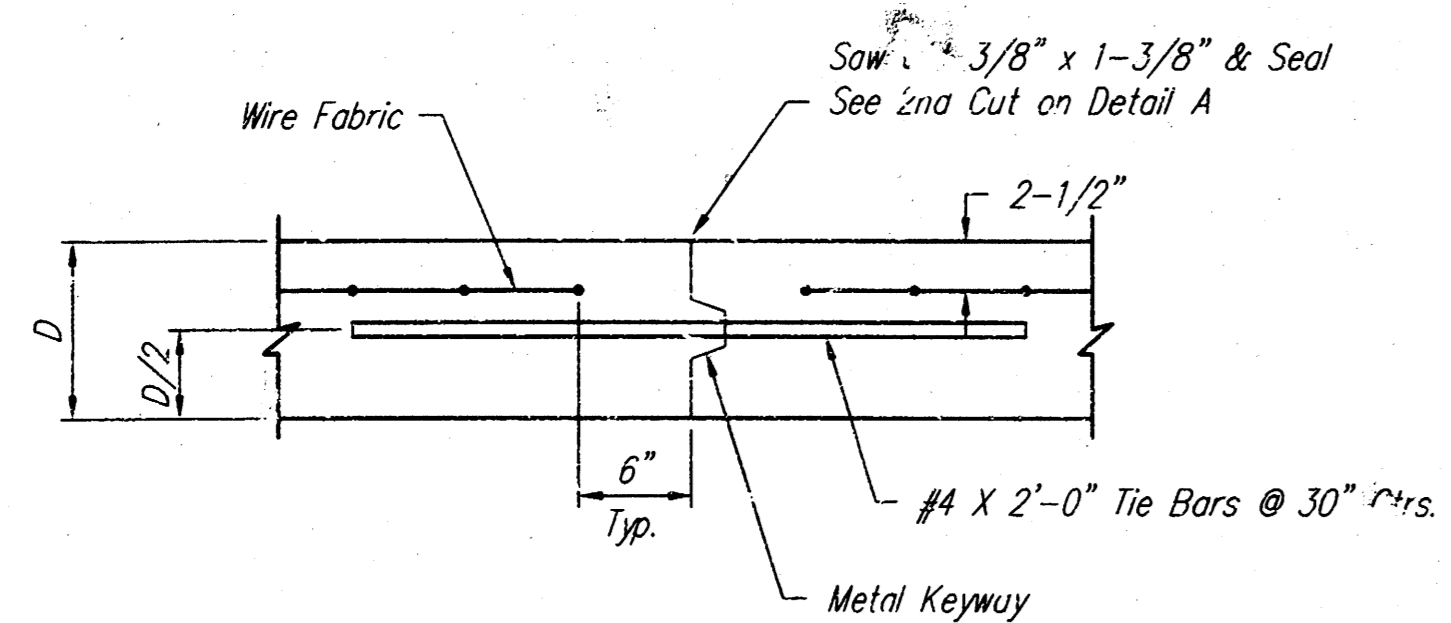
**KEYWAY DETAIL**



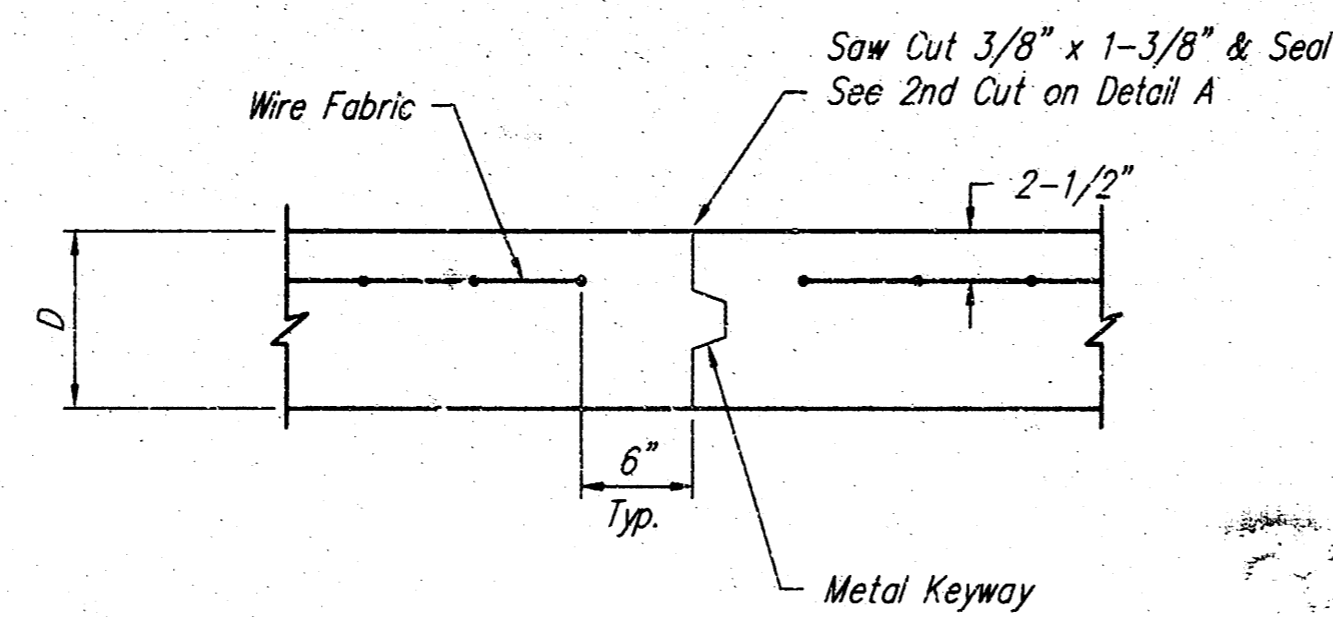
**CONTRACTION JOINT DETAIL (C.J.)**



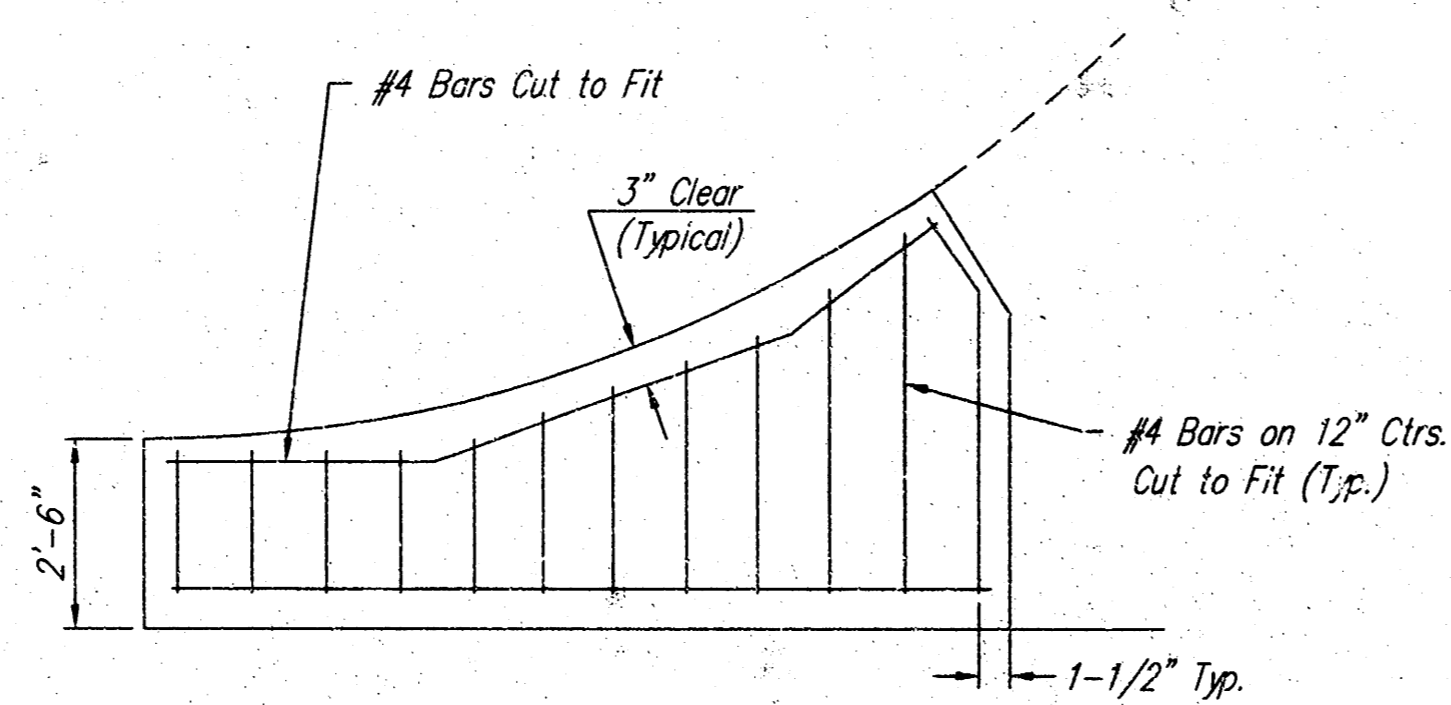
**LONGITUDINAL JOINT DETAIL (L.J.)**



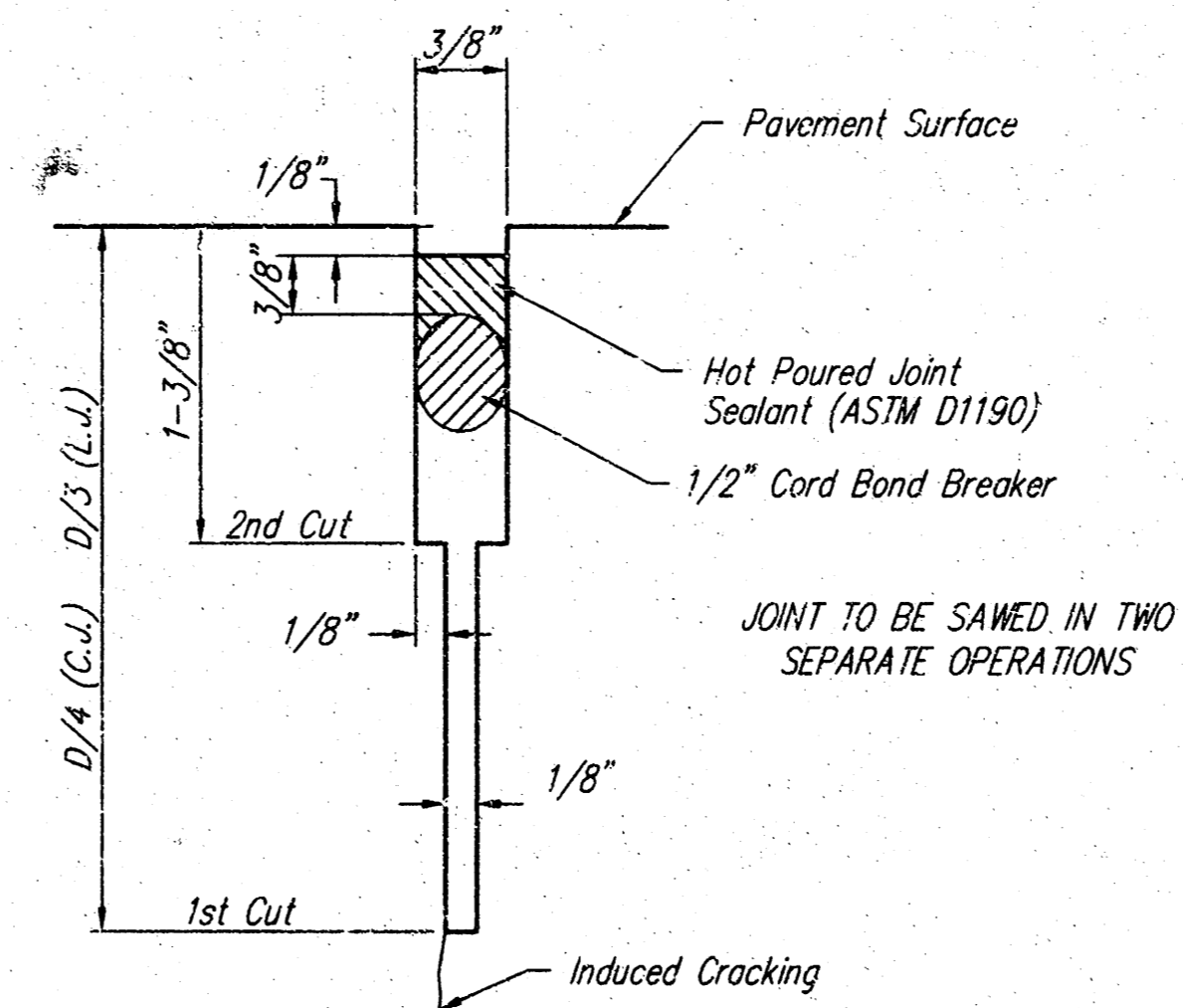
**OPTIONAL LONGITUDINAL JOINT DETAIL (L.J.)**



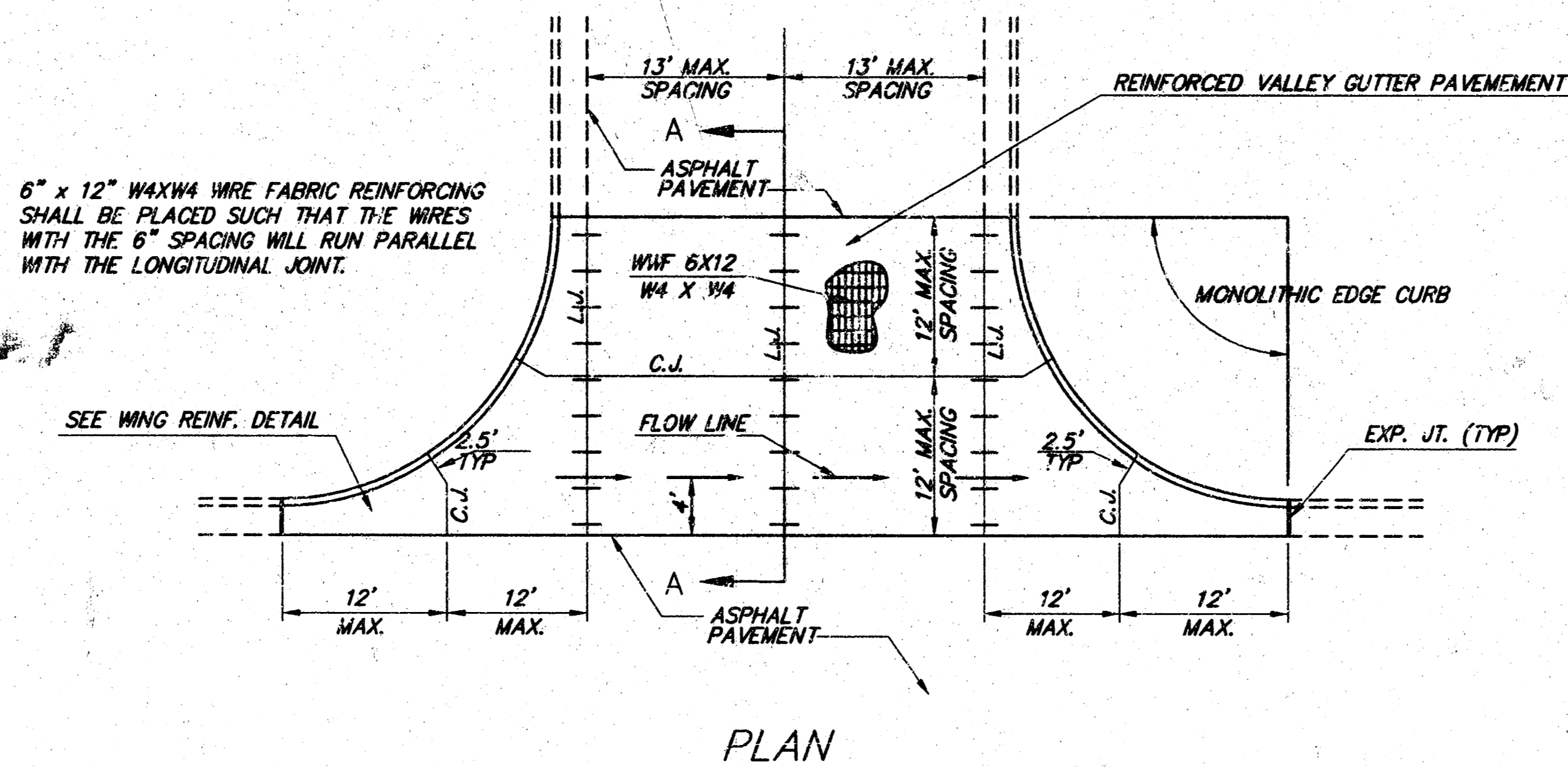
**OPTIONAL CONTRACTION JOINT**



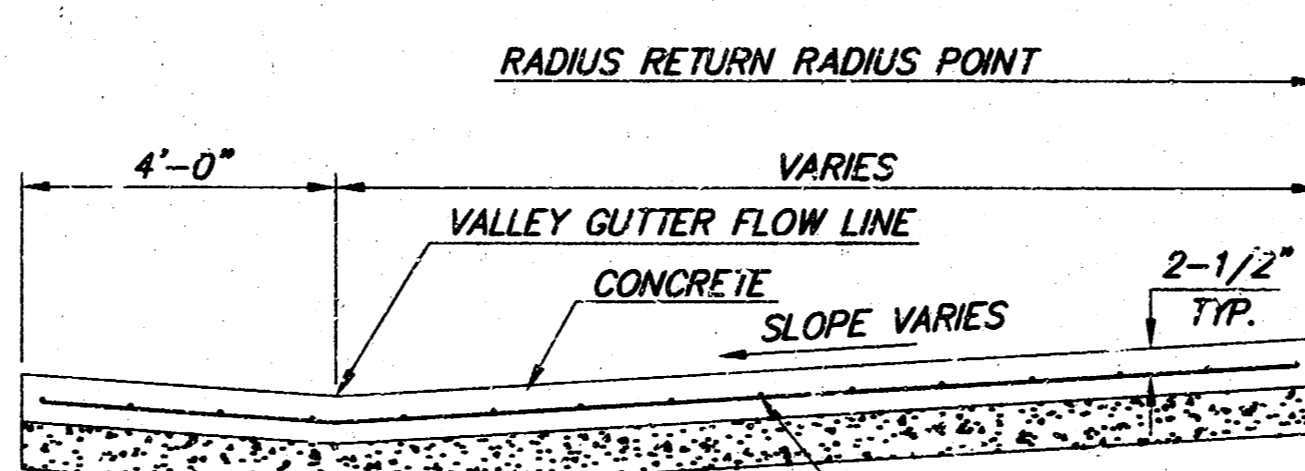
**WING REINFORCING DETAIL**



**SAW JOINT DETAIL**

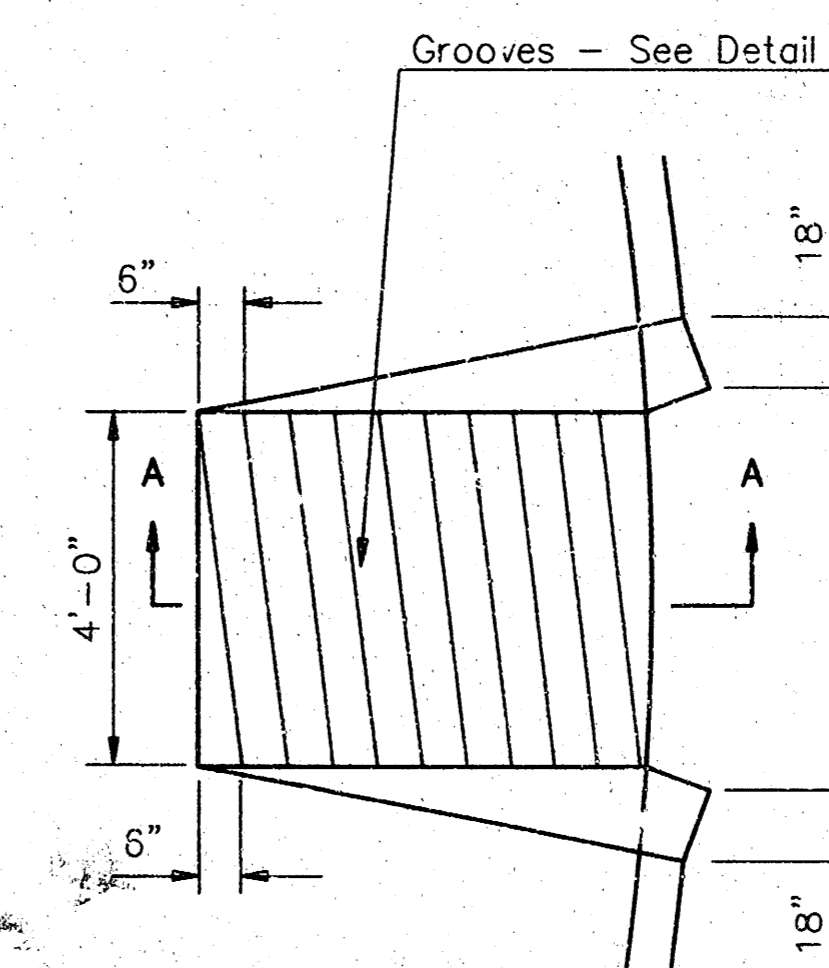


**PLAN**

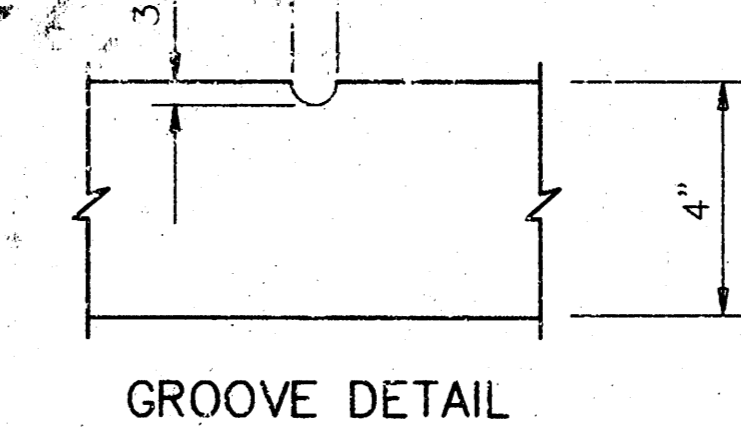


**SECTION A-A**

**REINFORCED VALLEY GUTTER DETAIL**

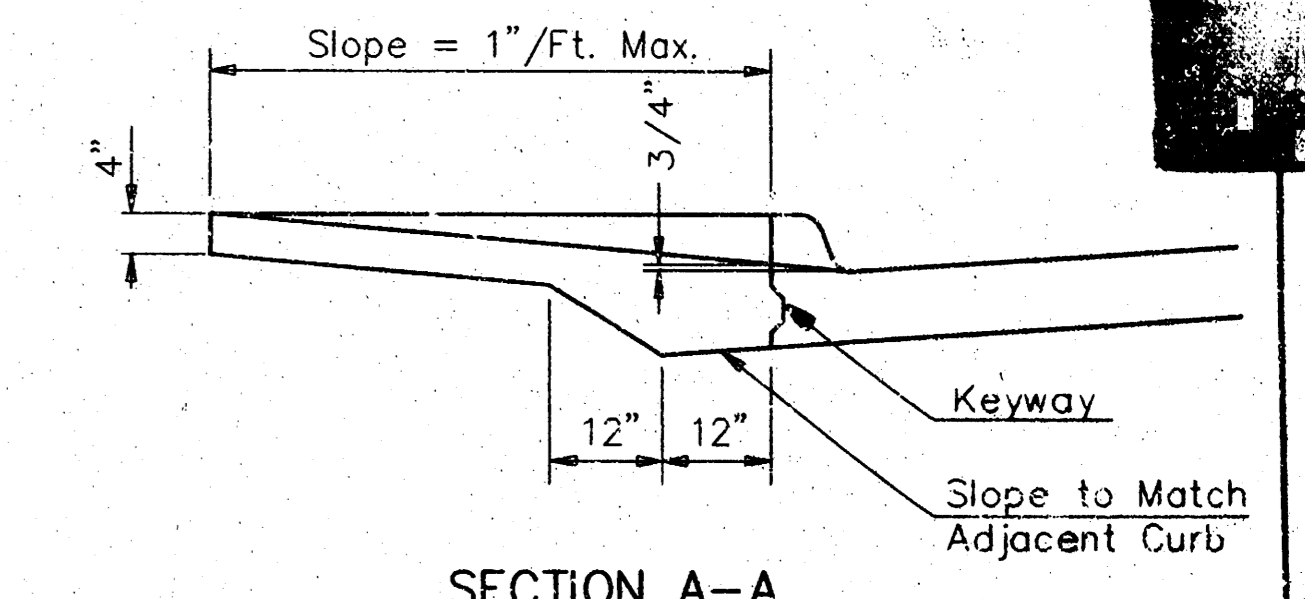


**WHEELCHAIR RAMP PLAN VIEW**

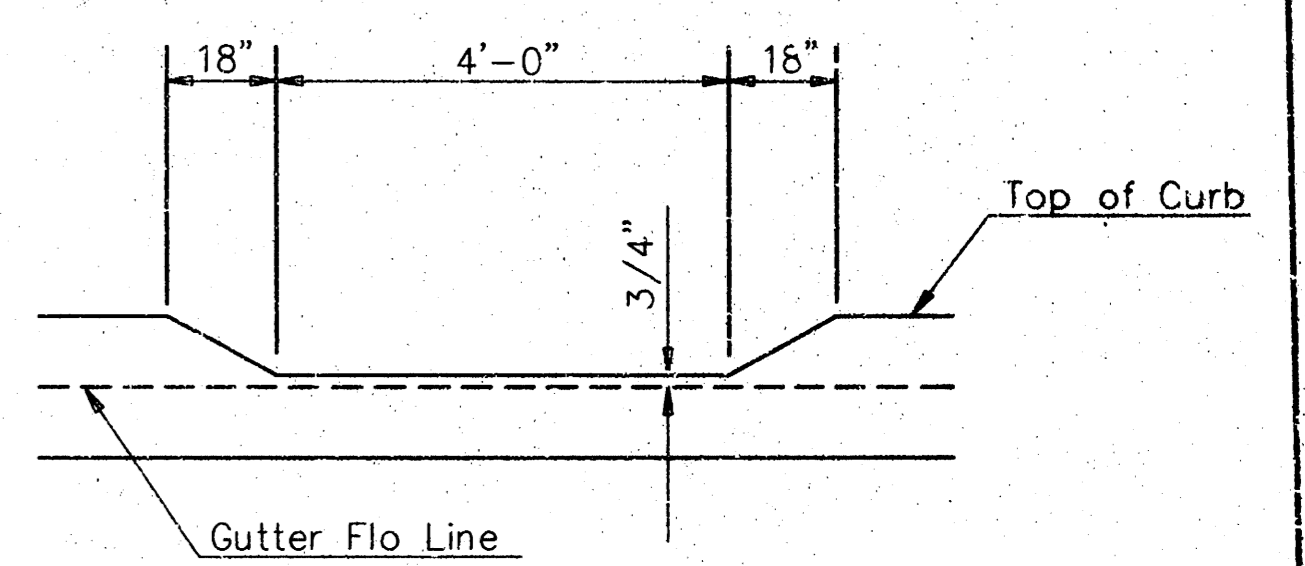


**GROOVE DETAIL**

**WHEELCHAIR RAMP DETAIL**

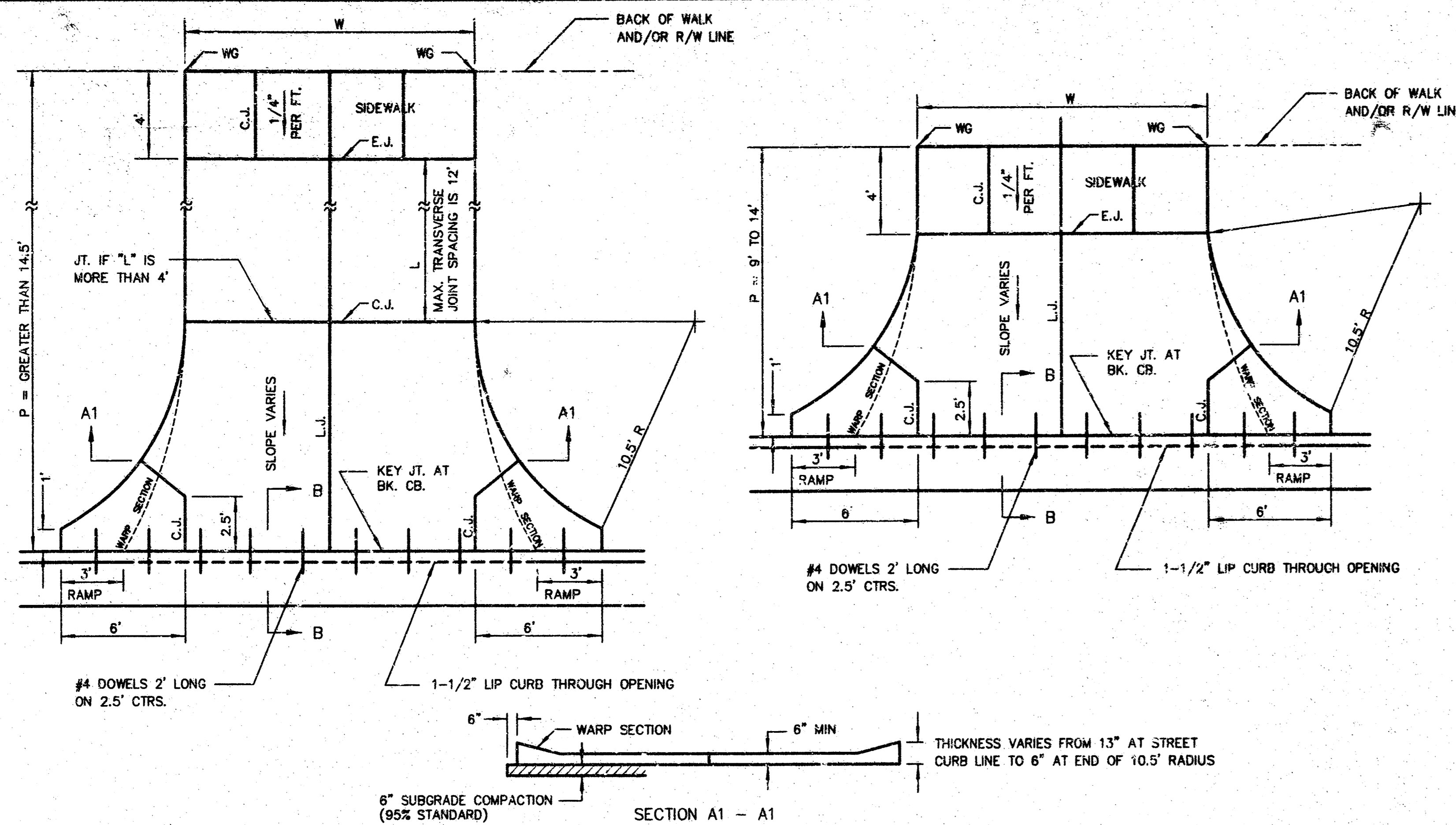


**SECTION A-A**



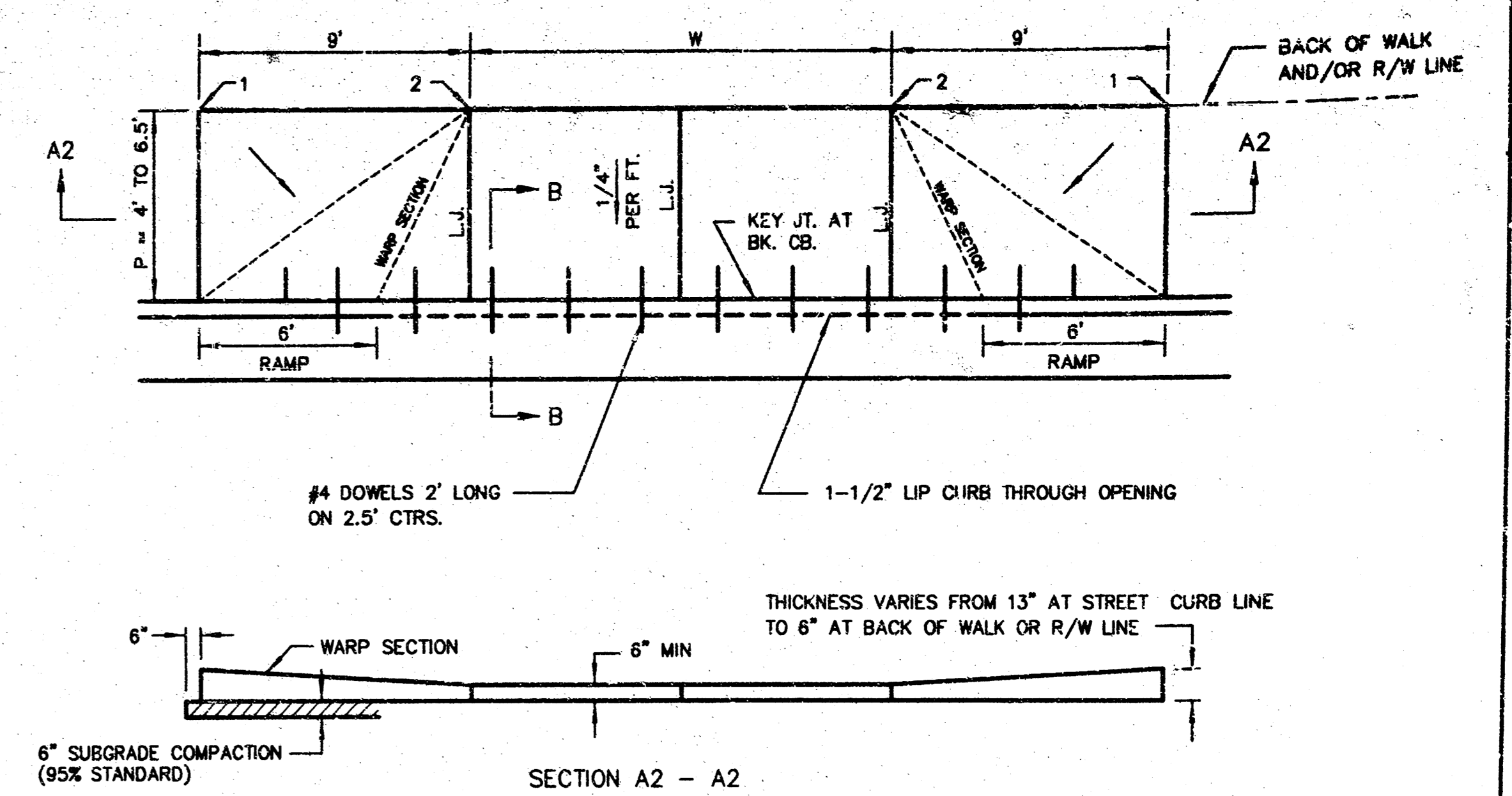
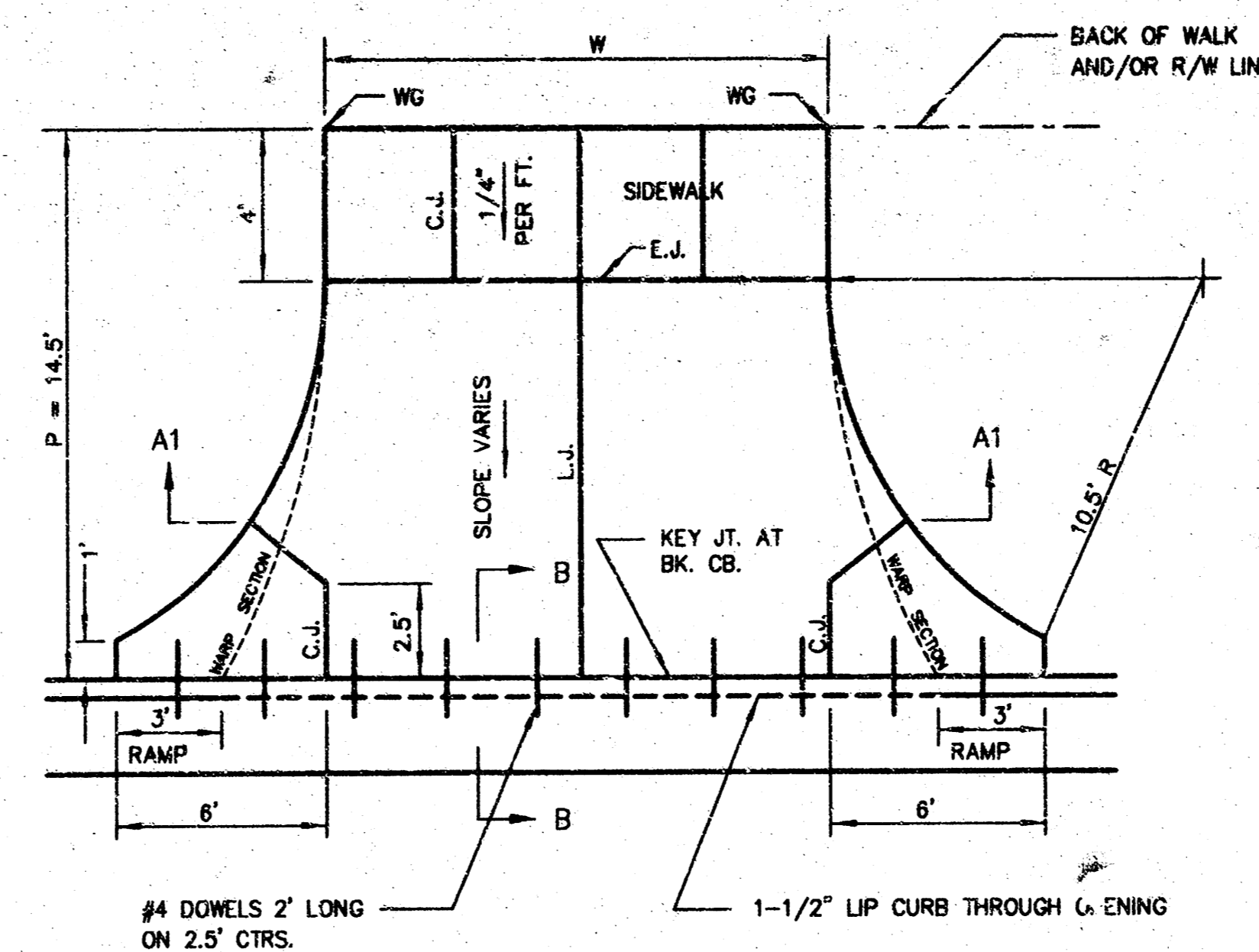
**DEPRESSED CURB DETAIL**

<p>THE CITY OF WICHITA</p> <p>CITY ENGINEER'S OFFICE CITY HALL - SEVENTH FLOOR 405 NORTH MAIN STREET WICHITA, KANSAS 67202 (316) 268-5001 (316) 268-4114 FAX</p>	<b>VALLEY GUTTER DETAILS</b>	
	<b>WHEELCHAIR RAMP DETAILS</b>	
	M. E. LINDEBAK P.E. - CITY ENGINEER.	
	PROJECT NUMBER 140 PPP	OCA # 607879
DATE MAR 96	SHEET 4 OF 7	



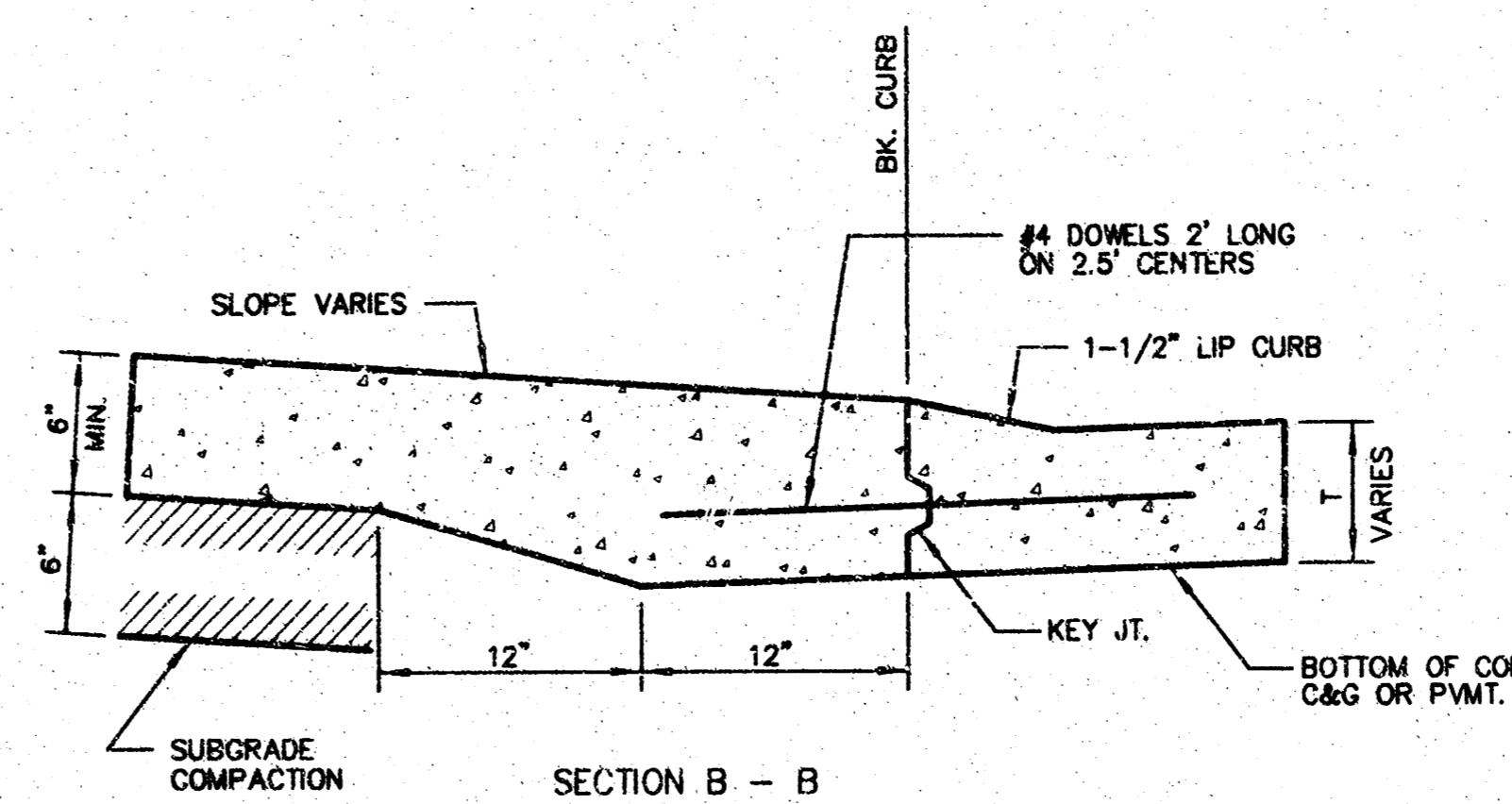
PARKING WIDTH "P"	9'	10'	11'	12'	13'	14.5'	20'	25'	30'	35'	40'	45'	50'
ABSOLUTE MAX. DIST. OF PT. "WG" ABOVE OR BELOW TOP OF FULL CURB	0.27'	0.27'	0.32'	0.37'	0.52'	0.80'	1.35'	1.85'	2.35'	2.85'	3.35'	3.85'	4.35'
OPTIMUM MAX. DIST. OF PT. "WG" ABOVE OR BELOW TOP OF FULL CURB	0.27'	0.27'	0.32'	0.37'	0.52'	0.62'	0.96'	1.22'	1.48'	1.74'	2.00'	2.26'	2.52'
OPTIMUM MIN. DIST. OF PT. "WG" ABOVE OR BELOW TOP OF FULL CURB	0.19'	0.21'	0.23'	0.25'	0.30'	0.30'	0.42'	0.52'	0.62'	0.72'	0.82'	0.92'	1.02'
ABSOLUTE MIN. DIST. OF PT. "WG" ABOVE OR BELOW TOP OF FULL CURB	-0.19'	-0.16'	-0.13'	-0.10'	-0.06'	0.00'	0.00'	0.15'	0.25'	0.35'	0.45'	0.55'	0.65'

RADIUS RAMP DRIVES (P = 9.0' & GREATER)

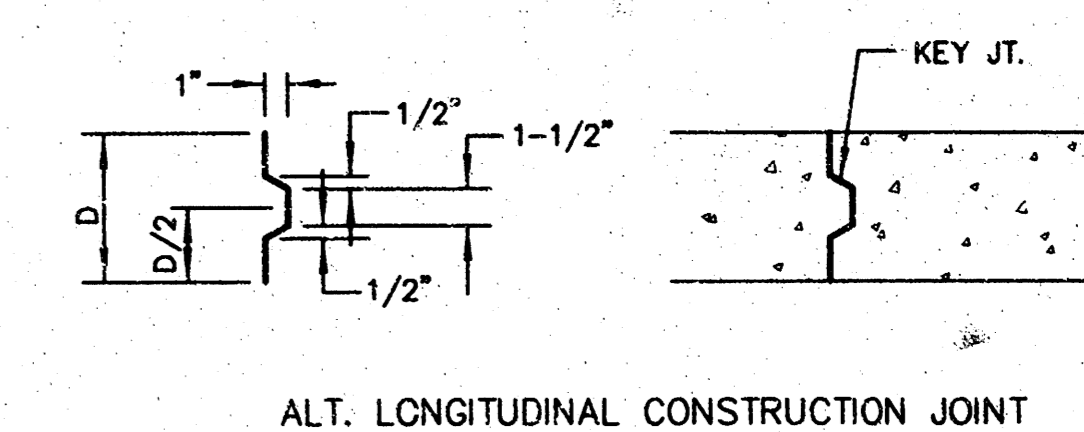


PARKING WIDTH "P"	4'	4.5'	5'	5.5'	6'	6.5'
DIST. OF PT. "1" ABOVE TOP OF FULL CURB	-0.08'	0.02'	0.18'	0.22'	0.18'	0.22'
DIST. OF PT. "2" BELOW TOP OF FULL CURB	-0.08'	0.02'	0.18'	0.22'	0.18'	0.22'

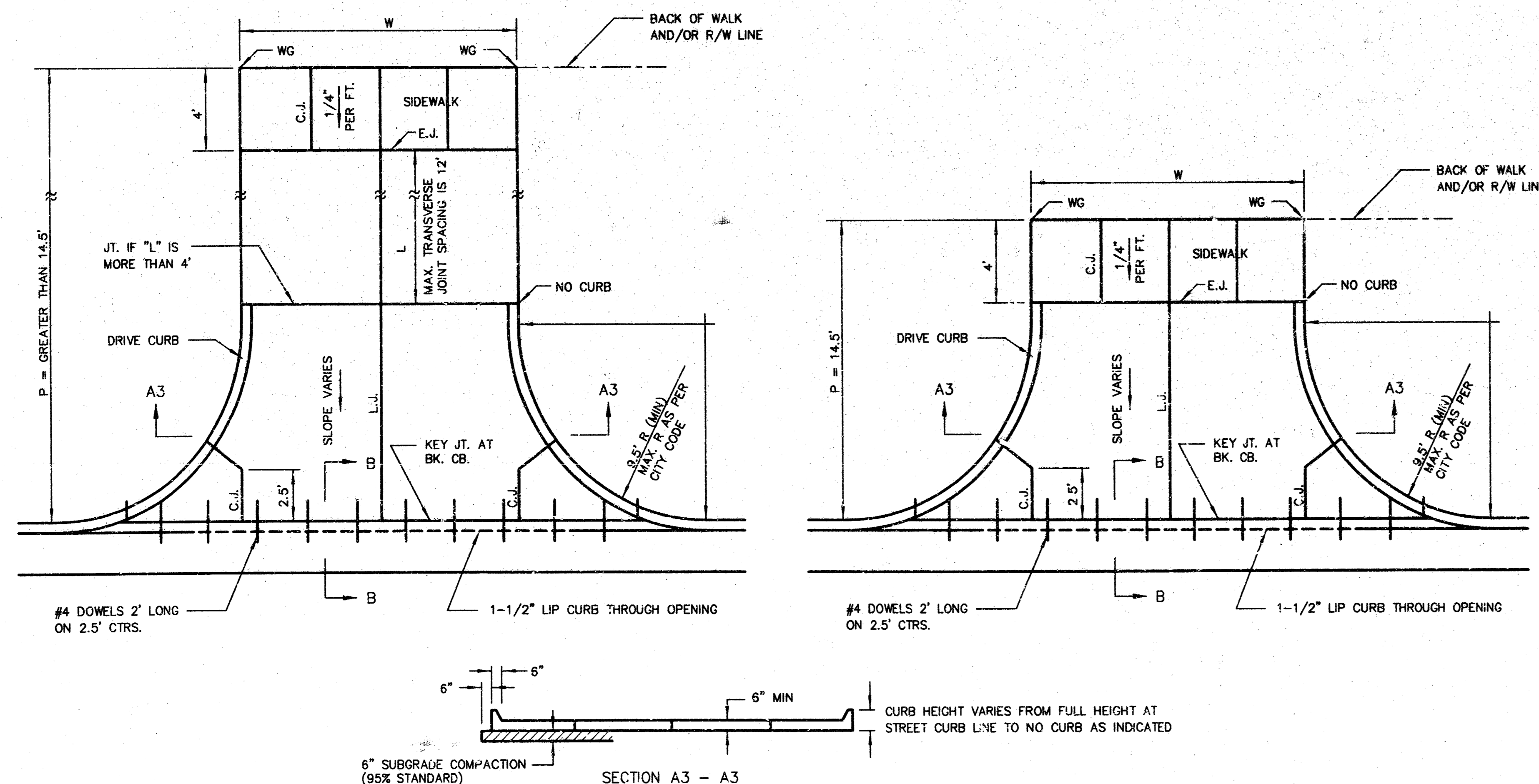
FULL RAMP DRIVE (P = 4.0' TO 6.5')



BACK OF CURB DETAIL

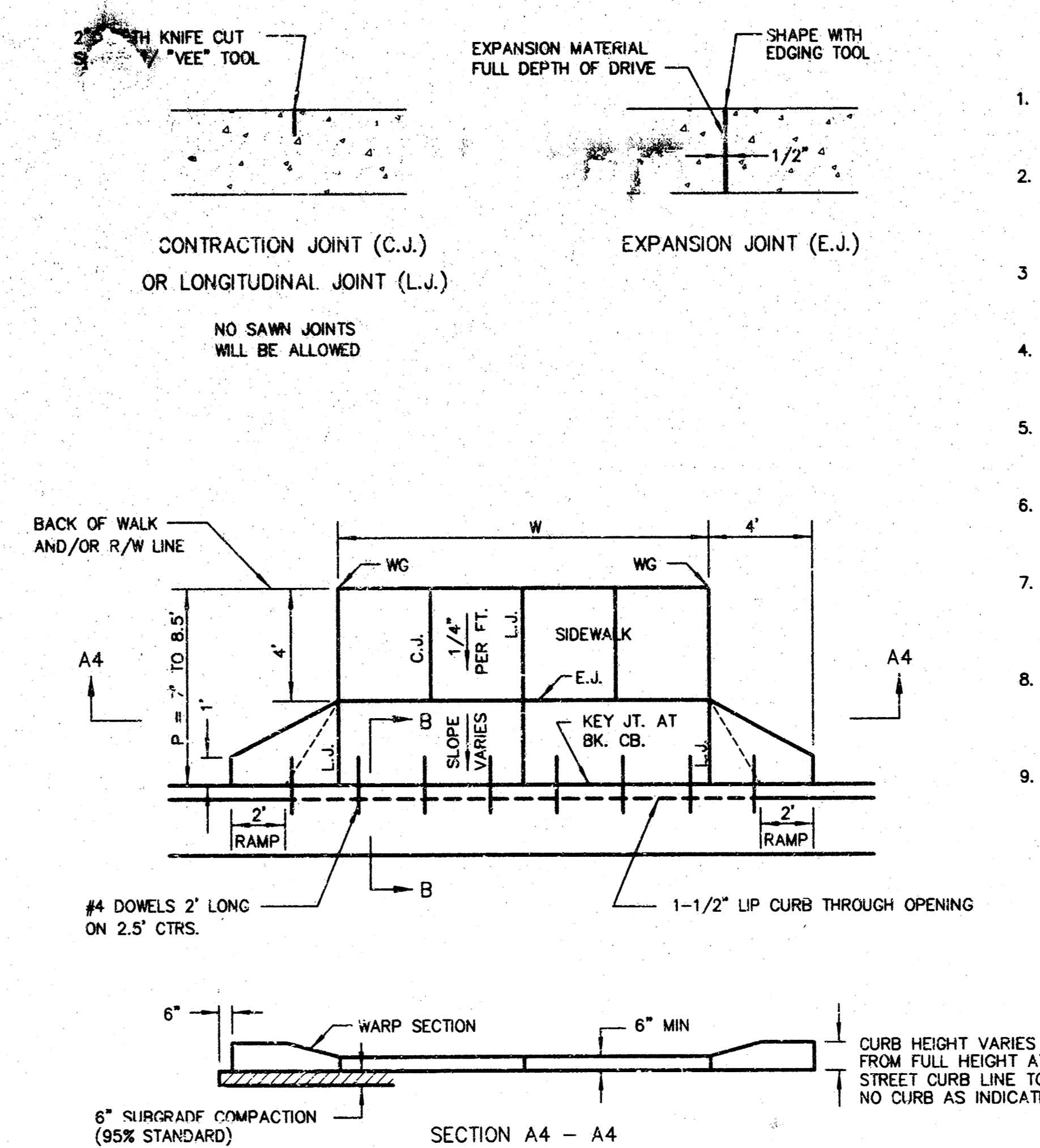


ALT. LONGITUDINAL CONSTRUCTION JOINT



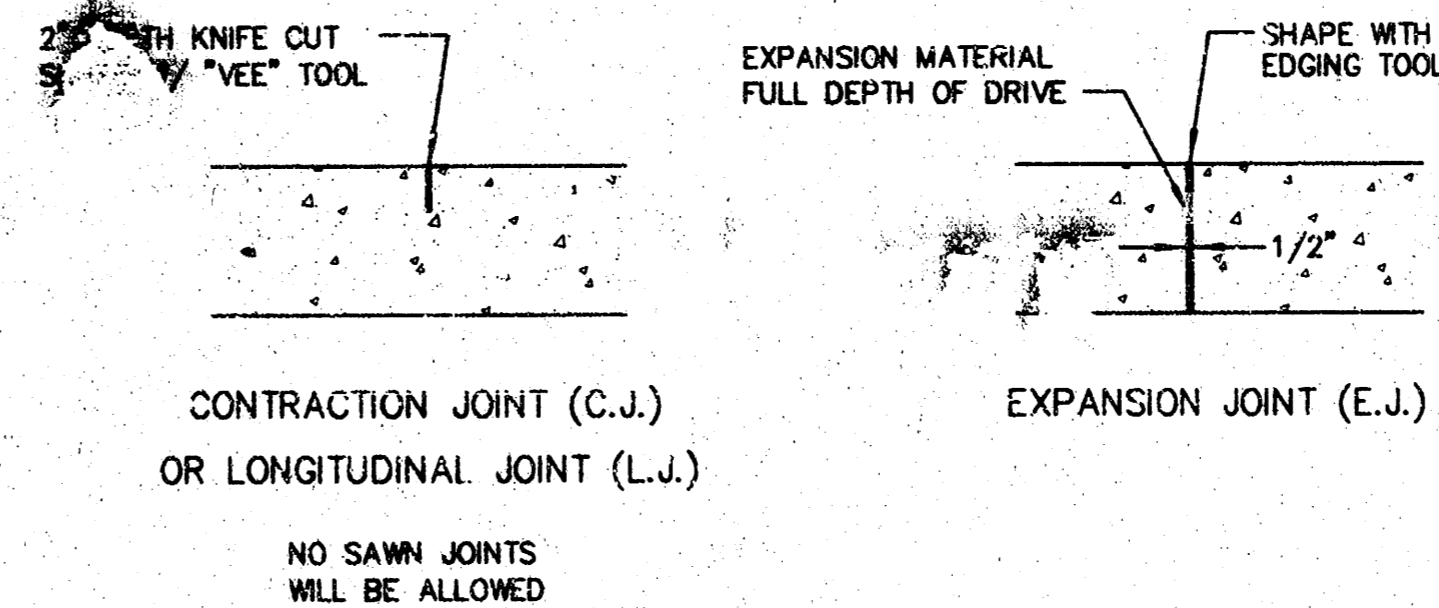
PARKING WIDTH "P"	14.5'	20'	25'	30'	35'	40'	45'	50'
ABSOLUTE MAX. DIST. OF PT. "WG" ABOVE OR BELOW TOP OF FULL CURB	0.72'	1.27'	1.77'	2.27'	2.77'	3.27'	3.77'	4.27'
OPTIMUM MAX. DIST. OF PT. "WG" ABOVE OR BELOW TOP OF FULL CURB	0.70'	1.04'	1.30'	1.56'	1.82'	2.08'	2.34'	2.60'
OPTIMUM MIN. DIST. OF PT. "WG" ABOVE OR BELOW TOP OF FULL CURB	0.30'	0.42'	0.52'	0.62'	0.72'	0.82'	0.92'	1.02'
ABSOLUTE MIN. DIST. OF PT. "WG" ABOVE OR BELOW TOP OF FULL CURB	0.00'	0.00'	0.15'	0.25'	0.35'	0.45'	0.55'	0.65'

FULL RADIUS DRIVES (P = 14.5' & GREATER)



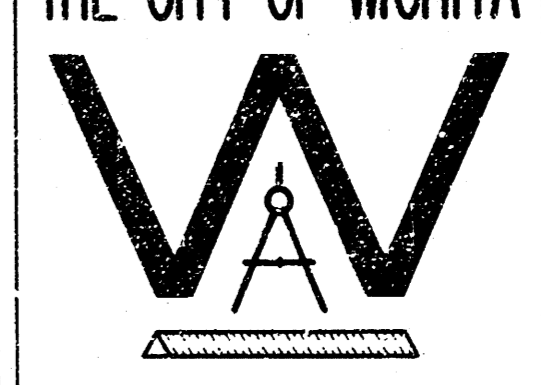
PARKING WIDTH "P"	7'	7.5'	8'	8.5'
ABSOLUTE MAX. DIST. OF PT. "WG" ABOVE OR BELOW TOP OF FULL CURB	-0.08'	0.02'	0.18'	0.22'
OPTIMUM MAX. DIST. OF PT. "WG" ABOVE OR BELOW TOP OF FULL CURB	-0.08'	0.02'	0.18'	0.22'
OPTIMUM MIN. DIST. OF PT. "WG" ABOVE OR BELOW TOP OF FULL CURB	-0.15'	-0.16'	-0.17'	-0.17'
ABSOLUTE MIN. DIST. OF PT. "WG" ABOVE OR BELOW TOP OF FULL CURB	-0.25'	-0.20'	-0.20'	-0.20'

FULL RAMP DRIVE (P = 7.0' TO 8.5')



GENERAL NOTES

- DRIVEWAY CONSTRUCTION DETAILED ON THIS SHEET IS FOR USE WITH FULL HEIGHT STREET CURBS AND IN AREAS WITHOUT FULL WALK CONSTRUCTION IN THE PARKING. SEE OTHER DETAIL SHEETS FOR DRIVEWAY CONSTRUCTION WITH ROLL CURB AND/OR FULL WALK.
- ONE LONGITUDINAL JOINT SHALL BE CONSTRUCTED ALONG THE CENTERLINE OF DRIVES HAVING A "W" DIMENSION OF 24' OR LESS. TWO LONGITUDINAL JOINTS SHALL BE CONSTRUCTED WITH EQUAL SPACINGS NOT TO EXCEED 10' FOR DRIVES WITH A "W" DIMENSION GREATER THAN 24'.
- DRIVEWAY WIDTH DENOTED AS "W" ON THE DETAIL DRAWINGS SHALL BE A MINIMUM OF 10' AND A MAXIMUM OF 30'. THE MAXIMUM OPENING FOR RADIUS TYPE DRIVES WITH CURBS THROUGH THE RADIUS SHALL NOT EXCEED 52' AT THE STREET CURB LINE.
- CONTRACTION JOINT SPACING IN THE DRIVEWAY WALK SECTION SHALL BE A MINIMUM OF 3' AND A MAXIMUM OF 8'. JOINTS ARE TO BE EQUALLY SPACED WITHIN THIS RANGE. WALK SECTION SHALL BE CONSTRUCTED TO THE SAME THICKNESS AS THE DRIVEWAY.
- DOWEL BARS SHALL BE OMITTED FROM THE KEYED CONSTRUCTION JOINT ALONG THE BACK OF THE STREET CURB LINE WHEN DRIVEWAYS ARE CONSTRUCTED IN CONJUNCTION WITH NEW CONCRETE PAVEMENT CONSTRUCTION.
- ADDITIONAL THICKNESS OF DRIVE AS INDICATED IN THE DRAWINGS WILL NOT BE PAID FOR DIRECTLY AND THIS COST SHALL BE INCLUDED IN THE UNIT PRICE BID FOR THE DRIVEWAY CONSTRUCTION.
- ONE HALF INCH EXPANSION JOINTS SHALL BE INSTALLED WHEREVER DRIVE CONSTRUCTION ABUTS SIDEWALK. ONE HALF INCH EXPANSION JOINTS SHALL ALSO BE INSTALLED ALONG THE PROPERTY LINE AND/OR BACK OF WALK LINE WHEN DRIVE CONSTRUCTION ALONG THIS LINE ABUTS CONCRETE PARKING LOTS OR CONCRETE DRIVE EXTENSION.
- ALL DRIVEWAYS SHALL BE A MINIMUM OF 6" IN THICKNESS AND SHALL BE WITHOUT REINFORCEMENT. DRIVEWAYS MAY BE CONSTRUCTED THICKER THAN 6" AND MAY BE REINFORCED WITH 6"x12" #4-W4 WELDED WIRE FABRIC WHEN PROPERLY AUTHORIZED BY THE PROPERTY OWNER WITH THE ENGINEER'S CONCURRENCE.
- OPTIMUM DRIVEWAY ELEVATIONS SHOWN IN THE TABLES ARE TO BE USED WHEREVER POSSIBLE. ABSOLUTE MAXIMUM AND MINIMUM ELEVATIONS ARE TO BE USED ONLY WHEN THESE VALUES WILL PERMIT NEW CONSTRUCTION TO MATCH EXISTING DRIVES OR PARKING LOTS. VALUES SHOWN IN THE TABLES ARE BASED ON A FULL CURB HEIGHT ELEVATION OF 0.55' ABOVE THE CUTTER FLOW LINE AND MUST BE ADJUSTED ACCORDINGLY FOR OTHER CURB HEIGHTS. VALUES SHOWN IN THE TABLES WITH MINUS SIGNS INDICATE ELEVATIONS BELOW TOP OF FULL HEIGHT CURB.



THE CITY OF WICHITA  
CITY ENGINEER'S OFFICE  
CITY HALL - SEVENTH FLOOR  
455 NORTH MAIN STREET  
WICHITA, KANSAS 67202  
(316) 268-2501  
(316) 268-4114 FAX

**STANDARD DRIVE ENTRANCES  
FULL HEIGHT CURB**

M. E. LINDEBAK P.E. - CITY ENGINEER

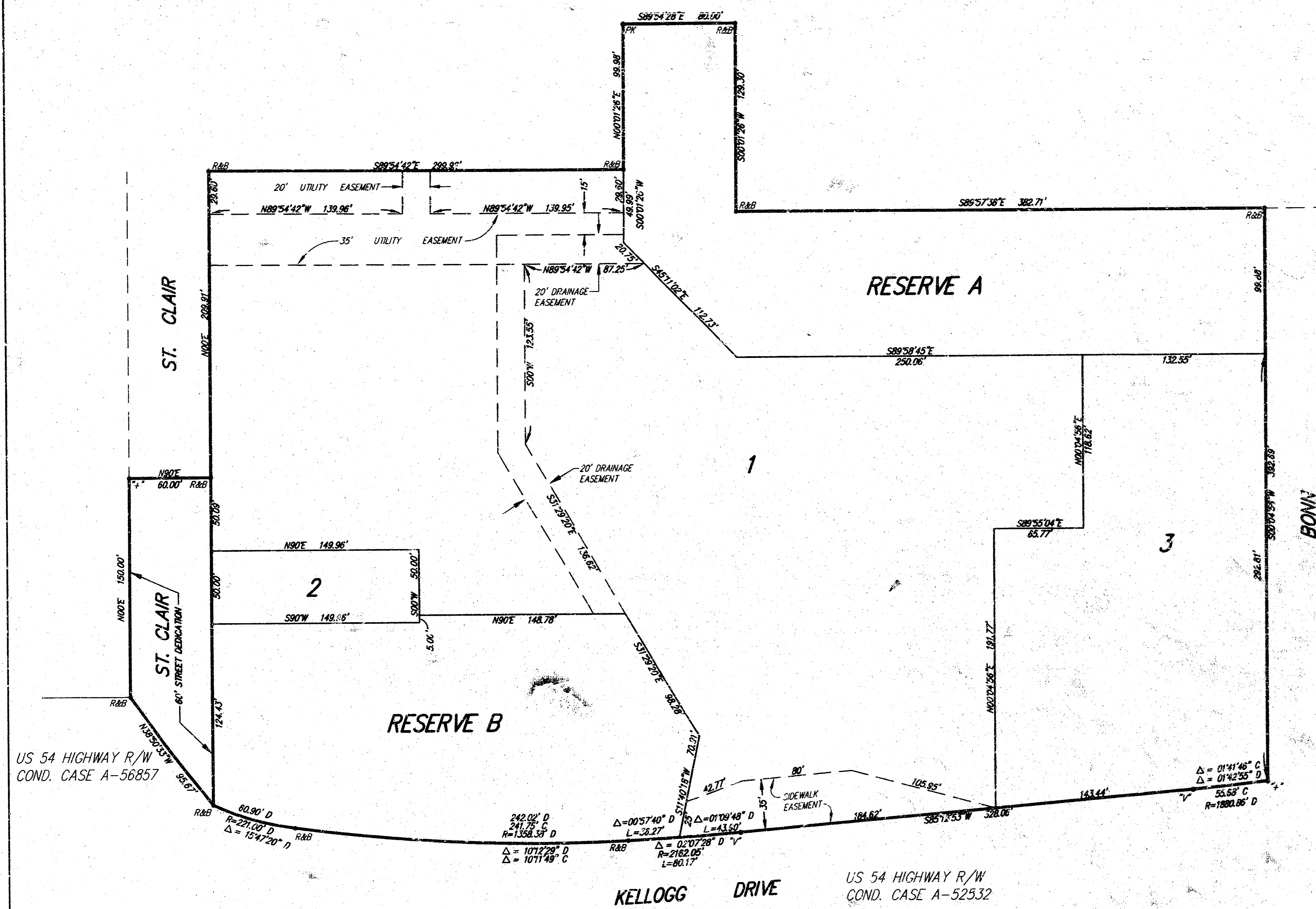
PROJECT NUMBER: 140 PPP  
DATE: MAR 96

DCA #: 607879  
SHEET 5 OF 7



# FRIENDS UNIVERSITY 3RD ADDITION

## Wichita, Sedgwick County, Kansas



State of Kansas)  
Sedgwick County) SS

We, Ruggles & Bohm, P.A., Land Surveyors in aforesaid county and state, do hereby certify that, under the supervision of the undersigned, we have surveyed and platted "FRIENDS UNIVERSITY 3RD ADDITION", Sedgwick County, Kansas, and that the accompanying plat is a true and correct exhibit of the property surveyed, described as and being a replat of odd-numbered Lots 79 through 109 on St. Clair Avenue, even-numbered Lots 80 through 112 on Everett Avenue, odd-numbered Lots 101 through 111 on University Avenue, odd-numbered Lots 143 through 171 on Shirley (now University) Avenue, and even-numbered Lots 102 through 112 on Bonn Street; TOGETHER WITH all of vacated St. Clair Avenue right-of-way lying south of Burgess (now Taft) Avenue, all of Shirley (now University) Avenue right-of-way lying west of the west line of Bonn Avenue, all of Burgess (now Taft) Avenue right-of-way lying east of the east line of St. Clair Avenue, and all of Everett Avenue right-of-way, all as platted in University Place Addition to Wichita, Sedgwick County, Kansas; EXCEPT those parts lying south of the north line of highway right-of-way condemned in Cases A-52532 and A56857.

All public easements and dedications being vacated by virtue of K.S.A. 12-512(b).

\_\_\_\_\_  
Thomas C. Ruggles  
Land Surveyor

Know all men by these presents that we, the undersigned, have caused the land described in the surveyor's certificate to be platted into Lots, a Street and Reserves, to be known as "FRIENDS UNIVERSITY 3RD ADDITION", Wichita, Sedgwick County, Kansas. The Street is hereby dedicated to and for the use of the public. The sidewalk easement is hereby granted for construction and maintenance of public sidewalks. The utility easements are hereby granted as indicated for the construction and maintenance of all public utilities. The drainage easement is hereby granted as indicated for the construction and maintenance of a storm sewer system. A drainage plan for the plat is on file in the office of the City Engineer. All drainage easements and reserves shall remain at established grades, or as modified with the approval of the City Engineer, and unobstructed to allow for the conveyance of storm water. Reserve "A" is to be owned and maintained by the owners of adjacent lots, and is to be used for open space, pedestrian ways, emergency access, drainage, and as a utility easement. Reserve "B" is to be owned and maintained by the owners of Lot 1, and is to be used for open space, drainage, gazebo, fountains, lighting, public sidewalk, and private sanitary sewer.

\_\_\_\_\_  
Randall C. Doerksen, Vice President

State of Kansas)  
Sedgwick County) SS

The foregoing instrument acknowledged before me, this \_\_\_\_\_ day of \_\_\_\_\_, 2003, by Randall C. Doerksen, Vice President, on behalf of the Corporation.

\_\_\_\_\_  
Mildred E. Franz  
Notary Public

My appointment expires \_\_\_\_\_

This plat of "FRIENDS UNIVERSITY 3RD ADDITION", Wichita, Sedgwick County, Kansas, has been submitted to and approved by the Wichita-Sedgwick County Metropolitan Area Planning Commission, Wichita, Kansas. Dated this \_\_\_\_\_ day of \_\_\_\_\_, 2003.

\_\_\_\_\_  
Bernard A. Hentzen  
Chairman

\_\_\_\_\_  
Dale Miller  
Secretary

This plat approved and all dedications shown hereon accepted by the City Council of the City of Wichita, Kansas, this \_\_\_\_\_ day of \_\_\_\_\_, 2003.

At the direction of the City Council

\_\_\_\_\_  
Chris Cherches  
City Manager

\_\_\_\_\_  
Pat Graves  
City Clerk

Reviewed in accordance with K.S.A. 58-2005 on this \_\_\_\_\_ day of \_\_\_\_\_, 2003.

\_\_\_\_\_  
Tricia L. Robello, LS #1246  
Deputy County Surveyor  
Sedgwick County Kansas

Entered on transfer record this \_\_\_\_\_ day of \_\_\_\_\_, 2003.

\_\_\_\_\_  
Don Erace  
County Clerk

State of Kansas)  
Sedgwick County) SS

This is to certify that this plat has been filed for record in the office of the Register of Deeds, this \_\_\_\_\_ day of \_\_\_\_\_, 2003, at \_\_\_\_\_ o'clock \_\_\_\_\_ M., and is duly recorded.

\_\_\_\_\_  
Bill Meek  
Register of Deeds

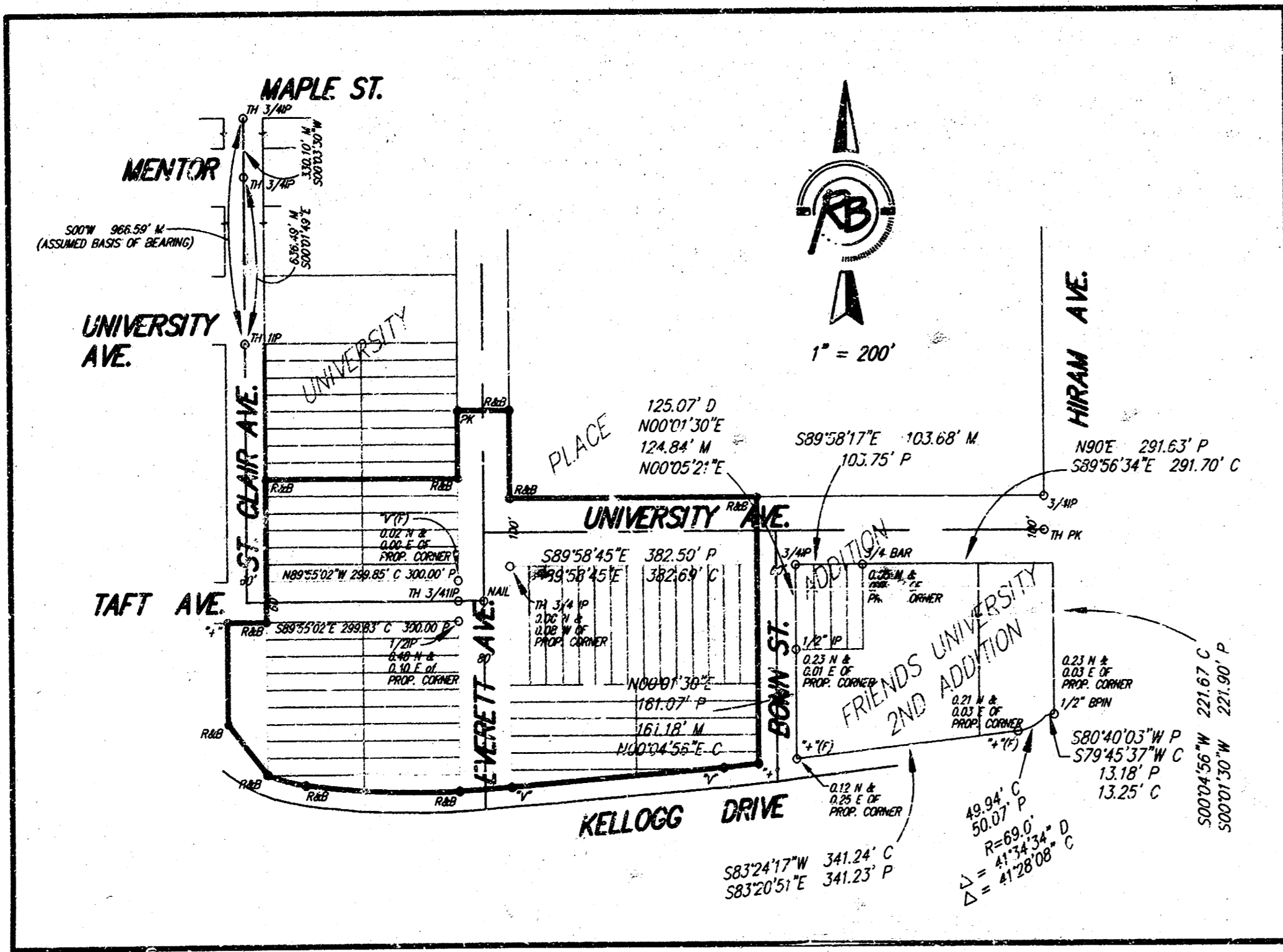
\_\_\_\_\_  
Linda Kizzire  
Deputy

We, the undersigned, holders of a mortgage on the above described property, do hereby consent to this plat of "FRIENDS UNIVERSITY 3RD ADDITION", Wichita, Sedgwick County, Kansas, this \_\_\_\_\_ day of \_\_\_\_\_, 2003.

Bank of America

We, the undersigned, holders of a mortgage on the above described property, do hereby consent to this plat of "FRIENDS UNIVERSITY 3RD ADDITION", Wichita, Sedgwick County, Kansas, this \_\_\_\_\_ day of \_\_\_\_\_, 2003.

Commerce Bank, N.A.



**717**

**Ruggles & Bohm, P.A.**  
Engineering, Surveying, Land Planning

924 North Main (316) 264-8008  
Wichita, Kansas 67203 (316) 264-4621 fax  
www.rbkansas.com E-mail: info@rbkansas.com