

TYLER ENTRY PHASE 3
PAVING STREETS IN

FOX RIDGE ADDITION

AN ADDITION TO THE CITY OF WICHITA
SEDGWICK COUNTY, KANSAS

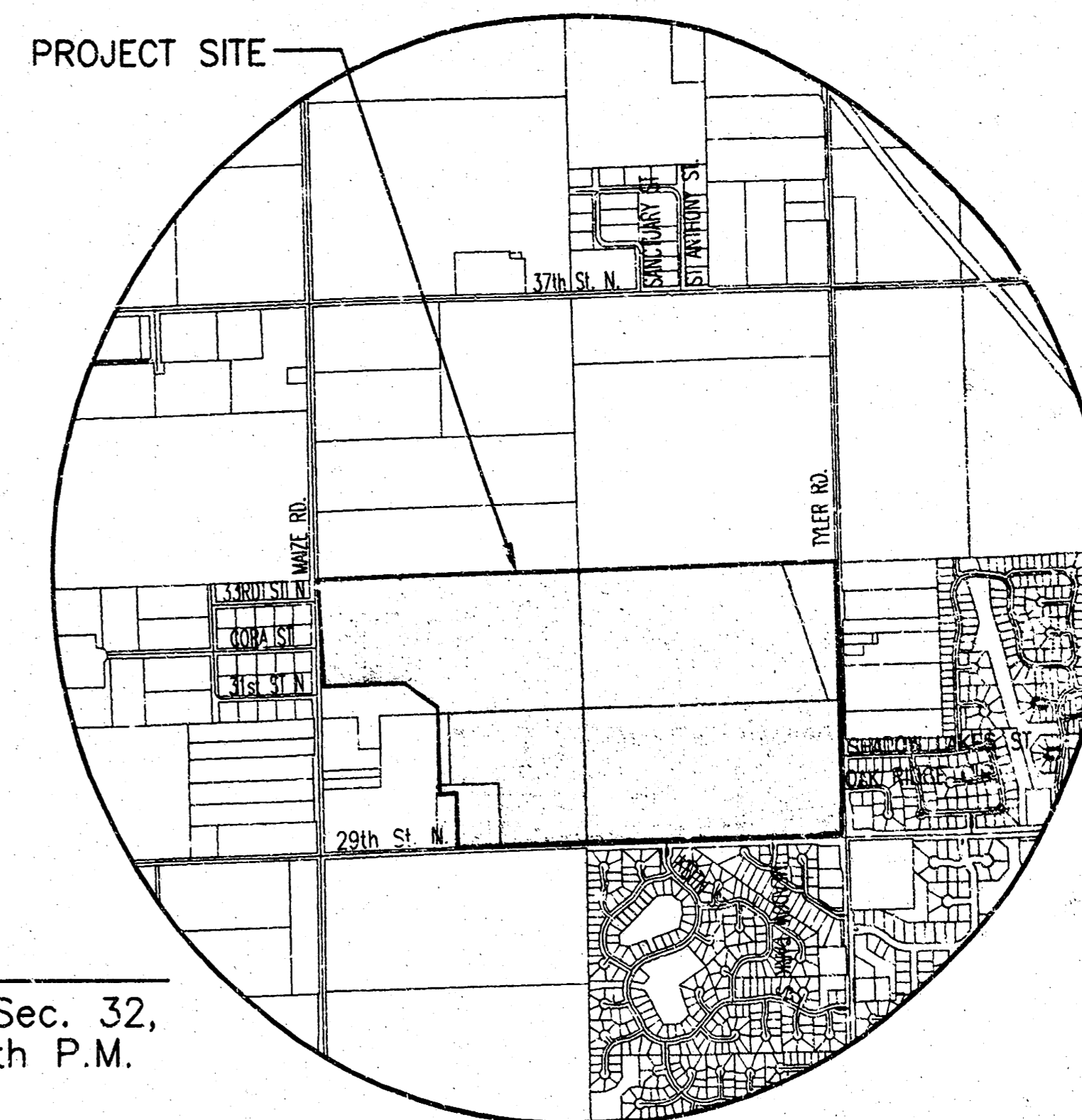
PROJECT NO. 472-83814

NEIL D. CABLE, P.E. - CITY ENGINEER

OCA 765812

WESTLAKES PARKWAY: FROM 80 FEET WEST OF THE WEST LINE OF LOT 33,
BLOCK 5 TO THE WEST LINE OF LOT 146, BLOCK 1.

Center, Sec. 32,
T26S, R1W, 6th P.M.
Fnd. 1/2" Bar w/
Baughman id cap



VICINITY MAP

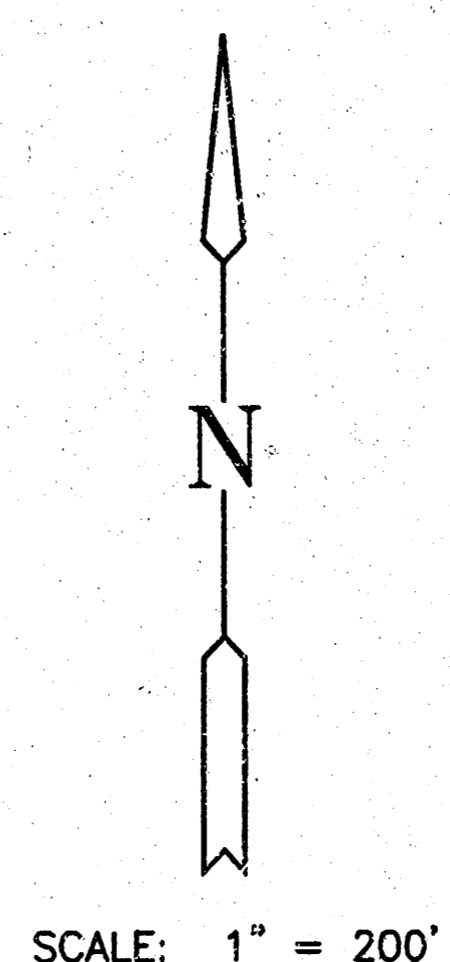
GENERAL NOTES

- UNLESS SHOWN OR STATED OTHERWISE ON THESE DRAWINGS, MATERIALS AND CONSTRUCTION SHALL BE IN ACCORDANCE WITH CITY OF WICHITA CONCRETE PAVEMENT AND ASPHALTIC CONCRETE PAVEMENT SPECIFICATIONS.
- CONTRACTOR WILL BE REQUIRED TO PROVIDE A MINIMUM ADVANCE NOTICE OF FORTY-EIGHT (48) HOURS TO UTILITY COMPANIES PRIOR TO STARTING ANY EXCAVATION AS FOLLOWS:
KANSAS ONE-CALL 1-800-344-7233
OR 687-2470 (LOCAL WICHITA)
THE CONTRACTOR MUST NOTIFY THE FOLLOWING IN CASE OF AN EMERGENCY:
SBC (TELEPHONE) 800-870-8390
COX COMMUNICATIONS (CABLE) 262-0661
WESTAR (ELECTRIC) 383-3600
KANSAS GAS SERVICE (GAS) 832-3101
CITY OF WICHITA WATER & SEWER MAINT. 262-6000
AQUILA (GAS) 946-0096
- THE CONTRACTOR SHALL BE RESPONSIBLE FOR PRESERVING PROPERTY IRONS. THE CONTRACTOR WILL BE REQUIRED TO RE-ESTABLISH ANY PROPERTY IRONS WHICH ARE DAMAGED OR DESTROYED BY HIS CONSTRUCTION OPERATIONS. SUCH IRONS SHALL BE RE-ESTABLISHED BY A LICENSED LAND SURVEYOR IN ACCORDANCE WITH STATE LAWS.
- EXISTING UTILITIES AND THEIR LOCATIONS, AS SHOWN ON THE PLANS REPRESENT THE BEST INFORMATION OBTAINABLE FOR DESIGN. LOCATION INFORMATION HAS BEEN OBTAINED FROM THE VARIOUS UTILITY COMPANIES AND IS EITHER FROM COMPANY RECORD DRAWINGS OR COMPANY PROVIDED FIELD LOCATIONS. THE PLAN LOCATIONS SHOWN ARE NOT GUARANTEED. ADDITIONAL EXISTING UTILITIES MAY BE ENCOUNTERED.
- REMOVE FROM THE REMOVAL OF MISCELLANEOUS STRUCTURES AND EXCESS EXCAVATION WHICH IS TO BE REMOVED SHALL BE DISPOSED OF ON SITES TO BE PROVIDED BY THE CONTRACTOR. THE SITES SHALL BE APPROVED BY THE ENGINEER AS TO LOCATION, APPEARANCE AND SITE LOCATION. LOCATIONS THAT, IN THE OPINION OF THE ENGINEER, WILL LEAVE AN UNSIGHTLY APPEARANCE WILL NOT BE APPROVED. ALL DISPOSAL SITES MUST BE APPROVED BY THE KANSAS DEPARTMENT OF HEALTH AND ENVIRONMENT. MATERIAL EITHER STOCKPILED OR DISPOSED OF IN A FLOOD PLAIN WOULD REQUIRE A KANSAS STATE BOARD OF AGRICULTURE PERMIT. ANY MATERIAL DUMPED IN WATERS OF THE UNITED STATES OR WETLANDS IS SUBJECT TO U.S. CORPS OF ENGINEERS PERMITTING REGULATIONS. ANY MATERIAL BURIED OR STOCKPILED BEYOND APPROVED CONSTRUCTION LIMITS WOULD REQUIRE ADDITIONAL ARCHAEOLOGICAL INVESTIGATIONS UNLESS BURIED IN A PREVIOUSLY APPROVED BORROW LOCATION.
- A SAW CUT OF AT LEAST ONE-HALF THE DEPTH OF THE EXISTING SURFACE COURSES OR ONE-FOURTH THE DEPTH OF THE EXISTING TOTAL PAVEMENT THICKNESS SHALL BE PROVIDED AT LOCATIONS WHERE PROPOSED CONSTRUCTION ADJUTS AN EXISTING SURFACE OR PAVEMENT FOR WHICH PARTIAL REMOVAL OF THAT SURFACE OR PAVEMENT IS REQUIRED. SAW JOINT TO FACILITATE REMOVAL WITHIN THREE (3) FEET OF EXISTING JOINTS WILL NOT BE PERMITTED AND FOR SUCH INSTANCES THE LIMITS OF REMOVAL SHALL EXTEND TO THE EXISTING JOINT. SUCH SAW CUTS WILL NOT BE PAID FOR DIRECTLY AND THIS COST SHALL BE CONSIDERED AS SUBSIDIARY TO THE REMOVAL OF SURFACE OR PAVEMENT.
- CONTRACTOR SHALL SEED AND MULCH ALL DISBURBED AREAS WITH RYE GRASS AT A RATE OF 200 LBS. PER ACRE. GROUND SHALL BE PREPARED IN ACCORDANCE WITH CITY OF WICHITA SPECIFICATIONS.

EARTHWORK SUMMARY	
EXCAVATION	920 C.Y.
LOOSE FILL	530 C.Y.
COMPACTED FILL	40 C.Y.



E. 1/4 Corner, Sec. 32,
T26S, R1W, 6th P.M.
Fnd. 3/4" Pipe



INDEX TO DRAWINGS


SHEET NO.	DESCRIPTION
1	TITLE SHEET
2-3	TYP. PAVING SECTIONS
4	VALLEY GUTTER DETAILS
5	WHEELCHAIR RAMP DETAILS
6	SIGNING DETAILS
7-8	PAVING PLANS
9	RCB PLAN & PROFILE
10-12	RCB DETAILS
13	INLET DETAILS
14	PAVEMENT UNDERDRAIN DETAILS
15-17	EROSION DETAILS
18-22	CROSS SECTIONS
23-25	FINAL PLAN

BENCHMARKS

- BM#1 Square cut top curb W. end of island at Shadow Lakes, East side of Tyler Rd. Elev. = 175.81
- BM#2 RR spike in W. face of South H-pole East of Tyler Rd., 3320 N. Tyler Rd. Elev. = 175.53
- BM#3 RR Spike in South face of South H-pole 3rd H-poles West of Tyler Rd. and 1/2 Mile N. of 29th St. N. Elev. = 169.24

E. 1/4 Corner, Sec. 32,
T26S, R1W, 6th P.M.
Fnd. 3/4" Pipe

AS-BUILT: AUGUST 2004



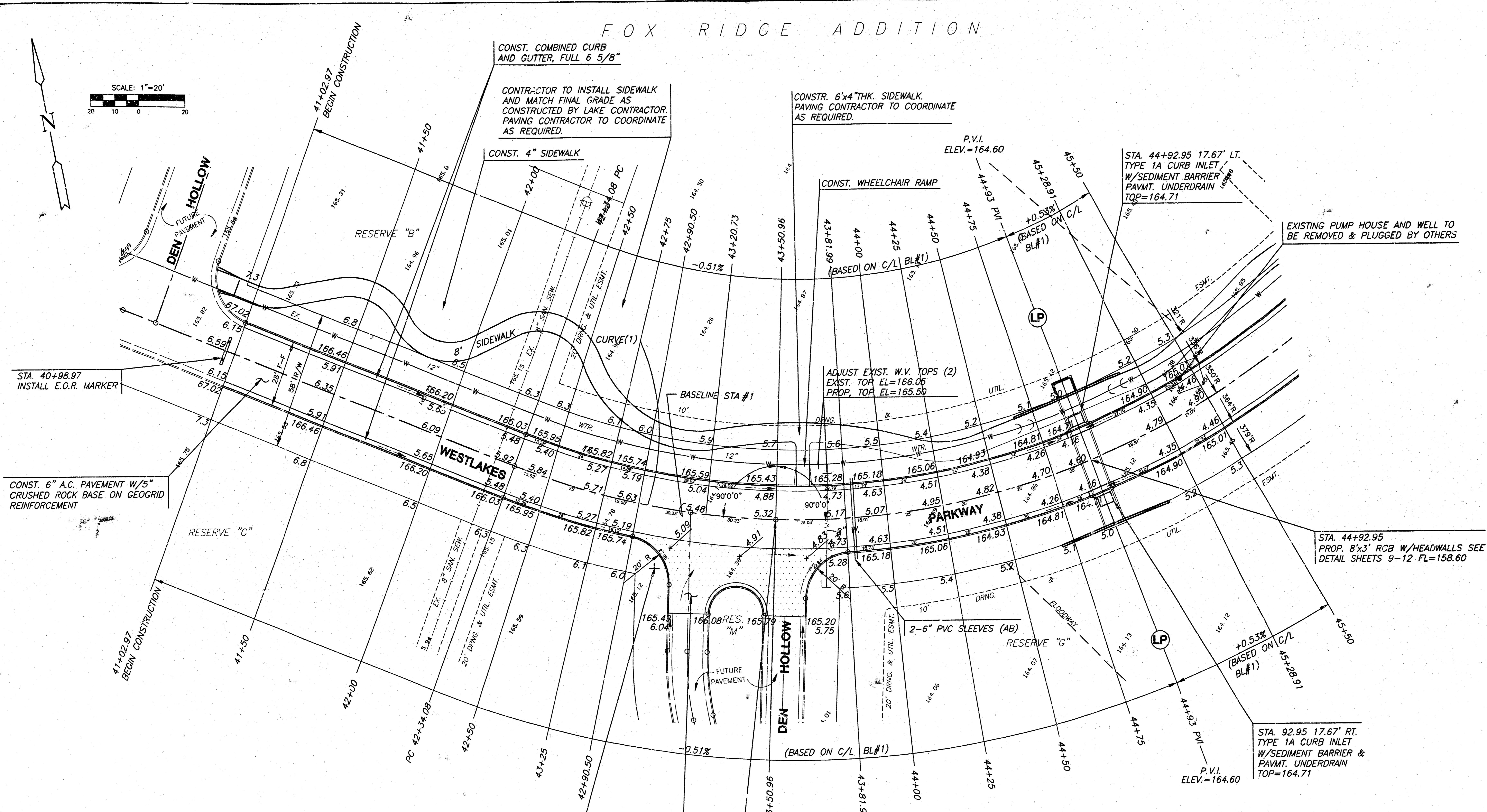
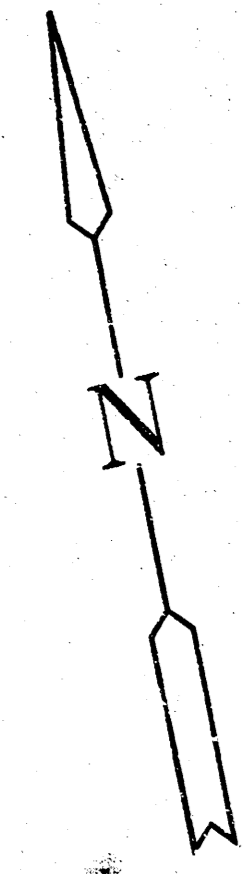
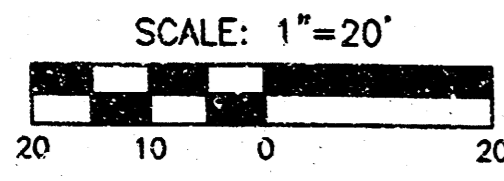
FOX RIDGE ADDITION
PROJECT NAME

TITLE SHEET
SHEET TITLE

DK	DM	DK
DESIGN BY:	DRAWN BY:	CHECKED BY:
JULY 2003	99118ET	1 / 25
DATE	JOB NO.	SHEET/OF

411 N. WEST ROAD
WICHITA, KS. 67206
316-624-9600

FOX RIDGE ADDITION



STA. 40+98.97
INSTALL E.O.R. MARKER

CONST. 6" A.C. PAVEMENT W/5"
CRUSHED ROCK BASE ON GEOGRID
REINFORCEMENT

CONST. COMBINED CURB
AND GUTTER, FULL 6 5/8"

CONTRACTOR TO INSTALL SIDEWALK
AND MATCH FINAL GRADE AS
CONSTRUCTED BY LAKE CONTRACTOR.
PAVING CONTRACTOR TO COORDINATE
AS REQUIRED.

CONSTR. 6"x4" THK. SIDEWALK.
PAVING CONTRACTOR TO COORDINATE
AS REQUIRED.

STA. 44+92.95 17.67' LT.
TYPE 1A CURB INLET
W/SEDIMENT BARRIER
PAVMT. UNDERDRAIN
TOP=164.71

EXISTING PUMP HOUSE AND WELL TO
BE REMOVED & PLUGGED BY OTHERS

ADJUST EXIST. W.V. TOPS (2)
EXIST. TOP EL=166.05
PROP. TOP EL=163.50

STA. 44+92.95
PROP. 8'x3' RCB W/HEADWALLS SEE
DETAIL SHEETS 9-12 FL=158.60

STA. 92.95 17.67' RT.
TYPE 1A CURB INLET
W/SEDIMENT BARRIER &
PAVMT. UNDERDRAIN
TOP=164.71

INSTALL STREET NAME SIGN
WESTLAKES PKWY/DEN HOLLOW
STA. 43+01.64
OFFSET 25.44 RT.

CONST. 7" REINF. CONC. VALLEY
GUTTER W/5" CRUSHED ROCK BASE
ON GEOGRID REINFORCEMENT

STA. 43+50.96, BL #1=
STA. 18+57.08, DEN HOLLOW

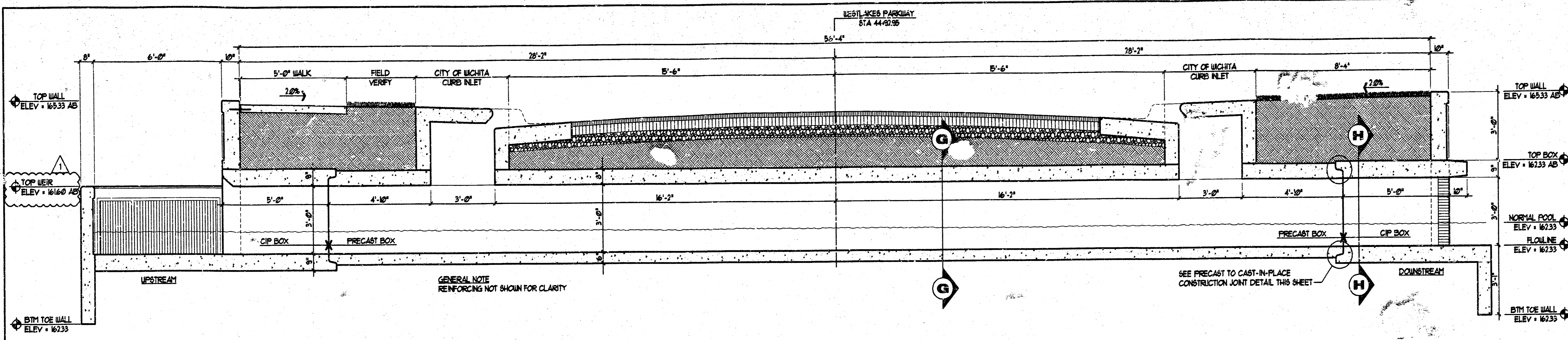
FOX RIDGE ADDITION

AS-BUILT: AUGUST 2004



FOX RIDGE ADDITION
PROJECT NAME
WESTLAKES PARKWAY - ENTRY PHASE 3
SHEET TITLE

DK DESIGN BY.	DM DRAWN BY.	DK CHECKED BY.
JULY 2003 DATE	99118E1 JOB NO.	7 / 25 SHEET/OF



SECTION E-E : HEADWALL / RCB
SCALE 3/8"=1'-0"

GENERAL NOTES

PRECAST BOX CULVERTS
IF PRECAST BOX CULVERTS ARE SPECIFIED, THEY SHALL BE CONSTRUCTED AT THE LOCATIONS SHOWN IN THE PLANS ACCORDING TO THE REQUIREMENTS SHOWN ON THIS SHEET. WHEN APPROVED BY THE ENGINEER, PRECAST BOX CULVERTS MAY BE CONSTRUCTED IN LIEU OF CAST-IN-PLACE BOX CULVERTS. WHEN THE PRECAST OPTION IS CHOSEN BY THE CONTRACTOR, THE CAST-IN-PLACE QUANTITIES SHALL BE USED AS THE BASIS OF PAYMENT WHICH SHALL INCLUDE LABOR, EQUIPMENT, MATERIALS, AND INCIDENTALS NECESSARY TO COMPLETE THE INSTALLATION.

UNLESS OTHERWISE APPROVED BY THE ENGINEER, CAST-IN-PLACE COLLARS SHALL BE REQUIRED AT HORIZONTAL AND VERTICAL CHANGES IN RCB ALIGNMENT. CAST-IN-PLACE BOX SECTIONS AND BINGWALLS ARE REQUIRED EXCEPT AS NOTED ON THIS SHEET. CAST-IN-PLACE SECTIONS MAY BE REQUIRED AT THE DIRECTION OF THE ENGINEER AT JUNCTIONS OF DRAINAGE STRUCTURES.

CAST-IN-PLACE CONCRETE WORK SHALL BE DONE IN ACCORDANCE WITH THE KDOT SPECIFICATIONS AND KDOT'S GUIDELINES FOR STRUCTURAL DESIGN AND DETAIL OF REINFORCED CONCRETE BOX CULVERTS. CLASS AAA (AE) CONCRETE AND GRADE 60 REINFORCING STEEL SHALL BE USED FOR THE CAST-IN-PLACE CONSTRUCTION.

SPECIFICATIONS
SINGLE-CELL PRECAST CONCRETE BOX CULVERTS SHALL CONFORM TO THE REQUIREMENTS OF THE FOLLOWING SPECIFICATIONS EXCEPT AS NOTED IN THE KDOT SPECIFICATIONS. MULTIPLE-CELL PRECAST BOXES SHALL BE DESIGNED IN ACCORDANCE WITH THE CRITERIA USED TO DEVELOP THE SINGLE-CELL PRECAST BOXES (SEE THE LATEST ASHTO SPECIFICATIONS).

CONDITION **MIN FILL** **ASHTO** **EQUIV. ASTM**
2 FT OR MORE FILL 2 FT MD3, TABLE 2 C139, TABLE 2
LESS THAN 2-FT FILL 0 FT MD3, TABLE 2 C880, TABLE 2

FABRICATION
PRIOR TO FABRICATION, THE CONTRACTOR SHALL FURNISH SHOP DRAWINGS TO THE ENGINEER FOR REVIEW. SHOP DRAWINGS SHALL DETAIL ALL PHASES OF CONSTRUCTION INCLUDING LAYOUT, JOINT DETAILS, LIFTING DEVICES, CASTING METHODS, CONSTRUCTION PLACEMENT AND DETAIL OF ANY CAST-IN-PLACE SEGMENTS OR TRANSITIONS THAT MAY BE REQUIRED. COPIES OF OVERWEIGHT AND OVERLOAD PERMITS, WHEN REQUIRED SHALL BE SUBMITTED WITH THE SHOP DRAWINGS.

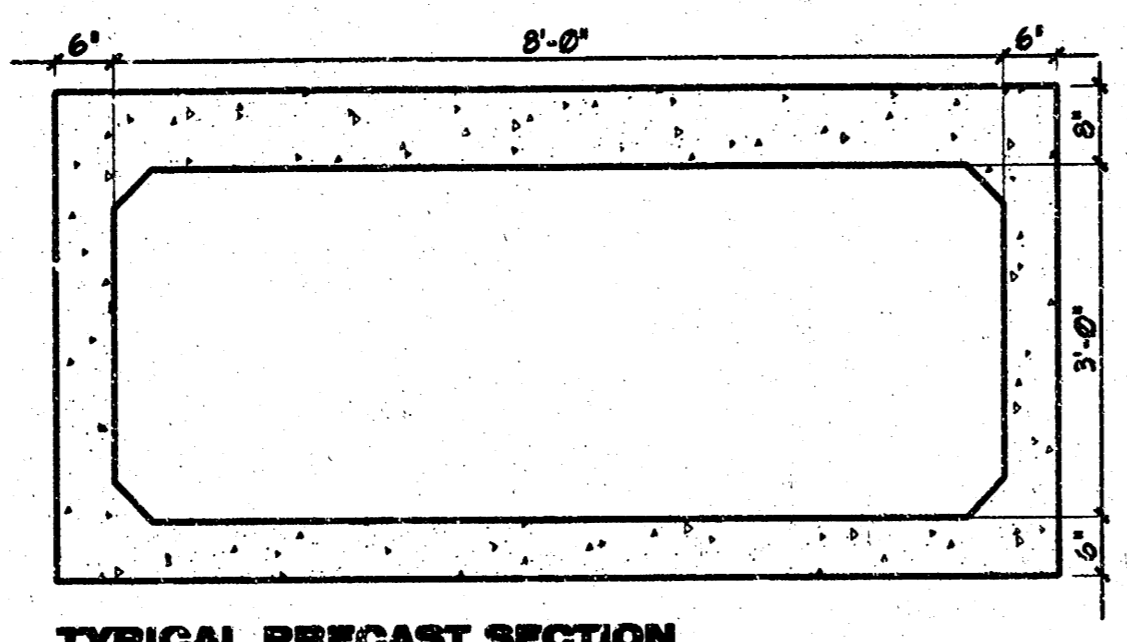
PRECAST CONCRETE BOX CULVERT SHALL BE LAID WITH THE GROOVE END OF EACH SECTION UPSTREAM AND THE SECTIONS SHALL BE TIGHTLY JOINED. JOINT SHALL BE SEALED WITH AN APPROVED BITUMINOUS MASTIC MATERIAL AND GEOTEXTILE OR SEALING BOND OR AN EXTRUDED RUBBER GASKET, INSTALLED IN ACCORDANCE WITH THE RECOMMENDATIONS OF THE MANUFACTURER. LIFTING HOLES SHALL BE PLUGGED WITH A PRECAST PLUG, SEALED AND COVERED WITH MASTIC OR MORTAR.

THE FOLLOWING INFORMATION SHALL BE LEGIBLY MARKED ON AN INSIDE FACE OF EACH BOX SECTION BY WATERPROOF PAINT OR OTHER APPROVED MEANS:

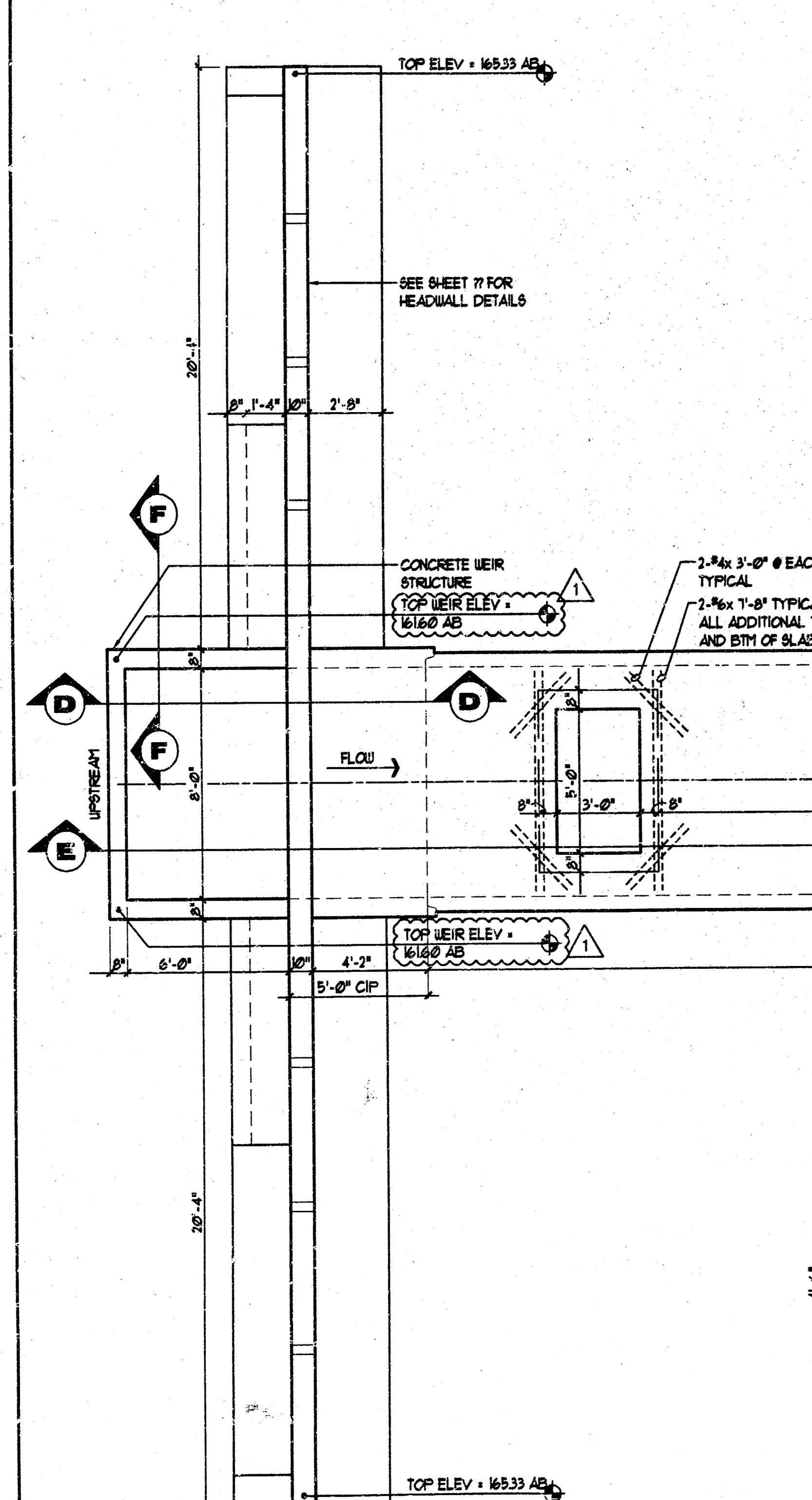
A) DATE OF MANUFACTURE
B) NAME OR TRADEMARK AND LOCATION OF THE MANUFACTURER
C) WEIGHT OF BOX SECTION IN TONS
D) PRICE MARK
E) THE TOP OF THE BOX

CONSTRUCTION REQUIREMENTS
FOUNDATION PREPARATION SHALL BE IN ACCORDANCE WITH KDOT SPECIFICATIONS EXCEPT THAT A MINIMUM 6 INCH THICKNESS OF CRUSHED STONE FOR BACKFILL OR 3 INCH SEAL COURSE SHALL BE PROVIDED. CHOICE OF BEDDING SHALL BE AT THE CONTRACTOR'S OPTION AND APPROVED BY THE ENGINEER.

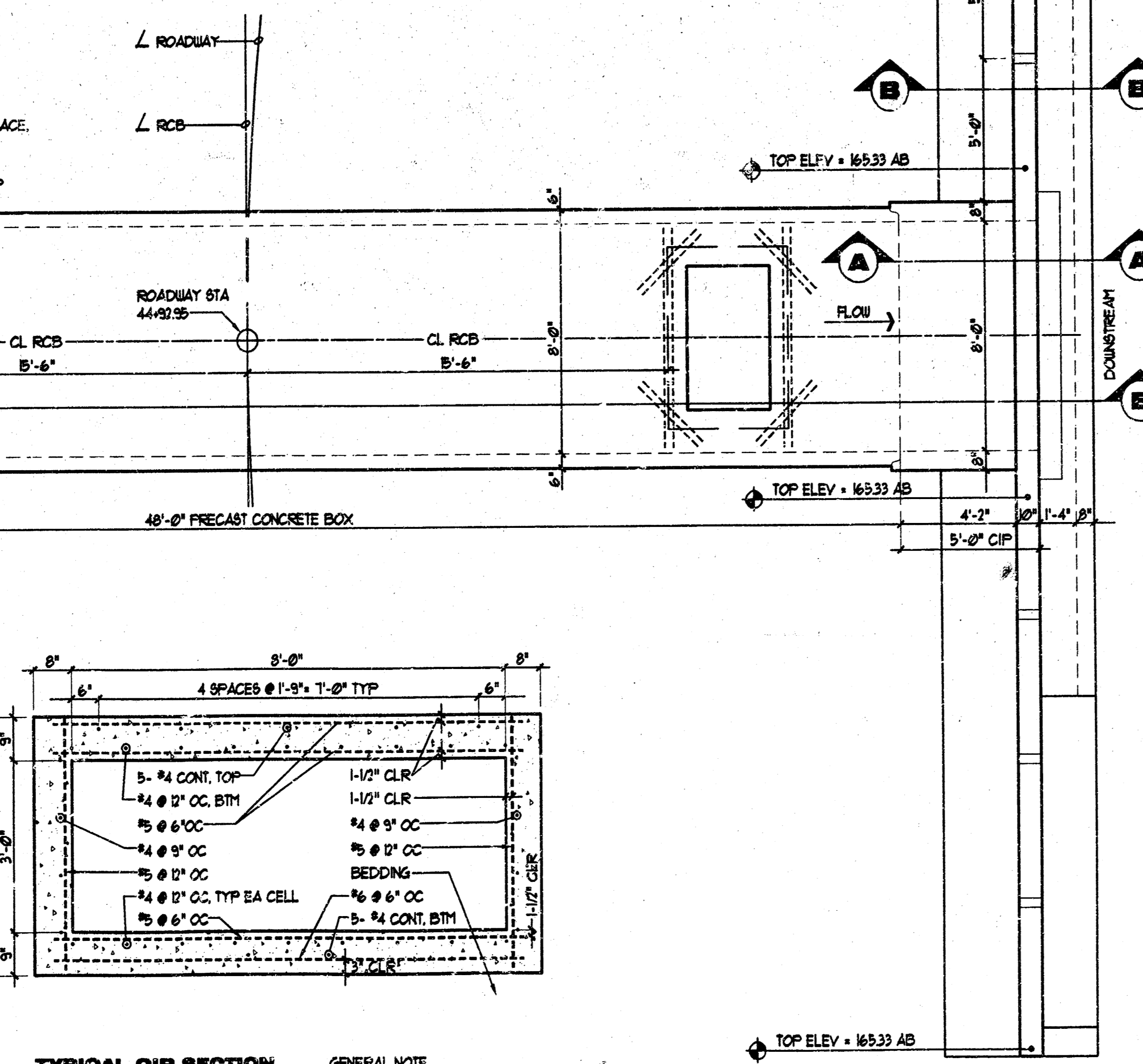
LOADING
HS20-44 ASHTO SPECIFICATIONS, 1996 EDITION
UNIT EXTERIOR
CLASS AAA (AE) CONCRETE, $f_c = 4000$ PSI
REINFORCING STEEL, $f_y = 60,000$ PSI
CONCRETE
CLASS AAA (AE) CONCRETE SHALL BE USED THROUGHOUT.
BEVEL ALL EXPOSED EDGES WITH A 3/4" TRIANGULAR MOLDING.
REINFORCING
ALL REINFORCING SHALL CONFORM TO ASTM A615, GRADE 60.
ALL DIMENSIONS RELATIVE TO REINFORCING STEEL SHALL BE TO CENTERLINE OF BAR UNLESS OTHERWISE NOTED.
EXCAVATION
EXCAVATION FOR CULVERT SHALL NOT BE PAID FOR DIRECTLY BUT SHALL BE SUBORDINARY TO BOX CONSTRUCTION.
STRIKE LINE
BINGWALLS AND THAT PORTION OF THE RCB OUTSIDE THE STRIKE LINE SHALL BE CONSTRUCTED LEVEL. FOOTINGS FOR BINGWALLS SHALL BE CONSTRUCTED WITH THE CULVERT FLOOR.



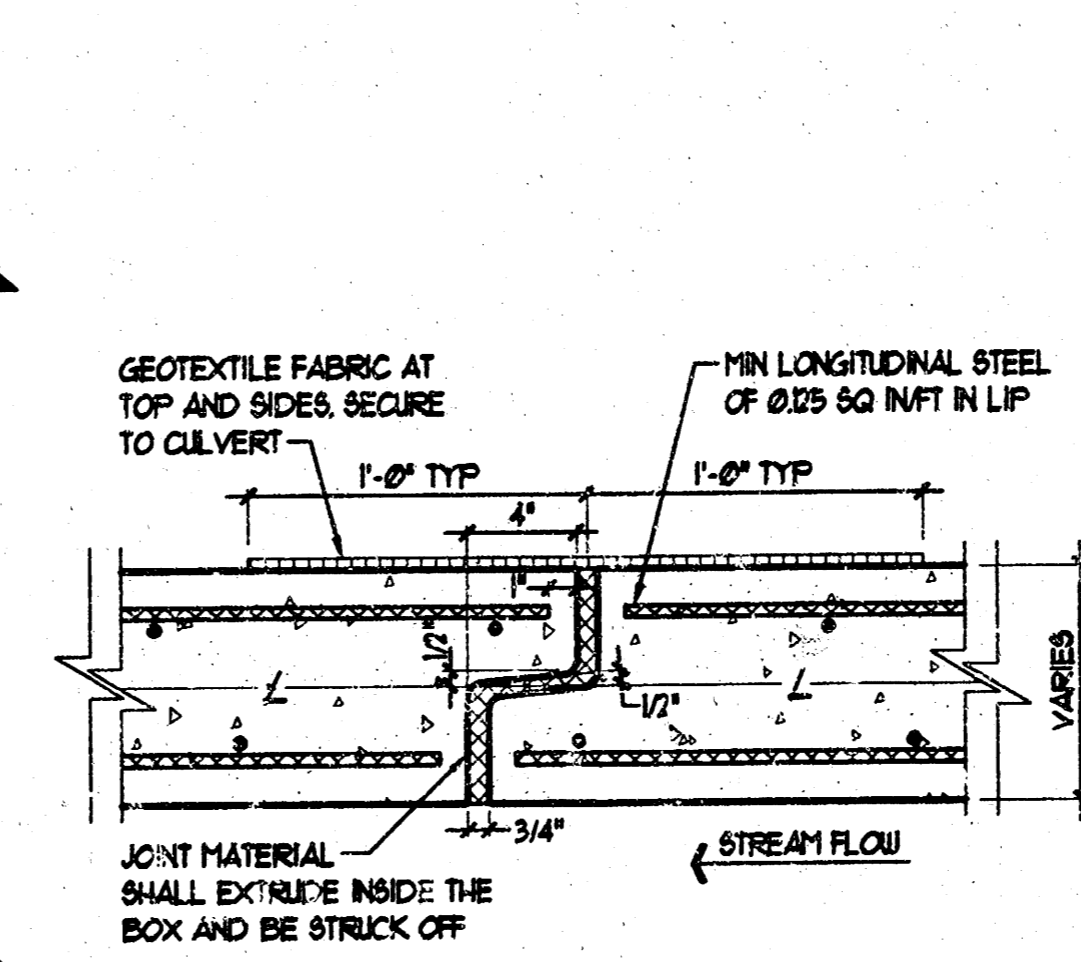
TYPICAL PRECAST SECTION
SECTION G-G
SCALE 1/2"=1'-0"



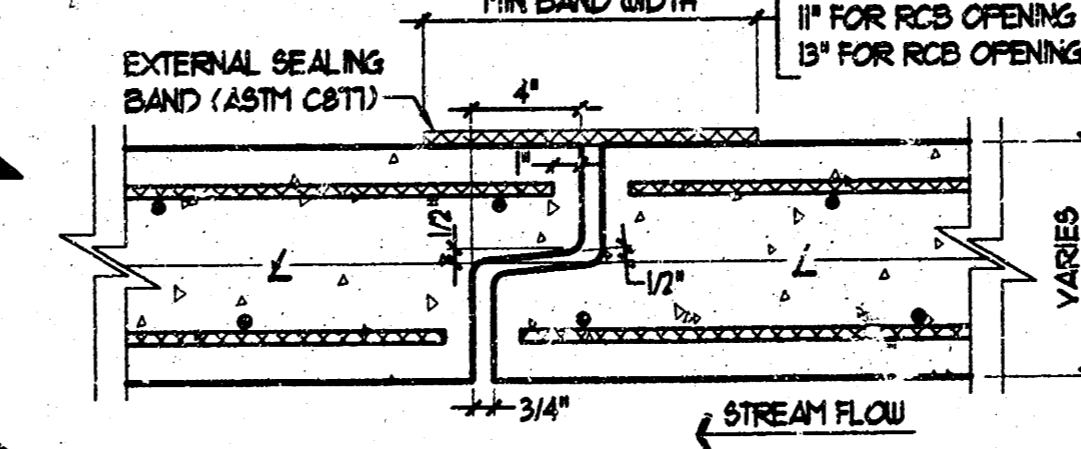
PLAN : HEADWALL / RCB
SCALE 1/4"=1'-0"



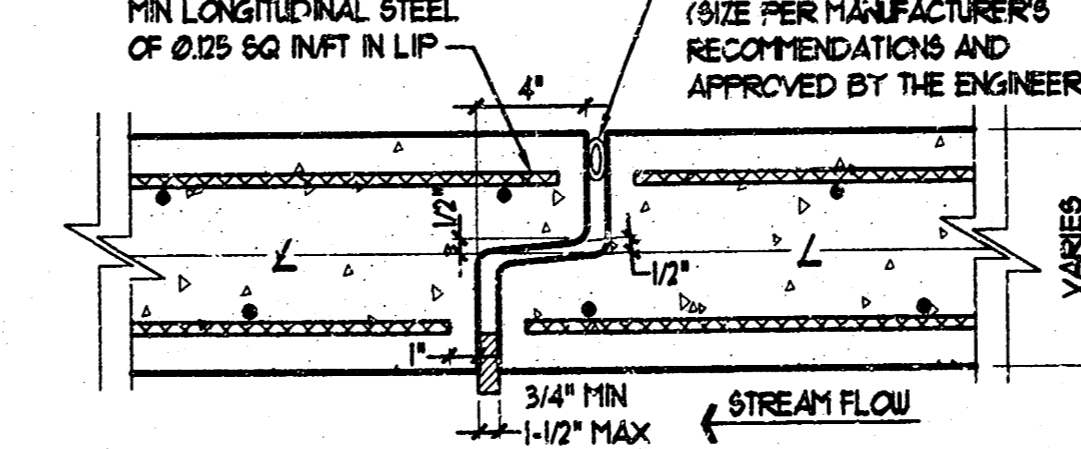
TYPICAL CIP SECTION
SECTION H-H
SCALE 1/2"=1'-0"



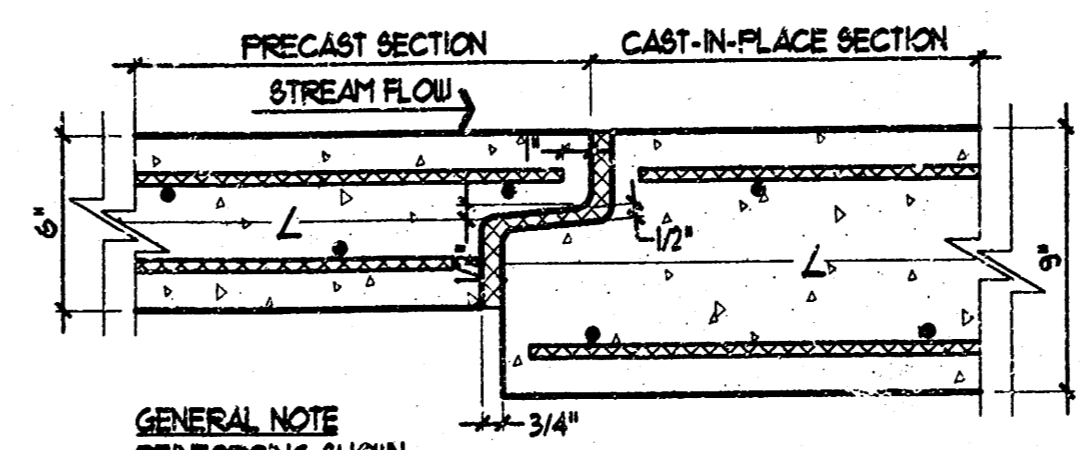
OPTION 'A'
SCALE: 1-1/2"=1'-0"



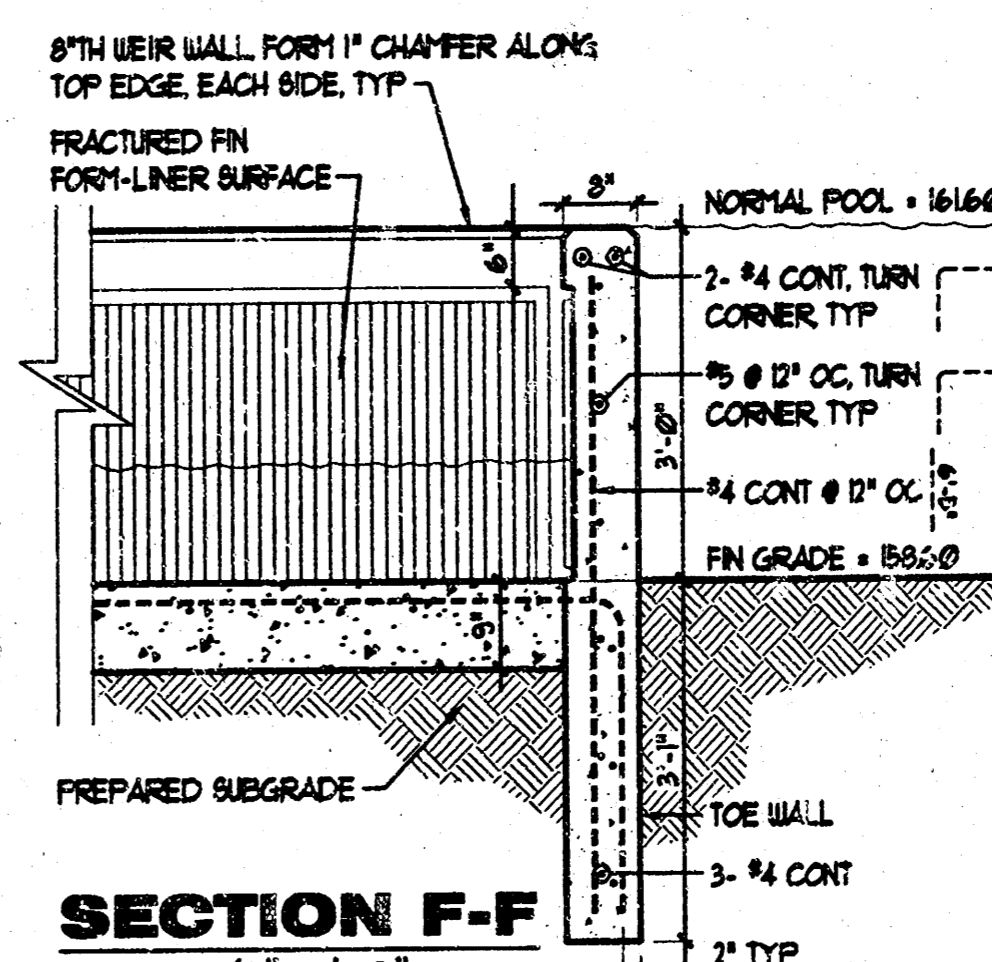
OPTION 'B'
SCALE: 1-1/2"=1'-0"



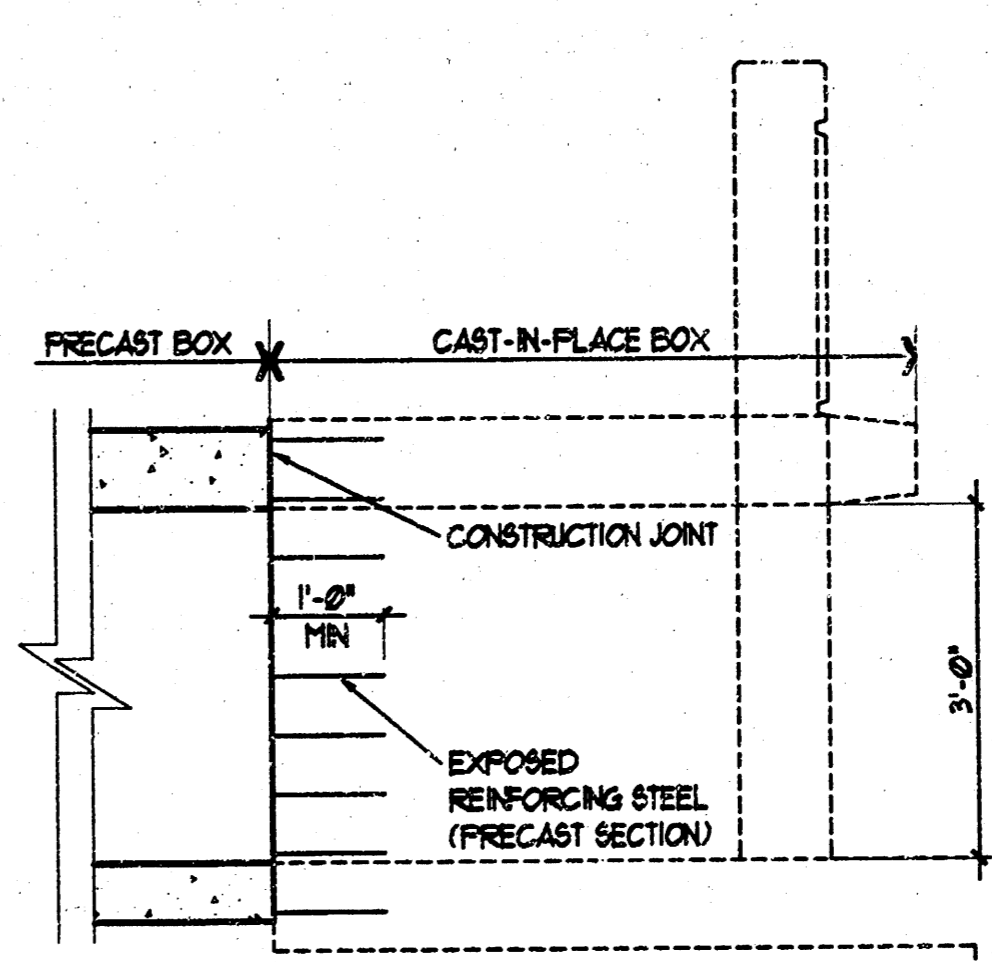
OPEN JOINT DETAIL
SCALE: 1-1/2"=1'-0"



PRECAST TO CIP JOINT
SCALE: 1-1/2"=1'-0"



SECTION F-F
SCALE 1/2"=1'-0"



TYP SECTION
SCALE 1/2"=1'-0"

AS-BUILT: AUGUST 2004
G:\CIVIL\991118\DWG\PAV\RCB\AS-BUILT\991118STRUCT_1

FOX RIDGE ADDITION
ENTRY PAVING - PHASE 1
PROJECT NAME

RCB DETAILS
SHEET TITLE

MKEC
ENGINEERING CONSULTANTS
411 N. WEBB ROAD
WICHITA, KS. 67204
316-684-9000

DESIGN BY: MKEC	DRAWN BY: KLK	CHECKED BY: MKEC
DATE: JULY, 2003	NO. NO.: 9901011118	SHEET NO.: 12 / 25