

PUB. ROAD DIV. NO.	STATE	PROJECT NO.	FISCAL YEAR	SHEET NO.	TOTAL SHEETS
	Kansas	54-87K599(2)	1967	1	2

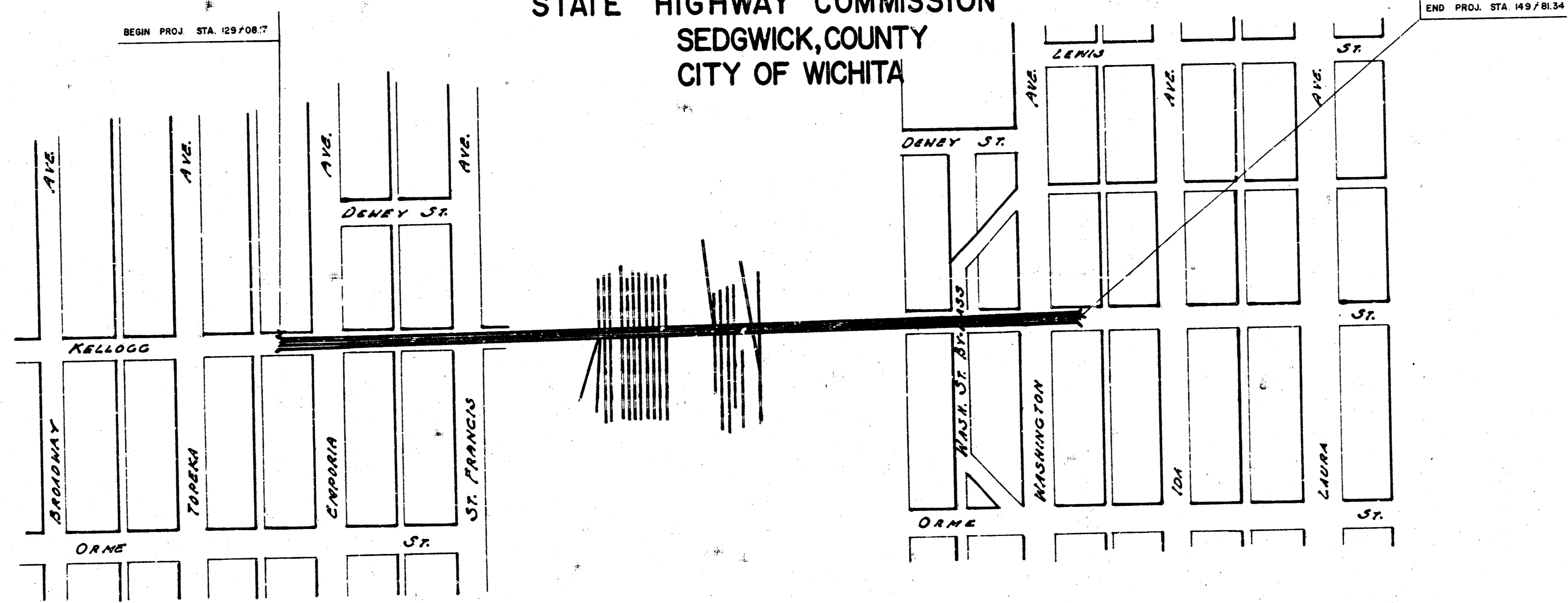
RESURFACING KELLOGG AVE. VIADUCT

FROM 81' W. \bar{C} EMPORIA AVE. - 81.8' E. OF \bar{C} OF WASHINGTON

STATE PROJ. NO. 54-87 K 5199(2) agreement no. 25-67
 CITY " " T 7-124

STATE OF KANSAS

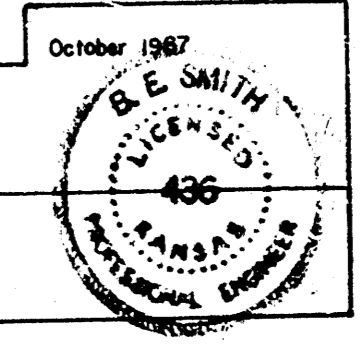
STATE HIGHWAY COMMISSION
 SEDGWICK COUNTY
 CITY OF WICHITA



Survey
 1/11
 Checked
 J.G. Jones
 J. G. Jones

Approved _____ Date _____
 STATE HIGHWAY ENGINEER
 State Highway Commission of Kansas

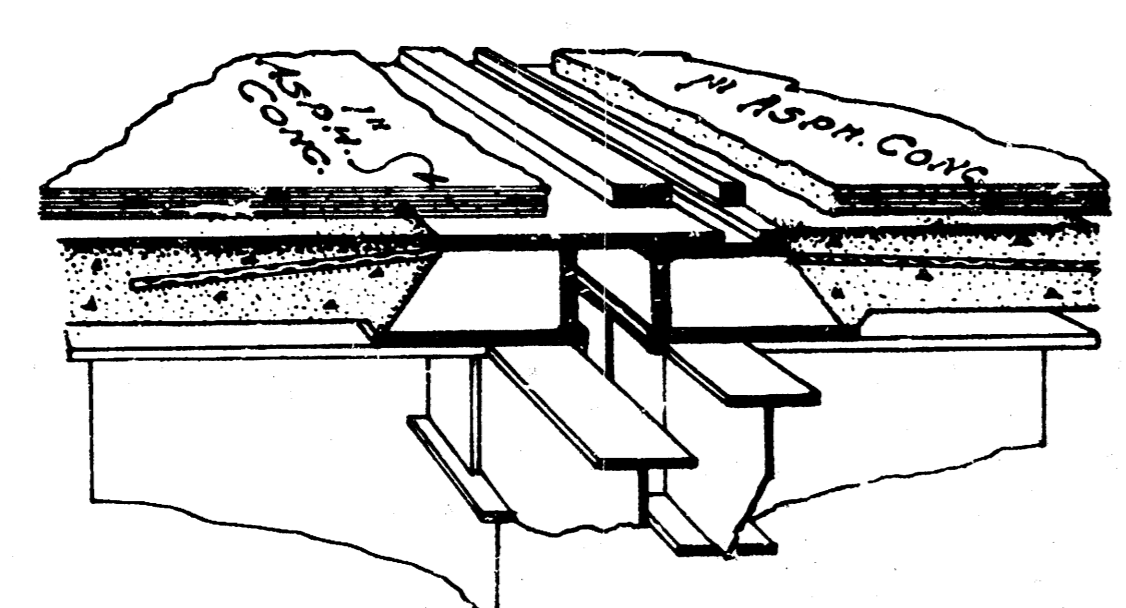
Approved _____ Date _____
 CITY ENGINEER
 Department of Public Works
 City of Wichita, Kansas



OCT. 1967

1/2

Survey J.C. Sells
 Plan
 Checked



"RAISED EXPANSION" DETAIL

ASPHALT MIX (HIP#4)

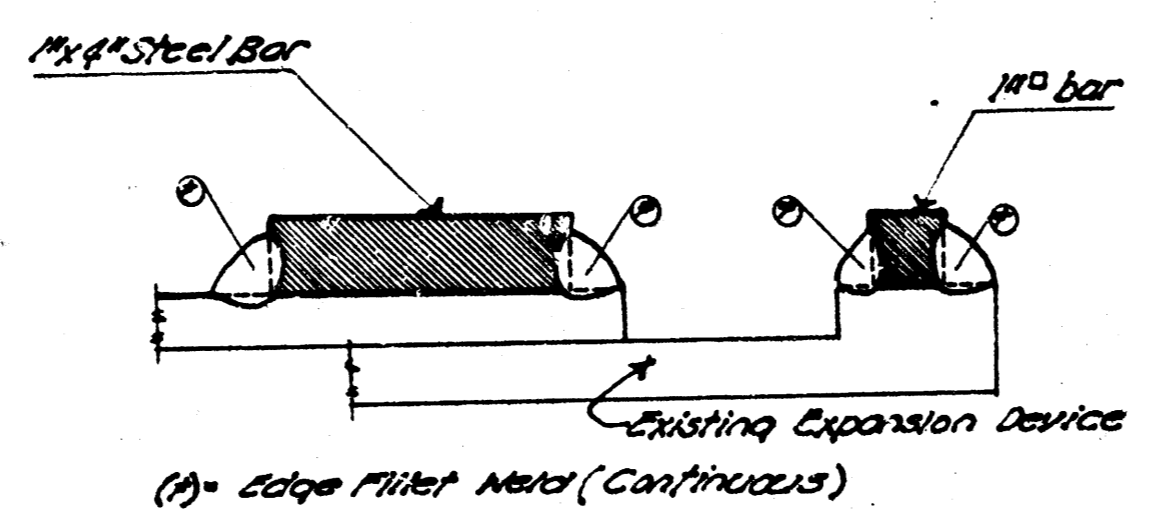
3/4" Sieve	0%
3/8" Sieve	15 to 35%
3/16"	35 to 55%
1/8"	45 to 70%
30	60 to 80%
60	80 to 90%
200	90 to 95%

Bl. not more than (3)
 Moisture in final mixture, max. (4.5%)

BILL OF MATERIAL

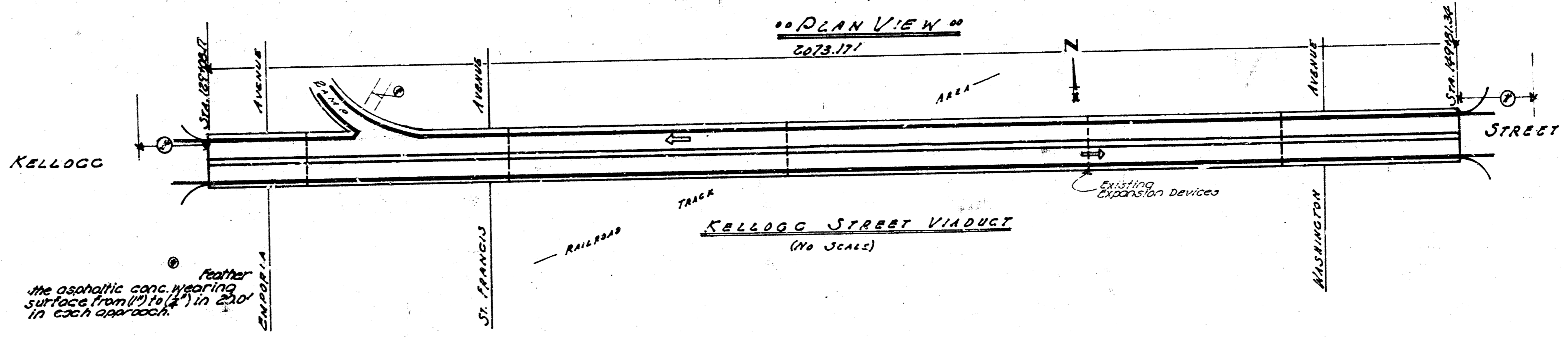
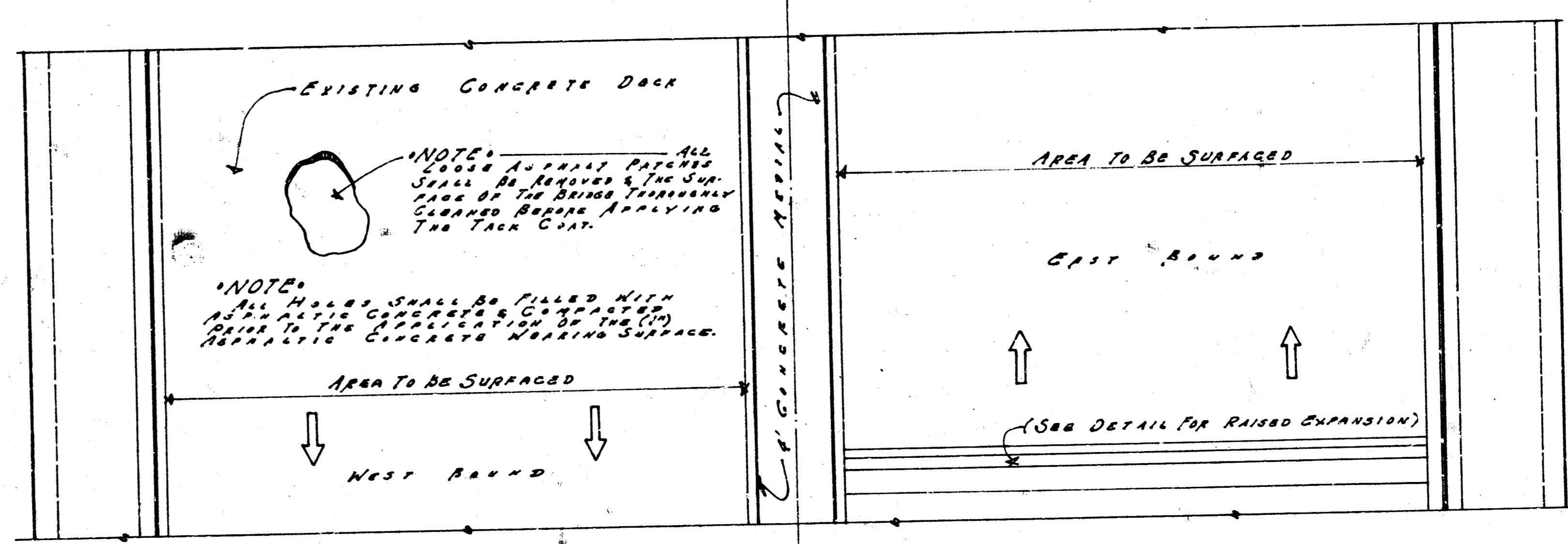
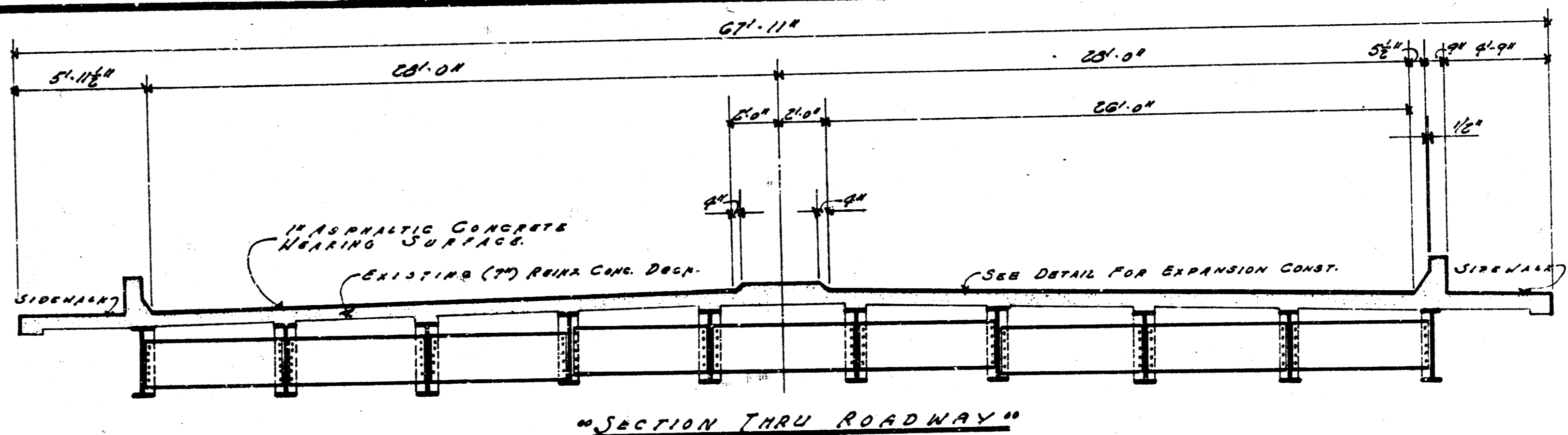
Item	Quan.	Unit
Asphaltic conc.	700	Tons
Tack Coat	1800	Gal.
1/4" Steel Bar	300	L.F.
1/4" Steel Bar	300	L.F.
Clear & Repair Deck Surface		

Steel Bar item to be bid as Raised Expansion Joints & Lump Sum Bid.



"GENERAL NOTES"

Loose concrete, loose asphalt patches & all other loose material is to be removed prior to tack coat application. The cost of removal of loose material & surface clearing is to be incidental to project. Tack coat shall consist of from five one hundredths (0.05) to one tenth (0.10) gallons per square of the type and grade of bituminous material specified. The tack coat is incidental to the bid item of tons asphalt. Traffic is to be maintained thru joint & all times by use of signs & flagmen.



2/3

KELLOGG STREET OVERPASS REPAIR
 STATE PROJ. No. 54-62 K 5103(B) AGENT #2567
 CITY 77-184