

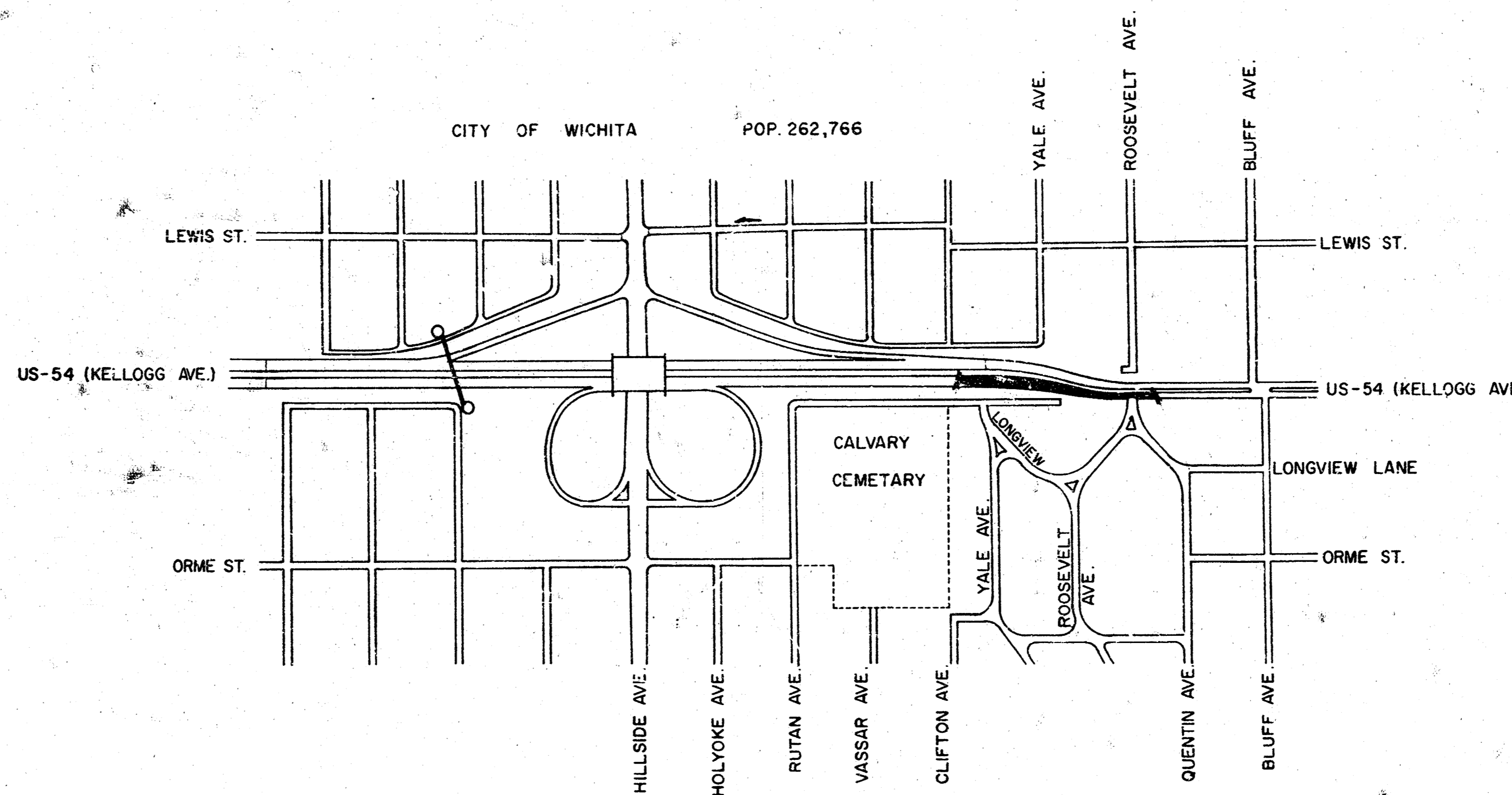
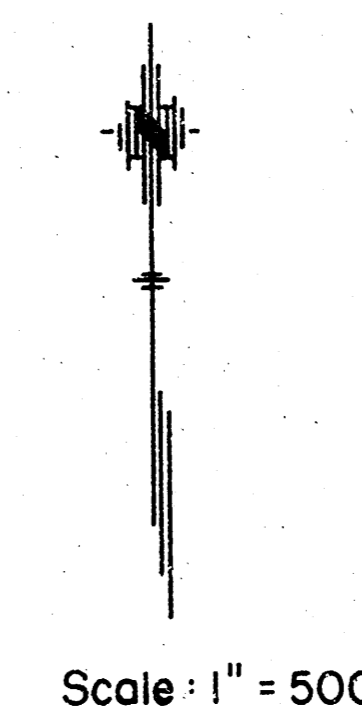
INDEX OF SHEETS

STATE OF KANSAS
DEPARTMENT OF TRANSPORTATION

FHWA REGION NO.	STATE	PROJECT NO.	YEAR	SHEET NO.	TOTAL SHEETS
7	KANSAS	5-34-87-40729-01	1987		

GRADING
SURFACING

PLAN AND PROFILE OF PROPOSED
STATE HIGHWAY
FEDERAL AID PROJECT
SEDGWICK COUNTY
US-54



NOTE: TRAFFIC TO BE CARRIED THROUGH CONSTRUCTION

Sta. 103+22.57 BEGIN
Proj. 54-87-U-0729-01
30' k.t. Sta. 103+22.57 on
Proj. (E.C.) 54-87-K-038-3(48)

Sta. 111+53.06 END
Proj. 54-87-U-0729-01

Surveyed - R.A. Irwin
Plotted - L. Madrid
Designed - K.E. Segelquist
Squad - K. Walker

DESIGN DESIGNATION

CONVENTIONAL SIGNS

COUNTY LINE		RETAINING WALL	
CORPORATE LIMITS		CENTER LINE OF PROJECT	
STATE OR NATIONAL LINE		LEVEE	
TOWNSHIP LINE		CULVERTS	
SECTION LINE		DROP INLETS	
GRANT LINE		ACCESS CONTROL	
FENCE LINE		POWER LINE	
GUARD FENCE		TELEPHONE OR TELEGRAPH LINE	
UNFENCED PROPERTY		MARSH	
RIGHT OF WAY LINE		HEDGE	
TRAVELLED WAY		TREES	
RAILROADS		GRADE ELEVATION	

GROSS LENGTH OF PROJECT 830.49 FT.

EXCEPTIONS

ADDITIONS

NET LENGTH OF PROJECT 830.49 FT. 0.157 MILES
NET LENGTH OF BRIDGES 0.00 FT. 0.000 MILES
NET LENGTH OF ROAD 830.49 FT. 0.157 MILES

RECOM. FOR APPROVAL - DATE	RECOM. FOR APPROVAL - DATE
ENGINEER OF DESIGN KANSAS DEPARTMENT OF TRANSPORTATION	ENGINEER FEDERAL HIGHWAY ADMINISTRATION DEPARTMENT OF TRANSPORTATION
APPROVED - DATE	APPROVED - DATE
STATE TRANSPORTATION ENGINEER KANSAS DEPARTMENT OF TRANSPORTATION	DIVISION ADMINISTRATOR FEDERAL HIGHWAY ADMINISTRATION DEPARTMENT OF TRANSPORTATION

1/3

COUNTY	STATE	PROJECT NO.	YEAR	SHEET NO.	TOTAL SHEETS
7	KANSAS	54-87-U-0729-01	19		

P.I. Sta. 109+19 $\Delta=14^{\circ}19'13''$ Lt.
 1. Spk. & K.D.O.T. Wshr. @ P.I. (2" deep)
 2. & top curve sign po. 50.60 ENE
 3. & top curve sign po. 36.25 W.N.W.

P.I. Sta. 110+49.75 $\Delta=0^{\circ}21'28''$ Lt.
 P.I. is 18' Lt. E.B. Lane Sta. 110+46.07 on
 Proj. 54-87-038-3(48) 1975
 1. Bent Spk. & K.D.O.T. Wshr. @ P.I.
 (top spk. over point)
 2. & "D" cut @ point of curb = BM#42 3.80 NW
 3. S.E. corner conc. barrier 3.80 ESE

P.O.T. Sta. 110+84.69 = Sta. 50+00 on
 T.W. Roosevelt St. Rt. S.E. $\Delta=89^{\circ}53'21''$
 1. 1/2" Rebar @ P.O.T. (buired 3")
 2. & Top fire hydrant 47.30 NNE
 3. & Top Steel Cor. fc. po. 42.70 NNW

P.O.T. Sta. 50+00 = P.O.T. Sta. 110+84.69
 S.E. $\Delta=89^{\circ}53'21''$
 1. 1/2" rebar @ P.O.T. (buired 3")
 2. & top fire hydrant 47.30 NNE
 3. & top Steel cor. fc. po. 42.70 NNW

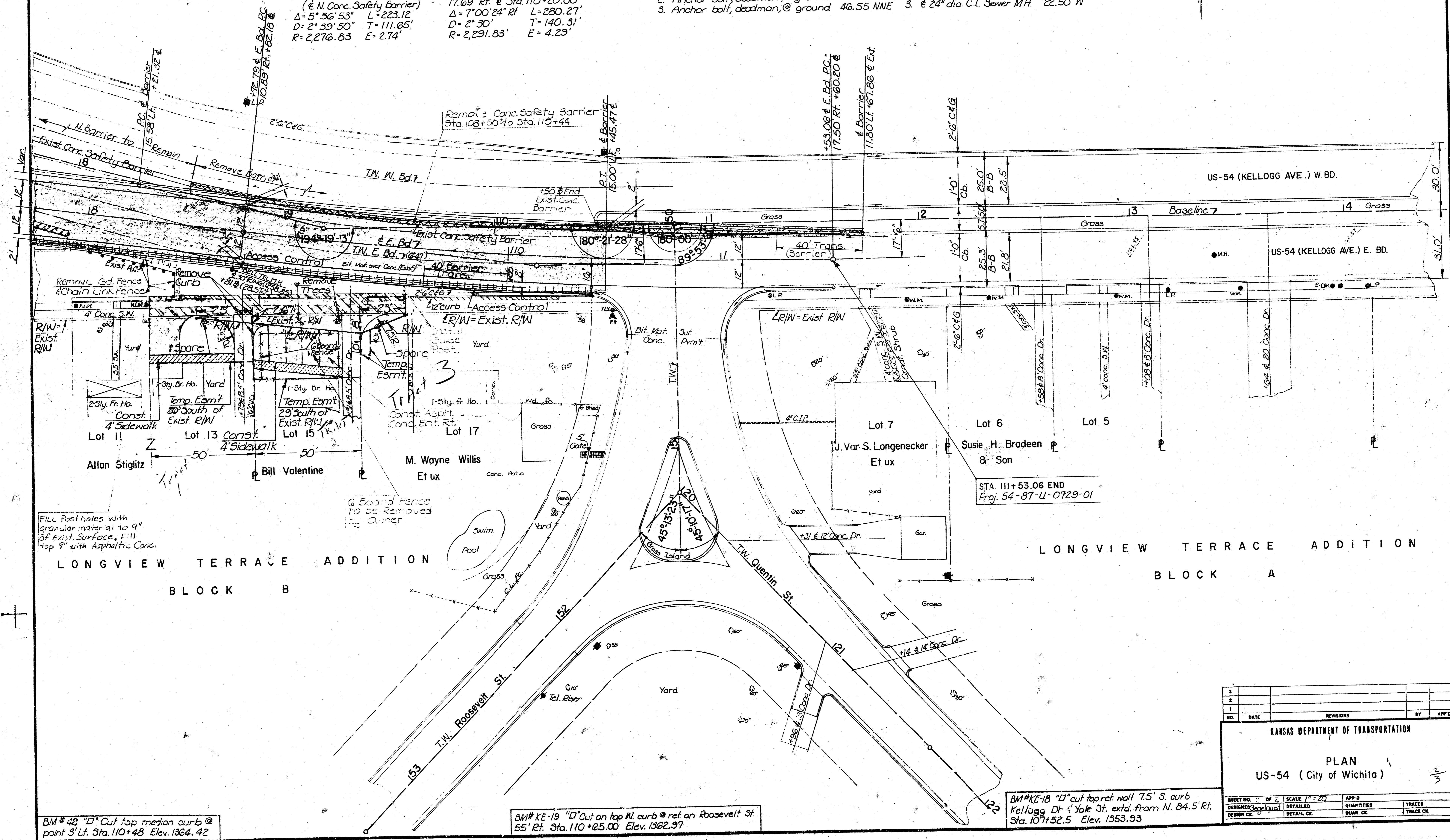
P.I. Sta. 51+19.90 = Sta. 20+00 @ Quentin St. Lt.
 $\Delta=45^{\circ}13'23''$ Rt. on Roosevelt St.
 1. 1/2" rebar @ P.I. (5" deep)
 2. & top fire hydrant
 3. Anchor bolt, Deadman, @ ground
 4. Back curb @ return
 86.50 NNW
 56.85 SSW
 21.50 ESE

P.O.T. Sta. 53+32 on Roosevelt St.
 1. Spk. & K.D.O.T. Wshr. @ P.O.T. (in conc. pvm't)
 2. Anchor bolt, deadman, @ ground 21.20 E
 3. Anchor bolt, deadman, @ ground 46.55 NNE

P.O.T. Sta. 21+63.52 on Quentin St.
 1. Spk. & K.D.O.T. Wshr. in conc. pvm't @ P.O.T.
 2. Curb ret. @ back curb 30.65 N
 3. & 24" dia. C.I. Sewer M.H. 22.50 W

Curve Data
 (& N. Conc. Safety Barrier)
 $\Delta=5^{\circ}36'53''$ L=223.12
 $D=2^{\circ}39'50''$ T=111.65'
 R=2,276.83 E=2.74'

P.I. Sta. 110+13.10 = +12.75 Ah. =
 17.69' Rt. @ Sta. 110+20.00
 $\Delta=7^{\circ}00'24''$ L=280.27'
 $D=2^{\circ}30'$ T=140.31'
 R=2,291.83' E=4.23'



Fill Post holes with
 granular material to 9"
 of Exist. Surface. Fill
 top 9" with Asphaltic Conc.

LONGVIEW TERRACE ADDITION
 BLOCK B

LONGVIEW TERRACE ADDITION
 BLOCK A

BM#42 "D" Cut top median curb @
 point 3' Lt. Sta. 110+48 Elev. 1364.42

BM#KE-19 "D" Cut on top N. curb @ ret. on Roosevelt St.
 55' Rt. Sta. 110+25.00 Elev. 1362.97

BM#KE-18 "D" cut top ret. wall 7.5' S. curb
 Kellogg Dr. & Yale St. extd. from N. 84.5' Rt.
 Sta. 107+52.5 Elev. 1353.93

KANSAS DEPARTMENT OF TRANSPORTATION				
PLAN				
US-54 (City of Wichita)				
3/3				
SHEET NO. 2 OF 2	SCALE 1" = 20'	APP'D	QUANTITIES	TRACED
DESIGNED/checked	DETAILED	DESIGN CK.	QUAN. CK.	TRACE CK.
DESIGN CK.	DETAIL CK.			

STATE	PROJECT NO.	YEAR	SHEET NO.	TOTAL SHEETS
KANSAS	54-87-038-3(48)1975	1975	3	3

LEGEND

- Removal
- Overlay
- 5" Asp. Conc.
- 14 1/2" Asp. Conc.
- Const. Sidewalk
- Remove Exist. Conc. Barrier
- Const. Conc. Safety Barrier

@ P.I. Sta. 109+19 Δ=14°19'13" Lt.
 1. Spk. & K.D.O.T. Wshr. @ P.I. (5" deep)
 2. @ top curve sign po. 50.60 ENE
 3. @ top curve sign po. 36.25 W.N.W.

@ P.I. Sta. 110+49.75 Δ=0°21'28" Lt.
 P.I. is 18' Lt. E.B. Lane Sta. 110+46.07 on
 Proj. 54-87-038-3(48)1975
 1. Bent Spk. & K.D.O.T. Wshr. @ P.I.
 (top spk. over point)
 2. @ "D" out @ point of curb = BM#42 3.80 NW
 3. S.E. corner conc. barrier 3.80 ESE.

@ P.O.T. Sta. 110+84.69 = Sta. 50+00 on
 T.W. Roosevelt St. Rt. 3E Δ=89°53'21"
 1. 1/2" Rebar @ P.O.T. (buired 3")
 2. @ Top fire hydrant 47.30 NNE
 3. @ Top Steel Cor. fo. po. 42.70 NNW

P.O.T. Sta. 50+00 = P.O.T. Sta. 110+84.69
 3E Δ=89°53'21"
 1. 1/2" rebar @ P.O.T. (buired 3")
 2. @ top fire hydrant 47.30 NNE
 3. @ top Steel cor. fo. po. 42.70 NNW

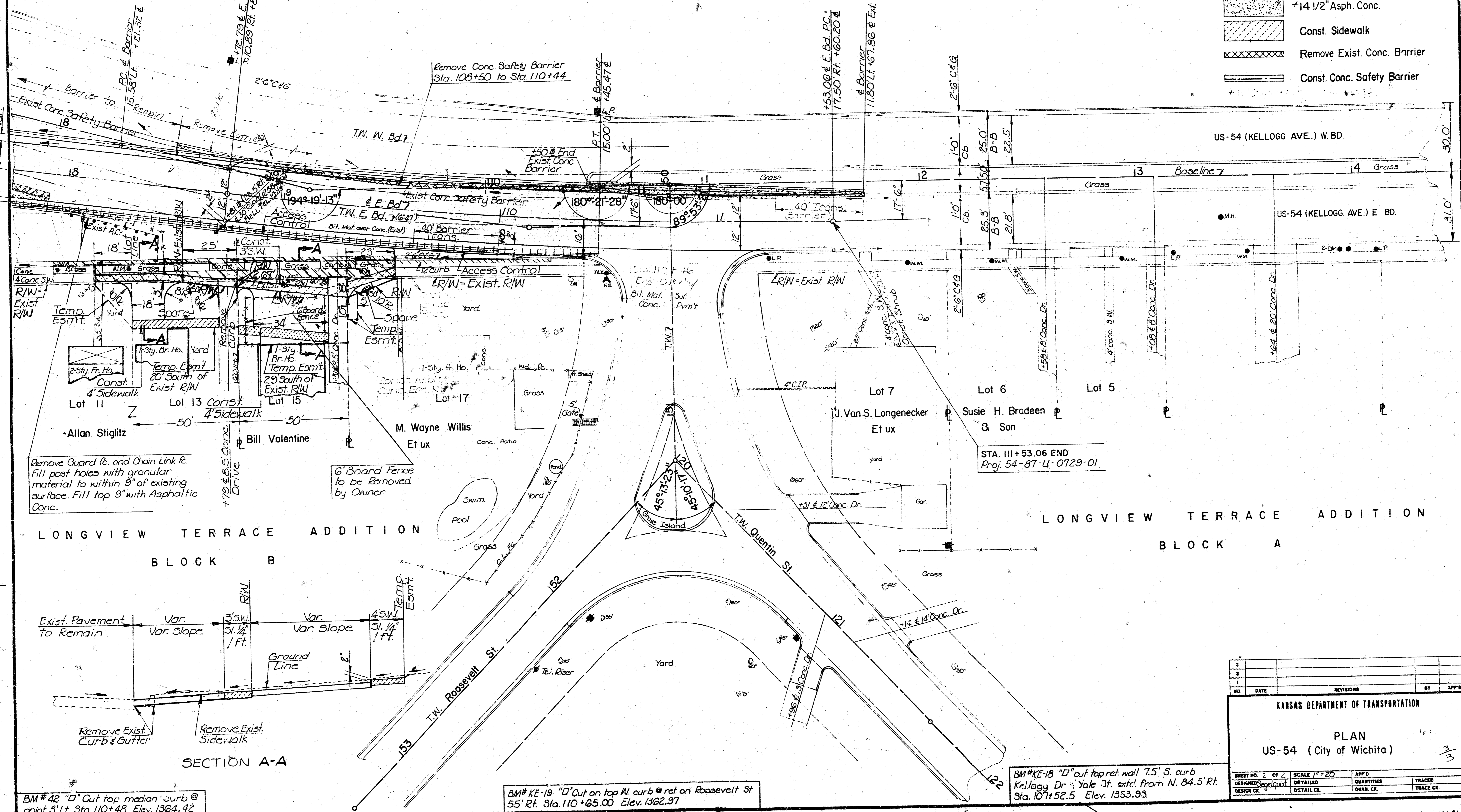
P.I. Sta. 51+19.90 = Sta. 20+00 @ Quentin St. Lt.
 Δ=45°13'23" Rt. on Roosevelt St.
 1. 1/2" rebar @ P.I. (5" deep) 86.50 NNW
 2. @ top fire hydrant 56.85 SSW
 3. Anchor bolt, Deadman, @ ground 21.50 ESE
 4. Back curb @ return

Curve Data
 (E N. Conc. Safety Barrier)
 Δ=5°36'53" L=223.12
 D=2°39'50" T=111.65'
 R=2,276.83 E=2.74'

P.I. Sta. 110+13.10 = +12.75 Ah. =
 17.69' Rt. @ Sta. 110+20.00
 Δ=7°00'24" Rt L=280.27'
 D=2°30' T=140.31'
 R=2,291.83' E=4.29'

P.O.T. Sta. 53+32 on Roosevelt St.
 1. Spk. & K.D.O.T. Wshr. @ P.O.T. (in conc. pvm't)
 2. Anchor bolt, deadman, @ ground 21.20 E
 3. Anchor bolt, deadman, @ ground 46.55 NNE

P.O.T. Sta. 21+63.52 on Quentin St.
 1. Spk. & K.D.O.T. Wshr. in conc. pvm't @ P.O.T.
 2. Curb ret. @ back curb 30.65 N
 3. @ 24" dia. C.I. Sower M.H. 22.50 W



BM#42 "D" Cut top median curb @ point 3' Lt. Sta. 110+48 Elev. 1364.42

BM#KE-19 "D" Out on top N. curb @ ret. on Roosevelt St. 55' Rt. Sta. 110+65.00 Elev. 1362.97

BM#KE-18 "D" out top ret. wall 7.5' S. curb Kellogg Dr. Yale St. extd. from N. 84.5 Rt. Sta. 107+52.5 Elev. 1353.93

KANSAS DEPARTMENT OF TRANSPORTATION				
PLAN				
US-54 (City of Wichita)				
NO.	DATE	REVISIONS	BY	APP'D
1				
2				
3				
SHEET NO. 3 OF 3		SCALE 1" = 20'	APP'D	TRACED
DESIGNED		DETAILED	QUANTITIES	TRACED
CHECKED		DETAILS	QUAN. CK.	TRACE CK.