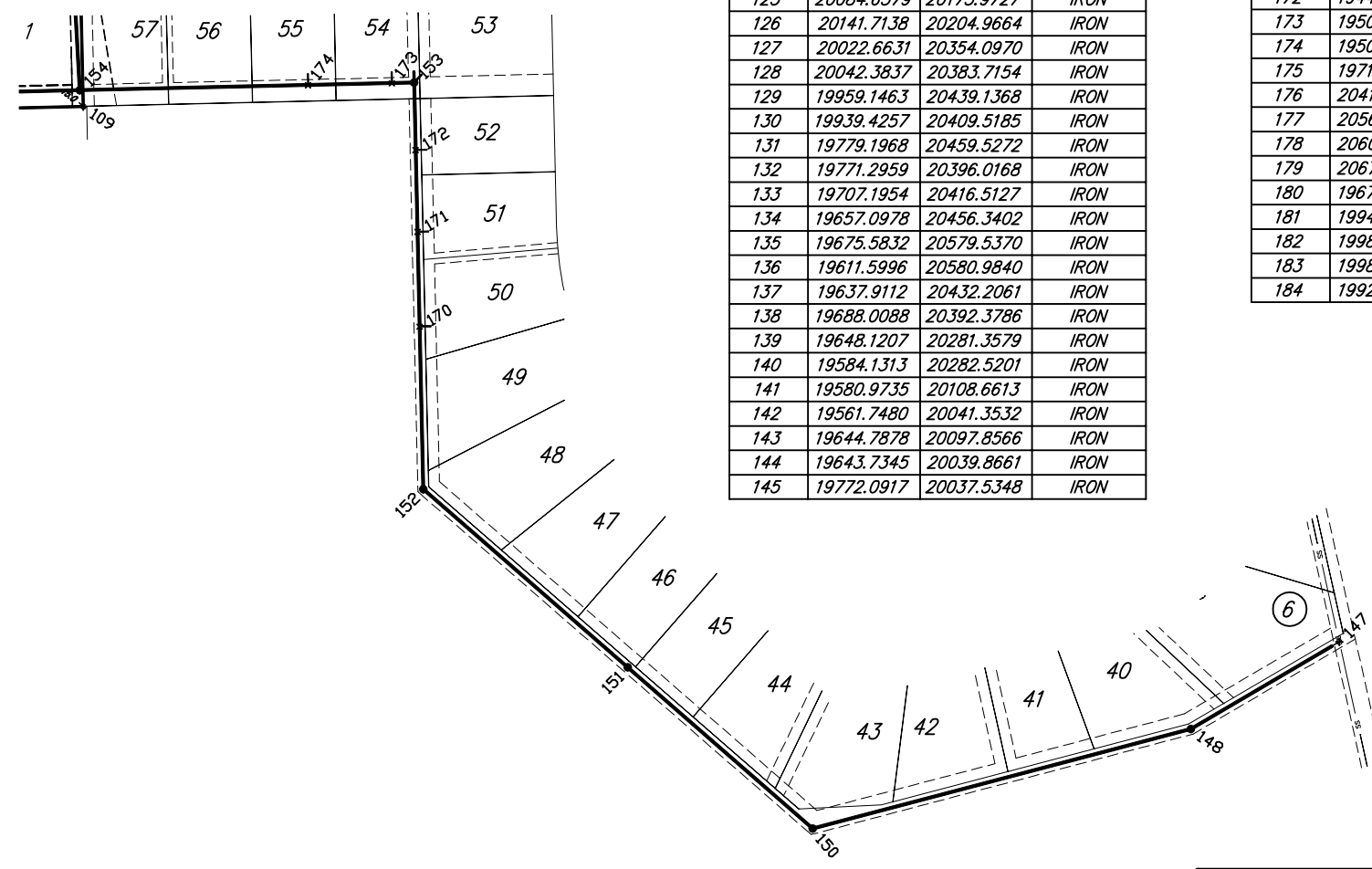
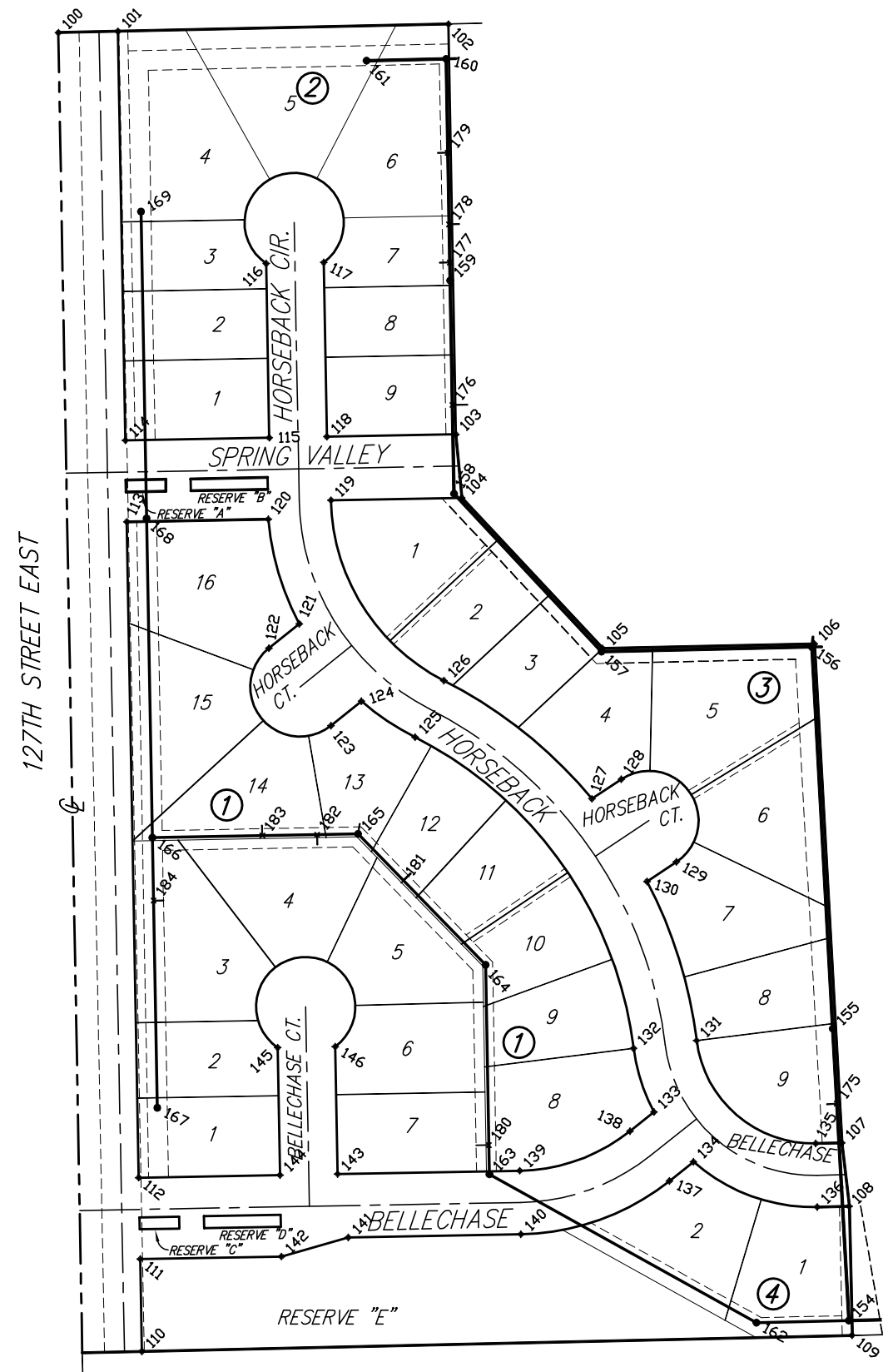




SCALE: 1" = 80'



POINT TABLE			
POINT #	NORTHING	EASTING	DESCRIPTION
100	20794.2464	19816.6338	SECTION COR.
101	20795.5483	19876.6200	IRON
102	20802.7741	20209.5437	IRON
103	20389.6636	20217.0471	IRON
104	20325.7619	20223.0433	IRON
105	20173.9963	20364.8614	IRON
106	20178.6262	20578.1843	IRON
107	19676.1779	20605.8315	IRON
108	19612.3273	20613.1627	IRON
109	19482.3606	20616.1019	IRON
110	19466.1833	19900.7654	IRON
111	19559.1638	19899.0766	IRON
112	19641.1503	19897.5875	IRON
113	20301.6298	19885.5911	IRON
114	20383.6163	19884.1020	IRON
115	20386.2495	20029.0781	IRON
116	20561.6890	20025.8916	IRON
117	20562.7423	20083.8820	IRON
118	20387.3028	20087.0685	IRON
119	20323.3678	20091.2303	IRON
120	20304.2194	20028.1638	IRON
121	20198.8902	20059.3321	IRON
122	20174.2967	20028.6630	IRON
123	20096.2820	20091.2225	IRON
124	20120.8754	20121.8917	IRON
125	20084.6579	20175.9727	IRON
126	20141.7138	20204.9664	IRON
127	20022.6631	20354.0970	IRON
128	20042.3837	20383.7154	IRON
129	19959.1463	20439.1368	IRON
130	19939.4257	20409.5185	IRON
131	19779.1968	20459.5272	IRON
132	19771.2959	20396.0168	IRON
133	19707.1954	20416.5127	IRON
134	19657.0978	20456.3402	IRON
135	19675.5832	20579.5370	IRON
136	19611.5996	20580.9840	IRON
137	19637.9112	20432.2061	IRON
138	19688.0088	20392.3786	IRON
139	19648.1207	20281.3579	IRON
140	19584.1313	20282.5201	IRON
141	19580.9735	20108.6613	IRON
142	19561.7480	20041.3532	IRON
143	19644.7878	20097.8566	IRON
144	19643.7345	20039.8661	IRON
145	19772.0917	20037.5348	IRON

POINT TABLE			
POINT #	NORTHING	EASTING	DESCRIPTION
146	19773.1450	20095.5252	IRON
147	18990.7033	21769.4486	EX MH
148	18910.8062	21633.1059	MH 1-1
150	18819.4564	21285.8156	MH 1-2
151	18967.4112	21115.9614	MH 1-3
152	19130.9284	20928.2415	MH 1-4
153	19504.2325	20919.7993	MH 1-5
154	19497.2868	20612.6704	MH 1-6
155	19791.1980	20596.4980	MH 1-7
156	20175.5640	20575.3483	MH 1-8
157	20170.9679	20363.5854	MH 1-9
158	20329.8328	20215.1333	MH 1-10
159	20544.5835	20211.2328	MH 1-11
160	20767.7146	20207.1800	MH 1-12
161	20765.9756	20127.0573	MH 1-13
162	19495.1823	20519.6143	MH 2-1
163	19644.5654	20250.8079	MH 2-2
164	19855.4437	20246.9777	MH 2-3
165	19987.3289	20118.5294	MH 2-4
166	19983.5663	19911.3714	MH 2-5
167	19711.5019	19916.3130	MH 3-1
168	20304.9925	19905.5333	MH 4-1
169	20613.9415	19899.9219	MH 4-2
170	19280.2782	20924.8639	SEWER RISER, L50
171	19367.3900	20922.8939	SEWER RISER, L51
172	19442.3483	20921.1988	SEWER RISER, L52
173	19503.7710	20899.3945	SEWER RISER, L54
174	19502.0301	20822.4142	SEWER RISER, L55
175	19715.7430	2060.6499	SEWER RISER, L9, B3
176	20419.3042	20213.5082	SEWER RISER, L10
177	20562.6806	20210.9041	SEWER RISER, L7, B2
178	20601.1542	20210.2053	SEWER RISER, L12
179	20673.3123	20208.8946	SEWER RISER, L6, B2
180	19673.9605	20250.2740	SEWER RISER, L7, B1
181	19940.4109	20164.2248	SEWER RISER, L12, B1
182	19986.5789	20077.2381	SEWER RISER, L4, B1
183	19985.5762	20022.0311	SEWER RISER, L14, B1
184	19920.1467	19912.5233	SEWER RISER, L3, B1

Bellechase
Key Map
WICHITA, KANSAS



Ruggles & Bohm, P.A.
Engineering, Surveying, Land Planning

824 North Main
Wichita, Kansas 67203
www.rbkansas.com

(316) 264-8008
(316) 264-4621 fax
E-mail: info@rbkansas.com

DESIGN: KWL
DRAWN: MLP
REVIEW: UTILITY

PROJECT NUMBER: 468-84203

DATE: Sept. 18, 2008

FR JOB: 2003E

SHEET: 13 OF 14

DRAWING FILE: SS [KEY MAP]