

MH # 5646-156
Approx depth = 7.1 ft

MH # 5646-155
Approx depth = 7.7 ft

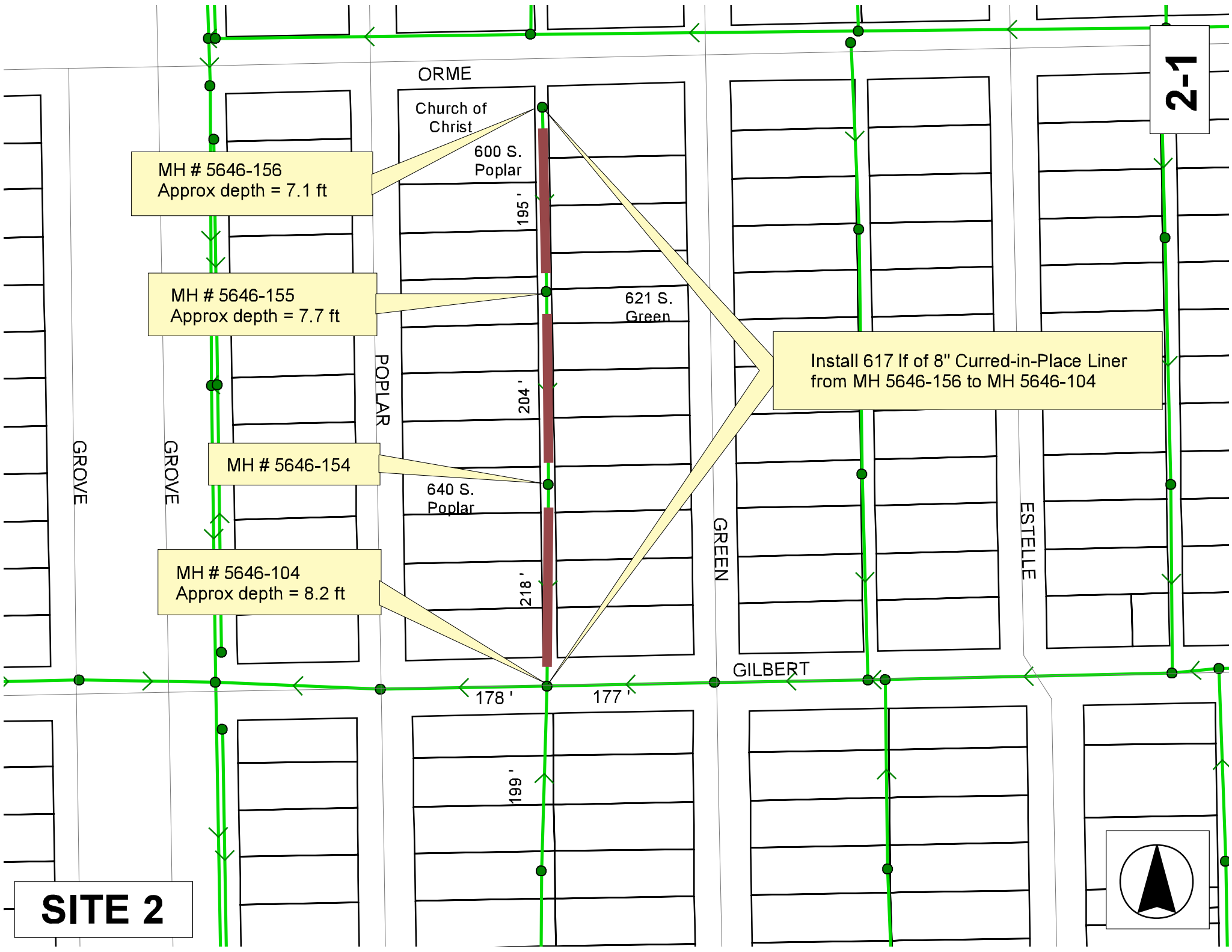
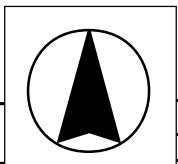
MH # 5646-154

MH # 5646-104
Approx depth = 8.2 ft

Install 617 lf of 8" Curred-in-Place Liner
from MH 5646-156 to MH 5646-104

2-1

SITE 2



ORME

Church of Christ

600 S. Poplar

195'

621 S. Green

204'

640 S. Poplar

218'

GREEN

ESTELLE

GILBERT

178'

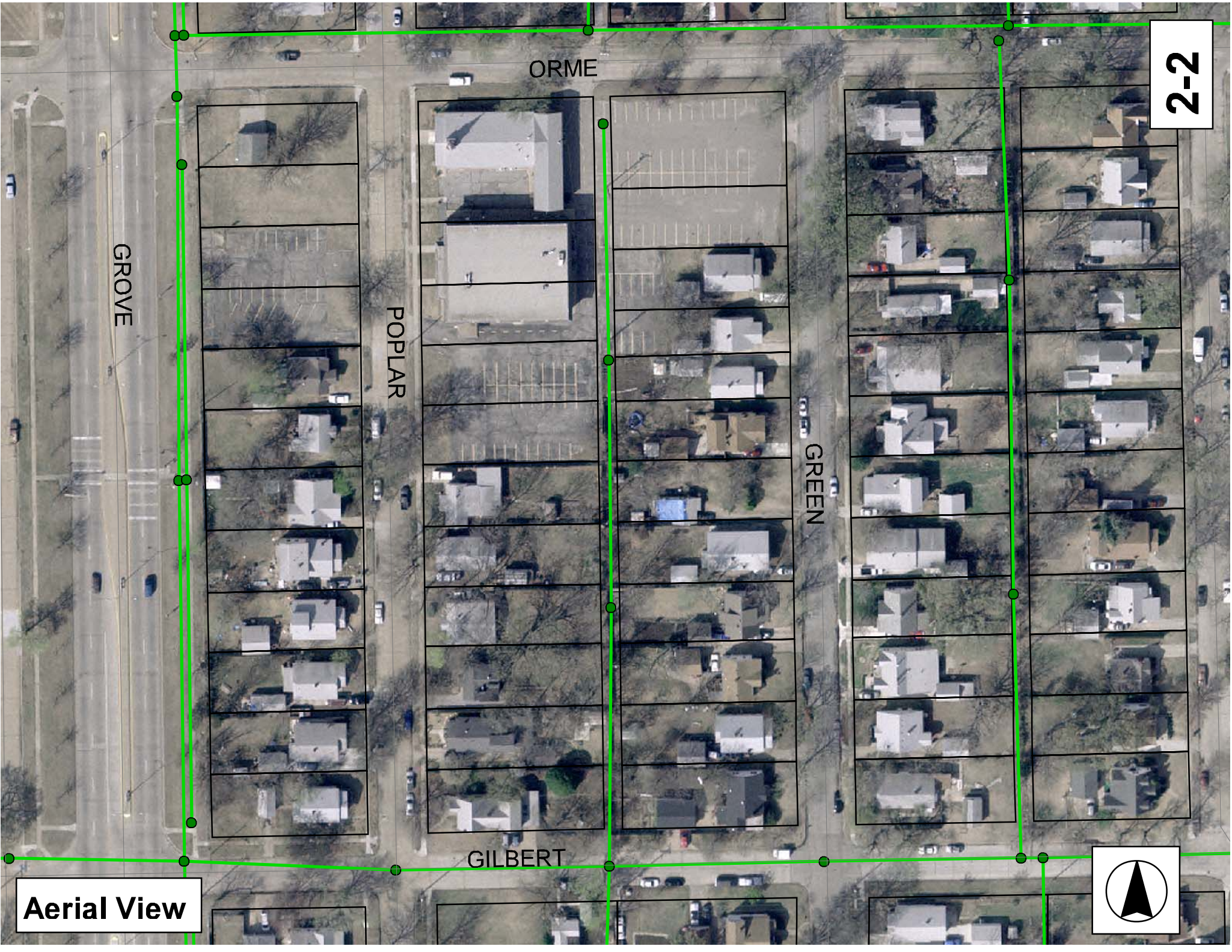
177'

199'

GROVE

GROVE

POPLAR



2-2

GROVE

POPLAR

ORME

GREEN

GILBERT



Aerial View

Television Inspection Master Report

3/20/2007
4:20 PM

US Structure: 5646-156
DS Structure: 5646-155

600 S POPLAR ST
621 S GREEN ST

Date Insp: 8/8/2006
Dir Televised: Upstream To Downstream

Basin: EC01F

Pipe Information

C-018

Shape: Round Length Status: Project No.:
Dia/Ht Width: 8 0 Material: VCP Index:
Length: 194.5 Slope: 0.196 Surface:

Inspection Information

Crew: 694 Percent Full: 0 Tape ID: DVD #0181
Weather: Sunny Purpose: TV Existing Line Counter Start:
Normal Flow

Obs. #	VTR Counter	Distance	Location	Description	Rating	Obsrvd (gpm)	Est. (gpm)	Ratings Struct	Clean	Remain (gpm)
1		0.0	US Manhole	5646-156	1		0.000	0	0	0.000
2		1.0	Crown	Crack-Radial	4		0.000	0	0	0.000
3		6.0		Sealed Off Wye East	1		0.000	0	0	0.000
4		9.0	West	Wye Service	3		0.000	0	0	0.000
5		23.7	East	OFFSET FIRST JOINT INSIDE CONNECTION 600 SOUTH POPLAR Break-In Conn	3		0.000	0	0	0.000
6		31.2	East	APPEARS ABANDON / Not sealed at the main, but faces a parking lot Break-In Conn	3		0.000	0	0	0.000
7		34.0	West	DYE COMING IN FROM CAVITY IN THE PARKING LOT OF 600 SOUTH POPLAR. CONNECTION IS POSSIBLY ABANDON Break-In Conn	3		0.000	0	0	0.000
8		40.5	Upper Right	DYE COMING IN FROM CAVITY IN THE PARKING LOT OF 600 SOUTH POPLAR. THIS CONNECTION IS ABANDON Broken Pipe	3		0.000	0	0	0.000
9		45.6	Upper Left	Crack-Horizontal	2		0.000	0	0	0.000
10		48.1	Upper Left	Crack-Horizontal	3		0.000	0	0	0.000
11		56.8		Sealed Off Wye East	1		0.000	0	0	0.000
12		59.4		Sealed Off Wye West	1		0.000	0	0	0.000
13		81.1	Lower Left	Crack-Radial	3		0.000	0	0	0.000
14		82.0	East	Brean-in-Conn (televisor did not turn to look at this)						
15		83.5	Upper Left	Crack-Radial	3		0.000	0	0	0.000
16		84.7		Sealed Off Wye West	1		0.000	0	0	0.000
17		88.8	Upper Right	Crack-Radial	3		0.000	0	0	0.000
18		93.8	Upper Right	Crack-Horizontal	2		0.000	0	0	0.000
19		98.7		Broken Pipe	3		0.000	0	0	0.000
20		107.5	East	Wye Service	4		0.000	0	0	0.000
21		110.2	West	OFFSET & CAVITY 615 SOUTH GREEN Wye Service	1		0.000	0	0	0.000
22		111.5	Upper Left	APPEARS ABANDON 600 SOUTH POPLAR / Not sealed at the main Broken Pipe	3		0.000	0	0	0.000
23		113.8	Upper Left	Broken Pipe	3		0.000	0	0	0.000
24		126.9	Upper Right	Broken Pipe	3		0.000	0	0	0.000
25		133.0		Sealed Off Wye East	1		0.000	0	0	0.000
26		135.7	West	Break-In Conn	1		0.000	0	0	0.000

600 SOUTH POPLAR (this one was not dye tested)

2-3

Television Inspection Master Report

3/20/2007
4:20 PM

US Structure: 5646-156 600 S POPLAR ST **Date Insp:** 8/8/2006 **Basin:** EC01F
DS Structure: 5646-155 621 S GREEN ST **Dir Televised:** Upstream To Downstream

26	141.8	Upper Right	Broken Pipe	4	0.000	0	0	0.000
27	162.2	Lower Right	Broken Pipe	3	0.000	0	0	0.000
28	169.8	Upper Left	Crack-Horizontal	2	0.000	0	0	0.000
29	170.7	East	Break-In Conn	1	0.000	0	0	0.000
619 SOUTH GREEN								
30	180.0	Lower Left	Crack-Radial	3	0.000	0	0	0.000
31	183.6		Sealed Off Wye East	1	0.000	0	0	0.000
32	185.1	Upper Right	Crack-Horizontal	3	0.000	0	0	0.000
33	186.4		Sealed Off Wye West	1	0.000	0	0	0.000
34	188.2	Lower Right	Crack-Horizontal	2	0.000	0	0	0.000
35	190.3	Lower Right	Crack-Horizontal	2	0.000	0	0	0.000
36	192.8	Invert	Broken Pipe	4	0.000	0	0	0.000
37	193.3	DS Manhole	5646-155	1	0.000	0	0	0.000

175' to 192' is a sag, but not bad enough to repair. OK to line the pipe.

Television Inspection Master Report

3/20/2007
4:20 PM

US Structure: 5646-155 621 S GREEN ST Date Insp: 8/8/2006 Basin: EC01F
DS Structure: 5646-154 640 S POPLAR ST Dir Televised: Downstream To Upstream

Pipe Information

Shape: Round Length Status: Project No.: C-018
Dia/Ht Width: 8 0 Material: VCP Index:
Length: 204.5 Slope: 0.201 Surface:

Inspection Information

Crew: 694 Percent Full: Tape ID: DVD #0181
Weather: Sunny Purpose: TV Existing Line Counter Start:
Surface Cond: Flow: Normal Flow Counter Stop:

Obs. #	VTR Counter	Distance	Location	Description	Rating	Obsrvd (gpm)	Est. (gpm)	Ratings Struct	Clean	Remain (gpm)
1		0.0	DS Manhole	5646-154 / TELEVISIONING AGAINST THE FLOW						
2		6.7	Upper Left	Crack-Radial	3		0.000	0	0	0.000
3		12.2	Lower Left	Crack-Radial	3		0.000	0	0	0.000
4		14.1		Sealed Off Wye West	1		0.000	0	0	0.000
5		17.0		Sealed Off Wye East	1		0.000	0	0	0.000
6		22.2	Lower Left	Crack-Radial	3		0.000	0	0	0.000
7		27.0	Lower Left	Crack-Radial	3		0.000	0	0	0.000
8		29.8	Upper Right	Crack-Horizontal	3		0.000	0	0	0.000
9		39.1	West	Wye Service	4		0.000	0	0	0.000
ROOTS / 636 SOUTH POPLAR										
10		42.1		Sealed Off Wye East	1		0.000	0	0	0.000
11		45.0	Upper Right	Crack-Radial	3		0.000	0	0	0.000
12		55.1	Joint	Roots	3		0.008	5	8	0.008
13		55.9	Upper Right	Broken Pipe	4		0.000	0	0	0.000
14		56.4	East	Break-In Conn	1		0.000	0	0	0.000
637 SOUTH GREEN (not dye tested)										
15		57.6	Lower Left	Crack-Radial	4		0.000	0	0	0.000
16		62.4	Invert	Crack-Radial	4		0.000	0	0	0.000
17		64.8		Sealed Off Wye West	1		0.000	0	0	0.000
18		67.2	East	Wye Service	4		0.000	0	0	0.000
ROOTS / 633 SOUTH GREEN (dye tested positive tap)										
19		75.2	Joint	Roots	3		0.008	5	8	0.008
20		89.4	West	Wye Service	5		0.000	0	0	0.000
632 SOUTH POPLAR / FULL OF ROOTS										
21		90.7	Upper Right	Broken Pipe	4		0.000	0	0	0.000
22		93.0		Sealed Off Wye East	3		0.003	0	0	0.003
DEBRIS AND ROOTS										
23		100.8	Joint	Roots	2		0.004	2	4	0.004
24		106.0	Joint	Roots	3		0.008	5	8	0.008
25		108.5	Joint	Roots	3		0.008	5	8	0.008
26		113.4	Joint	Roots	3		0.008	5	8	0.008
27		115.4		Sealed Off Wye West	1		0.000	0	0	0.000
28		116.3	Joint	Roots	3		0.008	5	8	0.008
29		118.3		Sealed Off Wye East	1		0.000	0	0	0.000
30		118.8	Joint	Roots	3		0.008	5	8	0.008

2-5

Television Inspection Master Report

3/20/2007
4:20 PM

US Structure: 5646-155 621 S GREEN ST Date Insp: 8/8/2006 Basin: EC01F
DS Structure: 5646-154 640 S POPLAR ST Dir Televised: Downstream To Upstream

31	120.9	Joint	Roots	3	0.008	5	8	0.008
----	-------	-------	-------	---	-------	---	---	-------

NOTE: FROM 125' NORTH OF MH 5646-154 TO MH 5646-155 HAS BEEN REPLACED "BY OTHERS"

32	131.2	Upper Left	Crack-Horizontal	4	0.000	0	0	0.000
33	131.3	Crown	Crack-Horizontal	4	0.000	0	0	0.000
34	134.3	Lower Left	Crack-Horizontal	4	0.000	0	0	0.000
35	136.3	Upper Right	Crack-Horizontal	4	0.000	0	0	0.000
36	141.2	West	Break-In Conn	1	0.000	0	0	0.000

ROOTS 628 SOUTH POPLAR

37	143.5	East	Break-In Conn	4	0.000	0	0	0.000
----	-------	------	---------------	---	-------	---	---	-------

ROOTS / 629 SOUTH GREEN

38	144.2	Joint	Roots	3	0.008	5	8	0.008
39	146.5	Lower Left	Broken Pipe	4	0.000	0	0	0.000
40	148.9	Crown	Broken Pipe	5	0.000	0	0	0.000
41	151.6	Crown	Broken Pipe	5	0.000	0	0	0.000
42	154.2	Crown	Broken Pipe	5	0.000	0	0	0.000
43	156.8	Crown	Broken Pipe	4	0.000	0	0	0.000
44	158.9	Crown	Broken Pipe	4	0.000	0	0	0.000
45	161.9	Lower Left	Broken Pipe	4	0.000	0	0	0.000
46	164.2	Crown	Broken Pipe	4	0.000	0	0	0.000
47	166.2		Sealed Off Wye West	1	0.000	0	0	0.000
48	166.8	Crown	Broken Pipe	4	0.000	0	0	0.000
49	168.8	Crown	Other	5	0.000	0	0	0.000

BAD CAVITY

50	168.9	East	Break-In Conn	5	0.000	0	0	0.000
----	-------	------	---------------	---	-------	---	---	-------

BAD CAVITY AROUND OUTSIDE OF CONNECTION / 621 SOUTH GREEN

51	169.4	Crown	Broken Pipe	4	0.000	0	0	0.000
52	174.3	Upper Left	Crack-Radial	3	0.000	0	0	0.000
53	179.8	Lower Left	Crack-Horizontal	3	0.000	0	0	0.000
54	182.1	Lower Left	Crack-Horizontal	4	0.000	0	0	0.000
55	184.3	Upper Left	Broken Pipe	3	0.000	0	0	0.000
56	191.6		Sealed Off Wye West	1	0.000	0	0	0.000
57	194.3		Sealed Off Wye East	1	0.000	0	0	0.000
58	197.0	Upper Left	Crack-Radial	3	0.000	0	0	0.000
59	202.5	Invert Broken	Collapsed Pipe	4	0.000	0	0	0.000
60	202.7	West	Break-In Conn	4	0.000	0	0	0.000

BROKEN PIPE PIECES MISSING AROUND CONNECTION 600 SOUTH POPLAR

61	203.5	US Manhole 5646-155		1	0.000	0	0	0.000
----	-------	---------------------	--	---	-------	---	---	-------

Television Inspection Master Report

3/20/2007
4:20 PM

US Structure: 5646-154 640 S POPLAR ST Date Insp: 8/8/2006 Basin: EC01F
DS Structure: 5646-104 701 S GREEN ST Dir Televised: Downstream To Upstream

Pipe Information

Shape: Round Length Status: Project No.: C-018
Dia/Ht Width: 8 Material: VCP Index:
Length: 218.0 Slope: 0.202 Surface:
Pipe Sec Length: Comment: POINT REPAIR BY SEWER MAINTENANCE FROM 29' TO 35' NORTH OF MH 5646-104.
WORK COMPLETED 01-10-2007 TGC ##### POINT REPAIR FROM 211' TO 215' NORTH
OF MH 104. WORK COMPLETED 01-11-2007 TGC #####

Inspection Information

Crew: 694 Percent Full: Tape ID: DVD #0181
Weather: Sunny Purpose: TV Existing Line Counter Start:
Surface Cond: Flow: Normal Flow Counter Stop:

Obs. #	VTR	Counter	Distance	Location	Description	Rating	Obsrvd (gpm)	Est. (gpm)	Ratings		
									Struct	Clean	Remain (gpm)
1			0.0	DS Manhole	5646-104 / TELEVISIONING AGAINST THE FLOW						
2			0.0	Upper Right	Broken Pipe	3	0.000		0	0	0.000
3			6.0	Upper Right	Broken Pipe	3	0.000		0	0	0.000
4			9.4	Upper Right	Crack-Radial	4	0.000		0	0	0.000
5			11.3	Upper Right	Crack-Horizontal	3	0.000		0	0	0.000
6			16.6	Upper Left	Crack-Radial	4	0.000		0	0	0.000
7			19.3	Upper Left	Crack-Radial	3	0.000		0	0	0.000
8			24.4	Lower Left	Crack-Radial	3	0.000		0	0	0.000
10			31.7	West	Break-In Conn	4					
					TAP REPLACED "BY OTHERS"						
					ROOTS AND BROKEN PIPE AROUND OUTSIDE OF CONNECTION						
11			33.8	Sealed Off Wye East	654 SOUTH POPLAR (NOW PVC CONNECTION)	3	0.003		0	0	0.003
					DEBRIS						
12			36.9	Joint	Roots	3	0.008		5	8	0.008
13			39.3	Joint	Roots	3	0.008		5	8	0.008
14			39.4	Lower Left	Crack-Radial	3	0.000		0	0	0.000
15			41.9	Upper Left	Crack-Radial	3	0.000		0	0	0.000
16			42.0	Joint	Roots	3	0.008		5	8	0.008
17			44.5	Joint	Roots / Heavy	4	0.010		10	25	0.010
18			46.3	Joint	Roots	3	0.008		5	8	0.008
19			49.3	Joint	Roots	3	0.008		5	8	0.008
20			52.2	Joint	Roots	3	0.008		5	8	0.008
21			54.7	Lower Left	Crack-Radial	4	0.000		0	0	0.000
22			56.7		Sealed Off Wye West	1	0.000		0	0	0.000
23			57.2	Joint	Roots	3	0.008		5	8	0.008
24			59.3	East	Wye Service	4	0.000		0	0	0.000
					ROOTS & CAVITY INSIDE CONNECTION / 657 SOUTH GREEN						
25			67.3	Joint	Roots	2	0.004		2	4	0.004
26			72.5	Joint	Roots	2	0.004		2	4	0.004
27			75.3	Joint	Roots	3	0.008		5	8	0.008
28			77.3	Joint	Roots	3	0.008		5	8	0.008
29			82.3		Sealed Off Wye West	3	0.003		0	0	0.003
					DEBRIS						

Television Inspection Master Report

3/20/2007
4:20 PM

US Structure: 5646-154 640 S POPLAR ST Date Insp: 8/8/2006 Basin: EC01F
DS Structure: 5646-104 701 S GREEN ST Dir Televised: Downstream To Upstream

30	84.8		Sealed Off Wye East	1	0.000	0	0	0.000
31	87.8	Upper Left	Broken Pipe	3	0.000	0	0	0.000
32	95.3	Upper Left	Crack-Radial	3	0.000	0	0	0.000
33	97.4	Lower Left	Crack-Radial	3	0.000	0	0	0.000
34	100.6	Upper Right	Crack-Radial	4	0.000	0	0	0.000
35	107.3	West	Wye Service	4	0.000	0	0	0.000
ROOTS / 650 SOUTH POPLAR								
36	110.5	East	Break-In Conn	2	0.000	0	0	0.000
ROOTS 655 SOUTH GREEN								
37	118.0	Lower Right	Broken Pipe	3	0.000	0	0	0.000
38	120.7	Upper Right	Crack-Radial	3	0.000	0	0	0.000
39	123.3	Lower Left	Crack-Radial	4	0.000	0	0	0.000
40	128.7	Lower Left	Crack-Radial	3	0.000	0	0	0.000
41	133.0		Sealed Off Wye West	1	0.000	0	0	0.000
42	135.3	East	Wye Service	3	0.000	0	0	0.000
ROOTS / 647 SOUTH GREEN								
43	158.1	West	Wye Service	1	0.000	0	0	0.000
644 SOUTH POPLAR								
44	161.2		Sealed Off Wye East	1	0.000	0	0	0.000
45	169.1	Upper Left	Crack-Radial	3	0.000	0	0	0.000
46	171.3	Upper Left	Crack-Radial	3	0.000	0	0	0.000
47	174.3	Upper Right	Broken Pipe	3	0.000	0	0	0.000
48	174.6	Upper Left	Crack-Radial	3	0.000	0	0	0.000
49	176.7	Upper Right	Crack-Radial	3	0.000	0	0	0.000
50	184.0	Upper Left	Crack-Radial	3	0.000	0	0	0.000
	184.0	West	Wye Service Sealed Off					
51	186.3		Sealed Off Wye East	1	0.000	0	0	0.000
52	188.9	Upper Left	Crack-Radial	3	0.000	0	0	0.000
53	201.7	Lower Left	Broken Pipe	3	0.000	0	0	0.000
54	209.0	West	Wye Service	3	0.000	0	0	0.000
ROOTS / 640 SOUTH POPLAR								
55	211.5	East	Wye Service	5				
BAD CAVITY INSIDE CONNECTION / 639 SOUTH GREEN (NOW PVC CONNECTION)								
56	214.6	Upper Left	Crack-Radial	3	0.000	0	0	0.000
57	217.3	Lower Left	Crack-Radial	4	0.000	0	0	0.000
	219.0	US Manhole	5646-154					