

4-1

HARRY

1600 S.
Woodlawn

MH # 5945-042
Approx depth = 10.0 ft

MH # 5945-041
Approx depth = 12.4 ft

MH # 5945-040
Approx depth = 13.6 ft

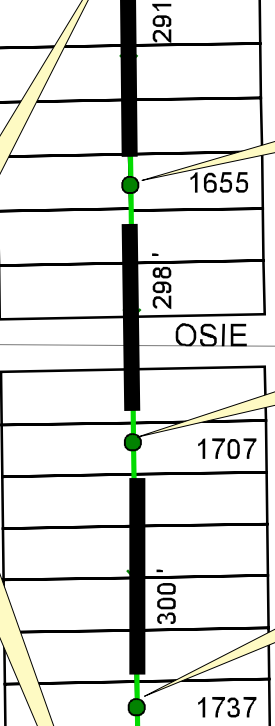
MH # 5945-039
Approx depth = 10.9 ft

MH # 5945-016
Approx pipe depth = 10.4 ft
Approx MH depth = 18.4 ft

Install 1186 lf of 8" Cured-in-Place Liner
from MH 5945-042 to MH 5945-016

WOODLAWN

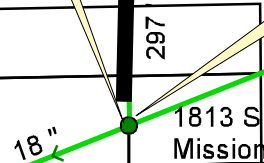
MISSION



FABRIQUE

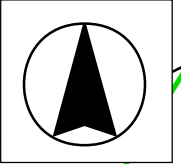
WINDSOR

FUNSTON



360'

SITE 4



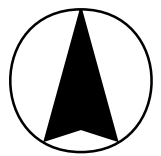
HARRY

WOODLAWN

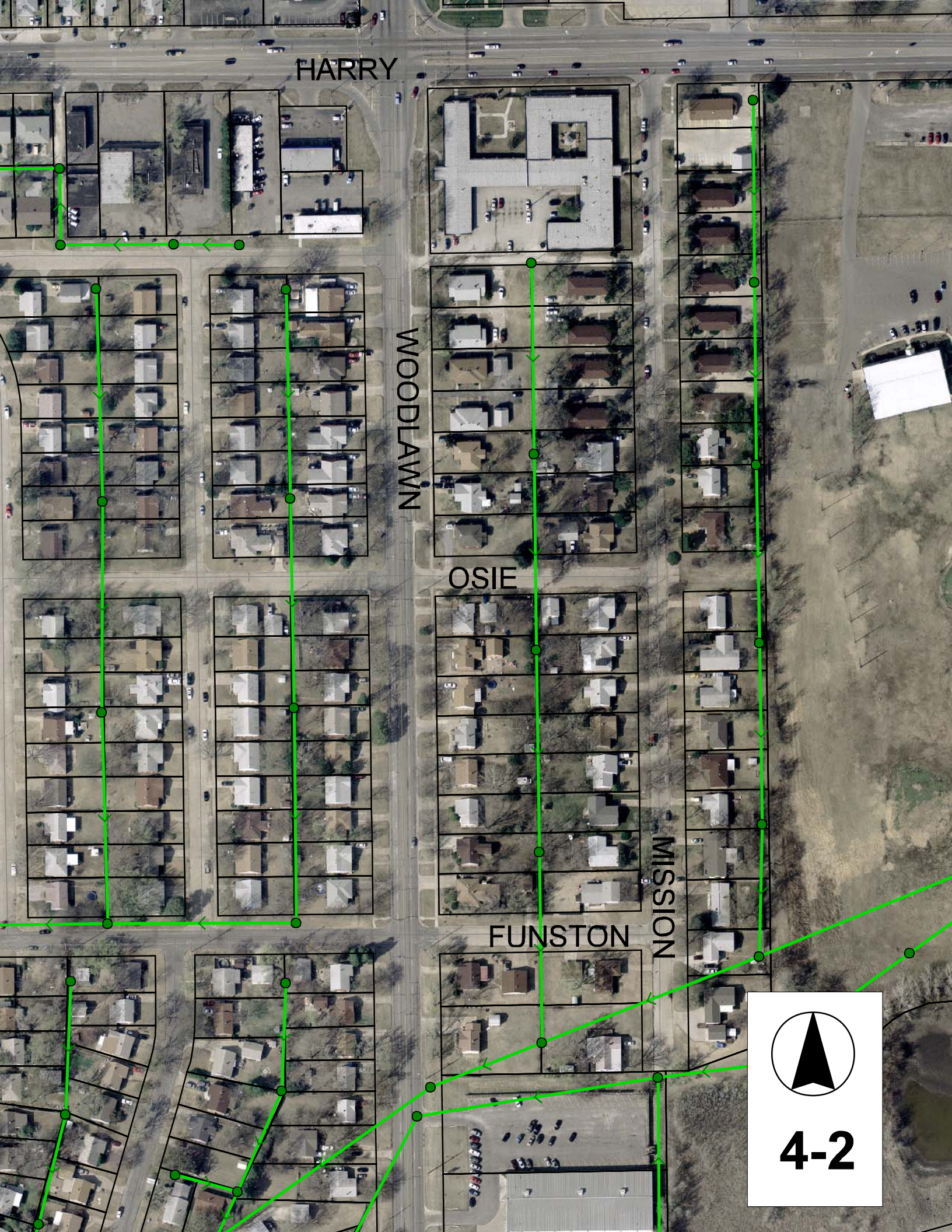
OSIE

FUNSTON

MISSION



4-2



Television Inspection Master Report

5/29/2007
3:03 PM

US Structure: 5945-042 1600 S WOODLAWN BLVD Date Insp: 9/13/2006 Basin: E01B1
DS Structure: 5945-041 1655 S MISSION RD Dir Televised: Upstream To Downstream

Pipe Information

Shape: Round Length Status: VCP Project No.: G-129
Dia/Ht Width: 8 Material: Index:
Length: 291.0 Slope: 0.399 Surface:
Pipe Sec Length: Comment: WYE SEALED OFF BY SEWER MAINTENANCE AT 238' SOUTH OF #042. CONNECTION IS BEHIND 1650 S WOODLAWN AND NOT ACTIVE. WORK COMPLETED 06-27-2002
TGC #####

Inspection Information

Crew: 690 Percent Full: 15 Tape ID: DVD #0193
Weather: Sunny Purpose: TV Existing Line Counter Start:

Obs. #	VTR Counter	Distance	Location	Description	Rating	Obsrvd (gpm)	Est. (gpm)	Ratings		
								Struct	Clean	Remain (gpm)
1		0.0	US Manhole	5945-042	3	0.000	0	0	0.000	
				LOTS OF ROOTS IN THIS MANHOLE TWO 4" CONNETIONS FOR 1600 SOUTH WOODLAWN.						
2		0.5	Upper Left	Crack-Radial	4	0.000	0	0	0.000	
3		0.9	Joint	Roots	2	0.004	2	4	0.004	
4		8.5	Joint	Roots	3	0.008	5	8	0.008	
6		48.8	West	Wye Service	4	0.000	0	0	0.000	
				1630 SOUTH WOODLAWN / full of roots						
7		50.7	East	Wye Service	2	0.000	0	0	0.000	
				1621 SOUTH MISSION / full of roots						
8		51.9	East	Wye Service	4	0.000	0	0	0.000	
				1621 SOUTH MISSION						
9		64.8	Joint	Roots	3	0.008	5	8	0.008	
10		107.6	West	Wye Service	2	0.000	0	0	0.000	
				1636 SOUTH WOODLAWN / roots inside						
11		109.8	Joint	Roots	3	0.008	5	8	0.008	
12		110.2	East	Break-In Conn	1	0.000	0	0	0.000	
				1629 SOUTH MISSION / PVC						
13		166.5	Joint	Roots	3	0.008	5	8	0.008	
14		173.3	West	Wye Service	1	0.000	0	0	0.000	
				1642 SOUTH WOOD LAWN						
15		176.2	East	Wye Service	2	0.000	0	0	0.000	
				1637 SOUTH MISSION						
16		205.5	Joint	Offset	3	0.000	0	0	0.000	
17		236.0	East	Break-In Conn	3	0.000	0	0	0.000	
				1645 SOUTH MISSION / slightly protruding / roots inside						
18		236.0	West	Wye Service	1	0.000	0	0	0.000	
				POSSIBLY SEALED OFF / ball of roots here						
19		239.1	East	Wye Service	2	0.000	0	0	0.000	
				SEALED OFF						
20		246.0	Upper Left	Crack-Horizontal	3	0.000	0	0	0.000	
21		247.4	Joint	Roots	3	0.008	5	8	0.008	
22		248.0	West	Break-In Conn	2	0.000	0	0	0.000	
				1645 SOUTH MISSION / PVC with roots around the tap						
23		259.4	Joint	Offset	2	0.000	0	0	0.000	
24		268.7	Joint	Roots	3	0.008	5	8	0.008	
25		269.0	Upper Left	Crack-Horizontal	3	0.000	0	0	0.000	
26		283.0	Joint	Roots	3	0.008	5	8	0.008	
27		288.3	DS Manhole	5945-041						

4-3

Television Inspection Master Report

5/29/2007
3:03 PM

US Structure: 5945-041
DS Structure: 5945-040

1655 S MISSION RD
1707 S MISSION RD

Date Insp: 9/14/2006
Dir Televised: Upstream To Downstream

Basin: E01B1

Pipe Information

Shape: Round Length Status: Project No.: G-129
Dia/Ht Width: 8 0 Material: VCP Index:
Length: 298.3 Slope: 0.403 Surface:

Inspection Information

Crew: 690 Percent Full: 15 Tape ID: DVD #0193
Weather: Sunny Purpose: TV Existing Line Counter Start:
Surface Cond: Trees, Fences, Buildings Flow: Normal Flow Counter Stop:

Obs. #	VTR Counter	Distance	Location	Description	Rating	Obsrvd (gpm)	Est. (gpm)	Ratings		
								Struct	Clean	Remain (gpm)
1		0.0	US Manhole	5945-041	2		0.000	0	0	0.000
			ROOTS NEEDS TO BE REMOVED							
2		1.6	Joint	Roots	3		0.008	5	8	0.008
3		4.5	Joint	Roots	3		0.008	5	8	0.008
4		7.5	Joint	Roots	3		0.008	5	8	0.008
5		13.9	Joint	Roots	3		0.008	5	8	0.008
6		14.3	West	Wye Service	3		0.000	0	0	0.000
			1654 SOUTH WOOD LAWN FULL OF ROOTS							
7		16.7	Joint	Roots	3		0.008	5	8	0.008
8		17.3	East	Break-In Conn	2		0.000	0	0	0.000
			1655 SOUTH MISSION / PVC with roots around the tap							
9		22.5	Joint	Offset	3		0.000	0	0	0.000
10		47.1	Upper Left	Crack-Horizontal	3		0.000	0	0	0.000
11		50.8	Lower Left	Crack-Horizontal	3		0.000	0	0	0.000
12		54.3	Crown	Crack-Horizontal	2		0.000	0	0	0.000
13		74.2	West	Wye Service	1		0.000	0	0	0.000
			1660 SOUTH WOOD LAWN							
14		76.9	East	Break-In Conn	3		0.000	0	0	0.000
			1661 SOUTH MISSION							
15		80.4	Upper Left	Crack-Horizontal	2		0.000	0	0	0.000
16		85.1	Crown	Crack-Horizontal	2		0.000	0	0	0.000
17		88.8	Upper Left	Crack-Horizontal	3		0.000	0	0	0.000
18		91.5	Joint	Roots	4		0.010	10	25	0.010
19		94.8	Joint	Roots	2		0.004	2	4	0.004
20		97.6	Joint	Roots	2		0.004	2	4	0.004
21		100.7	Joint	Roots	3		0.008	5	8	0.008
22		103.7	Joint	Roots	3		0.008	5	8	0.008
23		106.7	Joint	Roots	3		0.008	5	8	0.008
24		107.6	Crown	Crack-Horizontal	3		0.000	0	0	0.000
25		109.8	Joint	Roots & Offset Joint	3		0.008	5	8	0.008
26		118.9	Joint	Roots	3		0.008	5	8	0.008
27		122.0	Joint	Roots	3		0.008	5	8	0.008
28		122.9	Crown	Crack-Horizontal	3		0.000	0	0	0.000
29		127.8	Joint	Roots	3		0.008	5	8	0.008
30		130.8	Joint	Roots	3		0.008	5	8	0.008
31		134.4	West	Wye Service	2		0.000	0	0	0.000
			1666 SOUTH WOOD LAWN / FULL OF ROOTS							
32		136.8	Joint	Offset	3		0.000	0	0	0.000
33		137.5	East	Wye Service	1		0.000	0	0	0.000
			1667 SOUTH MISSION							

Television Inspection Master Report

5/29/2007
3:03 PM

US Structure: 5945-041 1655 S MISSION RD Date Insp: 9/14/2006 Basin: E01B1
DS Structure: 5945-040 1707 S MISSION RD Dir Televised: Upstream To Downstream

34	160.7	Joint	Roots	2	0.004	2	4	0.004	
35	163.7	Joint	Roots	2	0.004	2	4	0.004	
36	166.6	Joint	Roots	2	0.004	2	4	0.004	
37	184.8	Joint	Roots	2	0.004	2	4	0.004	
38	224.0	Joint	Offset	3	0.000	0	0	0.000	
39	226.9	Joint	Roots	3	0.008	5	8	0.008	
40	241.5	Upper Left	Grease	3	0.000	0	5	0.000	
41	254.5	West	Wye Service	1	0.000	0	0	0.000	
1704 SOUTH WOOD LAWN									
42	257.5	East	Wye Service	1	0.000	0	0	0.000	
1701 SOUTH MISSION / offset first joint outside of main, with roots									
44	259.8	Joint	Roots	3	0.008	5	8	0.008	
45	262.9	Joint	Roots	3	0.008	5	8	0.008	
46	268.9	Joint	Roots	3	0.008	5	8	0.008	
47	280.8	Joint	Roots	2	0.004	2	4	0.004	
48	287.0	Joint	Offset	3	0.000	0	0	0.000	
49	293.3	DS Manhole		2	0.000	0	0	0.000	

LINE HAS LOTS OF HORIZONTAL CRACKS.
INSIDE DROP MANHOLE

Television Inspection Master Report

5/29/2007
3:03 PM

US Structure: 5945-040
DS Structure: 5945-039

1707 S MISSION RD
1737 S MISSION RD

Date Insp: 9/14/2006
Dir Televised: Upstream To Downstream

Basin: E01B1

Pipe Information

Project No.: G-129 Material: VCP Dia/Ht: 8 Length: 300.4

Pipe Sec Length: Comment: POINT REPAIR BY SEWER MAINTENANCE FROM 37' TO 40' N OF MH 5945-039 AFTER LINE WAS DAMAGED BY A GOOD PLUMBER. WORK COMPLETED 05-16-2006 TGC

Inspection Information

Crew: 690 Percent Full: 10 Tape ID: DVD #0193

Work #	Task	Assigned to	Completed	Comment						
1	Vaporoot	Internal Staff	No	#3 LINE NEEDS TO BE VAPOR ROOTED						
2	Internal Point Repair	Internal Staff		No#3 LINE NEEDS INTERNAL POINT REPAIR AT 292' TO REPAIR BROKEN PIPE						
Obs. #	VTR Counter	Distance	Location	Description	Rating	Obsrvd (gpm)	Est. (gpm)	Ratings Struct	Clean	Remain (gpm)
1		2.1	US Manhole	5945-040	1		0.000	0	0	0.000
2		22.5	West	Wye Service	1		0.000	0	0	0.000
1708 SOUTH WOOD LAWN										
3		24.7	Joint	Roots	3		0.008	5	8	0.008
4		26.3	East	Wye Service	2		0.000	0	0	0.000
1707 SOUTH MISSION CONNECTION CRACKED										
5		69.0	Upper Left	Crack-Horizontal	2		0.000	0	0	0.000
6		83.5	West	Break-In Conn	5		0.000	0	0	0.000
1714 SOUTH WOOD LAWN / BOOT LEG CONNECTION / PVC										
7		85.9	Upper Left	Crack-Horizontal	2		0.000	0	0	0.000
8		85.9	North	Wye Service	1		0.000	0	0	0.000
1713 SOUTH MISSION										
9		125.6	Upper Left	Broken Pipe	4		0.000	0	0	0.000
10		127.6	Joint	Roots	3		0.008	5	8	0.008
11		128.8	Upper Left	Crack-Horizontal	3		0.000	0	0	0.000
12		143.6	West	Wye Service	1		0.000	0	0	0.000
1720 SOUTH WOOD LAWN										
13		146.4	East	Wye Service	2		0.000	0	0	0.000
1719 SOUTH MISSION ROOTS										
14		148.6	Joint	Roots	3		0.008	5	8	0.008
15		163.1	Joint	Roots	3		0.008	5	8	0.008
16		164.3	Upper Left	Crack-Horizontal	2		0.000	0	0	0.000
17		169.5	Joint	Roots	3		0.008	5	8	0.008
18		170.4	Upper Left	Crack-Horizontal	3		0.000	0	0	0.000
19		172.5	Joint	Roots	2		0.004	2	4	0.004
20		202.0	Joint	Roots	3		0.008	5	8	0.008
21		202.6	West	Break-In Conn	2		0.000	0	0	0.000
1726 SOUTH WOOD LAWN roots around PVC tap										
22		205.8	East	Break-In Conn	1		0.000	0	0	0.000
1725 SOUTH MISSION / PVC										
23		258.5		PVC PIPE STARTS						
24		259.7	West	Break-In Conn	1		0.000	0	0	0.000
1732 SOUTH WOOD LAWN / PVC										
25		260.6		PVC PIPE ENDS						
26		262.3	East	Wye Service	1		0.000	0	0	0.000
1731 SOUTH MISSION										
27		270.2	Upper Left	Crack-Horizontal	2		0.000	0	0	0.000
28		278.4	Upper Left	Crack-Horizontal	3		0.000	0	0	0.000
29		292.3		Broken Pipe	4					
30		296.1	DS Manhole	5945-039	2					

4-6

Television Inspection Master Report

5/29/2007
3:03 PM

US Structure: 5945-039 1737 S MISSION RD Date Insp: 9/14/2006 Basin: E01B1
 DS Structure: 5945-016 1813 S MISSION RD Dir Televised: Upstream To Downstream

Pipe Information

Shape: Round Length Status: Project No.: G-129
 Dia/Ht Width: 8 0 Material: VCP Index:
 Length: 297.3 Slope: 0.404 Surface:

Inspection Information

Crew: 690 Percent Full: 15 Tape ID: DVD #0193
 Weather: Sunny Purpose: TV Existing Line Counter Start:
 Surface Cond: Trees, Fences, Buildings Flow: Normal Flow Counter Stop:

Obs. VTR

#	Counter	Distance	Location	Description	Rating	Obsrvd (gpm)	Est. (gpm)	Ratings Struct	Clean	Remain (gpm)
1		0.0	US Manhole	5945-039	1		0.000	0	0	0.000
2		22.4	West	Wye Service	1		0.000	0	0	0.000
1738 SOUTH WOOD LAWN										
3		25.8	East	Wye Service	3		0.000	0	0	0.000
1737 SOUTH MISSION										
4		32.1	Upper Left	Broken Pipe	4		0.000	0	0	0.000
5		34.0	Upper Left	Crack-Horizontal	3		0.000	0	0	0.000
6		50.2	Upper Left	Crack-Horizontal	3		0.000	0	0	0.000
7		55.7	Joint	Roots	3		0.008	5	8	0.008
8		59.0	Crown	Broken Pipe	4		0.000	0	0	0.000
9		76.5	Upper Left	Crack-Horizontal	3		0.000	0	0	0.000
10		80.7	Upper Left	Crack-Horizontal	3		0.000	0	0	0.000
11		83.4	West	Wye Service	1		0.000	0	0	0.000
1744 SOUTH WOOD LAWN										
12		83.4	Upper Left	Crack-Horizontal	3		0.000	0	0	0.000
13		86.4	East	Wye Service	2		0.000	0	0	0.000
6422 EAST FUNSTON, CONNECTION CRACKED ROOTS										
14		86.5	Upper Left	Crack-Horizontal	3		0.000	0	0	0.000
15		218.0	West	Wye Service	1		0.000	0	0	0.000
1802 SOUTH WOOD LAWN										
16		220.8	East	Wye Service	1		0.000	0	0	0.000
1801 SOUTH MISSION										
17		263.4	West	Wye Service	1		0.000	0	0	0.000
1812 SOUTH WOOD LAWN										
18		279.6	Start	Sag begins	4		0.000	10	0	0.000
19		288.5	Upper Right	Debris	5		0.000	0	75	0.000

CAMERA WON'T PASS. THIS IS AT THE DROP MANHOLE. LINE HAS LOTS OF HORIZONTAL CRACKS.

NOTE: THE DOWNSTREAM 10 LF OF PIPE WAS REPLACED "BY OTHERS". PIPE IS READY FOR LINER.

4-7