

5-1

Install 328 lf of 8" Cured-in-Place Liner

Install 336 lf of 8" Cured-in-Place Liner

DOUGLAS

2501 E. Douglas
154'
328'
115 S. Green

2525 E. Douglas

223'

328'

2809 E. Douglas

2823 E. Douglas

336'

328'

116 S. Volutsia

118 S. Erie

MH # 5647-491
Approx depth = 9.2 ft

MH # 5647-493
Approx depth = 9.0 ft

MH # 5647-498
Approx depth = 8.9 ft

MH # 5647-499
Approx depth = 8.8 ft

POPULAR

GREEN

ESTELLE

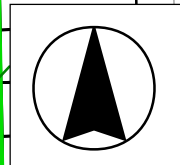
VOLUTSIA

ERIE

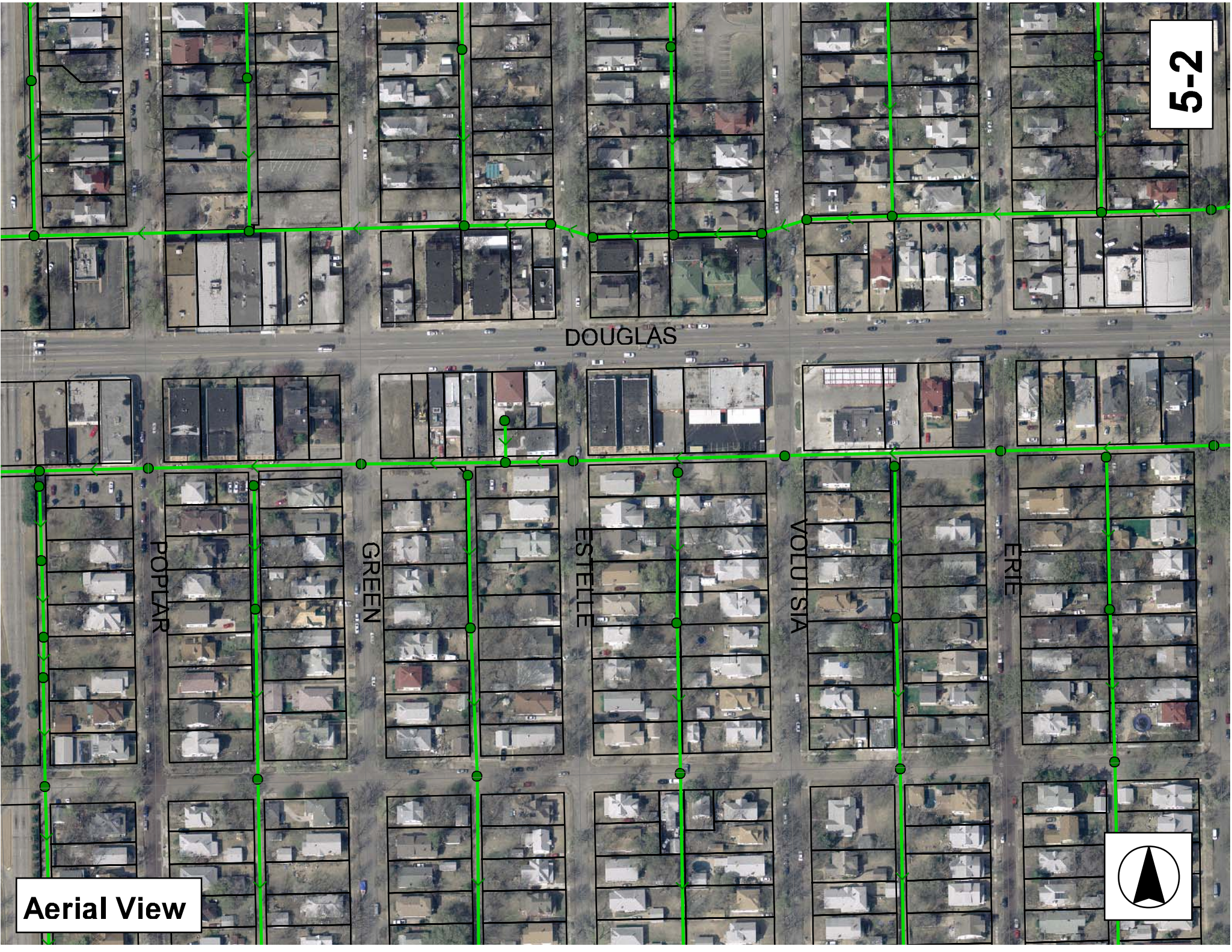
CHAUTAQUA

ENGLISH

SITE 5



5-2



Aerial View



Television Inspection Master Report

6/29/2007
4:04 PM

US Structure: 5647-499 122 S ERIE ST **Date Insp:** 2/19/2004 **Basin:** EC01G
DS Structure: 5647-498 2817 E DOUGLAS AVE **Dir Televised:** Upstream To Downstream

Pipe Information

Shape: Round Length Status: Project No.: C-069
Dia/Ht Width: 8 0 Material: VCP Index:
Length: 336.3 Slope: 0.443 Surface:

Inspection Information

Crew: 694 Percent Full: 10 Tape ID: V-4242
Weather: Sunny Purpose: TV Existing Line Counter Start: 44;54
Surface Cond: N/A Flow: Normal Flow Counter Stop:

Obs. #	VTR Counter	Distance	Location	Description	Rating	Obsrvd (gpm)	Est. (gpm)	Ratings		
								Struct	Clean	Remain (gpm)
1		0.0	US Manhole	5647-499						
2		14.0	Crown	Crack-Horizontal	3		0.004	5	0	0.004
3		22.0	Crown	Crack-Radial	3		0.004	5	0	0.004
4		27.0	Quad 4 / U-Lt	Crack-Horizontal	2		0.002	2	0	0.002
5		27.0	Crown	Crack-Radial	3		0.004	5	0	0.004
6		31.0	Crown	Crack-Radial	3		0.004	5	0	0.004
7		45.0	Quad 1 / U-Rt	Crack-Horizontal	2		0.002	2	0	0.002
8		48.0	North	Pipe Seal	1		0.000	0	0	0.000
9		64.0	Crown	Crack-Radial	3		0.004	5	0	0.004
10		68.0	Crown	Crack-Radial	2		0.002	2	0	0.002
11		74.0	North	Wye Service	1		0.000	0	0	0.000
105 S. DOUGLAS										
12		75.0	Crown	Crack-Radial	2		0.002	2	0	0.002
13		79.0	Crown	Crack-Radial	3		0.004	5	0	0.004
14		84.0	Crown	Crack-Radial	3		0.004	5	0	0.004
15		87.0	Crown	Crack-Radial	3		0.004	5	0	0.004
16		91.0	Quad 3 / L-Lt	Broken Pipe	3		0.010	60	0	0.010
17		96.0	Quad 1 / U-Rt	Crack-Radial	2		0.002	2	0	0.002
18		97.0	Quad 3 / L-Lt	Broken Pipe	3		0.010	60	0	0.010
19		100.0	North	Pipe Seal	1		0.000	0	0	0.000
20		106.0	Quad 3 / L-Lt	Crack-Horizontal	3		0.004	5	0	0.004
21		106.0	Crown	Crack-Radial	3		0.004	5	0	0.004
22		111.0	Crown	Crack-Radial	3		0.004	5	0	0.004
23		112.0	Quad 3 / L-Lt	Crack-Radial	2		0.002	2	0	0.002
24		115.0	Quad 3 / L-Lt	Crack-Radial	3		0.004	5	0	0.004
25		117.0	Crown	Crack-Radial	2		0.002	2	0	0.002
26		123.0	Crown	Crack-Radial	3		0.004	5	0	0.004
27		124.0	North	Wye Service	1		0.000	0	0	0.000
2821 E. DOUGLAS										
28		149.0	Crown	Crack-Horizontal	3		0.004	5	0	0.004
29		149.0	North	Pipe Seal	1		0.000	0	0	0.000

5-3

Television Inspection Master Report

6/29/2007
4:04 PM

US Structure: 5647-499 122 S ERIE ST **Date Insp:** 2/19/2004 **Basin:** EC01G
DS Structure: 5647-498 2817 E DOUGLAS AVE **Dir Televised:** Upstream To Downstream

30	170.0	Crown	Observation Hole						0.000
31	171.0	Crown	Crack-Radial	3	0.004	5	0	0	0.004
32	173.0	Crown	Crack-Radial	3	0.004	5	0	0	0.004
33	178.0	Crown	Crack-Radial	3	0.004	5	0	0	0.004
34	180.0	North	Wye Service	1	0.000	0	0	0	0.000
2815 E. DOUGLAS									
35	199.0	North	Pipe Seal	1	0.000	0	0	0	0.000
36	203.0	Quad 2 / L-Rt	Crack-Radial	1	0.001	1	0	0	0.001
37	209.0	Quad 2 / L-Rt	Crack-Horizontal	3	0.004	5	0	0	0.004
38	215.0	Crown	Crack-Horizontal	1	0.001	1	0	0	0.001
39	219.0	North	Break-In Conn	1	0.001	0	0	0	0.001
2809 E. DOUGLAS									
40	219.0	Quad 2 / L-Rt	Broken Pipe	2	0.008	44	0	0	0.008
41	224.0	Quad 2 / L-Rt	Crack-Horizontal	1	0.001	1	0	0	0.001
42	225.0	North	Pipe Seal	1	0.000	0	0	0	0.000
43	231.0	Crown	Crack-Radial	3	0.004	5	0	0	0.004
44	240.0	Crown	Crack-Radial	2	0.002	2	0	0	0.002
45	250.0	North	Pipe Seal	1	0.000	0	0	0	0.000
46	254.0	North	Break-In Conn	1	0.001	0	0	0	0.001
2809 E. DOUGLAS267									
47	267.0	Crown	Crack-Radial	2	0.002	2	0	0	0.002
48	275.0	Quad 2 / L-Rt	Broken Pipe	5	0.060	100	0	0	0.060
49	290.0	Crown	Crack-Horizontal	3	0.004	5	0	0	0.004
50	292.0	Quad 3 / L-Lt	Crack-Horizontal	2	0.002	2	0	0	0.002
51	297.0	Quad 2 / L-Rt	Broken Pipe	3	0.010	60	0	0	0.010
52	300.0	North	Pipe Seal	1	0.000	0	0	0	0.000
53	311.0	Quad 2 / L-Rt	Broken Pipe	4	0.030	78	0	0	0.030
54	318.0	Quad 2 / L-Rt	Broken Pipe	5	0.060	100	0	0	0.060
55	323.0	Quad 3 / L-Lt	Broken Pipe	4	0.030	78	0	0	0.030
56	325.0	Invert	30% FLOW						
57	336.0	DS Manhole	5647-498						

Television Inspection Master Report

6/29/2007
4:04 PM

US Structure: 5647-493 108 S GREEN ST Date Insp: 6/7/2004 Basin: EC01G
 DS Structure: 5647-491 118 S POPLAR ST Dir Televised: Upstream To Downstream

Pipe Information

Shape: Round Length Status: Project No.: C-063
 Dia/Ht Width: 8 Material: VCP Index:
 Length: 328.5 Slope: 0.350 Surface:

Comment: POINT REPAIR BY SEWER MAINTENANCE FROM 210' TO 216' W. OF MH 493.
 CONNECTION FOR 2503 WAS REPLACED AT 215'. / 12-12-2005 TGC

Inspection Information

Crew: 692 Percent Full: 10 Tape ID: 4389
 Weather: Sunny Purpose: TV Existing Line Counter Start: 0.0
 Surface Cond: N/A Flow: Normal Flow Counter Stop:

Obs. #	VTR Counter	Distance	Location	Description	Rating	Obsrvd (gpm)	Est. (gpm)	Ratings Struct	Clean	Remain (gpm)
1		0.0	US Manhole	5647-493						0.000
2		7.0	Crown	Broken Pipe	2		0.008	44	0	0.008
3		13.0	Quad 1 / U-Rt	Crack-Radial	3		0.004	5	0	0.004
4		18.0	Crown	Broken Pipe	2		0.008	44	0	0.008
5		21.0	Crown	Broken Pipe	2		0.008	44	0	0.008
6		28.0	Crown	Broken Pipe	2		0.008	44	0	0.008
7		41.0	Crown	Broken Pipe	3		0.010	60	0	0.010
8		48.0	North	Wye Service / Sealed Off	1		0.000	0	0	0.000
9		52.0	Crown	Crack-Radial	3		0.004	5	0	0.004
10		54.0	Crown	Broken Pipe	2		0.008	44	0	0.008
11		72.0	Crown	Broken Pipe	2		0.008	44	0	0.008
12		73.0	North	Wye Service	1		0.000	0	0	0.000
2525 E DOUGLAS / debris in service										
13		74.0	Crown	Broken Pipe	2		0.008	44	0	0.008
14		77.0	Crown	Broken Pipe	2		0.008	44	0	0.008
15		84.0	Crown	Broken Pipe	2		0.008	44	0	0.008
16		88.0	Crown	Broken Pipe	2		0.008	44	0	0.008
17		101.0	North	Wye Service / Sealed Off	1		0.000	0	0	0.000
18		107.0	Crown	Crack-Radial						0.000
19		110.0	Crown	Crack-Radial	3		0.004	5	0	0.004
20		125.0	Crown	Crack-Radial	3		0.004	5	0	0.004
21		127.0	North	Wye Service	1		0.000	0	0	0.000
2525 E DOUGLAS										
22		145.0	Crown	Broken Pipe	2		0.008	44	0	0.008
23		147.0	North	Wye Service / Sealed Off	1		0.000	0	0	0.000
24		148.0	Quad 4 / U-Lt	Crack-Radial	3		0.004	5	0	0.004
25		165.0	North	Break-In Conn	1		0.001	0	0	0.001
2505 E DOUGLAS										
26		166.0	Crown	Broken Pipe	2		0.008	44	0	0.008

5-5

Television Inspection Master Report

6/29/2007
4:04 PM

US Structure: 5647-493 108 S GREEN ST Date Insp: 6/7/2004 Basin: EC01G
DS Structure: 5647-491 118 S POPLAR ST Dir Televised: Upstream To Downstream

27	167.0	Crown	Observation Hole	1	0.000	0	0	0.000
28	171.0	Crown	Broken Pipe	2	0.008	44	0	0.008
29	173.0	North	Wye Service	1	0.000	0	0	0.000
2505 E DOUGLAS								
30	183.0	Quad 1 / U-Rt	Broken Pipe	2	0.008	44	0	0.008
31	192.0	North	Wye Service / Sealed Off	1	0.000	0	0	0.000
32	204.0	Crown	Broken Pipe	2	0.008	44	0	0.008
33	213.0	Crown	Broken Pipe	3	0.010	60	0	0.010
34	215.0	North	Wye Service	4	0.000	60	0	0.000
2503 E DOUGLAS --- COLLAPSED / POINT REPAIR DONE BY SEWER MAINTENANCE								
35	216.0	Crown	Broken Pipe	3	0.010	60	0	0.010
36	221.0	North	Break-In Conn	1	0.001	0	0	0.001
2503 E DOUGLAS								
37	232.0	Crown	Crack-Radial	3	0.004	5	0	0.004
38	234.0	Crown	Crack-Radial	3	0.004	5	0	0.004
39	241.0	North	Wye Service / Sealed Off	1	0.000	0	0	0.000
40	245.0	Quad 4 / U-Lt	Crack-Radial	3	0.004	5	0	0.004
41	247.0	Crown	Crack-Radial	3	0.004	5	0	0.004
42	249.0	Quad 4 / U-Lt	Crack-Radial	3	0.004	5	0	0.004
43	254.0	Quad 1 / U-Rt	Crack-Radial	3	0.004	5	0	0.004
44	266.0	North	Wye Service	1	0.000	0	0	0.000
2501 E DOUGLAS								
45	275.0	Crown	Crack-Radial	3	0.004	5	0	0.004
46	279.0	North	Break-In Conn	1	0.001	0	0	0.001
2501 E DOUGLAS								
47	291.0	North	Wye Service / Sealed Off	1	0.000	0	0	0.000
48	295.0	Crown	Broken Pipe	2	0.008	44	0	0.008
49	297.0	Quad 1 / U-Rt	Crack-Radial	3	0.004	5	0	0.004
50	300.0	Quad 1 / U-Rt	Crack-Radial	3	0.004	5	0	0.004
51	307.0	Crown	Broken Pipe	2	0.008	44	0	0.008
52	318.0	Crown	Crack-Radial	3	0.004	5	0	0.004
53	326.0	DS Manhole	5647-491					0.000