

Install 460 lf of 8" Cured-in-Place Liner from MH 5845-378 to MH 5845-362

MH # 5845-378
Approx depth = 13.6 ft

MH # 5845-377
Approx depth = 12.9 ft

MH # 5845-362
Approx depth = 11.8 ft

OLIVER

GLENDALE

LARRY

ELPYCO

PINECREST

OLD MANOR

KINKAID

2143

184'

2159

276'

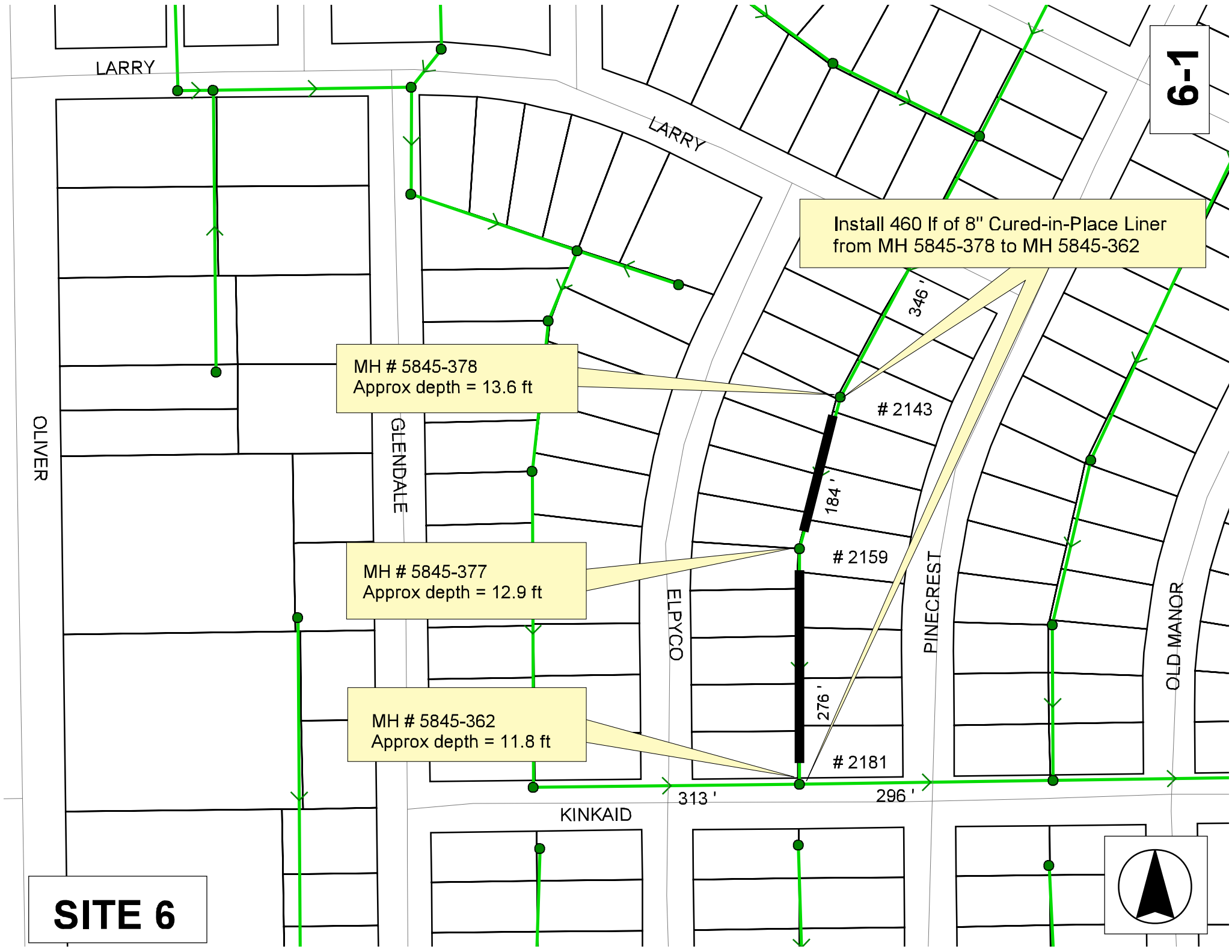
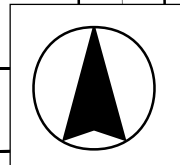
2181

313'

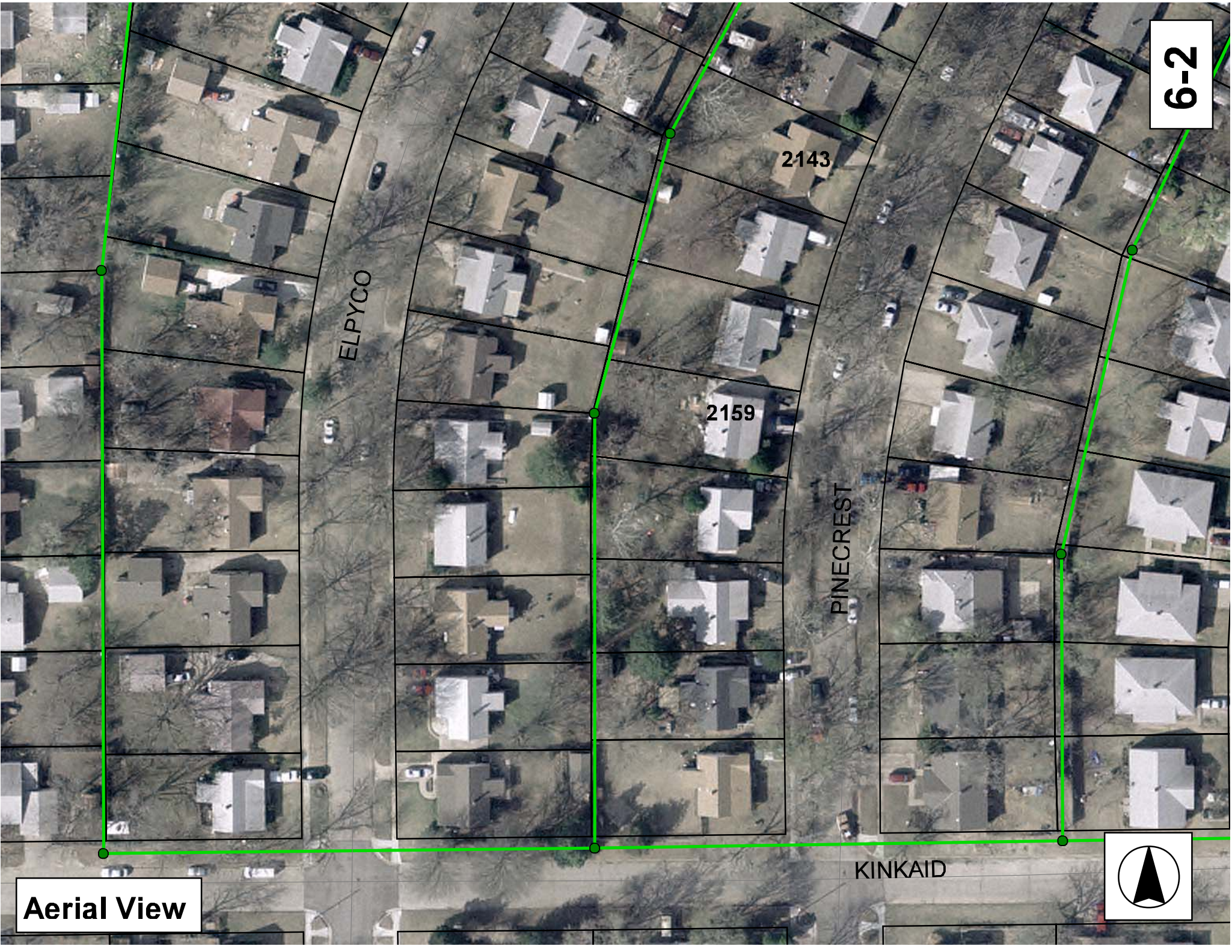
296'

346'

SITE 6



6-2



Aerial View



Television Inspection Master Report

8/22/2007
9:28:48AM

US Manhole: 5845-378 2143 S PINECREST ST Date Insp: 2/2/2007 Basin: E01A
 DS Manhole: 5845-377 2159 S PINECREST ST Dir Televised: Downstream To Upstream

Pipe Information

Shape: Round Length Status: Project No.: F-203
 Dia/Ht Width: 8 0 Material: VCP Index:
 Length: 184.2 Slope: 0.397 Surface: Rear Easement

Inspection Information

Crew: 694 Percent Full: Tape ID: DVD #0243
 Weather: Sunny Purpose: TV Existing Line Counter Start:
 Surface Cond: Trees & Fences Flow: Normal Flow Counter Stop:

Obs. VTR

#	Counter Svc. Address	Distance	Location	Description	Obs Rating	Obsrvd (gpm)	Est. (gpm)	Ratings		
								Connection type:	Struct	Clean
1		0.0	DS Manhole	5845-377	1		0.000	0	0	0.000
2159 SOUTH PINECREST										
				TELEVISIONING AGAINST THE FLOW						
2		5.0	Joint	Offset	3		0.010	20	0	0.010
3		10.0	West	Wye Service	5		0.000	400	0	0.000
2164 SOUTH ELPYCO										
				4" Clay Wye Connection	ROOTS					
4		11.0	Joint	Roots	3		0.008	5	8	0.008
5		19.0	Joint	Roots	3		0.008	5	8	0.008
6		26.0	Joint	Roots	3		0.008	5	8	0.008
7		29.0	Joint	Roots	3		0.008	5	8	0.008
8		32.0	Joint	Roots	3		0.008	5	8	0.008
9		35.0		Grease	3		0.000	0	5	0.000
10		38.7	Joint	Roots	3		0.008	5	8	0.008
11		42.0	Joint	Offset	3		0.010	20	0	0.010
12		45.0	Joint	Roots	3		0.008	5	8	0.008
13		52.0	Joint	Offset	3		0.010	20	0	0.010
14		54.0	East	Wye Service	5		0.000	400	0	0.000
2153 SOUTH PINECREST										
				4" Clay Wye Connection	ROOTS					
15		54.0	Joint	Roots	3		0.008	5	8	0.008
16		57.0	West	Wye Service	5		0.000	400	0	0.000
2158 SOUTH ELPYCO										
				4" Clay Wye Connection	ROOTS					
17		70.0	Joint	Offset	3		0.010	20	0	0.010
18		104.0	West	Break-In Conn	1		0.001	0	0	0.001
2152 SOUTH ELPYCO / PVC										
				4" Predco Saddle						
19		104.0	Joint	Roots	4		0.010	10	25	0.010
20		107.0		Grease	3		0.000	0	5	0.000
21		120.0	East	Break-In Conn	1		0.001	0	0	0.001
2149 SOUTH PINECREST / PVC										
				4" Predco Saddle						
22		136.0	Joint	Offset	3		0.010	20	0	0.010
23		151.0	West	Wye Service	5		0.000	400	0	0.000
2148 SOUTH ELPYCO										
				4" Clay Wye Connection	Full of Roots					
24		169.0		Roots	3		0.008	5	8	0.008
25		173.0	Joint	Roots	3		0.008	5	8	0.008
26		184.0	US Manhole	5845-378	1		0.000	0	0	0.000

Television Inspection Master Report

8/22/2007
9:28:48AM

US Manhole: 5845-377 2159 S PINECREST ST Date Insp: 2/2/2007 Basin: E01A
DS Manhole: 5845-362 2181 S PINECREST ST Dir Televised: Downstream To Upstream

Pipe Information

Shape: Round Project No.: F-203 Dia: 8 Material: VCP Length: 276.2 Slope: 0.402 Surface:Rear Easement

Inspection Information

Crew: 694 Percent Full: Tape ID: DVD #0243

Obs. #	VTR Counter	Distance	Location	Description	Obs Rating	Obsrvd (gpm)	Est. (gpm)	Ratings Struct	Clean	Remain (gpm)
1		0.0	DS Manhole	5845-362	1		0.000	0	0	0.000
2		18.0	East	Wye Service	1		0.000	0	0	0.000
3		21.0	West	Wye Service	1		0.000	0	0	0.000
4		34.0	Joint	Roots	2		0.004	2	4	0.004
5		36.5	Joint	Roots	3		0.008	5	8	0.008
6		42.5	Joint	Roots	4		0.010	10	25	0.010
7		45.7	Joint	Roots	3		0.008	5	8	0.008
8		49.0	Joint	Roots	3		0.008	5	8	0.008
9		52.0	Joint	Roots	3		0.008	5	8	0.008
10		53.0		Grease	3		0.000	0	5	0.000
11		64.0	Joint	Roots	3		0.008	5	8	0.008
12		65.0		Grease	3		0.000	0	5	0.000
13		68.0	Joint	Roots	3		0.008	5	8	0.008
14		71.0		Grease	4		0.000	0	10	0.000
15		77.0	East	Break-In Conn	1		0.001	0	0	0.001
16		78.0		Grease	4		0.000	0	10	0.000
17		80.0	West	Wye Service	1		0.000	0	0	0.000
18		81.0		Grease	4		0.000	0	10	0.000
19		84.0		Grease	3		0.000	0	5	0.000
20		90.0	Joint	Roots	3		0.008	5	8	0.008
21		99.0		Grease	3		0.000	0	5	0.000
22		102.0	Joint	Roots	3		0.008	5	8	0.008
23		134.0	East	Wye Service	5		0.000	400	0	0.000
24		136.0	West	Wye Service	3		0.000	2	0	0.000
25		158.0		Grease	3		0.000	0	5	0.000
26		165.0		Grease	3		0.000	0	5	0.000
27		186.0	West	Wye Service	4		0.000	60	0	0.000
28		196.0	East	Wye Service	5		0.000	400	0	0.000
29		242.0	West	Wye Service	4		0.000	60	0	0.000
30		248.0	Joint	Roots	3		0.008	5	8	0.008
31		254.0	Joint	Roots	3		0.008	5	8	0.008
32		261.0	East	Wye Service	5		0.000	400	0	0.000
33		276.0	US Manhole	5845-377	1		0.000	0	0	0.000