

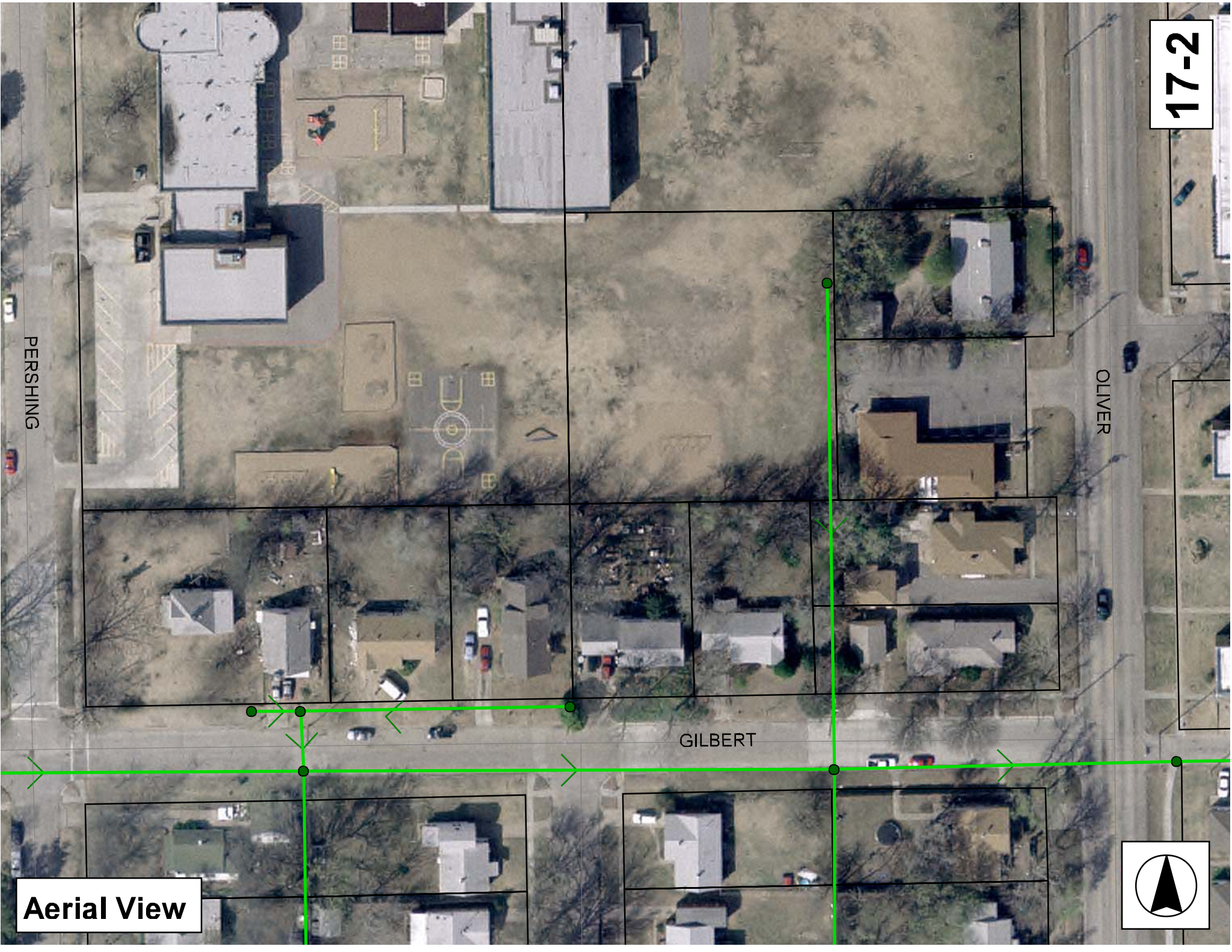
17-2

PERSHING

OLIVER

GILBERT

Aerial View



Television Inspection Master Report

9/10/2007
9:55:31AM

US Manhole: 5746-483 633 S OLIVER AV Date Insp: 4/13/2007 Basin: E04C
DS Manhole: 5746-422 702 DELLROSE AV Dir Televised: Downstream to Upstream

Pipe Information

Shape: Round Length Status: Project No.: F-214
Dia/Ht Width: 8 0 Material: VCP Index:
Length: 300.7 Slope: 0.399 Surface: Rear Easement

Inspection Information

Crew: 694 Percent Full: Tape ID: DVD #0270
Weather: Rainy Purpose: TV Existing Line Counter Start:
Surface Cond: Trees & Fences Flow: Normal Flow Counter Stop:

Obs. VTR

#	Counter Svc. Address	Distance	Location	Connection type:	Description	Obs Rating	Obsrvd (gpm)	Est. (gpm)	Ratings Struct	Clean	Remain (gpm)
1		0.1	DS Manhole	5746-422 /	4712 EAST GILBERT /						
2		27.1	Joint		Offset	3		0.010	20	0	0.010
3		54.0			Sealed Off Wye East	1		0.000	0	0	0.000
					4" Clay Wye Connection						
4		75.2	East		Break-In Conn	1		0.001	0	0	0.001
					4" Break In Connection						
5		121.7			Sealed Off Wye East	5		0.005	0	0	0.005
					4" Clay Wye Connection						
					FULL OF ROOTS / POSSIBLY SEALED OFF						
6		124.5	East		Break-In Conn	4		0.008	60	0	0.008
					4" Break In Connection						
					ROOTS						
7		153.5	Joint		Offset	3		0.010	20	0	0.010
8		159.5	Joint		Offset	3		0.010	20	0	0.010
9		177.3	East		Wye Service	1		0.000	0	0	0.000
					4" Clay Wye Connection						
10		232.7			Sealed Off Wye East	1		0.000	0	0	0.000
					4" Clay Wye Connection						
11		269.5	Joint		Roots	2		0.004	2	4	0.004
12		282.0	East		Wye Service	1		0.000	0	0	0.000
					4" Clay Wye Connection						
					635 SOUTH OLIVER						
13		282.4	Joint		Roots	4		0.010	10	25	0.010
14		285.4	Joint		Roots	3		0.008	5	8	0.008
15		287.8			Sealed Off Wye West	5		0.005	0	0	0.005
					6" Clay Wye Connection						
					PACKED WITH ROOTS / POSSIBLY SEALED OFF						
16		291.2	Joint		Roots	3		0.008	5	8	0.008
17		301.5	US Manhole	5746-483		1		0.000	0	0	0.000

INFILTRATION COMING IN AT MANHOLE HOOK HOLE LID / FRAME & COVER TO BE REPLACED "BY OTHERS"

MANHOLE MAY HAVE AN INCH OR SO OF DIRT SILTED-OVER THE TOP OF THE LID

ACCESS MH 5746-483 FROM THE SCHOOL YARD PROPERTY, IT IS LOCATED WEST OF THE WEST FENCE LINE

17-3