

N.W. Corner SW 1/4, Sec. 28
Twp. 26S, R-1-W
Found 3/4" Iron Pipe
w/ 1.5875 Cap-Moehring
BM#58

N.E. Corner SW 1/4, Sec. 28
Twp. 26S, R-1-W
Found 3/4" Rebar

BENEFIT DISTRICT

PAVING IMPROVEMENTS
(PHASE 3 AND 4)

SWS LINE NO. 5

FEMA FLOODWAY EDGE

SWS LINE NO. 5A

SWS LINE NO. 5

SWS LINE NO. 4

SWS LINE NO. 3

PART OF MASS SITE GRADING
(PRIVATE CONTRACT)

SCALE: 1" = 150'

GENERAL NOTES

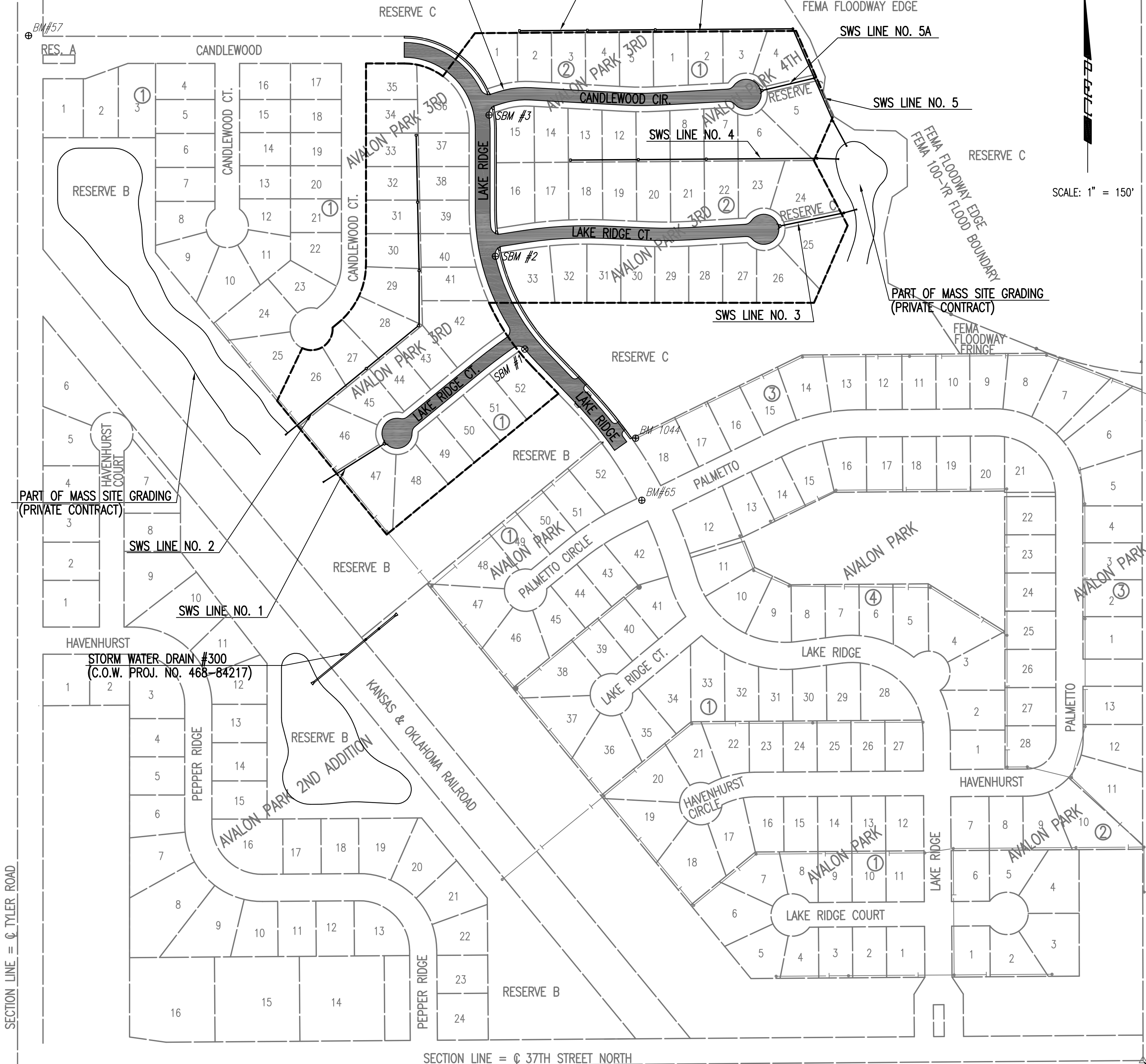
- UNDERGROUND UTILITY SERVICE LINES AND OVERHEAD UTILITY POLE LINES ARE TO BE ADJUSTED AS NECESSARY BY OTHERS PRIOR TO CONSTRUCTION UNLESS THE PLANS SPECIFICALLY CALL FOR THEIR ADJUSTMENT BY THE CONTRACTOR. EXISTING UTILITIES AND THEIR LOCATION, AS SHOWN ON THE PLANS, REPRESENT THE BEST INFORMATION OBTAINABLE FOR DESIGN. LOCATION INFORMATION HAS BEEN OBTAINED FROM THE VARIOUS UTILITY COMPANIES AND IS EITHER FROM COMPANY RECORD DRAWINGS OR COMPANY PROVIDED FIELD LOCATIONS. THE CONTRACTOR WILL BE REQUIRED TO WORK AROUND AND PROTECT EXISTING UTILITIES WITHIN THE RIGHT-OF-WAY WHICH DO NOT CONFLICT WITH PROPOSED CONSTRUCTION.
- TREES AND SHRUBS IN PUBLIC RIGHT-OF-WAY WHICH ARE IN DIRECT CONFLICT WITH PROPOSED NEW CONSTRUCTION SHALL BE REMOVED BY THE CONTRACTOR, WITH THE ENGINEER'S APPROVAL. TREES AND SHRUBS WHICH ARE NOT IN DIRECT CONFLICT WITH PROPOSED NEW CONSTRUCTION SHALL BE SAVED AND PROTECTED FROM DAMAGE.
- RUBBLE FROM THE REMOVAL OF MISCELLANEOUS STRUCTURES SHALL BE DISPOSED OF ON SITES TO BE PROVIDED BY THE CONTRACTOR AND APPROVED AS NOTED BELOW.

ALL DISPOSAL SITES MUST BE APPROVED BY THE KANSAS DEPARTMENT OF HEALTH AND ENVIRONMENT. MATERIAL EITHER STOCKPILED OR DISPOSED OF IN A FLOOD PLAIN WOULD REQUIRE A KANSAS STATE BOARD OF AGRICULTURE PERMIT. ANY MATERIAL DUMPED IN WATERS OF THE UNITED STATES OR WETLANDS IS SUBJECT TO U.S. CORPS OF ENGINEERS PERMITTING REGULATIONS. ANY MATERIAL BURIED OR STOCKPILED BEYOND APPROVED CONSTRUCTION LIMITS WOULD REQUIRE ADDITIONAL ARCHEOLOGICAL INVESTIGATIONS UNLESS BURIED IN A PREVIOUSLY APPROVED BORROW LOCATION.
- CONTRACTOR SHALL SATISFY HIMSELF OF SURFACE AND SUBSURFACE CONDITIONS PRIOR TO BIDDING.
- TEMPORARY SURFACING MATERIAL (ROCK, ASPHALT, ETC.) MAY HAVE BEEN PLACED WITHIN STREET RIGHTS-OF-WAY FOR HAUL ROADS AND TEMPORARY ACCESS. CONTRACTOR SHALL FIELD VERIFY EXISTING CONDITIONS TO DETERMINE EXTENT, IF ANY, OF SUCH SURFACING. CONTRACTOR SHALL REMOVE SAID TEMPORARY SURFACING IN THE SAME MANNER AS NOTED ABOVE FOR RUBBLE. THIS REMOVAL SHALL BE SUBSIDIARY TO "EXCAVATION".
- CONTRACTOR SHALL PROVIDE A MINIMUM SEVENTY-TWO (72) HOUR ADVANCE NOTICE (EXCLUDING WEEKENDS AND HOLIDAYS) PRIOR TO BEGINNING ANY EXCAVATION, TO KANSAS ONE-CALL SYSTEM, A UTILITY LOCATION SERVICE, AT (316) 687-2470 TO REQUEST THE FOLLOWING UTILITY COMPANIES TO LOCATE ALL EXISTING LINES WITHIN THE PROJECT AREA: AQUILA GAS, WESTAR ENERGY, AT&T, COX COMMUNICATIONS, CITY OF WICHITA SEWER MAINTENANCE AND CITY OF WICHITA WATER DEPARTMENT.
- THE CONTRACTOR SHALL BE RESPONSIBLE FOR PRESERVING PROPERTY IRONS. THE CONTRACTOR WILL BE REQUIRED TO RE-ESTABLISH ANY PROPERTY IRONS WHICH ARE DAMAGED OR DESTROYED BY HIS CONSTRUCTION OPERATIONS OR COVERED BY 12" OR MORE OF FILL WITH THIS PROJECT. SUCH IRONS SHALL BE RE-ESTABLISHED BY A LICENSED LAND SURVEYOR IN ACCORDANCE WITH STATE LAWS.
- THE WATER DEPARTMENT SHALL FIELD LOCATE WATER VALVES ONE TIME DURING CONSTRUCTION WHEN REQUESTED BY THE CONTRACTOR. IT SHALL BE THE CONTRACTOR'S RESPONSIBILITY TO PRESERVE SUCH FIELD LOCATIONS DURING THE CONSTRUCTION PROCESS. WATER VALVES, WATER VALVE BOXES OR FIRE HYDRANTS DAMAGED DURING CONSTRUCTION SHALL BE REPAIRED BY THE CONTRACTOR AT HIS OWN EXPENSE.
- THE CONTRACTOR SHALL ADJUST WATER VALVE BOXES AS DIRECTED BY THE ENGINEER. THIS WORK TO BE SUBSIDIARY TO OTHER BID ITEMS.
- INLET HOOKUPS AND INLET PROTECTION SHALL BE BID PER EACH REGARDLESS OF INLET SIZE.
- THE CONTRACTOR SHALL APPLY TEMPORARY SEED AND MULCH TO ALL UNPAVED AREAS DISTURBED BY HIS CONSTRUCTION OPERATIONS IN ACCORDANCE WITH THE STANDARD SPECIFICATIONS. SEED SHALL BE ANNUAL RYE APPLIED AT THE RATE OF 4 LBS. PER 1,000 SQUARE FEET. MULCH SHALL BE PRAIRIE HAY APPLIED AT THE RATE OF 15 BALES PER ACRE. THIS WORK SHALL BE PAID FOR AT THE CONTRACT LUMP SUM PRICE BID FOR "TEMPORARY PROJECT SEEDING".
- PRIOR TO CONSTRUCTION, THE CONTRACTOR SHALL RE-ESTABLISH CONTROL POINTS AND BENCH MARKS AND VERIFY THEIR ACCURACY.
- EROSION CONTROL (BMP'S)
THE CONTRACTOR SHALL INSTALL AND/OR MAINTAIN EROSION CONTROL METHODS AS SPECIFIED ON THE EROSION CONTROL PLAN CONTAINED HEREIN. THE FOLLOWING QUANTITIES ARE ESTIMATED, AND SHOULD BE CONSIDERED THE MINIMUM EFFORT REQUIRED. INSTALLATION OF THESE BMP'S DOES NOT RELIEVE THE CONTRACTOR OF THE RESPONSIBILITY OF ABATING SOIL EROSION.

CURB INLET PROTECTION 5 EACH
AREA INLET PROTECTION 11 EACH
CONSTRUCTION ENTRANCE 1 EACH
BACK OF CURB PROTECTION 5,734 L.F.
SILT FENCE BARRIER 1,025 L.F.
- CONTRACTOR SHALL MAINTAIN EXISTING CURB INLET PROTECTION, AREA INLET PROTECTION, AND SILT FENCE PROTECTION CONSTRUCTED AS PART OF OTHER PROJECTS WHERE NECESSARY TO CONTROL EROSION. THIS WORK TO BE SUBSIDIARY TO "SITE RESTORATION".
- CONTRACTOR SHALL VERIFY, AND CORRECT IF NECESSARY, THAT ALL AREAS UNDER PROPOSED PAVEMENT ARE COMPACTED TO 90% STANDARD DENSITY. THIS WORK SHALL BE SUBSIDIARY TO "EXCAVATION".
- IN PROPER SEASON, CONTRACTOR SHALL APPLY PERMANENT SEED, FERTILIZER, AND MULCH TO ALL UNPAVED AREAS DISTURBED BY CONSTRUCTION WITHIN RESERVES "B" AND "C" AND ADJACENT ROAD RIGHT-OF-WAY. SEED SHALL BE A PREMIUM TURF TYPE FESCUE BLEND WELL SUITED TO SOUTH CENTRAL KANSAS AND APPLIED AT THE RATE OF 8 LBS. PER 1000 SQ. FT. FERTILIZER SHALL BE 12-24-12 APPLIED AT THE RATE OF 850 LB. PER ACRE.

BENCHMARK LIST

- BM #57 - CHISELED "σ" ON THE S END OF THE RCP AT THE ENTRANCE TO "THE EDGE" PAINT BALL ADVENTURES, ON THE E SIDE OF TYLER ROAD, BETWEEN THE RAILROAD TRACKS AND K96 HIGHWAY.
ELEV. = 153.34
- BM #58 - CHISELED "σ" ON THE S END OF THE CONCRETE HEADWALL, ON THE E END OF THE RCB UNDER TYLER ROAD AT THE 1/2 MILE LINE, S OF K96 HIGHWAY.
ELEV. = 154.63
- BM #65 - NW CORNER OF LAKE RIDGE AND PALMETTO CIRCLE
ELEV. = 150.58
- BM #1044 - NORTH RIM OF THE SANITARY SEWER MANHOLE AT THE SW CORNER OF AVALON PARK 3RD POOL AREA.
ELEV. = 150.38



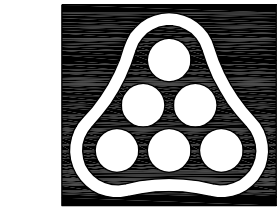
SECTION LINE = Q TYLER ROAD

SECTION LINE = Q 37TH STREET NORTH

S.W. Cor. SW 1/4,
Sec. 28, Twp. 26S, R-1-W
Found 3/4" Pipe

S.E. Corner SW 1/4,
Sec. 28, Twp. 26S, R-1-W
Found 5/8" Rebar

Drawn 09-12-2007 6:44:48 AM by BJS
Plot Scale 1:150 09-12-2007 6:50:39 AM by BJS
Q:\2007\07150\000\07150-000-C-keymap



No.	Revision	By	Date
AVALON PARK 3RD AND 4TH ADDITION-PHASE 1			
KEY MAP AND GENERAL NOTES			
JAMES L. ARMOUR, P.E. - CITY ENGINEER CITY OF WICHITA PROJECT NO. 472-84441			
Professional Engineering Consultants, P.A. 303 S. TOPKA • WICHITA, KANSAS 67202 316-262-2691 • FAX 316-262-3003			
Designed by	BMM	Job No.	35-07150-000
Drawn by	BJS, TAT	Date	April 2007
			Sheet 2 of 68