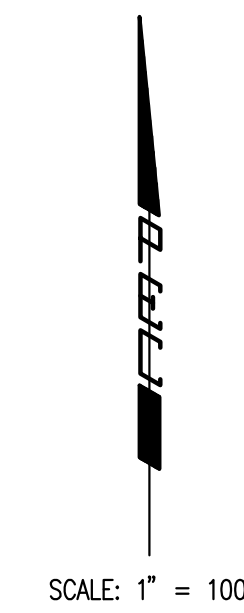
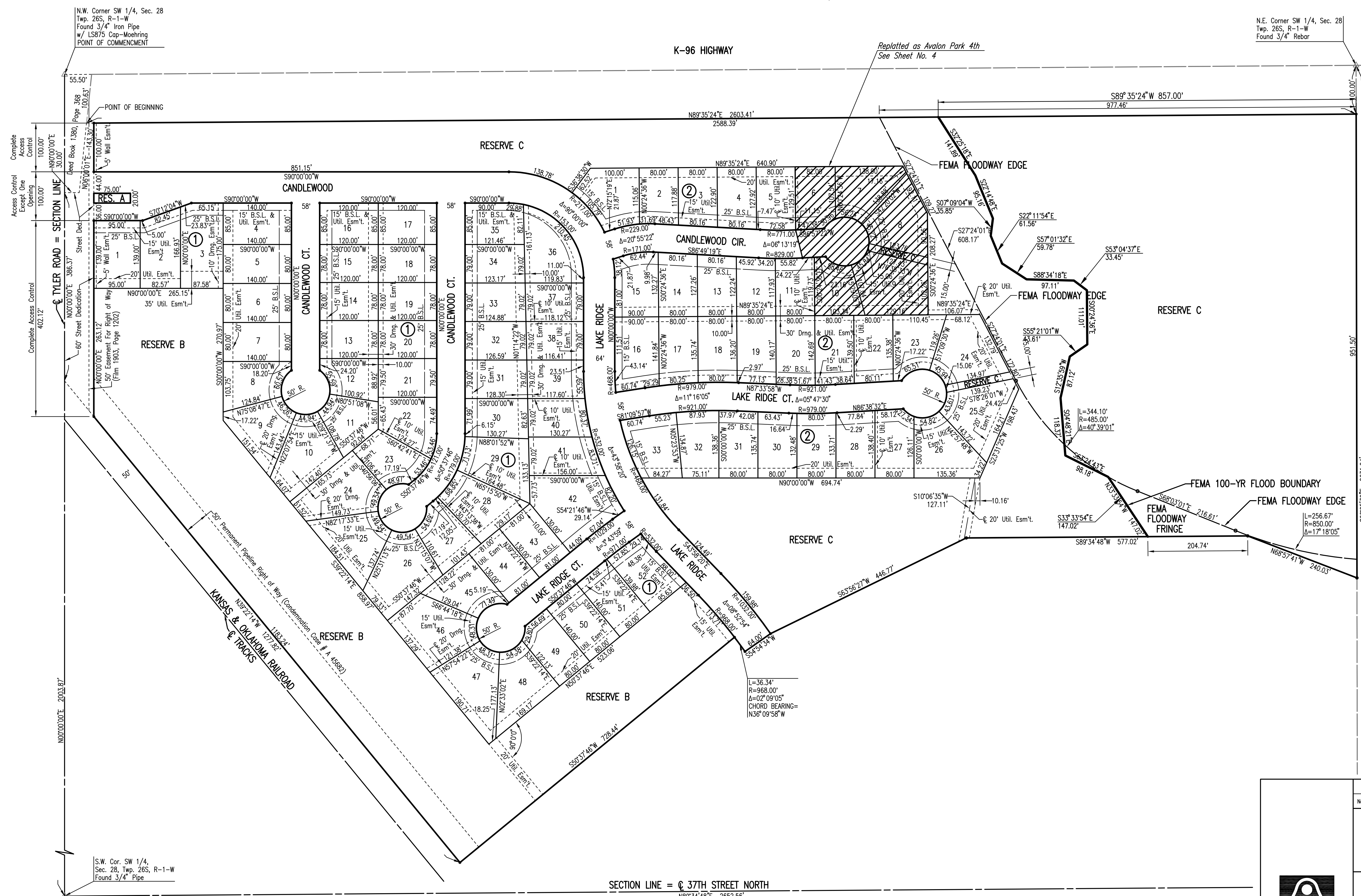


# AVALON PARK 3RD

AN ADDITION TO WICHITA,  
SEDGWICK COUNTY, KANSAS

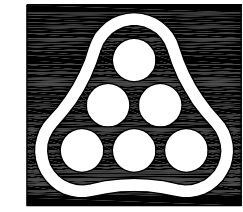


**LEGEND**

- △ = SECTION CORNER
- = 1/2" REBAR W/PEC CAP UNLESS OTHERWISE NOTED
- = NO MONUMENT SET

Scaled 09-11-2007 10:49:46 AM by BJS  
 Plot Scale 1:100 09-12-2007 6:53:08 AM by BJS  
 Q:\2007\07150\000\07150-000-C-FINAL PLAT 3RD

No.	Revision	By	Date
AVALON PARK 3RD AND 4TH ADDITION-PHASE 1			
<b>AVALON PARK 3RD PLAT</b>			
JAMES L. ARMOUR, P.E. - CITY ENGINEER CITY OF WICHITA PROJECT NO. 472-84441			
<b>Professional Engineering Consultants, P.A.</b> 303 S. TOPEKA • WICHITA, KANSAS 67202 316-262-2691 • FAX 316-262-3003			
Designed by	Job No. 35-07150-000		Sheet 3 of 68
Drawn by BJS, TAT	Date April 2007		



SECTION LINE = 37TH STREET NORTH  
N89°34'48"E 2652.56'

S.W. Cor. SW 1/4,  
Sec. 28, Twp. 26S, R-1-W  
Found 3/4" Pipe

N.E. Corner SW 1/4, Sec. 28  
Twp. 26S, R-1-W  
Found 3/4" Rebar

N.W. Corner SW 1/4, Sec. 28  
Twp. 26S, R-1-W  
Found 3/4" Iron Pipe  
w/ L5875 Cap-Moehring  
POINT OF COMMENCEMENT