

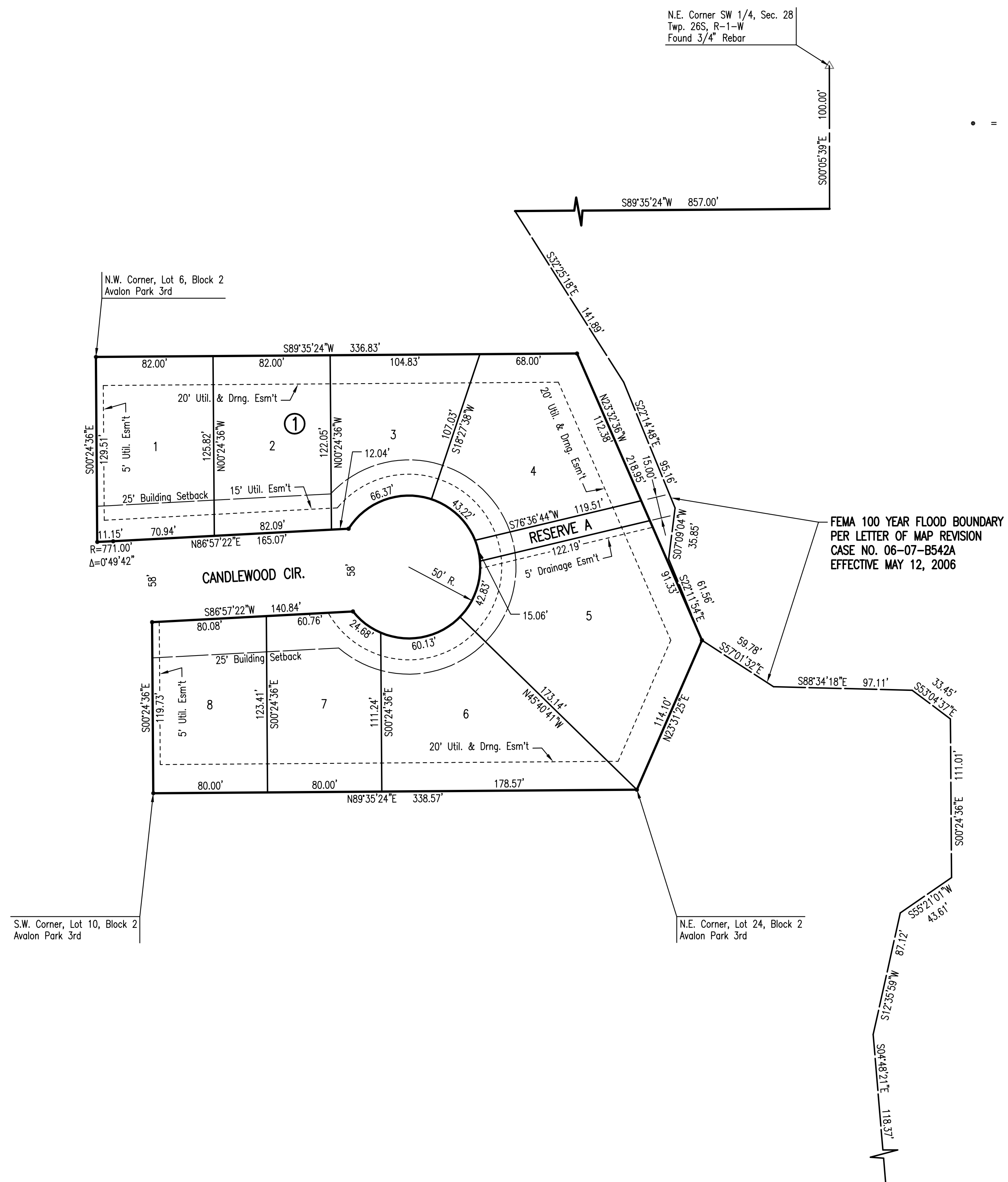
AVALON PARK 4TH

AN ADDITION TO WICHITA,
SEDGWICK COUNTY, KANSAS

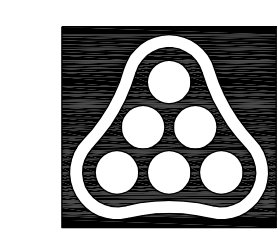


SCALE: 1" = 50'

• = 1/2" REBAR W/PEC CAP UNLESS OTHERWISE NOTED



Saved: 07-26-2007 8:38:46 AM by BJS
 Plot Scale: 1/50 09-12-2007 6:54:46 AM by BJS
 03/2007/07150/000/07150-000-C-FINAL PLAT 4TH



No.	Revision	By	Date
	AVALON PARK 3RD AND 4TH ADDITION-PHASE 1		
AVALON PARK 4TH PLAT			
JAMES L. ARMOUR, P.E. - CITY ENGINEER CITY OF WICHITA PROJECT NO. 472-84441			
Professional Engineering Consultants, P.A. 303 S. TOPEKA • WICHITA, KANSAS 67202 316-262-2691 • FAX 316-262-3003			
Designed by	BDB, BMM	Job No.	35-07150-000
Drawn by	BJS, TAT,	Date	April 2007
			Sheet 4 of 68