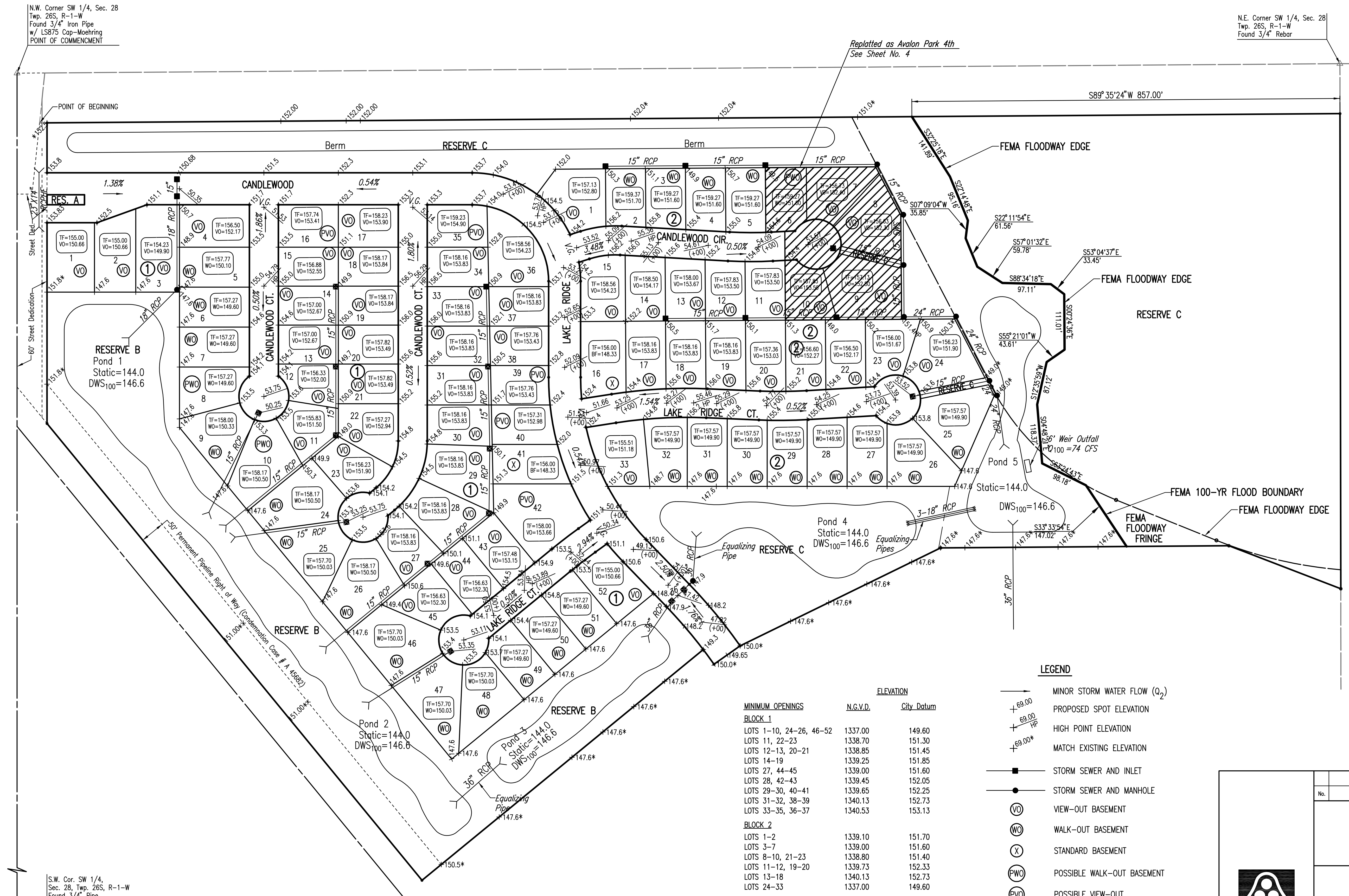
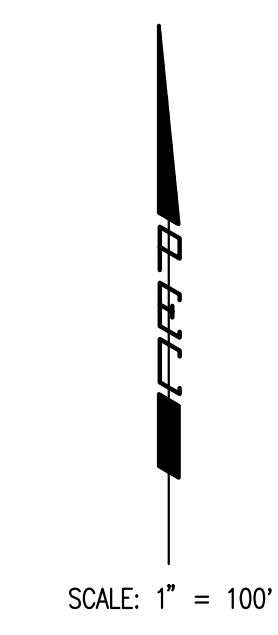


FOUR-CORNER PLAN AVALON PARK 3RD AN ADDITION TO WICHITA, SEDGWICK COUNTY, KANSAS



N.W. Corner SW 1/4, Sec. 28
Twp. 26S, R-1-W
Found 3/4" Iron Pipe
w/ 1.5875 Cap-Moehring
POINT OF COMMENCEMENT

N.E. Corner SW 1/4, Sec. 28
Twp. 26S, R-1-W
Found 3/4" Rebar



		ELEVATION	
		N.G.V.D.	City Datum
MINIMUM OPENINGS			
BLOCK 1			
LOTS 1-10, 24-26, 46-52	1337.00	149.60	
LOTS 11, 22-23	1338.70	151.30	
LOTS 12-13, 20-21	1338.85	151.45	
LOTS 14-19	1339.25	151.85	
LOTS 27, 44-45	1339.00	151.60	
LOTS 28, 42-43	1339.45	152.05	
LOTS 29-30, 40-41	1339.65	152.25	
LOTS 31-32, 38-39	1340.13	152.73	
LOTS 33-35, 36-37	1340.53	153.13	
BLOCK 2			
LOTS 1-2	1339.10	151.70	
LOTS 3-7	1339.00	151.60	
LOTS 8-10, 21-23	1338.80	151.40	
LOTS 11-12, 19-20	1339.73	152.33	
LOTS 13-18	1340.13	152.73	
LOTS 24-33	1337.00	149.60	

- LEGEND**
- MINOR STORM WATER FLOW (Q₂)
 - + 69.00 PROPOSED SPOT ELEVATION
 - + 69.00 HP HIGH POINT ELEVATION
 - + 69.00* MATCH EXISTING ELEVATION
 - STORM SEWER AND INLET
 - STORM SEWER AND MANHOLE
 - VO VIEW-OUT BASEMENT
 - WO WALK-OUT BASEMENT
 - X STANDARD BASEMENT
 - PWO POSSIBLE WALK-OUT BASEMENT
 - PVO POSSIBLE VIEW-OUT

Scaled 09-12-2007 6:58:24 AM by BJS
 Plot Scale 1:100 09-12-2007 6:56:57 AM by BJS
 Q:\2007\07150\000\07150-000-C-FOUR CORNER 3RD

S.W. Cor. SW 1/4,
Sec. 28, Twp. 26S, R-1-W
Found 3/4" Pipe

No.	Revision	By	Date
AVALON PARK 3RD AND 4TH ADDITION-PHASE 1			
FOUR CORNER PLAN			
JAMES L. ARMOUR, P.E. - CITY ENGINEER CITY OF WICHITA PROJECT NO. 472-84441			
Professional Engineering Consultants, P.A. 303 S. TOPEKA • WICHITA, KANSAS 67202 316-262-2691 • FAX 316-262-3003			
Designed by	BMM	Job No.	35-07150-000
Drawn by	BJS, TAT	Date	April 2007
			Sheet 6 of 68