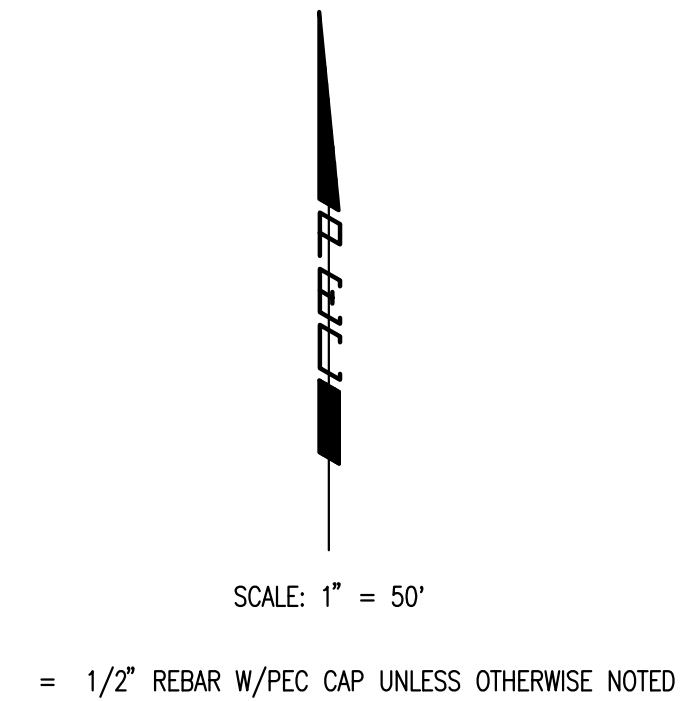
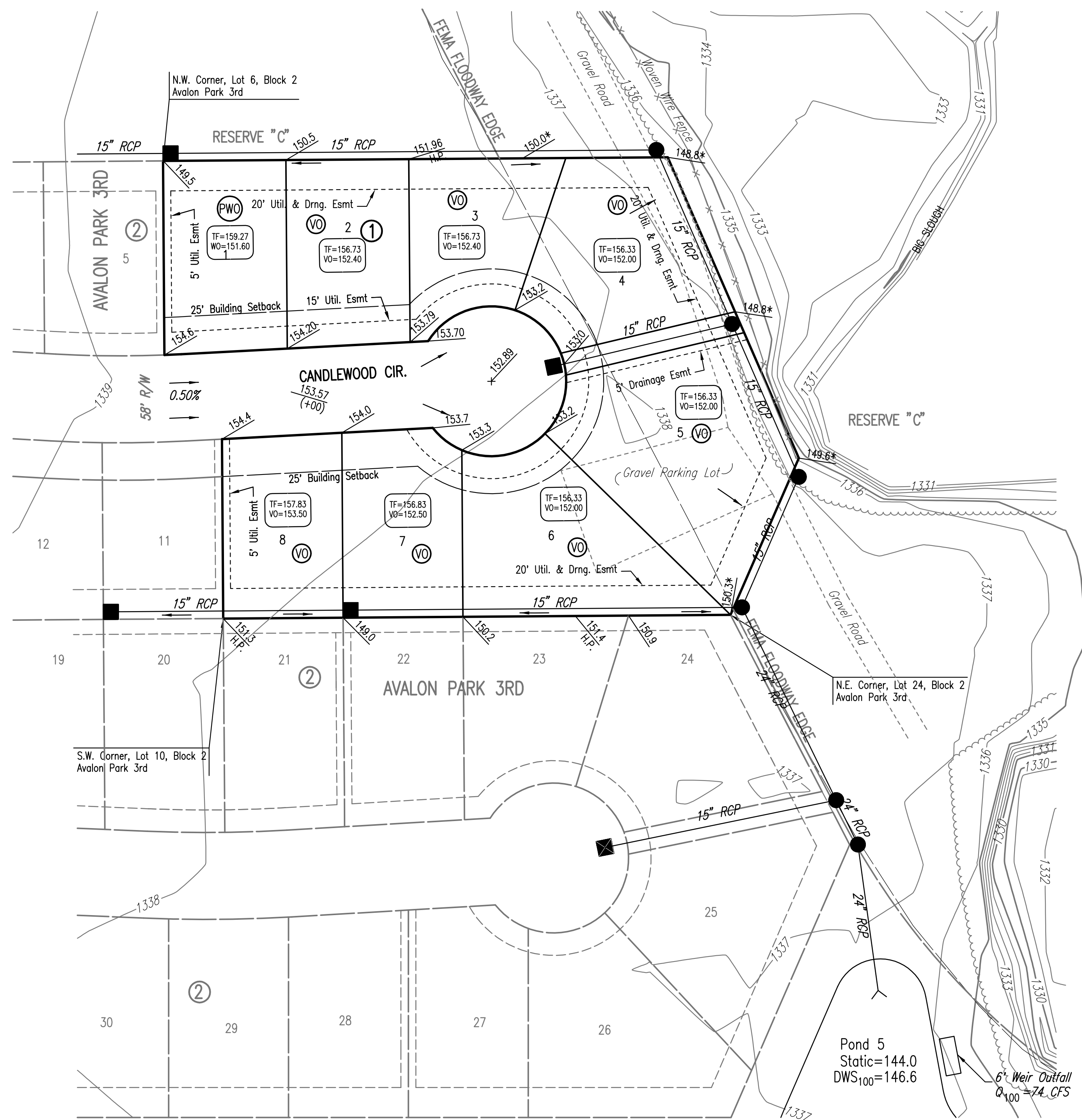


FOUR CORNER PLAN FOR
AVALON PARK 4TH
 AN ADDITION TO WICHITA,
 SEDGWICK COUNTY, KANSAS



- LEGEND**
- MINOR STORM WATER FLOW (Q₂)
 - PROPOSED SPOT ELEVATION
 - HIGH POINT ELEVATION
 - MATCH EXISTING ELEVATION
 - STORM SEWER AND INLET
 - STORM SEWER AND MANHOLE
 - VIEW-OUT BASEMENT
 - WALK-OUT BASEMENT
 - STANDARD BASEMENT
 - POSSIBLE WALK-OUT BASEMENT
 - POSSIBLE VIEW-OUT BASEMENT

MINIMUM OPENINGS	ELEVATION	
	N.G.V.D.	City Datum
BLOCK 1		
LOTS 1-8	1338.00	151.60

Pond 5
 Static=144.0
 DWS₁₀₀=146.6

NOTE: PROPOSED ELEVATIONS ARE SHOWN IN CITY OF WICHITA VERTICAL DATUM. EXISTING ELEVATIONS ARE SHOWN IN NGVD29 VERTICAL DATUM, CONVERSION: NGVD29-1187.4= C.O.W.DATUM

Sowed 09-12-2007 6:59:58 AM by BJS
 Plot Scale 1:50 09-12-2007 7:02:51 AM by BJS
 Q:\2007\07150\000\07150-000-C-FOUR CORNER 4TH

No.	Revision	By	Date
AVALON PARK 3RD AND 4TH ADDITION-PHASE 1			
FOUR CORNER PLAN			
JAMES L. ARMOUR, P.E. - CITY ENGINEER CITY OF WICHITA PROJECT NO. 472-84441			
Professional Engineering Consultants, P.A. 303 S. TOPEKA • WICHITA, KANSAS 67202 316-262-2691 • FAX 316-262-3003			
Designed by	BMM	Job No.	35-07150-000
Drawn by	BJS, TAT	Date	April 2007
			Sheet 7 of 68