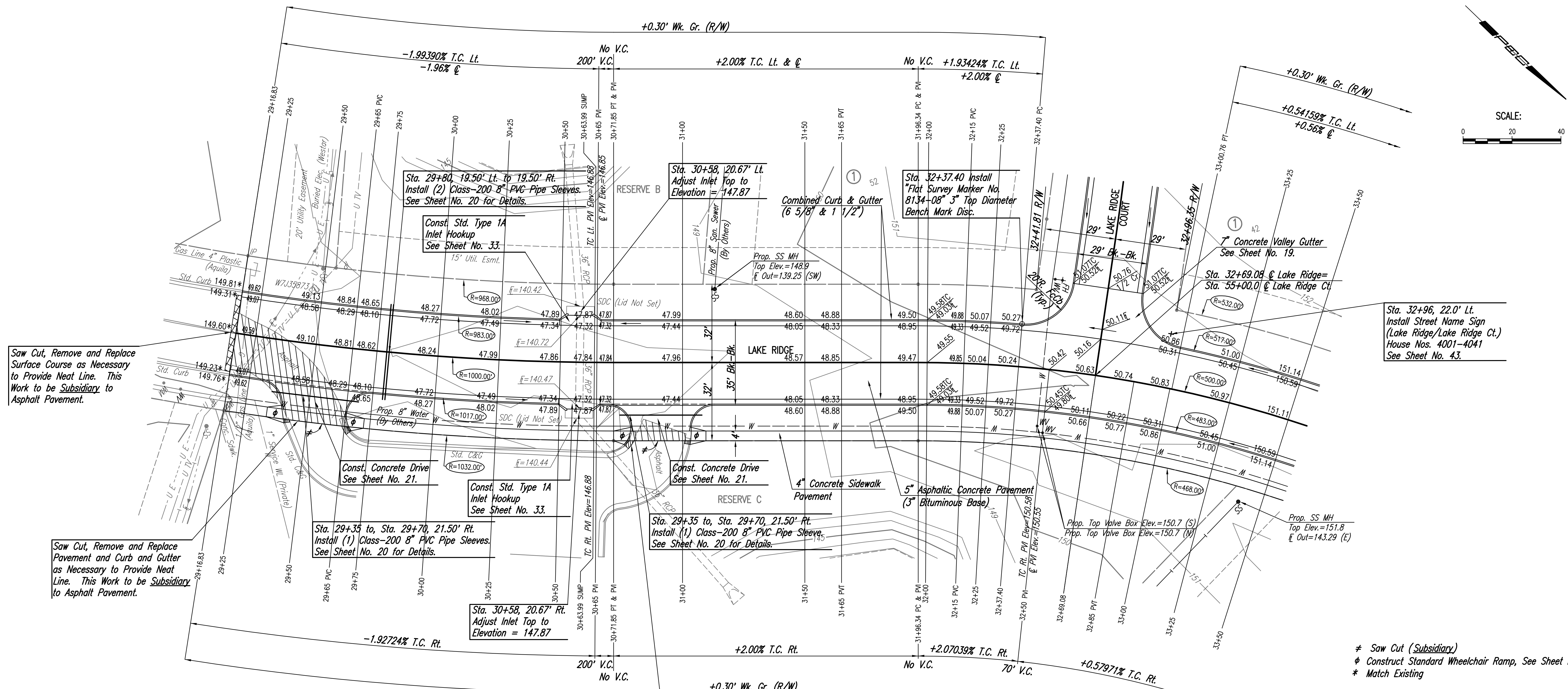


Q CURVE DATA							
A=8°52'54" D=5°43'46.5" R=1000.00' L=155.02' T=77.67' E=3.01'							
CURVE DATA BASED ON Q radius L/2=4°26'27.5"							
Q STATION	Q ARC LENGTH	FACE CURB LENGTH		CHORD LENGTH		DEFLECTION ANGLE	Q TOTAL DEFLECTION
		LEFT CURB	RIGHT CURB	8' OFF LEFT FACE CURB	8' OFF RIGHT FACE CURB		
29+16.83						0°00'00.0"	0°00'00.0"
29+25.00	8.17"	8.03'	8.31'	7.97'	8.37'	0°14'02.6"	0°14'02.6"
29+50.00	25.00'	24.58'	25.42'	24.37'	25.62'	0°42'58.3"	0°42'58.3"
29+75.00	25.00'	24.58'	25.42'	24.37'	25.62'	0°42'58.3"	0°42'58.3"
30+00.00	25.00'	24.58'	25.42'	24.37'	25.62'	0°42'58.3"	0°42'58.3"
30+25.00	25.00'	24.58'	25.42'	24.37'	25.62'	0°42'58.3"	0°42'58.3"
30+50.00	25.00'	24.58'	25.42'	24.37'	25.62'	0°42'58.3"	0°42'58.3"
30+71.85	21.85'	21.48'	22.22'	21.30'	22.39'	0°37'33.4"	0°37'33.4"
TOTAL	155.02'	152.38'	157.65'				

Defl./ft. = 1.718873 min.

WATER VALVE BOX ELEVATIONS			
STREET	STATION	OFFSET	PROPOSED ELEVATION
LAKE RIDGE	31+47.46	23.5' Rt.	150.7 (S)
LAKE RIDGE	31+50.09	26.0' Rt.	150.7 (N)



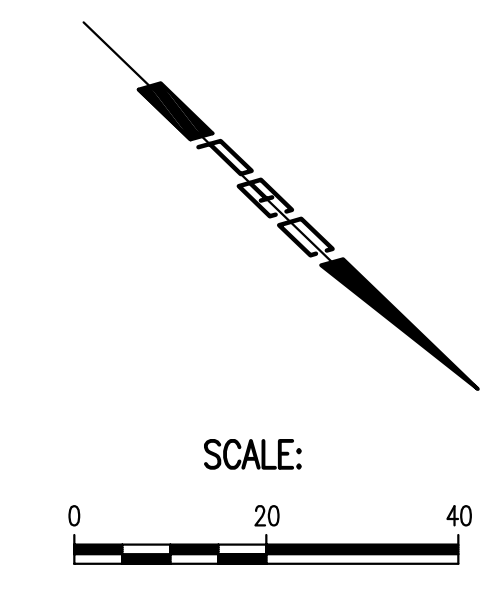
Saw Cut, Remove and Replace Surface Course as Necessary to Provide Neat Line. This Work to be Subsidiary to Asphalt Pavement.

Saw Cut, Remove and Replace Pavement and Curb and Gutter as Necessary to Provide Neat Line. This Work to be Subsidiary to Asphalt Pavement.

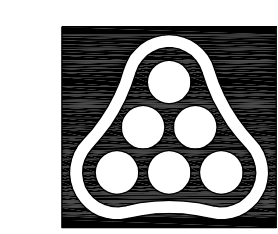
Saw Cut, Remove and Replace Pavement and Curb and Gutter as Necessary to Provide Neat Line. This Work to be Subsidiary to Asphalt Pavement.

Sta. 32+96, 22.0' Lt. Install Street Name Sign (Lake Ridge/Lake Ridge Ct.) House Nos. 4001-4041 See Sheet No. 43.

- ≠ Saw Cut (Subsidiary)
- φ Construct Standard Wheelchair Ramp, See Sheet No. 20.
- * Match Existing



Scaled 09-11-2007 11:23:30 AM by BJB
 Plot Scale 1:20 09-12-2007 7:08:36 AM by BJB
 Q:\2007\07150\000\07150-000-C-5142917-3350



No.	Revision	By	Date
AVALON PARK 3RD AND 4TH ADDITION-PHASE 1 LAKE RIDGE STA. 29+16.83 TO STA. 33+50 JAMES L. ARMOUR, P.E. - CITY ENGINEER CITY OF WICHITA PROJECT NO. 472-84441 Professional Engineering Consultants, P.A. 303 S. TOPKA • WICHITA, KANSAS 67202 316-262-2691 • FAX 316-262-3003			
Designed by	BMM	Job No.	35-07150-000
Drawn by	BJS, TAT	Date	April 2007
			Sheet 11 of 68