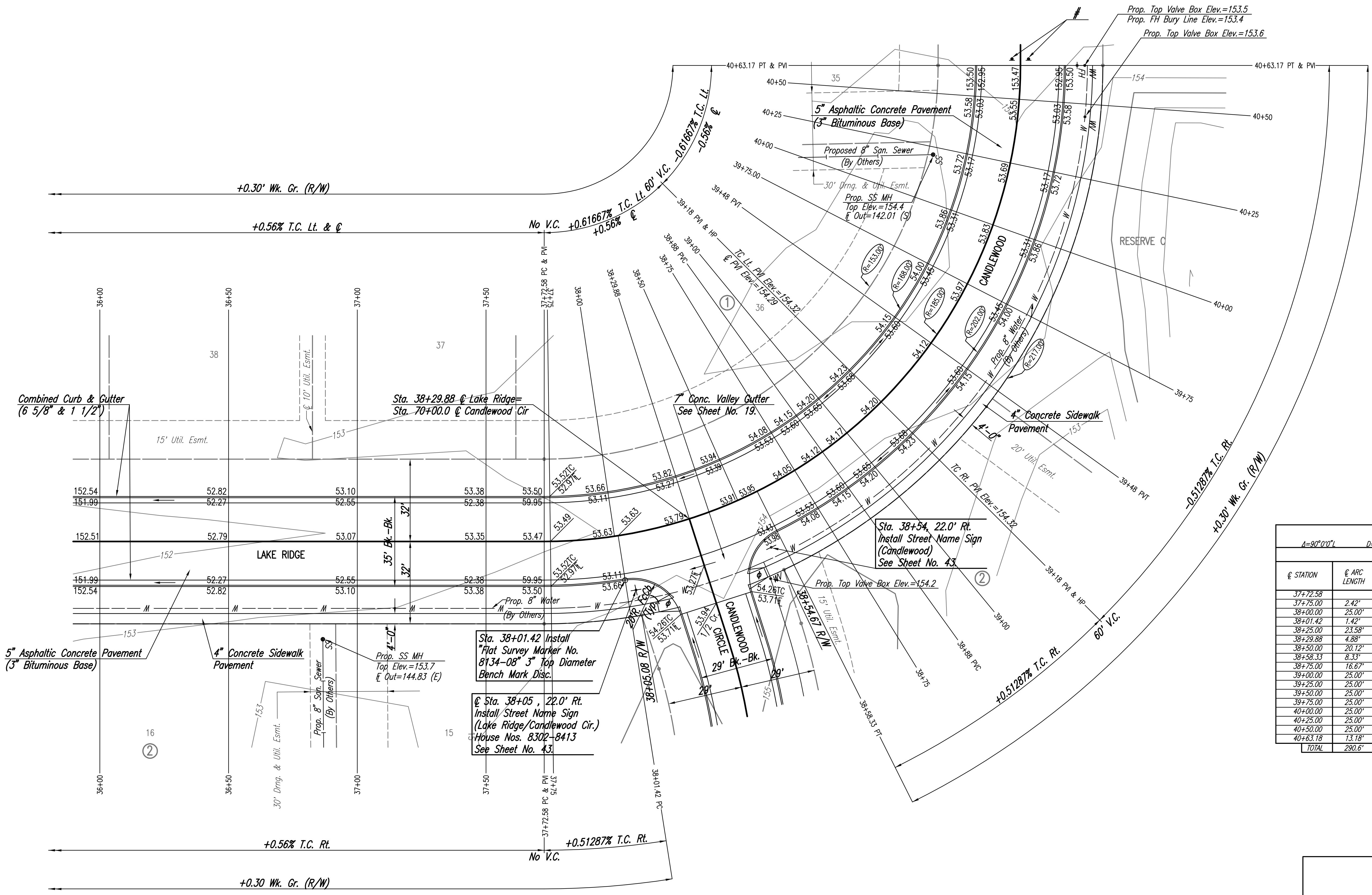
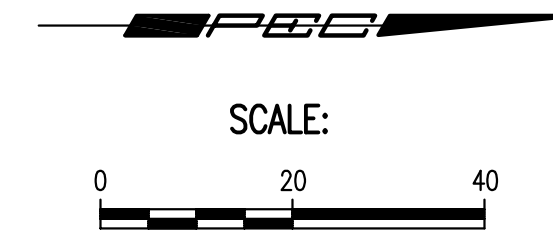


WATER VALVE BOX ELEVATIONS			
STREET	STATION	OFFSET	PROPOSED ELEVATION
LAKE RIDGE	38+49.43	33.0' Rt.	154.2
CANDLEWOOD	40+45.65	26.0' Rt.	153.6
CANDLEWOOD	40+63.17	25.0' Rt.	153.5



CURVE DATA						
A=90°0'0" D=30° 58' 14.5" R=185.00' L=290.60' T=185.00' E=76.63'						
CURVE DATA BASED ON $\Delta/2 = 45^\circ 0' 0''$						
STATION	ARC LENGTH	FACE CURB LENGTH	CHORD LENGTH	DEFLECTION ANGLE	TOTAL DEFLECTION	
		LEFT CURB	RIGHT CURB		LEFT	RIGHT
37+72.58				0°00'00.0"	0°00'00.0"	
37+75.00	2.42'	2.20'	2.64'	2.75'	00°22'29.1"	00°22'29.1"
38+00.00	25.00'	22.70'	27.30'	21.61'	03°52'16.8"	04°14'45.9"
38+01.42	1.42'	1.29'	1.55'	1.23'	00°13'11.6"	04°27'57.5"
38+25.00	23.58'	21.41'	20.38'	2.75'	03°39'05.2"	08°07'02.7"
38+29.88	4.88'	4.43'	4.22'	4.22'	00°45'20.5"	08°52'23.2"
38+50.00	20.12'	18.27'	17.39'	17.39'	03°06'56.4"	11°59'19.6"
38+58.33	8.33'	7.56'	7.20'	7.20'	01°17'23.7"	13°16'43.3"
38+75.00	16.67'	15.14'	18.20'	14.41'	02°34'53.1"	15°51'36.4"
39+00.00	25.00'	22.70'	27.30'	21.61'	03°52'16.8"	19°43'53.2"
39+25.00	25.00'	22.70'	27.30'	21.61'	03°52'16.8"	23°36'10.0"
39+50.00	25.00'	22.70'	27.30'	21.61'	03°52'16.8"	27°28'26.8"
39+75.00	25.00'	22.70'	27.30'	21.61'	03°52'16.8"	31°20'43.7"
40+00.00	25.00'	22.70'	27.30'	21.61'	03°52'16.8"	35°13'5"
40+25.00	25.00'	22.70'	27.30'	21.61'	03°52'16.8"	39°05'17.3"
40+50.00	25.00'	22.70'	27.30'	21.61'	03°52'16.8"	42°57'34.1"
40+63.18	13.18'	11.97'	14.39'	11.39'	02°02'27.5"	45°00'1.1"
TOTAL	290.6'	263.89'	282.48'			

Install Type OMA-3 (End Of Roadway Marker) See Sheet No. 43.
 Construct Std. Wheelchair Ramp, See Sheet No. 20.

No.	Revision	By	Date
AVALON PARK 3RD AND 4TH ADDITION-PHASE 1 LAKE RIDGE STA. 36+00 TO STA. 40+63.17 JAMES L. ARMOUR, P.E. - CITY ENGINEER CITY OF WICHITA PROJECT NO. 472-84441			
Professional Engineering Consultants, P.A. 303 S. TOPEKA • WICHITA, KANSAS 67202 316-262-2691 • FAX 316-262-3003			
Designed by	BMM	Job No.	35-07150-000
Drawn by	BJS, TAT	Date	April 2007
			Sheet 13 of 68

Scaled 09-12-2007 7:11:52 AM by BJS
 Plot Scale 1:20 09-12-2007 7:12:19 AM by BJS
 G:\2007\07150\000\07150-000-C-51A3600-4063