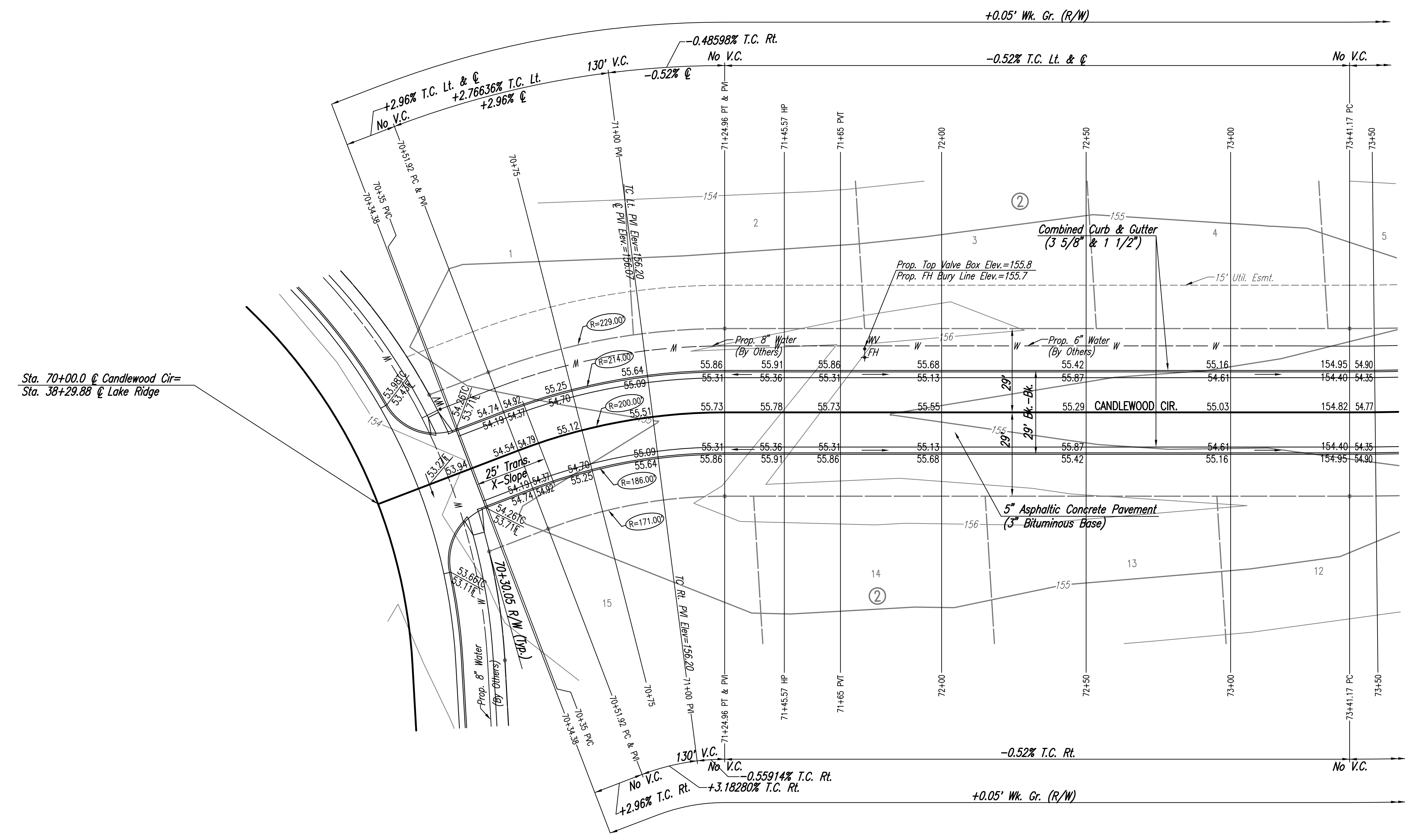
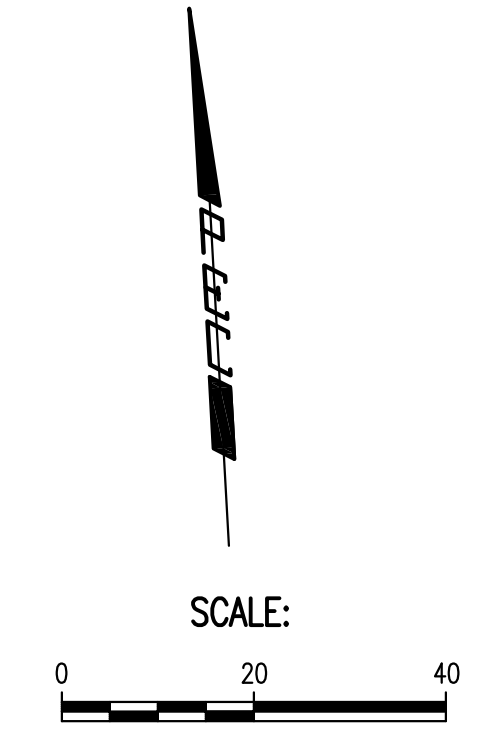


WATER VALVE BOX ELEVATIONS			
STREET	STATION	OFFSET	PROPOSED ELEVATION
CANDLEWOOD CIR.	71+73.45	22.0' Lt.	155.8



Sta. 70+00.0 @ Candlewood Cir=
Sta. 38+29.88 @ Lake Ridge

Q CURVE DATA

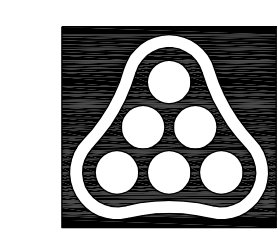
A=20°55'22"R D=28°38'52.4" R=200.00' L=73.03' T=36.93' E=3.38'

CURVE DATA BASED ON Q radius Δ/2= 10° 27' 41"

Q STATION	Q ARC LENGTH	FACE CURB LENGTH		CHORD LENGTH		DEFLECTION ANGLE	Q TOTAL DEFLECTION
		LEFT CURB	RIGHT CURB	8' OFF LEFT FACE CURB	8' OFF RIGHT FACE CURB		
70+51.92						0°00'00.0"	0°00'00.0"
70+75.00	23.08'	24.70'	21.46'	25.60'	20.53'	03°18'21.5"	03°18'21.5"
71+00.00	25.00'	26.75'	23.25'	27.73'	22.24'	03°34'51.6"	06°53'13.1"
71+24.95	24.95'	26.70'	23.21'	27.68'	22.19'	03°34'25.8"	10°27'41.0"
TOTAL	73.03'	78.15'	67.92'				

Defl./ft. = 8.594367 min.

NOTE: THIS STREET TO BE CONSTRUCTED WITH ROLL-TYPE CURB. TOP OF CURB ELEVATIONS GIVEN ARE FOR FULL HEIGHT CURB.



No.	Revision	By	Date
AVALON PARK 3RD AND 4TH ADDITION-PHASE 1 CANDLEWOOD CIR. STA. 70+00 TO STA. 73+50 JAMES L. ARMOUR, P.E.- CITY ENGINEER CITY OF WICHITA PROJECT NO. 472-84441			
Professional Engineering Consultants, P.A. 303 S. TOPEKA • WICHITA, KANSAS 67202 316-262-2691 • FAX 316-262-3003			
Designed by	BMM	Job No.	35-07150-000
Drawn by	BJS, TAT	Date	April 2007
			Sheet 17 of 68

S:\2007\07150\000\07150-000-C-51A7000-7350
 Plot Scale 1:20 09-12-2007 7:19:57 AM by BJS
 09-11-2007 11:49:38 AM by BJB