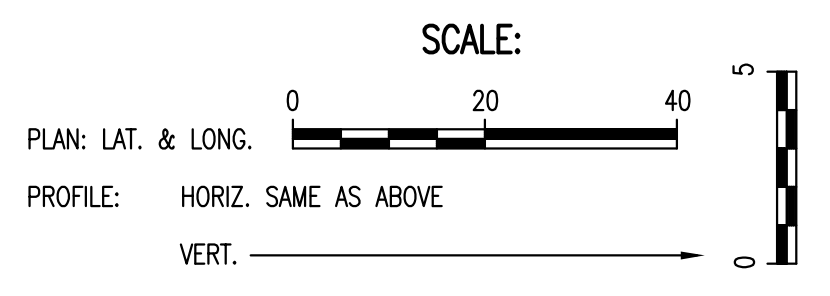
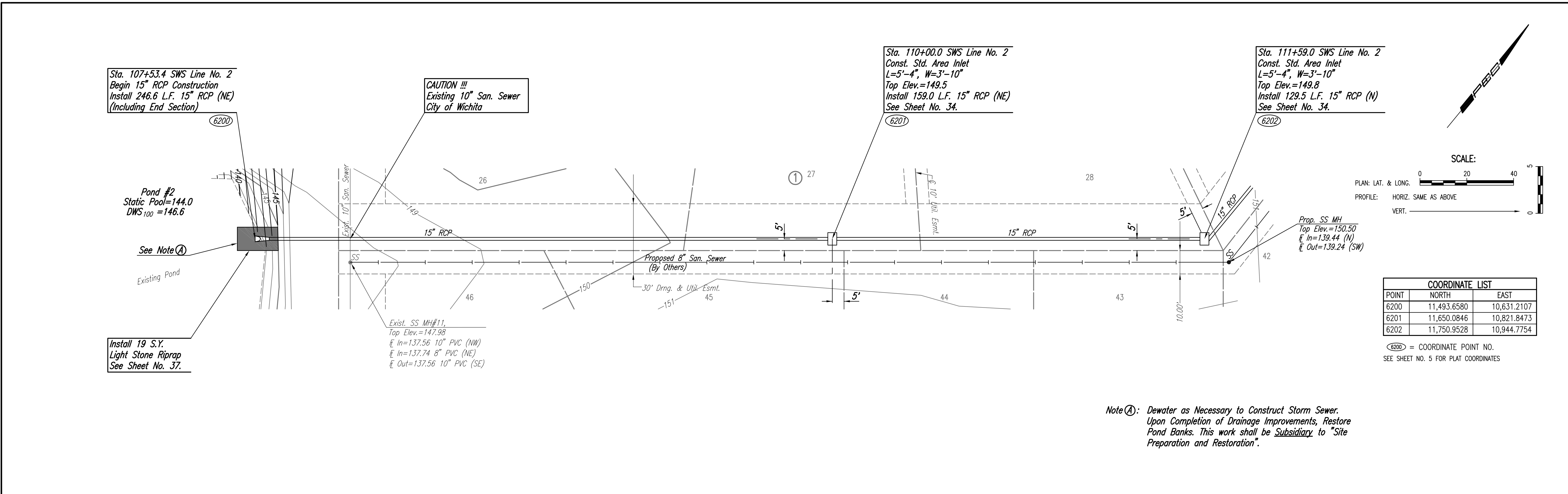


PLAN	CHECKED	CHECKED	BY	DATE

PROFILE	CHECKED	CHECKED	BY	DATE

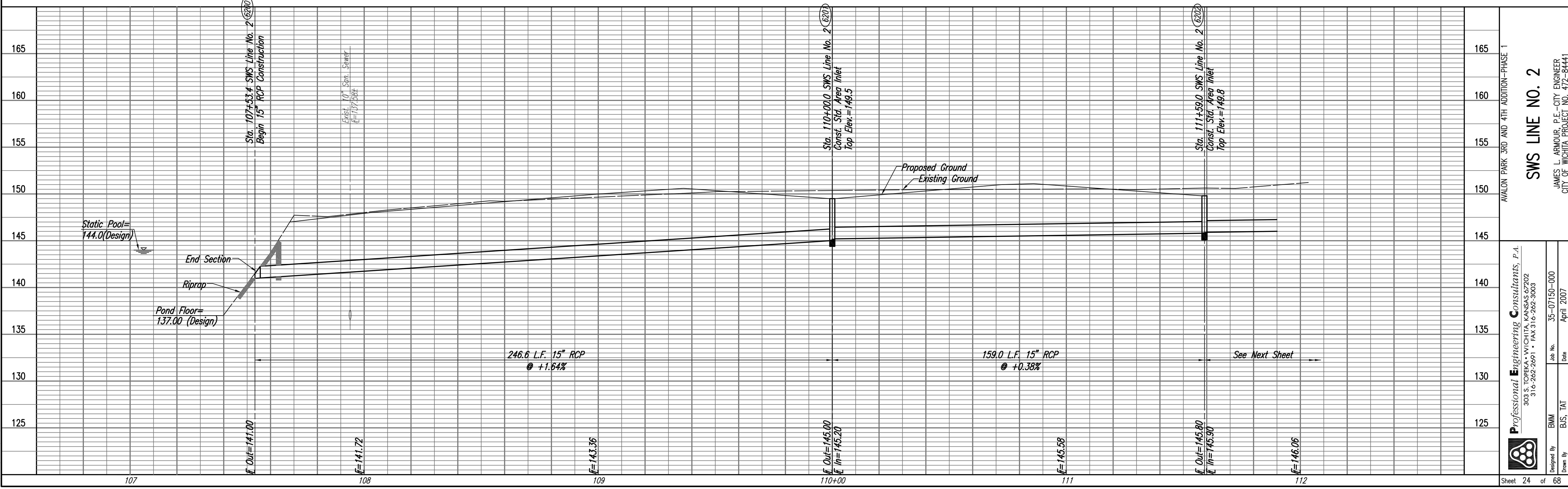
Scaled: 09-11-2007 2:06:52 PM by BDB
 Plot Scale: 1/20 09-12-2007 7:32:08 AM by BDB
 Q:\2007\07150\000\07150-000-C-SWSLINE2-1



COORDINATE LIST		
POINT	NORTH	EAST
6200	11,493.6580	10,631.2107
6201	11,650.0846	10,821.8473
6202	11,750.9528	10,944.7754

(6200) = COORDINATE POINT NO.
 SEE SHEET NO. 5 FOR PLAT COORDINATES

Note (A): Dewater as Necessary to Construct Storm Sewer.
 Upon Completion of Drainage Improvements, Restore
 Pond Banks. This work shall be Subsidiary to "Site
 Preparation and Restoration".



Professional Engineering Consultants, P.A.
 309 S. TORRENS, WICHITA, KANSAS 67202
 316-262-2291 • FAX 316-262-3063

Designed By: BMM
 Drawn By: BUS, FAT

Job No.: 35-07150-000
 Date: April 2007

SWS LINE NO. 2
 JAMES L. ARMOUR, P.E.-CITY ENGINEER
 CITY OF WICHITA PROJECT NO. 472-84441

Sheet 24 of 68