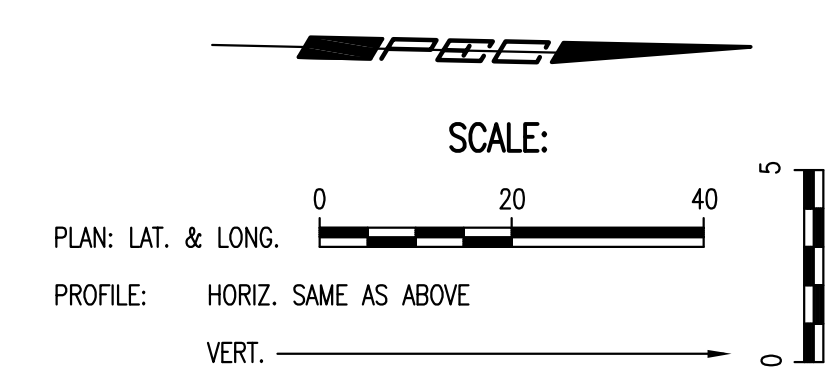
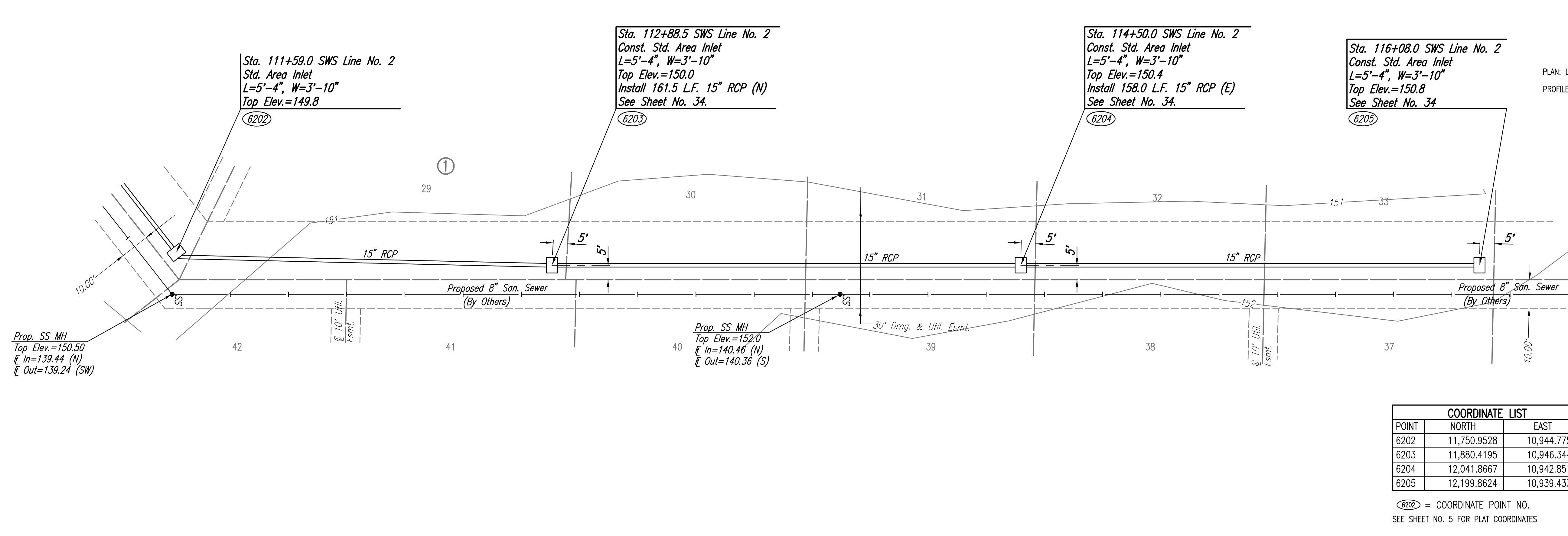


|      |         |    |      |
|------|---------|----|------|
| PLAN | CHECKED | BY | DATE |
|      | CHECKED |    |      |

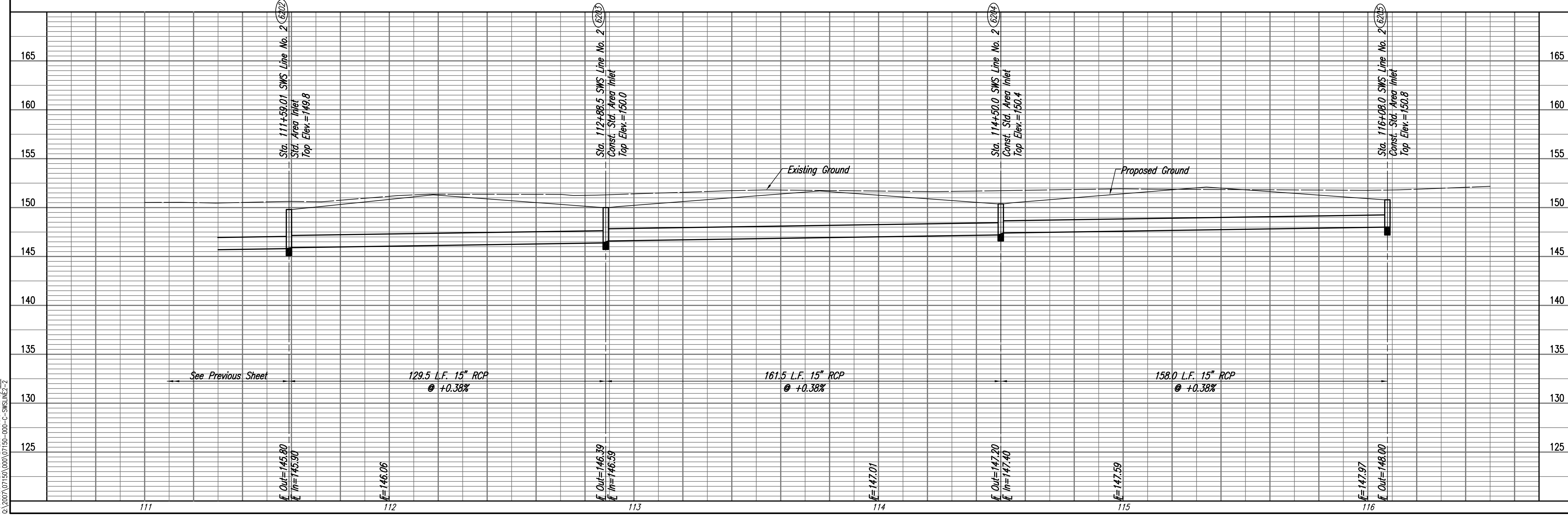
|         |         |    |      |
|---------|---------|----|------|
| PROFILE | CHECKED | BY | DATE |
|         | CHECKED |    |      |

Sowed: 09-11-2007 2:37:04 PM by BRB  
 Plot Scale: 1:20 09-12-2007 7:33:31 AM by BUS  
 0:\2007\07150\000\07150-000-C-SWSLINE2-2



| COORDINATE LIST |             |             |
|-----------------|-------------|-------------|
| POINT           | NORTH       | EAST        |
| 6202            | 11,750.9528 | 10,944.7754 |
| 6203            | 11,880.4195 | 10,946.3440 |
| 6204            | 12,041.8667 | 10,942.8514 |
| 6205            | 12,199.8624 | 10,939.4334 |

(6202) = COORDINATE POINT NO.  
 SEE SHEET NO. 5 FOR PLAT COORDINATES



AVALON PARK 3RD AND 4TH ADDITION-PHASE 1  
**SWS LINE NO. 2**  
 JAMES L. ARMOUR, P.E.-CITY ENGINEER  
 CITY OF WICHITA PROJECT NO. 472-84441

Professional Engineering Consultants, P.A.  
 303 S. TORRENS AVENUE, WICHITA, KANSAS 67202  
 316-262-2291 • FAX 316-262-3063

Job No. 35-07150-000  
 Date April 2007

Designed By BMM  
 Drawn By BUS, FAT

Sheet 25 of 68