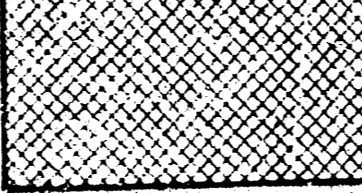
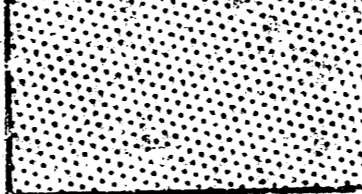
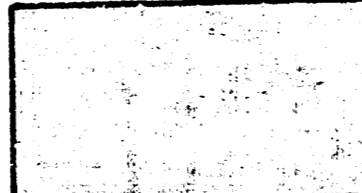
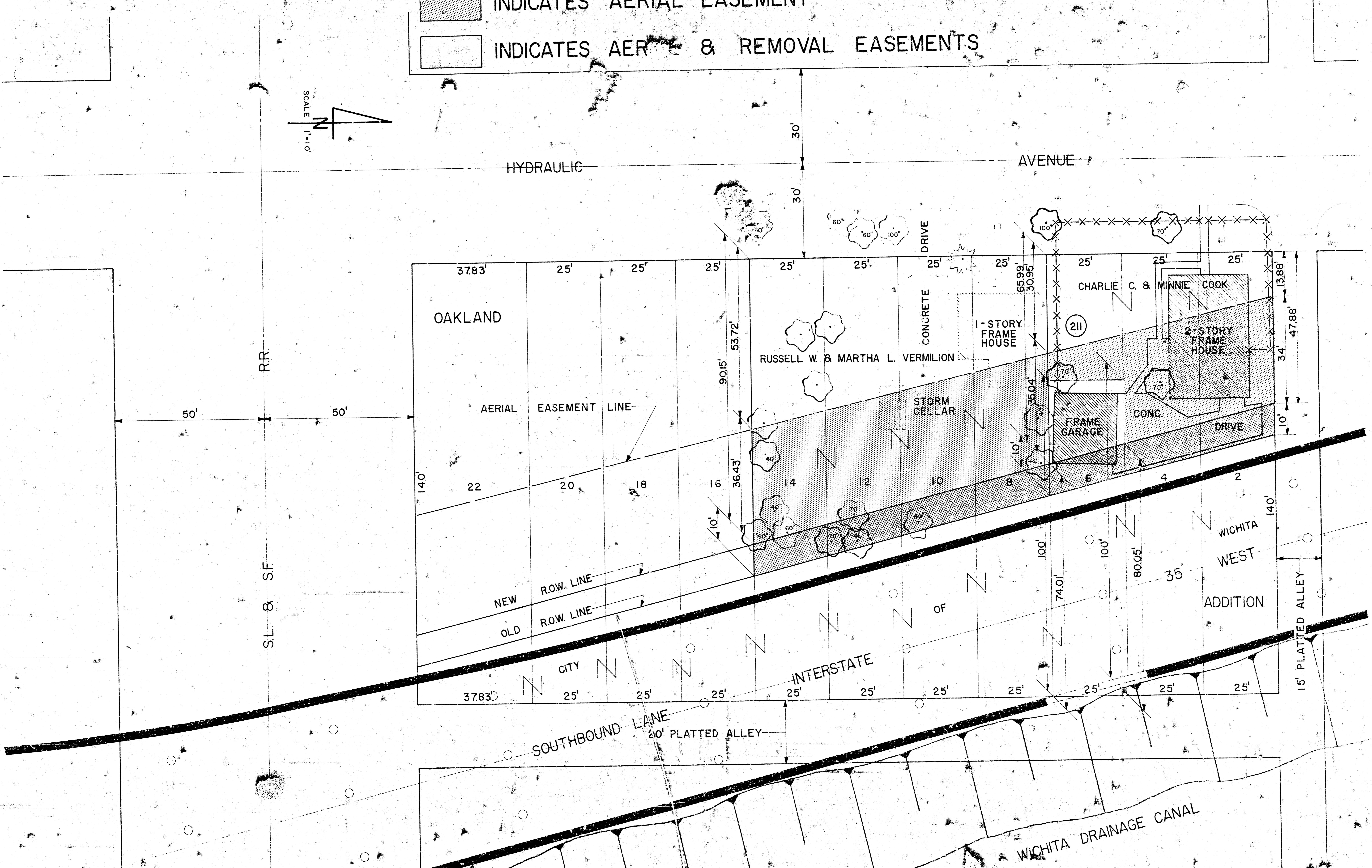
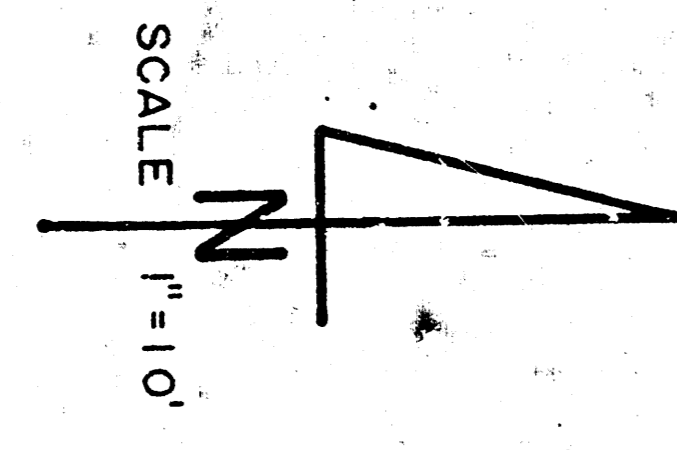


RIGHT-OF-WAY PLAT FOR INTERSTATE HIGHWAY ROUTE NO. 35 WEST
 CITY OF WICHITA, SEDGWICK COUNTY, KANSAS

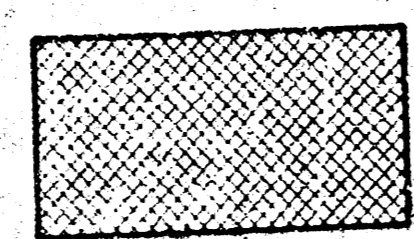
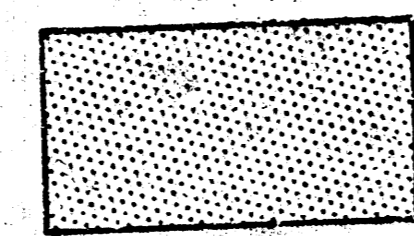
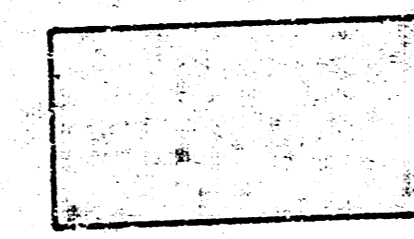
TRACT NO. 210 - PART OF LOTS 8, 10, 12, & 14, OAKLAND ADDITION. OWNER: RUSSELL W. & MARTHA L. VERMILION
 TRACT NO. 211 - PART OF LOTS 2, 4, & 6, OAKLAND ADDITION. OWNER: CHARLIE C. & MINNIE COOK

-  INDICATES RIGHT-OF-WAY
-  INDICATES AERIAL EASEMENT
-  INDICATES AERIAL & REMOVAL EASEMENTS



RIGHT-OF-WAY PLAT FOR INTERSTATE HIGHWAY ROUTE NO. 35 WEST
 CITY OF WICHITA, SEDGWICK COUNTY, KANSAS

TRACT NO. 210 - PART OF LOTS 8, 10, 12, & 14, OAKLAND ADDITION, OWNER: RUSSELL W. & MARTHA L. VERMILION
 TRACT NO. 211 - PART OF LOTS 2, 4, & 6, OAKLAND ADDITION, OWNER: CHARLIE C. & MINNIE COOK

-  INDICATES RIGHT-OF-WAY
-  INDICATES AERIAL EASEMENT
-  INDICATES AERIAL & REMOVAL EASEMENTS

