

STATE OF KANSAS
STATE HIGHWAY COMMISSION

PLAN AND PROFILE OF PROPOSED
STATE HIGHWAY

FEDERAL AID PROJECT
SEDGWICK COUNTY
INTERSTATE
ACCESS CONTROL

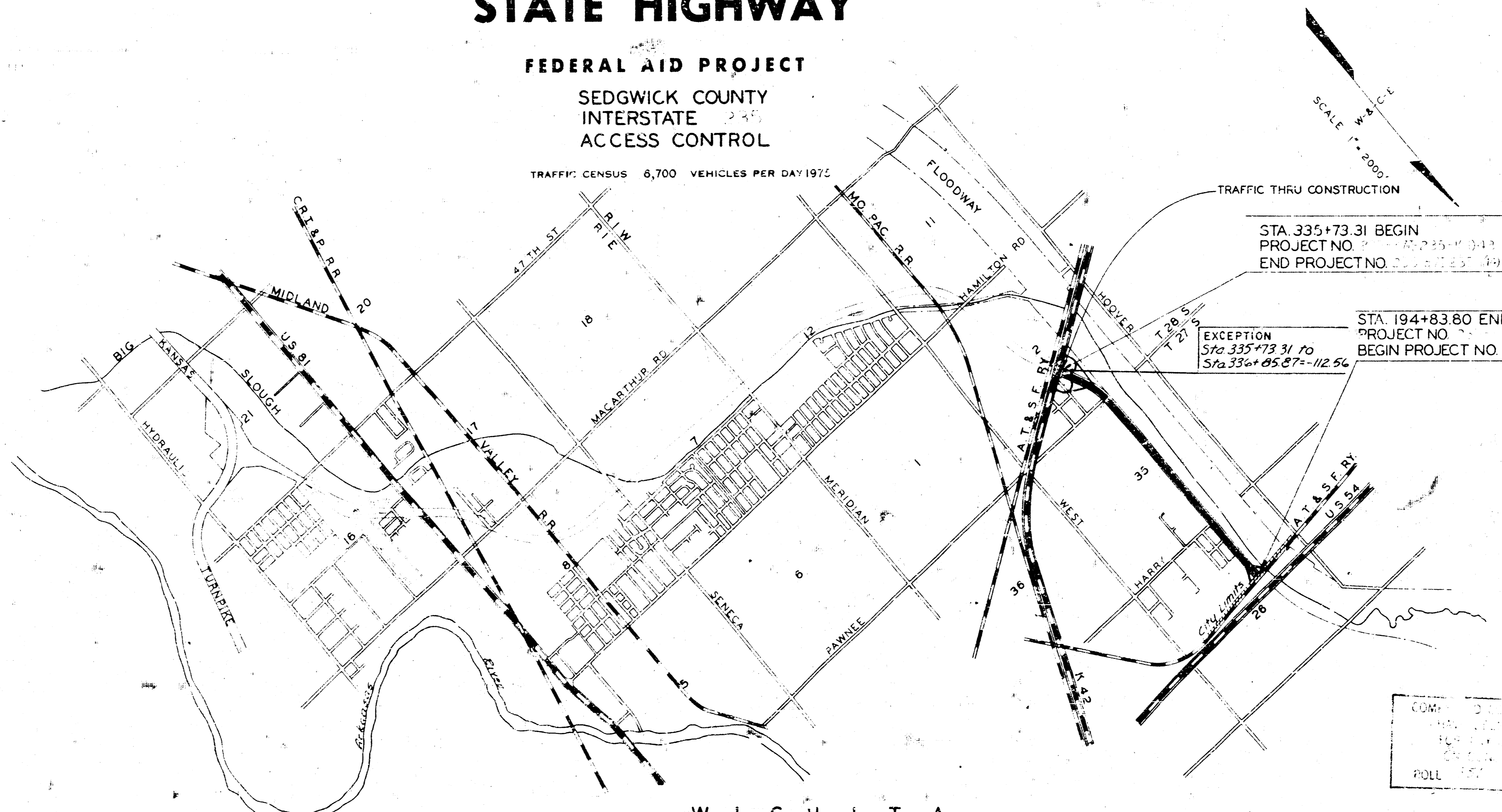
TRAFFIC CENSUS 6,700 VEHICLES PER DAY 1972

STATE	NO.	DATE
KANSAS	1358	1958

PROJ NO. 4-1
GRADING

INDEX OF SHEETS

- 1. PLAN AND PROFILE OF PROPOSED STATE HIGHWAY
- 2. GRADE ELEVATION
- 3. CROSS SECTIONS
- 4. CONSTRUCTION DETAILS
- 5. TRAFFIC THRU CONSTRUCTION
- 6. EXCEPTIONS
- 7. CITY LIMITS
- 8. RAILROADS
- 9. POWER LINES
- 10. TELEPHONE OR TELEGRAPH LINES
- 11. MARSH
- 12. BRIDGES
- 13. TRENCHES
- 14. GULVERTS
- 15. DRAINAGE
- 16. FENCE LINES
- 17. PROPERTY LINES
- 18. TOWNSHIP LINES
- 19. COUNTY LINES
- 20. CITY LIMITS



STA 335+73.31 BEGIN
PROJECT NO. 4-1
END PROJECT NO. 4-1

EXCEPTION
Sta 335+73.31 to
Sta 335+85.87 = 12.56
STA 194+83.80 END
PROJECT NO. 4-1
BEGIN PROJECT NO. 4-1

W I C H I T A

CONVENTIONAL SIGNS

COUNTY LINE	RETAINING WALL	
CITY, VILLAGE OR BOROUGH	BASE OR SURVEY LINE	
STATE OR NATIONAL LINE	LEVEE	
TOWNSHIP LINE	GULVERTS	
SECTION LINE	DROP INLETS	
SHED LINE	TRAILER POLE	
FENCE LINE	POWER LINE	
YARD FENCE	TELEPHONE OR TELEGRAPH LINE	
FENCED PROPERTY	MARSH	
RIGHT OF WAY LINE	BRIDGE	
TRAVELLED WAY	TREES	
RAILROADS	GRADE ELEVATION	
ACCESS CONTROL	CITY LIMITS	

GROSS LENGTH OF PROJECT 9,295.18 FT.
EXCEPTIONS 112.56
ADDITIONS 0

NET LENGTH OF PROJECT 9,182.62 FT. 1.739 MILES
NET LENGTH OF BRIDGES 0.00 FT. 0.000 MILES
NET LENGTH OF ROAD 9,182.62 FT. 1.739 MILES

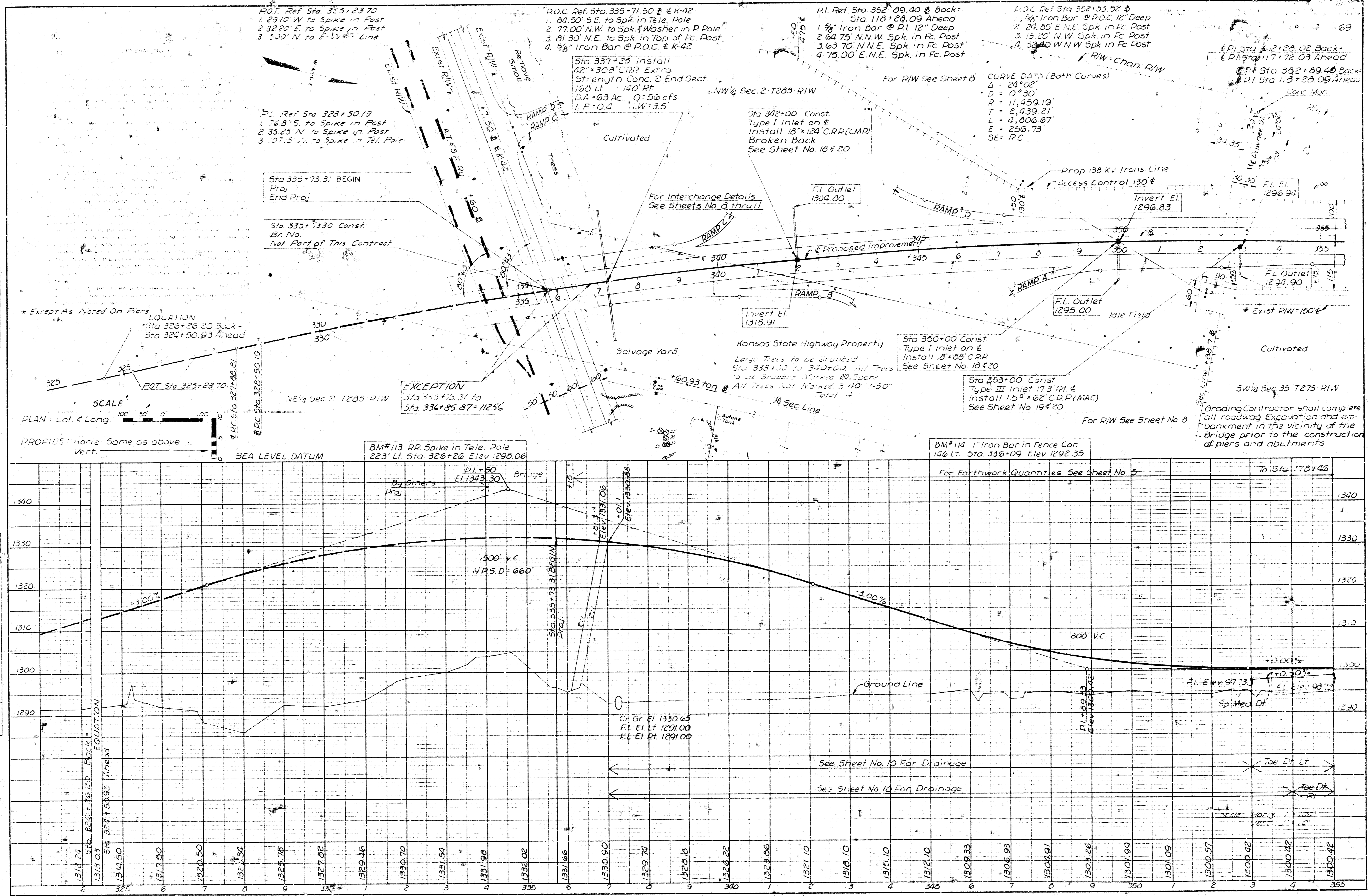
EQUATIONS
STA. 375+95.48 BACK = STA. 142+11.24 AHEAD
STA. 192+46.88 BACK = STA. 192+46.43 AHEAD

PLANS PREPARED BY: DATE Oct 28, 1958
WILSON & COMPANY ENGINEERS

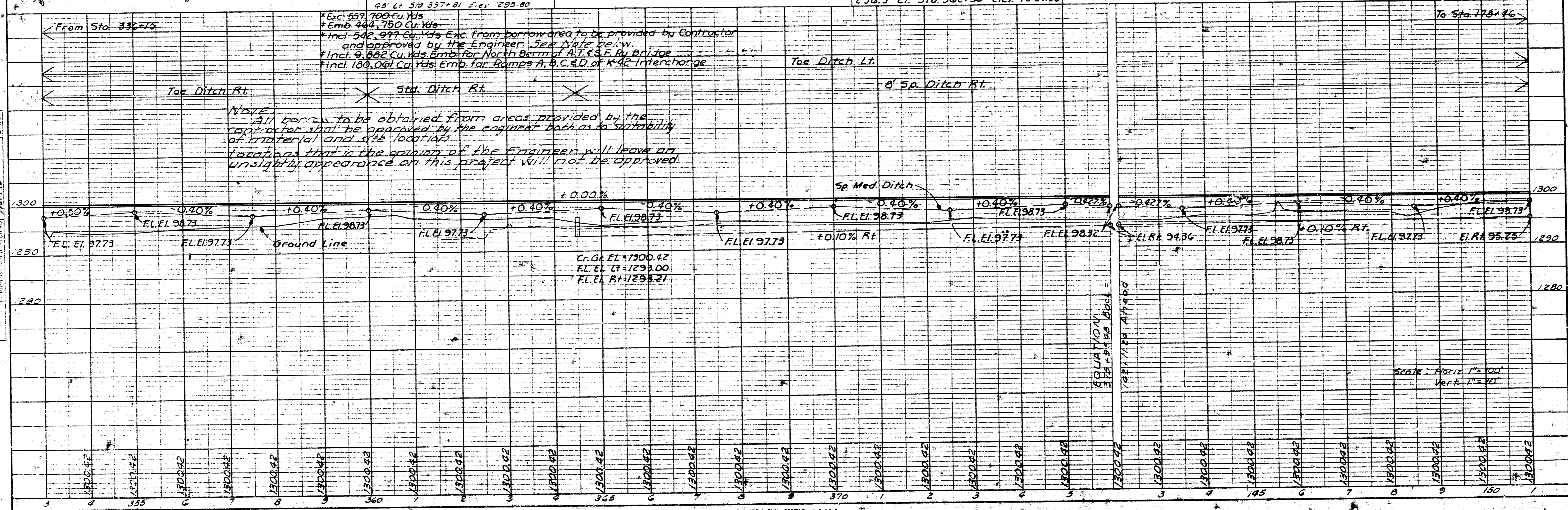
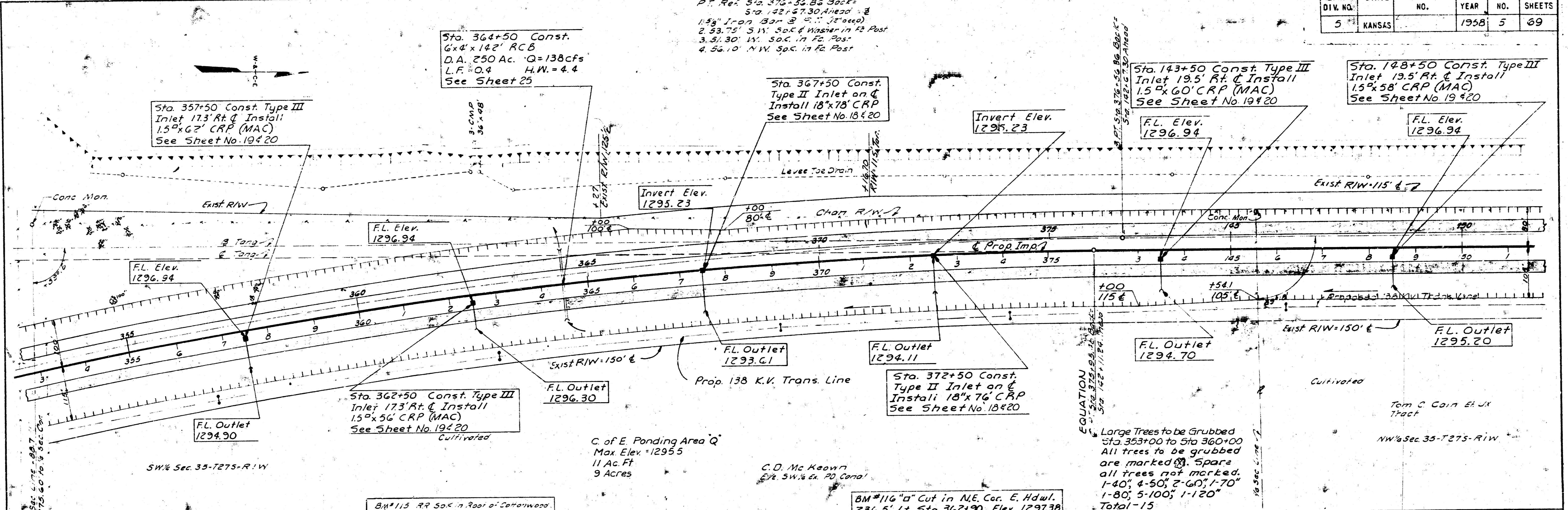
ENGINEER OF DESIGN STATE HIGHWAY COMMISSION OF KANSAS	ENGINEER BUREAU OF PUBLIC ROADS DEPARTMENT OF COMMERCE
STATE HIGHWAY ENGINEER STATE HIGHWAY COMMISSION OF KANSAS	DISTRICT ENGINEER BUREAU OF PUBLIC ROADS DEPARTMENT OF COMMERCE

PLAN	DATE	BY	CHECKED
10/1/57	10/1/57	W. J. ...	W. J. ...
10/1/57	10/1/57	W. J. ...	W. J. ...
10/1/57	10/1/57	W. J. ...	W. J. ...
10/1/57	10/1/57	W. J. ...	W. J. ...

PROFILE	DATE	BY	CHECKED
10/1/57	10/1/57	W. J. ...	W. J. ...
10/1/57	10/1/57	W. J. ...	W. J. ...
10/1/57	10/1/57	W. J. ...	W. J. ...
10/1/57	10/1/57	W. J. ...	W. J. ...

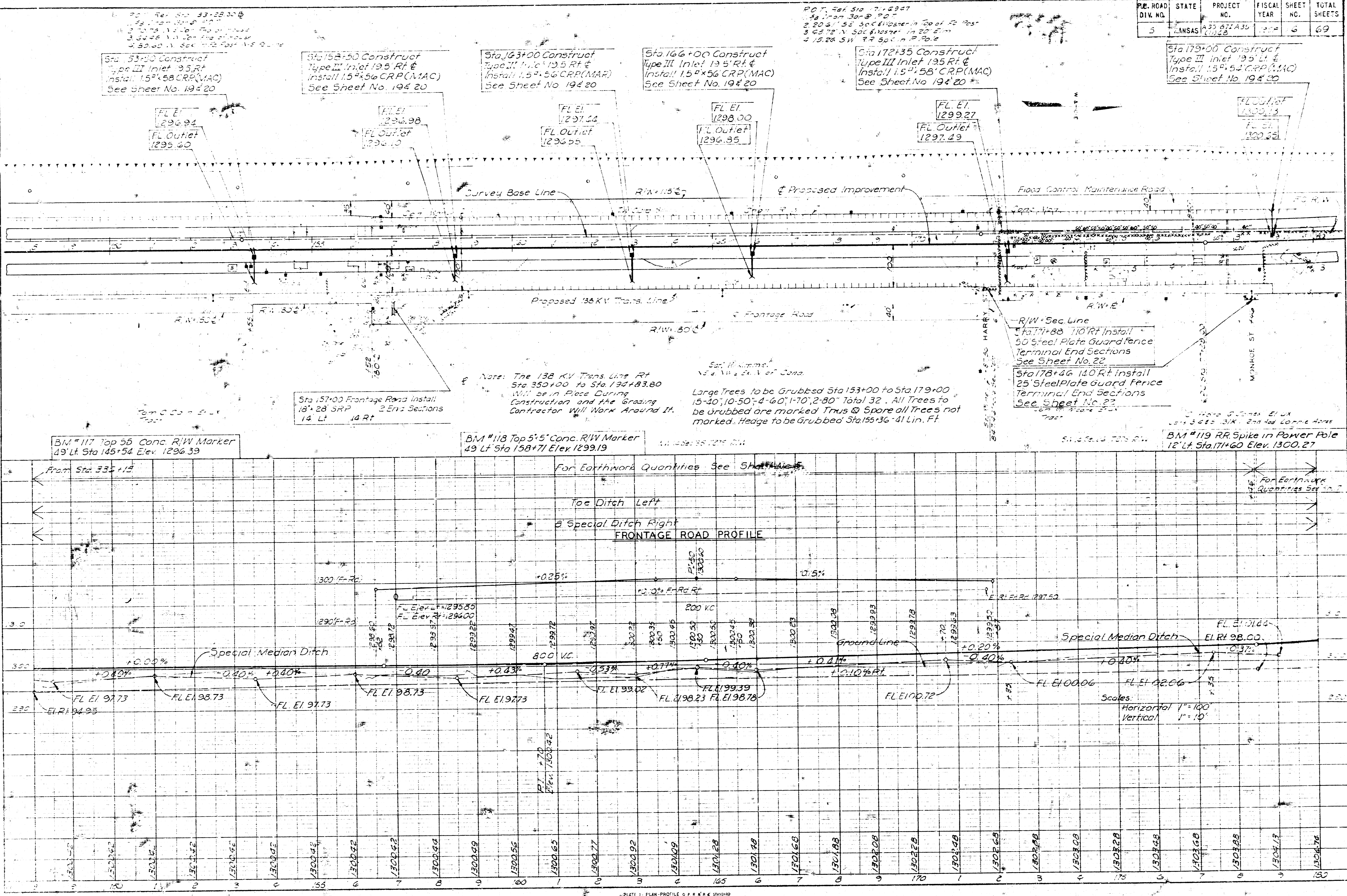


PUB. ROAD DIV. NO.	STATE	PROJECT NO.	FISCAL YEAR	SHEET NO.	TOTAL SHEETS
5	KANSAS		1958	5	69



PLAN
 CHECKED BY: [Signature]
 DATE: 12/1/58
 NO. 19420

PROFILE
 CHECKED BY: [Signature]
 DATE: 12/1/58
 NO. 19420



P.R. ROAD DIV. NO.	STATE	PROJECT NO.	FISCAL YEAR	SHEET NO.	TOTAL SHEETS
5	KANSAS	33 071 A35	1954	5	69

PLAN
 SHEET NO. 5
 TOTAL SHEETS 69

PLATE 1 - PLAN PROFILE OF FRONTAGE ROAD
 PREPARED BY THE ENGINEER

