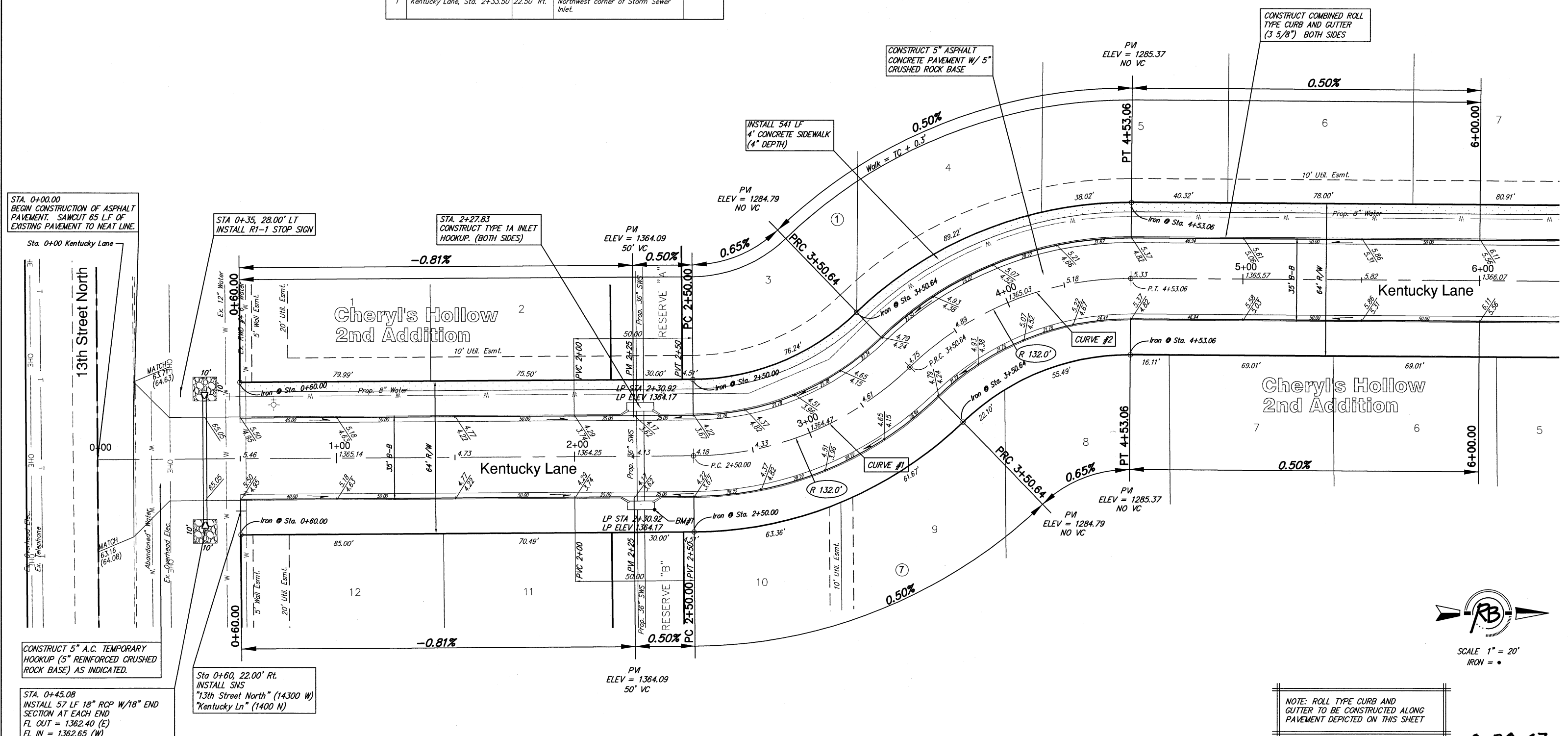


Subdivision Bench Marks

No.	Street and Station	From CL	Description	Elevation
1	Kentucky Lane, Sta. 2+33.50	22.50' Rt.	Northwest corner of Storm Sewer Inlet.	



STA. 0+00.00  
BEGIN CONSTRUCTION OF ASPHALT PAVEMENT. SAWCUT 65 L.F OF EXISTING PAVEMENT TO NEAT LINE.

STA 0+35, 28.00' LT  
INSTALL R1-1 STOP SIGN

STA. 2+27.83  
CONSTRUCT TYPE 1A INLET HOOKUP. (BOTH SIDES)

CONSTRUCT 5" ASPHALT CONCRETE PAVEMENT W/ 5" CRUSHED ROCK BASE

INSTALL 541 LF 4' CONCRETE SIDEWALK (4" DEPTH)

CONSTRUCT COMBINED ROLL TYPE CURB AND GUTTER (3 5/8") BOTH SIDES

CONSTRUCT 5" A.C. TEMPORARY HOOKUP (5" REINFORCED CRUSHED ROCK BASE) AS INDICATED.

STA. 0+45.08  
INSTALL 57 LF 18" RCP W/18" END SECTION AT EACH END FL OUT = 1362.40 (E) FL IN = 1362.65 (W) INSTALL 11 SY LIGHT STONE RIP-RAP AS INDICATED ON EACH END. SEE SEC. 304 OF STD. SPECS. REGRADE 50 L.F. DITCH TO THE EAST @ 0.50% MIN. TO MATCH EXISTING DITCH ON EACH END OF THE PIPE.

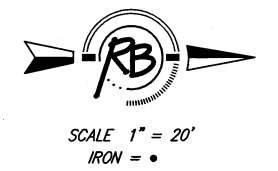
Sta 0+60, 22.00' Rt.  
INSTALL SNS  
"13th Street North" (14300 W)  
"Kentucky Ln" (1400 N)

**CURVE #1**  
Curve Data Based on Centerline  
Rad. = 132' Delta = 43°40'57" Tangent = 52.91'  
Arc = 100.64' L.C. = 98.32' Def/Fl. = 13.02141 Min.

Station	Arc	FACE CHORD LENGTHS		Defl.	T. Defl.
		B Lt.	B Rt.		
2+50.00	-	-	-	0°00'00"	0°00'00"
2+75.00	25.00'	20.23'	29.69'	5°25'32"	5°25'32"
3+00.00	25.00'	20.23'	29.69'	10°51'04"	10°42'44"
3+25.00	25.00'	20.23'	29.69'	5°25'32"	16°16'36"
3+50.00	25.00'	20.23'	29.69'	5°25'32"	21°42'08"
3+50.64	0.64'	0.52'	0.76'	0°08'20"	21°50'28"

**CURVE #2**  
Curve Data Based on Centerline  
Rad. = 132' Delta = 44°27'22" Tangent = 53.94'  
Arc = 102.42' L.C. = 99.87' Def/Fl. = 13.02171 Min.

Station	Arc	FACE CHORD LENGTHS		Defl.	T. Defl.
		B Lt.	B Rt.		
3+50.64	-	-	-	0°00'00"	0°00'00"
3+75.00	24.36'	28.93'	19.72'	5°17'12"	5°17'12"
4+00.00	25.00'	29.69'	20.23'	5°25'32"	10°42'44"
4+25.00	25.00'	29.69'	20.23'	5°25'32"	16°08'16"
4+50.00	25.00'	29.69'	20.23'	5°25'32"	21°33'48"
4+53.06	3.06'	3.64'	2.48'	0°39'51"	22°7'39"



NOTE: ROLL TYPE CURB AND GUTTER TO BE CONSTRUCTED ALONG PAVEMENT DEPICTED ON THIS SHEET

8-28-07

Cheryl's Hollow 2nd, Phase 1  
Kentucky Lane  
WICHITA, KANSAS

**Ruggles & Bohm, P.A.**  
Engineering, Surveying, Land Planning

924 North Main  
Wichita, Kansas 67203  
www.rbkansas.com

(316) 264-8008  
(316) 284-4621 fax  
E-mail: info@rbkansas.com

DESIGN: KWL  
DRAWN: MLP  
REVIEW: [Blank]  
UTILITY: [Blank]

DRAWING FILE: base {Kent1}  
PROJECT NUMBER: 472-84544  
DATE: Aug. 7, 2007

SHEET: 5 OF 45