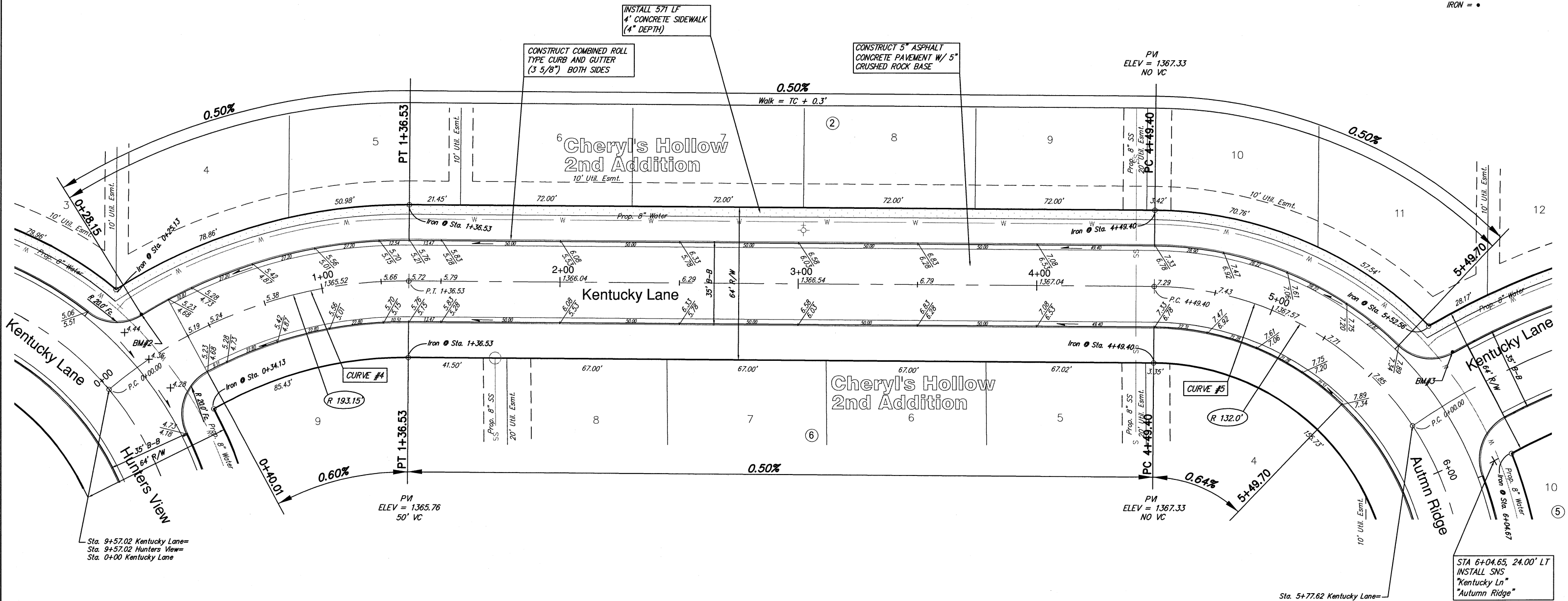
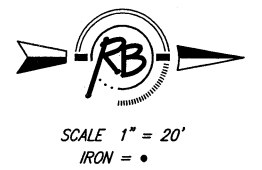


Subdivision Bench Marks

No.	Street and Station	From CL	Description	Elevation
2	Kentucky Lane, Sta. 9+32.65	32.50' Lt.	Northwest end of Curb Return at the Int. of Kentucky, Kentucky & Hunters View.	
3	Kentucky Lane, Sta. 5+64.68	32.25' Lt.	Northwest end of Curb Return at the Int. of Kentucky, Kentucky & Autumn Ridge.	



CURVE #4
Curve Data Based on Centerline
Rad. = 193.15' Delta = 40°29'56\"/>

Station	Arc	FACE CHORD LENGTHS		Defl.	T. Defl.
		B Lt.	B Rt.		
0+00.00	-	-	-	0°00'00\"/>	

CURVE #5
Curve Data Based on Centerline
Rad. = 132' Delta = 89°13'35\"/>

Station	Arc	FACE CHORD LENGTHS		Defl.	T. Defl.
		B Lt.	B Rt.		
4+49.40	-	-	-	0°00'00\"/>	

NOTE: ROLL TYPE CURB AND GUTTER TO BE CONSTRUCTED ALONG PAVEMENT DEPICTED ON THIS SHEET

8-28-07

Cheryl's Hollow 2nd, Phase 1
Kentucky Lane
WICHITA, KANSAS

Ruggles & Bohm, P.A.
Engineering, Surveying, Land Planning
924 North Main
Wichita, Kansas 67203
www.rbkansas.com

DESIGN: KWL
DRAWN: MLP
REVIEW: [blank]
UTILITY: [blank]
DATE: Aug. 7, 2007

DRAWING FILE: base {Kent3}

PROJECT NUMBER: 472-84544

SHEET: 7 OF 45