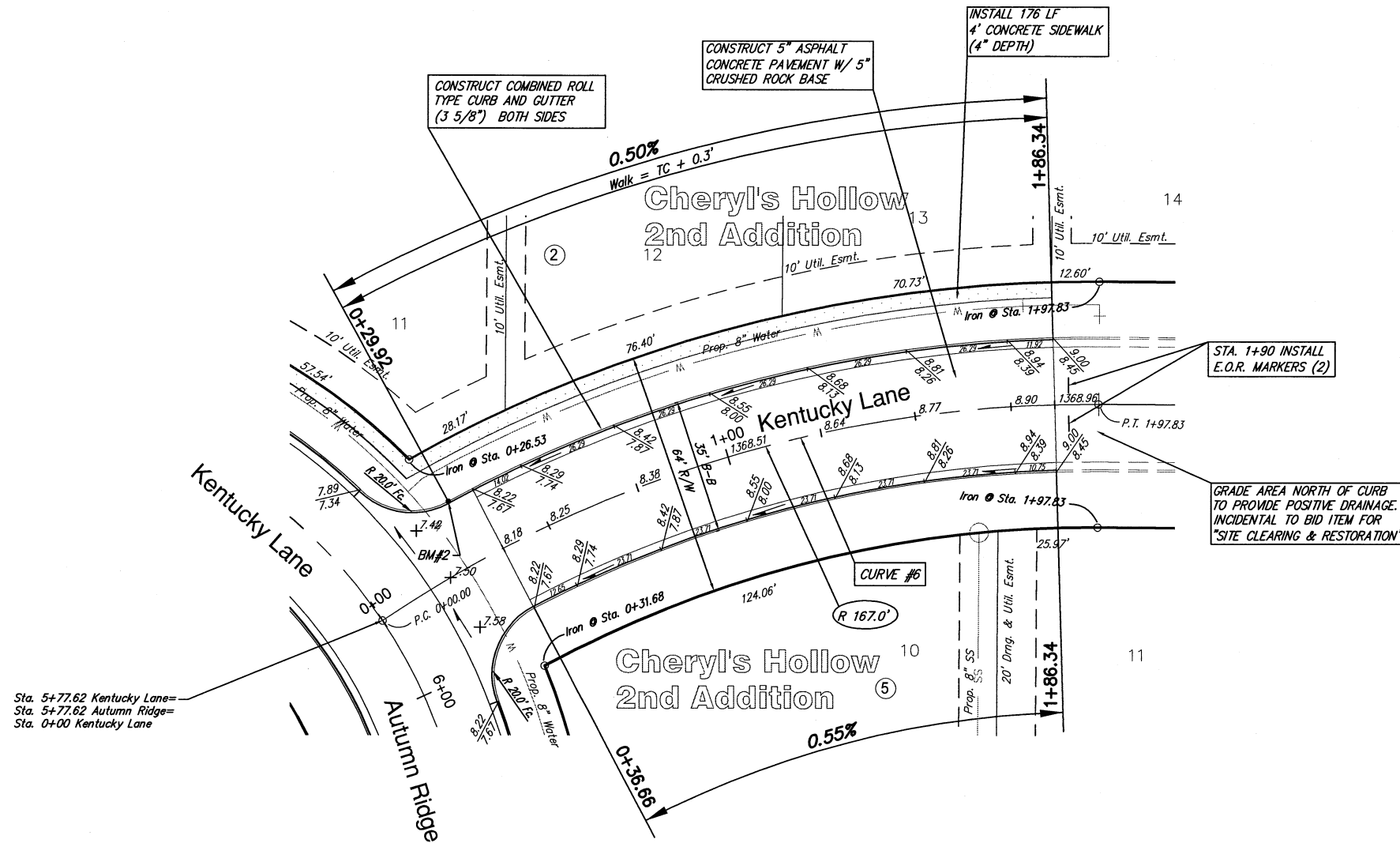


Subdivision Bench Marks

No.	Street and Station	From CL	Description	Elevation
2	Kentucky Lane, Sta. 5+64.68	32.25' Lt.	Northwest end of Curb Return at the Int. of Kentucky, Kentucky & Autumn Ridge.	



Sta. 5+77.62 Kentucky Lane=
Sta. 5+77.62 Autumn Ridge=
Sta. 0+00 Kentucky Lane

CURVE #6
Curve Data Based on Centerline
Rad. = 330.05' Delta = 32°20'52" Tangent = 95.73'
Arc = 186.34' L.C. = 183.87' Def./ft. = 5.20786 Min.

Station	Arc	FACE CHORD LENGTHS		Defl.	T. Defl.
		8 Lt.	8 Rt.		
0+00.00	-	-	-	0°00'00"	0°00'00"
0+25.00	25.00'	26.89'	23.10'	2°10'12"	2°10'12"
0+50.00	25.00'	26.89'	23.10'	2°10'12"	4°20'24"
0+75.00	25.00'	26.89'	23.10'	2°10'12"	6°30'36"
1+00.00	25.00'	26.89'	23.10'	2°10'12"	8°40'48"
1+25.00	25.00'	26.89'	23.10'	2°10'12"	10°50'59"
1+50.00	25.00'	26.89'	23.10'	2°10'12"	13°01'11"
1+75.00	25.00'	26.89'	23.10'	2°10'12"	15°11'23"
1+86.34	11.34'	12.20'	10.48'	0°59'03"	16°10'26"



SCALE 1" = 20'
IRON = •

NOTE: ROLL TYPE CURB AND GUTTER TO BE CONSTRUCTED ALONG PAVEMENT DEPICTED ON THIS SHEET

8-28-07

Cheryl's Hollow 2nd, Phase 1
Kentucky Lane
WICHITA, KANSAS

Ruggles & Bohm, P.A.
Engineering, Surveying, Land Planning

924 North Main
Wichita, Kansas 67203
www.rbkansas.com

(316) 264-8008
(316) 264-4621 fax
E-mail: info@rbkansas.com

DESIGN: KWL
DRAWN: MLP
REVIEW: [blank]
UTILITY: [blank]

PROJECT NUMBER: 472-84544
DATE: Aug. 7, 2007

RB JOB SHEET

SHEET 9 OF 45