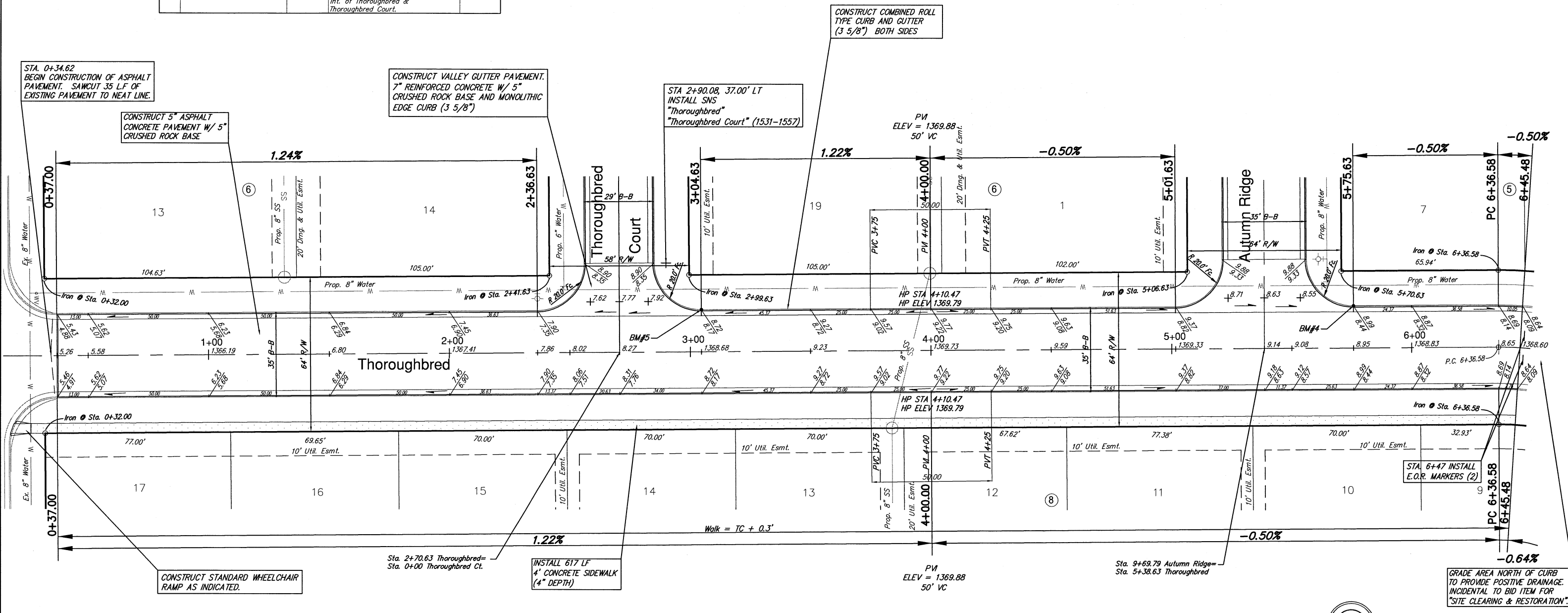


Subdivision Bench Marks

No.	Street and Station	From CL	Description	Elevation
4	Thoroughbred, Sta. 5+75.63	17.50' Lt.	Northwest end of Curb Return at the Int. of Thoroughbred & Autumn Ridge.	
5	Thoroughbred, Sta. 3+04.63	17.50' Lt.	Northwest end of Curb Return at the Int. of Thoroughbred & Thoroughbred Court.	



SCALE 1" = 20'  
IRON = •

NOTE: ROLL TYPE CURB AND GUTTER TO BE CONSTRUCTED ALONG PAVEMENT DEPICTED ON THIS SHEET

8-28-07

Chery's Hollow 2nd, Phase 1 Thoroughbred WICHITA, KANSAS		DESIGN KWL	DRAWN MLP	REVIEW KWL	SHEET 10 OF 45
Ruggles & Bohm, P.A. Engineering, Surveying, Land Planning		924 North Main Wichita, Kansas 67203 www.rbkansas.com		(316) 264-8008 (316) 264-4621 fax E-mail: info@rbkansas.com	
DRAWING FILE base {Thoro}	PROJECT NUMBER 472-84544	DATE Aug. 7, 2007			