




SCALE: 1" = 80'

 AREAS TO BE GRADED. FILL ONLY WITH DIRT FROM STOCKPILES. NOT ALL AREAS HAVE TO BE GRADED.

NOTE: EXISTING STOCKPILES ARE TO BE REMOVED AND SPREAD IN INDICATED AREAS ON SHEETS 24 & 25. LOTS CAN BE FILLED TO THE NEAREST FOOT BUT LOT CORNERS AND STREETS SHOULD BE CONSTRUCTED TO THE NEAREST TENTH.

SHADED AREAS ARE TO BE FILLED TO THE EXTENT POSSIBLE WITH THE DIRT AVAILABLE FROM STOCKPILES. AREAS THAT ARE NOT GRADED WITH THIS PROJECT WILL BE COMPLETED WITH A FUTURE STORMWATER DRAIN PROJECT. PROVIDE POSITIVE DRAINAGE IN ALL SITUATIONS.

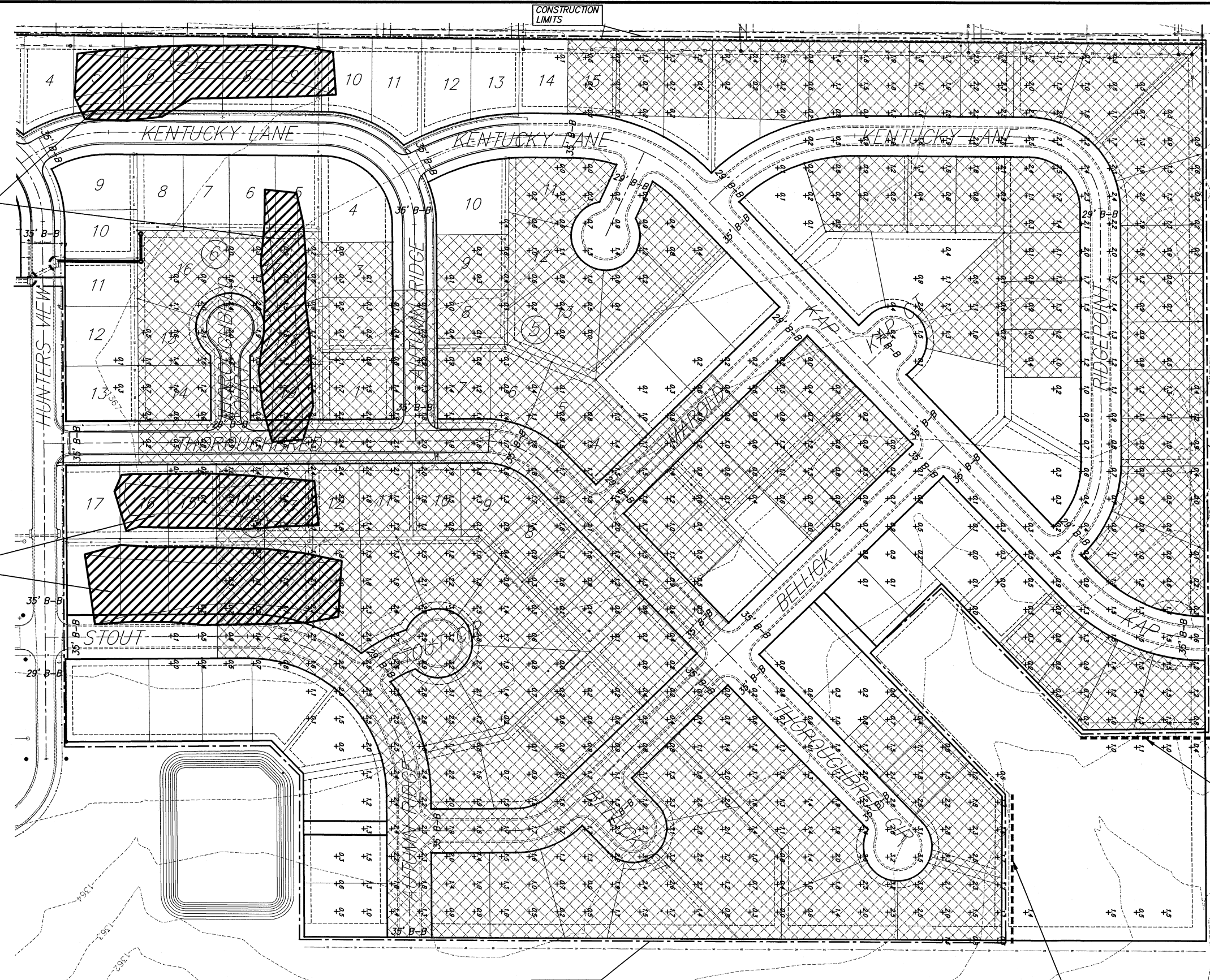
CONSTRUCTION LIMITS

188 L.F. SILT FENCE (ONLY IF AREA IS DISTURBED)

8-28-07

NOTE: ALL DISTURBED AREAS TO SEEDED, FERTILIZED AND MULCHED PER CITY OF WICHITA SPECIFICATIONS. CONTRACTOR TO MAINTAIN BMP'S PLACED BY PREVIOUS PROJECTS.

216 L.F. SILT FENCE (ONLY IF AREA IS DISTURBED)

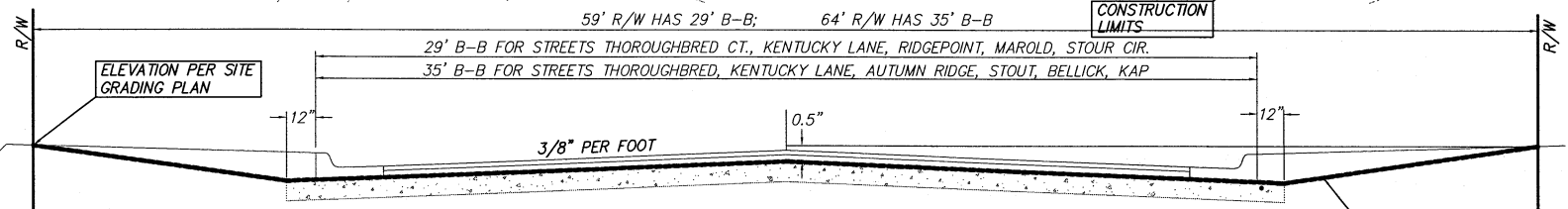


STOCKPILE TO BE MOVED

STOCKPILE TO BE MOVED

CONSTRUCTION LIMITS

CONSTRUCTION LIMITS



TYPICAL R/W GRADING SECTION

		Cheryl's Hollow 2nd Addition Stockpile Relocation Detail WICHITA, KANSAS	
		Ruggles & Bohm, P.A. Engineering, Surveying, Land Planning	
924 North Main Wichita, Kansas 67203 www.rbkansas.com	(316) 264-8008 (316) 264-4621 fax E-mail: info@rbkansas.com	DESIGN KWL	DRAWN MLP
DRAWING FILE bose [Grading Plan 2]		PROJECT NUMBER 472-84544	DATE Aug. 7, 2007
		REVIEW UTILITY	SHEET 25 OF 45