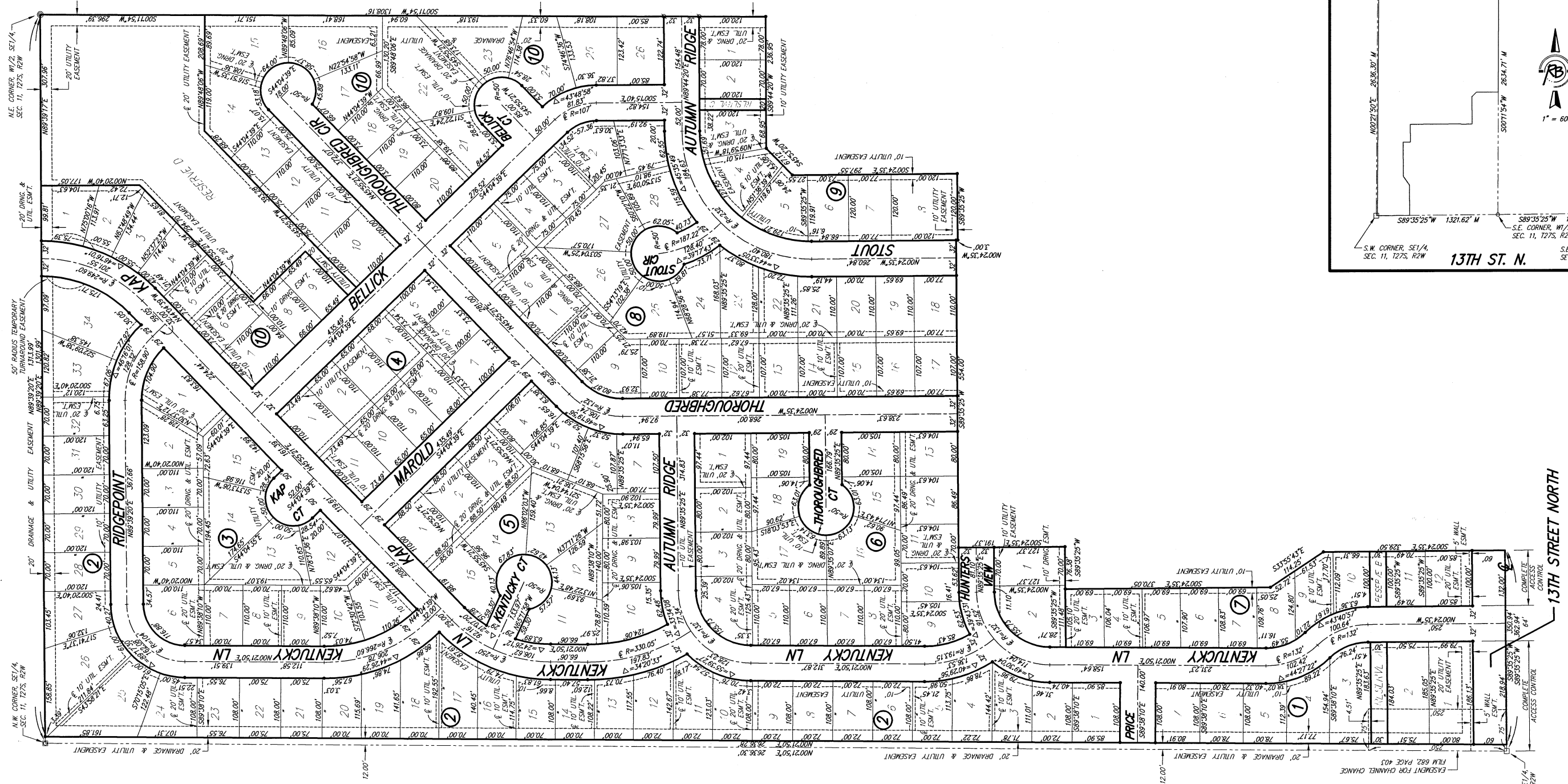
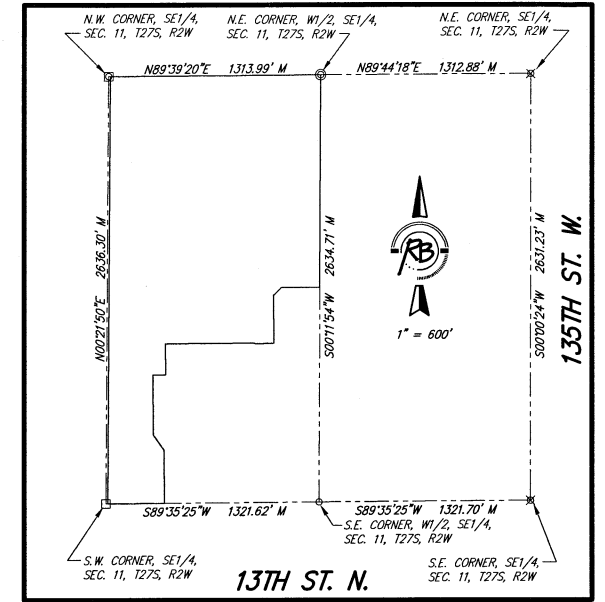


# CHERYL'S HOLLOW SECOND ADDITION

Wichita, Sedgwick County, Kansas



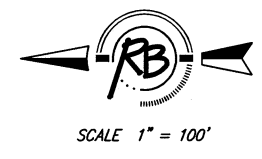
- SURVEY MARKER LEGEND**
- = STONE (FOUND)
  - ⊠ = NAIL IN CENTER OF STONE (FOUND)
  - = 1/2" IRON PIPE (FOUND)
  - ⊙ = 1" IRON PIPE (FOUND)
  - ⊗ = 1/2" REBAR W/BAUGHMAN CAP (FOUND)
  - ⊗ = 3/4" IRON PIPE W/SEDGWICK COUNTY ALUMINUM CAP (FOUND)
  - = 5/8" REBAR W/R&B CAP (SET)

**BUILDING SETBACK LINES PER ZONING REGULATIONS**

BENCH MARK: COW BENCHMARK AT THE SOUTHWEST CORNER OF INTERSECTION OF 135TH ST. W. AND 13TH ST. N., EAST SIDE OF CONC. BASE FOR HLP 30± S. OF CENTER LINE AND 35± W. OF CENTER LINE ELEV.=1355.65 (M.S.L.)

ON-SITE BENCH MARK: R.R. SPIKE ON NORTH FACE OF HIGHLINE POWER POLE 131 FEET WEST AND 28 FEET SOUTH OF THE S.E. CORNER, W1/2, SE1/4, SEC. 11, T27S, R2W ELEV.=1365.16 (M.S.L.)

BLOCK	LOT NO.	ELEVATION (M.G.V.D.)
7	1, 2, 3, 4, 5, 6, 7, 8, 9, 10, 11, 12	1364.5
9	1, 2, 3, 4, 5, 6, 7, 8	1363.0
10	1, 2, 3, 4, 5, 6, 7, 8, 9, 10, 11, 12, 13, 14, 15	1364.0



8-28-07

**CHERYL'S HOLLOW 2ND ADDITION  
FINAL PLAT  
WICHITA, KANSAS**

**Ruggles & Bohm, P.A.**  
Engineering, Surveying, Land Planning

924 North Main  
Wichita, Kansas 67203  
www.rbkansas.com

(316) 264-8008  
(316) 264-4621 fax  
E-mail: info@rbkansas.com

DESIGN: KWL  
DRAWN: MLP  
REVIEW: [blank]  
UTILITY: [blank]  
DATE: Aug. 7, 2007

DRAWING FILE: Base {Final Plat}

PROJECT NUMBER: 472-84544

SHEET 45 of 45