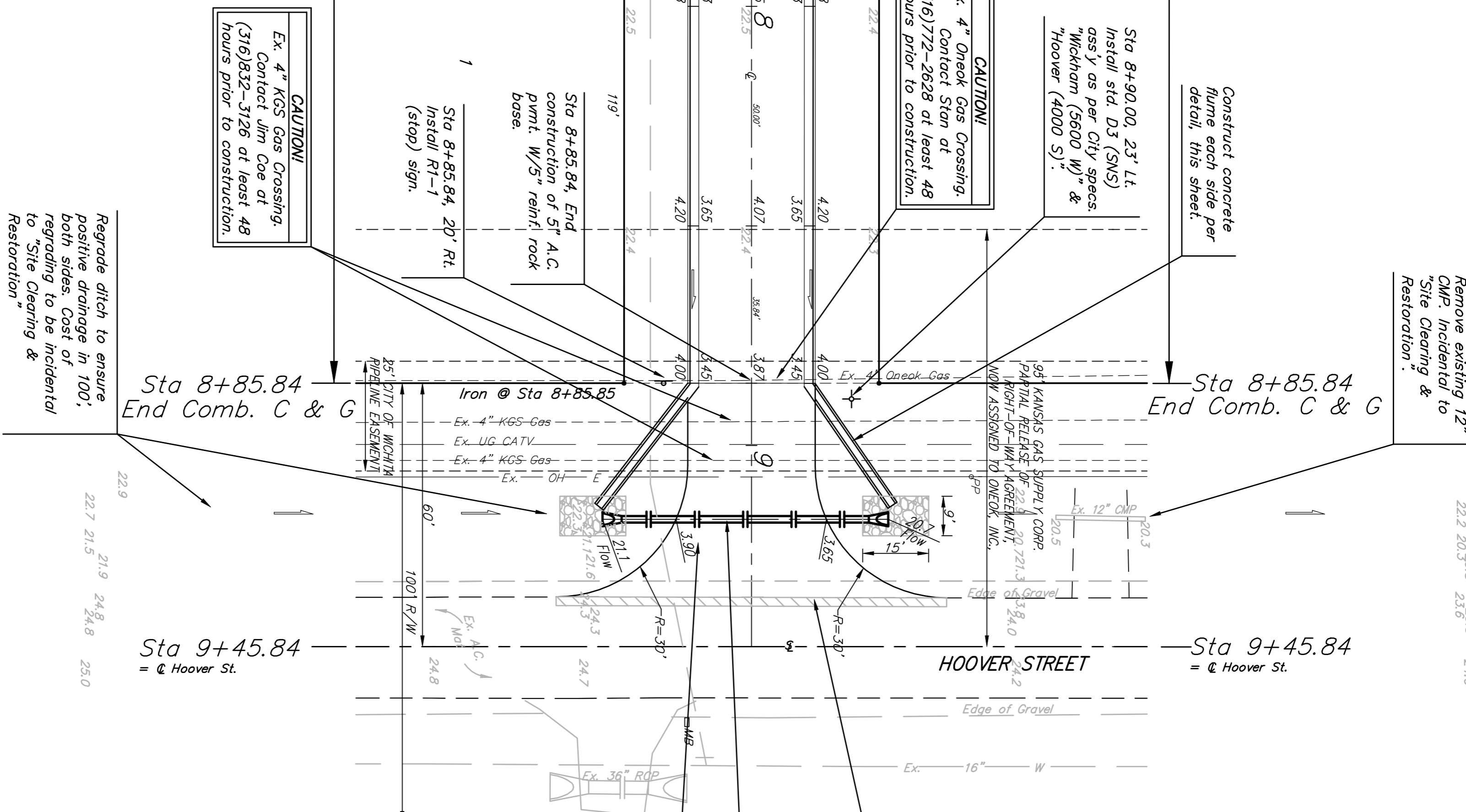
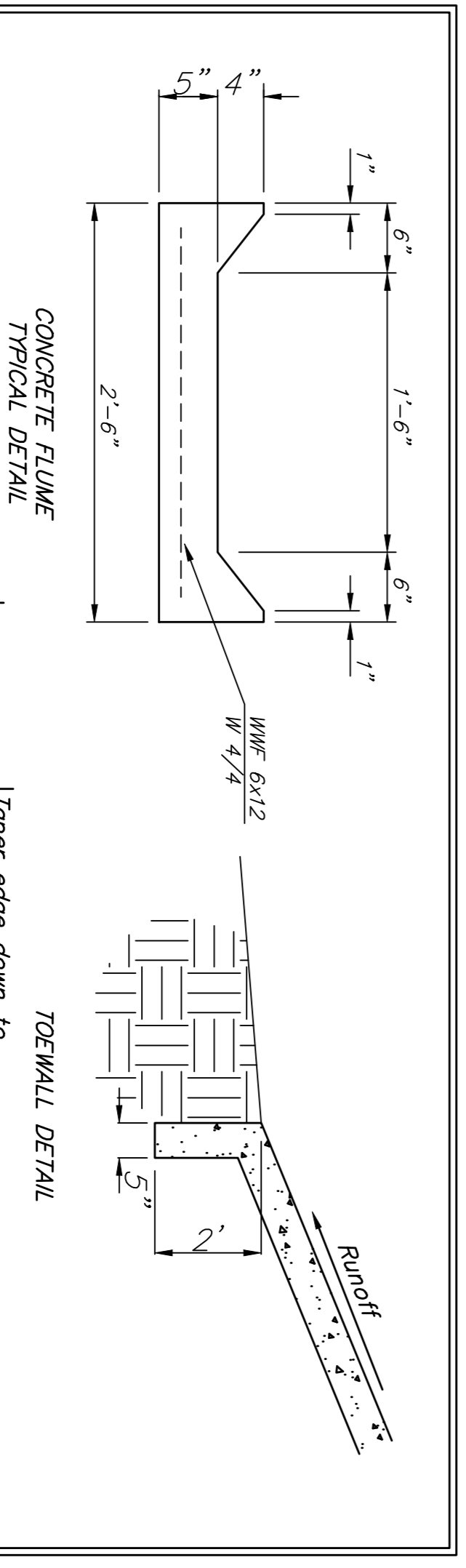
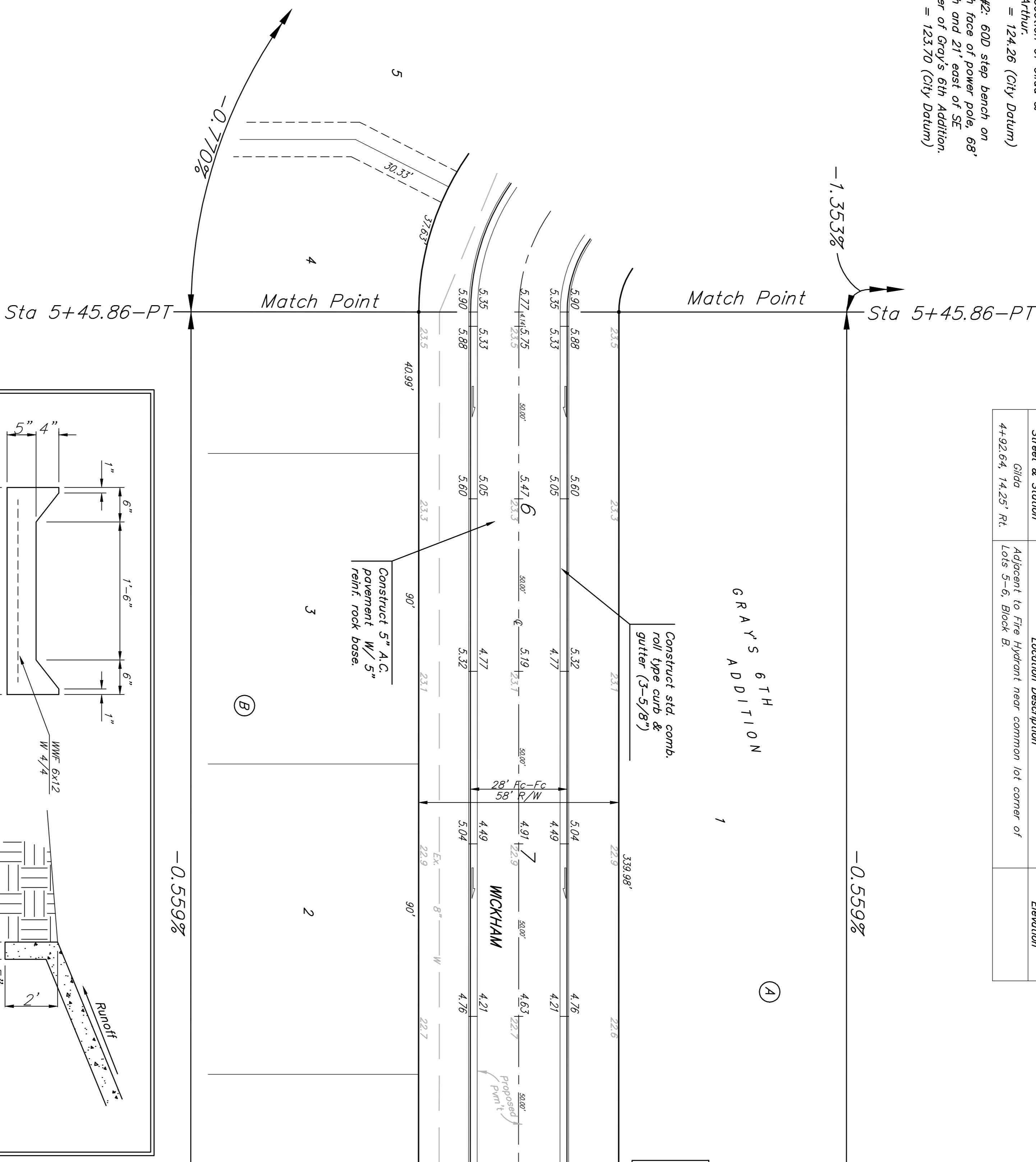


BENCHMARK:
 BM #1: "D" in top of curb at north end of median at intersection of Gilda & MacArthur.
 Elev. = 124.26 (City Datum)

BM #2: 600' step bench on north face of power pole, 68' north and 21' east of SE corner of Gray's 6th Addition.
 Elev. = 123.70 (City Datum)

P.V.I.
 Elev. = 125.90
 No V.C.

Street & Station	Subdivision Description	Elevation
Gilda 4+92.64, 14.25' Rt.	Adjacent to Fire Hydrant near common lot corner of Lots 5-6, Block B.	



WATER VALVE LOCATION TABLE

VALVE NUMBER	STREET	BASELINE STATION	OFFSET DISTANCE	OFFSET DIRECTION
V1	Gilda	4+92.64	14.25'	RL

Paving contractor will be responsible to operate all water valves on the project, in the presence of the inspector, to ensure accessibility to the valves, and that all valves are left in the "ON" position when the project is completed.

NOTE:
 ROLL TYPE CURB & GUTTER TO BE CONSTRUCTED ON THE PAVEMENT SHOWN ON THIS SHEET. TOP OF CURB ELEVATIONS ARE GIVEN FOR FULL HEIGHT CURB.

GRAY'S 6TH ADDITION
WICKHAM
 STA 5+45.86 TO STA 9+45.84

Baughman
 ENGINEERING & SURVEYING I PLANNING I LANDSCAPE ARCHITECTURE
 47248165

DESIGN ATD
APPROVED
 DATE 09/07

SCALE
 5 OF 13

07-25-2017



Scale: 1" = 20'
 • = Iron