

# GRAY'S 6TH ADDITION WICHITA, SEDGWICK COUNTY, KANSAS

State of Kansas) SS We, Baughman Company, P.A., Surveyors in Sedgewick County and state do hereby certify that we have surveyed and platted "GRAY'S 6TH ADDITION", Wichita, Sedgewick County, Kansas and that the accompanying plat is a true and correct exhibit of the property surveyed, described as and being a replat of Lot 1, Block A, Wheatland Commercial Addition, Wichita, Sedgewick County, Kansas, EXCEPT the east 10 feet of the south 47.77 feet thereof dedicated for street.

All being situated in the NE 1/4 of Sec. 15, Twp. 28-S, R-1-W of the 6th P.M., Sedgewick County, Kansas. Existing public easements and dedications being vacated by virtue of K.S.A. 12-512(b).

Baughman Company, P.A.

This plat of "GRAY'S 6TH ADDITION", Wichita Sedgewick County, Kansas has been submitted to and approved by the Wichita-Sedgewick County Metropolitan Area Planning Commission, Wichita, Kansas.

Dated this \_\_\_\_\_ day of \_\_\_\_\_, 2007.  
Wichita-Sedgewick County Metropolitan Area Planning Commission

\_\_\_\_\_, Chair  
Darrell A. Downing  
\_\_\_\_\_, Secretary  
John L. Schlegel

This plat approved and all dedications shown hereon accepted by the City Council of the City of Wichita, Kansas, this \_\_\_\_\_ day of \_\_\_\_\_, 2007.

\_\_\_\_\_, Mayor  
Carl Brewer  
\_\_\_\_\_, City Clerk  
Karen Sublett

Reviewed in accordance with K.S.A. 58-2005 on this \_\_\_\_\_ day of \_\_\_\_\_, 2007.

\_\_\_\_\_  
Tricia L. Robella, L.S. #1246  
Deputy County Surveyor  
Sedgewick County, Kansas

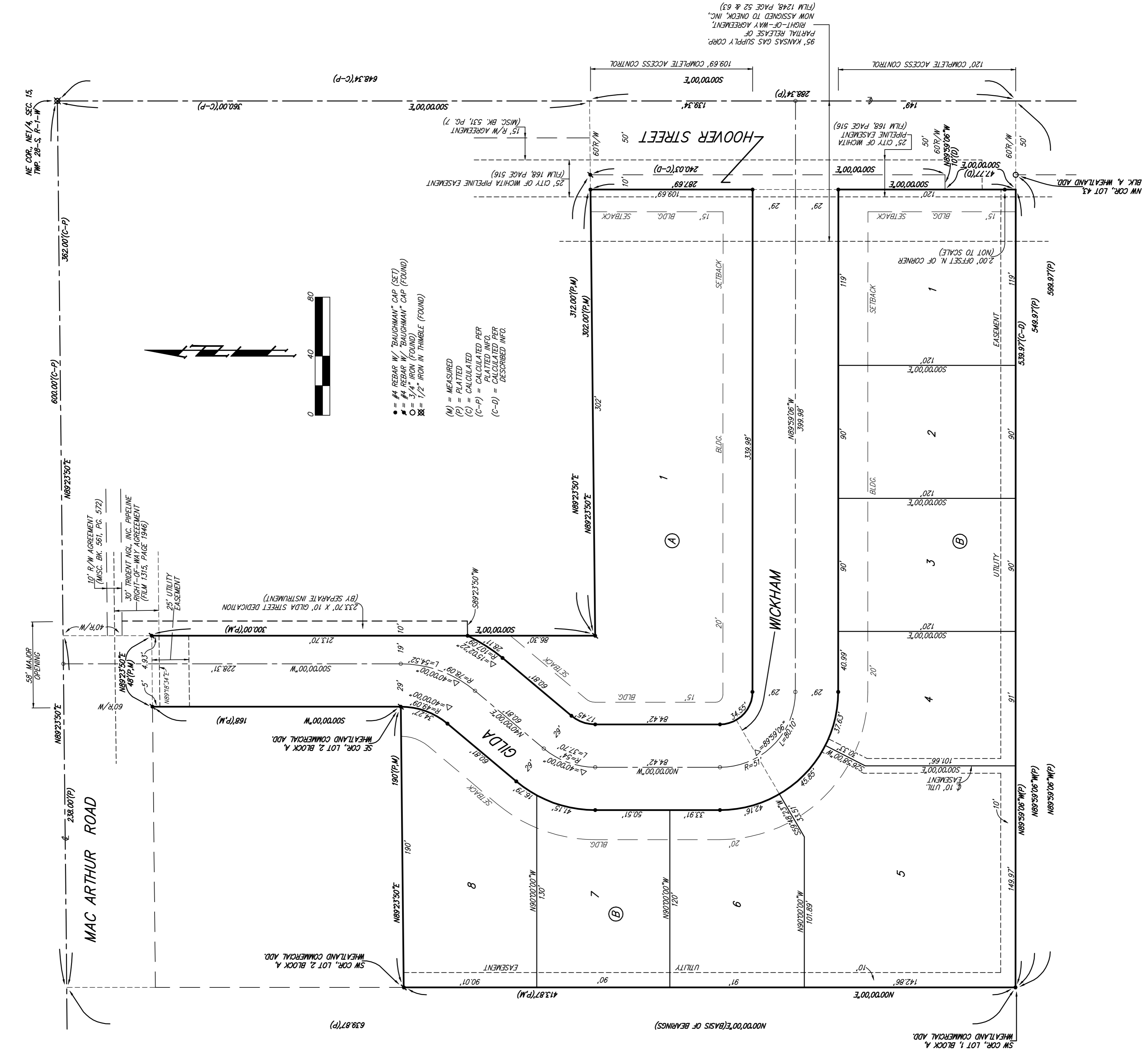
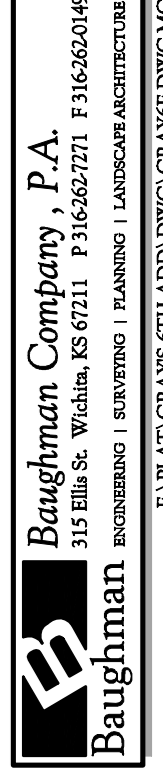
Entered on transfer record this \_\_\_\_\_ day of \_\_\_\_\_, 2007.

\_\_\_\_\_, County Clerk  
Don Brace

SS This is to certify that this plat has been filed for record in the office of the Register of Deeds, this \_\_\_\_\_ day of \_\_\_\_\_, 2007 at \_\_\_\_\_ o'clock \_\_\_\_\_ M., and is duly recorded.

\_\_\_\_\_, Register of Deeds  
Bill Meek  
\_\_\_\_\_, Deputy  
Tonya Buckingham

## GRAY'S 6TH ADDITION



Know all men by these presents that we, the undersigned, have caused the land in the surveyors certificate to be platted into Lots, Blocks, and Streets, to be known as "GRAY'S 6TH ADDITION", Wichita, Sedgewick County, Kansas. The utility easements are hereby granted as indicated for the construction and maintenance of all public utilities. The streets are hereby dedicated to and for the use of the public. Access controls shall be as depicted on the face of the plat and are hereby granted to the City of Wichita, Kansas.

Gray Development, Inc., a Kansas corporation

\_\_\_\_\_, President  
Billy J. Gray

State of Kansas) SS The foregoing instrument acknowledged before me, this \_\_\_\_\_ day of \_\_\_\_\_, 2007, by Billy J. Gray, President of Gray Development, Inc., a Kansas corporation, on behalf of the corporation.

\_\_\_\_\_, Notary Public  
My App't. Exp. \_\_\_\_\_

NOTE: A DRAINAGE PLAN HAS BEEN DEVELOPED FOR THIS SUBDIVISION AND IS ON FILE WITH THE CITY OF WICHITA, KANSAS. DRAINAGE INTENT SHALL REMAIN AS DEPICTED OR AS MODIFIED WITH THE APPROVAL OF THE CITY ENGINEER. THE DRAINAGE PLAN IS PART OF THIS PLAT AND SHALL BE FILED WITH THIS PLAT. THE FLOW OF THIS DRAINAGE PLAN SHALL BE ALLOWED.