

STORM WATER DRAIN #331

to serve

STONEBRIDGE 2ND ADDITION

CITY OF WICHITA, KANSAS

James L. Armour, P.E. City Engineer

Project Number

468-84395

O.C.A. Number

751454

GENERAL NOTES:

1. Contractor will be required to provide notice to utility companies a minimum of forty-eight (48) hours prior to any excavation, as follows:

Kansas One-Call 687-2470

The Contractor must notify the following in case of an emergency:

- Cox Communications 262-4270
- Kansas Gas Service 1-888-482-4950
- Westar Energy 383-8650
- Aquila Energy 1-800-303-0357
- A&T 268-2245
- City of Wichita Water Dept. 268-4563
- City of Wichita Sewer Maint. 268-4024
- City of Wichita Storm Sewer Maint. 268-4090
- City of Wichita Traffic Maint. 268-4034
- Conoco Phillips Pipeline Co. 1-877-267-2290
- Southern Star Pipeline Co. 529-6600
- Kinder-Morgan Pipeline Co. 1-888-844-5658

2. Utility service lines, poles, valve boxes, meters, and etcetera are to be adjusted as necessary by others prior to construction unless the plans specifically call for their adjustment by the Contractor or unless the plans specifically identify a utility to be adjusted by its owner during construction. Existing utilities and their location, as shown on the plans, represent the best information obtainable for design. The Contractor will be required to work around existing utilities within the right-of-way which do not conflict with proposed construction.

3. Rubble from the removal of miscellaneous structures and excess excavation which is to be wasted shall be disposed of on sites to be provided by the Contractor. These sites shall be approved by the Engineer as to suitability, appearance and site location. Locations, in the opinion of the Engineer, that will leave an unsightly appearance will not be approved. All disposal sites must be approved by the Kansas Department of Health and Environment. Material either stockpiled or disposed of in a flood plain would require a Kansas State Board of Agriculture permit. Any material dumped in waters of the United States or wetlands is subject to U.S. Corps of Engineers permitting regulations. Any material buried or stockpiled beyond approved construction limits would require additional archaeological investigations unless buried in a previously approved borrow location.

4. Trees and shrubs in public right-of-way which are in direct conflict with proposed new construction shall be removed by the Contractor with the Engineer's approval. Trees and shrubs which are not in direct conflict with proposed new construction shall be saved and protected from damage.

5. The Contractor shall give all property owners and/or tenants of developed property abutting the construction of this project a minimum of ten (10) days notice prior to start of construction.

6. The Contractor shall be responsible for preserving property irons. The Contractor will be required to re-establish any property irons which are damaged or destroyed by his construction operations. Such irons shall be re-established by a licensed land surveyor in accordance with state laws.

7. All existing and proposed erosion control measures including silt fencing, erosion control mat, straw bales, inlet barriers, and const. entrance shall be maintained throughout construction by the contractor and until project is accepted by the City of Wichita. The on-site engineer shall complete weekly reports on the status of erosion control measures. The contractor shall be required to comply with maintenance and/or replacement of erosion control measures as determined by the on-site engineer until project is accepted by City of Wichita. Maintenance and/or replacement of erosion control measures to be paid as bid items list.

Benchmarks

BM #1: "□" CUT, TOP OF CURB, S. SIDE OF SUNDANCE AS DEDICATED IN SAVANNA AT CASTLE ROCK RANCH 7TH ADDITION, 25± W. OF THE WEST LINE OF THE SE1/4 OF SEC. 12, TWP. 27-S, R-2-E. ELEV. = 1347.33 NGVD29

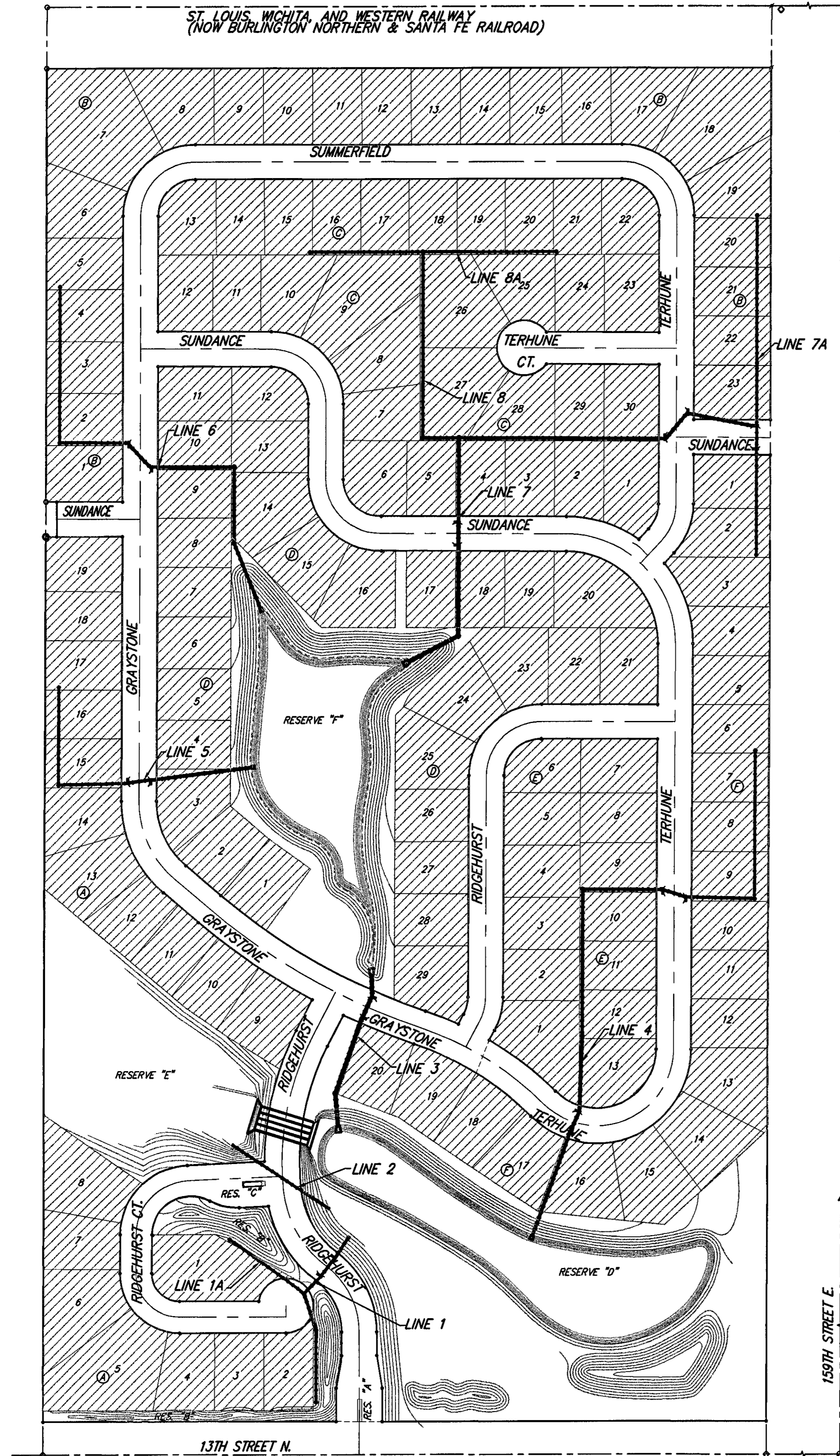
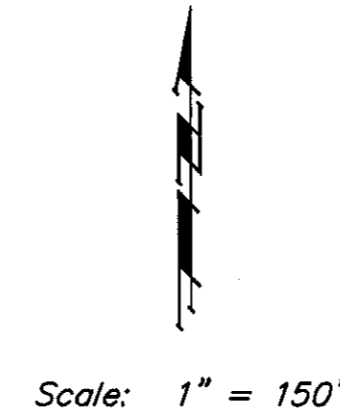
BM #2: 60d NAIL IN HIGH LINE POLE, 30' SOUTH OF S1/4 COR., SEC. 12, TWP. 27-S, R-2-E. ELEV. = 1348.58 NGVD29 (PER COUNTY RECORD)

8. All excess excavation shall remain on-site and shall be stockpiled or spread at a location determined by the engineer.

9. At conclusion of construction, an as-built survey will be completed by the engineer. The contractor will be required to finish and smooth grade all locations as necessary that are not within ±0.2' of street r/w plan grade or within ±0.3' of plan grade outside of street r/w. The contractor shall include all costs associated with the regrading and/or remobilization in the bid item "Mass Grading."

10. All areas disturbed during construction shall be seeded as noted on pond plan. Contractor shall prepare ground per City Specifications. All costs shall be included in bid item "Project Seeding".

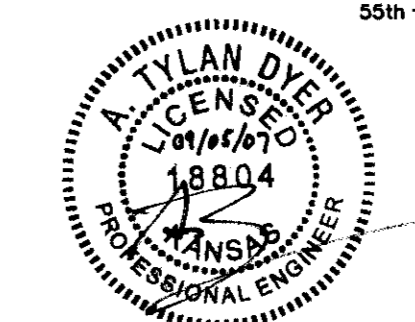
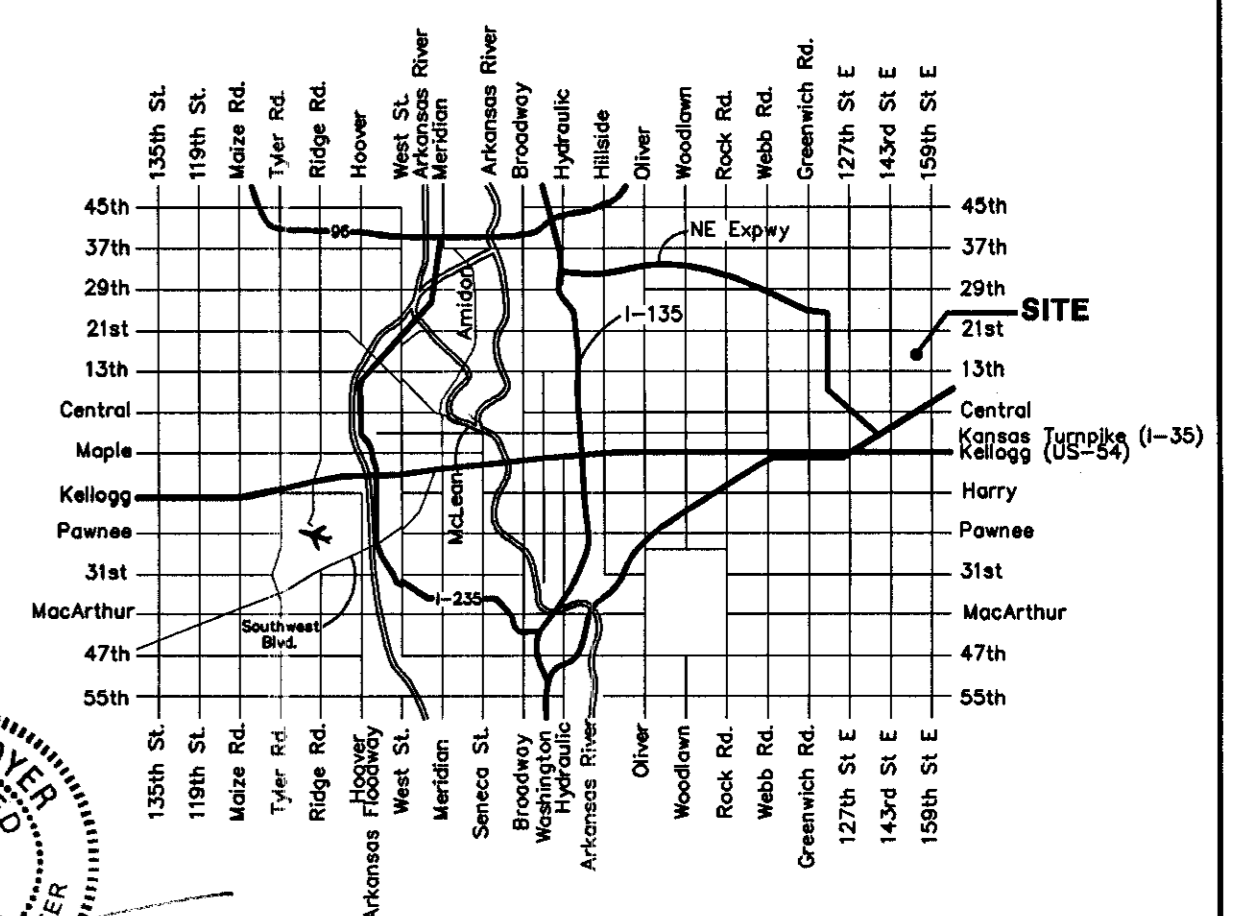
11. The developer for this project is FLKS Land Development (316) 641-3268.



Benefit District

Sheet Index

Title Sheet	1
Line 1	2
Lines 1A	3
Line 2	4
Line 3	5
Line 4	6-9
Line 5	10-11
Line 6	12-14
Line 7	15-17
Line 7A	18
Line 8	19-20
Line 8A	21
RCBC 4*(10'X5')	22
RCBC Details	23-26
Headwall Details	27-28
Standard Manhole Detail	29
Std. Shallow M.H. Detail	30
Ring & Cover Detail	31
Special Yard Inlet	32
Drop Inlet Detail	33
Std. Type 1A-S Inlet	34
Std. Type 1A-D Inlet	35
Mass Grading	36-38
Mass Grading Section	39
Pond Plan "E"	40
Pond Plan "D"	41
Pond Cross Sections	42-45
Erosion Control BMP Details	46-49
Coordinate Sheet	50
Copy of Plat	51



Vicinity Map

Final Plans
09/05/07 ATD



Baughman Company, P.A. 315 Ella St. Wichita, KS 67211 P 316-262-7271 F 316-262-0149
ENGINEERING | SURVEYING | PLANNING | LANDSCAPE ARCHITECTURE