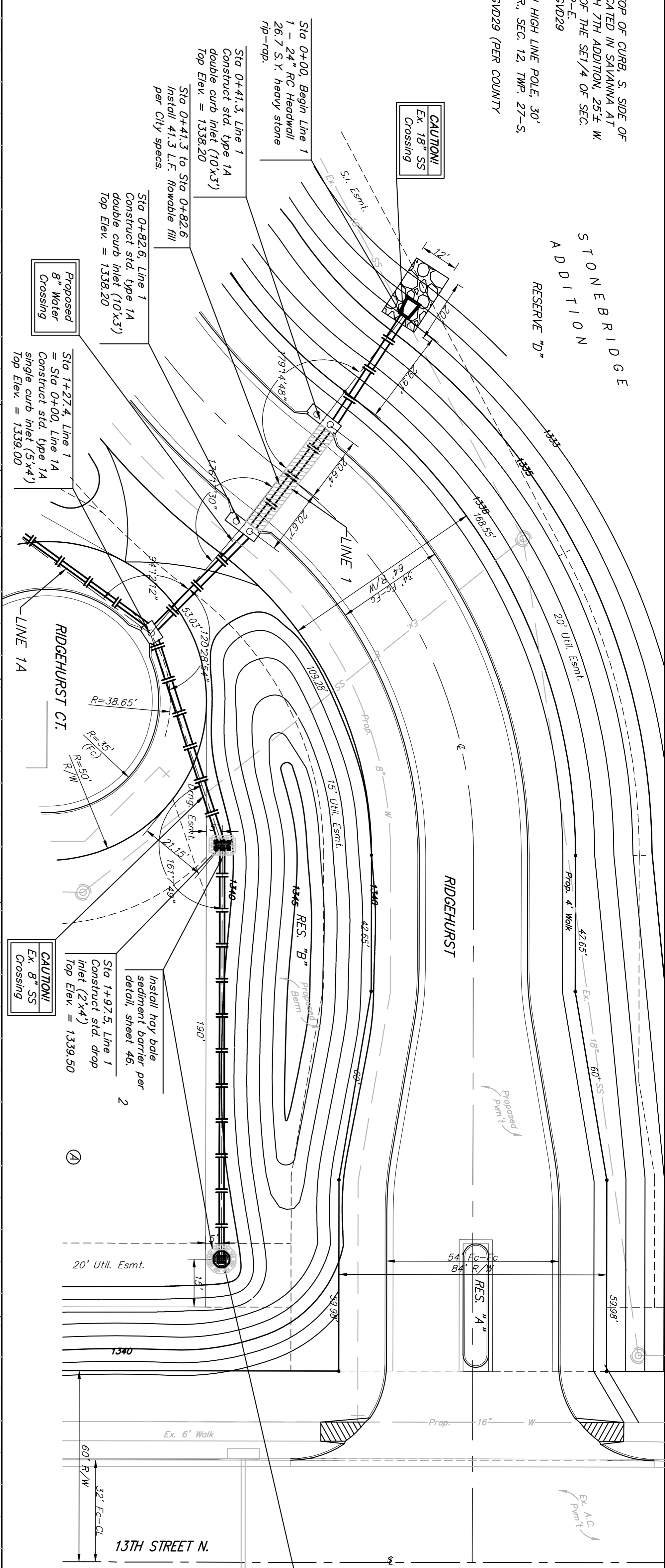


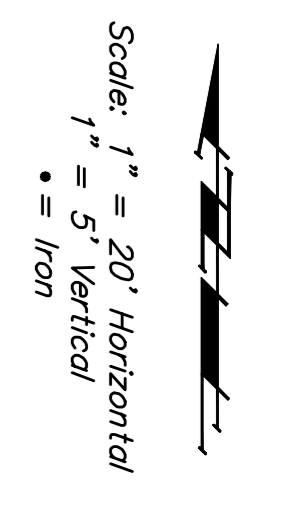
BENCHMARK:  
 BM #1: "C" CUT, TOP OF CURB, S. SIDE OF  
 SUNDANCE AS DEDICATED IN SAVANNAH AT  
 CASTLE ROCK RANCH 7TH ADDITION, 25' E. W.  
 OF THE WEST LINE OF THE S1/4 OF SEC.  
 12, TWP. 27-S, R-2-E.  
 ELEV. = 1347.33 NGVD29

BM #2: 60' NAIL IN HIGH LINE POLE, 30'  
 SOUTH OF S1/4 COR., SEC. 12, TWP. 27-S,  
 R-2-E.  
 ELEV. = 1348.58 NGVD29 (PER COUNTY  
 RECORD)

STONEBRIDGE  
 ADDITION  
 RESERVE "D"



|      |   |                              |   |
|------|---|------------------------------|---|
| 1340 | 1332.00 = Flow  | 41.3 L.F. 24" RCP @ +1.0908% | Sta 0+00, Begin Line 1<br>1 - 24" RC Headwall<br>26.7 S.Y. heavy stone<br>rip-rap.                                      |
| 1335 | 1332.45 = Flow Out (NE)<br>1332.55 = Flow In (SW)                           | 41.3 L.F. 24" RCP @ +0.242%  | Sta 0+41.3, Line 1<br>Construct std. type 1A<br>double curb inlet (10'x3')<br>Top Elev. = 1338.20                       |
| 1330 | 1332.65 = Flow Out (NE)<br>1332.75 = Flow In (SW)                           | 44.8 L.F. 24" RCP @ +0.223%  | Sta 0+82.6, Line 1<br>Construct std. type 1A<br>double curb inlet (10'x3')<br>Top Elev. = 1338.20                       |
| 1325 | 1332.79 = Flow  | 70.1 L.F. 24" RCP @ +0.214%  | Sta 1+27.4, Line 1<br>= Sta 0+00, Line 1A<br>Construct std. type 1A<br>single curb inlet (5'x4')<br>Top Elev. = 1339.00 |
|      | 1332.85 = Flow Out (NE)<br>1332.95 = Flow In (SE)<br>1333.60 = Flow In (NW) | 129.9 L.F. 18" RCP @ +0.308% | Sta 1+97.5, Line 1<br>Construct std. drop<br>inlet (2'x4')<br>Top Elev. = 1339.50                                       |
|      | 1333.00 = Flow  |                              | Sta 3+27.4, End Line 1<br>Construct special yard<br>inlet.<br>Top Elev. = 1337.50                                       |
|      | 1333.10 = Flow Out (NW)<br>1333.60 = Flow In (S)                            |                              |   |
|      | 1333.76 = Flow  |                              |   |
|      | 1333.92 = Flow  |                              |   |
|      | 1334.00 = Flow  |                              |   |



**Baughman**  
 STORM WATER SEWER IMPROVEMENTS  
 LINE 1

PROJECT NUMBER: 46844395  
 DATE: 09/07  
 SHEET: 2 OF 51

DESIGN: TMS  
 APPROVED: DATE: 09/07

Scale: 1" = 20' Horizontal  
 1" = 5' Vertical  
 ● = Iron

06-07-ES98