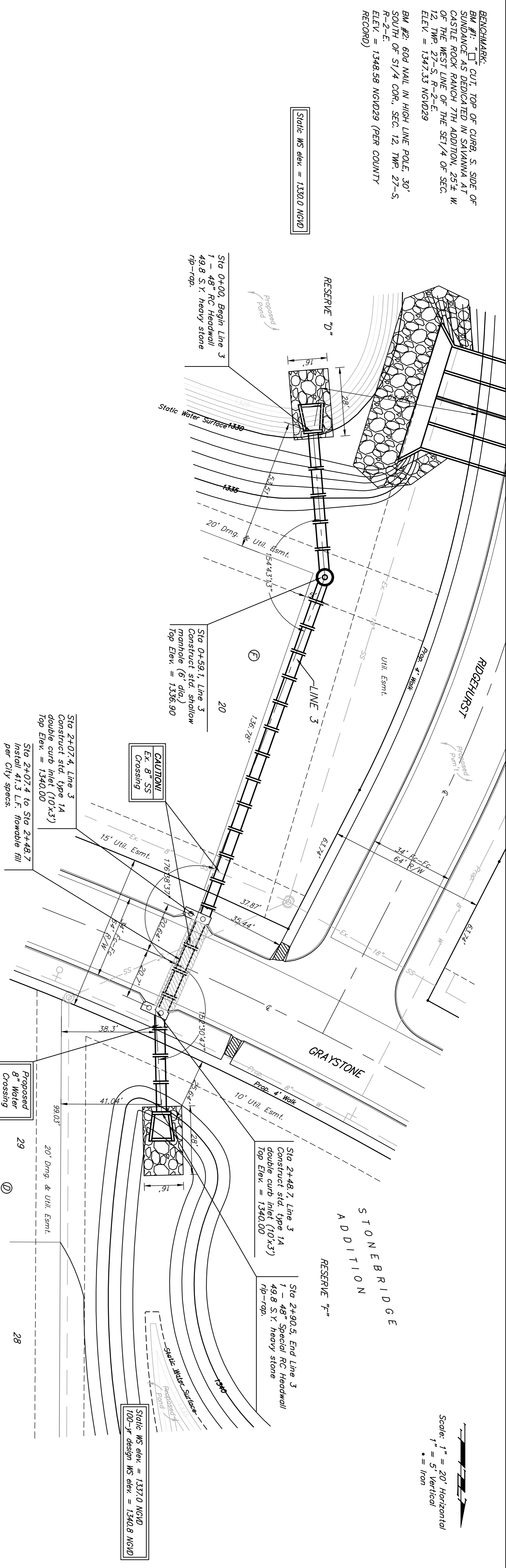
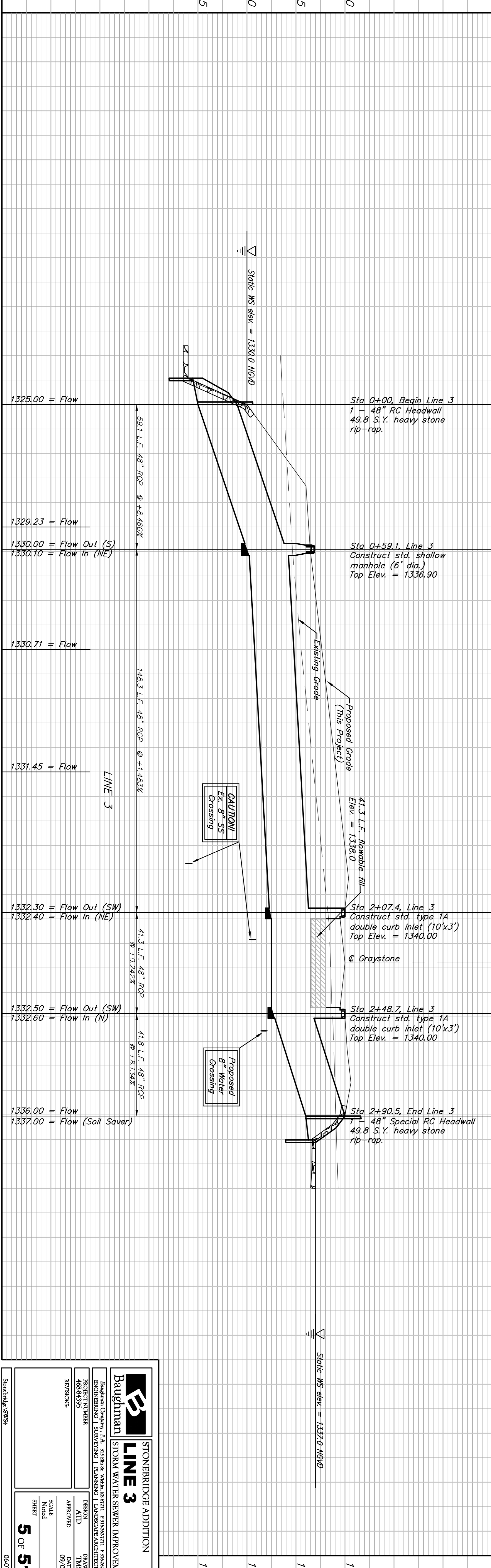


BENCHMARK:  
 BM #1: "C" CUT, TOP OF CURB, S. SIDE OF  
 SUNDANCE AS DEDICATED IN SAVANNA AT  
 CASTLE ROCK RANCH 7TH ADDITION, 25' E  
 OF THE WEST LINE OF THE SE1/4 OF SEC.  
 12, TWP. 27-S, R-2-E  
 ELEV. = 1347.33 NGVD29

BM #2: 604 NAIL IN HIGH LINE POLE, 30'  
 SOUTH OF ST/4 COR., SEC. 12, TWP. 27-S,  
 R-2-E  
 ELEV. = 1348.58 NGVD29 (PER COUNTY  
 RECORD)



Scale: 1" = 20' Horizontal  
 1" = 5' Vertical  
 • = Iron



<b>STONEBRIDGE ADDITION</b> <b>LINE 3</b> STORM WATER SEWER IMPROVEMENTS	
PROJECT NUMBER 46844395	DESIGN ATD
REVISIONS	DATE 09/07
SCALE None	SHEET <b>5 OF 51</b>
06-07-2008	