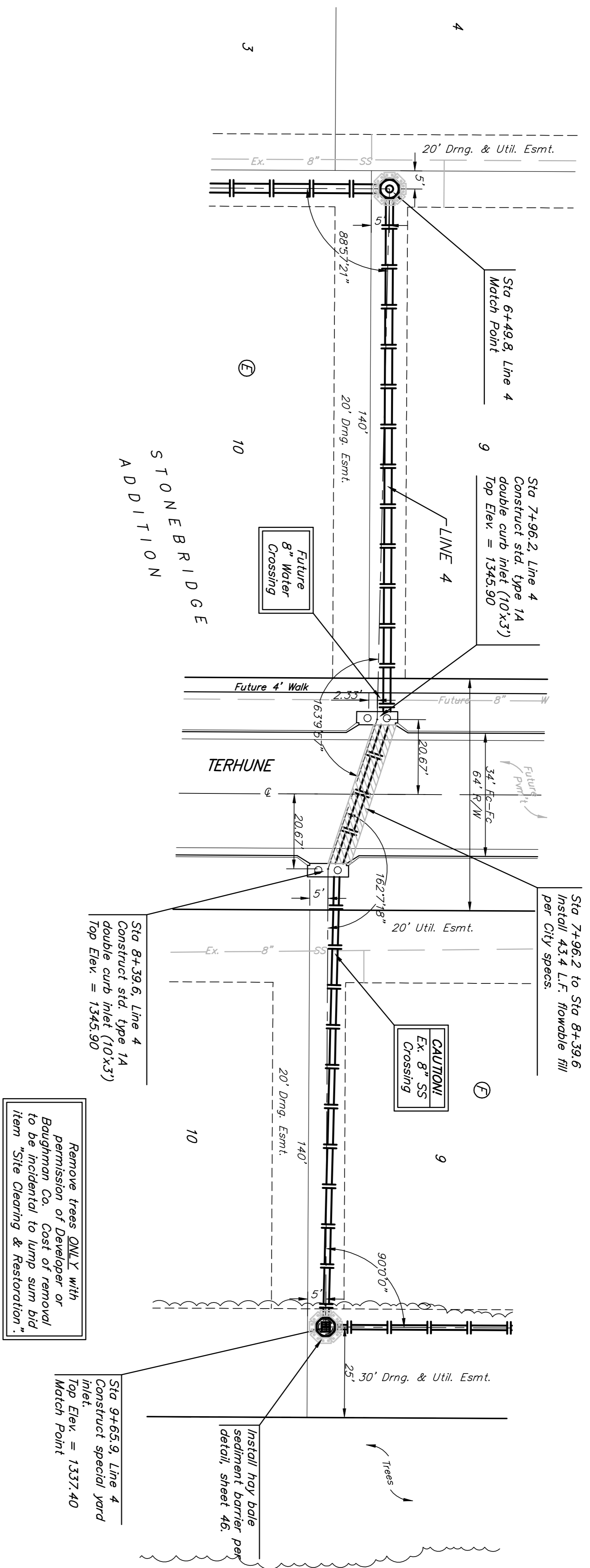


BENCHMARK:  
 BM #1: "C" CUT, TOP OF CURB, S. SIDE OF  
 SUNDANCE AS DEDICATED IN SAVANNA AT  
 CASTLE ROCK RANCH 7TH ADDITION, 25'± W  
 OF THE WEST LINE OF THE SE1/4 OF SEC.  
 12, TWP. 27-S, R-2-E  
 ELEV. = 1347.33 NGVD29

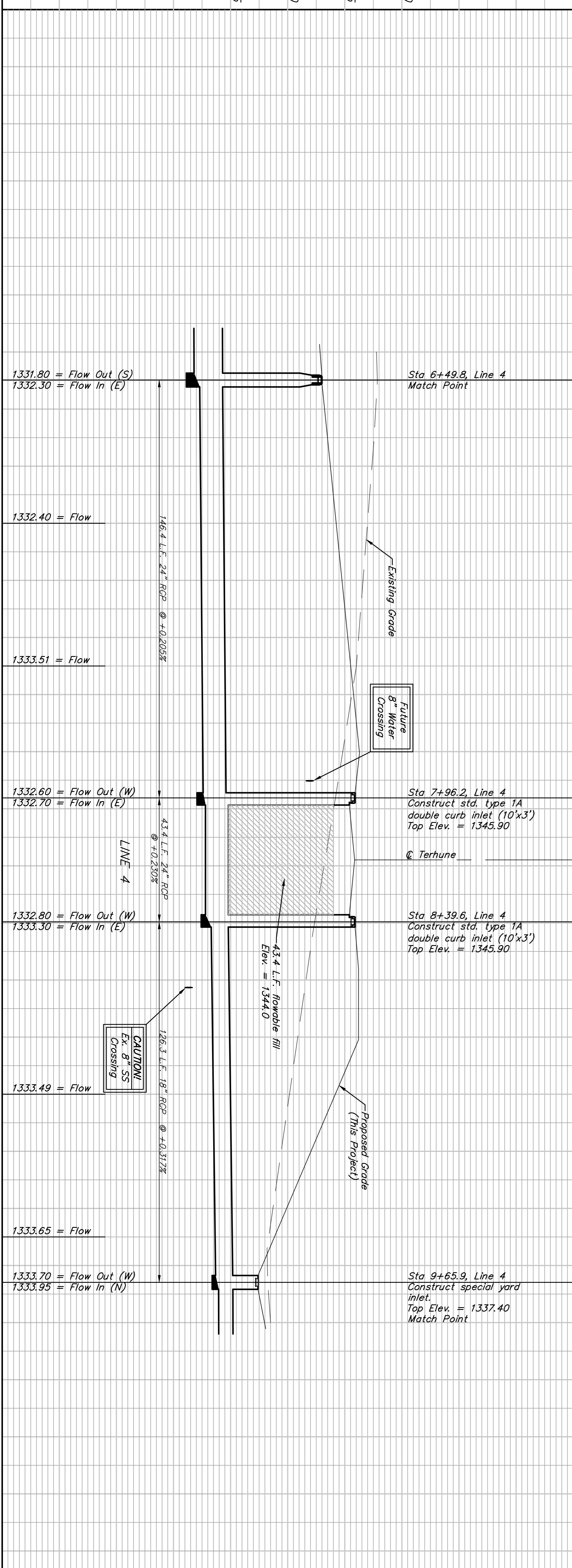
BM #2: 604 NAIL IN HIGH LINE POLE, 30'  
 SOUTH OF ST/4 COR., SEC. 12, TWP. 27-S,  
 R-2-E  
 ELEV. = 1348.58 NGVD29 (PER COUNTY  
 RECORD)



Scale: 1" = 20' Horizontal  
 1" = 5' Vertical  
 • = Iron

Remove trees ONLY with permission of Developer or Baughman Co. Cost of removal to be incidental to lump sum bid item "Site Clearing & Restoration".

Trees shall be protected from damage during storm sewer construction.



<b>Baughman</b> Storm Water Sewer Improvements		<b>STONEBRIDGE ADDITION</b> <b>LINE 4</b>	
PROJECT NUMBER 46844395	DESIGN ATD	DRAWN TMS	DATE 09/07
REVISIONS	APPROVED None	SCALE None	SHEET <b>8 OF 51</b>
Baughman Company, P.A. 315 Main St., Suite 201, P.O. Box 22721, Raleigh, NC 27626-0271 ENGINEERING   SURVEYING   PLANNING   LANDSCAPE ARCHITECTURE		1350 1345 1340 1335	