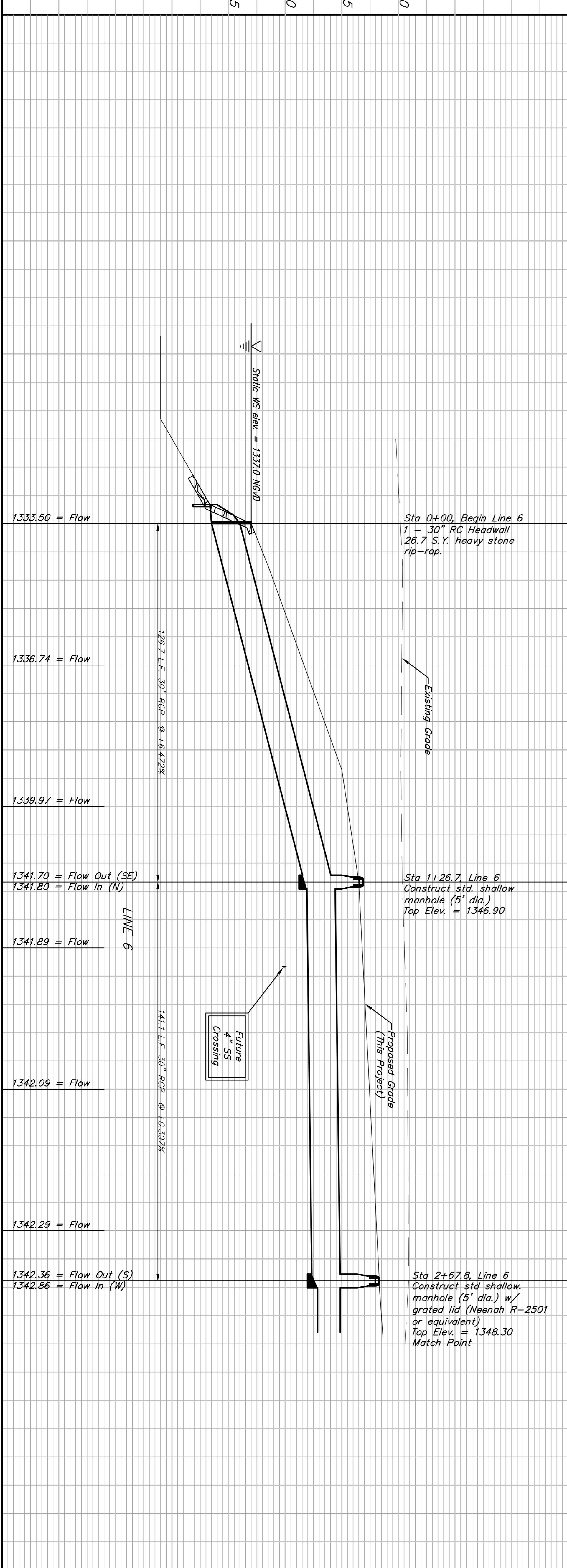
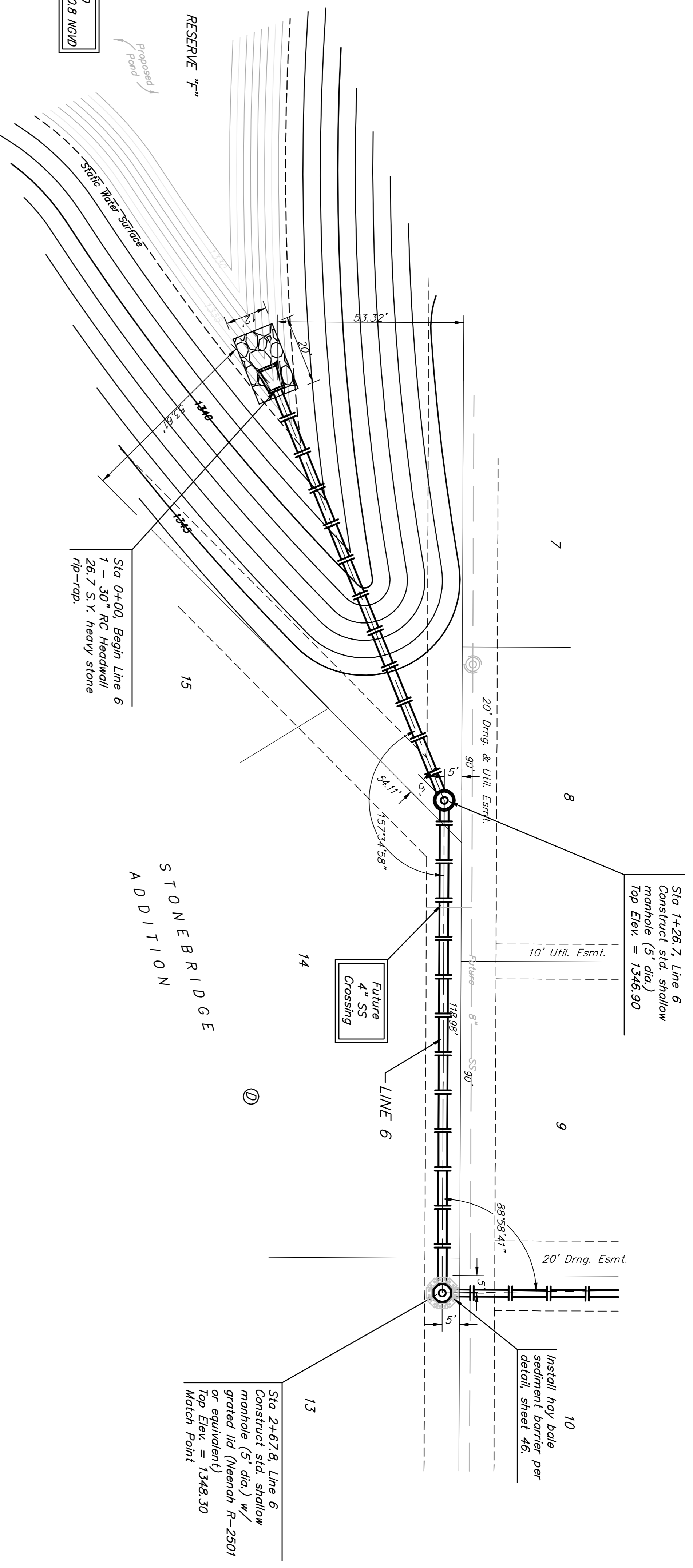


BENCHMARK:  
 BM #1: "CUT, TOP OF CURB, S. SIDE OF  
 SUNDANCE AS DEDICATED IN SAVANNA AT  
 CASTLE ROCK RANCH 7TH ADDITION, 25' E. W.  
 OF THE WEST LINE OF THE SET/4 OF SEC.  
 12, TWP. 27-S, R-2-E  
 ELEV. = 1347.33 NGVD29

BM #2: 60d NAIL IN HIGH LINE POLE, 30'  
 SOUTH OF ST/4 COR., SEC. 12, TWP. 27-S,  
 R-2-E.  
 ELEV. = 1348.58 NGVD29 (PER COUNTY  
 RECORD)



**Baughman**  
 ENGINEERING | SURVEYING | PLANNING | LANDSCAPE ARCHITECTURE

**STONEBRIDGE ADDITION**  
**LINE 6**  
 STORM WATER SEWER IMPROVEMENTS

PROJECT NUMBER: 46844395  
 DESIGN: TMS  
 DATE: 09/07  
 SCALE: None  
 SHEET: 12 OF 51

06-07-2008

Scale: 1" = 20' Horizontal  
 1" = 5' Vertical  
 ● = Iron