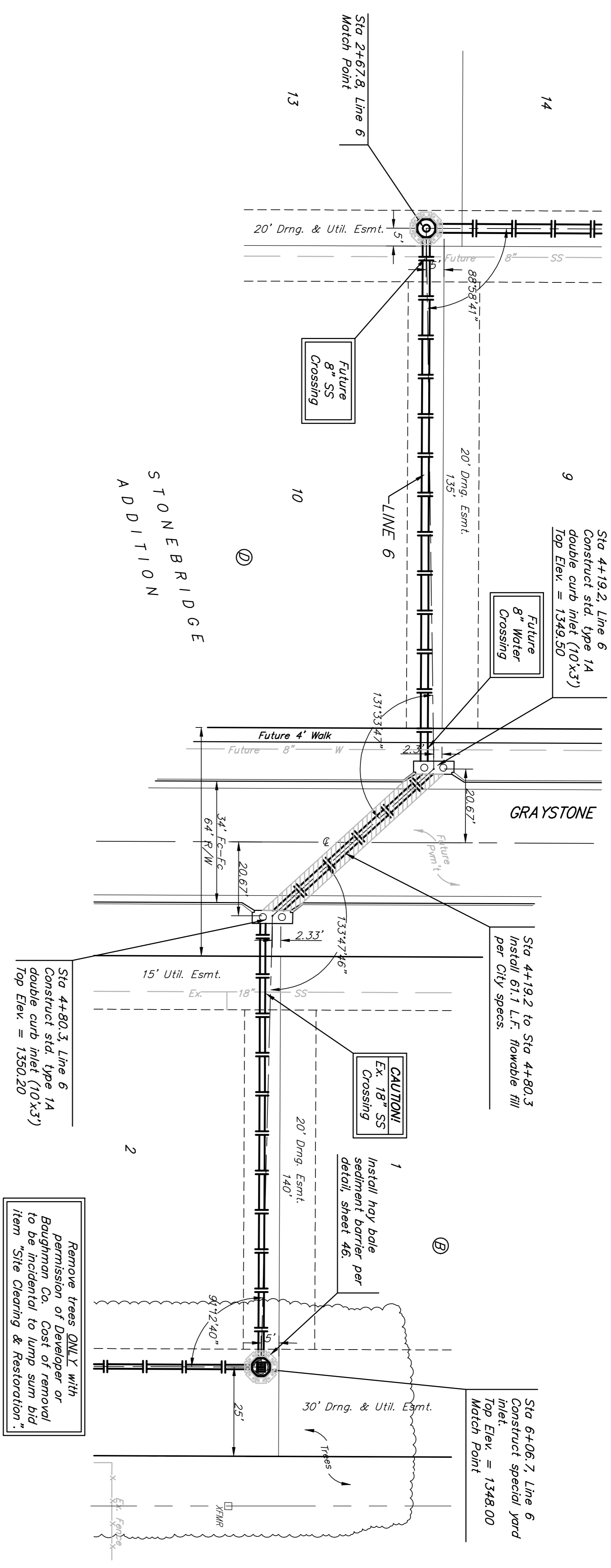


BENCHMARK:
 BM #1: "CUT, TOP OF CURB, S. SIDE OF
 SUNDANCE AS DEDICATED IN SAVANNA AT
 CASTLE ROCK RANCH 7TH ADDITION, 25± W
 OF THE WEST LINE OF THE SE1/4 OF SEC.
 12, TWP. 27-S, R-2-E
 ELEV. = 1347.33 NGVD29

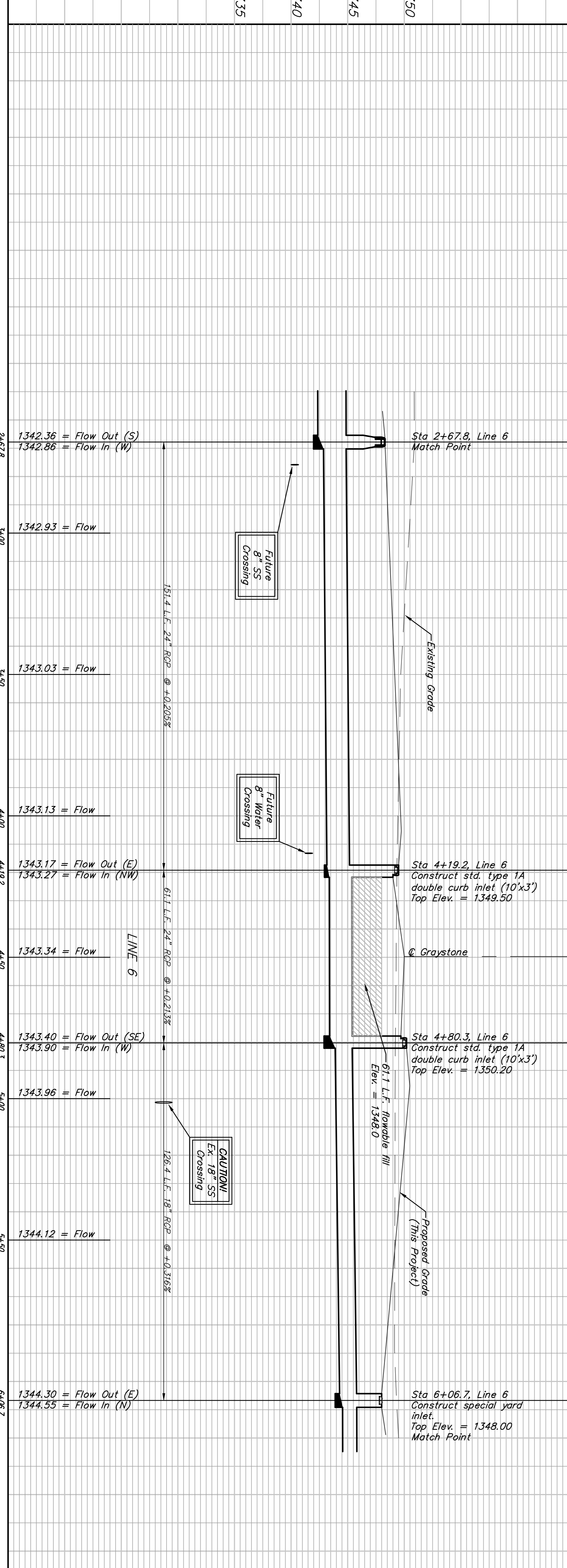
BM #2: 604 NAIL IN HIGH LINE POLE, 30'
 SOUTH OF ST/4 COR., SEC. 12, TWP. 27-S,
 R-2-E.
 ELEV. = 1348.58 NGVD29 (PER COUNTY
 RECORD)



Scale: 1" = 20' Horizontal
 1" = 5' Vertical
 • = Iron

Remove trees ONLY with permission of Developer or Baughman Co. Cost of removal to be incidental to lump sum bid item "Site Clearing & Restoration".

Trees shall be protected from damage during storm sewer construction.



Baughman
LINE 6
 STORM WATER SEWER IMPROVEMENTS

13 OF 51

06-07-ES98

Scale: 1" = 20' Horizontal
 1" = 5' Vertical
 • = Iron