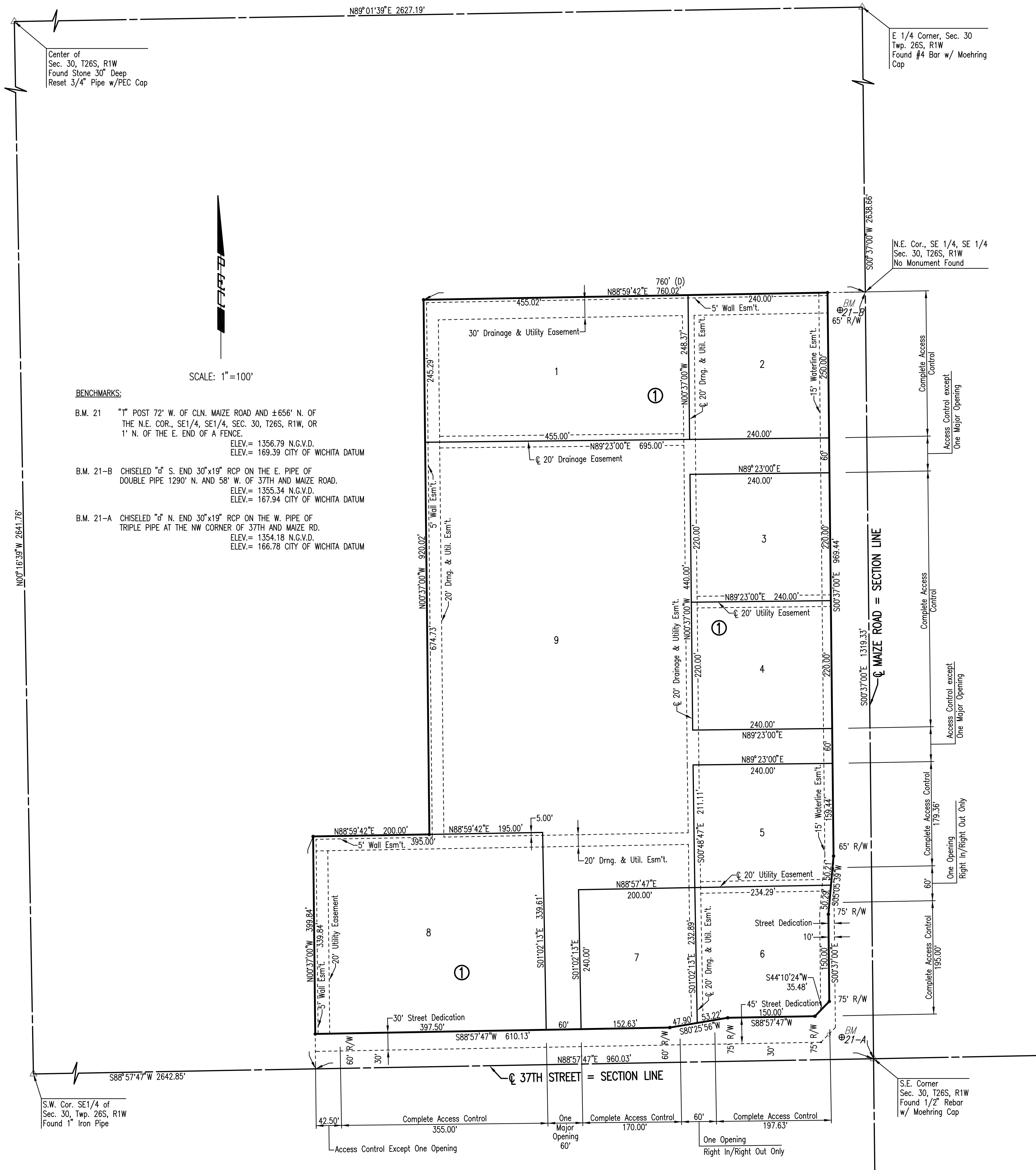
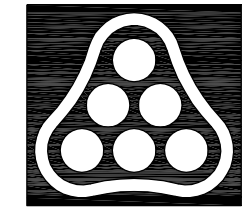


HAMPTON SQUARE

AN ADDITION TO WICHITA, SEDGWICK COUNTY, KANSAS



Saved: 09-24-2007 10:22:59 AM by AME
 Plot Scale: 1"=100' 09-24-2007 11:35:25 AM by AME
 C:\2007\07227\001\07227-001-Plat



No.	Revision	By	Date
HAMPTON SQUARE WATERLINE IMPROVEMENTS PLAT JAMES L. ARMOUR, P.E. - CITY ENGINEER CITY OF WICHITA PROJECT NO. 448-89964 Professional Engineering Consultants, P.A. 303 S. TOPEKA • WICHITA, KANSAS 67202 316-262-2691 • FAX 316-262-3003			
Designed by	MDK	Job No.	35-07227-001
Drawn by		Date	May 2007