

**GENERAL NOTES**

ALL STORM WATER SEWER SHALL CONFORM TO THE REQUIREMENTS SET FORTH IN THE CITY OF WICHITA STANDARD SPECIFICATIONS FOR STORM SEWERS AND DRAINAGE, FORM 245-234, DATED APRIL 1987, EXCEPT THAT SEPARATE MEASUREMENT AND PAYMENT SHALL NOT BE MADE.

CONTRACTOR SHALL PROVIDE A MINIMUM FORTY-EIGHT (48) HOUR ADVANCE NOTICE (EXCLUDING WEEKENDS AND HOLIDAYS) PRIOR TO BEGINNING ANY EXCAVATION, TO KANSAS ONE-CALL SYSTEM, A UTILITY LOCATION SERVICE, AT (316) 987-2470 TO REQUEST THE FOLLOWING UTILITY COMPANIES TO LOCATE ALL EXISTING LINES WITHIN THE PROJECT AREA: KPLUGAS SERVICE, ANIXA GAS, K.G. & S., SOUTHWESTERN BELL TELEPHONE, MULTIMEDIA CABLEVISION, CITY OF WICHITA SEWER MAINTENANCE AND CITY OF WICHITA WATER DEPARTMENT.

INSPECTION AND TESTING FOR THIS PROJECT IS TO BE PROVIDED BY A LICENSED CONSULTING ENGINEERING FIRM CONTRACTED BY THE OWNER/DEVELOPER. SAID INSPECTION TO BE IN ACCORDANCE WITH THE CITY OF WICHITA STANDARD CONSTRUCTION ENGINEERING PRACTICES AND CERTIFIED BY A LICENSED PROFESSIONAL ENGINEER. NO WORK SHALL BE PERFORMED IN DEDICATED EASEMENTS OR THE PUBLIC RIGHT-OF-WAY BY THE CONTRACTOR WITHOUT SUCH INSPECTION NOR SHALL ANY WORK BE COMMENCED IN DEDICATED EASEMENTS OR PUBLIC RIGHT-OF-WAY WITHOUT WRITTEN AUTHORIZATION BY THE CITY ENGINEER.

THE CONTRACTOR SHALL PROVIDE CONSTRUCTION TRAFFIC CONTROL MEASURES ON 21ST STREET IN ACCORDANCE WITH THE MANUAL ON UNIFORM TRAFFIC CONTROL DEVICES AND THE WICHITA BARRICADE MANUAL. TRAFFIC ON 21ST STREET SHALL BE CARRIED THROUGH CONSTRUCTION.

**GENERAL NOTES - INLETS**

CONCRETE SHALL BE C.O.N. STANDARD PAVING MIX. ALL EDGED EDGES SHALL BE FINISHED WITH AN APPROVED EDGING TOOL.

REINFORCING STEEL SHALL BE A MINIMUM GRADE 40, A.S.T.M. A615. ALL DIMENSIONS RELATIVE TO PLACEMENT OF REINFORCING ARE TO THE CENTERLINE OF BARS UNLESS OTHERWISE NOTED.

INLET CASTINGS SHALL BE MANUFACTURED USING GOOD QUALITY GRAY IRON CONFORMING TO CLASS 20 OF A.S.T.M. DESIGNATION A-4. DIMENSIONS AND WEIGHTS SHOWN ON THE DETAILED DRAWINGS SHALL BE CONSIDERED AS MINIMUM REQUIREMENTS AND ANY DEVIATIONS FROM THE DIMENSIONS SHOWN MUST BE SPECIFICALLY APPROVED. THE FINISHED CASTINGS SHALL BE OF UNIFORM QUALITY, FREE FROM BLOWHOLES, POROSITY, HARD SPOTS, SHRINKAGE DISTORTIONS OR OTHER EFFECTS.

CONSTRUCTION REQUIREMENTS AND MATERIALS FOR MASONRY WALLS SHALL CONFORM TO THE REQUIREMENTS OF THE STANDARD SPECIFICATIONS.

INLET FLOOR SHALL BE SHAPED WITH UNREINFORCED CONCRETE (3 SACK SAND MIX) TO CREATE FLOW CHANNELS AND TO INCREASE HYDRAULIC EFFICIENCY SUCH THAT THE INLET WILL BE SELF-CLEANING BETWEEN ALL INLET AND/OR OUTLET PIPES.

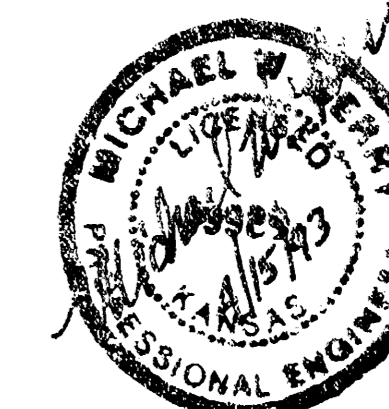
**MODIFICATION OF EXISTING MANHOLE**

THE EXISTING CONCRETE SHALL BE REMOVED TO PROVIDE A SQUARE OPENING APPROXIMATELY SIX INCHES LARGER THAN THE OUTSIDE PIPE DIMENSION. REMOVE ONLY THAT EXISTING REINFORCING STEEL THAT INTERFERES WITH THE PLACING OF THE PROPOSED STORM SEWER. ALL OTHER REINFORCING STEEL SHALL BE THOROUGHLY CLEANED BY BRUSHING AND BENT TO CLEAR THE PROPOSED PIPE. THE PROPOSED PIPE SHALL BE SET TO THE FLOWLINE ELEVATION SHOWN AND THE OPENING BETWEEN THE PIPE AND BREAK LIMITS FILLED WITH CONCRETE.

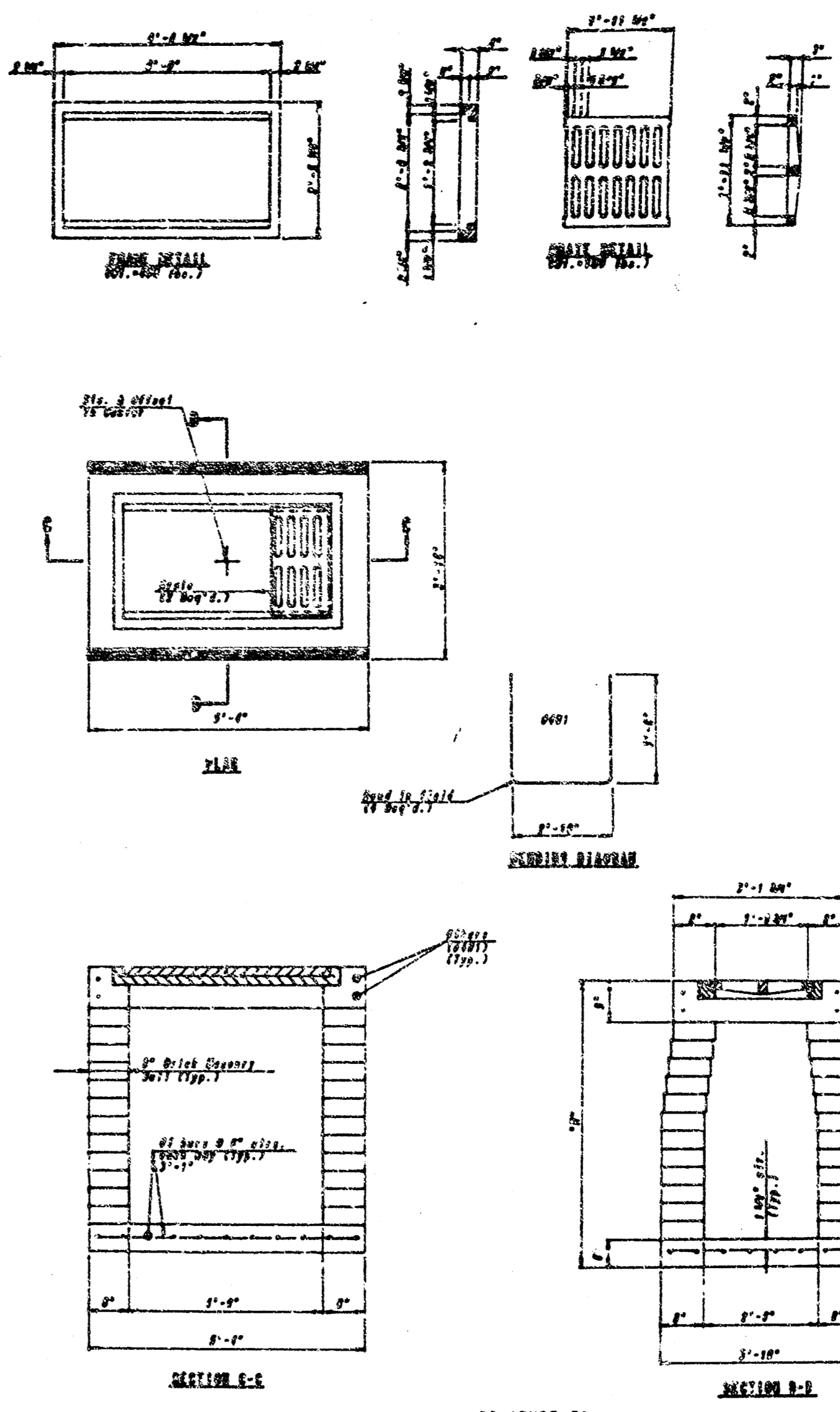
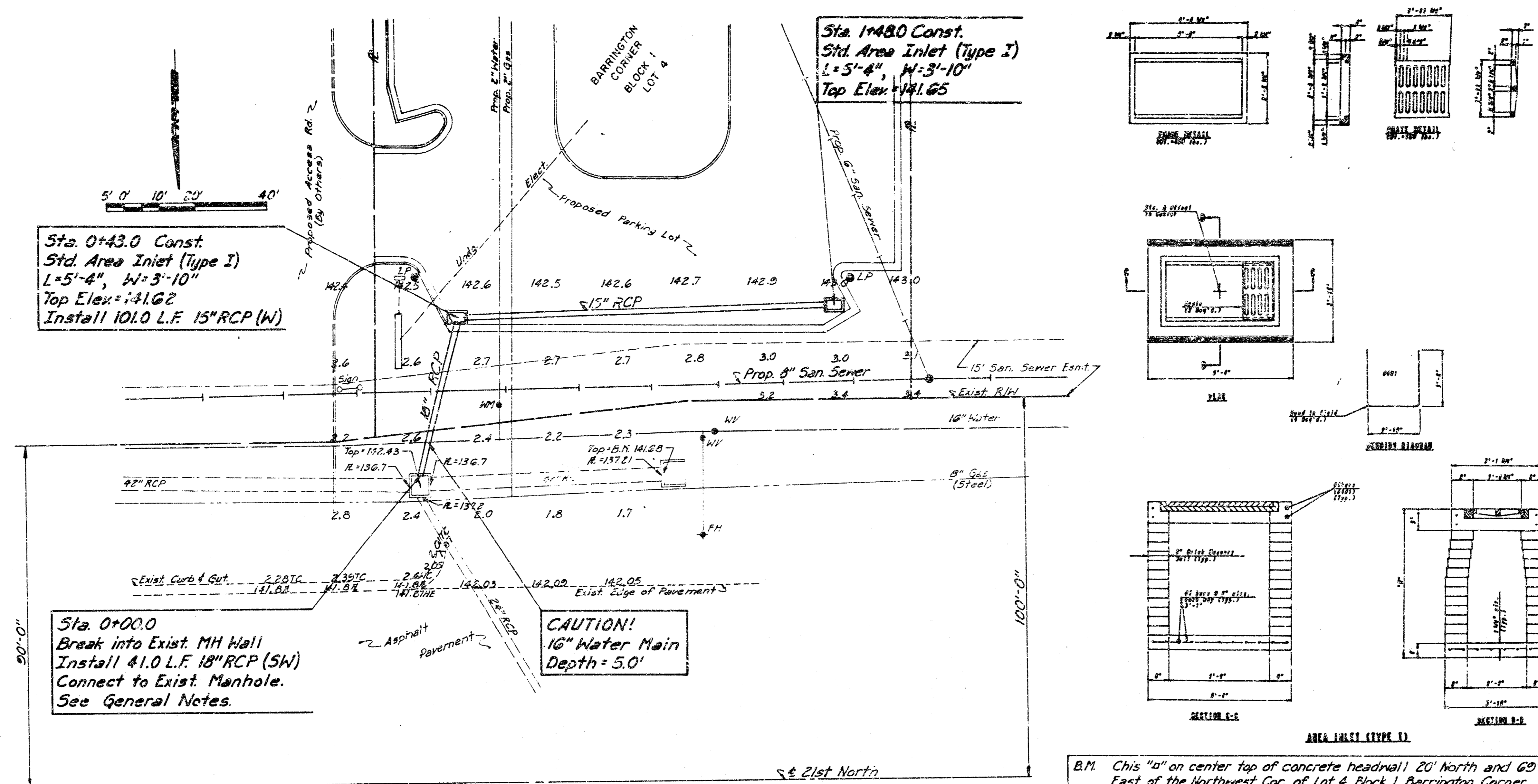
ALL EXISTING CONCRETE SURFACES UPON WHICH NEW CONCRETE IS TO BE PLACED SHALL BE THOROUGHLY BRUSHED AND WASHED WITH CLEAN WATER. THE SURFACE SHALL THEN BE WATER SOAKED AND SHALL BE PAINTED WITH A THICK COAT OF NEAT CEMENT MORTAR IMMEDIATELY PRIOR TO PLACING NEW CONCRETE.

APPROVED AS NOTED  
BY CITY ENGINEER OF WICHITA

Sanitary Sewers \_\_\_\_\_  
Storm Sewers VRH 4/14/95  
Driveway Approaches \_\_\_\_\_  
Water Mains \_\_\_\_\_  
Paving \_\_\_\_\_

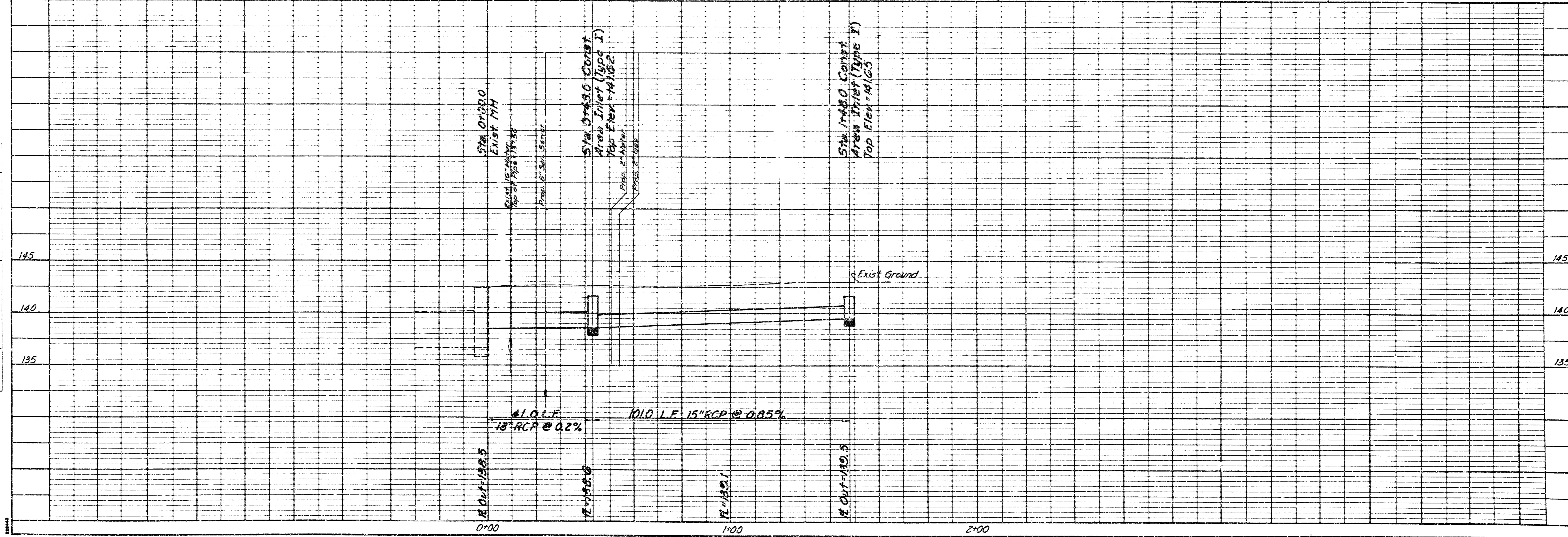


B.M. This "B" on center top of concrete headwall 20' north and 60' east of the Northwest Cor. of Lot 4 Block 1 Barrington Corner Addition to Wichita. Elev = 141.65.



PLAN  
CONTRACTOR TO VERIFY ALL DIMENSIONS AND LOCATIONS OF ALL UTILITIES

PROFILE  
CONTRACTOR TO VERIFY ALL DIMENSIONS AND LOCATIONS OF ALL UTILITIES



McDonald's  
21st & RIDGE ROAD  
**STORM WATER SEWER**  
CITY OF WICHITA PRIVATE PROJECT NO. 383PPS (607861)

PROFESSIONAL ENGINEERING CONSULTANTS, P.A.  
ENGINEERS  
WICHITA, KANSAS  
Designed by McDonald's  
Job No. 36-93097  
Date: Apr. 1995  
Drawn by: BLS