

Bench marks:

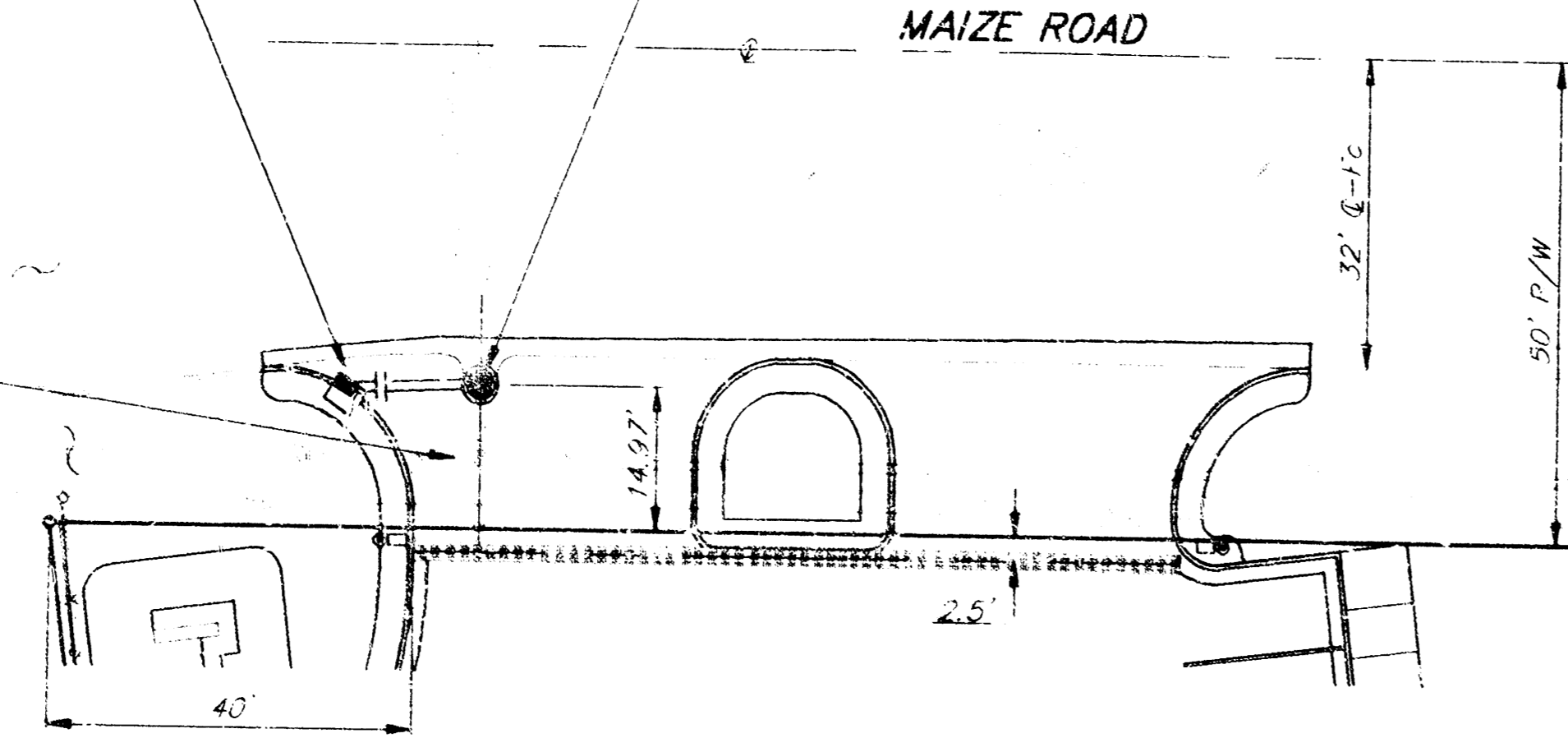
City of Wichita Benchmark, Top of Hubguard at the Southwest Corner of South Bridge (Eastbound lane, West End.) 1/4 Mile East of Maize Rd. on U.S. 54 Hwy.
Elev. = 135.29 (City Datum)

Temp. Benchmark, R.R. Spike in the West Face of HLP on the East Side of Maize Rd. (First P.C. South of R.R. Tracks) 200 ± South of U.S. 54 Hwy.
Elev. = 136.11 (City Datum)

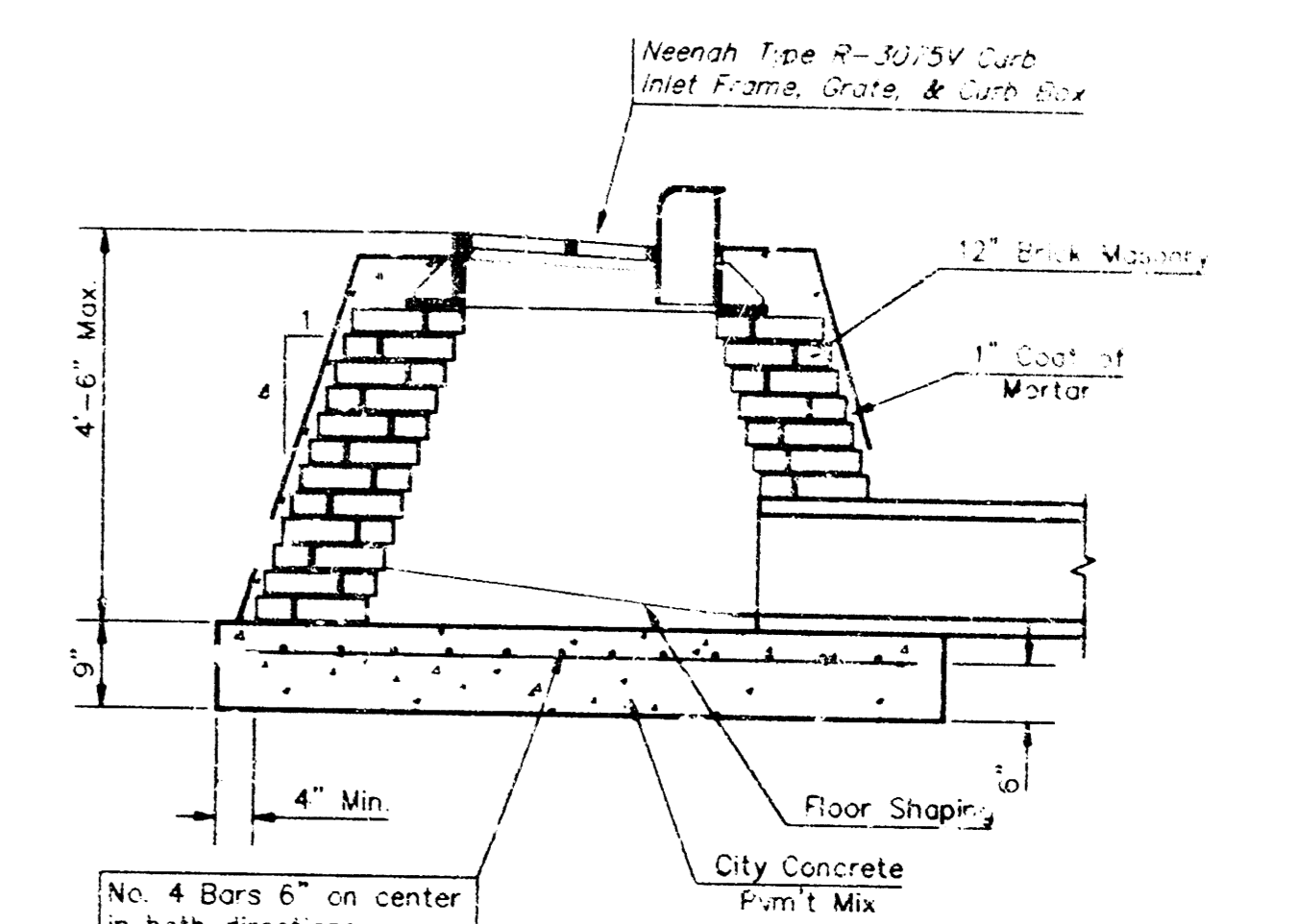
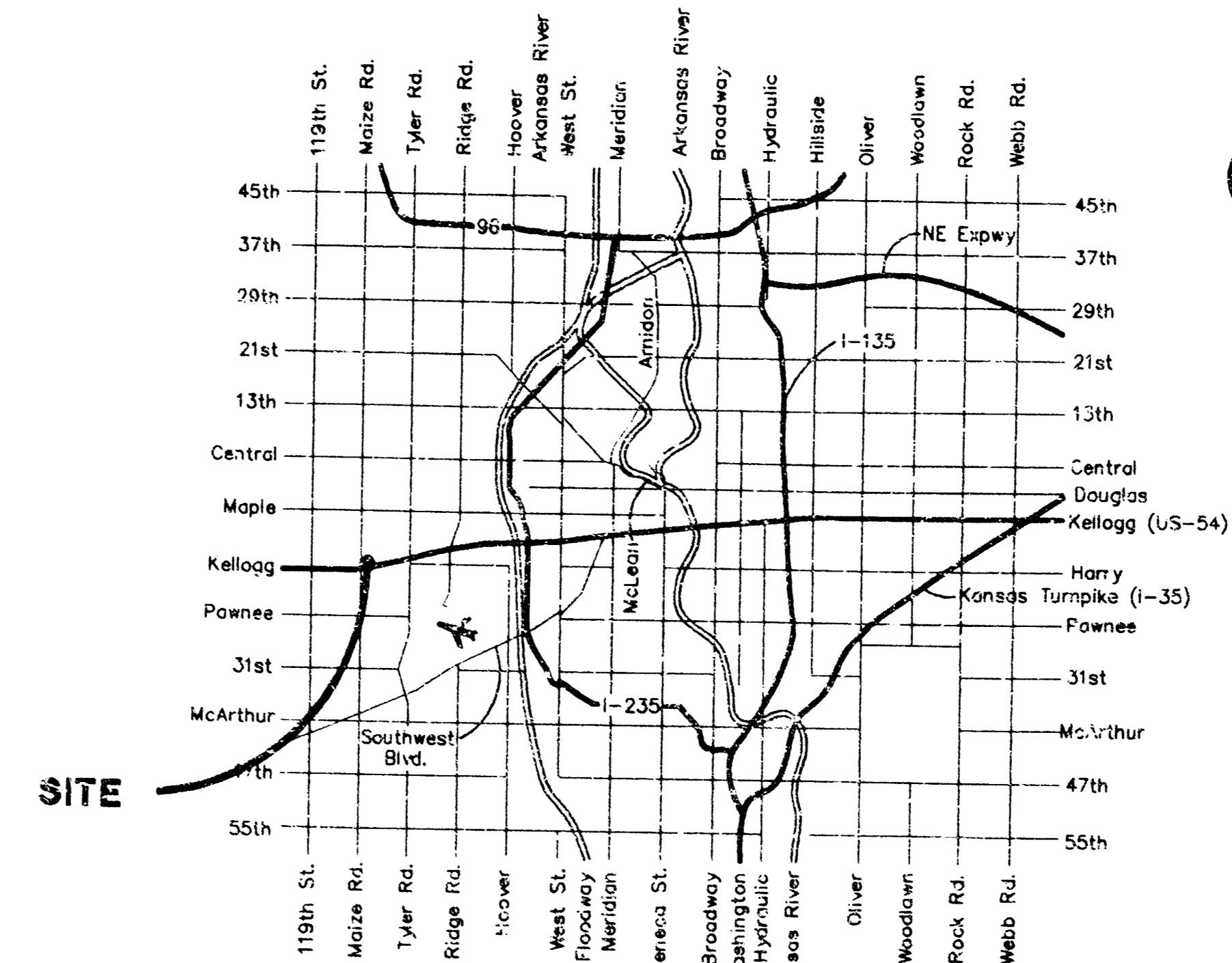
Sta. 0+15.7, Line 1
Construct Curt. Inlet per Detail This Sheet.
Match Existing Top of Curb Elev. Set Flow 0.1' Above Flow at MH
At Sta. 0+00.

Sta. 0+00, Line 1
Remove Existing Neenan Grate and Modify Type B Special Shallow Manhole. Replace with Std. C.O.W. Manhole Cover and Ring.
Top Elev. = 135.50

CAUTION!
Water & Gas Lines
Contractor To Verify
Depth and Location
and Coordinate Work
with Utility Owners
where Necessary.



Scale: 1" = 20' Horizontal
1" = 5' Vertical
● = Iron



MODIFIED SPECIAL SHALLOW TYPE "B" MANHOLE

GENERAL NOTES

- Contractor will be required to provide notice to utility companies a minimum of twenty-four (24) hours prior to any excavation, as follows:
Kansas One-Call 687-2470
The Contractor must notify the following in case of an emergency:
Cablevision 262-4270
or 263-2061
K.P.L. Gas Service Company 263-7511
Kansas Gas & Electric Company 264-1141
Arkia Gas Company 942-8350
Southwestern Bell Telephone Company 1-571-2611
- Exist. utilities and their locations, as shown on the plans, represent the best information obtainable for design. Location information has been obtained from the various utility companies and is either from company record drawings or company-provided field locations. The Contractor will be required to work around existing utilities which do not conflict with proposed construction.
- Traffic affected by the construction on this project shall be handled in accordance with the latest edition of the Manual on Uniform Traffic Control Devices.
- The Contractor to verify utility locations prior to construction of this project.
- Site contractor shall be required to obtain a permit from the Kansas Dept. of Transportation for work within U.S. 54 (Kellogg) right-of-way. Contact Ronney Crowell at 744-1271 to obtain a permit.

Handwritten signature and date: 8/21/95

APPROVED AS NOTED
BY CITY ENGINEER OF WICHITA

Storm Sewers VRH 8/21/95

NOTE TO CONTRACTORS
Inspection and testing for this project is to be provided by a licensed Consulting Engineering Firm under contract with the Owner/Developer. Said inspection to be in accordance with the City of Wichita standard construction engineering practices and performed by a licensed Professional Engineer. No work shall be performed in dedicated easements or public right-of-way by the Contractor without such inspection nor shall any work be commenced without written authorization by the City Engineer. All Construction and Materials shall comply with the City of Wichita Specifications and Standards (on file and available in the City Engineer's office).

ASBUILT AS PER PLAN 3/11/96 JFB

SWS MODIFICATION
KELLOGG & MAIZE ROAD

BAUGHMAN COMPANY P.A.
ENGINEERING, SURVEYING, & PLANNING

PROJECT NUMBER
581 PPS (607861)

DESIGNER: [] DRAWN: [] APPROVED: [] DATE: [] SCALE: [] NOTED: []

SHEET **1** OF **1**

