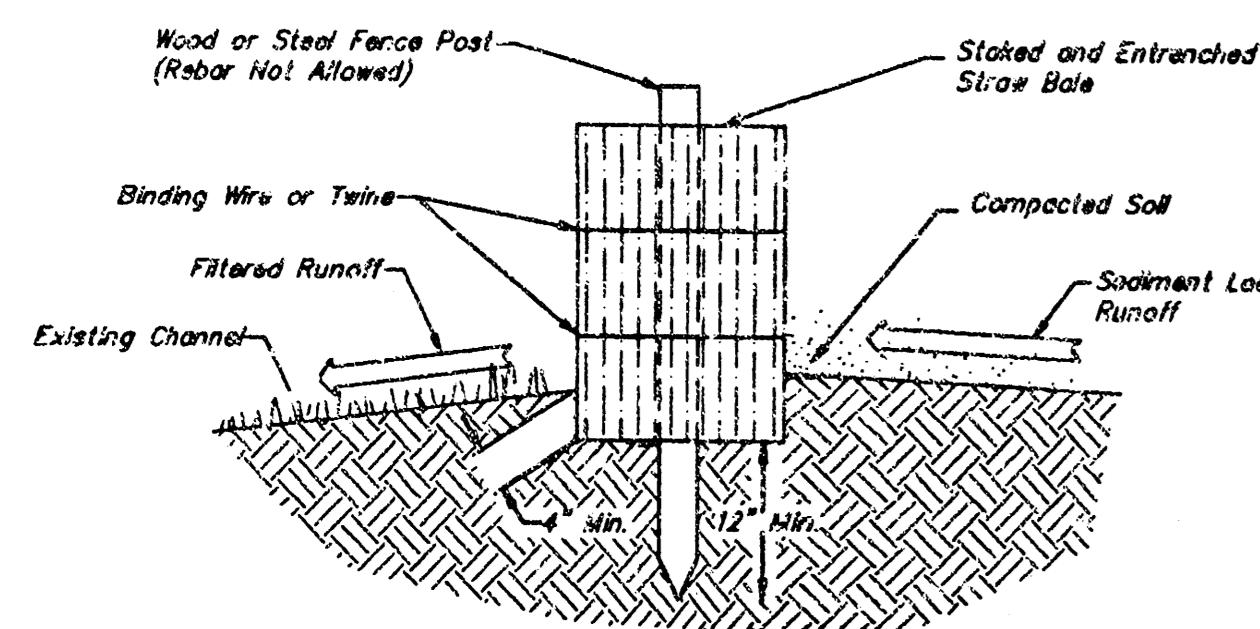


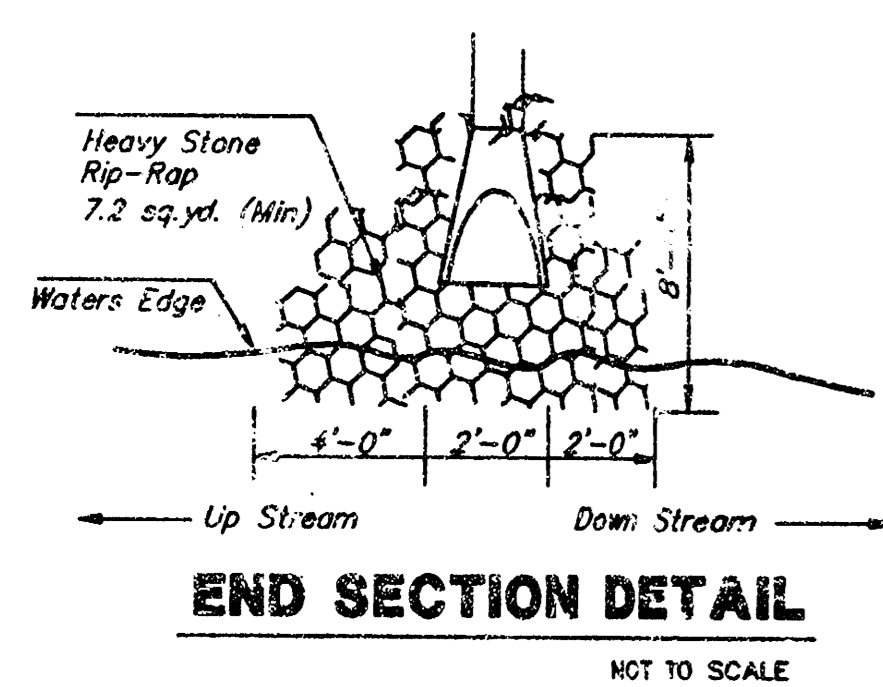
**PROJECT DATA:**

BENCH MARK: (BM#1)  
 Square Cut "C" on top of curb,  
 NW Side of Maize Court.  
 MSL Elevation: 1324.14  
 City Datum Elev: 136.74

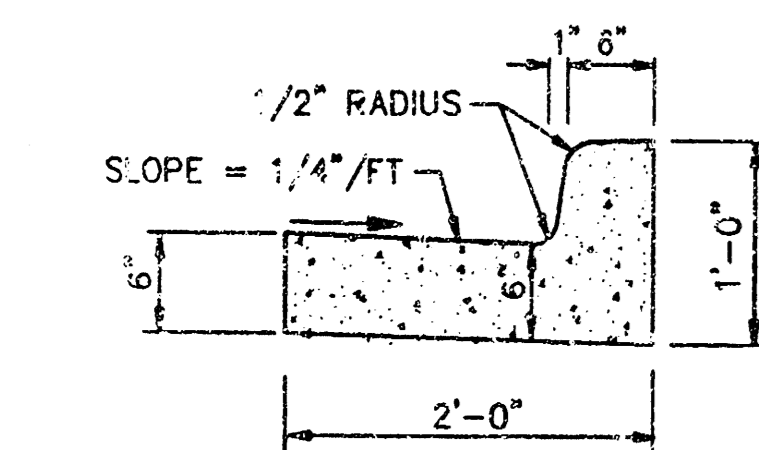
Drainage Area	
Inlet One:	13,650 sq.ft. C=0.7 Q=1.6 cfs
Inlet Two:	9,975 sq.ft. C=0.7 Q=1.2 cfs
Inlet Three:	5,050 sq.ft. C=0.7 Q=0.8 cfs



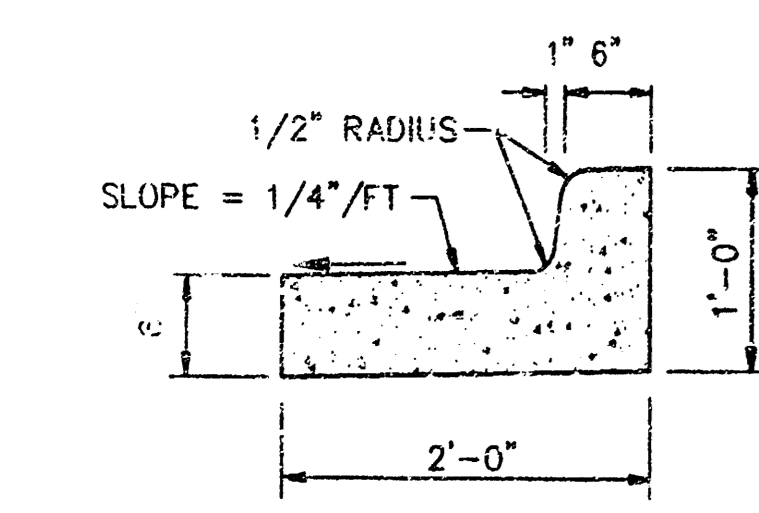
**TYP. STRAW BALE BARRIER DETAIL**  
 NOT TO SCALE



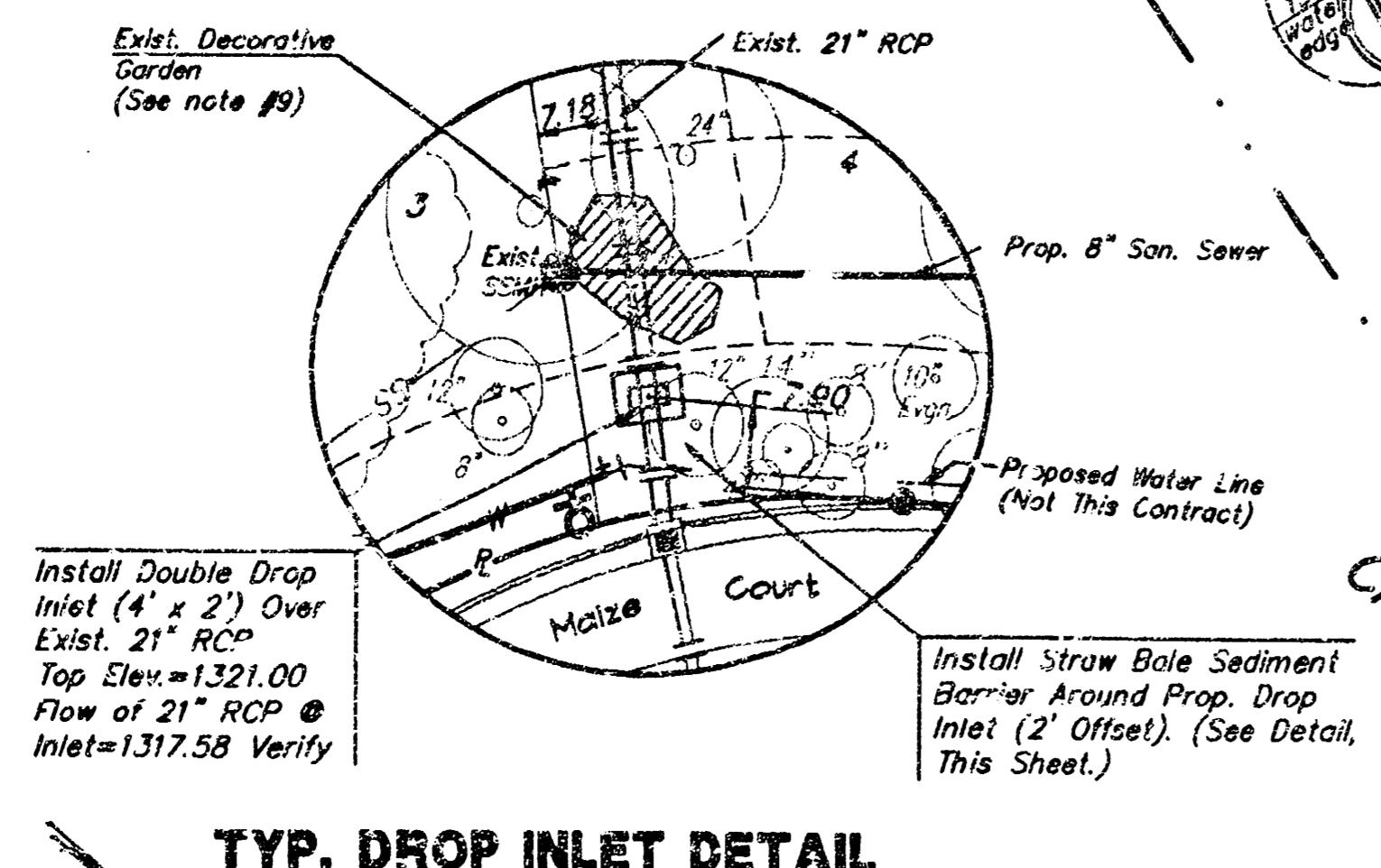
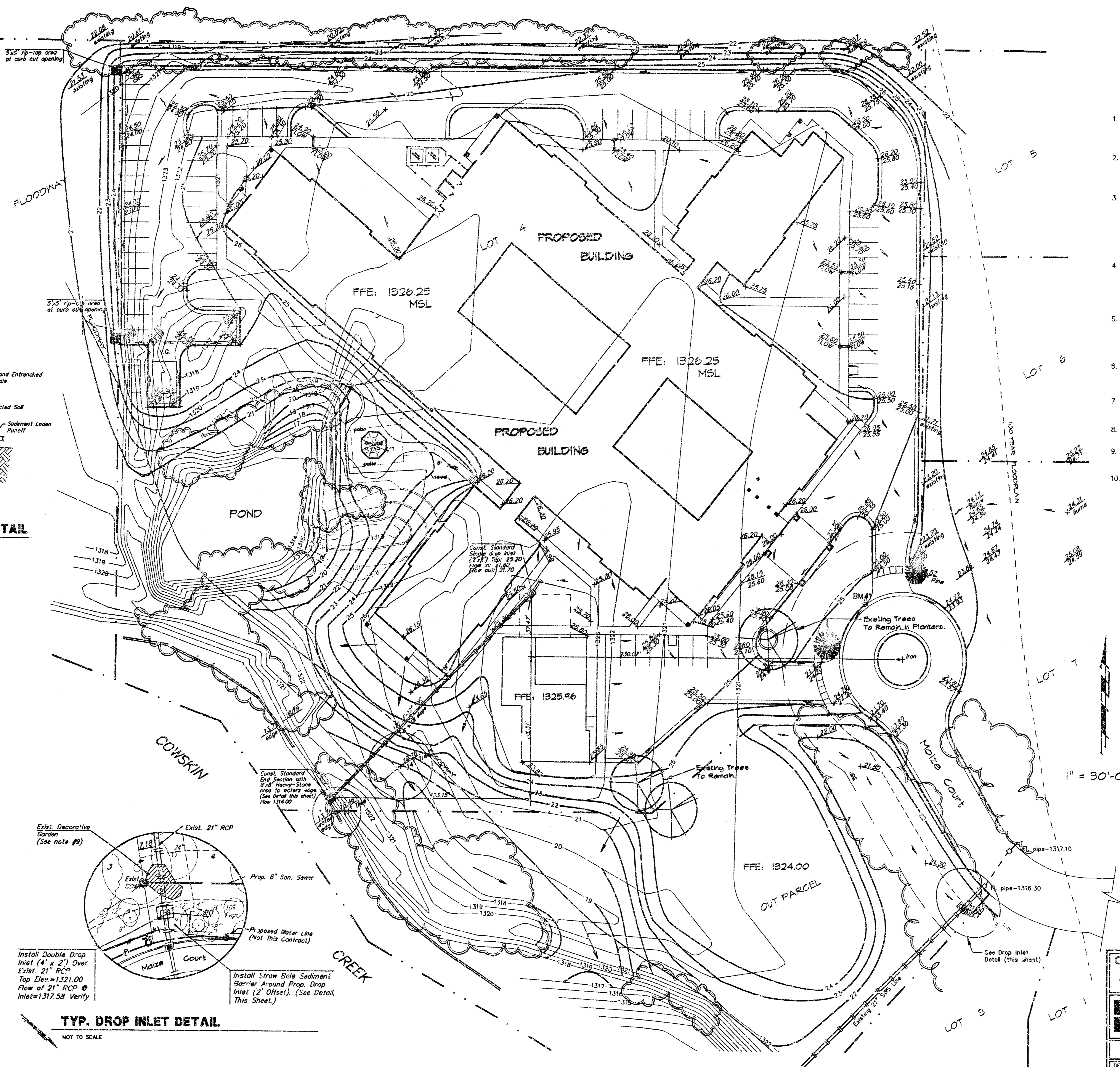
**END SECTION DETAIL**  
 NOT TO SCALE



**TYP. HIGH EDGE CURB AND GUTTER DETAIL**  
 NOT TO SCALE



**TYP. LOW EDGE CURB AND GUTTER DETAIL**  
 NOT TO SCALE



**TYP. DROP INLET DETAIL**  
 NOT TO SCALE

**GENERAL NOTES:**

- Contractor is responsible for contacting all utility companies to verify exact location of all existing utilities before beginning excavation of project.
- Contractor will be required to provide notice to utility companies a minimum of twenty-four (24) hours prior to any excavation.
- Existing utilities and their locations, as shown on the plans, represent the best information obtainable for design. Location information has been obtained from various utility companies and is either from company record drawings or company-provided field locations. The contractor will be required to work around existing utilities which do not conflict with proposed construction.
- The contractor is responsible for preserving property irons. The contractor is required to re-establish any property irons which are damaged or destroyed by his construction operations. Such irons shall be re-established by a licensed land surveyor in accordance with state laws.
- Contractor shall not start work on the project until the project inspector is assigned to the project and is present on the site. Any work done without inspection will be required to be uncovered for inspection.
- Spot elevations shown are for graphic representation of drainage concept. Spot elevations shall take precedence over contour lines.
- Contractor shall be responsible for any damage done to existing utilities.
- Elevations and Spot Grades on Plan are set to MSL Elevations.
- Contractor shall salvage Decorative Rock, Shrubs, and Soil from Decorative Garden and restore items following construction.
- Contractor shall preserve all existing trees and vegetation which is NOT in direct conflict with the storm sewer construction.

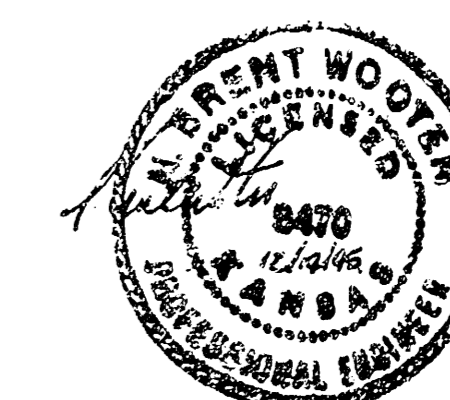
BY CITY ENGINEER OF WICHITA

Sanitary Sewers \_\_\_\_\_  
 Storm Sewers VRH 12/18/95  
 Driveway Approaches \_\_\_\_\_  
 Water Mains \_\_\_\_\_  
 Paving \_\_\_\_\_

**NOTE TO CONTRACTORS**

Inspection and testing for this project is to be provided by a Licensed Consulting Engineering firm under contract with the Owner/Developer. Said inspection to be in accordance with the City of Wichita standard construction engineering practices and certified by a Licensed Professional Engineer. No work shall be performed in dedicated easements or public right-of-way by the Contractor without such inspection nor shall any work be commenced without written authorization by the City Engineer. All Construction and Materials shall comply with the City of Wichita Specifications and Standards (on file and available in the City Engineer's Office).

Michael E. Lindebak, P.E. - City Engineer  
 City of Wichita Private Project  
 Number: 600PPS (607861)



**GRADING AND DRAINAGE IMPROVEMENTS**  
**PARKWEST PLAZA**  
 ESTATES

**BAUGHMAN COMPANY P. A.**  
 ENGINEERING, SURVEYING, & PLANNING  
 316-262-7271 • 315 ELLIS • WICHITA, KANSAS 67211

PROJECT NUMBER		SHEET	
600PPS (607861)		18-3-3-2	
DESIGN	DRAWN	APPROVED	DATE
NEW/JUL	JUL	NEW	DEC. 1995
SCALE		1"=30'	