

PRIVATE  
FLOODWAY DETENTION PLANS FOR  
**HEARTSPRING**

ROCK AT 29TH. ST. NO.

INDEX NO. 607861

USER CODE 601 PPS

CITY OF WICHITA, KANSAS  
MICHAEL E. LINDESAK, CITY ENGINEER

**GENERAL NOTES**

- THE TOPS OF INLETS AS NOTED ON THE PLANS MAY VARY SO AS TO MEET PROPOSED TOP OF CURB ELEVATIONS OR PAVEMENT ELEVATIONS. THE FIELD ENGINEER SHALL LOCATE INLETS WITH REFERENCE TO PROPOSED PAVING PLANS OF THE PERTINENT STREETS.
- ALL CONCRETE SHALL BE STANDARD PAVING MIX UNLESS OTHERWISE NOTED.
- THE CONTRACTOR SHALL BE RESPONSIBLE FOR PRESERVING PROPERTY IRONS. THE CONTRACTOR SHALL BE REQUIRED TO RE-ESTABLISH ANY PROPERTY IRONS WHICH ARE DAMAGED OR DESTROYED BY HIS CONSTRUCTION OPERATIONS. SUCH IRONS SHALL BE RE-ESTABLISHED BY A LICENSED LAND SURVEYOR IN ACCORDANCE WITH STATE LAWS.
- TREES TO BE REMOVED ARE MARKED. ALL TREES WHICH IN THE OPINION OF THE FIELD ENGINEER CAN BE SAVED, SHALL BE SAVED.
- EXISTING UTILITIES AND THEIR LOCATIONS, AS SHOWN ON THE PLANS REPRESENT THE BEST INFORMATION OBTAINABLE FOR DESIGN. LOCATION INFORMATION HAS BEEN OBTAINED FROM THE VARIOUS COMPANIES AND IS EITHER FROM COMPANY UTILITY DRAWINGS OR COMPANY PROVIDED FIELD LOCATIONS. THE PLAN LOCATIONS SHOWN ARE NOT GUARANTEED. ADDITIONAL EXISTING UTILITIES MAY ALSO BE ENCOUNTERED.
- CONTRACTOR WILL BE REQUIRED TO PROVIDE A MINIMUM ADVANCE NOTICE OF FORTY-EIGHT (48) HOURS TO UTILITY COMPANIES PRIOR TO STARTING ANY EXCAVATION AS FOLLOWS:  
  
KANSAS ONE-CALL 1-800-344-7233  
THE CONTRACTOR MUST NOTIFY THE FOLLOWING IN CASE OF AN EMERGENCY:  
CABLEVISION 263-2061  
ARKLA GAS COMPANY 263-7511  
KANSAS GAS & ELECTRIC 261-1141  
SOUTHWEST BELL TELEPHONE COMPANY 1-571-2611  
CITY OF WICHITA WATER DEPARTMENT 268-4908  
CITY OF WICHITA SEWER MAINTENANCE 268-4071
- UNLESS SHOWN OR STATED OTHERWISE ON THESE DRAWINGS, MATERIALS AND CONSTRUCTION SHALL BE IN ACCORDANCE WITH CITY OF WICHITA SPECIFICATIONS.
- RUBBLE FROM THE REMOVAL OF MISCELLANEOUS STRUCTURES AND EXCESS EXCAVATION WHICH IS TO BE WASTED SHALL BE DISPOSED OF ON SITES TO BE PROVIDED BY THE CONTRACTOR. THESE SITES SHALL BE APPROVED BY THE ENGINEER AS TO SUITABILITY, APPEARANCE AND SITE LOCATION. LOCATIONS THAT, IN THE OPINION OF THE ENGINEER, WILL LEAVE AN UNSIGHTLY APPEARANCE WILL NOT BE APPROVED. ALL DISPOSAL SITES MUST BE APPROVED BY THE KANSAS DEPARTMENT OF HEALTH AND ENVIRONMENT. MATERIAL EITHER STOCKPILED OR DISPOSED OF IN A FLOOD PLAIN WOULD REQUIRE A KANSAS STATE BOARD OF AGRICULTURE PERMIT. ANY MATERIAL DUMPED IN WATERS OF THE UNITED STATES OR WETLANDS IS SUBJECT TO U.S. CORPS OF ENGINEERS PERMITTING REGULATIONS. ANY MATERIAL BURIED OR STOCKPILED BEYOND APPROVED CONSTRUCTION LIMITS WOULD REQUIRE ADDITIONAL ARCHAEOLOGICAL INVESTIGATIONS UNLESS BURIED IN A PREVIOUSLY APPROVED BORROW LOCATION.
- SITE RESTORATION AND PREPARATION SHALL BE SUBSIDIARY TO THE PROJECT.

APPROVED AS NOTED  
BY CITY ENGINEER OF WICHITA

SANITARY SEWERS \_\_\_\_\_

STORM SEWERS VRH 1/16/96

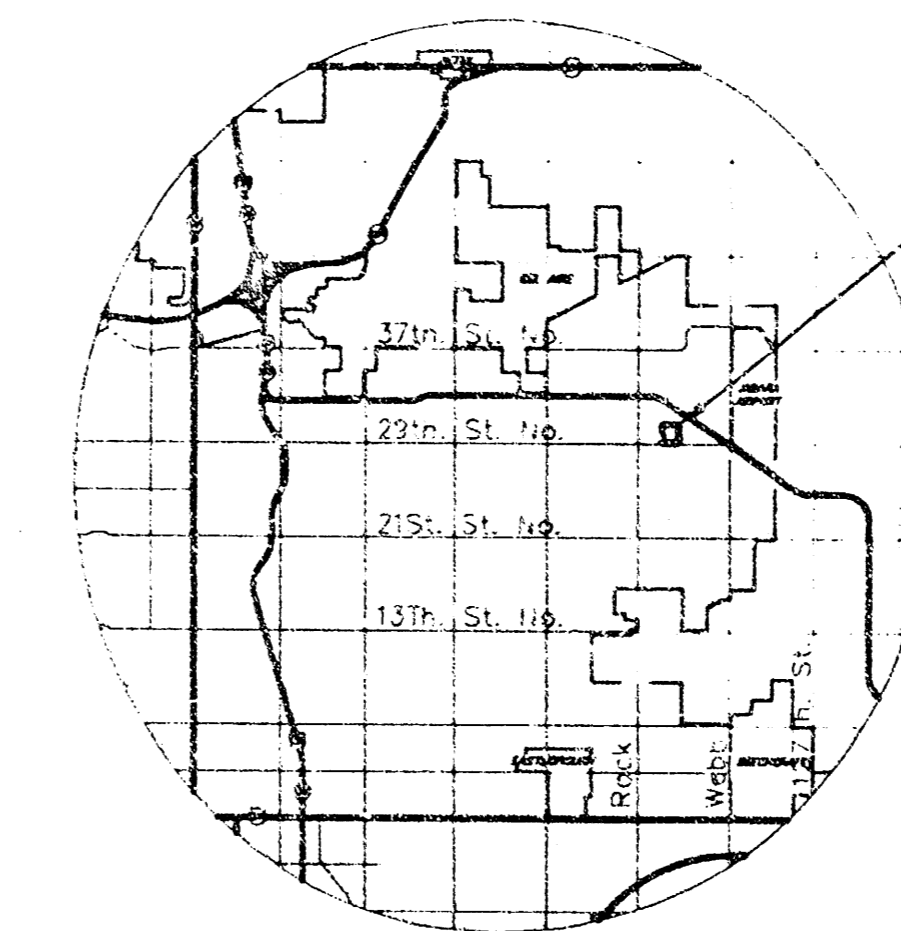
DRIVEWAY APPROACHED \_\_\_\_\_

WATER MAINS \_\_\_\_\_

PAVING \_\_\_\_\_

**NOTE TO CONTRACTOR**

INSPECTION AND TESTING FOR THIS PROJECT IS TO BE PROVIDED BY A LICENSED CONSULTING ENGINEERING FIRM UNDER CONTRACT WITH THE OWNER/DEVELOPER. SAID INSPECTION TO BE IN ACCORDANCE WITH THE CITY OF WICHITA STANDARD CONSTRUCTION ENGINEERING PRACTICES AND CERTIFIED BY A LICENSED PROFESSIONAL ENGINEER. NO WORK SHALL BE PERFORMED IN DEDICATED EASEMENTS OR THE PUBLIC RIGHT-OF-WAY BY THE CONTRACTOR WITHOUT SUCH INSPECTION NOR SHALL ANY WORK BE COMMENCED IN DEDICATED EASEMENTS OR PUBLIC RIGHT-OF-WAY WITHOUT WRITTEN AUTHORIZATION BY THE CITY ENGINEER.



VICINITY MAP



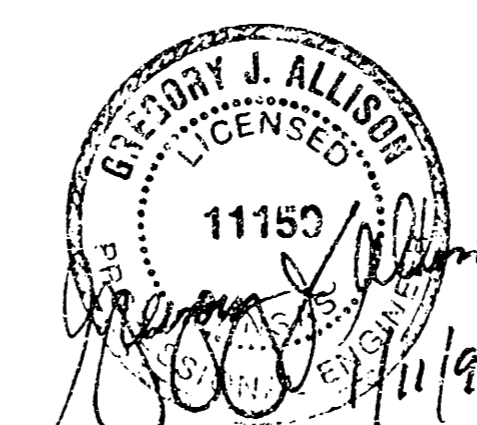
SCALE: 1"=150'

**INDEX TO DRAWINGS**

SHEET NO.	DESCRIPTION
1	TITLE SHEET
2	PLAN
3	FINAL PLAT

**BENCHMARKS**

- BM 1 "I" CUT ON S. T.C. 29TH ST. N. ±530' W. OF THE CL. OF CYPRESS ELEV.=219.70
- BM 2 CITY DISC IN NW CORNER OF RCB ON 29TH N. ±100' E. OF THE S. 1/4 CORNER SEC. 32-26S-2E ELEV.=215.65
- BM 3 CITY DISC IN NE CORNER OF RCB ON 29TH N. ±550' W. OF THE S. 1/4 CORNER SEC. 32-26S-2E ELEV.=215.83
- BM 4 "I" POST 5' S. & 30' E. OF THE NW COR. OF LOT 5-1 MEDITERRANEAN PLAZA ELEV.=229.75
- BM 5 "I" CUT T.C. @ SE CORNER LOT 8 BLOCK 1 ON CYPRESS. ELEV.=223.64
- BM 6 "I" CUT TOP HUBGUARD ON NE CORNER RCB CROSSING CYPRESS @ NW CORNER LOT 9 BLOCK 2. ELEV.=226.43
- BM 7 "I" CUT TOP HUBGUARD ON NW CORNER RCB CROSSING CYPRESS @ N. CORNER LOT 12 BLOCK 1. ELEV.=223.98



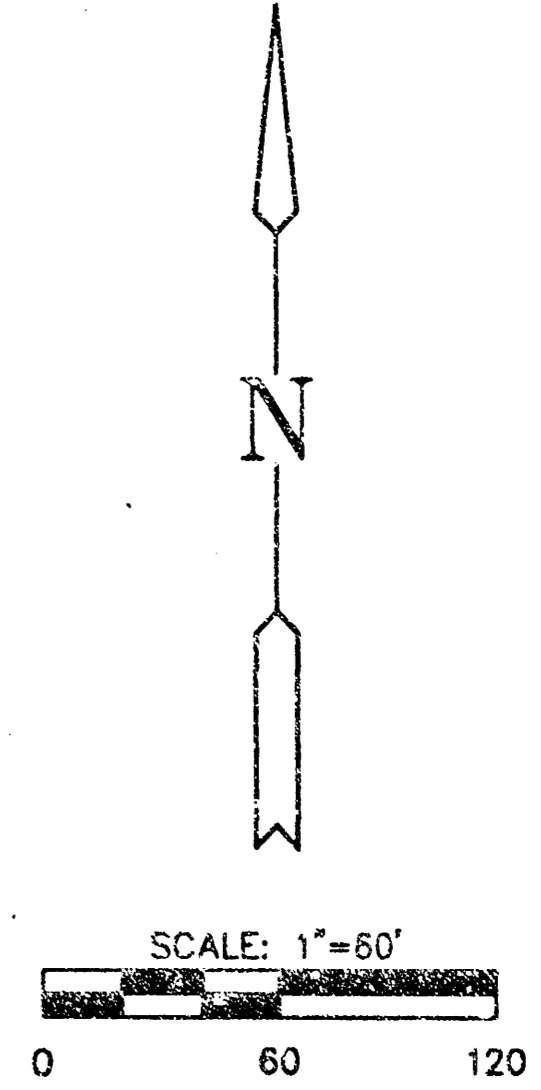
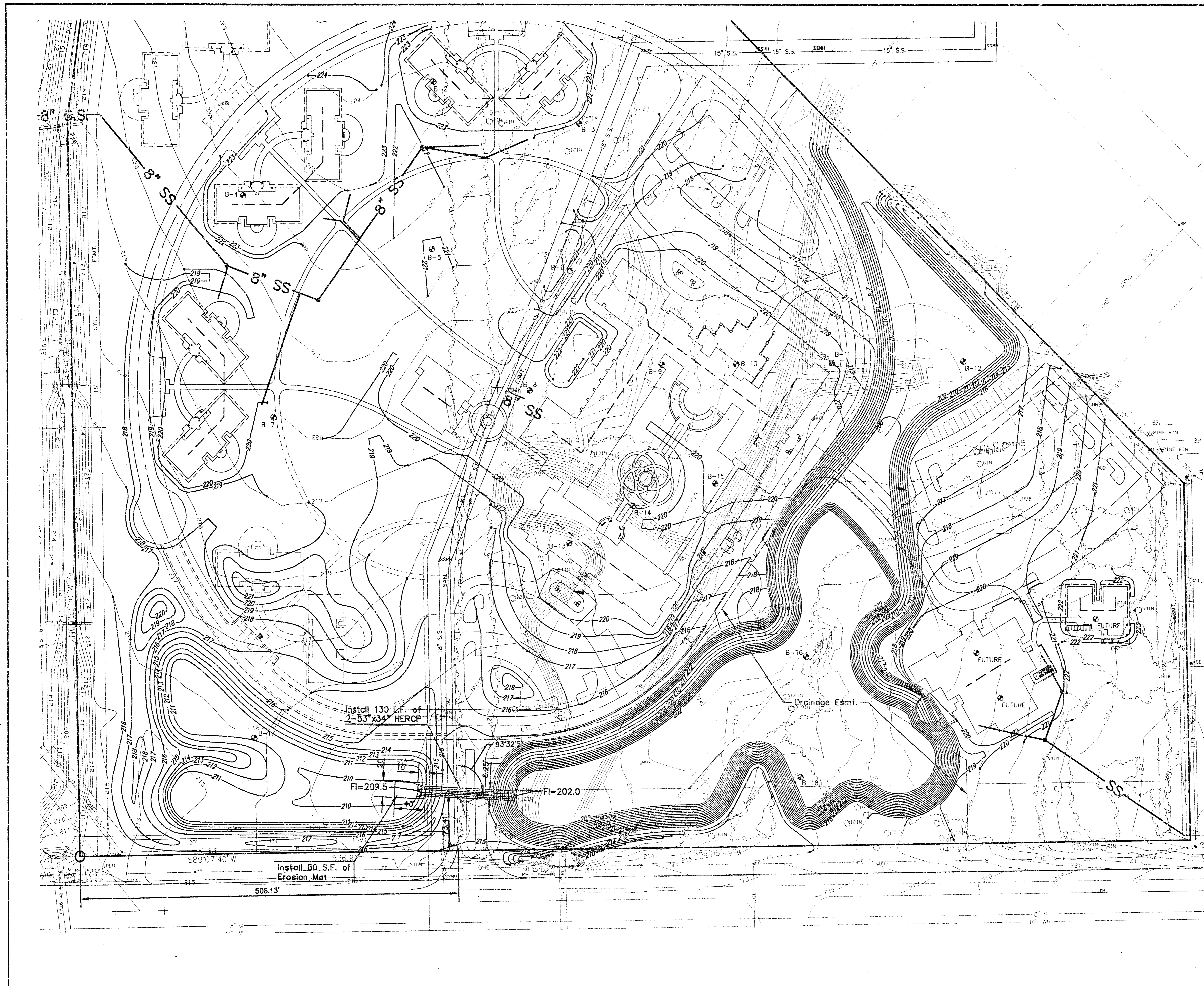
**HEARTSPRING**  
PROJECT NAME

**FLOODWAY DETENTION**  
SHEET TITLE

MID-KANSAS ENGINEERING CONSULTANTS, INC.  
411 N. WEBB ROAD  
WICHITA, KS. 67206  
316-684-9600

DESIGN BY: GJA DRAWN BY: WNJ CHECKED BY: GJA

DATE: DECEMBER 1995 JOB NO.: 95033-DT SHEET/OF: 1 / 3



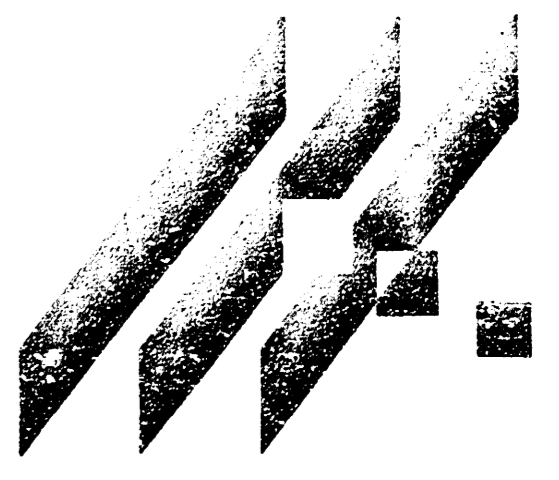
**HEARTSPRING**  
PROJECT NAME

**FLOODWAY**  
DESIGN TITLE

GJA DESIGN | MWJ DRAWN BY.

GJA CHECKED BY. | DEC. 1995 DATE

95033-D1 | 2 / 3  
JOB NO. | SHEET OF

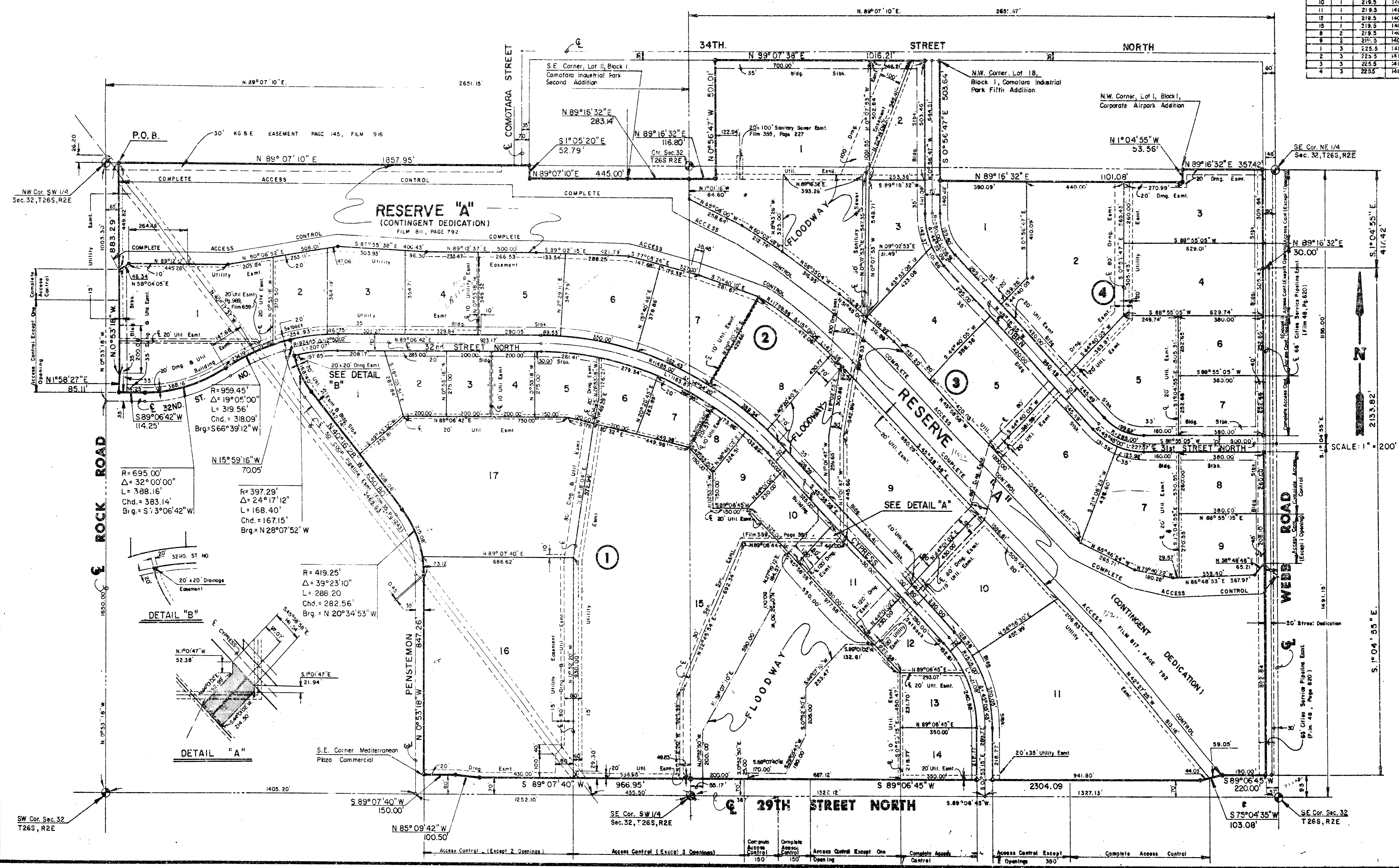


MID-KANSAS ENGINEERING  
CONSULTANTS, INC.  
411 N. WEBB ROAD  
WICHITA, KS. 67206  
316-684-9600

P:\CIVIL\95033\95033-D1.dwg 9/23/95 11:16:06

**FINAL PLAT OF**  
**MEDITERRANEAN PLAZA**  
 AN ADDITION TO WICHITA, SEDGWICK COUNTY, KANSAS

Lot No.	Block No.	Minimum Plat Area (U.S.G.S.)	Minimum Plat Area (U.S.G.S.)
10	1	219.5	1406.9
11	1	219.5	1406.9
12	1	219.5	1406.9
13	1	219.5	1406.9
14	2	219.5	1406.9
15	2	219.5	1406.9
16	3	225.5	1412.9
17	3	225.5	1412.9
18	3	225.5	1412.9



14-41