

GENERAL NOTES

1. CONTRACTOR WILL BE REQUIRED TO PROVIDE A MINIMUM ADVANCE NOTICE OF TWENTY-FOUR (24) HOURS TO UTILITY COMPANIES PRIOR TO STARTING ANY EXCAVATION.
2. ALL WORK SHALL BE COMPLETED IN ACCORDANCE WITH CITY OF WICHITA, KANSAS STANDARD SPECIFICATIONS.
3. EXISTING UTILITIES AND THEIR LOCATIONS, AS SHOWN ON THE PLANS, REPRESENT THE BEST INFORMATION OBTAINABLE FOR DESIGN. LOCATION INFORMATION HAS BEEN OBTAINED FROM THE PROVIOUS UTILITY COMPANIES AND IS EITHER FROM COMPANY RECORD DRAWINGS OR COMPANY PROVIDED FIELD LOCATIONS. THE CONTRACTOR WILL BE REQUIRED TO WORK AROUND EXISTING UTILITIES WITHIN THE RIGHT-OF-WAY WHICH DO NOT CONFLICT WITH PROPOSED CONSTRUCTION.
4. RUBBLE FROM THE REMOVAL OF MISCELLANEOUS STRUCTURES AND EXCESS EXCAVATION WHICH IS TO BE WASTED SHALL BE DISPOSED OF ON SITES TO BE PROVIDED BY THE CONTRACTOR. THESE SITES SHALL BE APPROVED BY THE ENGINEER AS TO SUITABILITY, APPEARANCE AND SITE LOCATION. LOCATIONS THAT, IN THE OPINION OF THE ENGINEER, WILL LEAVE UNSATISFACTORY APPEARANCE WILL NOT BE APPROVED.
5. THE CONTRACTOR SHALL BE RESPONSIBLE FOR PRESERVING PROPERTY IRONS. THE CONTRACTOR WILL BE REQUIRED TO RE-ESTABLISH ANY PROPERTY IRONS WHICH ARE DAMAGED OR DESTROYED BY HIS CONSTRUCTION OPERATIONS. SUCH IRONS SHALL BE RE-ESTABLISHED BY A LICENSED LAND SURVEYOR OR IN ACCORDANCE WITH STATE LAW.
6. GRASS AREAS DISTURBED BY CONSTRUCTION OR STORAGE OF MATERIALS SHALL BE REPLANTED EITHER BY SEEDING OR SOUDDING WITH THE SAME TYPE OF GRASS AS WAS EXISTING PRIOR TO WATER LINE CONSTRUCTION. SEE SPECIAL PROVISIONS IN THE STANDARD SPECIFICATION NO. 14533 FOR SEEDING AND SOUDDING OF COOL SEASON AND WARM SEASON GRASSES.

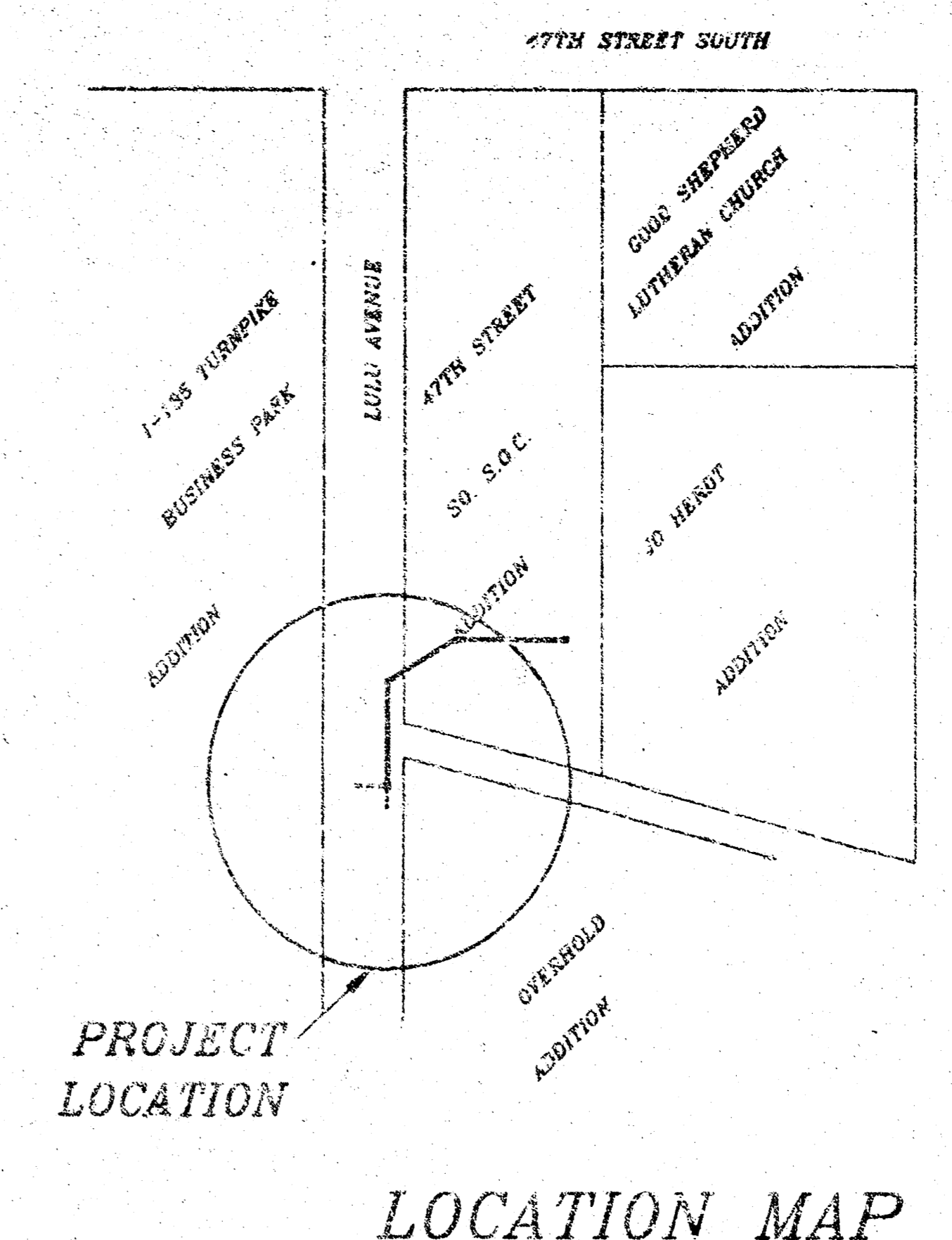
SCALE:
 PLAN: 1" = 20'
 PROFILE: 1" = 20' (H)
 1" = 5' (V)

INDEX:

- SHEET 1 PLAN-PROFILE SHEET
- SHEET 2 DROP INLET DETAIL SHEET

LEGEND

- EXISTING TREE
- GAS METER
- EXISTING FIRE HYDRANT
- EXISTING LIGHT POLE
- EXISTING POWER POLE
- CMP CORRUGATED METAL PIPE
- RCP REINFORCED CONCRETE PIPE
- EXISTING CONTOURS
- EXISTING SPOT ELEVATIONS
- PARKING METER
- SIGNS
- TRAFFIC SIGNAL
- UNDERGROUND WATER LINE
- UNDERGROUND TELEPHONE
- UNDERGROUND ELECTRICAL
- UNDERGROUND GAS
- EXISTING WATER VALVE
- EXISTING WATER METER
- EXISTING MANHOLE



LOCATION MAP

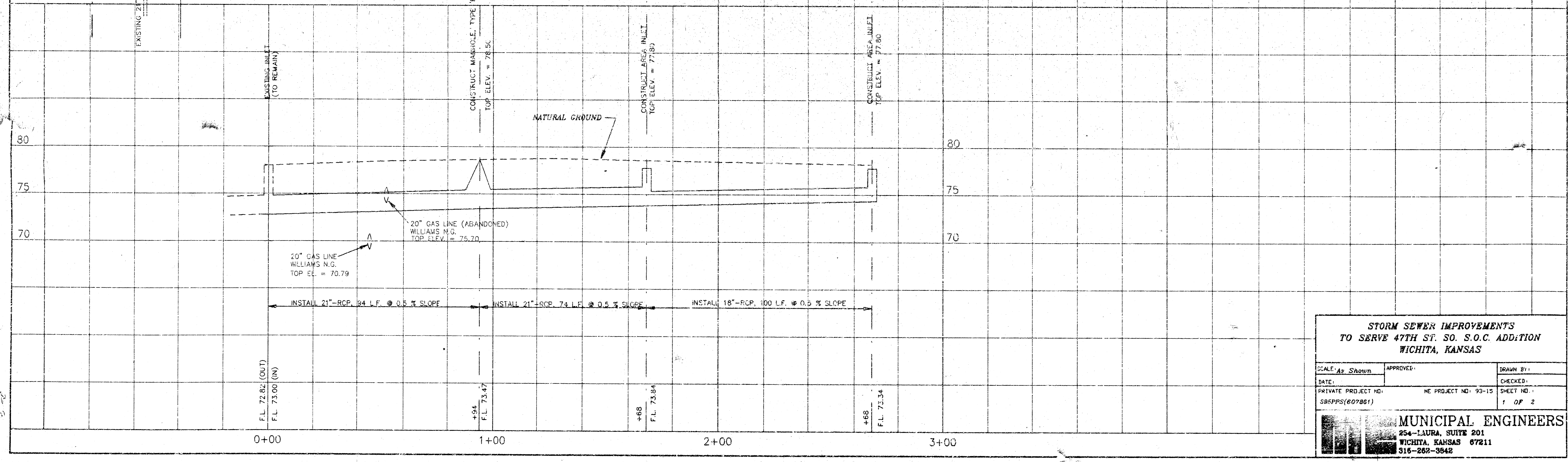
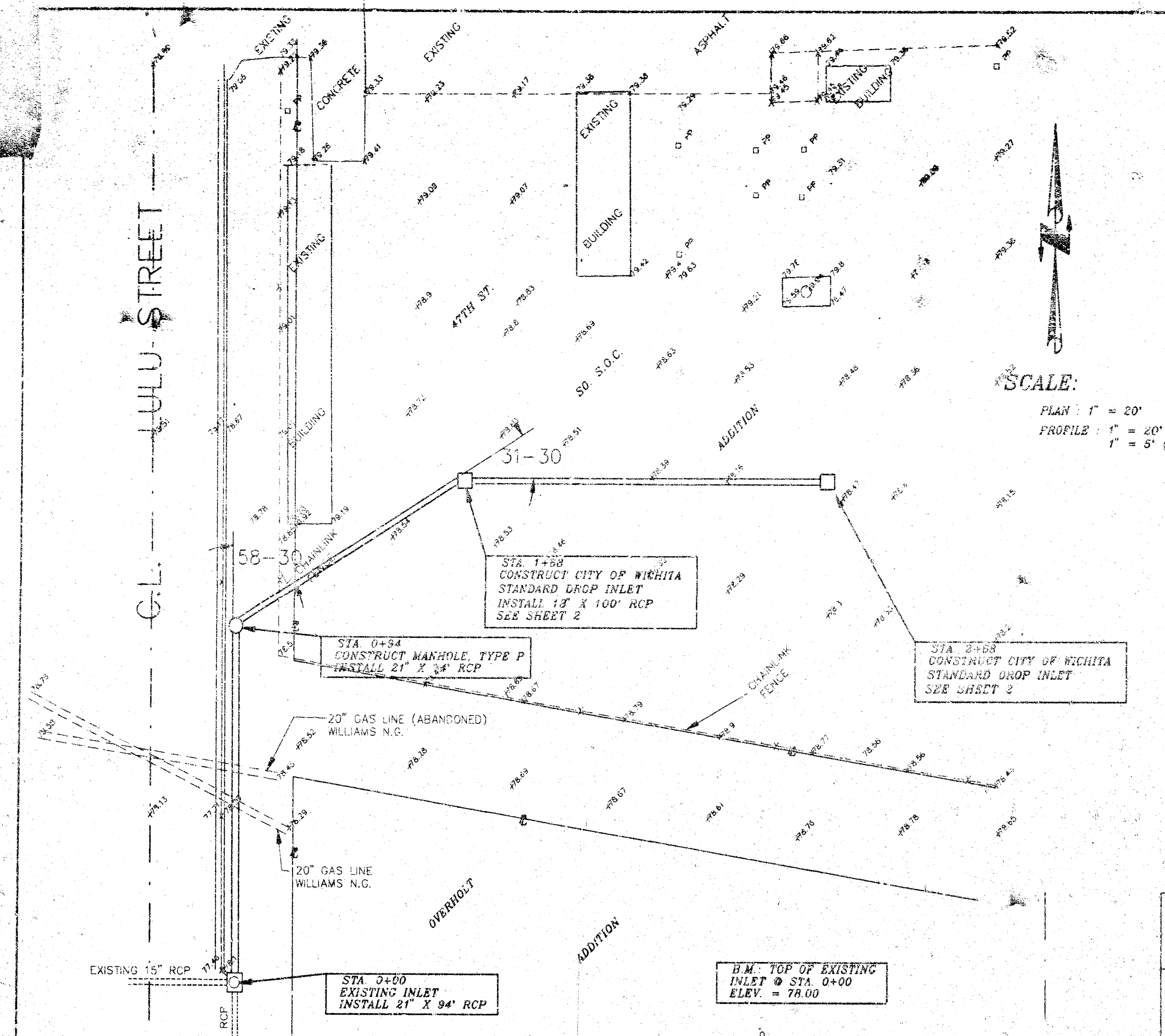
SCALE: 1" = 150'

NOTE TO CONTRACTOR

INSPECTION AND TESTING FOR THIS PROJECT IS TO BE PROVIDED BY A LICENSED CONSULTING ENGINEERING FIRM UNDER CONTRACT WITH THE OWNER. HOWEVER, THIS INSPECTION TO BE IN ACCORDANCE WITH THE CITY OF WICHITA TRAFFIC ENGINEERING PRACTICES AND PERFORMED BY A LICENSED PROFESSIONAL ENGINEER. NO WORK SHALL BE PERFORMED IN DESIGNATED EASEMENTS OR PUBLIC RIGHT-OF-WAY BY THE CONTRACTOR WITHOUT SUCH INSPECTION FOR SHALL ANY WORK BE COMMENCED IN DESIGNATED EASEMENTS OR PUBLIC RIGHT OF WAY WITHOUT WRITTEN AUTHORIZATION BY THE CITY ENGINEER.

APPROVED AS NOTED
 BY CITY ENGINEER OF WICHITA

Sanitary Sewers _____
 Storm Sewers UBH 6/10/193
 Driveway Approaches _____
 Water Mains _____
 Paving _____

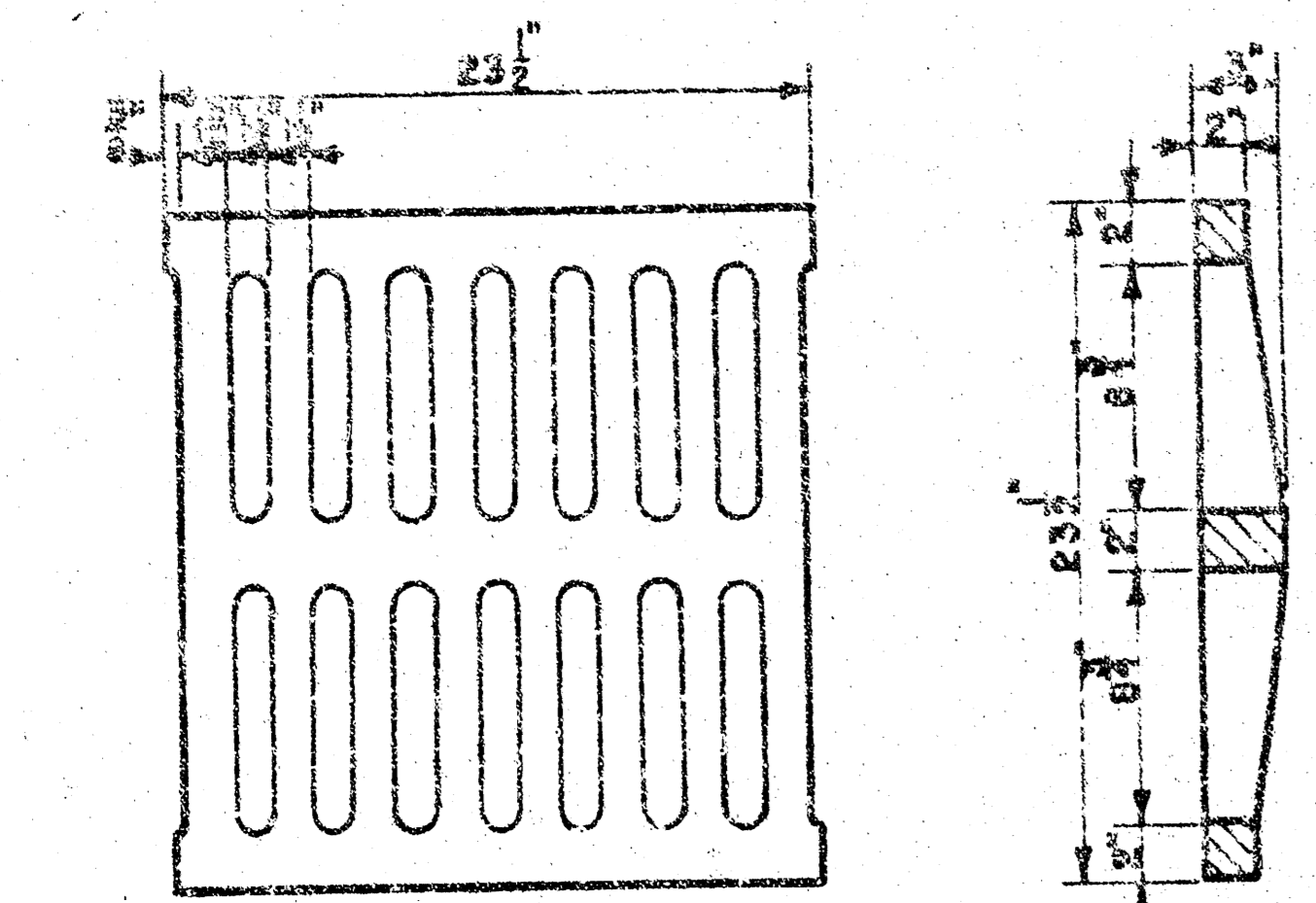
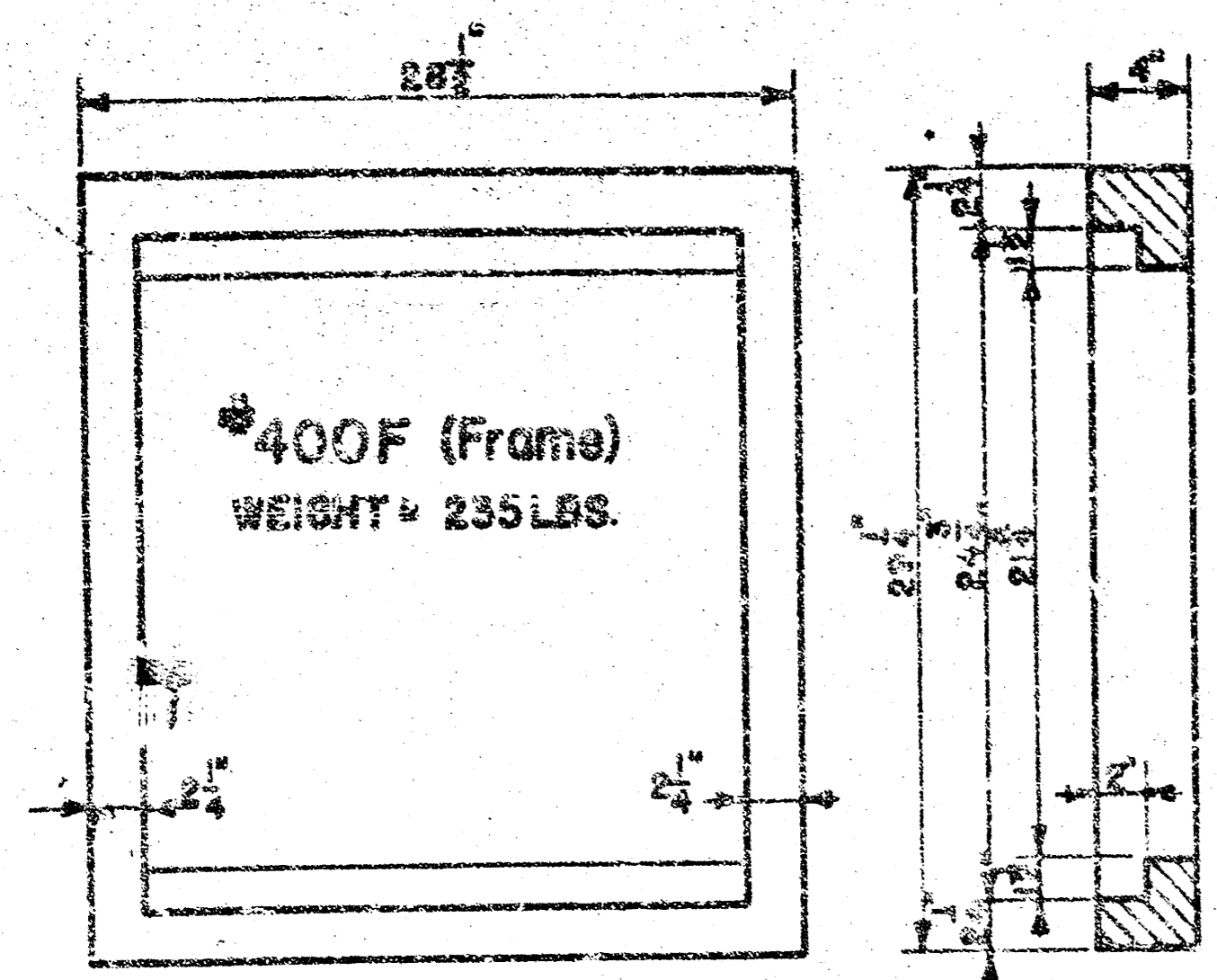


STORM SEWER IMPROVEMENTS TO SERVE 47TH ST. SO. S.O.C. ADDITION WICHITA, KANSAS

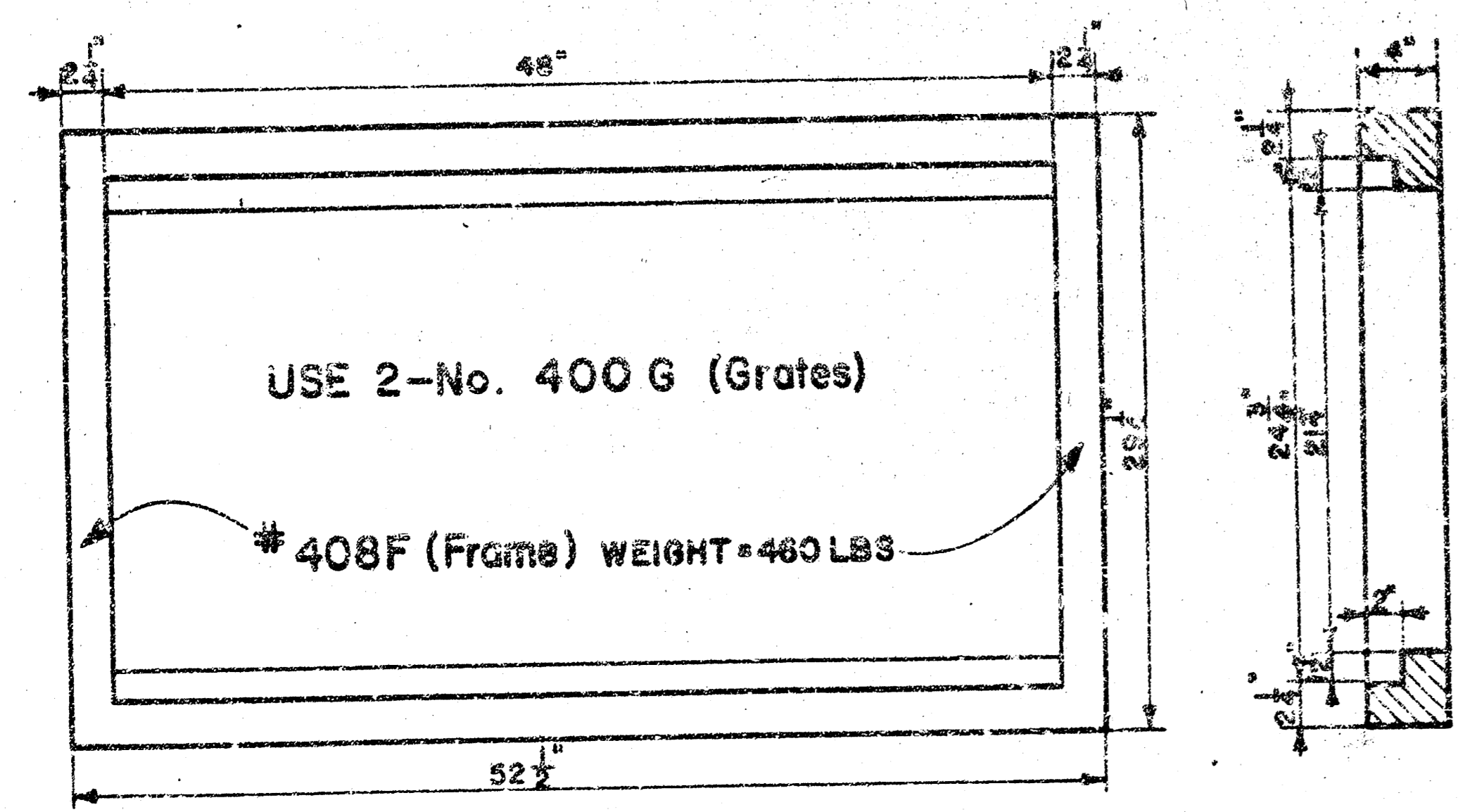
SCALE: As Shown	APPROVED:	DRAWN BY:
DATE:	CHECKED:	
PRIVATE PROJECT NO. SBPPPS(607861)	NE PROJECT NO. 93-15	SHEET NO. 1 OF 2

MUNICIPAL ENGINEERS
 254-LAURA, SUITE 201
 WICHITA, KANSAS 67211
 316-268-3642

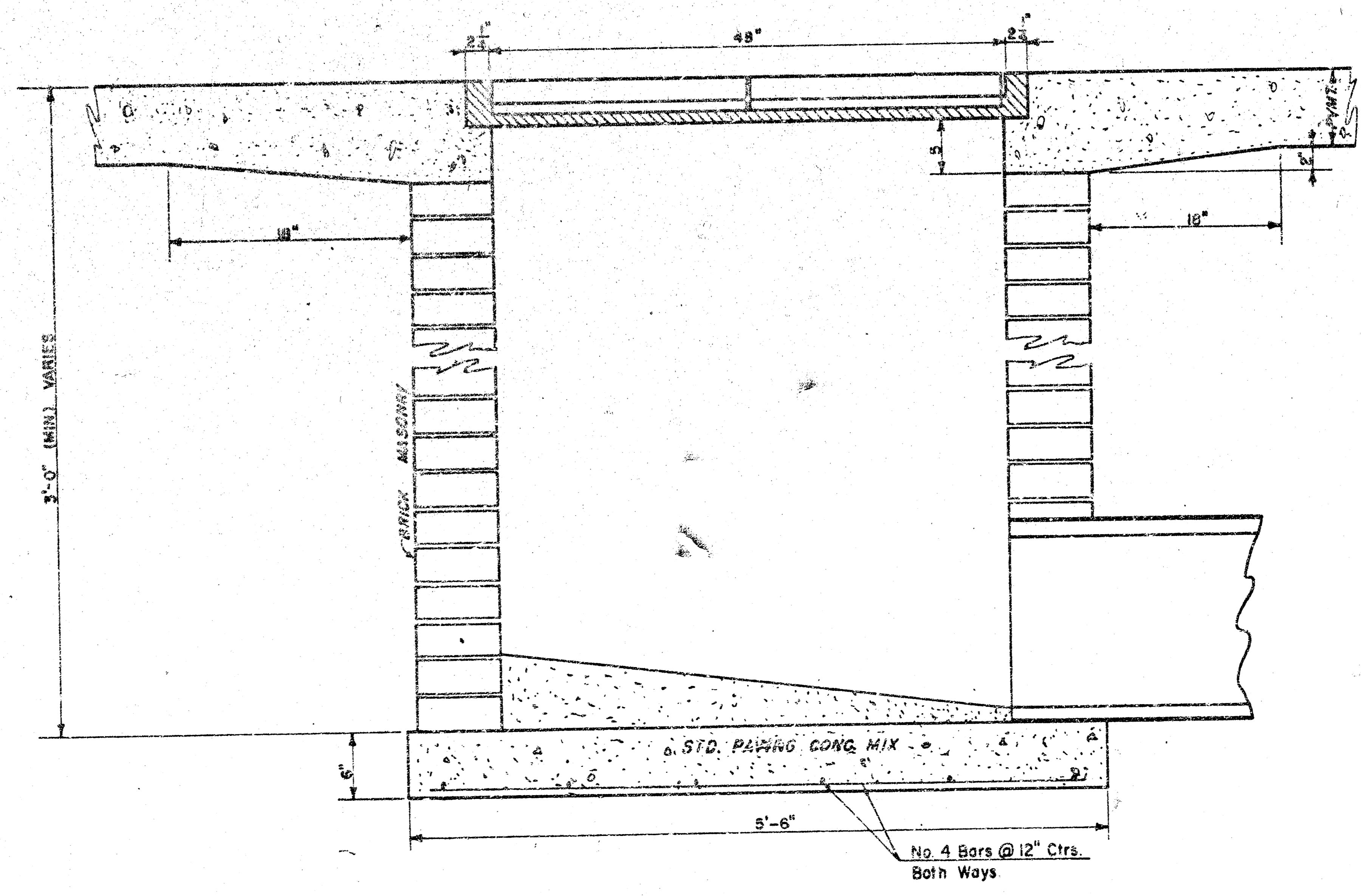
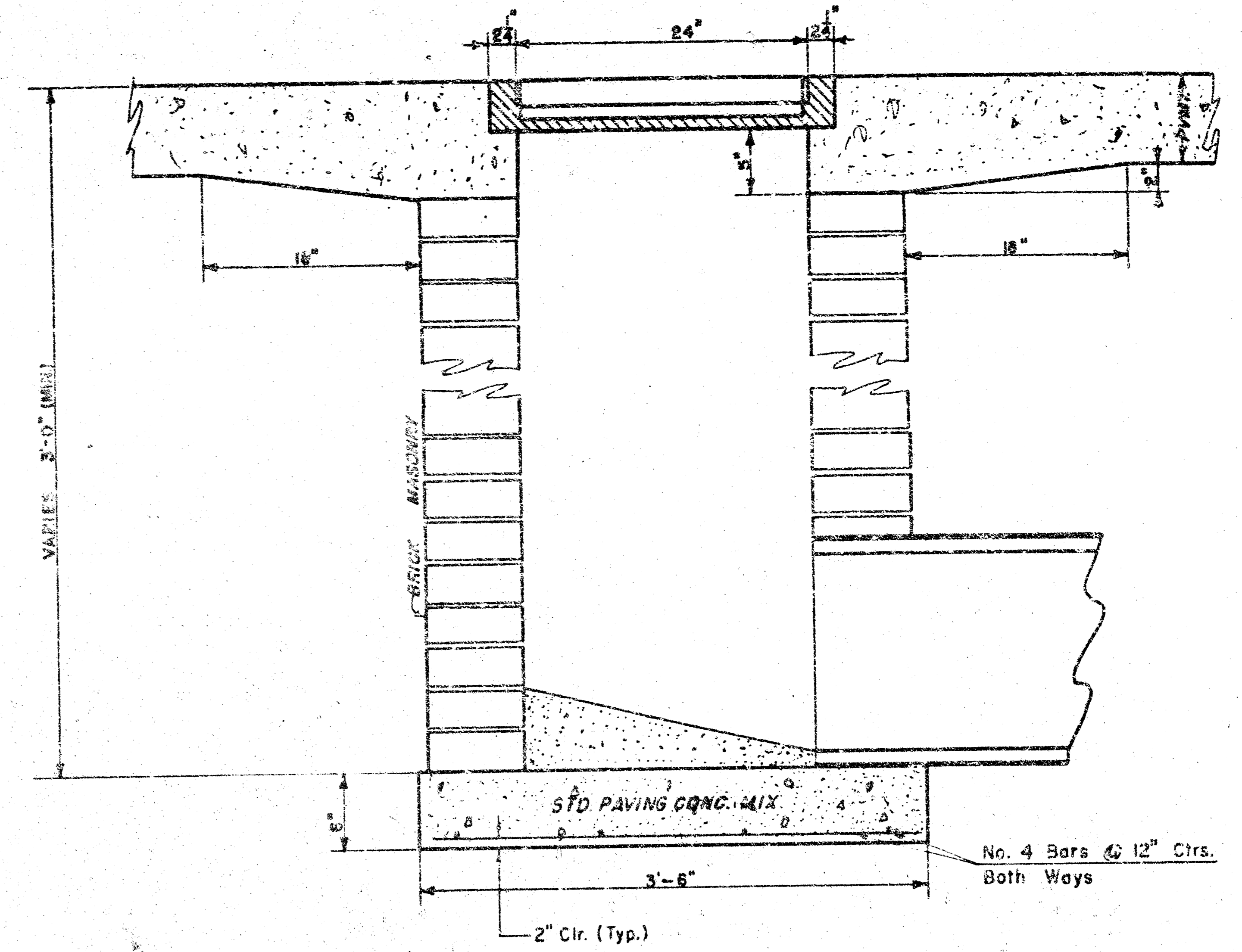
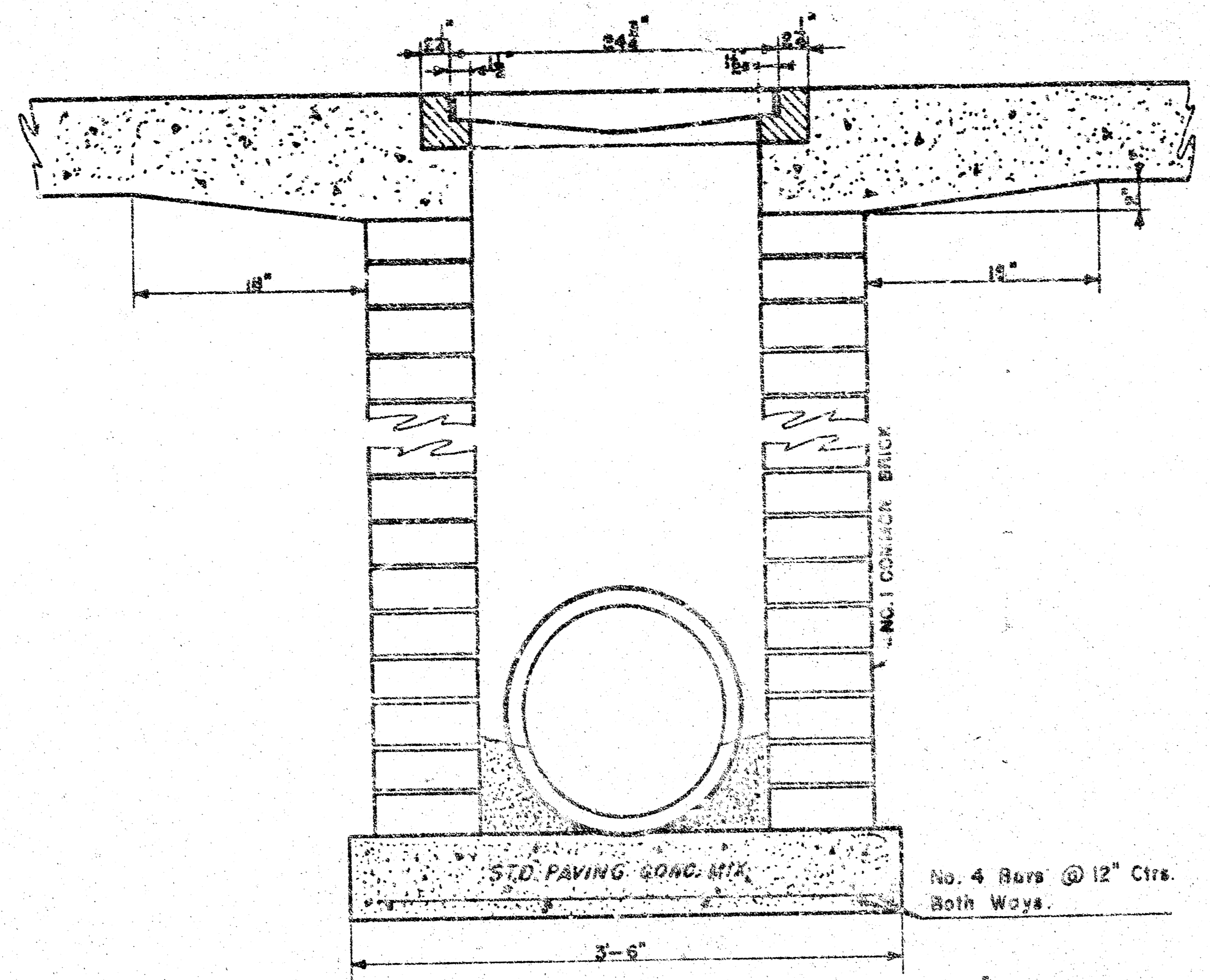
NOTE: Grates shall be imprinted on the top surface with "CITY OF WICHITA" using letters at least 1" in height. Other marking methods may be used only if approved by the engineer.



24"x24" Frame & Grate Detail



Double 24"x24" Frame Detail



SHEET 2 OF 2
DROP INLET DETAILS

M.E. Lindebak, City Engineer
City of Wichita, Kansas
Project: STORM SEWER IMPROVEMENTS TO SERVE 41TH ST. SO. S.C. ADDITION
Project No. 385PPS (697861)
Date: 6-9-93
Scale: 1-1/2" = 1'-0"