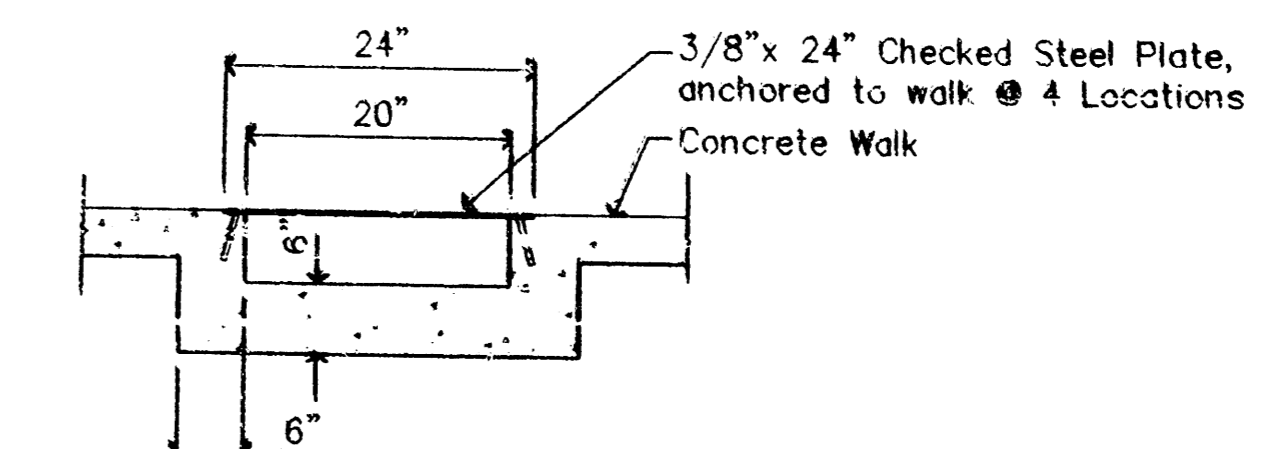
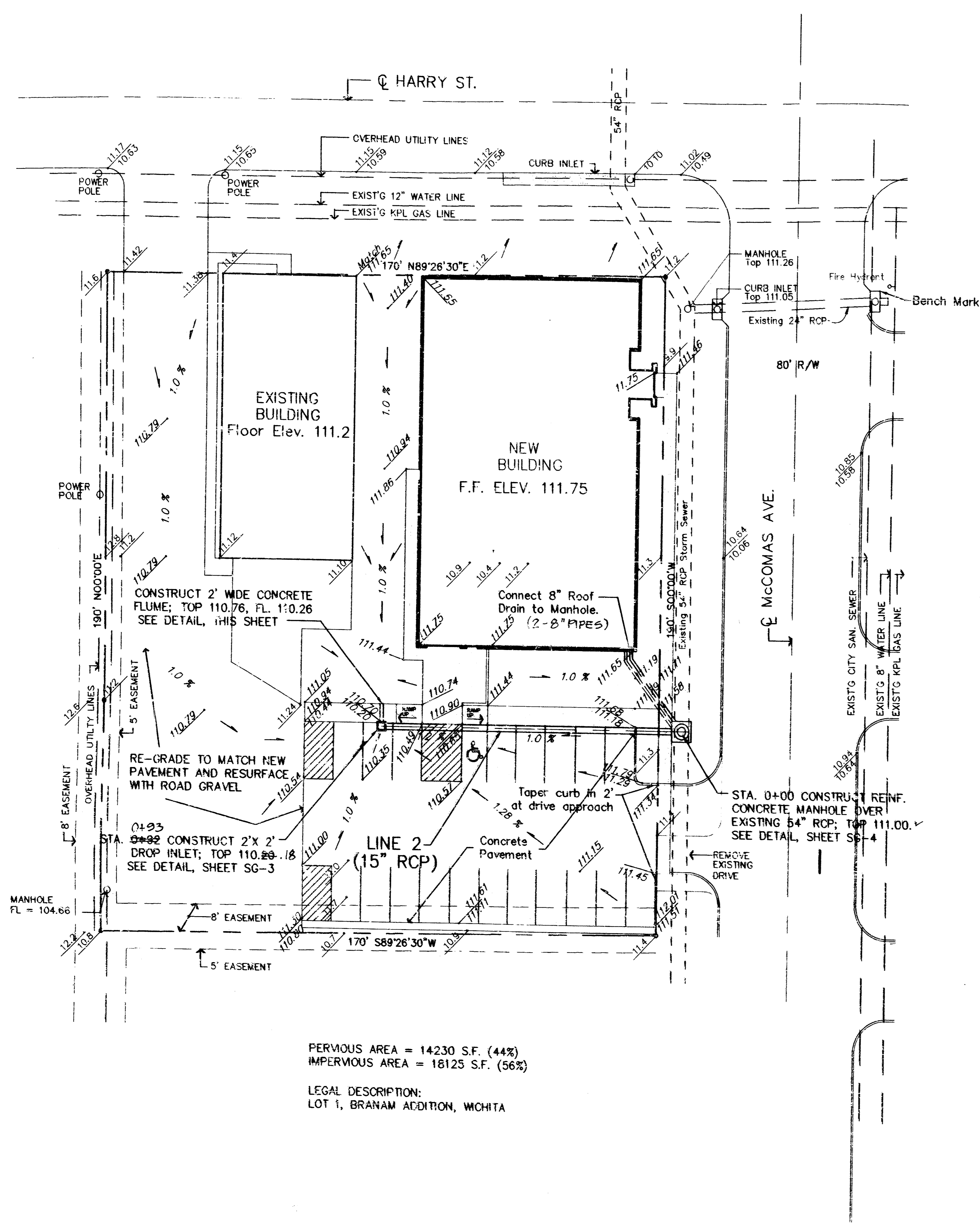


DWG. NAME: srb\kren\pshsg1; DATE: 06/22/93



NOTE: See Approval and Construction Notes Sheet SG-1

LEGEND

- Existing Top of Curb
- Existing Flowline
- Proposed Top of Curb
- Proposed Flowline
- Existing Spot Elevation
- Proposed Spot Elevation
- Flow Direction and Slope

BOOKED
D-101
NLS

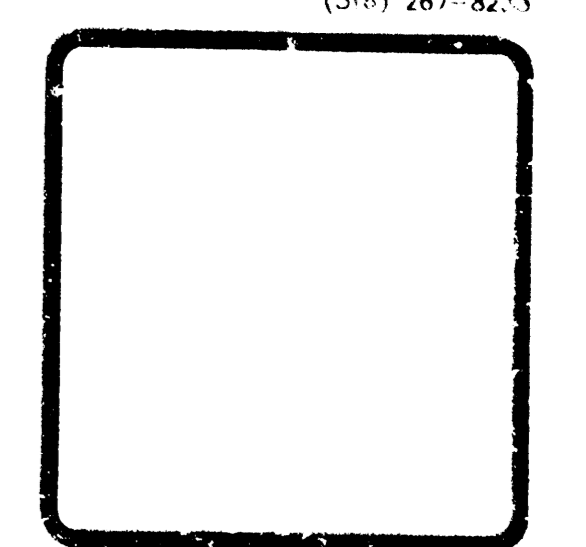
SITE GRADING AND STORM SEWER PLAN
See SG-3 for Storm Sewer Profiles
scale: 1" = 20'

BENCH MARK
* on NE corner of curb inlet
• : : 0+00 Line 1; elev. 111.06

program # 6-1-93
City review 6-21-93
Bid Set 6-24-93
revisions
date drawn 6-19-93

JK
JEFF KREHBIEL
ASSOCIATES, INC.
architecture - planning

1300 east main, wichita, kansas 67211
(316) 267-8211



A NEW CORPORATE OFFICE FOR
P. B. HOIDALE CO.
WEST HARRY & MCCOMAS AVENUE
WICHITA, KANSAS

sheet title
site grading and storm sewer plan (West Site)

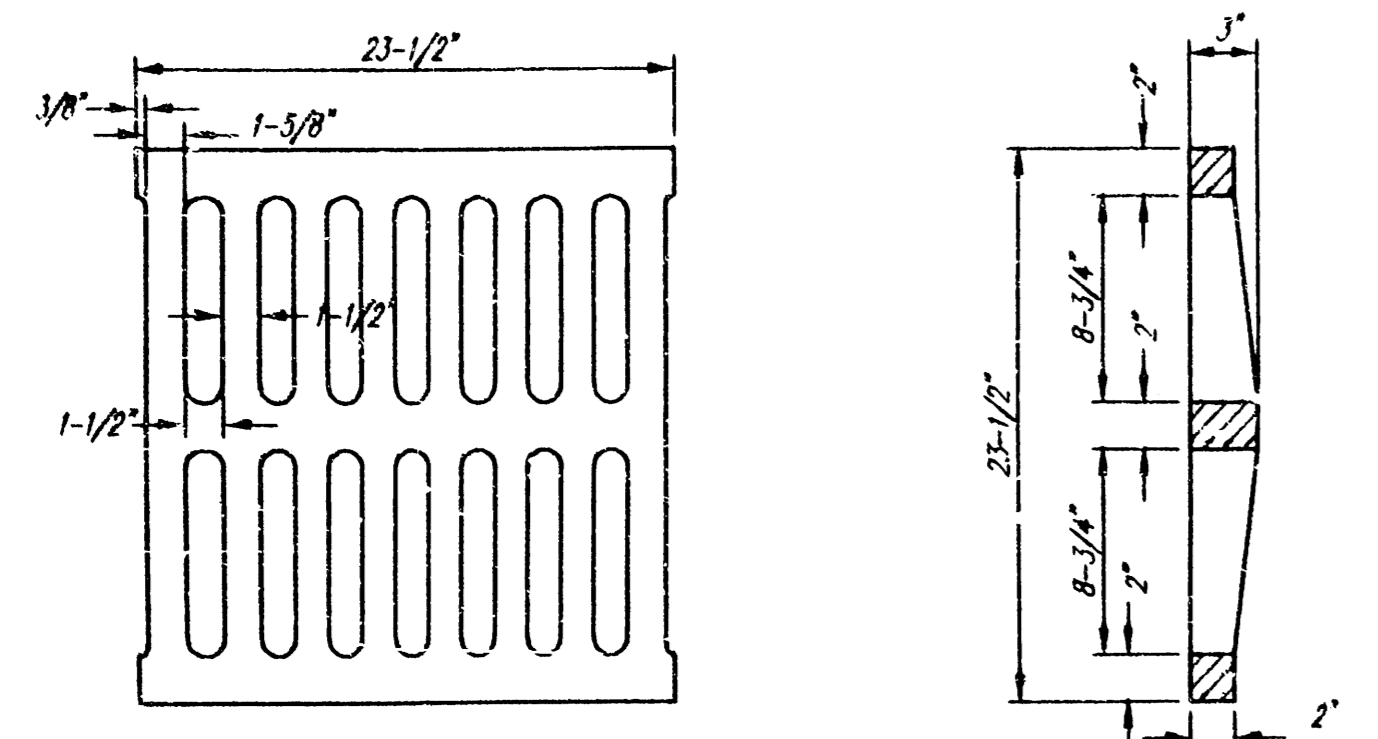
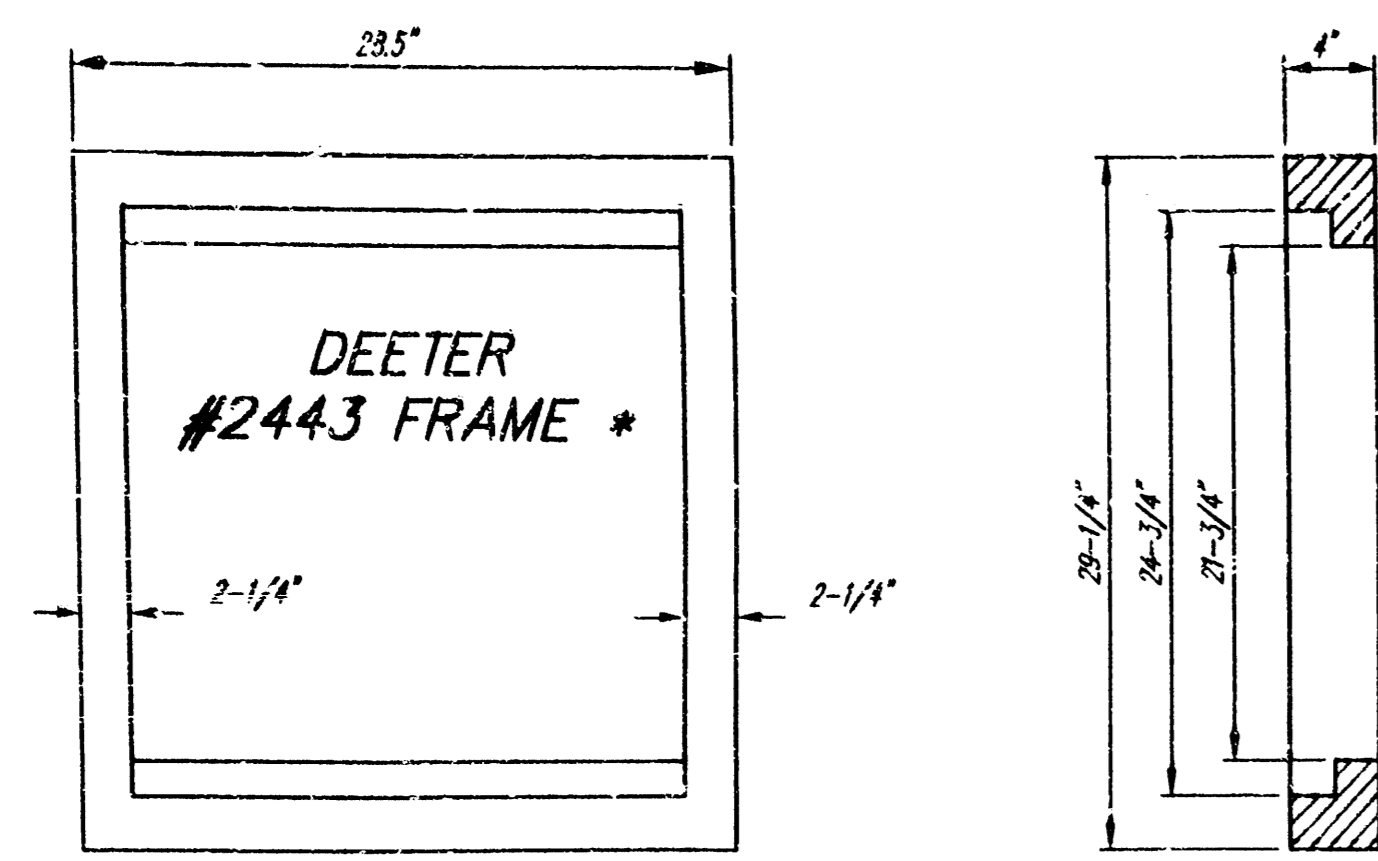
REVISED AS BUILT 6-2-94

SRB 841 SOUTH HILLSIDE 316-672-7704
WICHITA, KANSAS 67211 FAX 316-672-7832

SAVOY, RUGGLES & BOHM, P.A.
ENGINEERING & SURVEYING

PROJECT NUMBER: 397 PPS (607861)

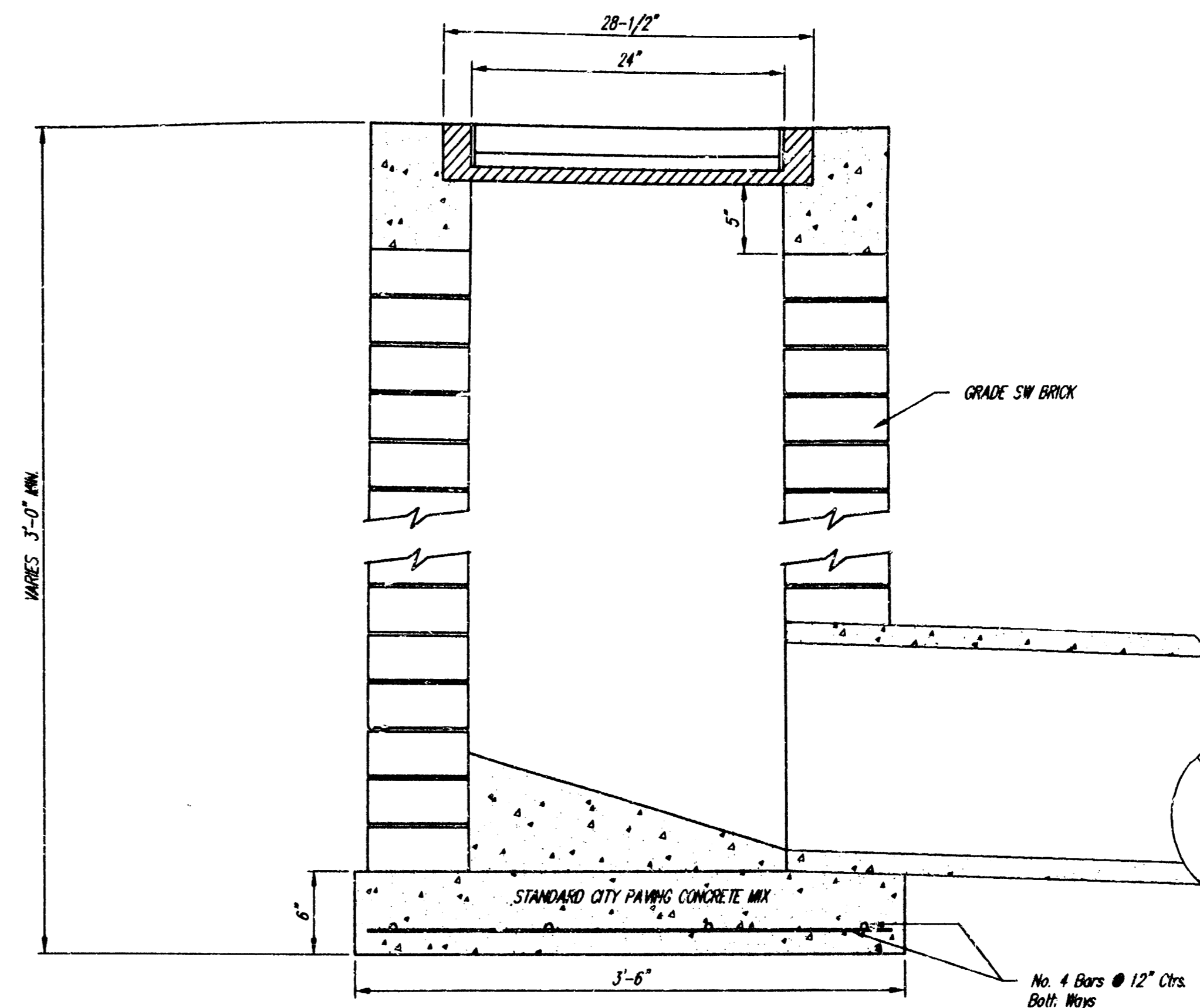
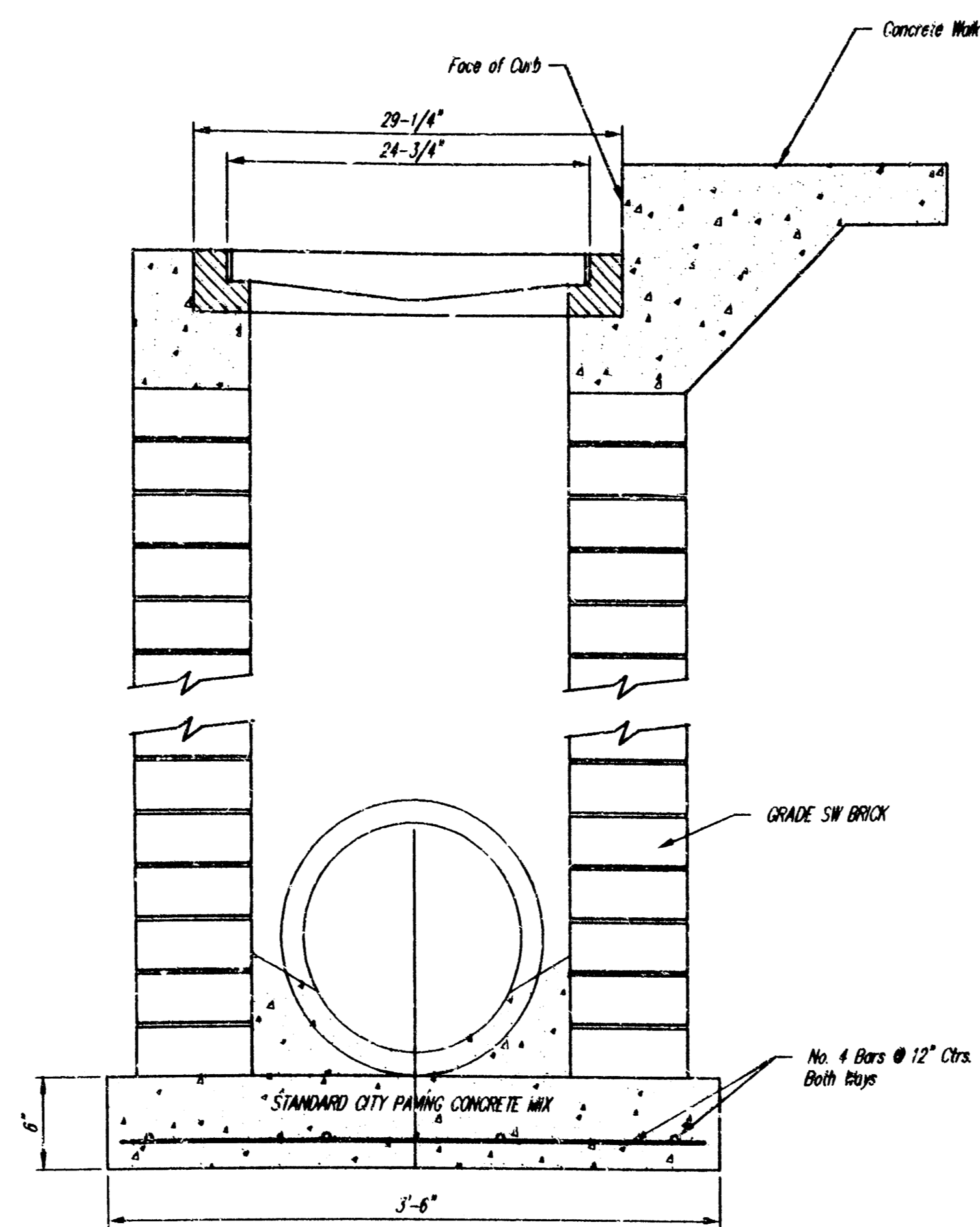
sheet
SG-2
of sheets



DEETER #2433 GRATE *

24" x 24" Frame and Grate Detail

* or Equal approved by Engineer.



progress print
5-1-92
city review
6-21-93
bid set
6-24-93

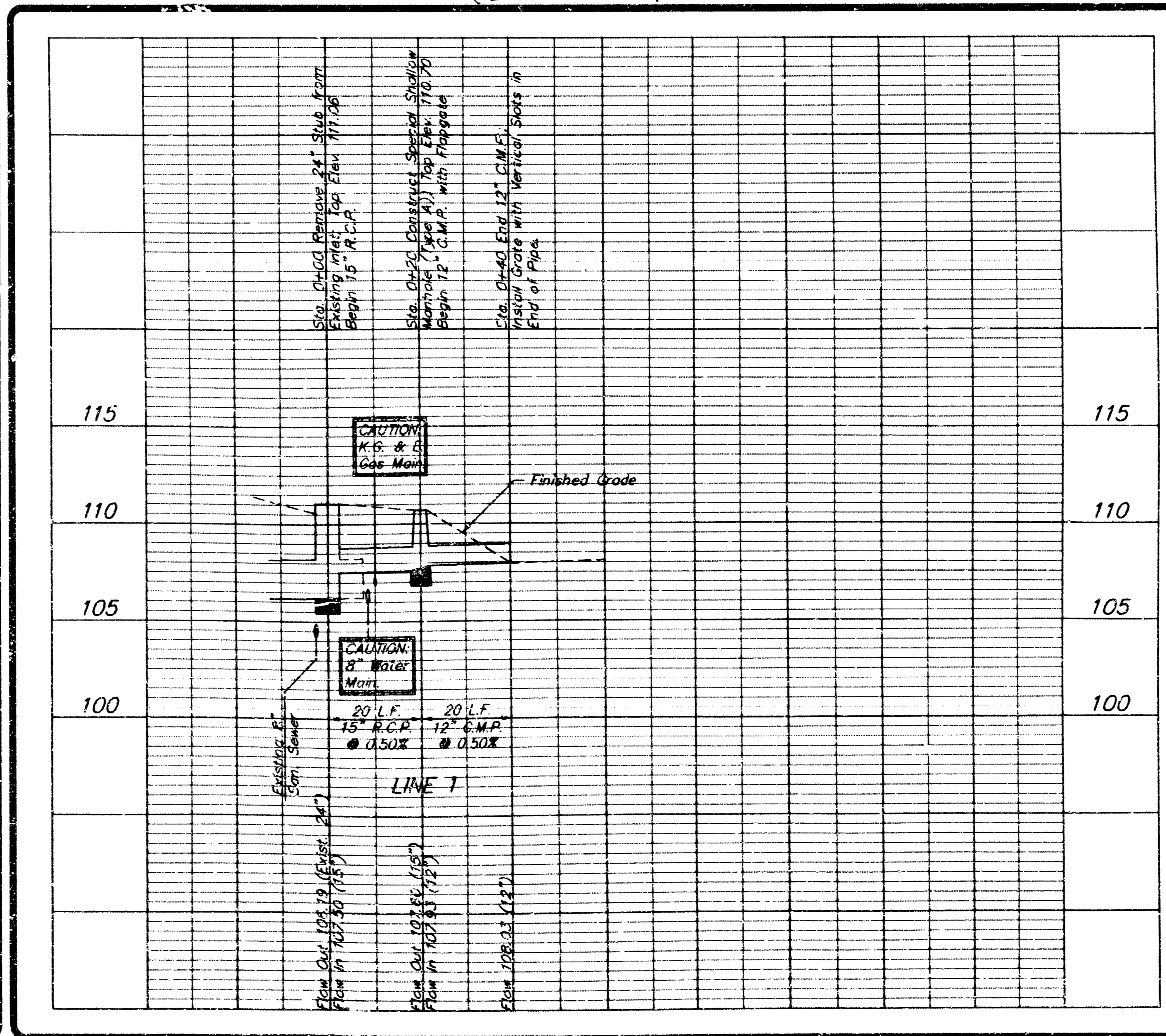
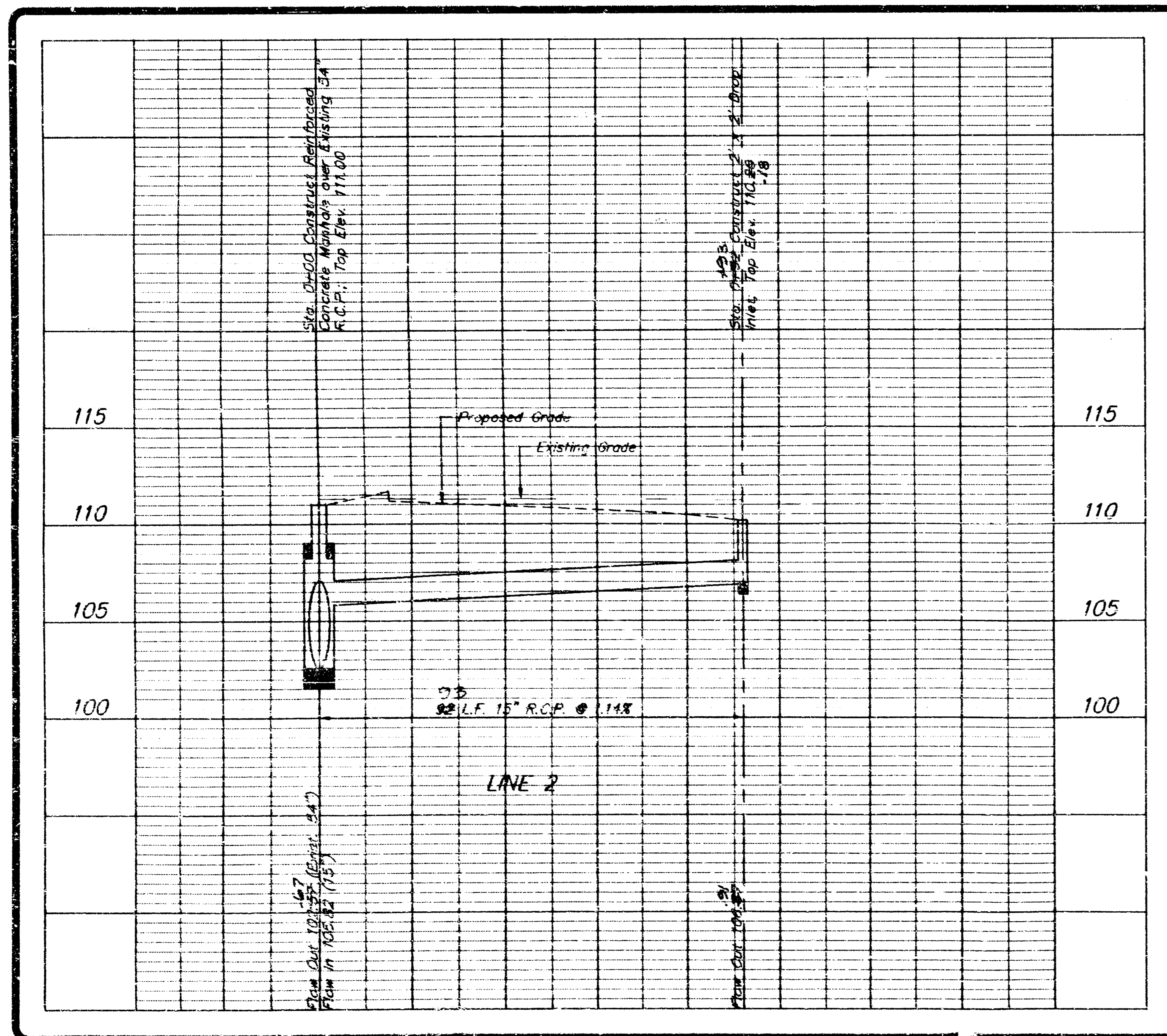
revisions

date drawn
6-19-93



1300 east lewis wichita, kansas 67211
316) 267-8233

(LINE 1 CONSTRUCTED PREVIOUSLY)



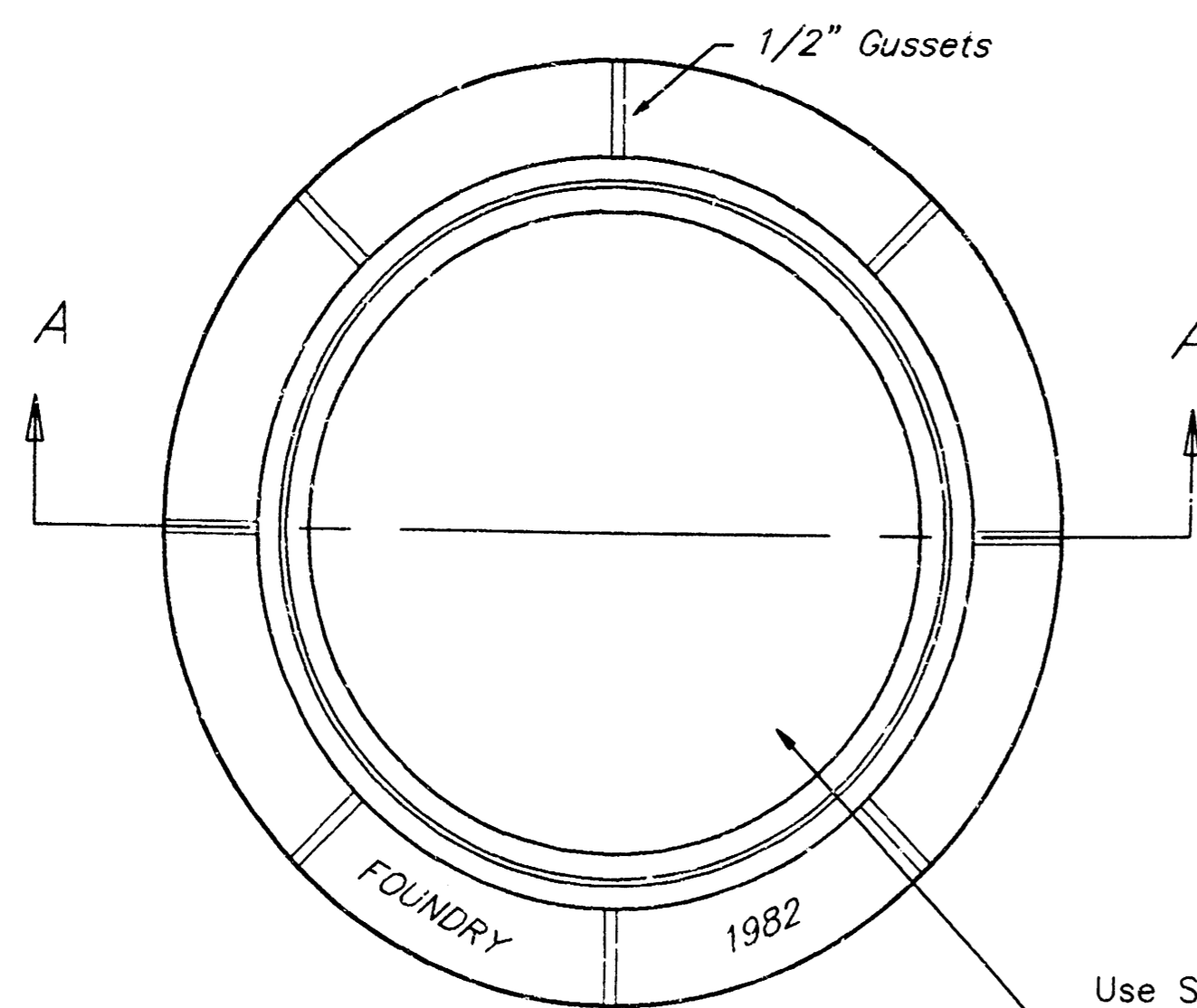
REVISED AS BUILT 6-2-94 (LINE 2 ONLY)

SRB 841 SOUTH HILLSIDE WICHITA, KANSAS 67211 316-652-7754 FAX 652-7932
SAVOY, RUGGLES & BOHM, P.A.
ENGINEERING & SURVEYING

sheet
SG-3
of sheets

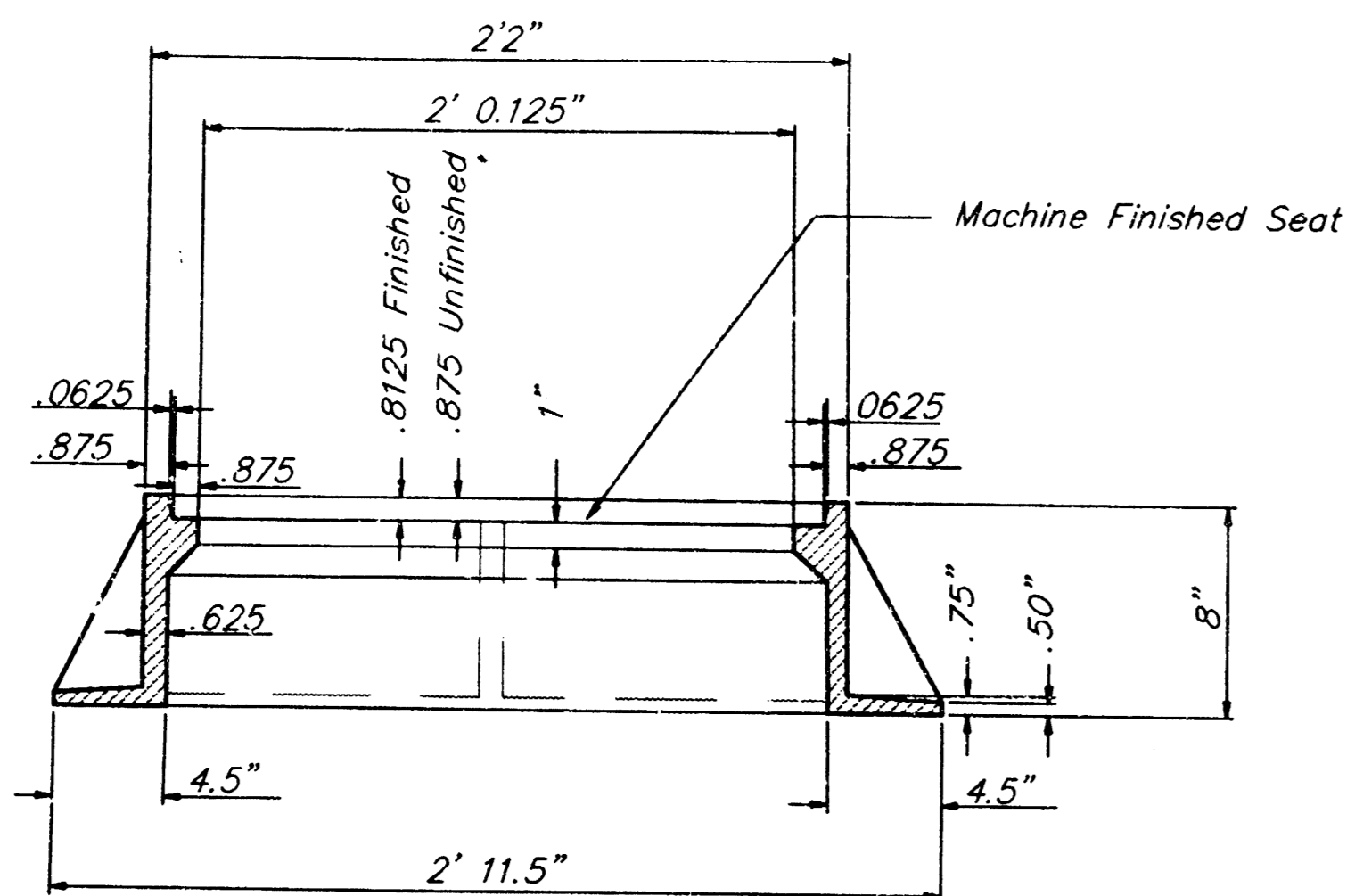
A NEW CORPORATE OFFICE FOR
P. B. HOIDALE CO.
WEST HARRY & MCCORMAS AVENUE
WICHITA, KANSAS

sheet title
Storm Sewer Profile
and Drop Inlet
Details



Use Standard City Of Wichita Cover (Weight: 180 lbs)

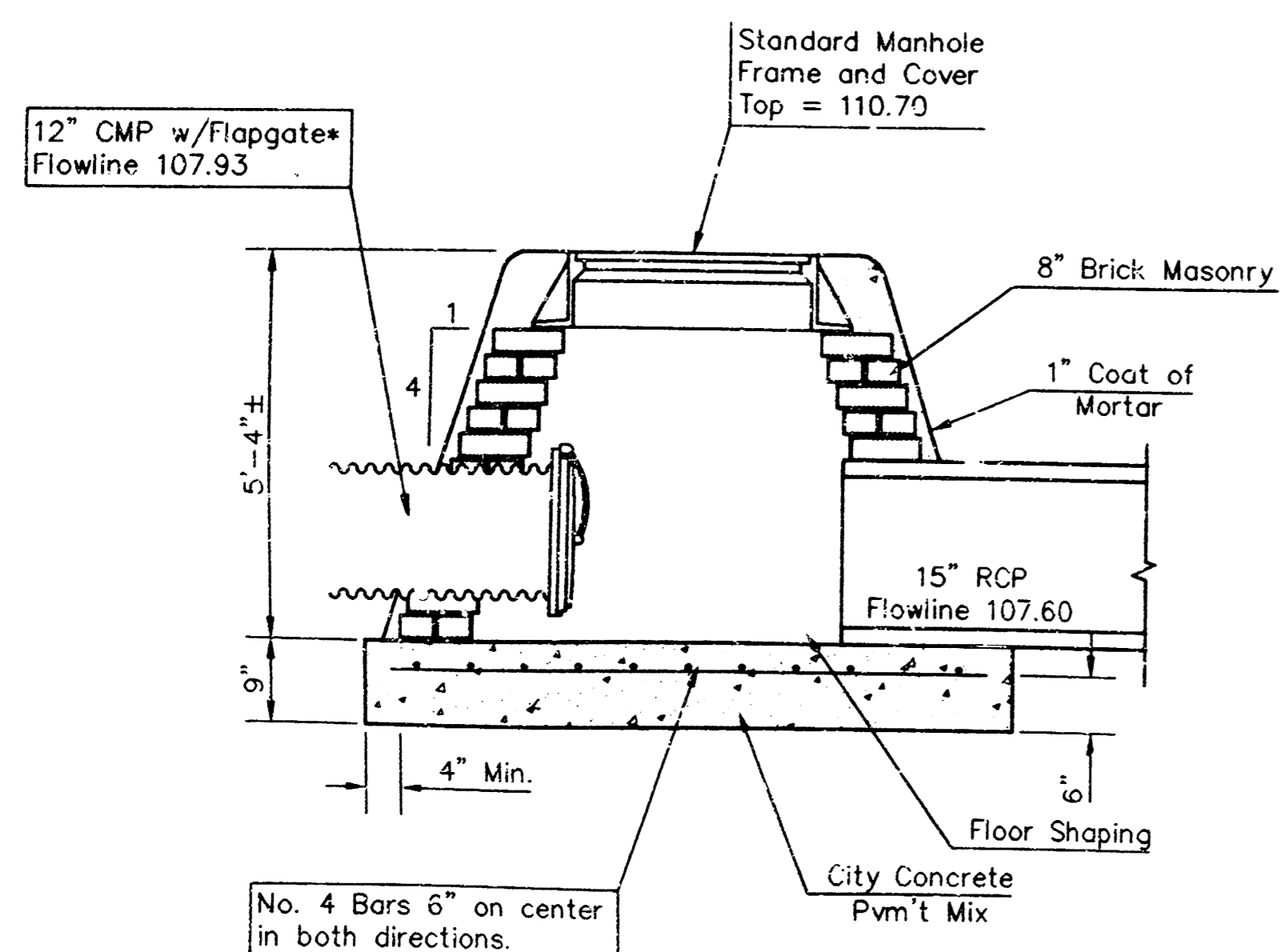
TOP VIEW



SECTION A-A

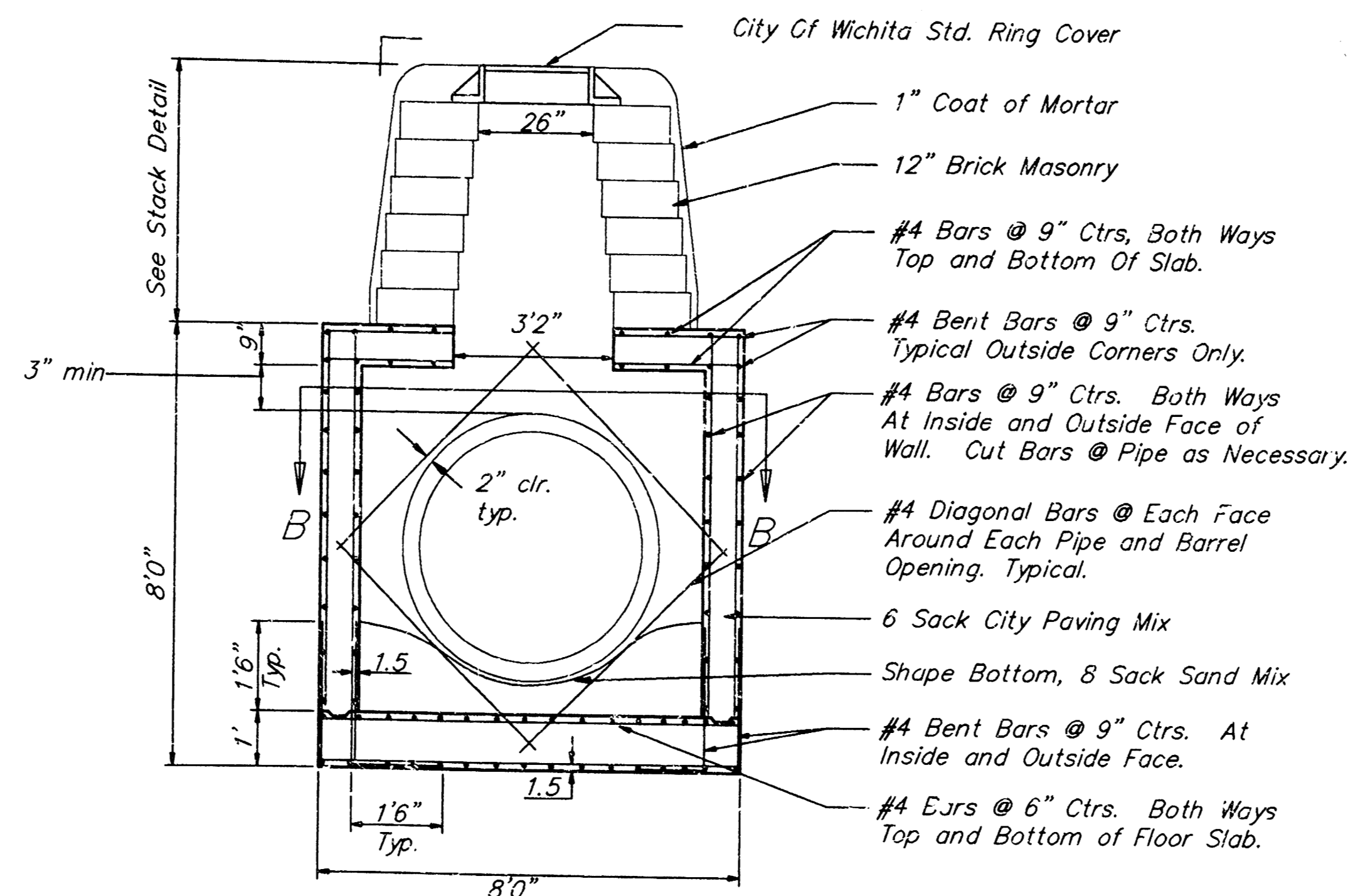
MANHOLE FRAME

Weight: 240 Lbs.



SPECIAL SHALLOW TYPE "A" MANHOLE

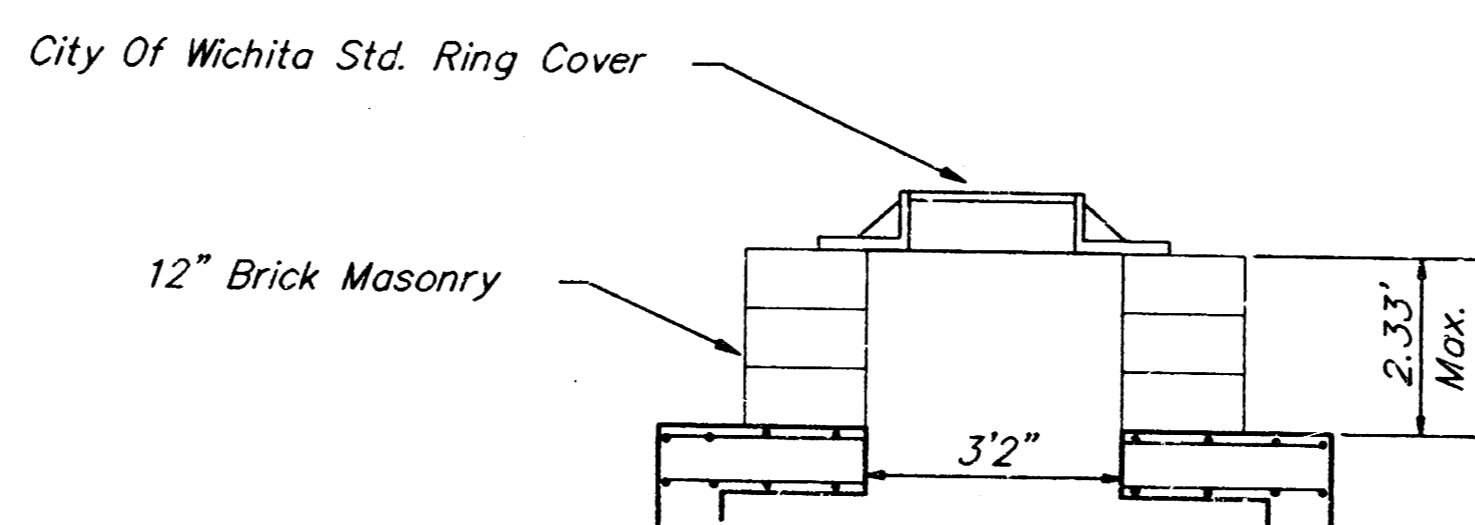
Neenah R-5050-CF12 or Equal Approved by Engineer



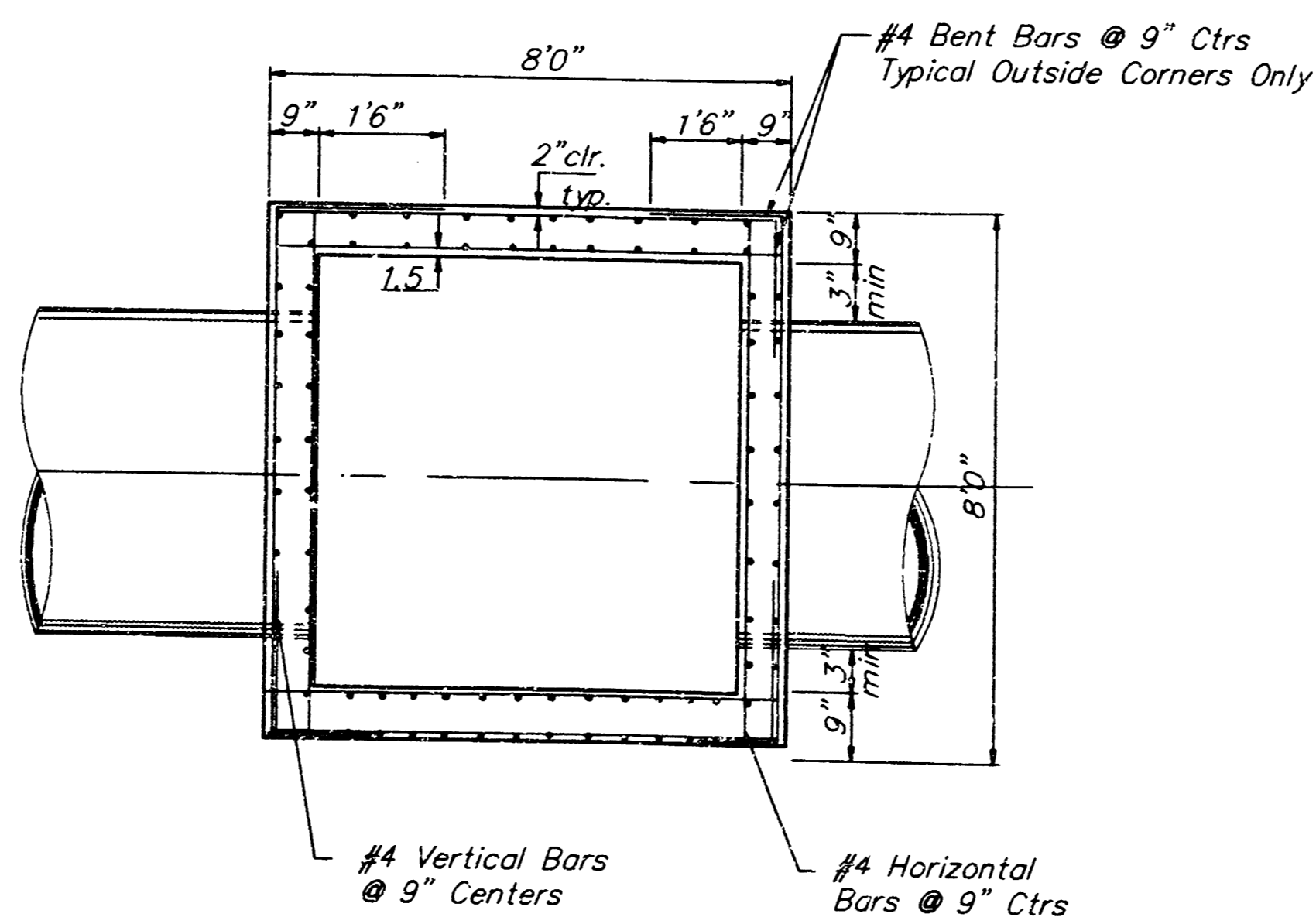
REINFORCED CONCRETE MANHOLE

STACK 2.33' TO 4'0"

(Use stack less than 2.33', shown below)



MANHOLE STACK LESS THAN 2.33'



NOTE:
Bend Bars Not More Than 8" to Clear Pipes, or Cut Bars 2" Clear of Pipe, as Necessary.

SECTION B-B

- GENERAL NOTES**
- Mortar used in masonry construction shall contain 8 sacks of cement per cubic yard. Concrete used in manhole bases shall conform to the requirements of concrete for concrete pavement construction as specified in the city standard paving specifications using city concrete cement mix without air entraining admixture. Mortar shall be placed around the manhole ring as shown on the drawings when manholes are constructed in unpaved areas. Type "A" shallow manholes can be used on sewers when the manhole is not located within public street pavement. Manholes constructed where pipe sizes are smaller than 24" shall have an inside diameter of 4". Manholes constructed where pipe sizes are 24" or larger shall have an inside diameter of 5". Completed manhole shall be without leaks and water tight.
 - Reinforcing steel shall be installed in the manhole bases and shall consist of no. 4 bars placed on 6" centers in both directions. The manhole base reinforcement shall be placed 6" above the bottom of the manhole base. All costs for furnishing and installing reinforcing steel shall be included in the unit price bid for the manhole.
 - The floors of all manholes shall be shaped with flow channels such that the manholes will be self cleaning and free of areas where solids could be deposited as sewage flows through the manhole from all inlet pipes to the outlet pipe. Flow channels shall be formed to match the bottom halves of the inflowing pipes and the outflowing pipe as shown by the drawings. Manhole floors shall have slopes of 3 inches per foot in the areas outside of the flow channels sloped toward the flow channels. Pipes (in) through manholes shall have the top half removed to neat lines for the full inside diameter of the manhole. Manhole floors shall then be shaped around the bottom half of the pipe which forms the flow channel.
 - Manhole cover castings and manhole frame castings shall conform to the requirements as indicated in the standard specifications and as shown in the standard detail drawings.
 - The ends of all pipes in manholes shall be cut off flush with the inside face of manhole wall.
 - All brick used in manhole construction shall meet Grade SW of ASTM C652 or C62-87.

SRB 841 SOUTH HILLSIDE WICHITA, KANSAS 67211 316-652-7754 FAX 652-7932

SAVOY, RUGGLES & BOHM, P. A.
ENGINEERING & SURVEYING

progress print
6-1-93
city review
6-21-93
bid set
6-24-93

revisions

date drawn
6-19-93

JK

JEFF KREHBIEL ASSOCIATES, dca
architecture - planning

1300 east lewis wichita, kansas 67211
(316) 267-8233

A NEW CORPORATE OFFICE FOR
P. B. HOIDALE CO.
WEST HARRY & MCCORMAN AVENUE
WICHITA, KANSAS

sheet title
Manhole Details

sheet
SG-4
of sheets

DATE: 06/24/93