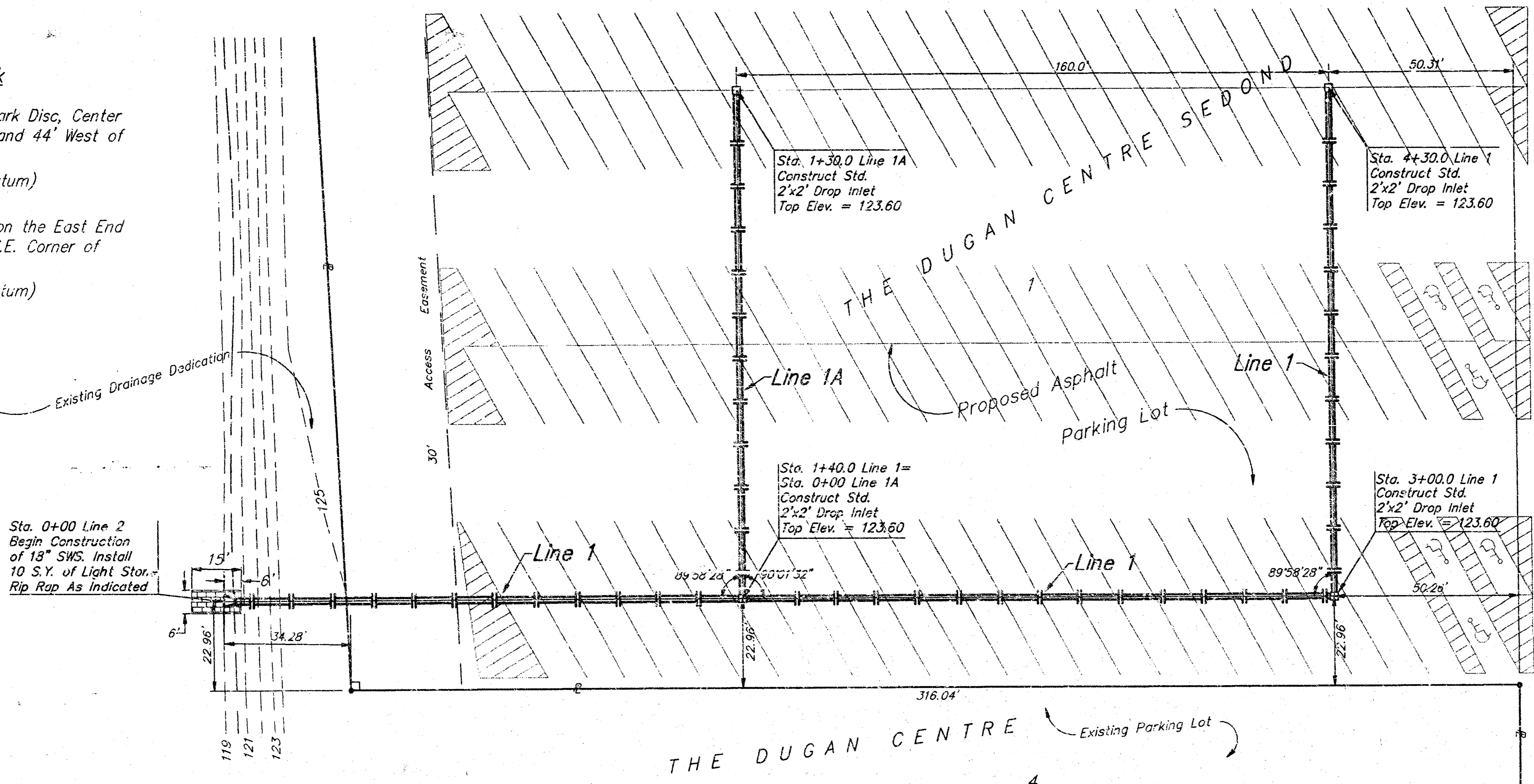


Benchmark

City of Wichita Benchmark Disc, Center of U.S. 54 Pavements and 44' West of Centerline of Dugan.
Elev. = 121.65 (City Datum)

"□" Cut Top of Curb on the East End of the Return at the S.E. Corner of Dugan and Taft.
Elev. = 118.61 (City Datum)



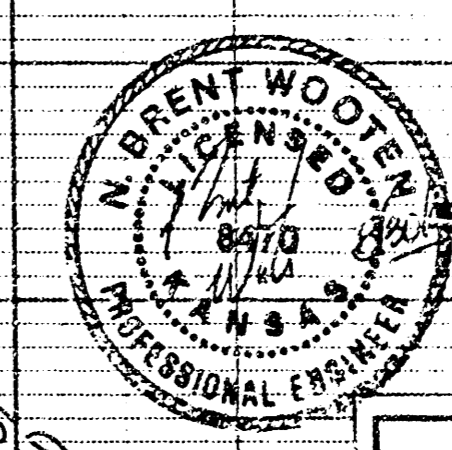
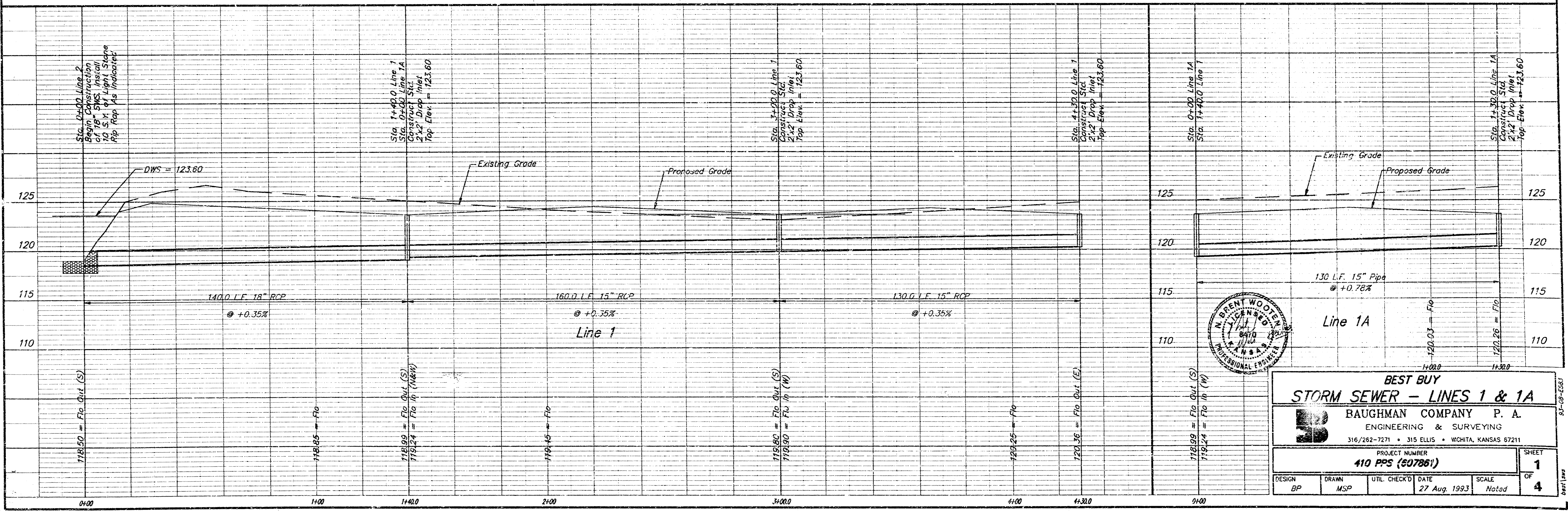
Scale: 1" = 20' Horizontal
1" = 5' Vertical
• = Iron

PROPOSED
BEST BUY
BUILDING

APPROVED AS NOTED
BY CITY ENGINEER OF WICHITA

Sanitary Sewers _____
Storm Sewers 8/30/93 VRH
Driveway Approaches _____
Water Mains _____
Paving _____

NOTE TO CONTRACTORS
Inspection and testing for this project is to be provided by a Licensed Consulting Engineering Firm under contract with the Owner/Developer. Said inspection to be in accordance with the City of Wichita standard construction engineering practices and certified by a Licensed Professional Engineer. No work shall be performed in dedicated easements or public right-of-way by the Contractor without such inspection nor shall any work be commenced without written authorization by the City Engineer.



BEST BUY
STORM SEWER - LINES 1 & 1A

BAUGHMAN COMPANY P. A.
ENGINEERING & SURVEYING
316/282-7271 • 315 ELLIS • WICHITA, KANSAS 67211

PROJECT NUMBER
410 PPS (507861)

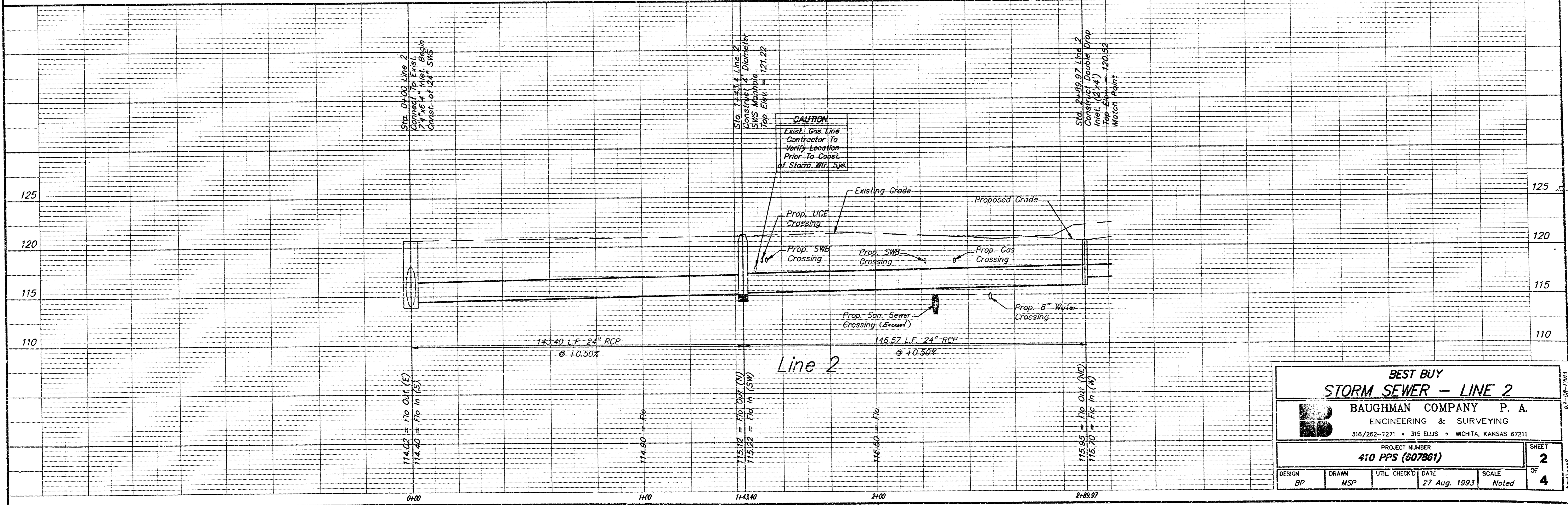
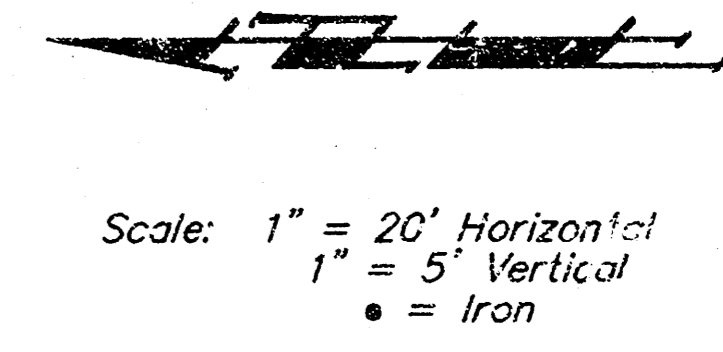
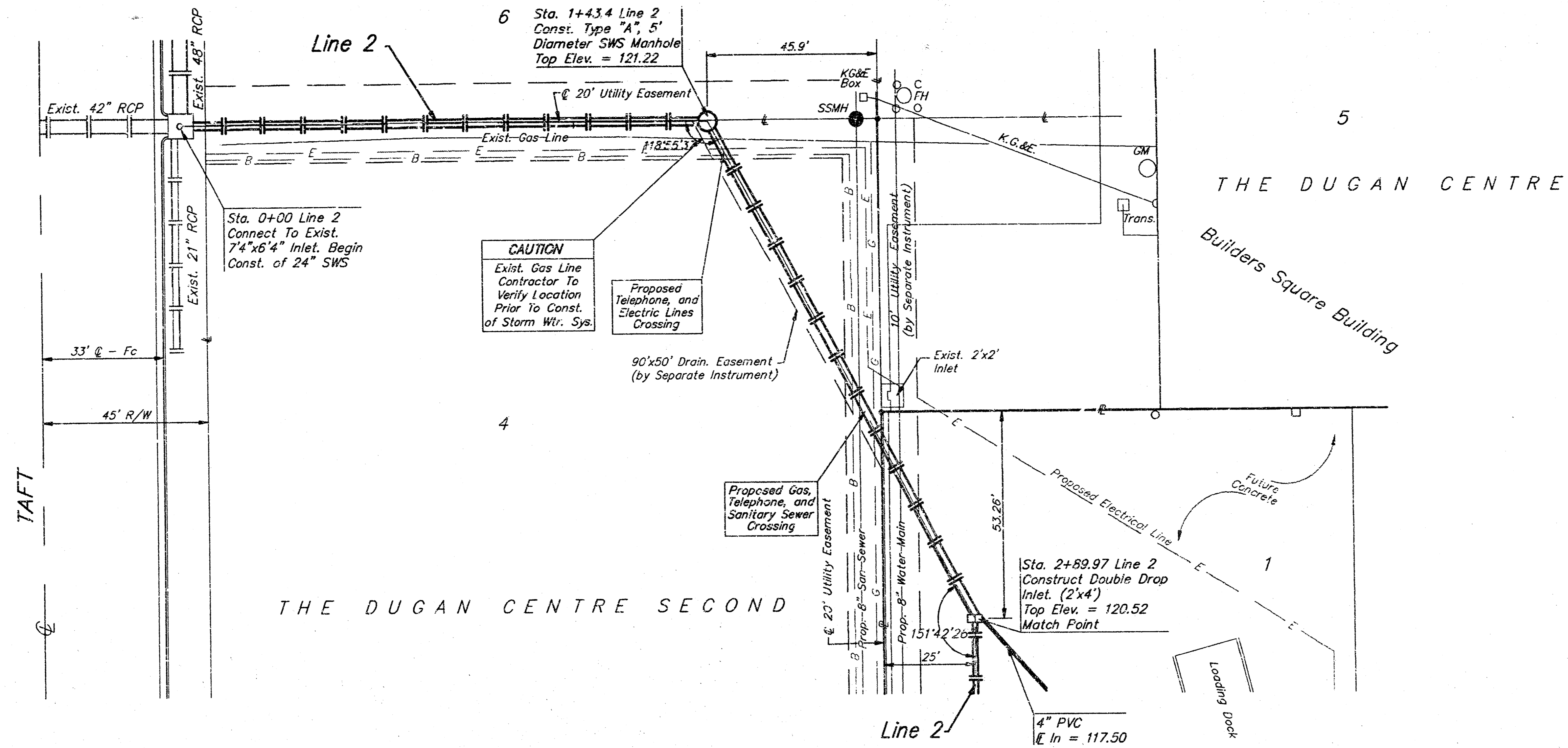
DESIGN BP	DRAWN MSP	UTIL. CHECKED	DATE 27 Aug. 1993	SCALE Noted	SHEET 1 OF 4
--------------	--------------	---------------	----------------------	----------------	-----------------

93-09-ES61

Benchmark

City of Wichita Benchmark Disc, Center of U.S. 54 Pavements and 44' West of Centerline of Dugan.
Elev. = 121.65 (City Datum)

"□" Cut Top of Curb on the East End of the Return at the S.E. Corner of Dugan and Taft.
Elev. = 118.61 (City Datum)

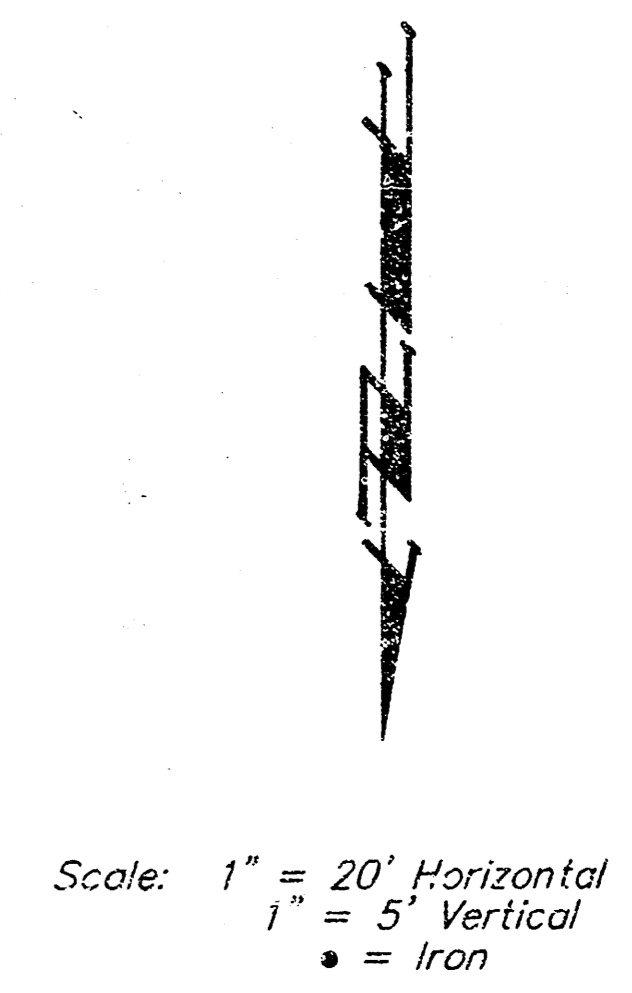
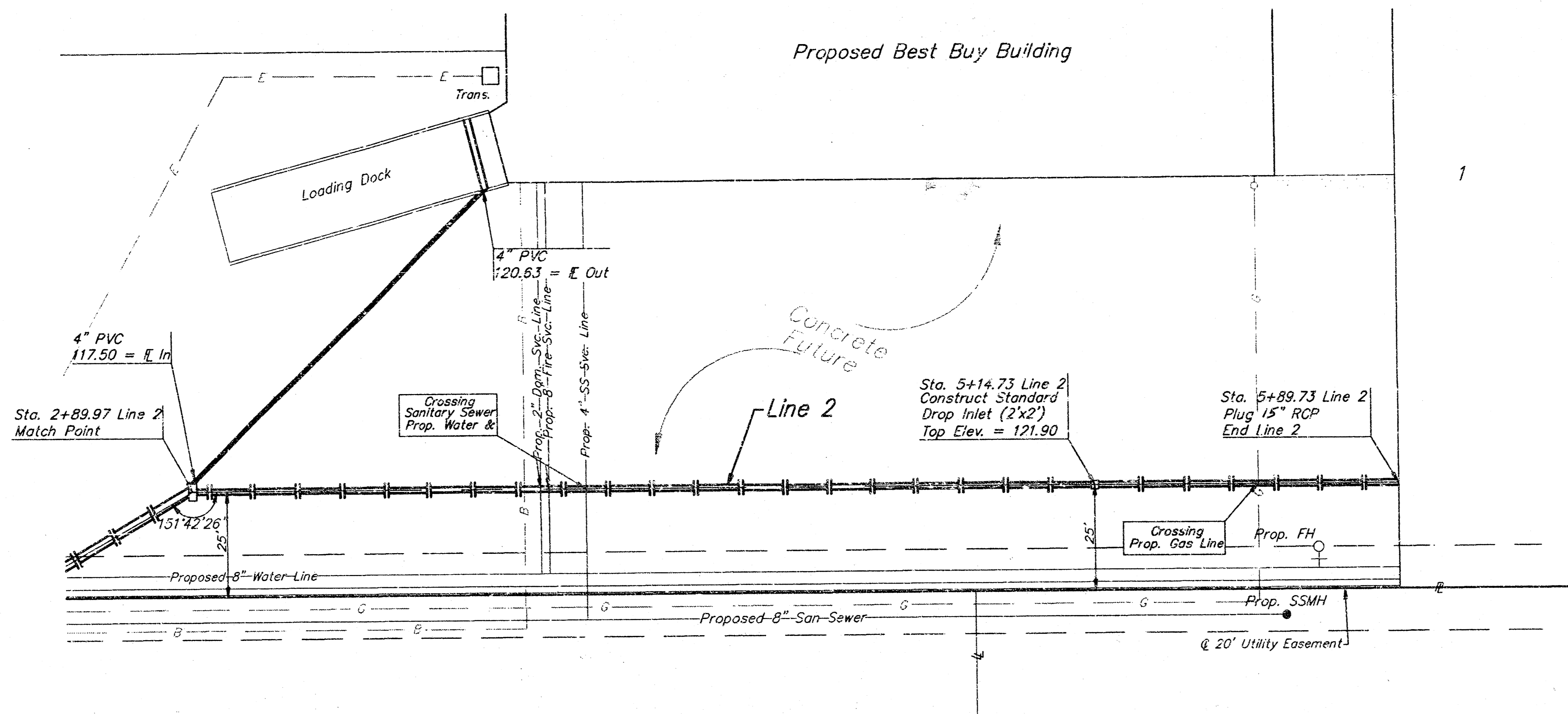


BEST BUY			
STORM SEWER - LINE 2			
BAUGHMAN COMPANY P. A.			
ENGINEERING & SURVEYING			
316/262-7271 • 315 ELLIS • WICHITA, KANSAS 67211			
PROJECT NUMBER			SHEET
410 PPS (807861)			2
DESIGN		SCALE	
BP	HSP	27 Aug. 1993	Noted
DRAWN		DATE	
HSP		27 Aug. 1993	
UTIL. CHECK'D		DATE	
HSP		27 Aug. 1993	

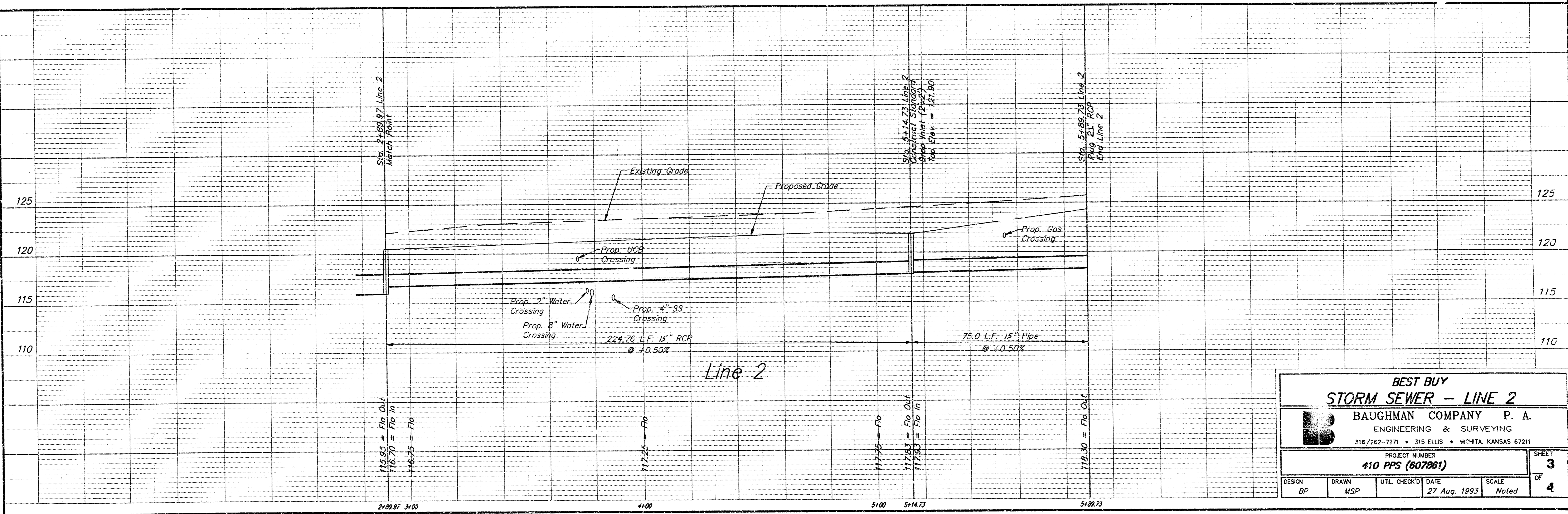
Benchmark

City of Wichita Benchmark Disc, Center of U.S. 54 Pavements and 44' West of Centerline of Dugan.
Elev. = 121.65 (City Datum)

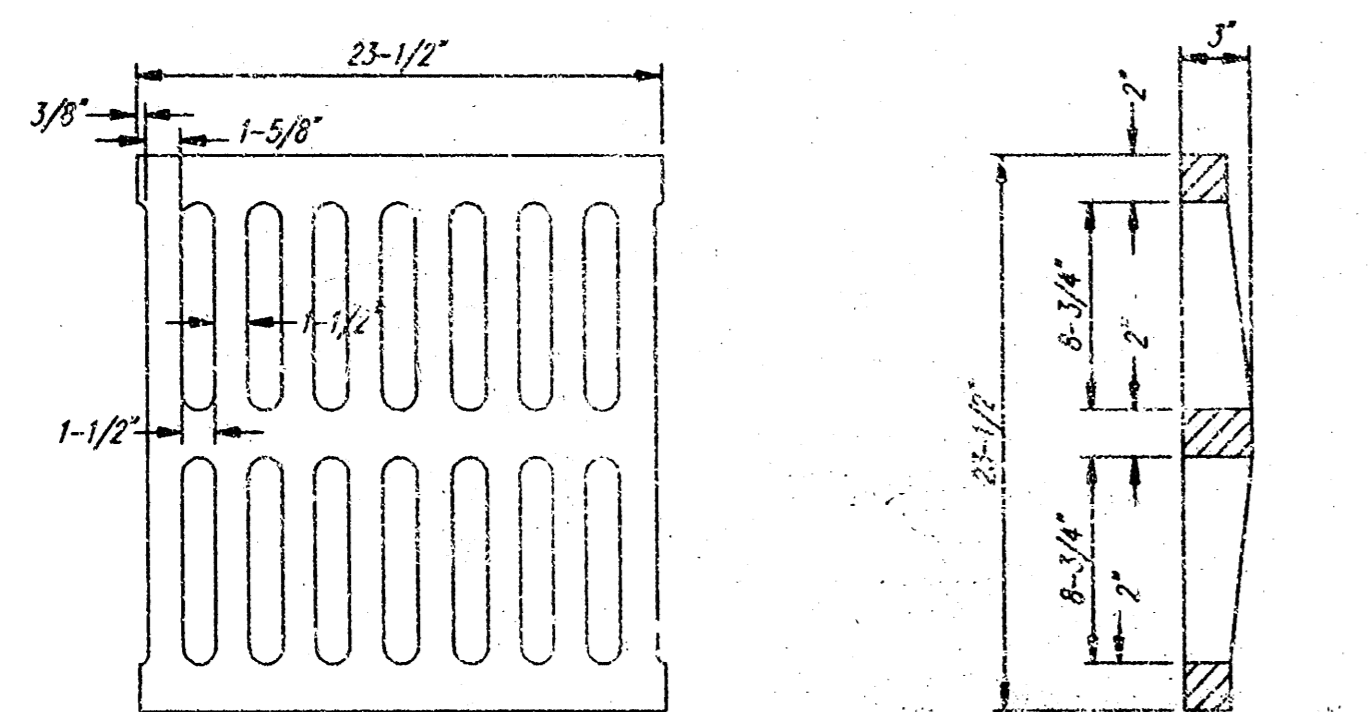
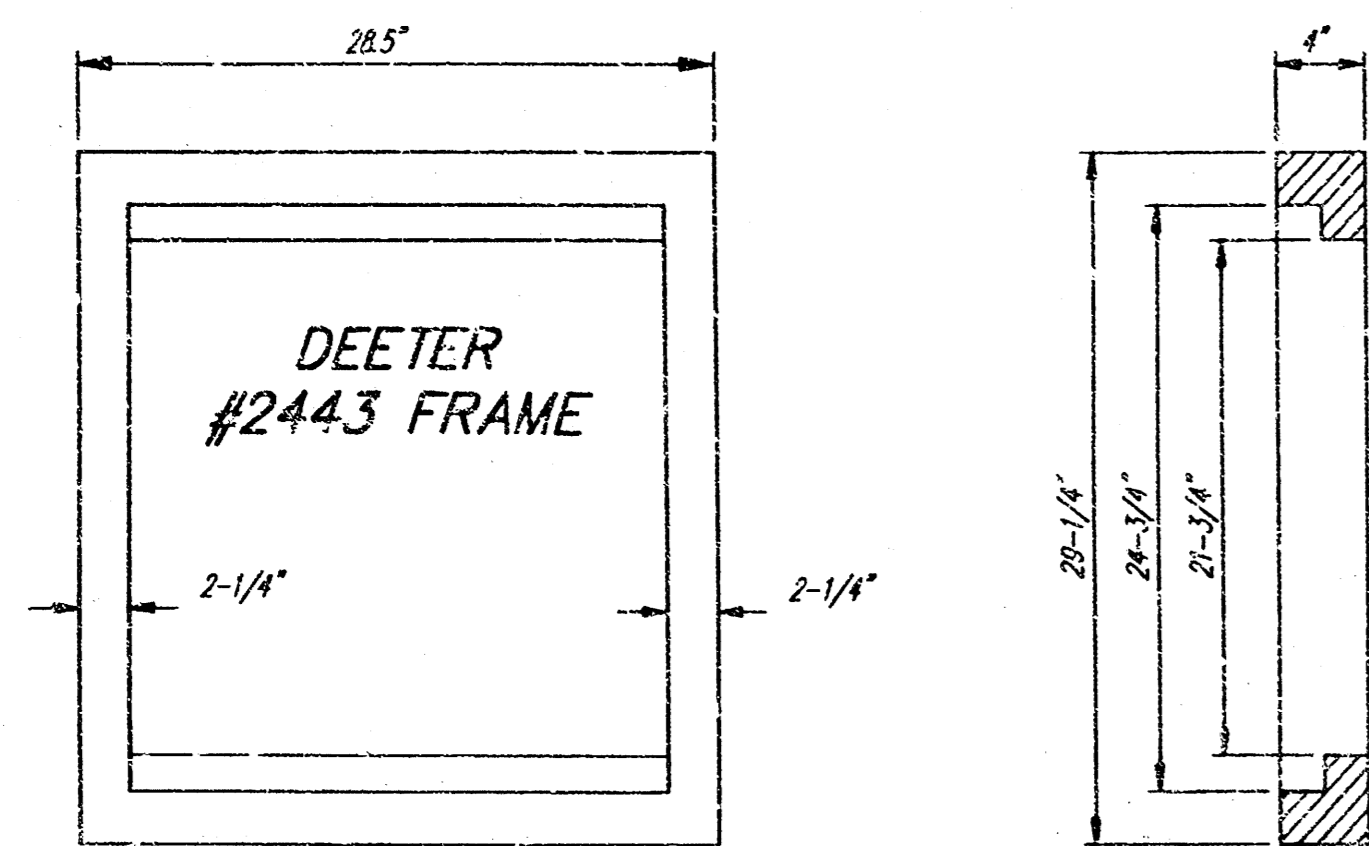
"□" Cut Top of Curb on the East End of the Return at the S.E. Corner of Dugan and Taft.
Elev. = 118.61 (City Datum)



THE DUGAN CENTRE SECOND



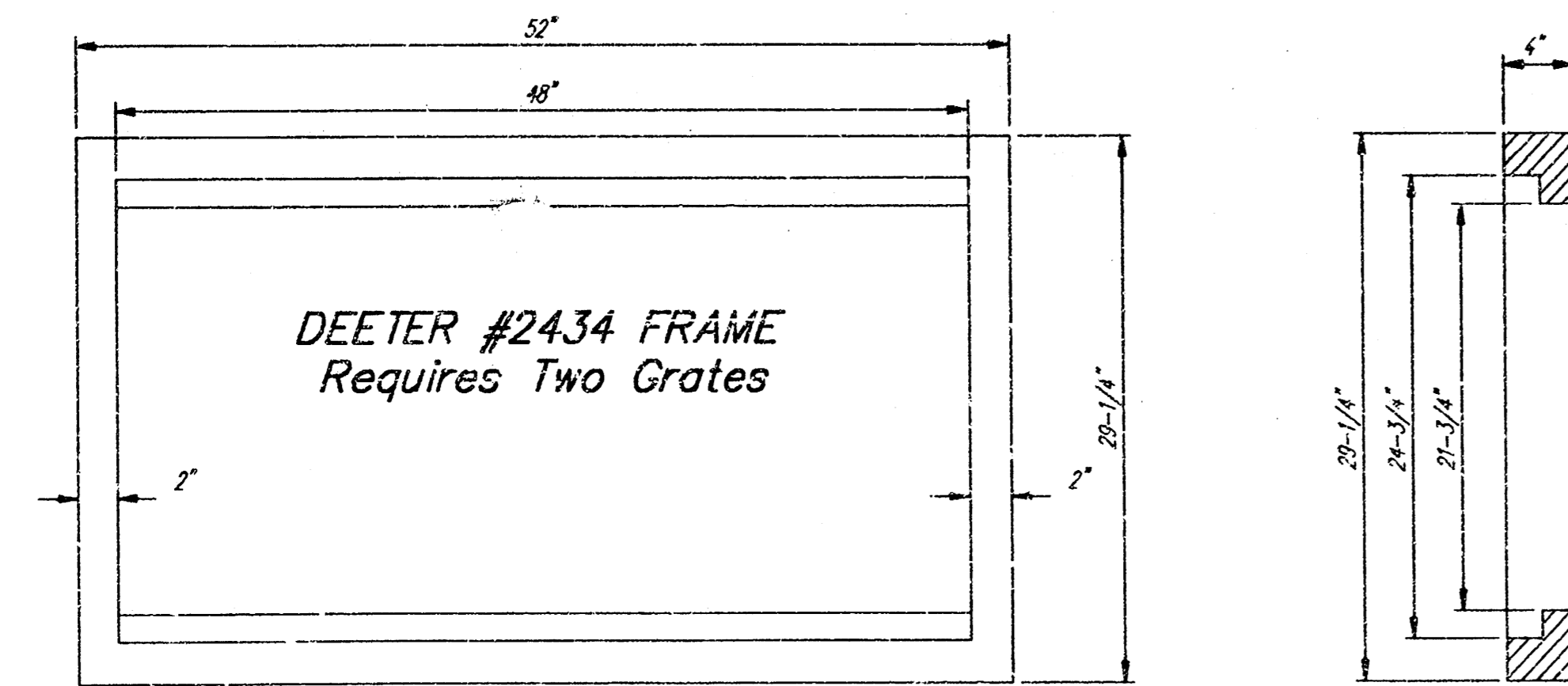
BEST BUY STORM SEWER - LINE 2			
BAUGHMAN COMPANY P. A. ENGINEERING & SURVEYING 316/262-7271 • 315 ELLIS • WICHITA, KANSAS 67211			
PROJECT NUMBER 410 PPS (607861)			SHEET 3
DESIGN BP	DRAWN MSP	UTIL. CHECKED DATE 27 Aug. 1993	SCALE Noted 4



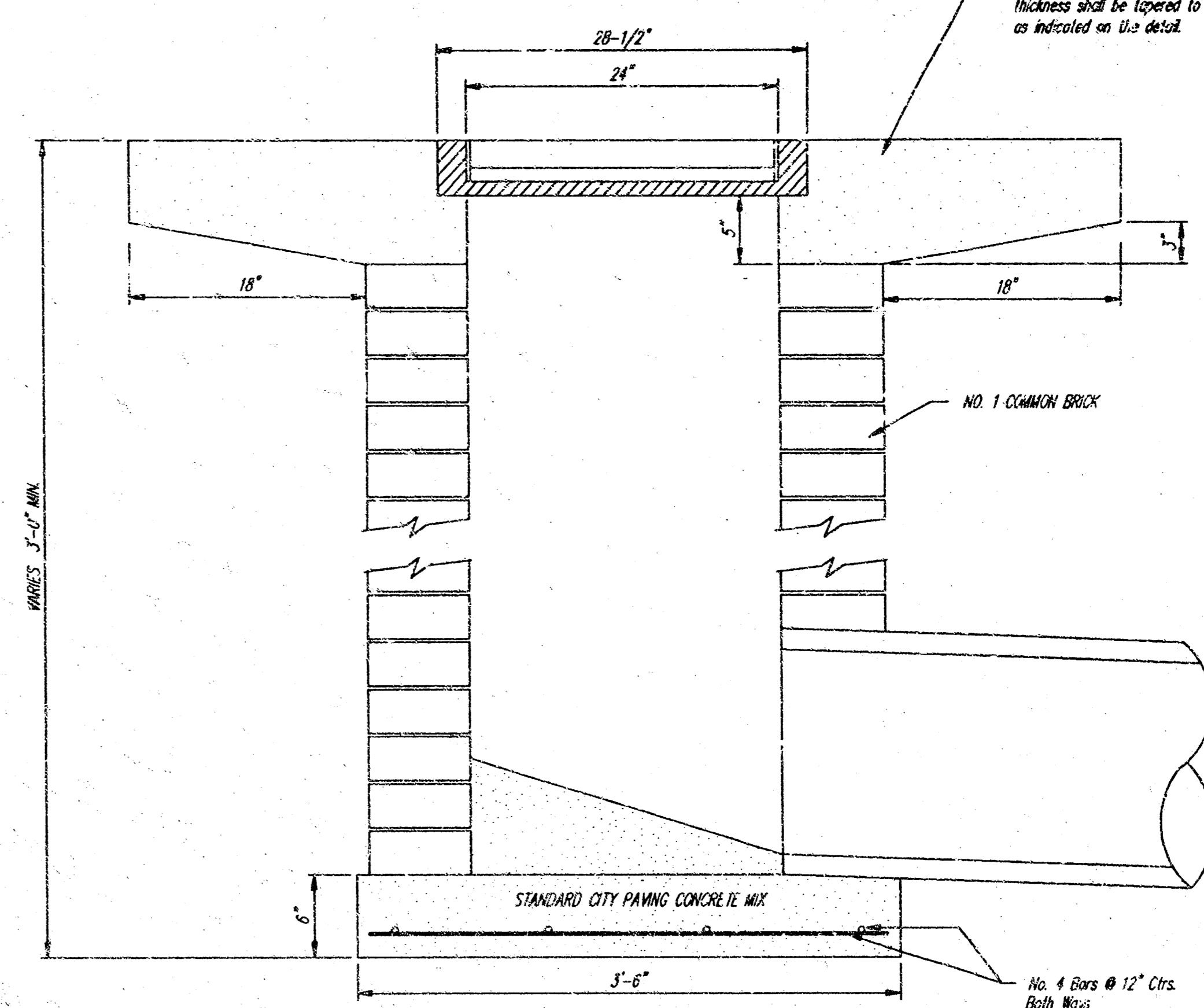
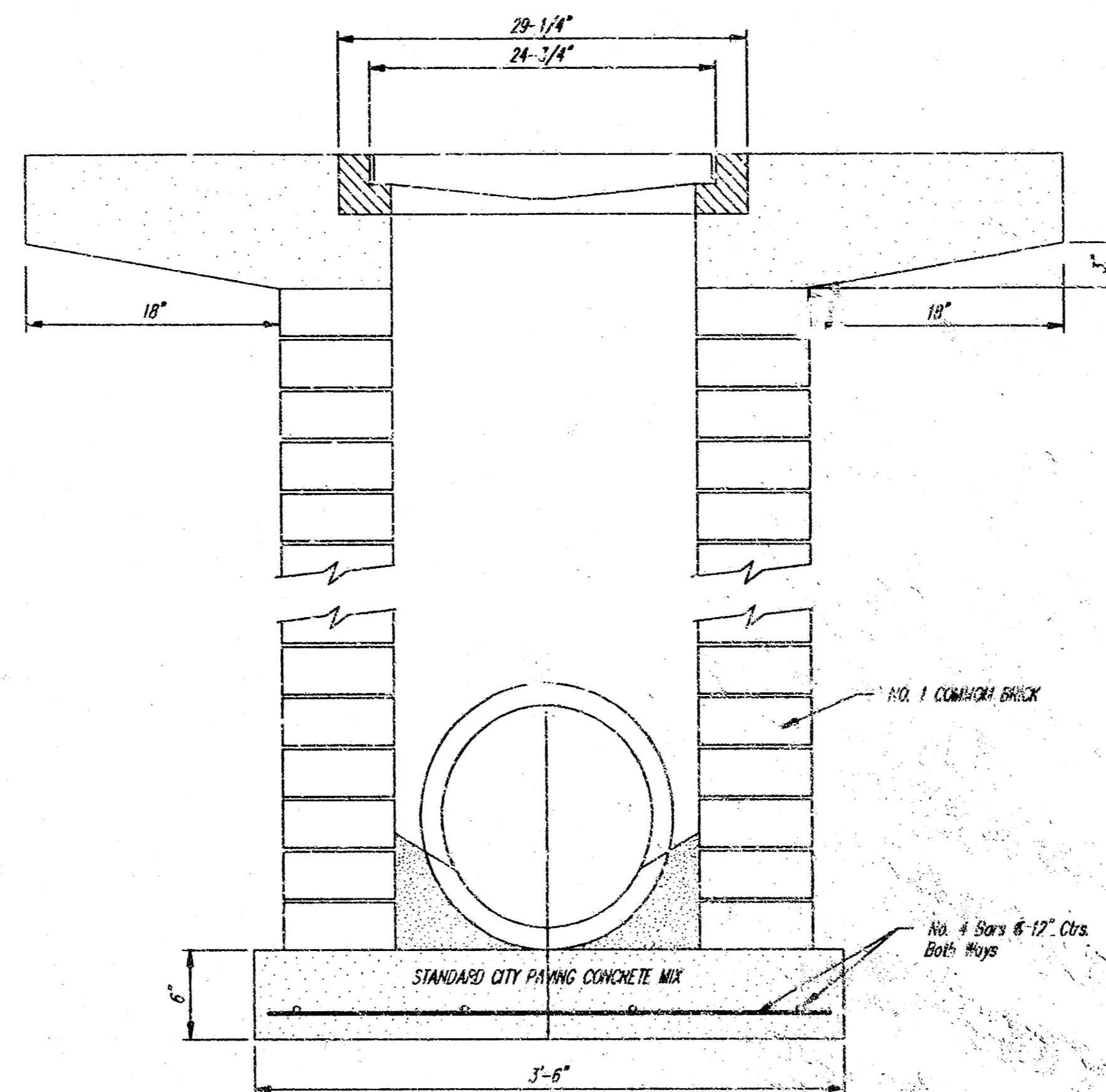
DEETER #2433 GRATE

24" x 24" Frame and Grate Detail

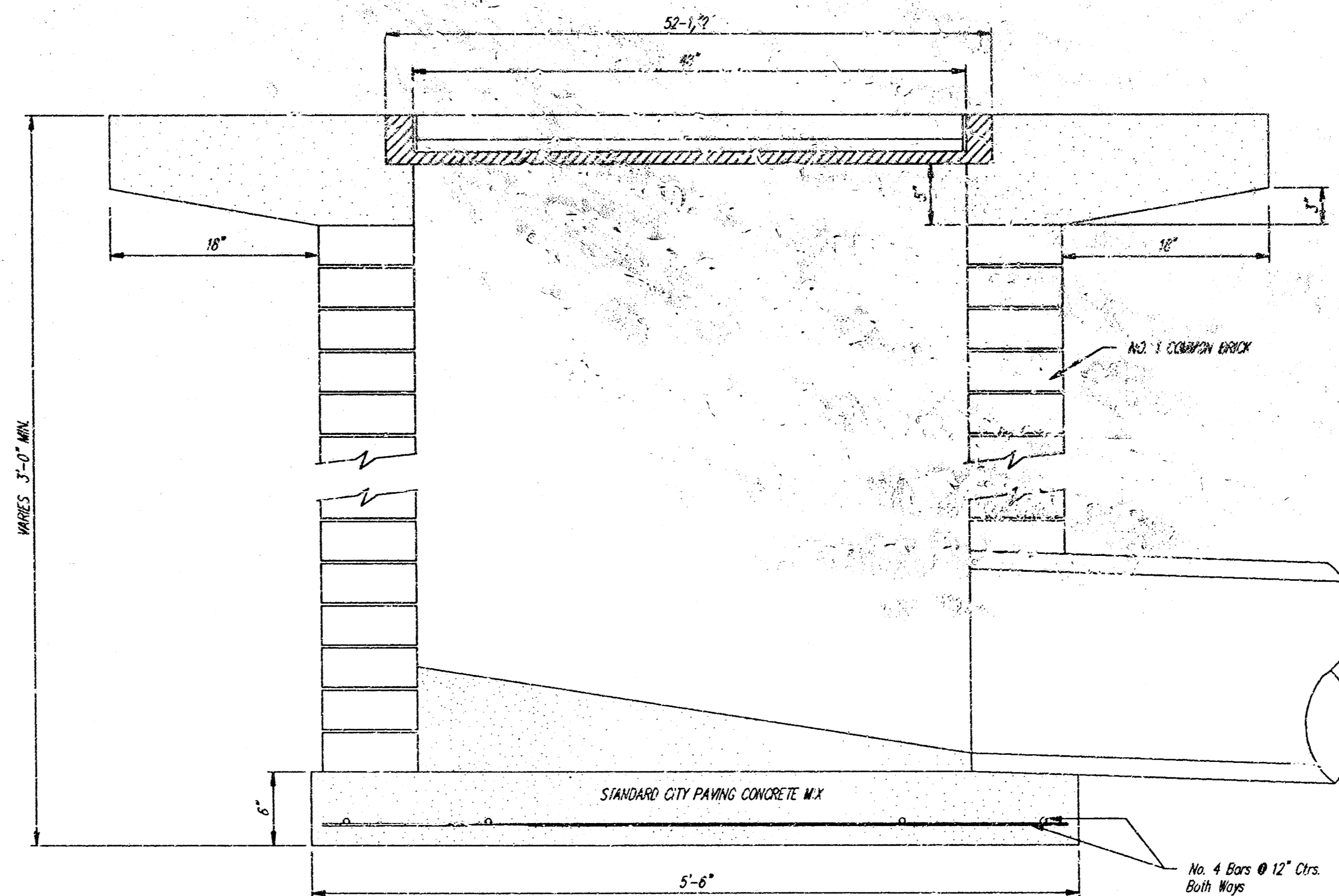
NOTE: Grates shall be imprinted on the top surface with "CITY OF WICHITA" using letters of least 1" in height. Other marking methods may be approved by the engineer.



Double 24" x 24" Frame Detail



Note: Concrete apron shall be constructed around the inlet when inlet is located in an ungraded area. Where the inlet is adjacent to pavement, the pavement thickness shall be tapered to the inlet in 10 inches as indicated on this detail.



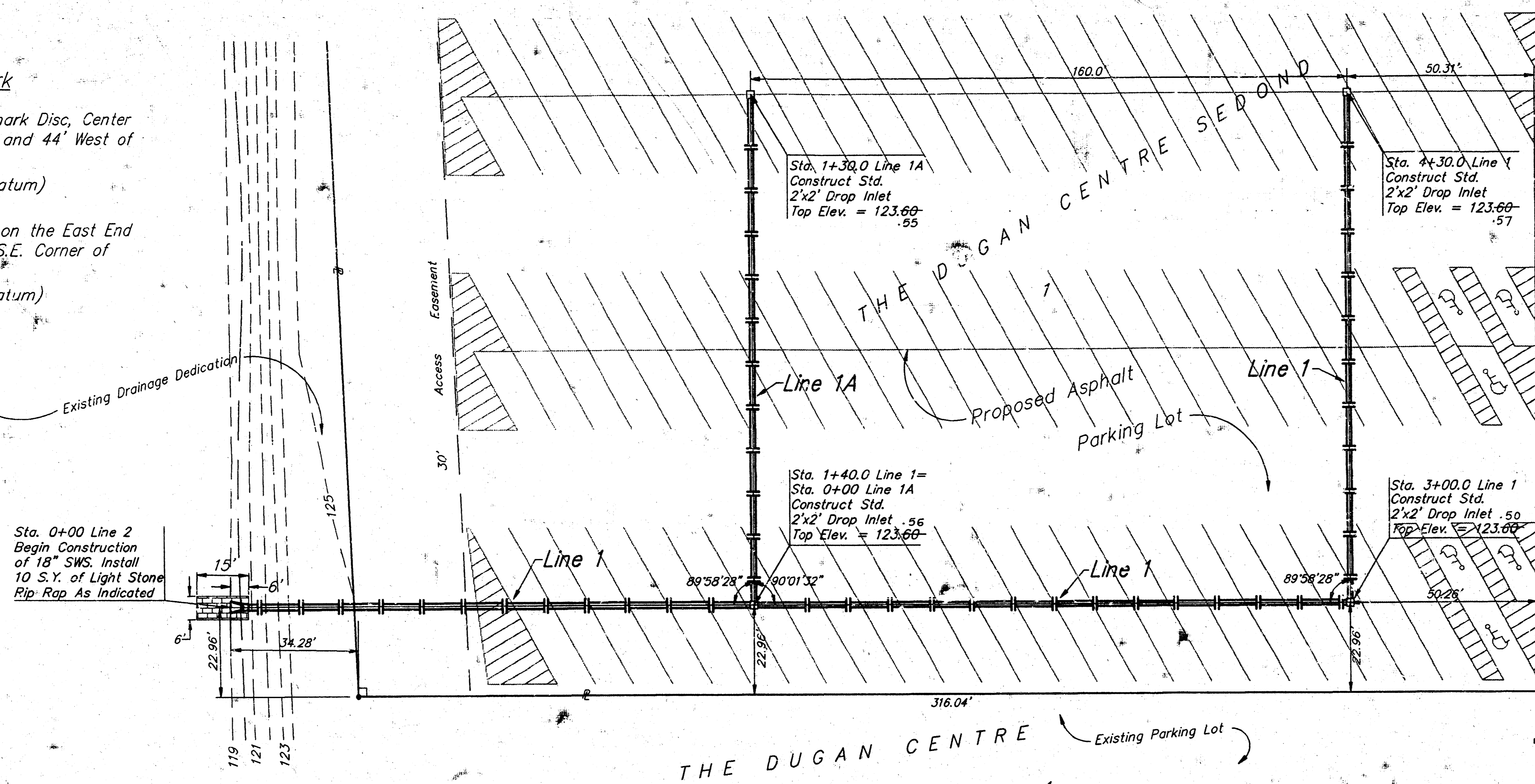
DROP INLET DETAILS
M.E. Lindebak, City Engineer
City of Wichita, Kansas

Project Number	4
410 PPS (607861)	4

Benchmark

City of Wichita Benchmark Disc, Center of U.S. 54 Pavements and 44' West of Centerline of Dugun.
Elev. = 121.65 (City Datum)

"□" Cut Top of Curb on the East End of the Return at the S.E. Corner of Dugun and Taft.
Elev. = 118.61 (City Datum)



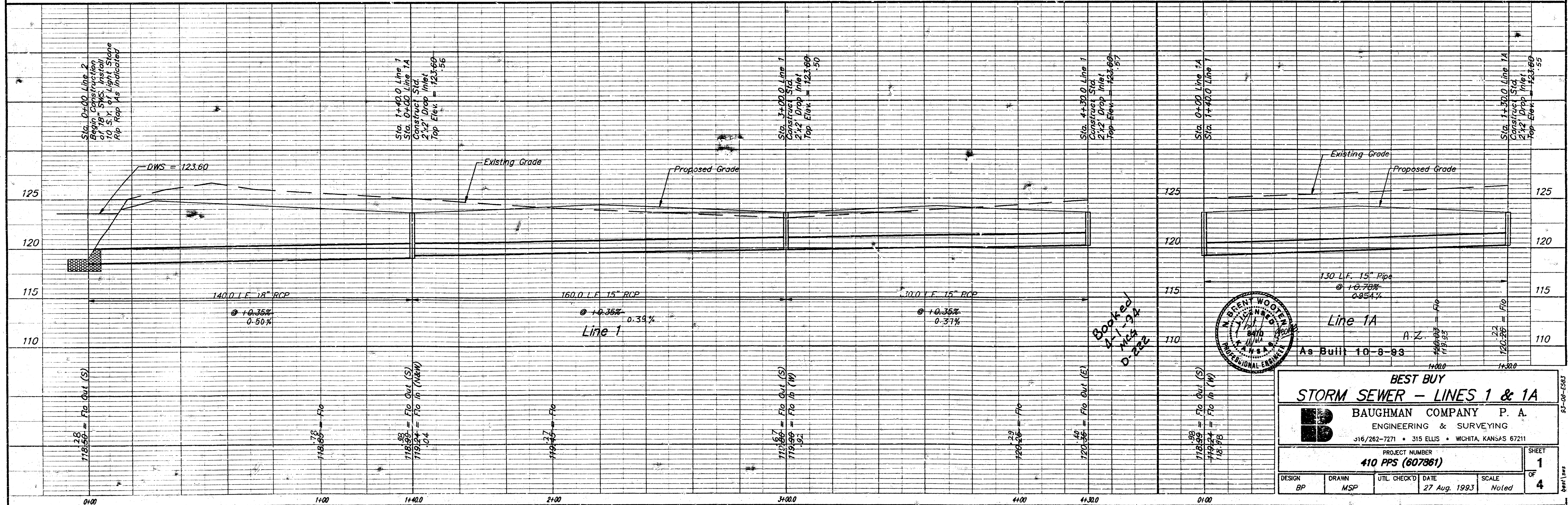
Scale: 1" = 20' Horizontal
1" = 5' Vertical
• = Iron

PROPOSED
BEST BUY
BUILDING

APPROVED AS NOTED
BY CITY ENGINEER OF WICHITA

Sanitary Sewers	
Storm Sewers	8/30/93 VRH
Driveway Approaches	
Water Mains	
Paving	

NOTE TO CONTRACTORS
Inspection and testing: This project is to be provided by a Licensed Consulting Engineering Firm under contract with the Owner/Developer. Said inspection to be in accordance with the City of Wichita standard construction engineering practices and certified by a Licensed Professional Engineer. No work shall be performed in dedicated easements or public right-of-way by the Contractor without such inspection nor shall any work be commenced without written authorization by the City Engineer.



BEST BUY
STORM SEWER - LINES 1 & 1A

BAUGHMAN COMPANY P. A.
ENGINEERING & SURVEYING
316/262-7271 • 315 ELLIS • WICHITA, KANSAS 67211

PROJECT NUMBER: **410 PPS (607861)**

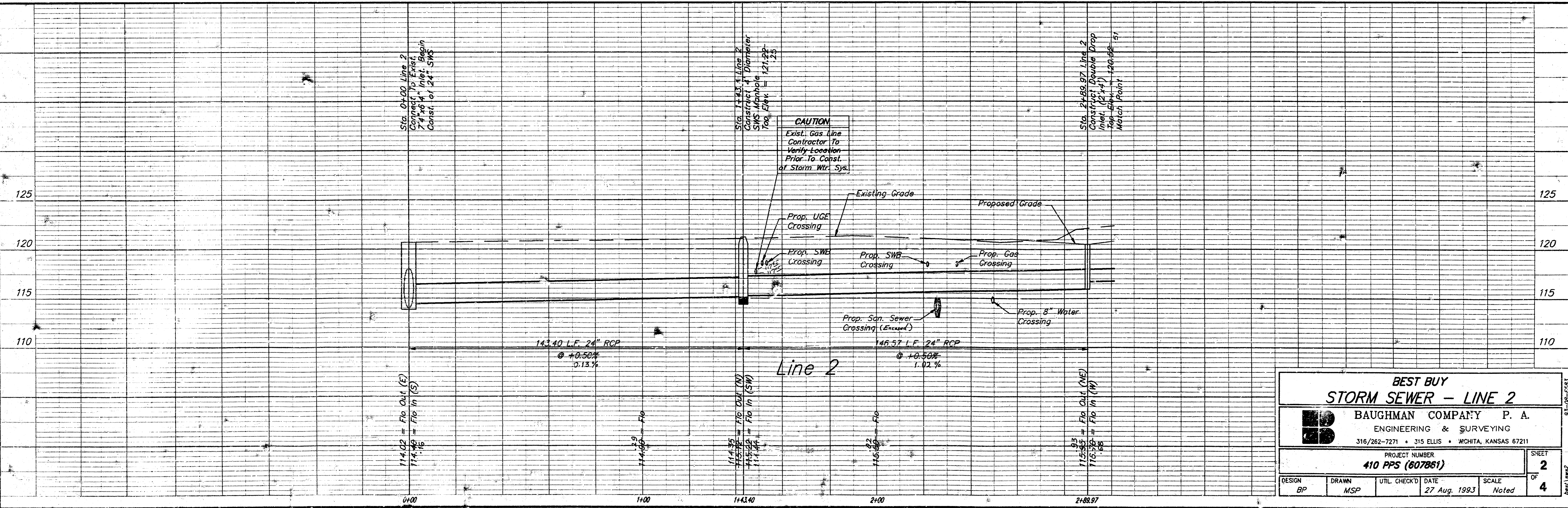
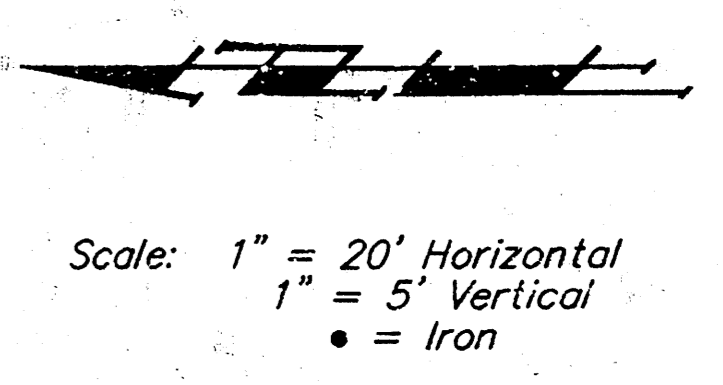
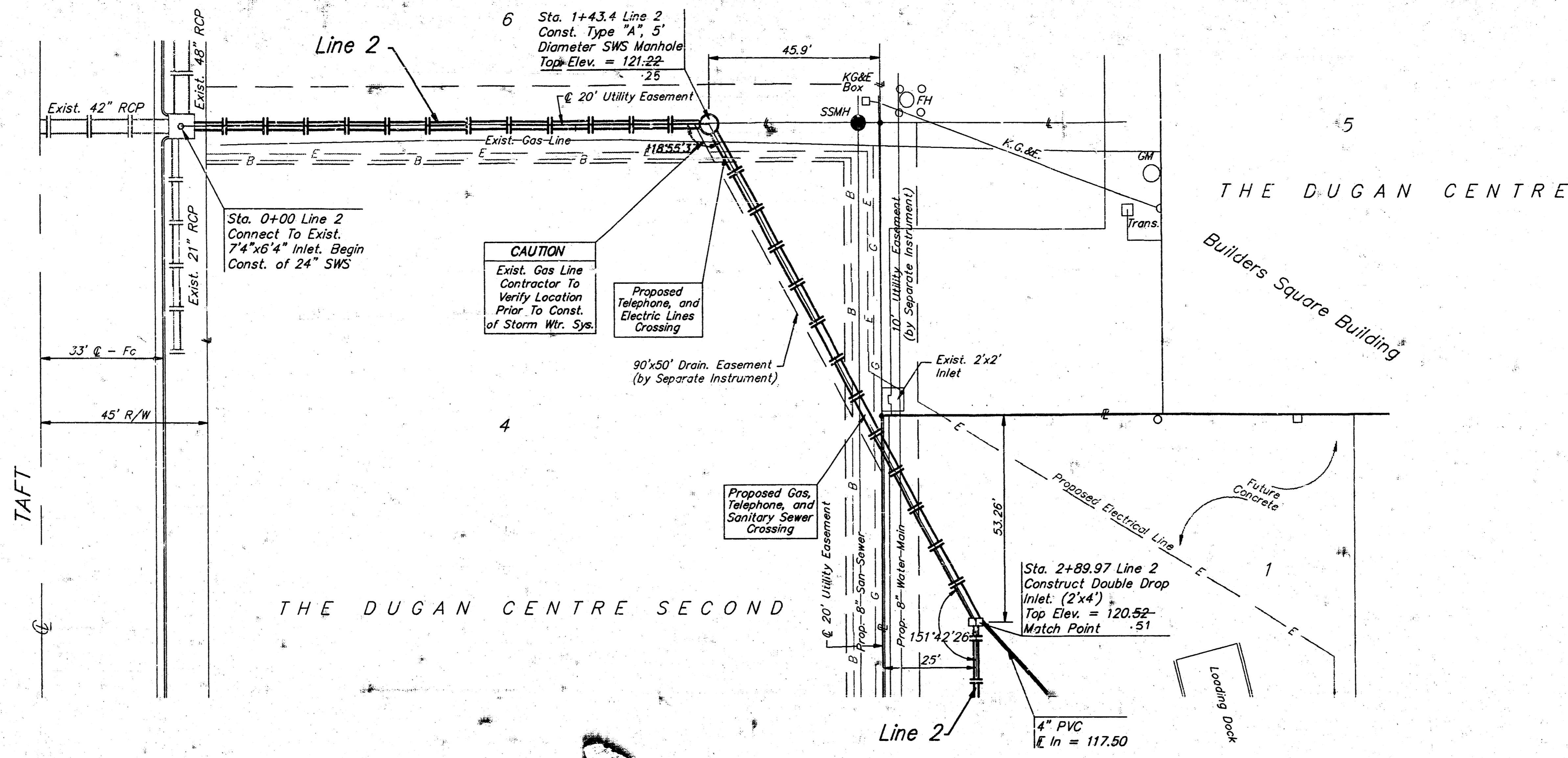
DESIGN: BP	DRAWN: MSP	UTIL. CHECK'D:	DATE: 27 Aug. 1993	SCALE: Noted
------------	------------	----------------	--------------------	--------------

SHEET 1 OF 4

Benchmark

City of Wichita Benchmark Disc, Center of U.S. 54 Pavements and 44' West of Centerline of Dugan.
Elev. = 121.65 (City Datum)

"□" Cut Top of Curb on the East End of the Return at the S.E. Corner of Dugan and Taft.
Elev. = 118.61 (City Datum)



BEST BUY
STORM SEWER - LINE 2

BAUGHMAN COMPANY P. A.
ENGINEERING & SURVEYING
316/262-7271 • 315 ELLIS • WICHITA, KANSAS 67211

PROJECT NUMBER
410 PPS (607861)

DESIGN BP	DRAWN MSP	UTIL CHECK'D	DATE 27 Aug. 1993	SCALE Noted	SHEET 2 OF 4
--------------	--------------	--------------	----------------------	----------------	-------------------------------------

93-08-0001
Sheet 1 of 2

