

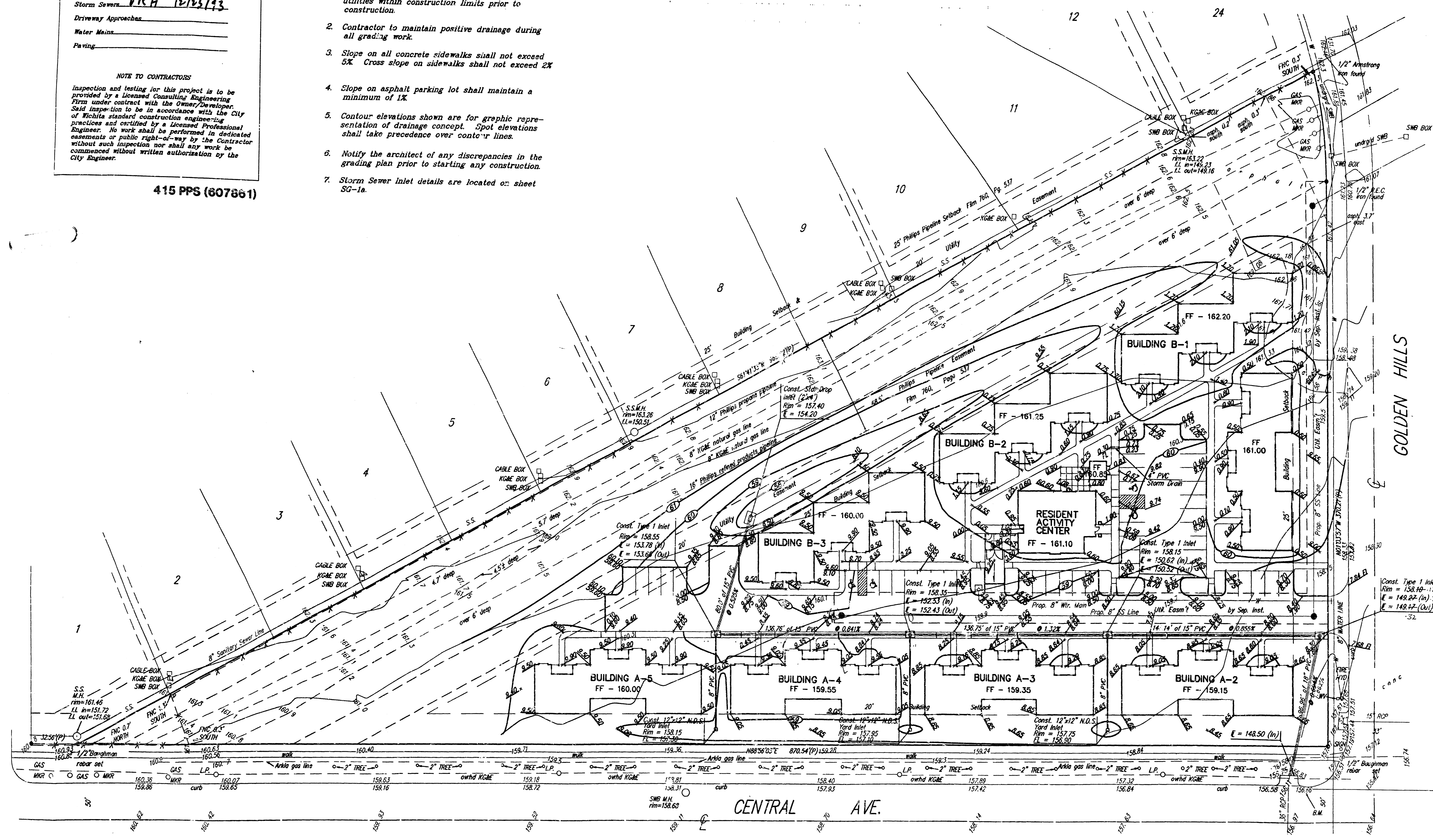
APPROVED AS NOTED
BY CITY ENGINEER OF WICHITA

Sanitary Sewer _____
Storm Sewer VRH 12/23/93
Driveway Approaches _____
Water Mains _____
Paving _____

NOTE TO CONTRACTORS
Inspection and testing for this project is to be provided by a Licensed Consulting Engineering Firm under contract with the Owner/Developer. Said inspection to be in accordance with the City of Wichita standard construction engineering practices and certified by a Licensed Professional Engineer. No work shall be performed in dedicated easements or public right-of-way by the Contractor without such inspection nor shall any work be commenced without written authorization by the City Engineer.

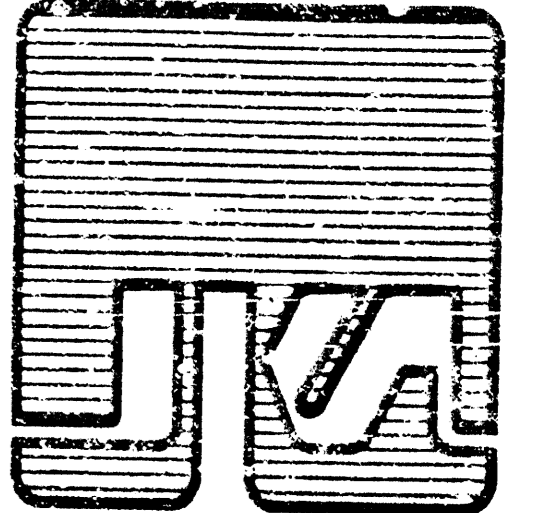
415 PPS (607861)

- GRADING NOTES:**
- Contractor shall be responsible for locating all utilities within construction limits prior to construction.
 - Contractor to maintain positive drainage during all grading work.
 - Slope on all concrete sidewalks shall not exceed 5%. Cross slope on sidewalks shall not exceed 2%.
 - Slope on asphalt parking lot shall maintain a minimum of 1%.
 - Contour elevations shown are for graphic representation of drainage concept. Spot elevations shall take precedence over contour lines.
 - Notify the architect of any discrepancies in the grading plan prior to starting any construction.
 - Storm Sewer Inlet details are located on sheet SG-1a.



prints issued
6-23-92
PRELIMINARY REVIEW
1-13-93
CONDITIONAL
SUBMITTAL
1-28-93
FIRM SUBMITTAL
9-22-93

revisions
GENERAL REVISION
1-25-93
HUD COMMENTS
7-28-93
FOR CONSTRUCTION
9-8-93
HUD REVIEW
11-5-93
HUD REVIEW
12-22-93
date drawn



JEFF KREHNIEL
ASSOCIATES, aia
architecture - planning

1300 east 10th street, topeka, kansas 67211
(316) 867-9830



FINCH HOLLOW
ELDERLY INDEPENDENT LIVING
707 GOLDEN HILLS
WICHITA, KANSAS
MENNONITE HOUSING RETIRED SERVICES

sheet title
SITE ARCHITECTURAL
PLAN

JOB # 92051 sheet
SG1
of 1 sheets

Scale 1" = 30'



BOOKED
D-288
MG

As Built 6-21-94

BAUGHMAN COMPANY P. A.
ENGINEERING & SURVEYING
314/282-7271 • 315 BLUE • WICHITA, KANSAS 67211