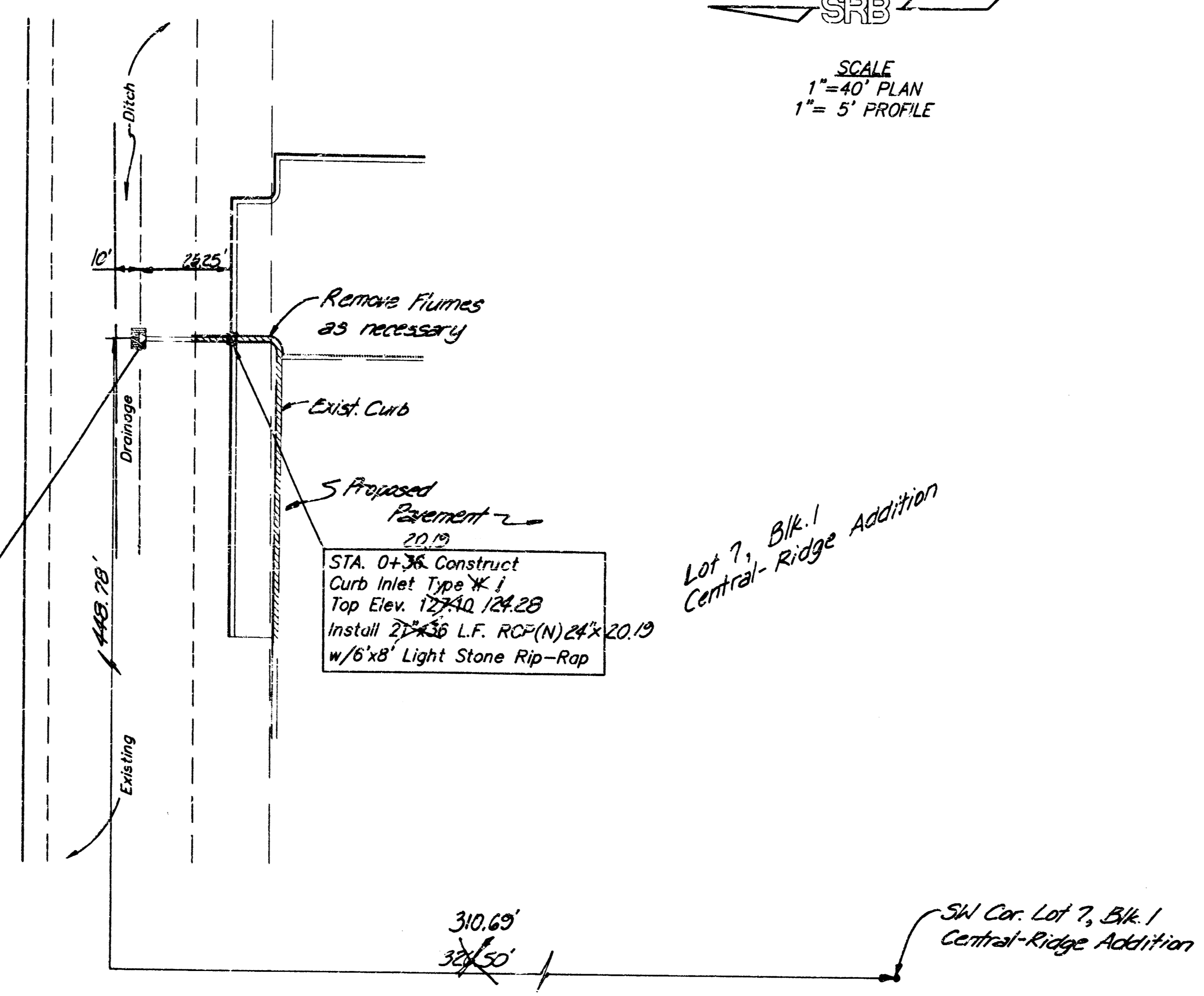


PROJECT SITE VICINITY MAP

BENCH MARK:
 1. \square cut on west curb return of existing driveway to YMCA at Newell Street.
 Elevation = 128.33 City Datum

DRAINAGE CALCULATIONS:
 D.A. = 3.2 Ac. (to Flumes)
 t_c assumed 15 min.
 $S_x = 4.56/nr$, $C=0.90$
 $Q = 13.1 cfs$

SRB
 SCALE
 1" = 40' PLAN
 1" = 5' PROFILE



GENERAL NOTES

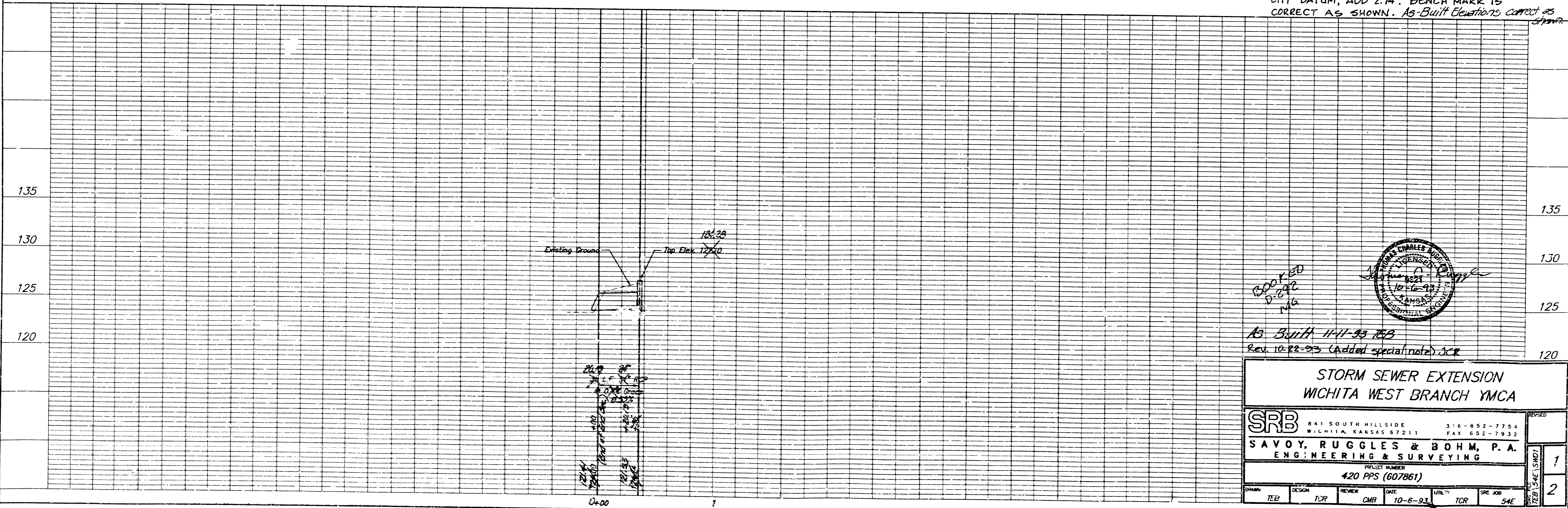
- The Contractor shall be responsible for preserving property irons. The Contractor will be required to re-establish any property corners which are disturbed by construction operations. Such corners shall be re-established by a licensed Land Surveyor in accordance with state laws.
- The Contractor will be required to provide a minimum notice of 24 hours to utility companies prior to starting any excavation. Call Kansas One-Call at 687-2470.

APPROVED AS NOTED
 BY CITY ENGINEER OF WICHITA

Sanitary Sewers _____
 Storm Sewers VRH 10/2/93
 Driveway Approaches _____
 Water Mains _____
 Paving _____

NOTE TO CONTRACTORS
 Inspection and testing for this project are to be provided by a Licensed Consulting Engineering Firm under contract with the Owner/Developer. Said inspection to be in accordance with the City of Wichita standard construction engineering practices and certified by a Licensed Professional Engineer. No work shall be performed in dedicated easements or public right-of-way by the Contractor without such inspection, nor shall any work be commenced without written authorization by the City Engineer.

SPECIAL NOTE:
 ELEVATIONS SHOWN (EXCEPT BENCH MARK) ARE NOT TO CITY DATUM. TO CONVERT TO CITY DATUM, ADD 2.74'. BENCH MARK IS CORRECT AS SHOWN. AS-BUILT ELEVATIONS CORRECT AS SHOWN.

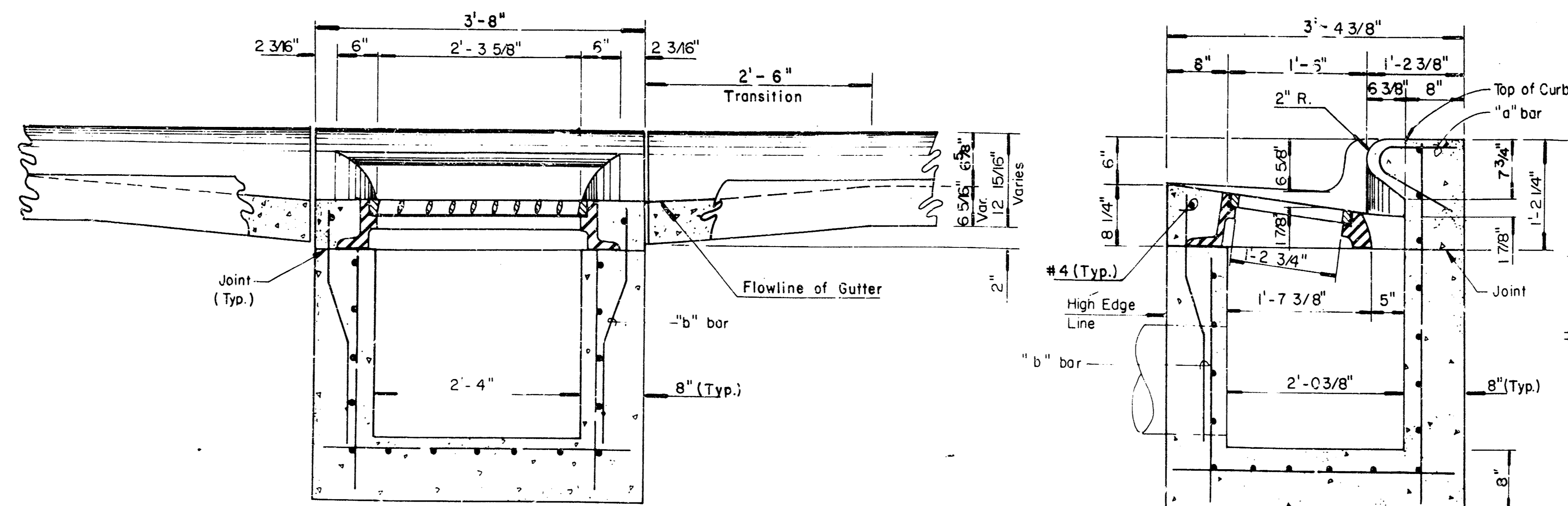


600' 80
 D-292
 MG

AS BUILT 11-11-93 JEB
 Rev. 10-22-93 (Added special notes) JCR

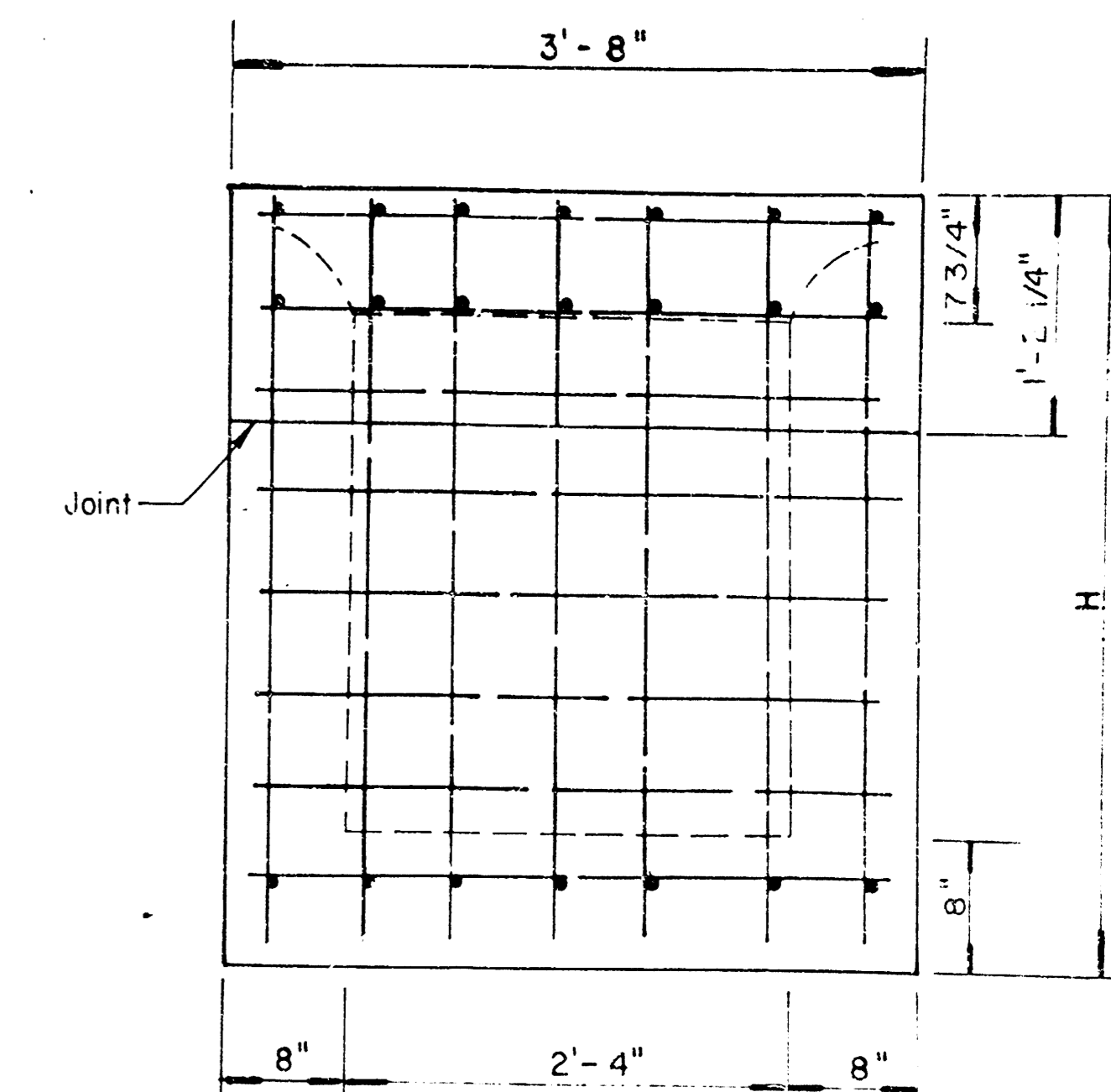
Professional Engineer Seal: JAMES CHARLES BOHM, P.E., No. 1016-93, State of Kansas

STORM SEWER EXTENSION WICHITA WEST BRANCH YMCA					
SRB	841 SOUTH HILLSIDE WICHITA, KANSAS 67211	316-652-7754 FAX 652-7932	REVISED		
SAVOY, RUGGLES & BOHM, P.A. ENGINEERING & SURVEYING			PROJECT NUMBER 420 PPS (607861)		
DESIGN	TEB	DATE	10-6-93	SRV JOB	54E
REVIEW	CMB	DATE	10-6-93	SRV JOB	54E
DATE	10-6-93	SRV JOB	54E	1	2

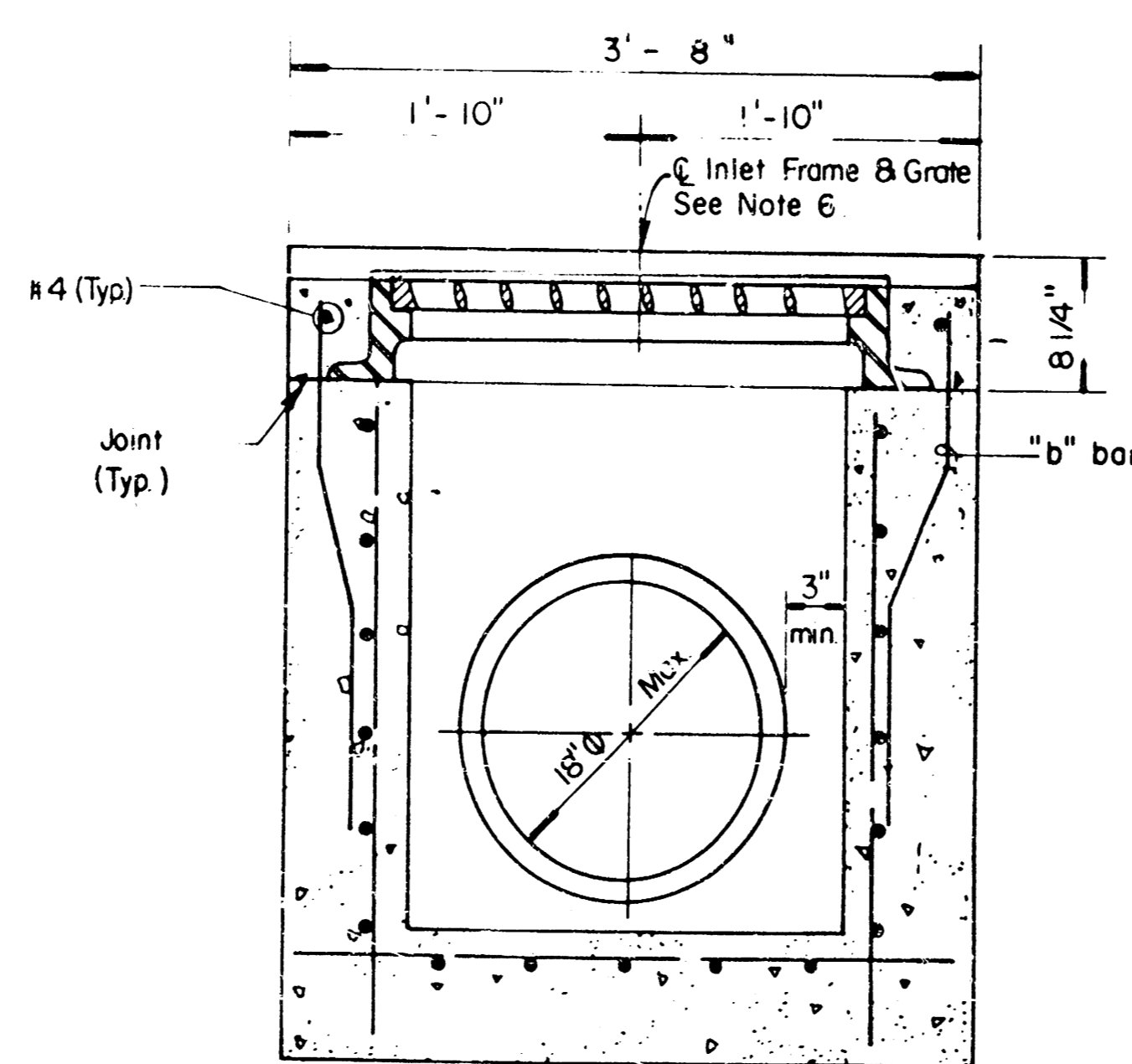


SECTION C-C

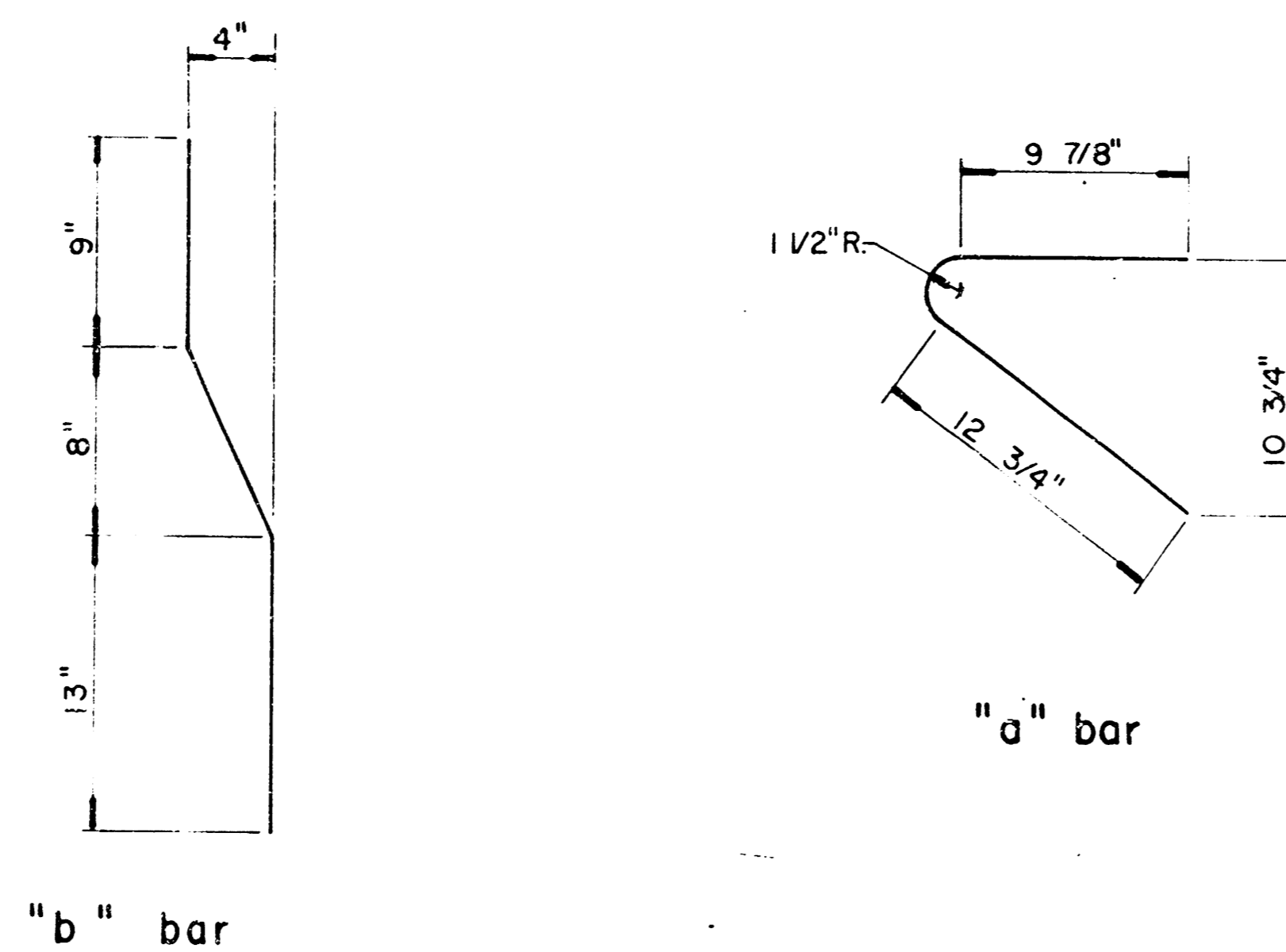
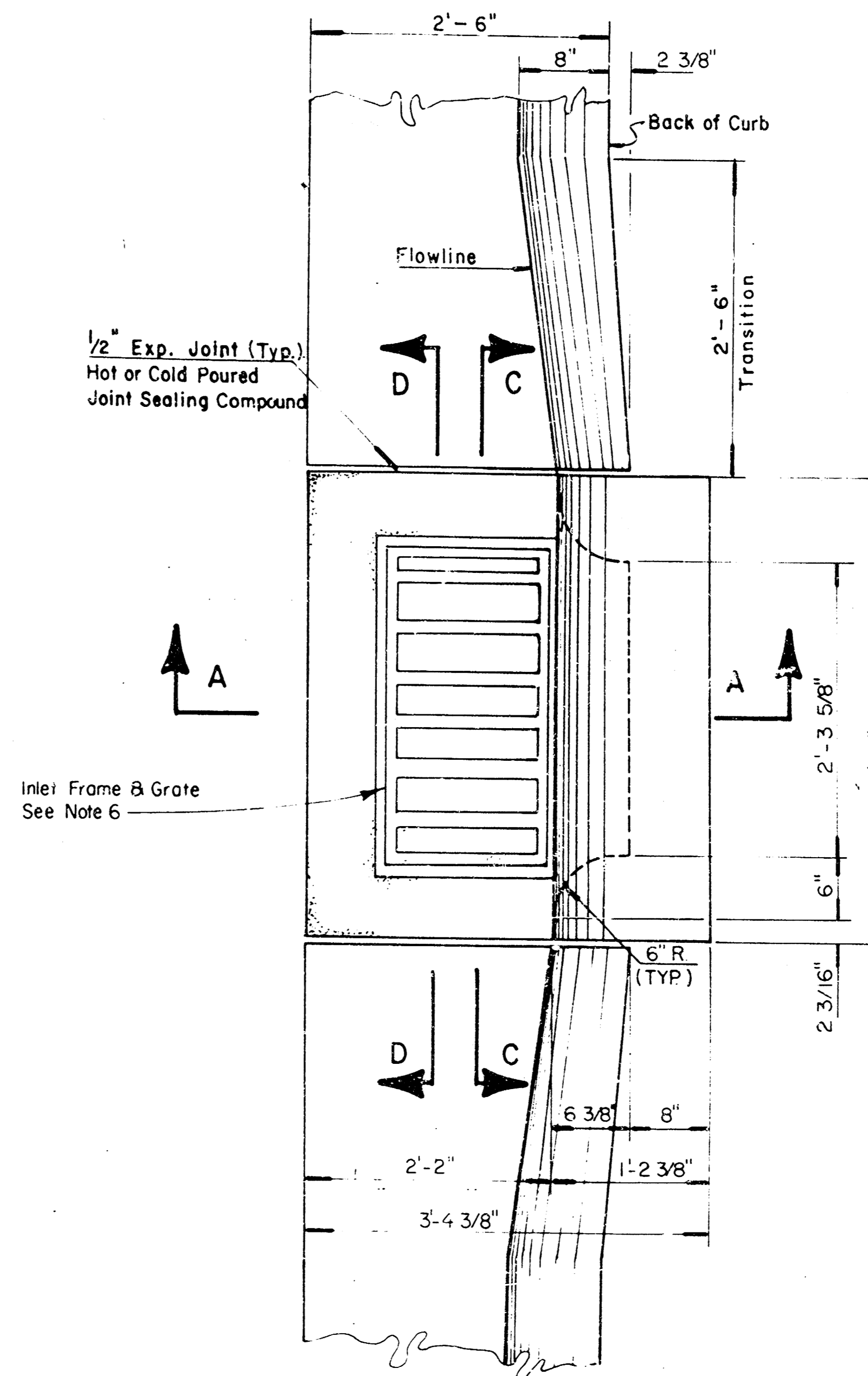
SECTION A-A



REAR WALL



SECTION D-D



BENDING DIAGRAM

DETAIL STANDARD TYPE II CURB INLET

CITY OF WICHITA, KANSAS

INLET OPENING = 6"x2'-3 5/8"

JANUARY, 1987

GENERAL NOTES:

1. Use the concrete mix specified for the City of Wichita concrete pavement throughout. All exposed edges shall be finished with an edging tool. Reinforcing bars shall be bent around pipe.
2. Inlet invert shall be shaped with 8 sack mix concrete to create flow channels and to increase hydraulic efficiency such that the inlet will be self cleaning between all inlet and/or outlet pipes.
3. All bars are #4 with 5" spacing and shall have a minimum clearance of 12 inches unless otherwise noted on the plans.
4. When directed by the Engineer, a small opening may be required in the back of the inlet in order to drain a low area. Reinforcing bars will extend through the openings. No deductions in concrete quantities will be made for these openings.
5. No deductions will be made in pay length of curb, gutter, or curb and gutter through the inlet area.
6. Use Neenah R-3289 HV Single Inlet Frame and Grate or approved equal. Inlet frame to be proof load tested to 40,000 lbs on unsupported side.
7. Reinforcing bars shall be cut or bent around pipes. No deduction in concrete quantities shall be made for pipe openings.
8. The vanes of the grate shall be oriented with respect to the flow arrows shown on the plans.
9. DEETER FOUNDRY, Inc. casting No. 244; with style H grate is an approved equal to NEENAH castings specified. Inlet drawing is based on NEENAH castings and concrete walls and supports will require some field modification to accommodate DEETER castings.