

PLANS FOR  
**STORM WATER SEWER IMPROVEMENTS**

FOR

LOT 1, BLOCK 1  
 KANSAS SURGERY AND RECOVERY CENTER ADDITION  
 WICHITA, KANSAS  
 CITY OF WICHITA PRIVATE PROJECT NO. 447PPS (607861)

INDEX OF SHEETS

T1	TITLE SHEET
SP1.2	UTILITY PLAN
SP1.4	GRADING AND EROSION CONTROL DETAILS
SP4.1	TYPE 1A CURB INLET
SP4.2	TYPE 10 CURB INLET
SP4.3	R.C. MANHOLE
SP4.4	MANHOLE FRAME AND COVER
SP4.5a	PROFILE
SP4.5b	PROFILE
SP4.6	SMS SCHEDULE AND TYPE 1 AREA INLET

**FEBRUARY, 1994**

PLANS PREPARED BY  
 PROFESSIONAL ENGINEERING CONSULTANTS, P.A.  
 ENGINEERS  
 WICHITA, KANSAS

APPROVED AS NOTED  
 BY CITY ENGINEER OF WICHITA

SANITARY SEWERS \_\_\_\_\_  
 STORM SEWERS VRH 3/4/94  
 DRIVEWAY APPROACHES \_\_\_\_\_  
 WATER MAINS \_\_\_\_\_  
 PAVING \_\_\_\_\_

BOOKED  
 D-244  
 MG



**RECORD DRAWING**

MAY 31 1995

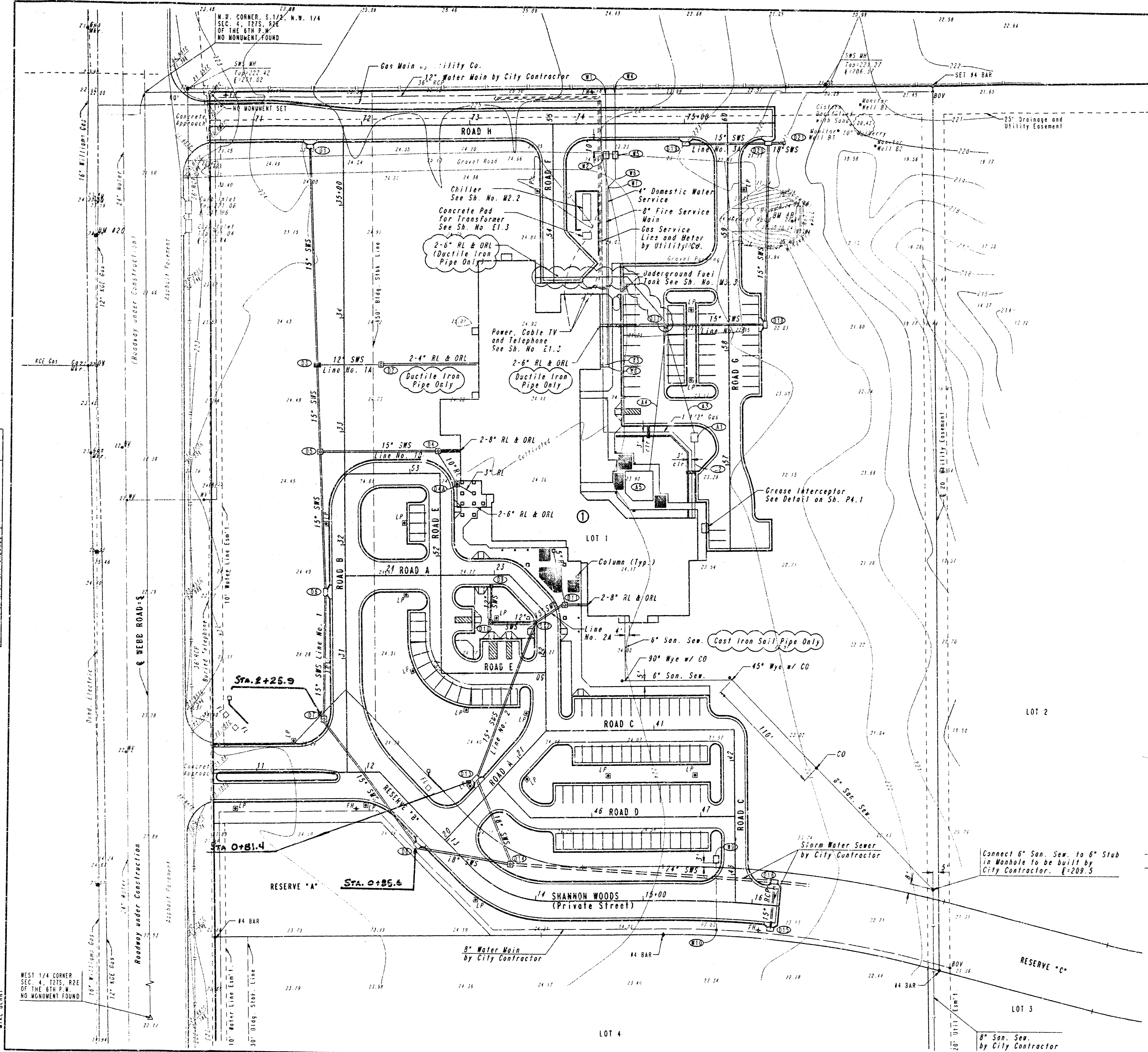
NOTE TO CONTRACTOR

INSPECTION AND TESTING FOR THIS PROJECT IS TO BE PROVIDED BY A LICENSED CONSULTING ENGINEERING FIRM UNDER CONTRACT WITH THE OWNER/DEVELOPER. SAID INSPECTION TO BE IN ACCORDANCE WITH THE CITY OF WICHITA STANDARD CONSTRUCTION ENGINEERING PRACTICES AND CERTIFIED BY A LICENSED PROFESSIONAL ENGINEER. NO WORK SHALL BE PERFORMED IN DEDICATED EASEMENTS OR PUBLIC RIGHT-OF-WAY BY THE CONTRACTOR WITHOUT SUCH INSPECTION NOR SHALL ANY WORK BE COMMENCED IN DEDICATED EASEMENTS OR PUBLIC RIGHT-OF-WAY WITHOUT WRITTEN AUTHORIZATION BY THE CITY ENGINEER.

AS CORRECTED DRAWINGS  
 S.E. ANDERSON, PE/LS  
 WHITEWATER, KS.  
 JULY, 1996



DRAWING NAME: 16-031827-2 KS TITLE  
 CENTER POINT: 1402  
 CENTER POINT: 1402  
 ROTATION ANGLE:  
 DATE LAST WORKED ON:  
 MIKE BERRY



SCALE: 1"=40'

B.M. #20 - RR SPIKE IN HIP JUST EAST OF SHANNON WOOD STREET ON WEST SIDE OF WEBB ROAD. ELEV. +224.39 CITY DATUM  
 B.M. #B - TOP #4 BAR, TOP CENTER WOUND NEAR NORTHEAST CORNER LOT 1, BLOCK 1. ELEV. +226.84 CITY DATUM

**NOTES**

- (1) CONNCT TO 8" VALVE INSTALLED BY CITY CONTRACTOR
- (2) DOUBLE DETECTOR CHECK VALVE ASSEMBLY, POST INDICATOR VALVE, AND POST MOUNTED SIAMISE FIRE DEPT. CONNECTION IN VAULT. SEE DETAILS SH. NO. SP1.3
- (3) 8-INCH 90° BEND WITH REACTION BACKING PER C.O.W. SPEC. NO. 14533
- (4) CONNECT TO 4" VALVE INSTALLED BY CITY CONTRACTOR
- (5) 2-INCH METER IN VAULT. SEE DETAILS SH. NO. SP1.3
- (6) 4-INCH 45° BEND WITH REACTION BACKING PER C.O.W. SPEC. NO. 14533
- (7) 4-INCH 45° BEND WITH REACTION BACKING PER C.O.W. SPEC. NO. 14533
- (8) 4-INCH 90° BEND WITH REACTION BACKING PER C.O.W. SPEC. NO. 14533
- (9) 2-INCH METER IN VAULT. SEE DETAILS SH. NO. SP1.3
- (10) WATER TAP BY CITY
- (11) ALTERNATE NO. 2 - FOUNTAIN PUMP PIT BY PUMP MFG.
- (12) ALTERNATE NO. 2 - 1-INCH WATER SERVICE TO FOUNTAIN PUMP PIT
- (13) ALTERNATE NO. 2 - 1 1/2-INCH DRAIN LINE FROM PUMP PIT
- (14) ALTERNATE NO. 2 - 3-INCH DRAIN LINE FROM FOUNTAIN POOL
- (15) ALTERNATE NO. 2 - FOUNTAIN BY FOUNTAIN MFG.

**LEGEND**

- NO MONUMENT SET
- MONUMENT SET
- LIGHT BALLARD
- LP LIGHT POLE (SEE SH. NO. E1.3)
- FL FLOODLIGHT (SEE SH. NO. E1.3)
- EXISTING GROUND ELEVATION (ADD 200 FOR CITY DATUM)
- EXISTING CONTOUR (CITY DATUM)
- RL RAIN LEADER
- ORL OVERFLOW RAIN LEADER
- SWS STORM WATER SEWER
- CO CLEAN OUT (SEE SH. NO. P3.1)
- (S) DRAINAGE STRUCTURE (SEE SCHEDULE SH. NO. SP1.6)
- (W) WATER LINE STRUCTURE/FITTING (SEE NOTES ABOVE)
- UTILITY LINE BY OTHERS (CITY CONTRACTOR OR UTILITY COMPANY)
- UTILITY LINE UNDER THIS CONTRACT
- SEE SH. NO. SP4.5 FOR STORM WATER SEWER PROFILES
- SEE SH. NO. SP5.1 FOR IRRIGATION PLAN

MAY 31 1995 **RECORD DRAWING**

SURGERY AND RECOVERY CENTER  
 KANSAS SURGERY AND RECOVERY CENTER, L.P.  
**UTILITY PLAN**  
 29TH AND WEBB ROAD  
 WICHITA, KANSAS  
**PROFESSIONAL ENGINEERING CONSULTANTS, P.A.**  
 ENGINEERS  
 WICHITA, KANSAS

Designed by	WRB	Checked by	
Drawn by	DEP	Date	FEB. 1994
		Job No.	93527-1

PLAN	REVISED	DATE
NO. 1	BY	
NO. 2	BY	
NO. 3	BY	
NO. 4	BY	
NO. 5	BY	
NO. 6	BY	
NO. 7	BY	
NO. 8	BY	
NO. 9	BY	
NO. 10	BY	
NO. 11	BY	
NO. 12	BY	
NO. 13	BY	
NO. 14	BY	
NO. 15	BY	
NO. 16	BY	
NO. 17	BY	
NO. 18	BY	
NO. 19	BY	
NO. 20	BY	
NO. 21	BY	
NO. 22	BY	
NO. 23	BY	
NO. 24	BY	
NO. 25	BY	
NO. 26	BY	
NO. 27	BY	
NO. 28	BY	
NO. 29	BY	
NO. 30	BY	
NO. 31	BY	
NO. 32	BY	
NO. 33	BY	
NO. 34	BY	
NO. 35	BY	
NO. 36	BY	
NO. 37	BY	
NO. 38	BY	
NO. 39	BY	
NO. 40	BY	
NO. 41	BY	
NO. 42	BY	
NO. 43	BY	
NO. 44	BY	
NO. 45	BY	
NO. 46	BY	
NO. 47	BY	
NO. 48	BY	
NO. 49	BY	
NO. 50	BY	
NO. 51	BY	
NO. 52	BY	
NO. 53	BY	
NO. 54	BY	
NO. 55	BY	
NO. 56	BY	
NO. 57	BY	
NO. 58	BY	
NO. 59	BY	
NO. 60	BY	
NO. 61	BY	
NO. 62	BY	
NO. 63	BY	
NO. 64	BY	
NO. 65	BY	
NO. 66	BY	
NO. 67	BY	
NO. 68	BY	
NO. 69	BY	
NO. 70	BY	
NO. 71	BY	
NO. 72	BY	
NO. 73	BY	
NO. 74	BY	
NO. 75	BY	
NO. 76	BY	
NO. 77	BY	
NO. 78	BY	
NO. 79	BY	
NO. 80	BY	
NO. 81	BY	
NO. 82	BY	
NO. 83	BY	
NO. 84	BY	
NO. 85	BY	
NO. 86	BY	
NO. 87	BY	
NO. 88	BY	
NO. 89	BY	
NO. 90	BY	
NO. 91	BY	
NO. 92	BY	
NO. 93	BY	
NO. 94	BY	
NO. 95	BY	
NO. 96	BY	
NO. 97	BY	
NO. 98	BY	
NO. 99	BY	
NO. 100	BY	

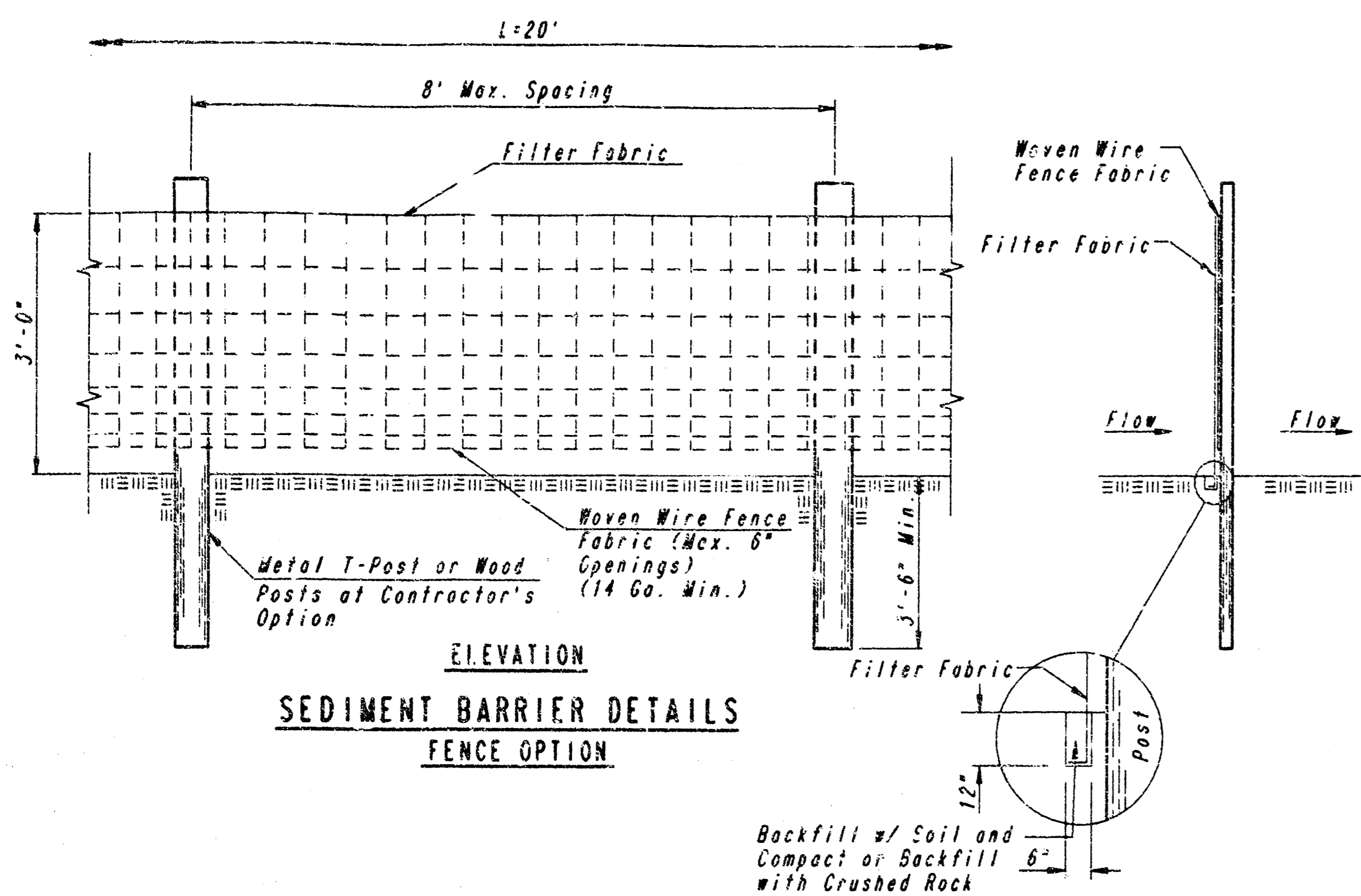
DRAWING MADE BY 16-93527-2 UTIL-111 24x36  
 LOCATION BY 4184  
 CENTER COORDINATES:  
 DATUM: NAD 83  
 DATE LAST WORKED ON:  
 MIKE BERRY

WEST 1/4 CORNER  
 SEC. 4, T27S, R2E  
 OF THE 6TH P.M.  
 NO MONUMENT FOUND

N.W. CORNER S. 1/2, N.W. 1/4  
 SEC. 4, T27S, R2E  
 OF THE 6TH P.M.  
 NO MONUMENT FOUND

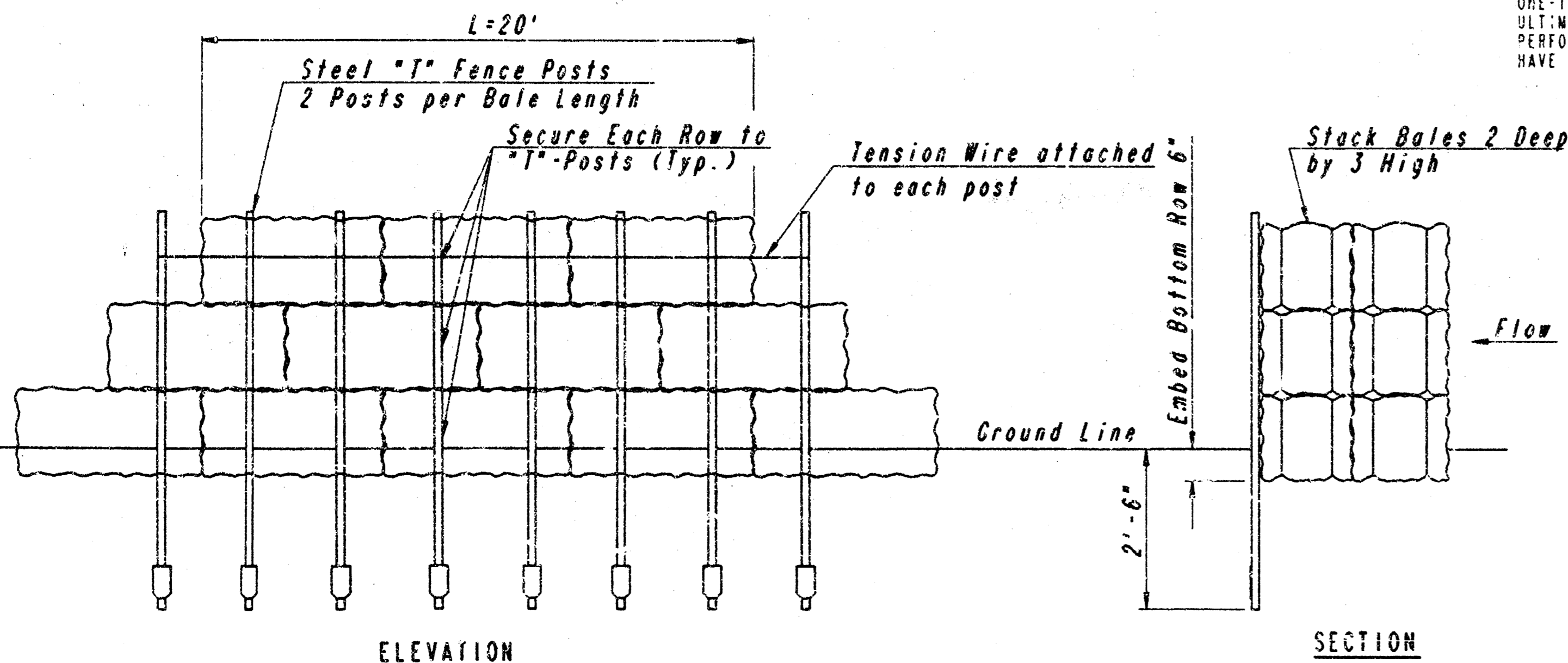
**GENERAL NOTES**

- TEMPORARY FIRE LANE TO BE PROVIDED IN ACCORDANCE WITH FIRE DEPARTMENT REQUIREMENTS AT ALL TIMES. SURFACE TO BE MINIMUM 4" CRUSHED ROCK (KDOT 4B-3) OR APPROVED EQUAL. MAINTAIN FIRE LANE SURFACE THROUGHOUT PROJECT CONSTRUCTION TIME.
- TOPSOIL STRIPPED ON SITE TO BE UTILIZED IN LANDSCAPING. EXCESS TOPSOIL, IF ANY, TO BE STOCKPILED ON A SITE TO BE APPROVED BY THE OWNER ON LOT 2, BLOCK 1, KANSAS SURGERY AND RECOVERY CENTER ADDITION.
- EXCESS EXCAVATED MATERIAL TO BE STOCKPILED ON A SITE TO BE APPROVED BY THE OWNER ON LOT 2, BLOCK 1, KANSAS SURGERY AND RECOVERY CENTER ADDITION.
- SEDIMENT BARRIERS SHALL BE INSTALLED AT LOCATIONS SHOWN ON THE PLANS OR AS DIRECTED BY THE ENGINEER.
- SEDIMENT BARRIERS SHALL BE ERECTED PRIOR TO THE COMMENCEMENT OF EARTHWORK OPERATIONS IN A GIVEN BASIN. REMOVAL AND DISPOSAL OF ACCUMULATED SILT AND DEBRIS AND/OR REMOVAL AND RECONSTRUCTION OF SEDIMENT BARRIERS WILL BE PERFORMED THROUGHOUT THE PROJECT LIFE WHEN DEBRIS REACHES ONE THIRD THE FENCE HEIGHT OR AS DEEMED NECESSARY BY THE ENGINEER. SEDIMENT BARRIERS AND ACCUMULATED DEBRIS SHALL BE REMOVED AND DISPOSED OF BY THE CONTRACTOR AFTER TURF COVER HAS BEEN ESTABLISHED, UNLESS OTHER ARRANGEMENTS HAVE BEEN AGREED TO.
- FILTER FABRIC FOR FENCE OPTION SEDIMENT BARRIERS SHALL BE RESISTANT TO ULTRAVIOLET LIGHT. MATERIALS MAY BE SUPPLIED BY THE FOLLOWING MANUFACTURERS:  
 MIPAFI, INC. : 100K  
 HOECHST FIBERS INDUSTRIES : TREVIRA 1115  
 EXXON : TYPAR 3301 W
- MATERIALS SUPPLIED BY THE ABOVE NAMED MANUFACTURERS SHALL BE ACCEPTED UPON VISUAL INSPECTION BY THE ENGINEER. OTHER COMPARABLE MATERIALS MAY BE USED IF APPROVED BY THE ENGINEER.
- FILTER FABRIC SHALL BE ATTACHED TO FENCE FABRIC BY MEANS OF THE WIRES OR RING RINGS PRIOR TO ATTACHMENT OF FENCE/FABRIC COMBINATION ONTO THE POSTS.
- BALES USED MAY BE EITHER HAY OR STRAW, PROVIDED THEY ARE SOUND AND INACT.
- INLET PROTECTION METHOD MAY BE ANY OF THE APPLICABLE TYPES SHOWN AT THE CONTRACTOR'S OPTION.
- GRAVEL FILTER SHALL BE A DURABLE, WELL-GRADED SAND-GRAVEL OR CRUSHED STONE, MAXIMUM 1-1/2 IN. SIZE, AS AN ALTERNATE GRAVEL FILLED BAGS OF BURLAP OR OTHER FABRIC MAY BE USED. WHERE BAGS ARE USED, THE WIRE SCREEN, WHERE SHOWN, MAY BE OMITTED.
- INLET PROTECTION SHALL BE ERECTED AS SOON AS THE STRUCTURE HAS BEEN BACKFILLED. MEASURES SHALL BE TAKEN TO PRECLUDE ENTRY OF SEDIMENT INTO THE STORM WATER SEWER SYSTEM DURING CONSTRUCTION OF THE STRUCTURE.
- REMOVAL AND DISPOSAL OF ACCUMULATED SILT AND DEBRIS AND/OR REMOVAL AND RECONSTRUCTION OF INLET PROTECTION INSTALLATIONS SHALL BE PERFORMED THROUGHOUT THE PROJECT LIFE WHENEVER DEBRIS REACHES ONE-THIRD THE BARRIER HEIGHT, OR AS DEEMED NECESSARY BY THE ENGINEER. ULTIMATE REMOVAL AND DISPOSAL OF INLET PROTECTION AND DEBRIS WILL BE PERFORMED AFTER SEEDING IS ESTABLISHED, UNLESS OTHER ARRANGEMENTS HAVE BEEN MADE.

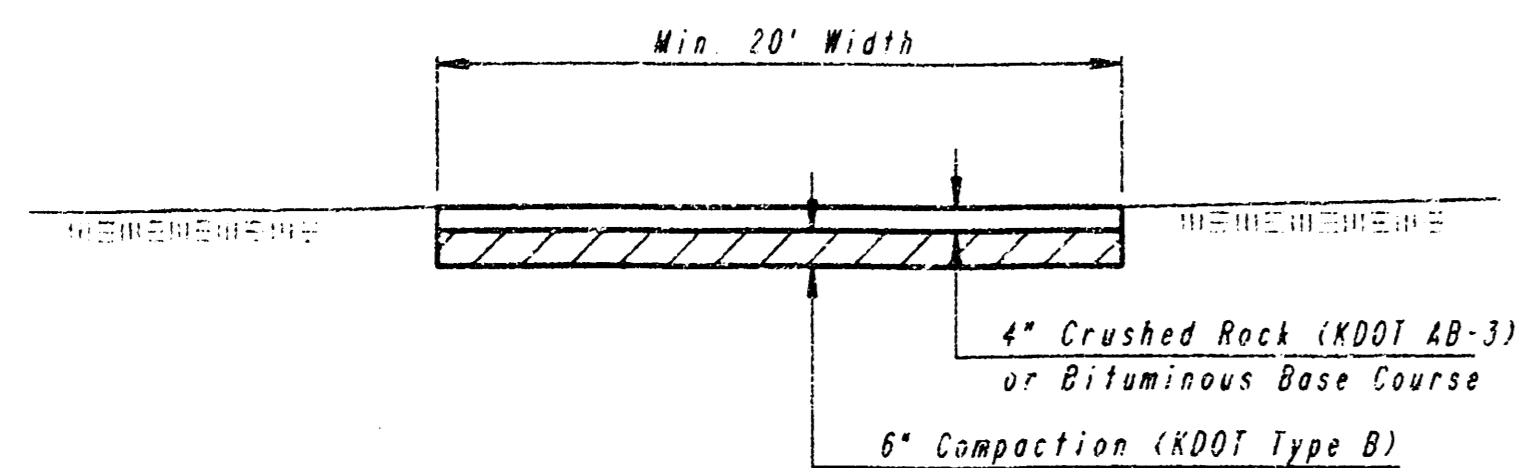


**SEDIMENT BARRIER DETAILS  
FENCE OPTION**

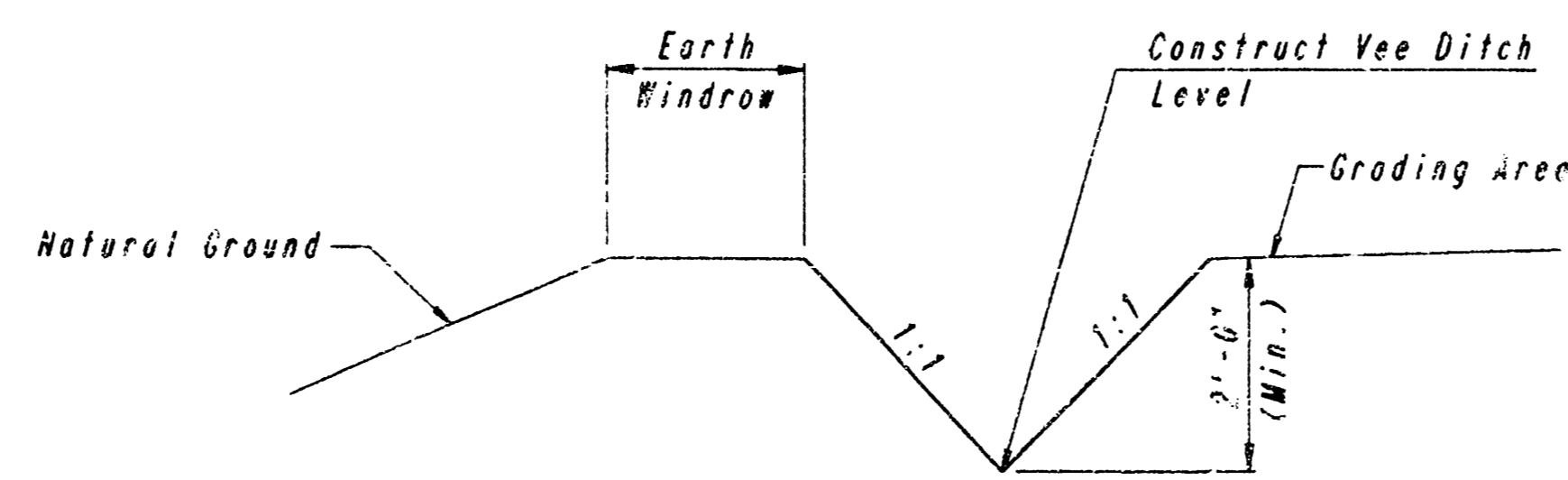
**ANCHOR TRENCH DETAIL**



**SEDIMENT BARRIER DETAILS  
HAY/STRAW BALE OPTION**

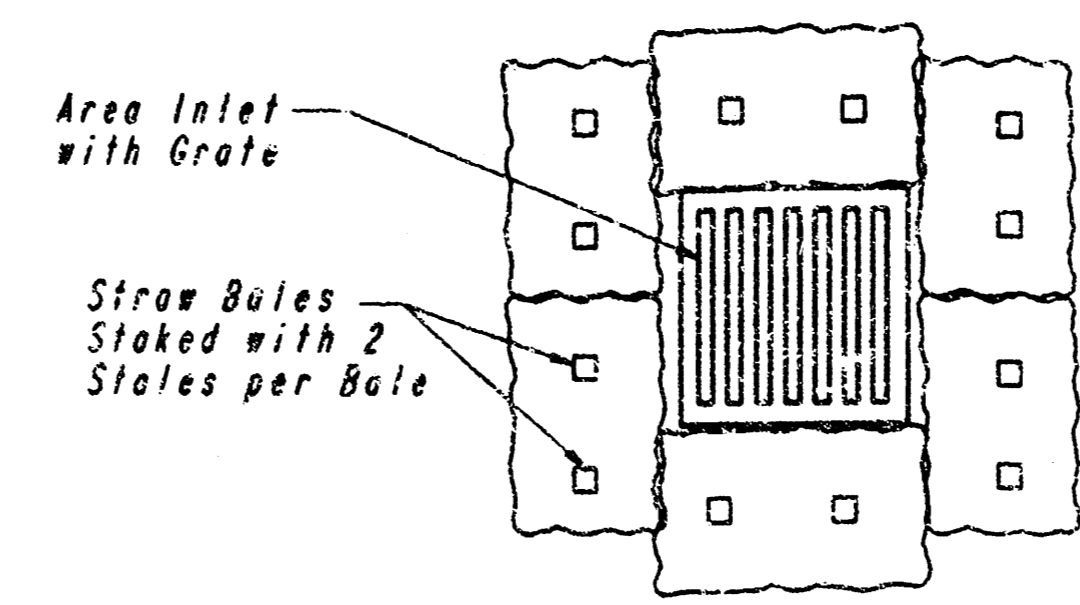


**TEMPORARY FIRE LANE**

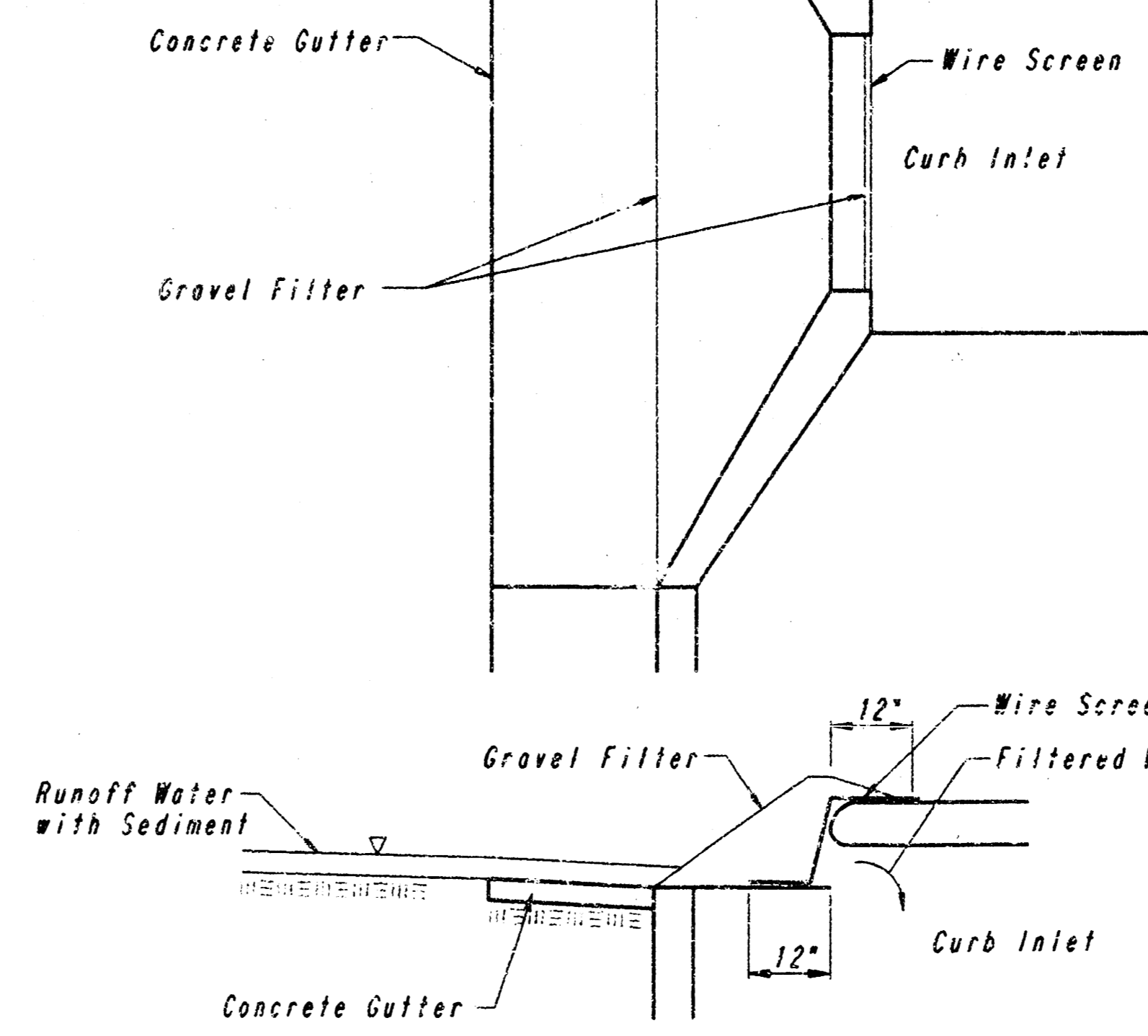


**TEMPORARY INTERCEPT DITCH DETAIL**

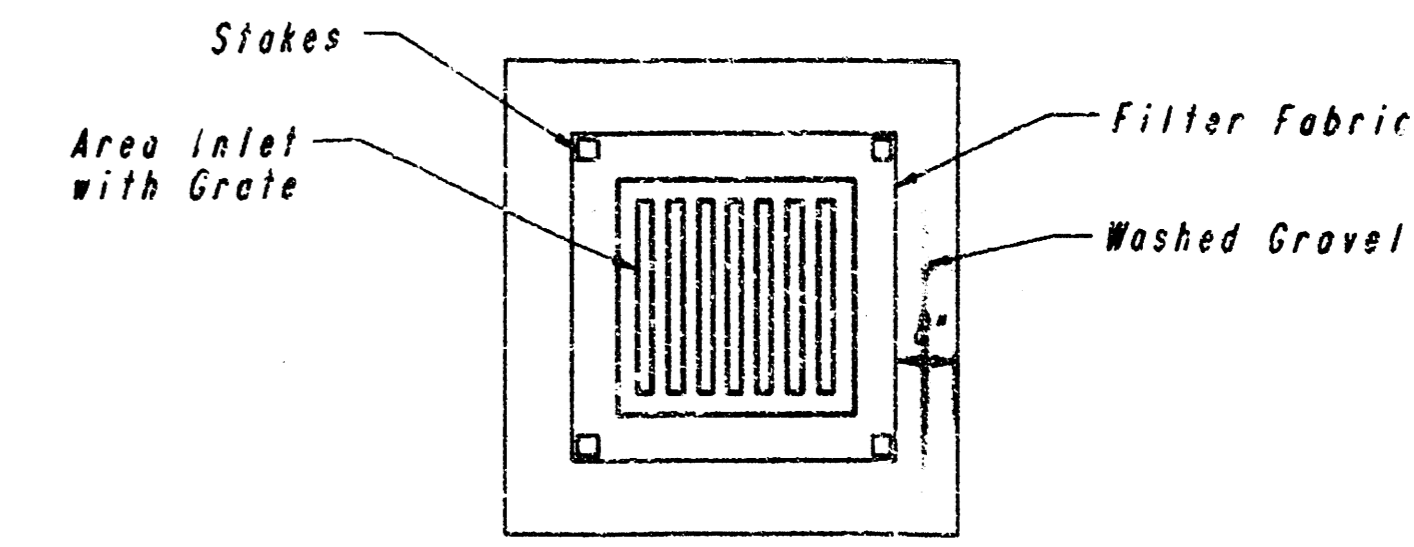
WHERE TEMPORARY EROSION CONTROL INTERCEPT DITCHES ARE USED, ALL AREAS WHERE FLOW IS CONCENTRATED SHALL BE PROTECTED BY SEDIMENT BARRIERS PRIOR TO DISCHARGING INTO ANY DITCH, STORM SEWER, OR WATERCOURSE.



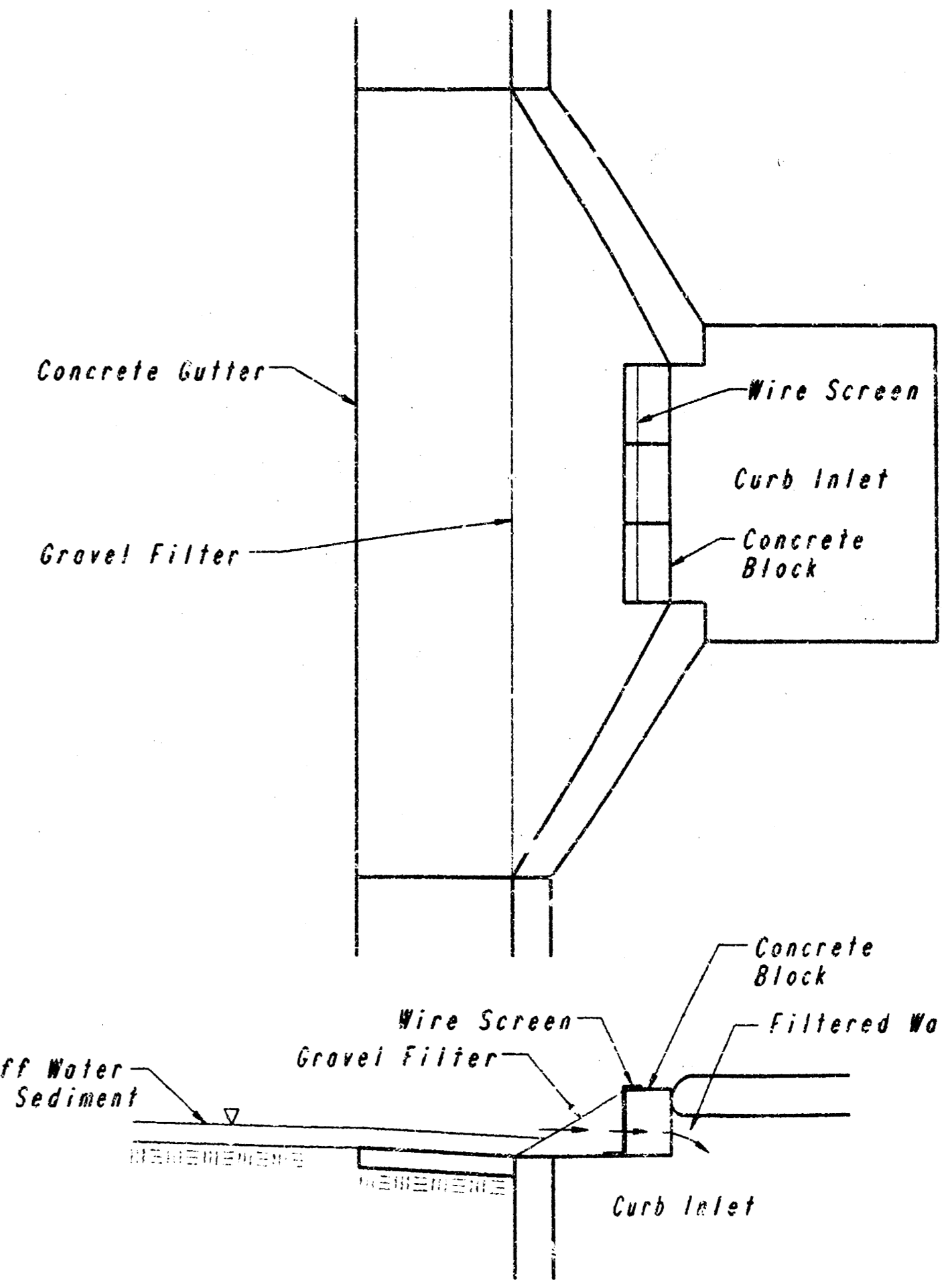
**AREA INLET PROTECTION  
STRAW BALES**



**CURB INLET PROTECTION  
GRAVEL AND WIRE MESH FILTER**



**AREA INLET PROTECTION  
FILTER FABRIC**



**CURB INLET PROTECTION  
BLOCK AND GRAVEL FILTER**

**RECORD DRAWING**

EROSION CONTROL DETAILS ADAPTED FROM VIRGINIA SOIL AND WATER CONSERVATION COMMISSION, 1985 AND DRAINAGE CRITERIA MANUAL, DENVER URBAN DRAINAGE AND FLOOD CONTROL DISTRICT 9-1-92.

MAY 31 1995

SURGERY AND RECOVERY CENTER  
 KANSAS SURGERY AND RECOVERY CENTER, L.P.  
**GRADING AND EROSION CONTROL DETAILS**  
 10TH AND WEBB ROAD  
 WICHITA, KANSAS  
**PROFESSIONAL ENGINEERING CONSULTANTS, P.A.**  
 ENGINEERS  
 WICHITA, KANSAS

Designed by	MWB	Checked by	
Drawn by	DEP	Date	FEB., 1994 Job No. 93627-1

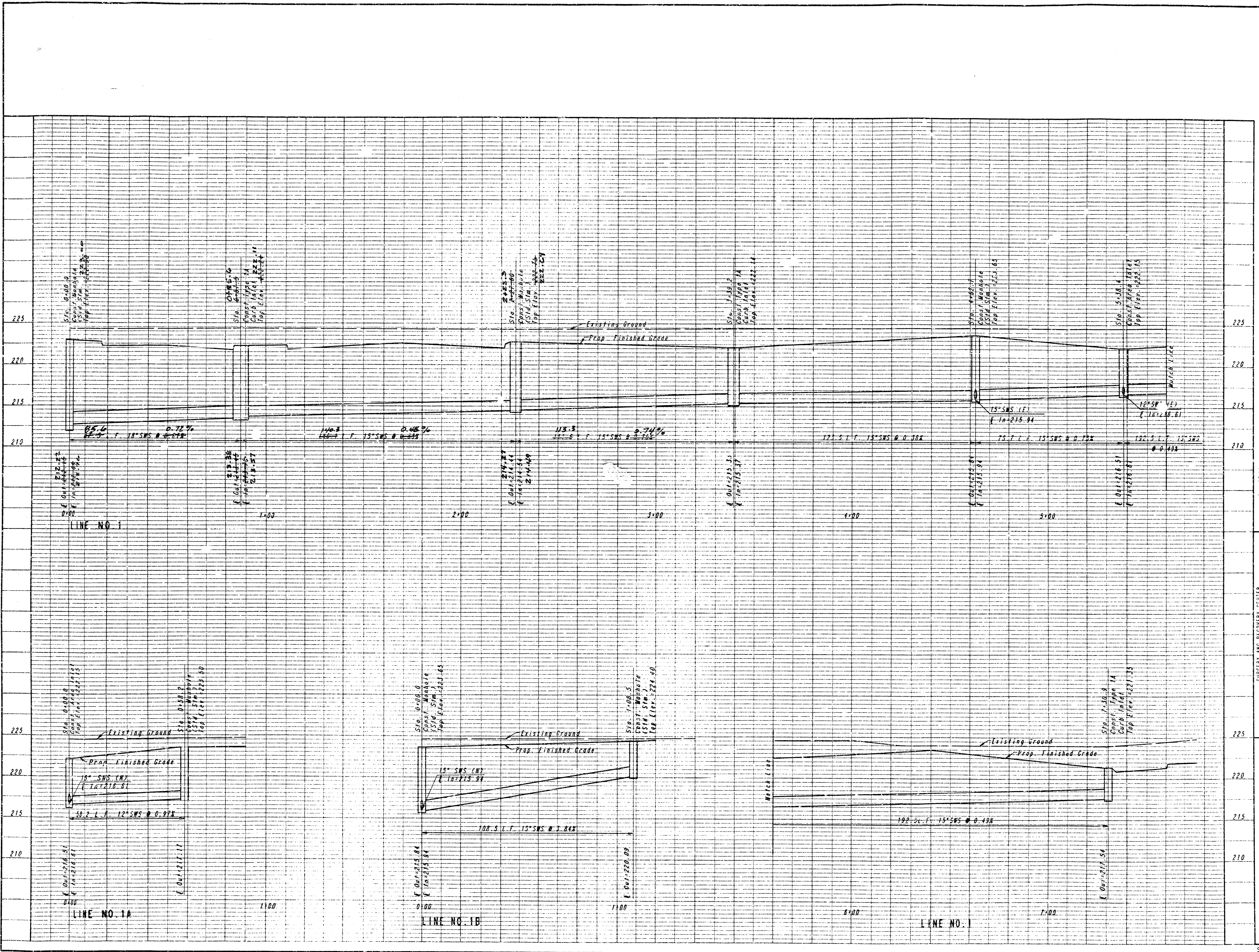
PLAN	DATE
SUBMITTED	
NOTED	
BY	
DATE	
BY	
DATE	
BY	
DATE	

DRAWING NAME: 35-93627-2 SED BAR 24-138  
 LOCATION: 04 1124  
 DATE LAST WORKED ON:  
 MAKE BERRY

DRAWING NAME: 36-051821-2 PROFILE A 24  
 LOCATION: D.L. #553  
 CENTER COORDINATES:  
 DATE LAST MARKED ON:  
 W.K.E. BERRY

PROFILE	BY	DATE
SUBMITTED		
NOTE BOOK GRADES CHECKED		
NO. OF S.W.S. NOTED		
SUBMITTING NOTES (W.K.E.)		

PLAN	BY	DATE
SUBMITTED		
NOTE BOOK GRADES CHECKED		
NO. OF S.W.S. NOTED		
PL. OF RAY CHECKED		
PL. OF RAY CHECKED		



MAY 31 1994  
**RECORD DRAWING**

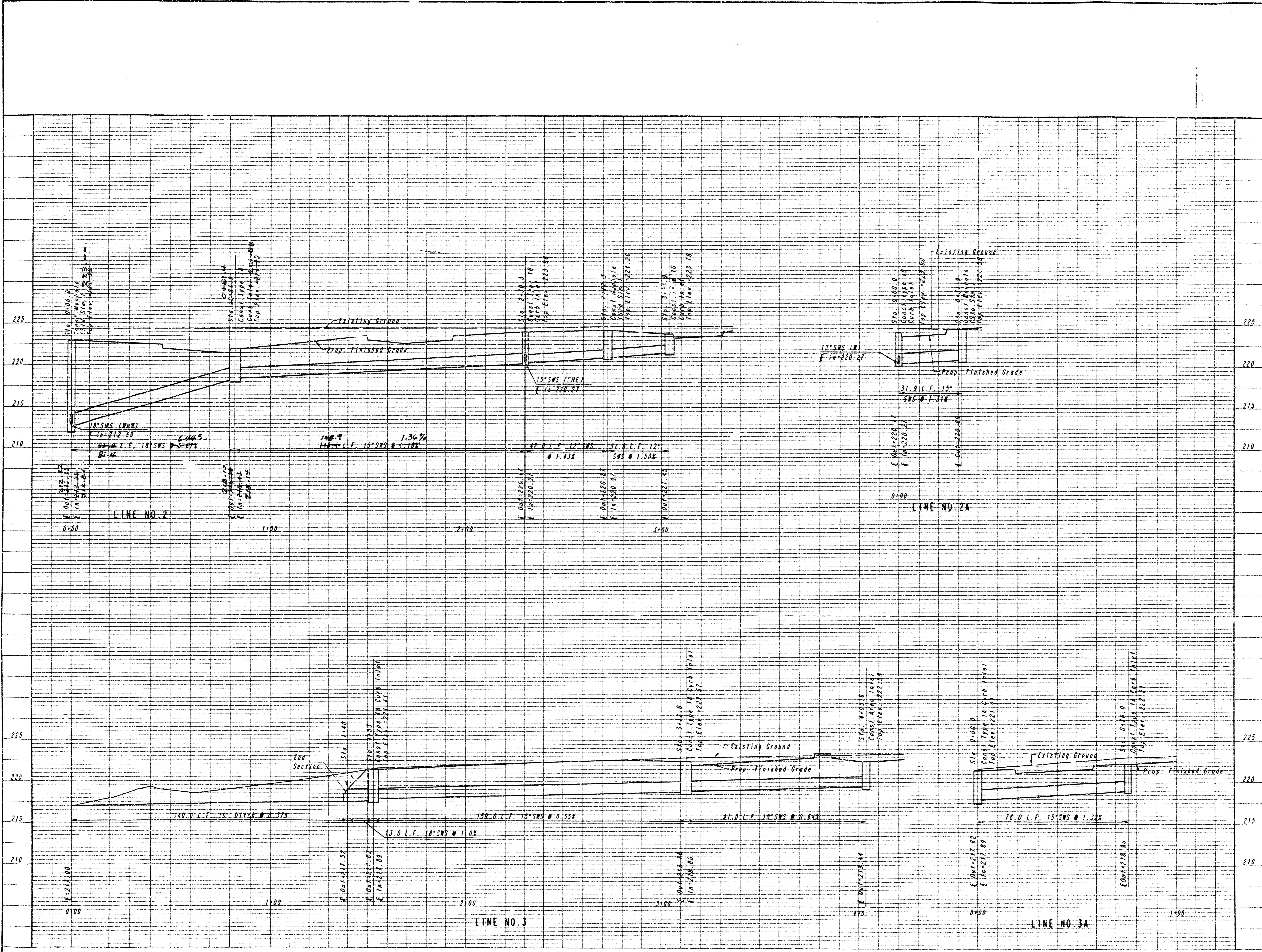
LINE NO. 1, 1A AND 1B  
 29TH AND WEBB ROAD  
 WICHITA, KANSAS

PROFESSIONAL ENGINEERING CONSULTANTS, P.A.  
 SURGERY AND RECOVERY CENTER  
 KANSAS SURGERY AND RECOVERY CENTER, L.P.  
 ENGINEERS  
 WICHITA, KANSAS  
 Designated By: MWB  
 Drawn By: JGP  
 Job No. 36-93627-1  
 Date FEB. 1994  
 Sheet SP4 5a

DRAWING NAME: 15-93871-2 PROFILE B 24  
 CENTER COORDINATES:  
 ROTATION ANGLE:  
 DATE LAST WORKED ON:  
 MIKE BERRY

PROFILE CORRECTED  
 NO. OF BOOK GRADINGS CHECKED:  
 B.M.'S NOTED:  
 STRUCTURE NOTES: CR-MD

PLAN SUBMITTED BY: 87  
 NOTE BOOK PLOTTED:  
 ALIGNMENT CHECKED:  
 DT - 01 - 01 - 01



Sheet SP4 5b

PROFESSIONAL ENGINEERING CONSULTANTS, P.A.  
 ENGINEERS  
 WICHITA, KANSAS  
 Designed By: MMB  
 Drawn By: JGP  
 Job No. 36-9-2627-1  
 Date FEB., 1994

SURGERY AND RECOVERY CENTER  
 KANSAS SURGERY AND RECOVERY CENTER, L.P.  
 MAY 31 1994  
 LINE NO. 2, 2A, 3 AND 3A  
 RECORD DRAWING  
 2918 AND WEBB ROAD  
 WICHITA, KANSAS

87-4-1-87

