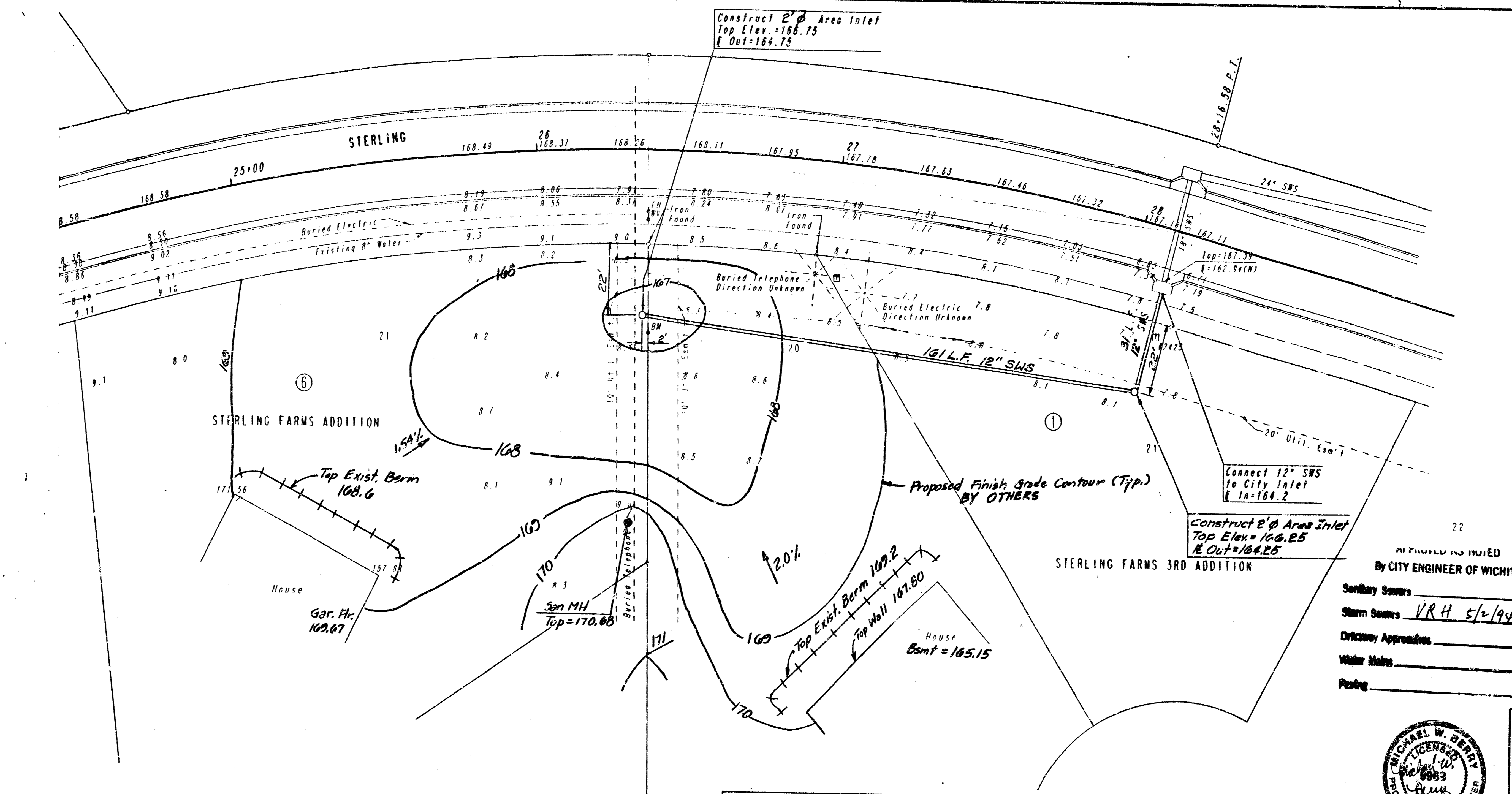
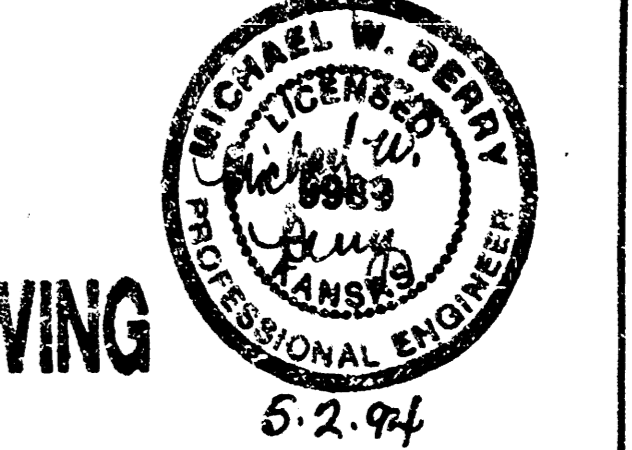


- GENERAL NOTES**
- CONSTRUCTION STAKING TO BE PROVIDED BY BUILDER.
  - BUILDER TO PROVIDE RIGHT OF ACCESS.
  - CONTRACTOR IS RESPONSIBLE FOR CONTACTING KANSAS ONE-CALL AND/OR UTILITY COMPANIES TO OBTAIN FIELD LOCATES. CONTRACTOR IS RESPONSIBLE FOR WORKING AROUND EXISTING UTILITIES IN PLACE. IN THE EVENT OF CONFLICT WITH THE PROPOSED IMPROVEMENTS, CONTACT THE BUILDER IMMEDIATELY TO MAKE ARRANGEMENTS TO RESOLVE THE CONFLICT.
- UTILITIES AND THEIR APPURTENANCES, WHERE FOUND, ARE SHOWN ON THE DRAWING, BUT THE LOCATIONS SHOWN ARE NOT GUARANTEED AND OTHER UNDERGROUND UTILITIES MAY BE ENCOUNTERED.
- CONTRACTOR IS RESPONSIBLE FOR OBTAINING PERMIT(S), TESTING AND/OR INSPECTION FEES, AND/OR PLAN REVIEW FEES, IF REQUIRED, FROM THE CITY OF WICHITA FOR WORK WITHIN THE PUBLIC RIGHT-OF-WAY AND/OR FOR CONNECTION TO THE PUBLIC STORM WATER SEWER.
  - PIPE TO BE ANY ONE OF THE FOLLOWING ALTERNATE PIPE MATERIALS:
    - REINFORCED CONCRETE PIPE (RCP)
    - HIGH DENSITY POLYETHYLENE PIPE (HDPE)
    - POLY VINYL CHLORIDE PIPE (PVC)
    - ALUMINIZED STEEL SMOOTH - FLOW PIPE (SFP)
- RCP SHALL BE FURNISHED AND INSTALLED IN ACCORDANCE WITH CITY OF WICHITA SPECIFICATIONS FOR STORM SEWERS AND DRAINAGE.
- HDPE PIPE, JOINTS, AND FITTINGS SHALL BE MANUFACTURED FROM VIRGIN HDPE RESIN, IN ACCORDANCE WITH THE REQUIREMENTS OF AASHTO M24 TYPE S. INSTALLATION SHALL BE PERFORMED IN ACCORDANCE WITH THE REQUIREMENTS OF ASTM D-2321 JOINTS SHALL BE MADE WITH SILT-PROOF GASKETS.
- SFP SHALL BE ALUMINIZED STEEL TYPE 2 SPIRAL RIB PIPE MANUFACTURED IN ACCORDANCE WITH AASHTO M38, EXCEPT THAT THE EXTERNAL HELICAL CORRUGATION PATTERN OF THE PIPE SHALL BE 3/4 IN X 3/4 IN X 7 1/2 IN AS DESCRIBED IN AASHTO M198. ALL PIPE TO BE MANUFACTURED FROM 18 GAUGE MATERIAL AND SHALL CONFORM TO THE TYPE IR CLASSIFICATION. CONNECTING BANDS AND INSTALLATION METHODS SHALL BE IN ACCORDANCE WITH REQUIREMENTS FOR CORRUGATED METAL PIPE IN CITY OF WICHITA STANDARD SPECIFICATIONS FOR STORM SEWERS AND DRAINAGE.
- PVC PIPE FOR DIAMETERS 12 INCHES THROUGH 18 INCHES INCLUSIVE SHALL BE FURNISHED AND INSTALLED IN ACCORDANCE WITH CITY OF WICHITA STANDARD SPECIFICATIONS FOR SANITARY SEWERS.
- THE CONTRACTOR SHALL PROVIDE A MATERIAL CERTIFICATION TO THE BUILDER FOR APPROVAL PRIOR TO PIPE INSTALLATION STATING THAT ALL MATERIALS USED CONFORM TO THE APPLICABLE SPECIFICATIONS.
- INLET DESIGN TO PROVIDE MINIMUM 1 SQ. FT. OF OPEN AREA AND WITHSTAND 2000 LB. WHEEL LOAD. INLET TO BE EITHER PREFABRICATED OR CONSTRUCTED IN PLACE AND SHALL BE COMPATIBLE WITH THE PIPE MATERIALS PROVIDED. CONTRACTOR TO PROVIDE SHOP DRAWINGS AND/OR CATALOG CUTS TO THE BUILDER FOR APPROVAL.
  - CONTRACTOR SHALL BE RESPONSIBLE FOR ALL SITE SAFETY CONDITIONS, INCLUDING, BUT NOT LIMITED TO, SHEETING AND/OR SHORING FOR TRENCH EXCAVATIONS AND BARRICADE(S)/BARRIER(S) TO PREVENT UNAUTHORIZED ENTRY.
  - CONSTRUCTION IN OR ALONG PUBLIC STREETS SHALL BE MARKED, SIGNED AND/OR BARRICADED IN ACCORDANCE WITH THE MANUAL ON UNIFORM TRAFFIC CONTROL DEVICES AND THE WICHITA BARRICADE MANUAL.
  - ALL CONSTRUCTION TO BE PERFORMED IN REASONABLE CONFORMANCE WITH THE LINES AND GRADES SHOWN ON THE PLANS; EXCEPT WHERE FIELD ADJUSTMENT OF THE HORIZONTAL ALIGNMENT IS REQUIRED TO AVOID CONFLICT WITH UTILITIES. DEVIATIONS FROM PLAN GRADES MUST BE APPROVED BY THE ENGINEER.
  - CONTRACTOR'S WORK SHALL BE GUARANTEED FOR ONE YEAR AGAINST DEFECTS IN MATERIAL AND WORKMANSHIP.

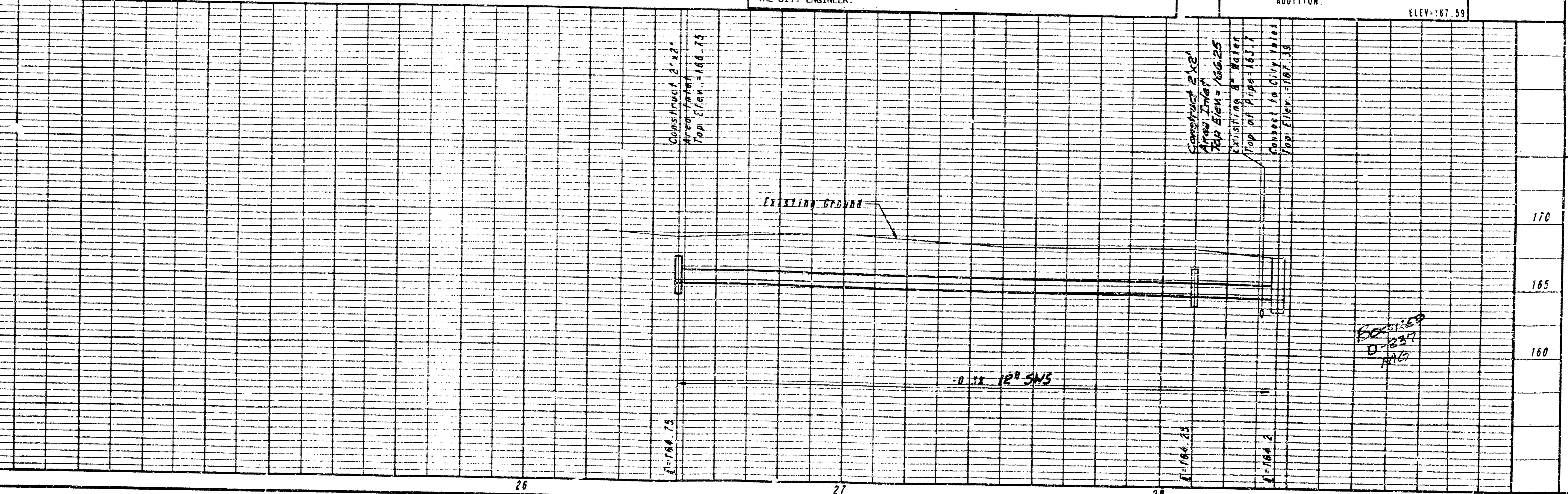


INSPECTION AND TESTING FOR THIS PROJECT IS TO BE PROVIDED BY A LICENSED CONSULTING ENGINEERING FIRM CONTRACTED BY THE OWNER/DEVELOPER. SAID INSPECTION TO BE IN ACCORDANCE WITH THE CITY OF WICHITA STANDARD CONSTRUCTION ENGINEERING PRACTICES AND CERTIFIED BY A LICENSED PROFESSIONAL ENGINEER. NO WORK SHALL BE PERFORMED IN DEDICATED EASEMENTS OR THE PUBLIC RIGHT-OF-WAY BY THE CONTRACTOR WITHOUT SUCH INSPECTION NOR SHALL ANY WORK BE COMMENCED IN DEDICATED EASEMENTS OR PUBLIC RIGHT-OF-WAY WITHOUT WRITTEN AUTHORIZATION BY THE CITY ENGINEER.

**RECORD DRAWING**  
5.2.94



B.M. #6 - 1-POST 26 FEET SOUTH OF N.W. CORNER LOT 20, BLOCK 1 STERLING FARMS 3RD ADDITION. ELEV=167.59



PRIVATE SWS IMPROVEMENT  
LOT 21, BLOCK 6  
STERLING FARMS  
C.O.W. Proj. No. 4020PSE (407641)

PROFESSIONAL ENGINEERING CONSULTANTS, P.A.  
ENGINEERS  
WICHITA, KANSAS  
Job No. 36-94197  
Designed By: MMB  
Drawn By: DEP  
Date: APR 1994

PLAN	DATE	BY
REVISED		
NOTE BOOK		
ALIGNMENT CHECKED		
RT. OF WAY CHECKED		

PROFILE	DATE	BY
REVISED		
NOTE BOOK		
GRADES CHECKED		
ST. ELEV. MOLES, CH. TO		

DRAWING NAME: 36-94197 ST. IN PRIVATE S  
LOCATION: 04 4502  
REVISIONS:  
DATE LAST WORKED ON:  
GAYLE CRIBER